

Are your MRI contrast agents cost-effective?

Learn more about generic Gadolinium-Based Contrast Agents.



**FRESENIUS
KABI**

caring for life

AJNR

**MR Analysis of the Substantia Innominata in
Normal Aging, Alzheimer Disease, and Other
Types of Dementia**

Haruo Hanyu, Tetsuichi Asano, Hirofumi Sakurai, Yuriko Tanaka,
Masaru Takasaki and Kimihiko Abe

This information is current as
of April 18, 2024.

AJNR Am J Neuroradiol 2002, 23 (1) 27-32
<http://www.ajnr.org/content/23/1/27>

MR Analysis of the Substantia Innominata in Normal Aging, Alzheimer Disease, and Other Types of Dementia

Haruo Hanyu, Tetsuichi Asano, Hirofumi Sakurai, Yuriko Tanaka, Masaru Takasaki, and Kimihiko Abe

BACKGROUND AND PURPOSE: The substantia innominata can be visualized on coronal thin-section T2-weighted MR images. The purpose of this study was to investigate the morphologic changes of the substantia innominata in normal aging by using MR imaging and to determine whether the changes in this structure on MR images were specific to Alzheimer disease (AD).

METHODS: The thickness of the substantia innominata was measured on the coronal T2-weighted image obtained through the anterior commissure in 39 healthy control subjects (age range, 25–86 y; mean age, 62 y); 39 patients with AD; and 36 patients with non-AD dementia, including vascular dementia, frontotemporal dementia, and Parkinson disease with dementia.

RESULTS: In the control subjects, the thickness of the substantia innominata significantly decreased with age. Compared with age-matched control subjects, both patients with AD and patients with non-AD dementia had significant atrophy of the substantia innominata. The thickness of the substantia innominata significantly correlated with scores from the Mini-Mental State Examination in patients with AD but not in patients with non-AD dementia.

CONCLUSION: MR analysis reveals age-related shrinkage of the substantia innominata. Atrophy of the substantia innominata, which reflects degeneration in the nucleus basalis of Meynert, is pronounced both in patients with AD and in those with non-AD dementia. MR imaging features in this structure may not be specific to AD.

The presence of a marked reduction and shrinkage of the large cells in the nucleus basalis of Meynert in the brains of patients with Alzheimer disease (AD) has been widely reported. Since the nucleus basalis of Meynert in the basal forebrain provides the major source of cholinergic input to the cerebral cortex, degeneration in the forebrain may represent an anatomic correlation of the loss of cholinergic markers in the cerebral cortex, and this may be involved in higher cortical dysfunction of AD (1, 2). The depiction of abnormalities in the nucleus basalis of Meynert on in vivo images appears to be necessary to understand the pathophysiology of AD.

In an MR imaging study in which postmortem specimens of human brain were compared, Sasaki et al (3) clarified the complex anatomy of the basal forebrain.

The substantia innominata, in which the nucleus basalis of Meynert is located, can be readily identified as a narrow band below the globus pallidus on thin-section T2-weighted coronal MR images. In the present study, we investigated the morphologic changes of the substantia innominata in normal aging by using MR imaging. We compared the thickness of the substantia innominata in patients with AD with those in patients with non-AD dementia, including vascular dementia and other degenerative dementias, to determine whether MR imaging changes in this structure were specific to AD. Moreover, we studied the correlation of shrinkage in the substantia innominata with cognitive function both in patients with AD and in those with non-AD dementia.

Methods

Subjects

We examined 39 patients with AD (15 men, 24 women; age range, 67–88 y; mean age, 78 y), 36 patients with other types of dementia (16 men, 20 women; age range, 63–87 y; mean age, 77 y), and 39 healthy control subjects (16 men, 23 women; age range, 25–86 y; mean age, 62 y). To compare patients with AD

Received July 2, 2001; accepted after revision August 15.

From the Departments of Geriatric Medicine (H.H., T.A., H.S., T.Y., M.T.) and Radiology (K.A.), Tokyo Medical University.

Address reprint requests to Haruo Hanyu, MD, Department of Geriatric Medicine, Tokyo Medical University, 6–7-1 Nishishinjuku, Shinjuku-ku, Tokyo 160-0023, Japan

and patients with other types of dementia, 21 age- and sex-matched elderly control subjects (nine men, 12 women; age range, 62–86 y; mean age, 76 y) were selected from the 39 healthy control subjects.

All patients with AD met the criteria for probable AD formulated by the National Institute of Neurological and Communicative Disorders and Stroke and the Alzheimer's Disease and Related Disorders Association, or NINCDS-ADRDA, Work Group (4). Patients with AD underwent general physical and neurologic examinations and extensive laboratory testing to exclude other potential causes of dementia. All had scores of less than 4 on the ischemic scale developed by Hachinski et al (5). Patients with evidence of stroke, as determined either with history or imaging findings, were excluded. Patients with AD were in the mild-to-moderate stages of the disease, with a mean Mini-Mental State Examination (MMSE) (6) score of 17.3 ± 4.4 .

The group of subjects with other types of dementia (non-AD dementia) included 23 patients with probable vascular dementia (10 men, 13 women; mean age, 77 y), according to the criteria of the National Institute of Neurological Disorders and Stroke and the Association Internationale pour la Recherche et l'Enseignement en Neurosciences, or NINDS-AIREN, International Workshop (7); five patients with frontotemporal dementia (two men, three women; mean age, 73 y), whose diagnoses were made according to the criteria of the Lund and Manchester groups (8); and eight patients with idiopathic Parkinson disease with dementia (three men, five women; mean age, 78 y). All patients with a diagnosis of vascular dementia had multiple lacunar strokes of the basal gray matter and thalamus, in addition to periventricular and deep white matter lesions. They had scores of more than 7 on the ischemic scale developed by Hachinski et al (5). The mean MMSE scores of patients with vascular dementia, frontotemporal dementia, and Parkinson disease with dementia were 20.0 ± 3.5 , 16.2 ± 6.4 , and 19.8 ± 2.4 , respectively. The dementia groups had no significant differences in age, sex, and MMSE scores.

The control subjects were cognitively healthy (mean MMSE score, 28.1 ± 1.2), were free of any neurologic or psychiatric illnesses, and had minimal white matter changes. None of the subjects, including those with AD, those with non-AD dementia, and the control group, had any lesions in the basal forebrain or in the tortuous vessels that compress the substantia innominata.

Written informed consent for the MR studies was obtained from all subjects, their spouses, or their family members.

MR Imaging

The subjects underwent imaging with a 1.5-T MR unit (Magnetom Symphony; Siemens Medical Systems, Erlangen, Germany) with a CP head array coil. Coronal T2-weighted images were obtained with a fast spin-echo sequence with parameters of 3000/100/3 (TR/TE/excitations). The section thickness was 3 mm, with an intersection gap of 0.9 mm. The matrix was 256 ± 231 , and the field of view was 20 cm. Coronal images were perpendicular to the anterior commissure–posterior commissure line.

As Sasaki et al (3) described previously, the substantia innominata is best visualized in the plane through the anterior commissure on the coronal T2-weighted image. The substantia innominata has the same signal intensity as that of the gray matter and is identified as a narrow band below the subcommissural part of the globus pallidus because of the low signal intensity of the latter. The thickness of the substantia innominata, including the right and left sides, was measured on the coronal T2-weighted image through the anterior commissure by blinded a investigator (T.A.), with a threefold magnification for each image. The measurement was performed with a standard work console (Siemens Medical Systems). The contrast among the substantia innominata, globus pallidus, and CSF was

carefully optimized on the cathode-ray terminal before the measurement was obtained. The distance between the lower margin of the low-signal-intensity area, which corresponded to the globus pallidus, and the surface of the substantia innominata was measured at the narrowest portion of the substantia innominata on the plane through the anterior commissure. Observer reliability was evaluated in 18 subjects with or without neurologic diseases. High intraobserver and interobserver reliability existed for the measurement of the thickness of the substantia innominata ($r = .90$ and $r = 0.87$, with 8.9% and 5.8% mean differences, respectively). The measurements of the thickness of the substantia innominata repeated after 3-month intervals differed by only $6.8\% \pm 2.9$ (difference between the two measurements, $n = 9$).

Statistical Analysis

Values were expressed as the mean \pm the SD. Between-group differences in the thickness of the substantia innominata were analyzed by using a one-way analysis of variance (ANOVA) with a post hoc Scheffé F test. Correlations between the thickness of the substantia innominata in healthy subjects and age and between the thickness and MMSE score were calculated by using Pearson correlation test. A *P* value of less than .05 was considered to indicate statistically significant difference.

Results

No statistical differences were found between the thickness of the substantia innominata on the right and left sides in any subject, including healthy control subjects, patients with AD, and those with non-AD dementia. The thickness on both sides correlated strongly (0.82 in control subjects, 0.86 in patients with AD, and 0.79 in those with non-AD dementia). Therefore, the average thickness, including that of the substantia innominata on the right and left sides, was calculated. In control subjects, the thickness of the substantia innominata significantly decreased with age ($r = -.86$, $P < .0001$), as shown in Figure 1. The thickness of the substantia innominata in patients with AD and in those with non-AD dementia was compared with that in 21 age- and sex-matched elderly control subjects. ANOVA revealed significant

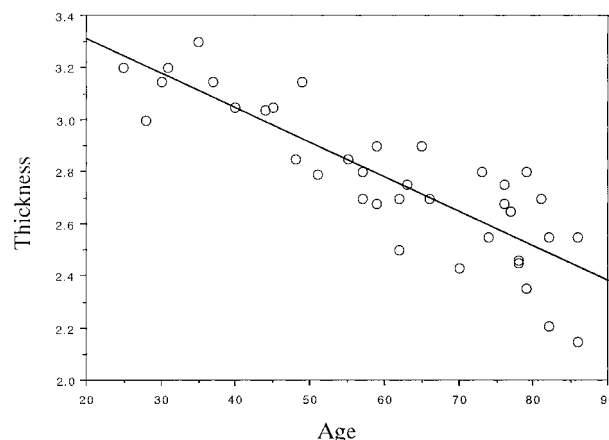


FIG 1. Plot shows the correlation between age and thickness of the substantia innominata in control subjects. The thickness of the substantia innominata significantly decreased with normal aging ($y = 3.576 - 0.013x$, $r = -.86$, $P < .0001$).

Thickness of the substantia innominata in elderly control subjects and patients with dementia

Patient Group	Substantia Innominata Thickness (mm)
Elderly control subjects (n = 21)	2.57 ± 0.19
AD (n = 39)	1.78 ± 0.28*
Vascular dementia (n = 23)	1.94 ± 0.22*
Frontotemporal dementia (n = 5)	1.79 ± 0.38*
Parkinson disease with dementia (n = 8)	1.93 ± 0.19*

* $P < .0001$, compared with thickness in elderly control subjects.

differences in the thickness of the substantia innominata between the groups ($F = 33.94$, $P < .0001$). The post hoc Scheffé F test revealed that the thickness in patients with AD and in those with vascular dementia, frontotemporal dementia, or Parkinson disease with dementia decreased more significantly than that in elderly control subjects (all $P < .0001$). However, no significant differences in thickness were found among the dementia groups (Table). The thickness of the substantia innominata significantly correlated with the MMSE score in patients with AD ($r = .55$, $P < .01$) but not in patients with non-AD dementia ($r = .21$, $P > .05$), including vascular dementia ($r = \pm .11$, $P < .05$), frontotemporal dementia ($r = .43$, $P > .05$), and Parkinson disease with dementia ($r = .01$, $P > .05$) (Fig 2).

Figure 3 shows coronal T2-weighted images in a young healthy control subject; an elderly healthy control subject; and patients with AD, vascular dementia, or frontotemporal dementia.

Discussion

We found that the thickness of the substantia innominata decreased with age and that the substantia innominata was atrophied not only in patients with AD but also in patients with non-AD dementia, compared with age-matched control subjects. Since the substantia innominata contains mainly the nucleus basalis of Meynert, atrophy of this structure is probably due to loss of neurons in the nucleus basalis of Meynert and a reduction in neuropils.

Several studies from McGeer et al (9), Mann et al (10), Lowes-Hummell et al (11), and De Lacalle et al (12) have revealed a significant age-dependent reduction in neurons in the nucleus basalis of Meynert. In their studies, subjects with a broad age range, including children, were included. In contrast, Chui et al (13) and Whitehouse et al (14) found that the numbers of neurons are largely stable in adults. Tissue-sampling differences could account for the disparity; the former groups counted all levels of the nucleus basalis of Meynert, and the other investigators counted only sections from a limited area. Moreover, in Chui et al's study (13), nine of the 10 patients younger than 60 years had chronic alcoholism, and nearly all died of alcohol-related disease, which in itself can cause nerve cell loss in the nucleus basalis of Meynert. The relatively low nerve cell count in the young patients in this study may have caused the absence of an age-dependent decrease in nerve cells. In agreement with the former study's findings, in which neurons in the nucleus basalis of Meynert were

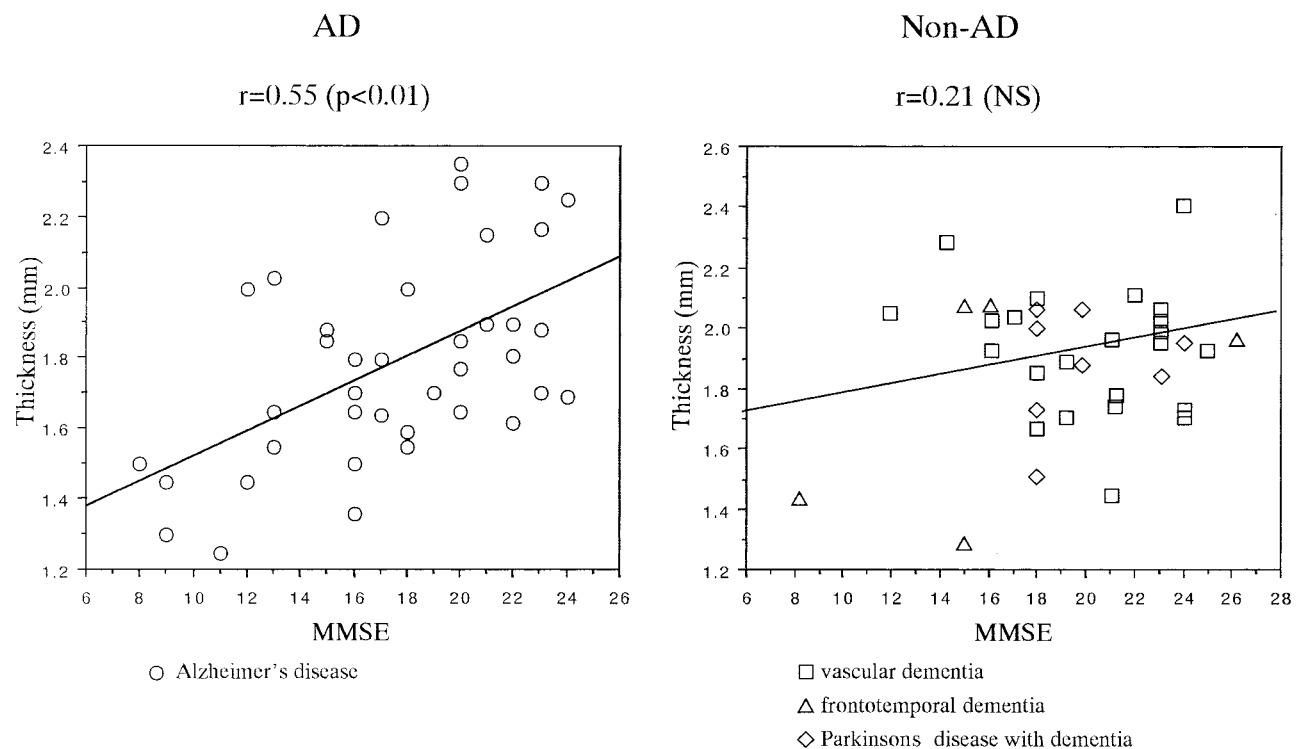


FIG 2. Plots show a significant correlation between MMSE scores and thickness of the substantia innominata in patients with AD but not in those with non-AD dementia. NS = not significant ($P > .05$).

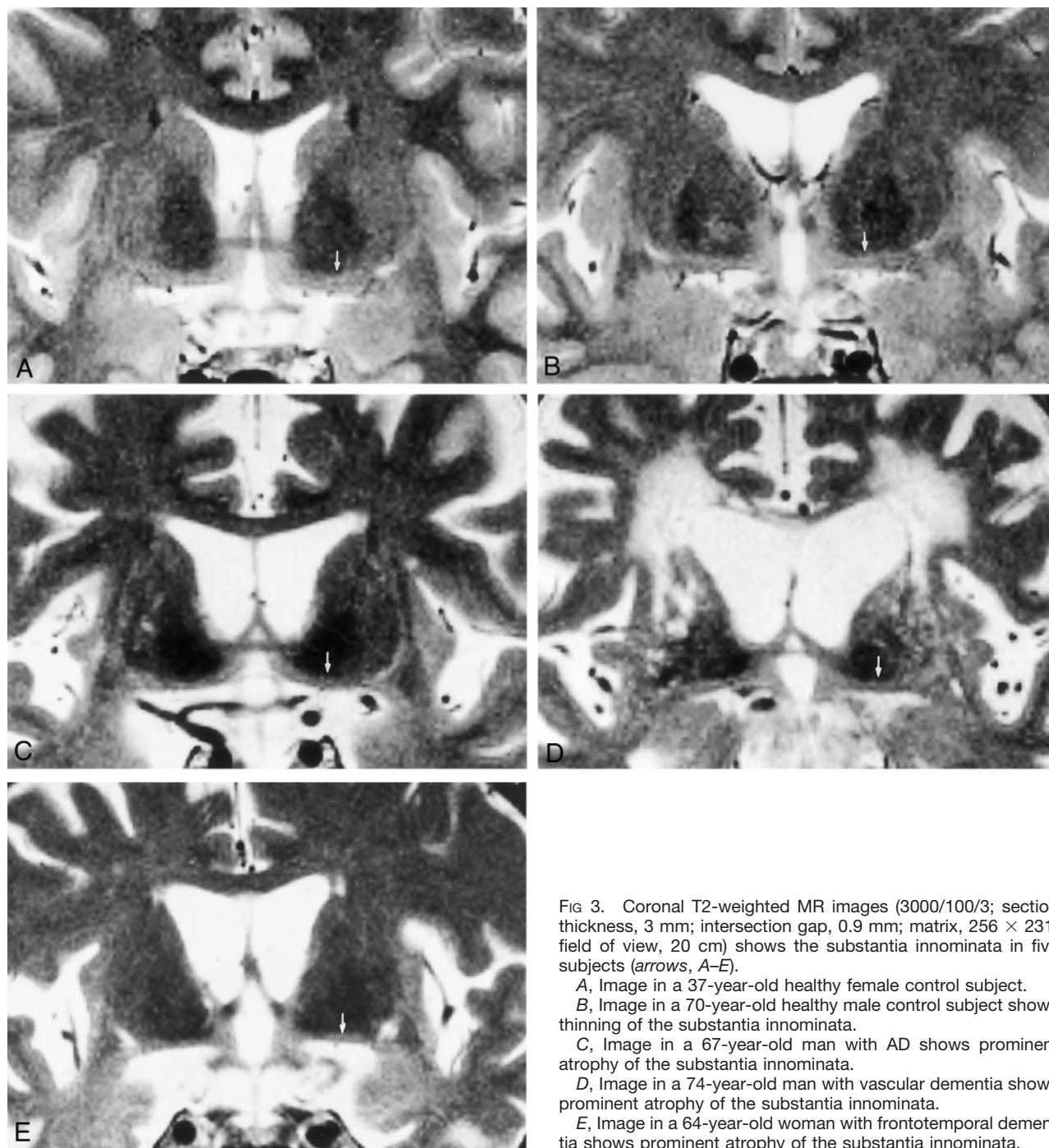


FIG 3. Coronal T2-weighted MR images (3000/100/3; section thickness, 3 mm; intersection gap, 0.9 mm; matrix, 256×231 ; field of view, 20 cm) shows the substantia innominata in five subjects (arrows, A-E).

A, Image in a 37-year-old healthy female control subject.

B, Image in a 70-year-old healthy male control subject shows thinning of the substantia innominata.

C, Image in a 67-year-old man with AD shows prominent atrophy of the substantia innominata.

D, Image in a 74-year-old man with vascular dementia shows prominent atrophy of the substantia innominata.

E, Image in a 64-year-old woman with frontotemporal dementia shows prominent atrophy of the substantia innominata.

found to be vulnerable during normal aging, our results provide evidence of atrophy in the substantia innominata with aging.

Whitehouse et al (1, 2) reported a profound reduction in neurons from the nucleus basalis of Meynert in AD and suggested that degeneration of the nucleus basalis of Meynert was responsible for the cholinergic deficiency in the cerebral cortex. However, other investigators have found considerable variations in neuronal loss, ranging from 18% to 90% (1, 2, 9, 10, 15–21). This considerable variation in neuronal loss does not result from the use of different

patient selection criteria and inconsistency in tissue processing but is mainly due to the counting procedures. On the other hand, several groups claimed that certain cholinergic neurons were shrunk rather than lost (15–20), suggesting retrograde degeneration in the nucleus basalis after damage of the cortex. Degeneration in the nucleus basalis of Meynert, regardless of whether it is neuronal loss or shrinkage, is likely to result in atrophy of the substantia innominata. In addition, significant neuronal loss has been demonstrated in neuropsychiatric diseases other than AD, such as Parkinson disease with and

without dementia (21, 22), parkinsonism-dementia complex (23), Creutzfeldt-Jakob disease (24), progressive supranuclear palsy (25), Pick disease (26), Down syndrome (27), and Korsakoff disease (21). Moreover, Kato et al (28) reported that neurofibrillary tangle-bearing neurons were observed in the nucleus basalis of Meynert, ipsilateral to the cerebral infarcts, probably because of a retrograde reaction secondary to massive cerebral infarction. These findings suggest that degeneration in the nucleus basalis of Meynert can occur in a number of pathologically heterogeneous conditions. Our results, which revealed that the substantia innominata was atrophied not only in AD but also in non-AD dementia, were consistent with those of histopathologic studies of the nucleus basalis of Meynert. Thus, MR imaging depiction of the atrophy in this structure may not aid in improving specificity in the diagnosis of AD. In addition, choline acetyltransferase activity in cortical or subcortical areas of the brain is reported to be reduced in patients with dementia and Lewy bodies (29), Parkinson disease with dementia (30), Pick disease (31), vascular dementia (32), and other neurologic diseases. Therefore, the impairment of the cholinergic system may not be restricted to AD but may occur in other diseases characterized by the deterioration of higher cognitive functions.

However, the thickness of the substantia innominata was significantly correlated with the clinical severity assessed by using MMSE in AD but not in non-AD dementia. These results suggest that cognitive impairment is at least partly attributable to shrinkage of the substantia innominata, which indicates degeneration of ascending cholinergic neurons from the nucleus basalis of Meynert, in AD. Cholinergic dysfunction related to atrophy of the nucleus basalis of Meynert may play a different role in the cognitive functions of patients with AD and in those with non-AD dementia.

Some methodologic issues must be considered with regard to our study. First, because signal loss in the globus pallidus, caused by its magnetic susceptibility effect with the T2-weighted spin-echo technique, is substantial in elderly subjects (33) and patients with AD and other neurologic diseases (34), the thickness of the substantia innominata may be underestimated. However, signal loss in the globus pallidus is less prominent with the fast spin-echo technique, because of diminished sensitivity to susceptibility, than with the conventional spin-echo technique (35), and the contrast between the globus pallidus and the substantia innominata is sufficient to determine the boundary. Second, since the substantia innominata is a very thin structure and the rostrocaudal length is less than 20 mm, the imaging position and angulation of the imaging plane affects the thickness of the substantia innominata. Thus, in this study, the thickness of the substantia innominata was measured only in the plane through the anterior commissure. Imaging with higher spatial resolution and thinner sections would have little influence on the data.

Conclusion

Atrophy of the substantia innominata is not restricted to AD; it also occurs in non-AD dementia, including vascular dementia, frontotemporal dementia, and Parkinson disease with dementia. Our findings are, in general, consistent with those of previous postmortem human studies that include cell counting results in the nucleus basalis of Meynert. Atrophy of the substantia innominata may represent cholinergic system degeneration in the nucleus basalis of Meynert. MR analysis of this structure may be useful in understanding the pathophysiologic process of AD and other types of dementia.

Acknowledgements

We thank K. Sasaki and A. Katsuyama of the MR imaging team of Tokyo Medical University for their support and technical assistance. Also, we are grateful to J. Patrick Barron of the International Medical Communications Center of Tokyo Medical University for his review of the manuscript.

References

1. Whitehouse PJ, Price DL, Clark AW, Coyle JT, DeLong MR. **Alzheimer disease: evidence for selective loss of cholinergic neurons in the nucleus basalis.** *Ann Neurol* 1981;10:122-126
2. Whitehouse PJ, Price DL, Struble RG, Clark AW, Coyle JT, DeLong MR. **Alzheimer's disease and senile dementia: loss of neurons in the basal forebrain.** *Science* 1982;215:1237-1239
3. Sasaki M, Ehara S, Tamakawa Y, et al **MR anatomy of the substantia innominata and findings in Alzheimer disease: a preliminary study.** *AJNR Am J Neuroradiol* 1995;16:2001-2007
4. McKhann G, Drachman D, Folstein M, Katzman R, Price D, Stadlan EM. **Clinical diagnosis of Alzheimer's disease: report of the NINCDS-ADRDA Work Group under the auspices of Department of Health and Human Services Task Force on Alzheimer's disease.** *Neurology* 1984;34:939-944
5. Hachinski VC, Iliff LD, Zilhka E, et al **Cerebral blood flow in dementia.** *Arch Neurol* 1975;32:632-637
6. Folstein MF, Folstein SE, McHugh PR. **Mini-Mental State: a practical method for grading the cognitive state of patients for the clinician.** *J Psychiatr Res* 1975;12:189-198
7. Roman GC, Tatemichi TK, Erkinjuntti T, et al **Vascular dementia, diagnostic criteria for research studies: report of the NINDS-AIREN International Workshop.** *Neurology* 1993;43:250-260
8. **Clinical and neuropathological criteria for frontotemporal dementia: Lund and Manchester groups.** *J Neurol Neurosurg Psychiatry* 1994;57:416-418
9. McGeer PL, McGeer EG, Suzuki J, Dolman CE, Nagai T. **Aging, Alzheimer's disease, and the cholinergic system of the basal forebrain.** *Neurology* 1984;34:741-745
10. Mann DMA, Yates PO, Marcyniuk B. **Changes in nerve cells of the nucleus basalis of Meynert in Alzheimer's disease and their relationship to ageing and to the accumulation of lipofuscin pigment.** *Mech Aging Dev* 1984;25:189-204
11. Lowes-Hummel P, Gertz HJ, Ferszt R, Cervos-Navarro J. **The basal nucleus of Meynert revised: the nerve cell number decreases with age.** *Arch Gerontol Geriatr* 1989;8:21-27
12. De Lacalle S, Iraizoz I, Ma Gonzalo L. **Differential changes in cell size and number in topographic subdivisions of human basal nucleus in normal aging.** *Neuroscience* 1991;43:445-456
13. Chui HC, Bondareff W, Zarow C, Slager U. **Stability of neuronal number in the human nucleus basalis of Meynert with age.** *Neurobiol Aging* 1984;5:83-88
14. Whitehouse PJ, Parhad IM, Hedreen JC, et al. **Integrity of the nucleus basalis of Meynert in normal aging.** *Neurology* 1983;33:159
15. Nagai T, McGeer PL, Peng JH, McGeer EG, Dolman CE. **Choline acetyltransferase immunohistochemistry in brains of Alzheimer's disease patients and controls.** *Neurosci Lett* 1983;36:195-199
16. Arendt T, Bigl V, Arendt A, Tennstedt A. **Loss of neurons in the nucleus basalis of Meynert in Alzheimer's disease, paralysis agitans and Korsakoff's disease.** *Acta Neuropathol (Berl)* 1983;61:101-108

17. Pearson RCA, Sofroniew MV, Cuello AC, et al **Persistence of cholinergic neurons in the basal nucleus in a brain with senile dementia of the Alzheimer's type demonstrated by immunohistochemical staining for choline acetyltransferase.** *Brain Res* 1983;289:375-379
18. Rinne JO, Paljarvi L, Rinne UK. **Neuronal size and density in the nucleus basalis of Meynert in Alzheimer's disease.** *J Neurol Sci* 1987;79:67-76
19. Allen SJ, Dawbarn D, Wilcock GK. **Morphometric immunochemical analysis of neurons in the nucleus basalis of Meynert in Alzheimer's disease.** *Brain Res* 1988;454:275-281
20. Vogels OJM, Broere CAJ, Ter Laak HJ, Ten Donkelaar HJ, Nieuwenhuys R, Schulte BPM. **Cell loss and shrinkage in the nucleus basalis Meynert complex in Alzheimer's disease.** *Neurobiol Aging* 1990;11:3-13
21. Arendt T, Bigl V, Arendt A, Tennstedt A. **Loss of neurons in the nucleus basalis of Meynert in Alzheimer's disease, Paralysis agitans and Korsakoff's disease.** *Acta Neuropathol (Berl)* 1983;61:101-108
22. Whitehouse PJ, Hedreen JC, White CL III, Price DL. **Basal forebrain neurons in the dementia of Parkinson's disease.** *Ann Neurol* 1983;13:243-248.
23. Nakano I, Hirano A. **Neuron loss in the nucleus basalis of Meynert of Parkinsonism-dementia complex of Guam.** *Ann Neurol* 1983;13:87-91
24. Arendt T, Bigl V, Arendt A. **Neuron loss in the nucleus basalis of Meynert in Creutzfeldt-Jakob disease.** *Acta Neuropathol (Berl)* 1984;65:85-88
25. Tagliavini F, Pilleri G, Gemignani F, Lechi A. **Neuronal loss in the basal nucleus of Meynert in progressive supranuclear palsy.** *Acta Neuropathol (Berl)* 1983;61:157-160
26. Uhl G, Hilt DC, Hedreen JC, Whitehouse PJ, Price DL. **Pick's disease (lobar sclerosis): depletion of neurons in the nucleus basalis of Meynert.** *Neurology* 1983;33:1470-1473
27. Price DL, Whitehouse PJ, Struble RG, et al **Alzheimer's disease and Down's syndrome.** *Ann NY Acad Sci* 1982;396:145-164
28. Kato T, Hirano A, Katagiri T, Sasaki H, Yamada S. **Neurofibrillary tangle formation in the nucleus basalis of Meynert ipsilateral to a massive cerebral infarct.** *Ann Neurol* 1988;23:620-623
29. Perry EK, Haroutunian V, Davis KL, et al **Neocortical cholinergic activities differentiate Lewy body dementia from classical Alzheimer's disease.** *Neuroreport* 1994;5:747-749
30. Ruberg M, Ploska A, Javoy-Agid F, Agid Y. **Muscarinic binding and choline acetyltransferase activity in parkinsonian subjects with reference to dementia.** *Brain Res* 1982;232:129-139
31. Sparks DL, Markesbery WR. **Altered serotonergic and cholinergic synaptic markers in Pick's disease.** *Arch Neurol* 1991;41:796-799
32. Gottfries CG, Blennow K, Karlsson I, Wallin A. **The neurochemistry of vascular dementia.** *Dementia* 1994;5:163-167
33. Schenker C, Meier D, Wichmann W, Boesiger P, Valavanis A. **Age distribution and iron dependency of the T2 relaxation time in the globus pallidus and putamen.** *Neuroradiology* 1993;35:119-124
34. Bartzokis G, Sultzer D, Mintz J, et al **In vivo evaluation of brain iron in Alzheimer's disease and normal subjects using MRI.** *Biol Psychiatry* 1994;35:480-487
35. Conrable RT, Anderson AW, Zhong J, Gore JC. **Factors influencing contrast in fast spin-echo MR imaging.** *Magn Reson Imaging* 1992;10:497-511