

Are your MRI contrast agents cost-effective?

Learn more about generic Gadolinium-Based Contrast Agents.



**FRESENIUS
KABI**

caring for life

AJNR

Lingual Artery Bifurcation Aneurysms for Training and Evaluation of Neurovascular Devices

Jean Raymond, Igor Salazkin, Annick Metcalfe, Olivier Robledo, Guylaine Gevry, Daniel Roy, Alain Weill and François Guilbert

This information is current as of April 19, 2024.

AJNR Am J Neuroradiol 2004, 25 (8) 1387-1390
<http://www.ajnr.org/content/25/8/1387>

Lingual Artery Bifurcation Aneurysms for Training and Evaluation of Neurovascular Devices

Jean Raymond, Igor Salazkin, Annick Metcalfe, Olivier Robledo, Guylaine Gevry, Daniel Roy, Alain Weill, and François Guilbert

Summary: We present a canine lingual artery bifurcation aneurysm and assess its value for training in endovascular techniques and testing new embolic agents. The experimental aneurysm described herein mirrors human bifurcation aneurysms, and with this model, we sought to reproduce endovascular technical difficulties. However, the lesions created in this canine model did not show angiographic or histologic evidence of aneurysmal recurrence. We conclude that this model may be useful for training in endovascular techniques, but because of the lack of sufficient aneurysmal recurrence, it is not suitable for evaluating new embolic agents.

Coil embolization of ruptured intracranial aneurysms leads to a better clinical outcome than does surgery (1), although the outcomes of this endovascular approach are less definitive than those of surgical clipping owing to a higher incidence of angiographically proved aneurysmal recurrences (2). New techniques or materials designed to improve long-term results of endovascular treatment must be evaluated in experimental models that reproduce the problem of recurrence before they can be proposed for a clinical application (3–10).

A lingual artery aneurysm model was designed to mimic clinical aneurysms, and its potential value as a training tool and its capacity to lead to recurrences with a sufficient frequency to be useful in the evaluation of new techniques or embolic agents were assessed.

Methods

Protocols for animal experimentation were approved by the Institutional Animal Care Committee in accordance with guidelines of the Canadian Council on Animal Care. All surgical and endovascular procedures were performed with the animals under general anesthesia. Seventeen beagles weighing

10–15 kg were sedated with an intramuscular injection of acepromazine (0.1 mg/kg), glycopyrrolate (0.01 mg/kg), and butorphanol (0.1 mg/kg), and anesthetized with intravenous thiopental (15 mg/kg). The animals were ventilated artificially and maintained under surgical anesthesia with 2% isoflurane. Postoperative anesthesia was provided for 3 days by a 50- μ g fentanyl skin patch. Bifurcation aneurysms were constructed by using venous pouches in 17 animals on the external carotid arteries, at the origin of the lingual arteries. In brief, the lingual external carotid bifurcation was accessed from bilateral 3-cm-long incisions in the submandibular region. Two segments from the same external jugular vein were harvested to be used as venous pouches. The lingual nerve was carefully dissected, encircled, and moved aside. The external carotid and lingual arteries were also encircled with ligatures, and blood flow was arrested with microvascular clamps. The bifurcation was stretched to form a straight line between lingual and distal external carotid arteries (Fig 1). The arteriotomy creating the neck of the aneurysm was eccentric, with two thirds of its length (8 mm) on the external carotid and one third on the origin of the lingual artery. Venous segments approximately 10 mm long were attached with two stay sutures, and the anastomosis was completed with 7-0 running suture. The fundus of the aneurysm was closed with hemostatic clips. Circulation was then restored (Fig 1).

The embolization procedure was performed at least 2 weeks after surgery. Six aneurysms in three animals were followed up for 3 months before embolization. Two other animals were also followed up for 6 and 9 months, respectively. Coil embolization (standard platinum coils in 11, radioactive coils in six, and Hydrocoils [MicroVention, Aliso Viejo, CA]) in two aneurysms was done, as described elsewhere (9), to achieve complete or nearly complete aneurysmal sac obliteration. Polymeric coils (NeuroVasx; Maple Grove, MN) were used to embolize six aneurysms. Ethylene vinyl alcohol was injected under the protection of a balloon (HyperGlide; MicroTherapeutics, Irvine, CA). Other detachable coils were provided by MicroVention, MicroTherapeutics, Cordis Corporation (TRUFILL DCS; Miami Lakes, FL) and Boston Scientific/Target (GDC, GDC-Soft, Fremont, CA). Transfemoral conventional angiography was performed immediately after embolization, 3 weeks postoperatively, and 3 months postoperatively. Angiographic results were scored according to a previously described classification (10). A score of 0 indicated complete obliteration; 1, “dog ears”; 2, residual or recurrent neck; 3, residual or recurrent aneurysm; and 4, large saccular recurrences.

Macroscopic and microscopic stereophotographs were taken after excision of aneurysms. Neointimal formation and recanalization at the neck of bifurcation aneurysms were evaluated according to a previously described scoring system (3, 8): a score of 0 indicated complete neointimal sealing of the neck; 1, small areas of recanalization; 2, crescent of recanalization around the neointima covering the embolic agent; 3, recanalization affecting the coil mass; and 4, no neointima. Arteries and aneurysms were studied after formalin fixation, axial sectioning, and staining with hematoxylin-phloxine-saffron and Movat pentachrome.

The evolution of angiographic scores over time, following standard platinum coil embolization, was analyzed by using a

Received January 8, 2004; accepted after revision March 7.

From the Interventional Neuroradiology Laboratory, CHUM Research Center, (J.R., I.S., A.M., O.R., G.G.), and the Department of Radiology, Centre Hospitalier de l'Université de Montréal (J.R., D.R., A.W., F.G.), Notre-Dame Hospital, Montreal, Quebec, Canada.

Supported by grants from Canadian Institutes of Health Research, and Hearst and the Stroke Foundation of Canada.

Address correspondence to Annick Metcalfe, Interventional Neuroradiology Laboratory, CHUM Research Center, Notre-Dame Hospital, Mailloux Pavilion M-8203 1560 Sherbrooke East Montreal, Quebec H2L 4M1, Canada.

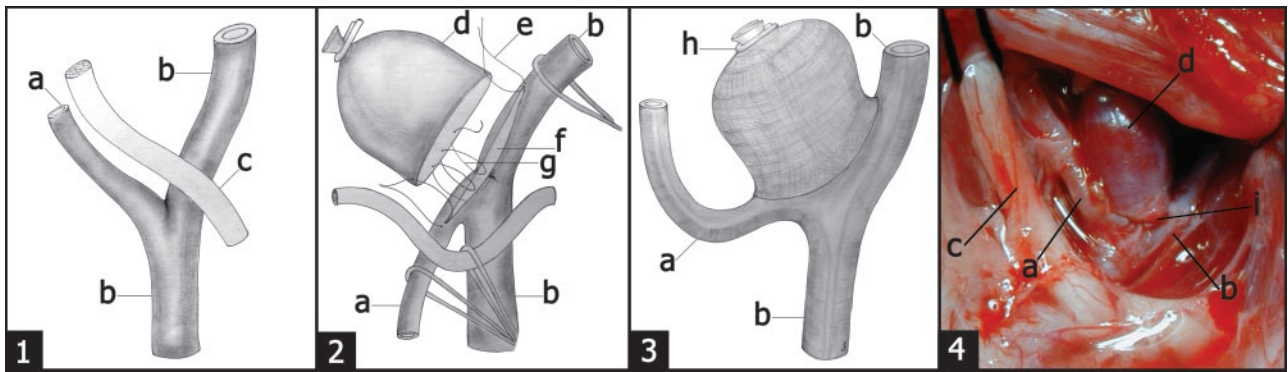


FIG 1. Surgical construction of lingual bifurcation aneurysms. 1, Normal anatomy; 2, surgical technique; 3, final result. a, lingual artery; b, external carotid artery; c, lingual nerve; d, venous pouch; e, stay sutures; f, arteriotomy; g, running 7.0 Prolene suture; h, hemostatic clip.



FIG 2. Angiographic evolution after embolization. Carotid angiograms performed before 1), immediately after 2), and 3 months after 3) coil embolization of lingual bifurcation aneurysms, showing no recurrence.

Wilcoxon signed ranks test. A P value less than .05 was considered a significant difference.

Results

Most animals tolerated the surgical, embolic, and angiographic procedures without complications, except for one dog that died owing to an adverse reaction to anesthetic that immediately led to death after embolization. Of 32 constructed aneurysms that could be followed up, angiography showed 31 to be patent at 2-week follow-up. Six of six aneurysms followed up for 3 months were still patent, whereas two of two and two of two were also patent 6 and 9 months after surgery, respectively. Aneurysms tended to grow with time, as documented at 2-week and 3-month follow-up, but aneurysms followed up for 6 and 9 months were stable after the initial increase in size.

Catheterization of aneurysms was uncomplicated, and coil embolization could be performed in a fashion similar to that in clinical practice. It was often difficult to obtain complete obliteration of aneurysms without stenosing or occluding the origin of the lingual artery (Fig 2). When the origin of the lingual artery was stenosed at the time of embolization, it usually recovered a normal flow by 3 months (Fig 2).

The angiographic scores of lesions treated by coiling tended to remain stable and without recurrences. Some lesions improved with time, and one did recur at 3 months.

Mean size of aneurysms, mean packing density, and median angiographic and neointimal scores of lesions treated by standard coiling are summarized in the Table. There was no significant difference in the angiographic scores at 3 months as compared with initial scores ($P = .713$).

Macroscopic photography of the neck of aneurysms showed a well-defined neointima in most lesions (median neointimal score, 2; Fig 3). The neointimal tissue that formed at the surface of the embolic agents had nonspecific histopathologic features.

Discussion

Animal models are essential to the preclinical evaluation of embolic material and devices. The surgical construction of venous-pouch aneurysms provides a reliable method to obtain aneurysms of homogeneous characteristics, such as consistent size and neck diameters. They remain patent for extended periods, provided they are created in the appropriate species, particularly in dogs and rabbits. Porcine models have

Angiographic and neointimal scores of lingual aneurysms treated with platinum coils

Aneurysms	1L	2R	3L	3R	4L	4R	5L	5R	6L	6R	7L	Median
Day 0	0	1	0	2	0	2	2	0	0	0	0	0
3 weeks	0	0	0	2	0	0	2	0	0	3	0	0
3 months	0	0	0	0	0	0	2	0	0	3	0	0
Neointima	2	3	4	3	2	3	1	1	0	3	0	2

Note.—No significant difference between day 0 and 3 months; $P = .713$ by a Wilcoxon signed ranks test. Mean aneurysms size, 132.13 ± 113.23 mm³. Mean packing density, 0.33 ± 0.19 .

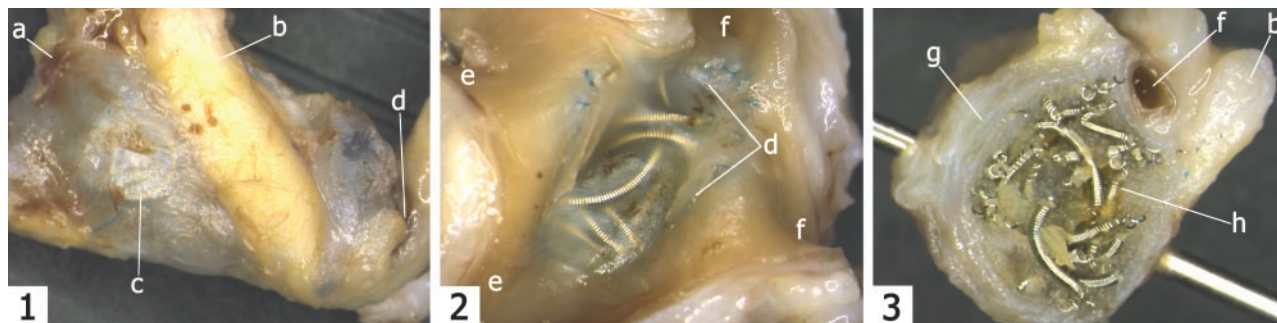


FIG 3. Macroscopic photography of aneurysms 3 months after embolization. 1, Side view; 2, view of the neck; 3, transverse section through the aneurysm. a, fundus; b, lingual nerve; c, coil inside the aneurysm; d, neck; e, carotid artery; f, lingual artery; g, aneurysm wall; h, coils.

a strong tendency for thrombosis and exuberant neointimal formation and have therefore been extensively used to study restenosis after stent implantation. However, because of the spontaneous healing of porcine aneurysms, they are inappropriate to assess results after embolization (4, 10–12). They may be used for acute experiments, although they are still incapable of assuring the safety of embolic materials (4). The advantages of surgical models are obtained at the cost of decreased biological pertinence due to surgical trauma, the artificial neck, the presence of suture material, and the venous composition of the aneurysmal wall, all factors that may influence tissue reactions after treatment. The claim that elastase models, another method to create experimental aneurysms artificially, provide lesions that are more similar to the human condition is a plausible hypothesis that has not been scientifically validated (11). The technique introduces its own artifacts, the lesions are less consistent, and the animal size necessitates significant modifications of endovascular techniques. Surgical aneurysms cannot be used to study the biology of aneurysm development and rupture, but recanalization and recurrences can be reproduced (3–10). We have elsewhere described an intraoperative sponge embolization model in canine lateral wall aneurysms with a tendency to recur (10). Coil embolization of canine carotid lateral wall aneurysms, however, is not followed by frequent recurrences (9). Bifurcation aneurysms have a stronger propensity for recurrence after coil embolization, especially when a wide-neck model is used (3, 8, 9). The bifurcation is a surgical anastomosis between the two carotid arteries. The aneurysms, parent vessel, and branches are large, and the model permits the construction of only one bifurcation aneurysm (3, 8, 9).

The lingual artery aneurysm model provides bilateral bifurcation aneurysms that mimic clinical lesions (Fig 2). The size of lesions and arterial branches mirrors that in the clinical setting. Evaluation of some coil characteristics, such as the rigidity and length of the junction between the coil and the pusher wire that may cause microcatheter kickback, could be performed with confidence. Attempts at complete occlusion of the lesion while preserving the origin of the lingual artery led to the same technical difficulties encountered in clinical procedures, including occlusion of the lingual artery, not protected by balloon inflation, with liquid embolic material. One anatomic feature of aneurysms constructed in this location is the close topographic relationship with the lingual nerve, which could be used to assess the safety or potential radiation damage to cranial nerves when using a radioactive coil strategy (6; Figs 1 and 3).

Angiographic results 3 months after coil embolization did not show sufficient recurrences for this model to be useful in the assessment of the potential of new embolic agents in improving long-term results. The reasons for the decrease in the recurrence rate as compared with other bifurcation models may be hemodynamic, because the model is closer to a lateral wall construction. Lesion and neck sizes are also inferior, which significantly increases the incidence of clinical recurrences (2).

Conclusion

Lingual artery bifurcation aneurysms provide a realistic model to mimic clinical procedures and could be helpful to evaluate embolic agents or materials in the acute setting as well as for the training of operators in the use of new devices. Unfortunately, they do

not recur with sufficient frequency to assess the potential of new interventions in improving long-term results of endovascular treatment.

References

1. Molyneux A, Kerr R, Stratton I, et al. **International Subarachnoid Aneurysm Trial (ISAT) Collaborative Group. International Subarachnoid Aneurysm Trial (ISAT) of neurosurgical clipping versus endovascular coiling in 2143 patients with ruptured intracranial aneurysms: a randomised trial.** *Lancet* 2002;360:1267–1274
2. Raymond J, Guilbert F, Weill A, et al. **Long-term angiographic recurrences after selective endovascular treatment of aneurysms with detachable coils.** *Stroke* 2003;34:1398–1403
3. Raymond J, Salazkin I, Metcalfe A, et al. **High-concentration ethylene-vinyl alcohol copolymer and endovascular treatment of experimental aneurysms: feasibility of embolization without protection devices at the neck.** *AJNR Am J Neuroradiol* 2003;24:1778–1784
4. Raymond J, Metcalfe A, Desfaits AC, et al. **Alginate for endovascular treatment of aneurysms and local growth factor delivery.** *AJNR Am J Neuroradiol* 2003;24:1214–1221
5. Kerber CW, Wong W. **Liquid acrylic adhesive agents in interventional neuroradiology.** *Neurosurg Clin N Am* 2000;11:85–99; viii–ix [review].
6. Raymond J, Leblanc P, Desfaits AC, et al. **In situ beta radiation to prevent recanalization after coil embolization of cerebral aneurysms.** *Stroke* 2002;33:421–427
7. Kallmes DF, Fujiwara NH. **New expandable hydrogel-platinum coil hybrid device for aneurysm embolization.** *AJNR Am J Neuroradiol* 2002;23:1580–1588
8. Raymond J, Salazkin I, Georganos S, et al. **Endovascular treatment of experimental wide neck aneurysms: comparison of results using coils or cyanoacrylate with the assistance of an aneurysm neck bridge device.** *AJNR Am J Neuroradiol* 2002;23:1710–1716
9. Raymond J, Berthelet F, Desfaits AC, et al. **Cyanoacrylate embolization of experimental aneurysms.** *AJNR Am J Neuroradiol* 2002;23:129–138
10. Raymond J, Desfaits AC, Roy D. **Fibrinogen and vascular smooth muscle cell grafts promote healing of experimental aneurysms treated by embolization.** *Stroke* 1999;30:1657–1664
11. Cloft HJ, Altes TA, Marx WF, et al. **Endovascular creation of an in vivo bifurcation aneurysm model in rabbits.** *Radiology* 1999;213:223–228
12. Byrne JV, Hope JKA, Hubbard N, Morris JH. **The nature of thrombosis induced by platinum and tungsten coils in saccular aneurysms.** *Am J Neuroradiol* 1997;18:29–33