

Are your **MRI contrast agents** cost-effective?

Learn more about generic **Gadolinium-Based Contrast Agents**.



**FRESENIUS
KABI**

caring for life

AJNR

**Posterior Reversible Encephalopathy
Syndrome, Part 1: Fundamental Imaging and
Clinical Features**

W.S. Bartynski

AJNR Am J Neuroradiol 2008, 29 (6) 1036-1042

doi: <https://doi.org/10.3174/ajnr.A0928>

<http://www.ajnr.org/content/29/6/1036>

This information is current as
of April 16, 2024.

Posterior Reversible Encephalopathy Syndrome, Part 1: Fundamental Imaging and Clinical Features

REVIEW ARTICLE

W.S. Bartynski

SUMMARY: Posterior reversible encephalopathy syndrome (PRES) is a neurotoxic state coupled with a unique CT or MR imaging appearance. Recognized in the setting of a number of complex conditions (preeclampsia/eclampsia, allogeneic bone marrow transplantation, organ transplantation, autoimmune disease and high dose chemotherapy) the imaging, clinical and laboratory features of this toxic state are becoming better elucidated. This review summarizes the basic and advanced imaging features of PRES, along with pertinent features of the clinical and laboratory presentation and available histopathology. Many common imaging/clinical/laboratory observations are present among these patients, despite the perception of widely different associated clinical conditions.

Initially recognized in association with eclampsia, cyclosporine after transplantation, and in the setting of severe hypertension, posterior reversible encephalopathy syndrome (PRES) has become synonymous with a unique pattern of brain vasogenic edema seen in the setting of neurotoxicity.¹⁻¹⁴ On CT or MR imaging studies, the edema is often widespread but predominates in the parietal and occipital regions, likely leading Hinchey et al¹⁵ to suggest the “posterior” description.

A substantial experience with PRES has evolved; and though more widely recognized, controversy still exists as to the mechanism responsible for the brain edema. Specifically, what is the role of hypertension and is the edema related to hyperperfusion or hypoperfusion? In this review, the fundamental clinical and imaging features of PRES will be emphasized with controversial issues to follow.

Imaging Patterns in PRES

At CT/MR imaging, the brain typically demonstrates focal regions of symmetric hemispheric edema (Fig 1A, -B). The parietal and occipital lobes are most commonly affected, followed by the frontal lobes, the inferior temporal-occipital junction, and the cerebellum.¹⁶⁻¹⁸ Lesion confluence may develop as the extent of edema increases. MR diffusion-weighted imaging (DWI) was instrumental in establishing and consistently demonstrating that the areas of abnormality represent vasogenic edema.¹⁹⁻²⁴ The edema usually completely reverses.

The basic PRES pattern resembles the brain watershed zones, with the cortex and subcortical and deep white matter involved to varying degrees.^{12,14,16,25,26} Three hemispheric pattern variants may be encountered with similar frequency (holohemispheric [Fig 1], superior frontal sulcal, and primary parietal-occipital).²⁷ These demarcate lateral hemispheric blood supply (middle cerebral artery [MCA]) and medial hemispheric supply (anterior cerebral artery [ACA], posterior cerebral artery [PCA]) and further reflect the junctional/watershed nature of PRES.

Characteristic lesion locations such as the inferior tempo-

ral-occipital junction, superior frontal sulcus, and parietal/occipital region likely represent junctional expression between second-order branches or distal hemispheric branches.¹⁶ Linearly oriented focal deep white matter involvement may represent expression of PRES in the deep (intrahemispheric) watershed.²⁷ A continuum is noted between diminutive and extensive expression of PRES; and partial, asymmetric, or mixed forms of these patterns may be encountered.

Focal/patchy areas of PRES vasogenic edema may also be seen in the basal ganglia, brain stem, and deep white matter (external/internal capsule).^{20,27-31} When they accompany hemispheric or cerebellar PRES, it is easy to recognize these areas as companion lesions. Present in isolation or when the hemispheric pattern is incompletely expressed (partial/asymmetric), the diagnosis of PRES can be challenging.^{27,32} If cerebellar or brain stem involvement are extensive, hydrocephalus and brain stem compression may occur.³³⁻³⁵

Focal areas of restricted diffusion (likely representing infarction or tissue injury with cytotoxic edema) are uncommon (11%–26%) and may be associated with an adverse outcome.^{20,21} Hemorrhage (focal hematoma, isolated sulcal/subarachnoid blood, or protein) is seen in approximately 15% of patients.^{16,27,32}

Basic Clinical Features of Neurotoxicity with PRES

Patients at risk for PRES are summarized in the Table. Neurotoxicity with characteristic watershed CT/MR imaging features was initially noted in eclampsia, allogeneic bone marrow transplantation (allo-BMT), solid organ transplantation (SOT), and in association with severe hypertension. With similar clinical/imaging presentation recognized the mid 1990s, additional associations were noted (autoimmune conditions, thrombotic thrombocytopenic purpura, and medical renal disease), and the term “PRES” was introduced.^{15,20,22} PRES is seen with unique or high-dose cancer chemotherapy (Table) and has recently been associated with infection, sepsis, and shock.³⁶ Additional considerations have been suggested in numerous case reports as reviewed in the Table.

Clinical/Laboratory Characteristics in PRES

Clinical symptoms at toxicity are broad but include headache, vision change, paresis, hemianopsia, nausea, and altered mentation.^{37,38} Symptoms may develop over several days or may be recognized only in the acute setting. Generalized seizures

Received and accepted November 5, 2007.

From the Department of Radiology, Division of Neuroradiology, University of Pittsburgh, Presbyterian University Hospital, Pittsburgh, Pa.

Please address correspondence to Walter S. Bartynski, MD, Department of Radiology, Division of Neuroradiology, University of Pittsburgh, Presbyterian University Hospital, 200 Lothrop St, D 132, Pittsburgh PA 15213; e-mail: bartynskiws@upmc.edu

DOI 10.3174/ajnr.A0928

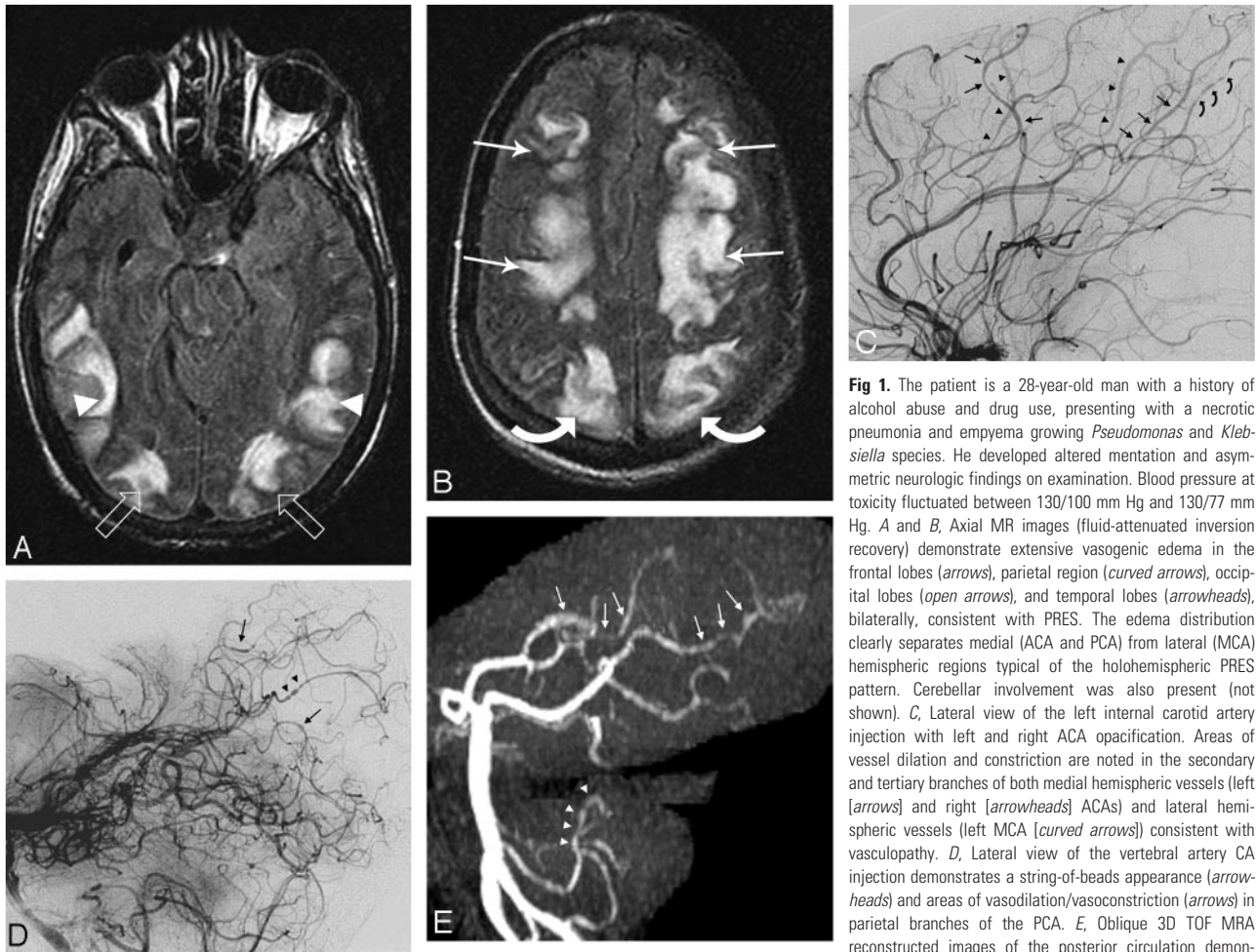


Fig 1. The patient is a 28-year-old man with a history of alcohol abuse and drug use, presenting with a necrotic pneumonia and empyema growing *Pseudomonas* and *Klebsiella* species. He developed altered mentation and asymmetric neurologic findings on examination. Blood pressure at toxicity fluctuated between 130/100 mm Hg and 130/77 mm Hg. **A** and **B**, Axial MR images (fluid-attenuated inversion recovery) demonstrate extensive vasogenic edema in the frontal lobes (arrows), parietal region (curved arrows), occipital lobes (open arrows), and temporal lobes (arrowheads), bilaterally, consistent with PRES. The edema distribution clearly separates medial (ACA and PCA) from lateral (MCA) hemispheric regions typical of the holo-hemispheric PRES pattern. Cerebellar involvement was also present (not shown). **C**, Lateral view of the left internal carotid artery injection with left and right ACA opacification. Areas of vessel dilation and constriction are noted in the secondary and tertiary branches of both medial hemispheric vessels (left [arrows] and right [arrowheads] ACAs) and lateral hemispheric vessels (left MCA [curved arrows]) consistent with vasculopathy. **D**, Lateral view of the vertebral artery CA injection demonstrates a string-of-beads appearance (arrowheads) and areas of vasodilation/vasoconstriction (arrows) in parietal branches of the PCA. **E**, Oblique 3D TOF MRA reconstructed images of the posterior circulation demonstrate areas of focal vasodilation and vasoconstriction in the PCAs bilaterally (arrows), consistent with vasculopathy, similar to the vertebral artery CA appearance. Posterior inferior cerebellar artery (arrowheads) irregularity is also present.

are common and coma may develop. In approximately 70%–80% of patients, moderate-to-severe hypertension is observed. Toxicity blood pressure is normal or only minimally elevated in 20%–30% of patients in eclampsia, allo-BMT, and most large reported PRES series.^{11,15,17,22,27,39–42}

Best studied in preeclampsia/eclampsia, laboratory evidence of endothelial injury is often present with platelet consumption (thrombocytopenia) and evidence of red cell fragmentation (schistocyte formation, increase in lactate dehydrogenase [LDH]).^{43,44} Developing hypertension in preeclampsia is related to systemic vasoconstriction with accompanying reduced intravascular volume and hemoconcentration. Renal dysfunction with proteinuria and hypomagnesemia occur; systemic edema develops due to a combination of altered endothelial function and reduced oncotic pressure. Hepatic ischemia may lead to liver dysfunction and, when severe, hemolysis, elevated liver enzymes, and low platelets (HELLP) syndrome.

In infection/sepsis/shock-associated PRES, a clinical pattern consistent with systemic inflammatory response syndrome develops with evidence of multiple organ dysfunction syndrome (MODS), including alteration of coagulation (thrombocytopenia), liver function (increased bilirubin), renal function (increased creatinine), pulmonary function, and cardiovascular instability.³⁶

Similar features may develop in patients after allo-BMT. The effects of graft-versus-host disease (GVHD) are managed by immune suppression with cyclosporine or tacrolimus (FK-506). Cyclosporine can injure the endothelium.^{45,46} At toxicity, diffuse endothelial dysfunction is often present, termed “bone marrow transplant thrombotic microangiopathy,” with development of significant schistocyte counts (exceeding 10% when severe) and marked elevation of LDH.^{16,17,47} A MODS pattern can develop with systemic or pulmonary edema and ischemic hepatic dysfunction, similar to preeclampsia.⁴⁸

Major PRES-Associated Clinical “Conditions”

Preeclampsia/Eclampsia. The association of PRES with toxemia of pregnancy is well established.^{1–3,5,21,24,26,49,50} Preeclampsia develops in approximately 5% of pregnancies and eclampsia, in approximately 1 in 3000 births with current management.^{43,44} Eclampsia develops before gestation in 50% of patients, interpartum in 25%, and within 48 hours of delivery in 25%. Although most women are hypertensive at toxicity, blood pressure is reported as normal or only minimally elevated in 23% of patients.³⁹ The placenta is thought to be the primary cause of toxemia, with placenta removal and fetal delivery considered curative.^{43,44}

“Delayed Eclampsia” (PRES within several weeks after delivery) can occur, and the clinical presentation is often confus-

Conditions at risk for PRES

Conditions

Toxemia of pregnancy (preeclampsia/eclampsia)

Posttransplantation:

allo-BMT

SOT

Immune suppression:

Cyclosporine

Tacrolimus (FK-506)

Infection/sepsis/shock:

Systemic inflammatory response syndrome

Multiorgan dysfunction syndrome

Autoimmune diseases:

Systemic lupus erythematosus

Systemic sclerosis (scleroderma)

Wegener's

Polyarteritis nodosa

Status-post cancer chemotherapy:

Combination high-dose chemotherapy

Reported miscellaneous drugs

Cytarabine^{a,b}

Cisplatin^c

Gemcitabine^d

Tiazofurin^e

Bevacizumab (Avastin)^{f,g}

Kinase inhibitor BAY 34-9006^h

Miscellaneous reported associations

Hypomagnesemia^{i,j}

Hypercalcemia^{k,l}

Hypocholesterolemia^m

Intravenous immunoglobulinⁿ

Guillain-Barré syndrome^o

Ephedra overdose^p

Dislysis/erythropoietin^q

Triple-H therapy^{r,s}

Tumor lysis syndrome^{t,u}

Hydrogen peroxide^v

Dimethyl sulfoxide stem cells^w

^{a,b} Patel AG. *J Comput Assist Tomogr* 1996;20:161-62; Vaughn DJ. *AJNR Am J Neuro-radiol* 1993;14:1014-16

^c Ito Y. *AJNR Am J Neuroradiol* 1998;19:415-17

^d Russell MT. *Magn Reson Imaging* 2001;19:129-32

^e Rippe DJ. *J Comput Assist Tomogr* 1988;12:1078-81

^{f,g} Glusker P. *N Engl J Med* 2006;354:980-82, discussion 980-82; Ozcan C. *N Engl J Med* 2006;354:980-82, discussion 980-82

^h Govindarajan R. *J Clin Oncol* 2006;24:e48

^{i,j} Thompson CB. *Lancet* 1984;2:1116-20; Al-Rasheed AK. *Pediatr Neurol* 2000;23:353-56

^{k,l} Choudhary M. *Scand J Infect Dis* 2005;37:524-26; Kim JH. *Eur Neurol* 2005;53:160-62

^m de Groen PC. *N Engl J Med* 1987;317:861-66

ⁿ Voltz R. *Neurology* 1996;46:250-51

^o Elahi A. *Neurocrit Care* 2004;1:465-68

^p Moawad FJ. *South Med J* 2006;99:511-14

^q Delanty N. *Neurology* 1997;49:686-89

^{r,s} Sanelli PC. *Neurocrit Care* 2005;3:46-50; Wartenberg KE. *J Neuroimaging* 2006;16:170-75

^{t,u} Kaito E. *Pediatr Radiol* 2005;35:722-27; Greenwood MJ. *Leuk Lymphoma* 2003;44:719-21

^v Cannon G. *J Child Neurol* 2003;18:805-08

^w Higman MA. *Bone Marrow Transplant* 2000;26:797-00

ing.^{4,51} Blood pressure may be normal or mildly elevated, severe headache is common, and conventional angiography is often performed to exclude intracranial aneurysm. In a recently reported case, delayed eclampsia appeared to have been associated with retained placental fragments.⁵² PRES has also been reported 3 weeks following resection and chemotherapy for hydatidiform mole.⁵³

Infection/Sepsis/Shock. In infection, sepsis, and shock-associated PRES, gram-positive organisms predominate, and in 40% of patients, toxicity blood pressure is normal or only minimally increased.³⁶ At imaging, vasogenic edema is greater in normotensive patients and lower in severely hypertensive

patients; and at MR angiography (MRA), reversible "vasculopathy" (diffuse/focal vasoconstriction) or vessel pruning is noted.³⁶ Recent reports note PRES in the setting of post-streptococcal glomerulonephritis, Henoch-Schonlein purpura, and infection-induced hypercoagulable state.⁵⁴⁻⁵⁶

Autoimmune Disease. PRES has been identified in patients with systemic lupus erythematosus, Wegener's granulomatosis, systemic sclerosis (scleroderma, Fig 2), and polyarteritis nodosa.^{15,20,22,27,57-60} Detailed accounts of the clinical circumstances surrounding PRES in association with autoimmune disease are infrequent.⁵⁷⁻⁶⁰ Patients are commonly managed with intermittent doses of immunosuppression (cyclophosphamide, cyclosporine) for disease control.

Cancer Chemotherapy. PRES is usually encountered after high-dose multidrug cancer therapy, typically in hematopoietic malignancies.⁶¹⁻⁶⁴ A variety of cancer chemotherapeutic drugs have also been noted in association with PRES (Table).

Transplantation. PRES is well recognized in the setting of bone marrow or stem cell transplantation.^{11,17,18,65-68} The incidence of PRES after allo-BMT using myeloablative marrow preconditioning and cyclosporine immune suppression is approximately 7%-9% and appears to vary with a preconditioning regimen.^{11,67,69} A greater frequency (16%) is reported with higher dose myeloablative regimens, and a lower frequency (3%) is noted with nonmyeloablative preconditioning.^{65,69} PRES occurs most commonly in the first month after allo-BMT, with the remainder during the subsequent year after transplantation.^{11,40,67,69} Reported incidence of PRES with tacrolimus immune suppression appears variable.^{66,68} A high incidence of GVHD is also noted in patients with allo-BMT PRES, and a GVHD effect has been suggested.^{68,70-72} Variation in cyclosporine toxicity with human leukocyte antigen match has been noted, and the rate of tacrolimus-associated PRES appears to increase with the degree of graft mismatch.^{66,67}

PRES is also noted after SOT.^{9,12,13,34,40,73-80} The reported incidence of PRES after SOT varies between 0.4% and 6%.^{78,81} The onset of PRES varies among subtypes but tends to occur earlier after liver transplantation.⁸¹ Systemic hypertension was found to be common in patients who develop PRES after renal transplantation but uncommon after heart, lung, or liver transplantation.^{77,81,82} In our experience, transplant rejection and infection often accompany PRES in SOT.⁸³ After liver transplantation, PRES typically occurs early (within 2 months after transplantation), blood pressure tends to be normal, and the extent of brain edema is significant. In contrast, patients with kidney transplantation appear to develop PRES late after transplantation, are severely hypertensive, and have significantly less brain edema.⁸³

After transplantation, several PRES-related risks coexist. The immune-suppressive drugs cyclosporine/tacrolimus (FK-506) inhibit T-cell activation, proliferation, and interleukin-2 production through inhibition of the calcineurin pathway.^{84,85} These drugs are associated with low-level neurotoxicity in 10%-40% of patients (tremors, anxiety, psychiatric dysfunction).^{37,86} Immunosuppressant blood levels do not appear to correlate with severe neurotoxicity or PRES, but immunosuppressant discontinuation or switch usually results in clinical improvement.^{11,37,67,69,77,86,87} Cyclosporine can induce endothelial injury/dysfunction leading to enhanced vasoconstrictive effects (increased endothelin and thrombox-

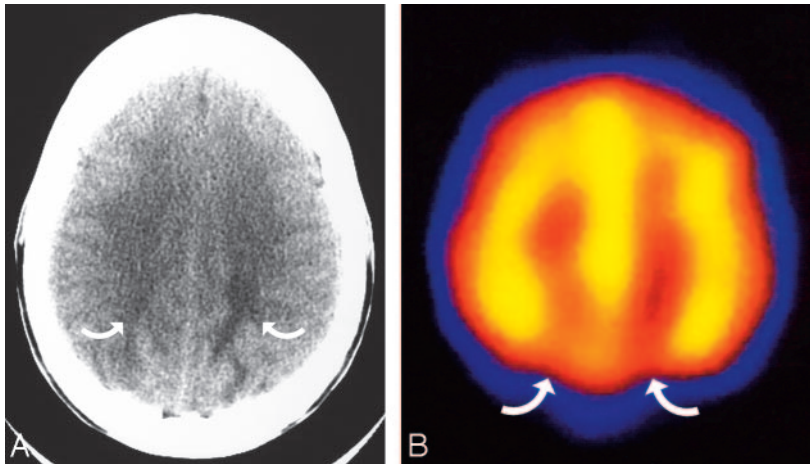


Fig 2. The patient is a 38-year-old woman with scleroderma, severe hypertension (190/110 mm Hg), and acute renal failure, with altered mental status that progressed to seizure. *A*, Axial brain CT image obtained at toxicity demonstrates vasogenic edema in the parietal region bilaterally (*curved arrows*), consistent with PRES. *B*, Axial technetiumTc-99m-HMPAO SPECT study performed the following day demonstrates reduced radiopharmaceutical uptake bilaterally in the parietal region (*curved arrows*), consistent with hypoperfusion.

and organized thrombi.^{11,101} Acute vasculopathy has also been described in a patient with a liver transplant with vessel inflammation and adjacent deep basal ganglia and periventricular infarction.¹⁰²

Advanced Imaging in PRES

Cerebral Blood Vessels in PRES

At catheter angiography (CA), diffuse vasoconstriction, focal vasoconstriction, vasodilation, and even a string-of-beads appearance have been noted in PRES, consistent with what is typically described as vasospasm or arteritis (Fig 1C, -D).^{2,4,14,51,54,103,104} Reported blood pressure in most of these patients demonstrated moderate but not severe hypertension (mean arterial pressure <130 mm Hg). CA in PRES is typically performed in eclampsia, delayed eclampsia, and after cancer chemotherapy, usually in the setting of a clinical presentation in which aneurysm is suspected.

At MRA using a 3D time of flight (TOF) technique, patterns resembling vasculopathy have been noted, with vessel irregularity consistent with focal vasoconstriction/vasodilation and diffuse vasoconstriction (Fig 1E).^{17,36,60,95,103,105-108} When performed, repeat MRA often demonstrates reversal of the vasculopathy. In normotensive patients, vessels may appear normal or demonstrate pruning of distal intracranial branches, in particular the PCAs.³⁶

Abnormal internal carotid or vertebral arteries have, on occasion, been noted in PRES, with intimal irregularity resembling fibromuscular disease demonstrated by CA in delayed eclampsia and dissection noted in PRES on MRA.^{51,109} These CA/MRA features reflect previously described vessel histologic observations. MR venography has tended to be normal in PRES.¹⁰⁷

Cerebral Blood Flow in PRES

The state of brain blood flow in PRES remains controversial (Review, Part 2). Vasoconstriction seen by CA in early studies prompted the authors to postulate that reduced brain perfusion led to the imaging features. In contrast, animal studies suggested that experimentally induced hypertension above the autoregulatory limit (mean arterial pressure >150–160 mm Hg) led to hyperperfusion, breakdown of the blood-brain barrier, and hemispheric edema.

Hyperperfusion was suggested in a single patient with PRES and Wegener's in an early study using technetium Tc99m-hexamethylpropyleneamine oxime (Tc99m-HMPAO) single-photon emission CT (SPECT), with a second patient (eclamptic) demonstrating variable radiotracer distribution.¹⁸ In a later study, increased Tc99m-HMPAO SPECT activity suggesting hyperperfusion was reported in a single patient with a molar pregnancy and eclampsia.¹¹⁰ In patients

ane, decreased nitric oxide and prostacycline), increased sympathetic activation, and coagulation effects.^{37,45-47,84,88} Immune challenge from the transplant (transplant rejection, GVHD), effects of chemotherapy (preconditioning), and the risks of infection in the immunosuppressed state may further contribute to toxicity. Clearly, a balance exists between adequate immunosuppression and infection risk.

Hypertension. PRES is commonly seen in the setting of hypertension. The upper limits of autoregulation are not typically reached, but moderate-to-severe hypertension is seen in approximately 75% of patients with PRES. Often termed "hypertensive encephalopathy," the reported imaging patterns can vary.^{6-8,35,89-93} Areas of deep white matter abnormality have been noted, which may overlap with lacunar disease and may relate to the known histologic findings in hypertension.^{8,93,94} Hemispheric PRES patterns have been reported as well as isolated reversible brain stem and cerebellar edema, occasionally resulting in obstructive hydrocephalus.³⁵

Recurrent PRES

Recurrent PRES has been anecdotally reported in severe hypertension and after allo-BMT.^{66,80} In a recent reported series, recurrent PRES was noted in 3 (3.8%) of 78 patients and was associated with sickle-cell disease with infection, allo-BMT with infection, or atypical autoimmune disease and possible viral infection.⁹⁵ Recurrent eclampsia is well recognized with a reported incidence of ~2% of live births.⁹⁶

Histopathology in PRES

Histologic evaluation of PRES is uncommon and often obtained late in the course of complex systemic disease. Biopsy/autopsy obtained during acute toxicity demonstrates vasogenic edema, paralleling observations on DWI.^{17,76,97-99} Activated/reactive astrocytes, scattered macrophages, and lymphocytes have been often noted without inflammation, ischemia, or neuronal damage. Late autopsy studies have generally demonstrated evidence of demyelination and myelin pallor along with evidence of ischemia, neuronal anoxic damage, laminar necrosis, or older hemorrhage in the white matter and cortex.^{11,13,17,100}

Evidence of acute and chronic vessel injury has been described in late autopsy studies with identification of intimal thickening, segmental vessel narrowing, intimal dissection,

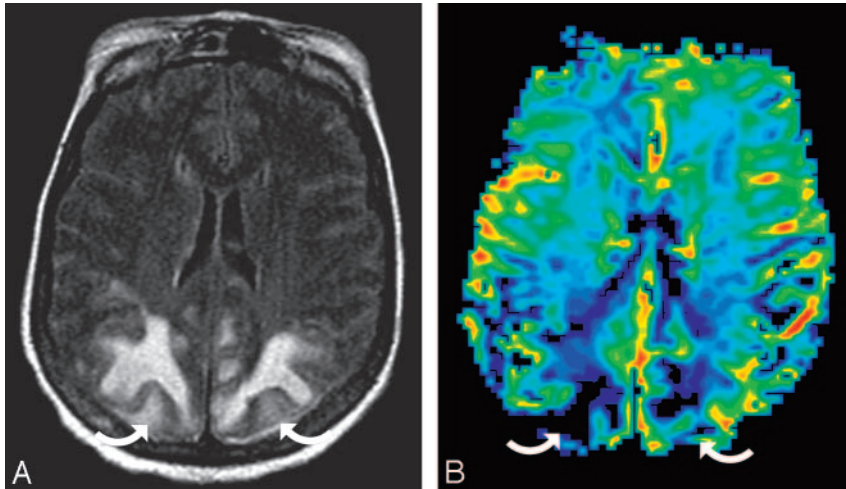


Fig 3. The patient is a 56-year-old woman with a thigh abscess (*Klebsiella* and *Enterococcus* species), baseline blood pressure of 156/68 mm Hg, and multiple organ failure (coagulopathy, acute respiratory distress syndrome, hepatic dysfunction with shock liver, and renal failure). She developed altered mentation and a seizure with toxicity blood pressure 164/75 mm Hg. *A*, Axial MR image (fluid-attenuated inversion recovery sequence) demonstrates extensive PRES vasogenic edema in the parietal region bilaterally (curved arrows). *B*, rCBV color map demonstrates severe flow reduction in the parietal region bilaterally (curved arrows), consistent with the regions of PRES imaging abnormality. PRES cortex rCBV relative to the reference cortex is 31% in the right parietal and 33% in the left parietal region.

with aneurysmal subarachnoid hemorrhage and vasospasm, Tc99m-HMPAO studies demonstrated patterns of variable perfusion.¹¹¹ Increased radiopharmaceutical activity in Tc99m-HMPAO brain studies has been noted in many circumstances associated with stroke but remains controversial.¹¹²

In contrast, watershed hypoperfusion has been demonstrated by using Tc99m-HMPAO SPECT in a large series of women with eclampsia, with focal hypoperfusion also noted after chemotherapy and in autoimmune disease (Fig 2).^{63,113} Reduced perfusion has also been demonstrated using MR perfusion (MRP) in PRES (Fig 3).^{103,114,115} Cortex and white matter relative cerebral blood volume (rCBV) has been shown to be reduced moderately in areas of PRES (average, 65%), when compared with normal uninvolved regions in 2 studies.^{103,115} Comparing anterior-to-posterior hemispheric flow, Brubaker et al¹¹⁴ found that MRP has also demonstrated significant posterior brain hypoperfusion with increased mean transit time, reduced CBV, and reduced cerebral blood flow.¹¹⁴ Critical cortex hypoperfusion (12.2 mL/100 g brain per minute) has been demonstrated by stable xenon CT after blood pressure reduction in a child with hypertensive encephalopathy and PRES, which partially reversed with re-established moderate hypertension (mean arterial pressure, 114 mm Hg).¹¹⁶

Proton MR Spectroscopy in PRES

Reduced *N*-acetylaspartate:choline and *N*-acetylaspartate:creatinine ratios have been described by MR spectroscopy in regions of PRES vasogenic edema as well as in unaffected regions.^{107,117,118} Quantitative metabolite assessment in 2 patients demonstrated an absolute reduction of metabolite concentration (considered a dilution effect from vasogenic edema), which corrected in 1 patient on follow-up MR spectroscopy.¹¹⁷ Abnormal metabolite ratios may persist.¹⁰⁷ Lactate has been reported in PRES, and when accompanied by vasoconstriction, a contribution from ischemia has been suggested.^{42,107}

The Controversy over the Mechanism of PRES

The cause of PRES is not yet understood. Hypertension with failed autoregulation and hyperperfusion remains a popular consideration for the developing brain edema.^{18,92,119,120} Alternatively, endothelial dysfunction/injury, hypoperfusion,

and vasoconstriction may lead to altered integrity of the blood-brain barrier.^{4,121,122}

Although commonly cited, several problems exist with the hypertension/hyperperfusion theory.

PRES is seen in the absence of hypertension in 20%–40% of patients.^{17,27,36,39} In the remainder, though some degree of hypertension is present, reported blood pressure does not typically reach the limit of autoregulation (mean arterial pressure >150–160 mm Hg).¹²³ Also, several recent studies have noted less vasogenic edema in severely hypertensive patients when compared with normotensive patients, contrary to the expected result if severe hypertension with failed autoregulation was the mechanism behind PRES.^{36,103} The biologic observations (strengths/weaknesses) related to both theories will be reviewed in detail in Part 2.

Conclusion

PRES develops in patients with complex systemic conditions such as eclampsia, after transplantation, in infection/sepsis/shock and autoimmune disease, and after cancer chemotherapy. Hypertension is absent in ~25% of patients and, when present, does not typically reach the level of failed autoregulation. The imaging appearance typically demonstrates symmetric vasogenic edema with several characteristic patterns, generally representing a distribution between lateral and medial cerebral arterial branches (ie, a watershed distribution). Vasculopathy is commonly identified by CA or MRA, and most studies have demonstrated reduced brain perfusion in regions of PRES. The mechanism responsible for the imaging appearance remains unclear and controversial.

References

- Colosimo C Jr, Fileni A, Moschini M, et al. CT findings in eclampsia. *Neuroradiology* 1985;27:313–17
- Lewis LK, Hinshaw DB Jr, Will AD, et al. CT and angiographic correlation of severe neurological disease in toxemia of pregnancy. *Neuroradiology* 1988;30:59–64
- Naheedy MH, Biller J, Schiffer M, et al. Toxemia of pregnancy: cerebral CT findings. *J Comput Assist Tomogr* 1985;9:497–501
- Trommer BL, Homer D, Mikhael MA. Cerebral vasospasm and eclampsia. *Stroke* 1988;19:326–29
- Waldron RL 2nd, Abbott DC, Vellody D, et al. Computed tomography in preeclampsia-eclampsia syndrome. *AJNR Am J Neuroradiol* 1985;6:442–43
- Fisher M, Maister B, Jacobs R. Hypertensive encephalopathy: diffuse reversible white matter CT abnormalities. *Ann Neurol* 1985;18:268–70
- Rail DL, Perkin GD. Computerized tomographic appearance of hypertensive encephalopathy. *Arch Neurol* 1980;37:310–11
- Weingarten K, Barbut D, Filippi C, et al. Acute hypertensive encephalopathy: findings on spin-echo and gradient-echo MR imaging. *AJR Am J Roentgenol* 1994;162:665–70
- de Groen PC, Aksamit AJ, Rakela J, et al. Central nervous system toxicity after

- liver transplantation: the role of cyclosporine and cholesterol. *N Engl J Med* 1987;317:861–66
10. Ghalie R, Fitzsimmons WE, Bennett D, et al. **Cortical blindness: a rare complication of cyclosporine therapy.** *Bone Marrow Transplant* 1990;6:147–49
 11. Reece DE, Frei-Lahr DA, Shepherd JD, et al. **Neurologic complications in allogeneic bone marrow transplant patients receiving cyclosporin.** *Bone Marrow Transplant* 1991;8:393–401
 12. Truwit CL, Denaro CP, Lake JR, et al. **MR imaging of reversible cyclosporin A-induced neurotoxicity.** *AJNR Am J Neuroradiol* 1991;12:651–59
 13. Wilson SE, de Groen PC, Aksamit AJ, et al. **Cyclosporin A-induced reversible cortical blindness.** *J Clin Neuroophthalmol* 1988;8:215–20
 14. Will AD, Lewis KL, Hinshaw DB, et al. **Cerebral vasoconstriction in toxemia.** *Neurology* 1987;37:1555–57
 15. Hinchey J, Chaves C, Appignani B, et al. **A reversible posterior leukoencephalopathy syndrome.** *N Engl J Med* 1996;334:494–500
 16. Bartynski WS, Grabb BC, Zeigler Z, et al. **Watershed imaging features and clinical vascular injury in cyclosporin A neurotoxicity.** *J Comput Assist Tomogr* 1997;21:872–80
 17. Bartynski WS, Zeigler Z, Spearman MP, et al. **Etiology of cortical and white matter lesions in cyclosporin-A and FK-506 neurotoxicity.** *AJNR Am J Neuroradiol* 2001;22:1901–14
 18. Schwartz RB, Bravo SM, Klufas RA, et al. **Cyclosporine neurotoxicity and its relationship to hypertensive encephalopathy: CT and MR findings in 16 cases.** *AJR Am J Roentgenol* 1995;165:627–31
 19. Ay H, Buonanno FS, Schaefer PW, et al. **Posterior leukoencephalopathy without severe hypertension: utility of diffusion-weighted MRI.** *Neurology* 1998;51:1369–76
 20. Covarrubias DJ, Luetner PH, Campeau NG. **Posterior reversible encephalopathy syndrome: prognostic utility of quantitative diffusion-weighted MR images.** *AJNR Am J Neuroradiol* 2002;23:1038–48
 21. Koch S, Rabinstein A, Falcone S, et al. **Diffusion-weighted imaging shows cytotoxic and vasogenic edema in eclampsia.** *AJNR Am J Neuroradiol* 2001;22:1068–70
 22. Mukherjee P, McKinstry RC. **Reversible posterior leukoencephalopathy syndrome: evaluation with diffusion-tensor MR imaging.** *Radiology* 2001;219:756–65
 23. Provenzale JM, Petrella JR, Cruz LC Jr, et al. **Quantitative assessment of diffusion abnormalities in posterior reversible encephalopathy syndrome.** *AJNR Am J Neuroradiol* 2001;22:1455–61
 24. Schaefer PW, Buonanno FS, Gonzalez RG, et al. **Diffusion-weighted imaging discriminates between cytotoxic and vasogenic edema in a patient with eclampsia.** *Stroke* 1997;28:1082–85
 25. Dahmus MA, Barton JR, Sibai BM. **Cerebral imaging in eclampsia: magnetic resonance imaging versus computed tomography.** *Am J Obstet Gynecol* 1992;167:935–41
 26. Raroque HG Jr, Orrison WW, Rosenberg GA. **Neurologic involvement in toxemia of pregnancy: reversible MRI lesions.** *Neurology* 1990;40:167–69
 27. Bartynski WS, Boardman JF. **Distinct imaging patterns and lesion distribution in posterior reversible encephalopathy syndrome.** *AJNR Am J Neuroradiol* 2007;28:1320–27
 28. Oliverio PJ, Restrepo L, Mitchell SA, et al. **Reversible tacrolimus-induced neurotoxicity isolated to the brain stem.** *AJNR Am J Neuroradiol* 2000;21:1251–54
 29. Casey SO, Truwit CL. **Pontine reversible edema: a newly recognized imaging variant of hypertensive encephalopathy?** *AJNR Am J Neuroradiol* 2000;21:243–45
 30. de Seze J, Mastain B, Stojkovic T, et al. **Unusual MR findings of the brain stem in arterial hypertension.** *AJNR Am J Neuroradiol* 2000;21:391–94
 31. Keswani SC, Wityk R. **Don't throw in the towel! A case of reversible coma.** *J Neurol Neurosurg Psychiatry* 2002;73:83–84
 32. McKinney AM, Short J, Truwit CL, et al. **Posterior reversible encephalopathy syndrome: incidence of atypical regions of involvement and imaging findings.** *AJR Am J Roentgenol* 2007;189:904–12
 33. Keyserling HF, Provenzale JM. **Atypical imaging findings in a near-fatal case of posterior reversible encephalopathy syndrome in a child.** *AJR Am J Roentgenol* 2007;188:219–21
 34. Nussbaum ES, Maxwell RE, Bitterman PB, et al. **Cyclosporine A toxicity presenting with acute cerebellar edema and brainstem compression: case report.** *J Neurosurg* 1995;82:1068–70
 35. Lin KL, Hsu WC, Wang HS, et al. **Hypertension-induced cerebellar encephalopathy and hydrocephalus in a male.** *Pediatr Neurol* 2006;34:72–75
 36. Bartynski WS, Boardman JF, Zeigler ZR, et al. **Posterior reversible encephalopathy syndrome in infection, sepsis, and shock.** *AJNR Am J Neuroradiol* 2006;27:2179–90
 37. Gijtenbeek JM, van den Bent MJ, Vecht CJ. **Cyclosporine neurotoxicity: a review.** *J Neurol* 1999;246:339–46
 38. Garg RK. **Posterior leukoencephalopathy syndrome.** *Postgrad Med J* 2001;77:24–28
 39. Sibai BM. **Eclampsia. VI. Maternal-perinatal outcome in 254 consecutive cases.** *Am J Obstet Gynecol* 1990;163:1049–54, discussion 1054–55
 40. Furukawa M, Terae S, Chu BC, et al. **MRI in seven cases of tacrolimus (FK-506) encephalopathy: utility of FLAIR and diffusion-weighted imaging.** *Neuroradiology* 2001;43:615–21
 41. Ishikura K, Ikeda M, Hamasaki Y, et al. **Posterior reversible encephalopathy syndrome in children: its high prevalence and more extensive imaging findings.** *Am J Kidney Dis* 2006;48:231–38
 42. Kwon S, Koo J, Lee S. **Clinical spectrum of reversible posterior leukoencephalopathy syndrome.** *Pediatr Neurol* 2001;24:361–64
 43. **Hypertensive disorders of pregnancy.** In: Cunningham FG, Gant NF, Leveno KJ, eds. *Williams Obstetrics*. 21st ed. New York: McGraw Hill; 2001:567–618
 44. Dekker GA, Sibai BM. **Etiology and pathogenesis of preeclampsia: current concepts.** *Am J Obstet Gynecol* 1998;179:1359–75
 45. Holler E, Kolb HJ, Hiller E, et al. **Microangiopathy in patients on cyclosporine prophylaxis who developed acute graft-versus-host disease after HLA-identical bone marrow transplantation.** *Blood* 1989;73:2018–24
 46. Zoja C, Furci L, Ghilardi F, et al. **Cyclosporin-induced endothelial cell injury.** *Lab Invest* 1986;55:455–62
 47. Zeigler ZR, Shaddock RK, Nemunaitis J, et al. **Bone marrow transplant-associated thrombotic microangiopathy: a case series.** *Bone Marrow Transplant* 1995;15:247–53
 48. Haire WD. **The multiple organ dysfunction syndrome in cancer patients undergoing hematopoietic stem cell transplantation.** *Semin Thromb Hemost* 1999;25:223–37
 49. Sanders TG, Clayman DA, Sanchez-Ramos L, et al. **Brain in eclampsia: MR imaging with clinical correlation.** *Radiology* 1991;180:475–78
 50. Schwartz RB, Feske SK, Polak JF, et al. **Preeclampsia-eclampsia: clinical and neuroradiographic correlates and insights into the pathogenesis of hypertensive encephalopathy.** *Radiology* 2000;217:371–76
 51. Bartynski WS, Sanghvi A. **Neuroimaging of delayed eclampsia: report of 3 cases and review of the literature.** *J Comput Assist Tomogr* 2003;27:699–713
 52. Delefosse D, Samain E, Helias A, et al. **Late onset of cortical blindness in a patient with severe preeclampsia related to retained placental fragments.** *Anesthesiology* 2003;98:261–63
 53. Malow BA, Sandson TA, Schwartz RB. **Reversible MRI lesions in eclampsia with hydatidiform mole.** *Neurology* 1990;40:1471–72
 54. Aeby A, David P, Frick C, et al. **Posterior reversible encephalopathy syndrome revealing acute post-streptococcal glomerulonephritis.** *J Child Neurol* 2006;21:250–51
 55. Ozcakar ZB, Ekim M, Fitoz S, et al. **Hypertension induced reversible posterior leukoencephalopathy syndrome: a report of two cases.** *Eur J Pediatr* 2004;163:728–30
 56. Yano Y, Kario K, Fukunaga T, et al. **A case of reversible posterior leukoencephalopathy syndrome caused by transient hypercoagulable state induced by infection.** *Hypertens Res* 2005;28:619–23
 57. Kur JK, Esdaile JM. **Posterior reversible encephalopathy syndrome: an underrecognized manifestation of systemic lupus erythematosus.** *J Rheumatol* 2006;33:2178–83
 58. Magnano MD, Bush TM, Herrera I, et al. **Reversible posterior leukoencephalopathy in patients with systemic lupus erythematosus.** *Semin Arthritis Rheum* 2006;35:396–402
 59. Primavera A, Audenino D, Mavilio N, et al. **Reversible posterior leukoencephalopathy syndrome in systemic lupus and vasculitis.** *Ann Rheum Dis* 2001;60:534–37
 60. Thaipisuttikul I, Phanthumchinda K. **Recurrent reversible posterior leukoencephalopathy in a patient with systemic lupus erythematosus.** *J Neurol* 2005;252:230–31
 61. Cooney MJ, Bradley WG, Symko SC, et al. **Hypertensive encephalopathy: complication in children treated for myeloproliferative disorders—report of three cases.** *Radiology* 2000;214:711–16
 62. Morris EB, Laningham FH, Sandlund JT, et al. **Posterior reversible encephalopathy syndrome in children with cancer.** *Pediatr Blood Cancer* 2007;48:152–59
 63. Sanchez-Carpintero R, Narbona J, Lopez de Mesa R, et al. **Transient posterior encephalopathy induced by chemotherapy in children.** *Pediatr Neurol* 2001;24:145–48
 64. Pihko H, Tyni T, Virkola K, et al. **Transient ischemic cerebral lesions during induction chemotherapy for acute lymphoblastic leukemia.** *J Pediatr* 1993;123:718–24
 65. Kishi Y, Miyakoshi S, Kami M, et al. **Early central nervous system complications after reduced-intensity stem cell transplantation.** *Biol Blood Marrow Transplant* 2004;10:561–68
 66. Wong R, Beguelin GZ, de Lima M, et al. **Tacrolimus-associated posterior reversible encephalopathy syndrome after allogeneic haematopoietic stem cell transplantation.** *Br J Haematol* 2003;122:128–34
 67. Zimmer WE, Hourihane JM, Wang HZ, et al. **The effect of human leukocyte antigen disparity on cyclosporine neurotoxicity after allogeneic bone marrow transplantation.** *AJNR Am J Neuroradiol* 1998;19:601–08, discussion 609–10
 68. Kanekiyo T, Hara J, Matsuda-Hashii Y, et al. **Tacrolimus-related encephalopathy following allogeneic stem cell transplantation in children.** *Int J Hematol* 2005;81:264–68
 69. Bartynski WS, Zeigler ZR, Shaddock RK, et al. **Pretransplantation condition-**

- ing influence on the occurrence of cyclosporine or FK-506 neurotoxicity in allogeneic bone marrow transplantation. *AJNR Am J Neuroradiol* 2004;25:261–69
70. Bartynski WS, Zeigler ZR, Shaddock RK, et al. Variable incidence of cyclosporine and FK-506 neurotoxicity in hematopoietic malignancies and marrow conditions after allogeneic bone marrow transplantation. *Neurocrit Care* 2005;3:33–45
 71. Chohan R, Vij R, Adkins D, et al. Long-term outcomes of allogeneic stem cell transplant recipients after calcineurin inhibitor-induced neurotoxicity. *Br J Haematol* 2003;123:110–13
 72. Provenzale JM, Graham ML. Reversible leukoencephalopathy associated with graft-versus-host disease: MR findings. *AJNR Am J Neuroradiol* 1996;17:1290–94
 73. Jarosz JM, Howlett DC, Cox TC, et al. Cyclosporine-related reversible posterior leukoencephalopathy: MRI. *Neuroradiology* 1997;39:711–15
 74. Small SL, Fukui MB, Bramblett GT, et al. Immunosuppression-induced leukoencephalopathy from tacrolimus (FK506). *Ann Neurol* 1996;40:575–80
 75. Appignani BA, Bhadelia RA, Blacklow SC, et al. Neuroimaging findings in patients on immunosuppressive therapy: experience with tacrolimus toxicity. *AJR Am J Roentgenol* 1996;166:683–88
 76. Lanzino G, Cloft H, Hemstreet MK, et al. Reversible posterior leukoencephalopathy following organ transplantation: description of two cases. *Clin Neurol Neurosurg* 1997;99:222–26
 77. Shimono T, Miki Y, Toyoda H, et al. MR imaging with quantitative diffusion mapping of tacrolimus-induced neurotoxicity in organ transplant patients. *Eur Radiol* 2003;13:986–93
 78. Besenski N, Rumboldt Z, Emovon O, et al. Brain MR imaging abnormalities in kidney transplant recipients. *AJNR Am J Neuroradiol* 2005;26:2282–89
 79. Parvex P, Pinski M, Bell LE, et al. Reversible encephalopathy associated with tacrolimus in pediatric renal transplants. *Pediatr Nephrol* 2001;16:537–42
 80. Reinohs M, Straube T, Baum P, et al. Recurrent reversible cerebral edema after long-term immunosuppression with tacrolimus. *J Neurol* 2002;249:780–81
 81. Singh N, Bonham A, Fukui M. Immunosuppressive-associated leukoencephalopathy in organ transplant recipients. *Transplantation* 2000;69:467–72
 82. Wijdicks EF. Neurotoxicity of immunosuppressive drugs. *Liver Transpl* 2001;7:937–42
 83. Bartynski WS, Tan HP, Boardman JF, et al. Posterior reversible encephalopathy syndrome after solid organ transplantation. *AJNR Am J Neuroradiol* 2008;29:924–30
 84. Ramanathan V, Helderan JH. Cyclosporine formulations. In: Sayegh M, Remuzzi G, eds. *Current and Future Immunosuppressive Therapies Following Transplantation*. The Netherlands: Kluwer Academic; 2001:111–21
 85. Shapiro R. Tacrolimus. In: Sayegh M, Remuzzi G, eds. *Current and Future Immunosuppressive Therapies Following Transplantation*. The Netherlands: Kluwer Academic; 2001:123–42
 86. Wijdicks EFM. Neurologic manifestations of immunosuppressive agents. In: Wijdicks EFM, ed. *Neurologic Complications in Organ Transplant Recipients*. Boston: Butterworth-Heinemann; 1999:127–40
 87. Furlong T, Storb R, Anasetti C, et al. Clinical outcome after conversion to FK 506 (tacrolimus) therapy for acute graft-versus-host disease resistant to cyclosporine or for cyclosporine-associated toxicities. *Bone Marrow Transplant* 2000;26:985–91
 88. Kon V, Sugiura M, Inagami T, et al. Role of endothelin in cyclosporine-induced glomerular dysfunction. *Kidney Int* 1990;37:1487–91
 89. Hauser RA, Lacey DM, Knight MR. Hypertensive encephalopathy: magnetic resonance imaging demonstration of reversible cortical and white matter lesions. *Arch Neurol* 1988;45:1078–83
 90. Jones BV, Egelhoff JC, Patterson RJ. Hypertensive encephalopathy in children. *AJNR Am J Neuroradiol* 1997;18:101–06
 91. Kwong YL, Yu YL, Lam KS, et al. CT appearance in hypertensive encephalopathy. *Neuroradiology* 1987;29:215
 92. Schwartz RB, Jones KM, Kalina P, et al. Hypertensive encephalopathy: findings on CT, MR imaging, and SPECT imaging in 14 cases. *AJR Am J Roentgenol* 1992;159:379–83
 93. Weingarten KL, Zimmerman RD, Pinto RS, et al. Computed tomographic changes of hypertensive encephalopathy. *AJNR Am J Neuroradiol* 1985;6:395–98
 94. Chester EM, Agamanolis DP, Banker BQ, et al. Hypertensive encephalopathy: a clinicopathologic study of 20 cases. *Neurology* 1978;28:928–39
 95. Sweany JM, Bartynski WS, Boardman JF. “Recurrent” posterior reversible encephalopathy syndrome: report of 3 cases—PRES can strike twice! *J Comput Assist Tomogr* 2007;31:148–56
 96. Sibai BM, Sarinoglu C, Mercer BM. Eclampsia. VII. Pregnancy outcome after eclampsia and long-term prognosis. *Am J Obstet Gynecol* 1992;166(6 Pt 1):1757–61, discussion 1761–63
 97. Schiff D, Lopes MB. Neuropathological correlates of reversible posterior leukoencephalopathy. *Neurocrit Care* 2005;2:303–05
 98. Thyagarajan GK, Cobanoglu A, Johnston W. FK506-induced fulminant leukoencephalopathy after single-lung transplantation. *Ann Thorac Surg* 1997;64:1461–64
 99. Velu T, Debusscher L, Stryckmans PA. Cyclosporin-associated fatal convulsions. *Lancet* 1985;1:219
 100. Vaughn DJ, Jarvik JG, Hackney D, et al. High-dose cytarabine neurotoxicity: MR findings during the acute phase. *AJNR Am J Neuroradiol* 1993;14:1014–16
 101. Koide T, Yamada M, Takahashi T, et al. Cyclosporine A-associated fatal central nervous system angiopathy in a bone marrow transplant recipient: an autopsy case. *Acta Neuropathol* 2000;99:680–84
 102. Pizzolato GP, Sztajzel R, Burkhardt K, et al. Cerebral vasculitis during FK 506 treatment in a liver transplant patient. *Neurology* 1998;50:1154–57
 103. Bartynski WS, Boardman JF. Catheter angiography, MR angiography, and MR perfusion in posterior reversible encephalopathy syndrome. *AJNR Am J Neuroradiol*. 2008;29:447–55
 104. Geraghty JJ, Hoch DB, Robert ME, et al. Fatal puerperal cerebral vasospasm and stroke in a young woman. *Neurology* 1991;41:1145–47
 105. Ito T, Sakai T, Inagawa S, et al. MR angiography of cerebral vasospasm in preeclampsia. *AJNR Am J Neuroradiol* 1995;16:1344–46
 106. Lin JT, Wang SJ, Fuh JL, et al. Prolonged reversible vasospasm in cyclosporin A-induced encephalopathy. *AJNR Am J Neuroradiol* 2003;24:102–04
 107. Sengar AR, Gupta RK, Dhanuka AK, et al. MR imaging, MR angiography, and MR spectroscopy of the brain in eclampsia. *AJNR Am J Neuroradiol* 1997;18:1485–90
 108. Shbarou RM, Chao NJ, Morgenlander JC. Cyclosporin A-related cerebral vasculopathy. *Bone Marrow Transplant* 2000;26:801–04
 109. Mellion ML, Rizvi S. Spontaneous bilateral carotid artery dissection and posterior reversible encephalopathy syndrome. *Neurology* 2005;65:1990
 110. Apollon KM, Robinson JN, Schwartz RB, et al. Cortical blindness in severe preeclampsia: computed tomography, magnetic resonance imaging, and single-photon-emission computed tomography findings. *Obstet Gynecol* 2000;95:1017–19
 111. Lewis DH, Eskridge JM, Newell DW, et al. Brain SPECT and the effect of cerebral angioplasty in delayed ischemia due to vasospasm. *J Nucl Med* 1992;33:1789–96
 112. Sugawara Y, Ueda T, Kikuchi T, et al. Hyperactivity of 99mTc-HMPAO within 6 hours in patients with acute ischemic stroke. *J Nucl Med* 2001;42:1297–302
 113. Naidu K, Moodley J, Corr P, et al. Single photon emission and cerebral computerised tomographic scan and transcranial Doppler sonographic findings in eclampsia. *Br J Obstet Gynaecol* 1997;104:1165–72
 114. Brubaker LM, Smith JK, Lee YZ, et al. Hemodynamic and permeability changes in posterior reversible encephalopathy syndrome measured by dynamic susceptibility perfusion-weighted MR imaging. *AJNR Am J Neuroradiol* 2005;26:825–30
 115. Engelter ST, Petrella JR, Alberts MJ, et al. Assessment of cerebral microcirculation in a patient with hypertensive encephalopathy using MR perfusion imaging. *AJR Am J Roentgenol* 1999;173:1491–93
 116. Casey SO, McKinney A, Teksam M, et al. CT perfusion imaging in the management of posterior reversible encephalopathy. *Neuroradiology* 2004;46:272–76
 117. Eichler FS, Wang P, Wityk RJ, et al. Diffuse metabolic abnormalities in reversible posterior leukoencephalopathy syndrome. *AJNR Am J Neuroradiol* 2002;23:833–37
 118. Russell MT, Nassif AS, Cacayorin ED, et al. Gemcitabine-associated posterior reversible encephalopathy syndrome: MR imaging and MR spectroscopy findings. *Magn Reson Imaging* 2001;19:129–32
 119. Strandgaard S, Olesen J, Skinhoj E, et al. Autoregulation of brain circulation in severe arterial hypertension. *BMJ* 1973;1:507–10
 120. Dinsdale HB. Hypertensive encephalopathy. *Neurol Clin* 1983;1:3–16
 121. Coughlin WF, McMurdo SK, Reeves T. MR imaging of postpartum cortical blindness. *J Comput Assist Tomogr* 1989;13:572–76
 122. Toole JF. Lacunar syndromes and hypertensive encephalopathy. In: Toole JF, ed. *Cerebrovascular Disorders*. 5th ed. New York: Raven; 1999:342–55
 123. Zwienenberg-Lee M, Muizelaar JP. Clinical pathophysiology of traumatic brain injury. In: HR W, ed. *Youmans Neurological Surgery*. 5th ed. Philadelphia: Saunders; 2004:5039–64