

Are your **MRI contrast agents** cost-effective?

Learn more about generic **Gadolinium-Based Contrast Agents**.



**FRESENIUS
KABI**

caring for life

AJNR

**Dynamic Contrast-Enhanced MR:
Importance of Reaching the Washout Phase**

P. Alcaide-Leon and À. Rovira

AJNR Am J Neuroradiol 2013, 34 (5) E58-E59

doi: <https://doi.org/10.3174/ajnr.A3556>

<http://www.ajnr.org/content/34/5/E58>

This information is current as
of April 24, 2024.

Dynamic Contrast-Enhanced MR: Importance of Reaching the Washout Phase

We read with great interest the recent study published in the *American Journal of Neuroradiology* on November 22, 2012, entitled “T1-Weighted Dynamic Contrast-Enhanced MR Evaluation of Different Stages of Neurocysticercosis and Its Relationship with Serum MMP-9 Expression.”¹

In the Materials and Methods section, the authors describe their dynamic contrast-enhanced (DCE) study protocol as follows: “A series of 384 images during 32 time points for 12 sections were acquired (temporal resolution, 5.65 seconds).” However, 32 time points \times 5.65 seconds of temporal resolution results in a 3-minute-long DCE-MR study. The specific pharmacokinetic model and the postprocessing software used for calculation of the transfer constant (K^{trans}); rate constant between extracellular extravascular space and blood plasma (K_{ep}); and leakage space (V_e) are not stated in the article.

We have been using DCE-MR imaging as a part of our tumor protocol since 2010. We usually perform a 4-minute DCE study. With a study of this length, the washout phase is not usually reached in brain tumors. Inflammatory lesions such as neurocysticercosis are known to wash out much later than tumors as the result of their low permeability surface area product (PS).

In their article published in 1991, Tofts and Kermode² generated families of tracer concentration in tissue [Ct(t)] curves from their equation and demonstrated that for fixed permeability, increasing V_e has no effect on the initial slope but does affect the maximum concentration reached and delays the time to peak enhancement. From this assessment, we infer that reaching the washout phase is needed to obtain V_e and K_{ep} .

To confirm our hypothesis, we performed a 14-minute DCE study in a patient with pilocytic astrocytoma. Maximum enhance-

ment is reached at 5.8 minutes, and a slow washout curve then begins. We performed 2 different K_{ep} calculations: the first one by use of the first 3 minutes of the DCE study and the second one by use of the whole 15-minute sequence. Resulting K_{ep} values are as different as K_{ep} (3-minute DCE): 0.50 minutes⁻¹ and K_{ep} (14-minute DCE): 0.13 minutes⁻¹. T1 kinetic analysis was based on the 2-compartment extended pharmacokinetic model of Tofts and Kermode by use of nordicICE software (NordicImagingLab, Bergen, Norway) (Figs 1 and 2).

To sum up, the effect of not collecting for long enough to reach the washout phase would be that V_e and K_{ep} would be imprecise (ie, poor repeatability), and the performance of those biomarkers would be compromised. Available DCE software provides K_{ep} and V_e maps even without the data needed to support those calculations, and we should be aware of this fact.

ACKNOWLEDGMENTS

We thank Professor Paul Tofts for his help.

REFERENCES

1. Gupta RK, Awasthi R, Garg RK, et al. **T1-weighted dynamic contrast-enhanced MR evaluation of different stages of neurocysticercosis and its relationship with serum MMP-9 expression.** *AJNR Am J Neuroradiol* 2012 November 22, 2012 [Epub ahead of print]
2. Tofts PS, Kermode AG. **Measurement of the blood-brain barrier permeability and leakage space using dynamic MR imaging, 1: fundamental concepts.** *Magn Reson Med* 1991;17:357–67

P. Alcaide-Leon

MR Unit

Department of Radiology

Passeig de la Vall d'Hebron

Barcelona, Spain

À. Rovira

Hospital Universitari Vall d'Hebron

Barcelona, Spain

<http://dx.doi.org/10.3174/ajnr.A3556>

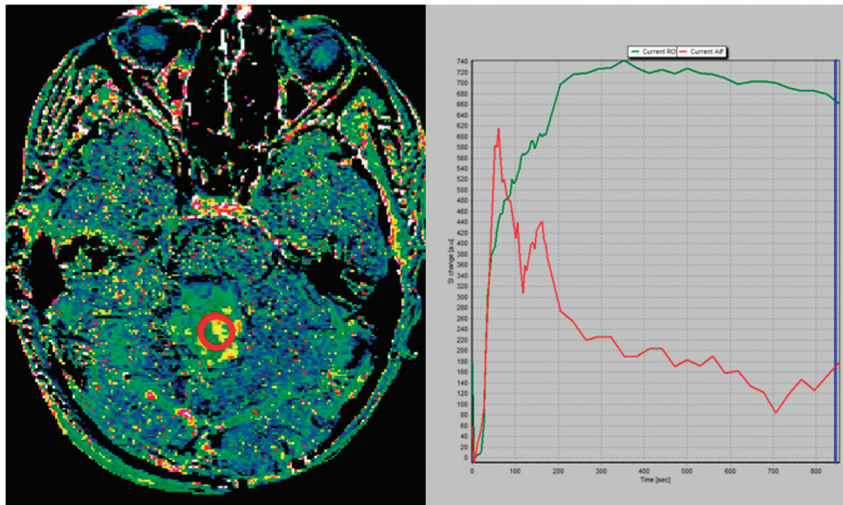


FIG 1. K_{ep} map obtained at 14 minutes in a cerebellar pilocytic astrocytoma (left image). Green curve represents the time–signal intensity curve of a region of interest (red circle in left image); red curve represents measured arterial input function; blue line corresponds to the last image considered for calculation (14 minutes) (right image). K_{ep} value calculated for the whole 14-minute DCE study was $0.13 \text{ minutes}^{-1}$.

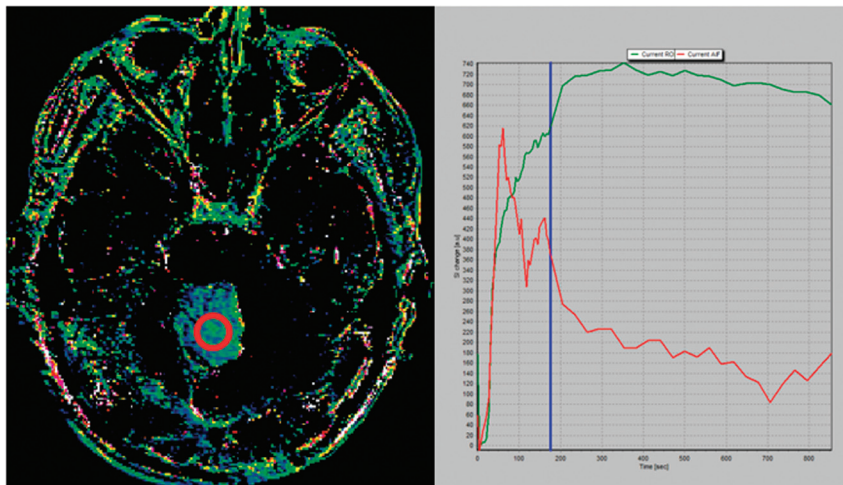


FIG 2. K_{ep} map obtained at 3 minutes in a cerebellar pilocytic astrocytoma (left image). Green curve represents the time–signal intensity curve of a region of interest (red circle in left image); red curve represents measured arterial input function; blue line corresponds to the last image considered for calculation (3 minutes) (right image). At 3 minutes, the washout phase has not been reached and K_{ep} value in this region of interest was $0.50 \text{ minutes}^{-1}$.