

Are your MRI contrast agents cost-effective?

Learn more about generic Gadolinium-Based Contrast Agents.



FRESENIUS  
KABI

caring for life

**AJNR**

**Wall Apposition Is a Key Factor for  
Aneurysm Occlusion after Flow Diversion: A  
Histologic Evaluation in 41 Rabbits**

A. Rouchaud, C. Ramana, W. Brinjikji, Y.-H. Ding, D. Dai,  
T. Gunderson, J. Cebral, D.F. Kallmes and R. Kadirvel

This information is current as  
of April 17, 2024.

*AJNR Am J Neuroradiol* 2016, 37 (11) 2087-2091

doi: <https://doi.org/10.3174/ajnr.A4848>

<http://www.ajnr.org/content/37/11/2087>

# Wall Apposition Is a Key Factor for Aneurysm Occlusion after Flow Diversion: A Histologic Evaluation in 41 Rabbits

A. Rouchaud, C. Ramana, W. Brinjikji, Y.-H. Ding, D. Dai, T. Gunderson, J. Cebral, D.F. Kallmes, and R. Kadirvel



## ABSTRACT

**BACKGROUND AND PURPOSE:** Robust wall apposition for flow-diverter stents may be important for endothelialization. Using a large series of experimental aneurysms treated with the Pipeline Embolization Device, the objectives of this study were to 1) assess interobserver agreement for the evaluation of wall apposition on posttreatment DSA and evaluate its association with aneurysm occlusion, and 2) measure the relationship between wall apposition assessed with histology and aneurysm occlusion rate after treatment.

**MATERIALS AND METHODS:** Saccular aneurysms were created in 41 rabbits and treated with the Pipeline Embolization Device. DSA was performed just after the deployment of the device and at follow-up. Three investigators independently graded wall apposition on posttreatment DSA as good or poor. A histopathologist blinded to the angiographic results graded the wall apposition on histologic samples. We examined the correlation between angiographic occlusion and wall apposition with histology and angiography.

**RESULTS:** Wall apposition evaluated on histology was strongly associated with saccular aneurysm occlusion. Sensitivity and specificity of wall apposition to predict complete occlusion at follow-up were 76.9% and 84.0%, respectively, with an overall accuracy of 81.6%. In this experimental study, DSA was suboptimal to assess flow-diverter apposition, with moderate interobserver agreement and low accuracy.

**CONCLUSIONS:** Good wall apposition is strongly associated with complete occlusion after flow-diverter therapy. In this study, DSA was suboptimal for assessing wall apposition of flow-diverter stents. These findings suggest that improved tools for assessing flow diverter-stent wall apposition are highly relevant.

**ABBREVIATIONS:** FDS = flow-diverter stent; PED = Pipeline Embolization Device

Flow-diverter stents (FDSs) are now largely accepted as the standard of care in the treatment of select aneurysms because of their high rates of angiographic occlusion and good clinical outcomes.<sup>1-3</sup> Because the mechanism of aneurysm occlusion after FDS treatment is likely related to stent endothelialization derived

exclusively from cells in the adjacent parent artery,<sup>4</sup> it appears important to have good wall apposition to promote endothelialization.<sup>5</sup> However, to our knowledge, correlation between aneurysm occlusion and wall apposition has not previously been evaluated in FDSs. Despite no evidence of this correlation, several tools are currently being evaluated to assess wall apposition of flow-diverter stents.<sup>6-8</sup>

Using a large series of elastase-induced aneurysms in rabbits treated with the Pipeline Embolization Device (PED; Covidien, Irvine, California), the objective of this study was to assess interobserver agreement for the evaluation of wall apposition on posttreatment DSA, evaluate its association with aneurysm occlusion, and measure the relationship between wall apposition assessed with histology and aneurysm occlusion rates after implantation.

## MATERIALS AND METHODS

### *In Vivo Experiments*

The Mayo Clinic Animal Care and Use Committee approved the animal procedures. Some rabbits used in this study were originally used in other investigations.<sup>9,10</sup> Elastase-induced aneurysms were created in 41 New Zealand white rabbits. Aneurysm creation

Received October 6, 2015; accepted after revision April 27, 2016.

From the Applied Neuroradiology Laboratory (A.R., C.R., W.B., Y.-H.D., D.D., D.F.K., R.K.) and Departments of Radiology (W.B., D.F.K.) and Health Sciences Research, Division of Biomedical Statistics and Informatics (T.G.), Mayo Clinic, Rochester, Minnesota; Interventional Neuroradiology NEURI Center (A.R.), Hôpital Bicêtre, Le Kremlin-Bicêtre, France; and Department of Bioengineering (J.C.), George Mason University, Fairfax, Virginia.

This work was supported by research grant NS0767491 from the National Institutes of Health and Medtronic. Aymeric Rouchaud was supported by research grants from the French Society of Radiology and Therese Planiol Foundation.

Please address correspondence to Aymeric Rouchaud, MD, Applied Neuroradiology Laboratory, Mayo Clinic, 200 First St SW, Rochester, MN 55905; e-mail: aymeric.rouchaud@gmail.com

Indicates open access to non-subscribers at [www.ajnr.org](http://www.ajnr.org)

Indicates article with supplemental on-line table.

Indicates article with supplemental on-line photos.

<http://dx.doi.org/10.3174/ajnr.A4848>

procedures were performed as previously described by our study group.<sup>11</sup> Aneurysms were treated at least 3 weeks after creation.<sup>12</sup> Subjects were premedicated with aspirin (10 mg/kg orally) and clopidogrel (10 mg/kg orally) 2 days before the treatment procedure; this medication regimen was continued for 1 month after embolization. The detailed procedure was previously published.<sup>9,10</sup> All endovascular procedures were performed with the Advantx DLX (GE Healthcare, Milwaukee, Wisconsin) Angio Suite equipped with an image amplifier. Imaging field of view was 11 cm with a frame rate of 2 frames per second, and the x-ray dose per frame was 500  $\mu$ R. The spatial resolution was 1.5 lines pairs per millimeter.

A 5F guide catheter (Envoy; Codman & Shurtleff, Raynham, Massachusetts) was briefly placed into the aortic arch, and DSA was performed. Heparin (500 U intravenously) was administered, and then a microcatheter (Marksman; Covidien) was placed over a microguidewire (Transend; Stryker, Kalamazoo, Michigan) into the subclavian artery distal to the aneurysm cavity. The wire was removed and the PED was advanced into the distal aspect of the microcatheter. The device was deployed across the neck of the aneurysm from the subclavian artery to the brachiocephalic trunk, with no protrusion of the proximal landing zone in the aortic arch. The microcatheter was removed, and DSA was performed through the guide catheter 5 minutes after deployment. No additional angioplasty to improve wall apposition or 3D acquisition were performed.

The implanted PED was selected according to the diameter of the artery. Details regarding proximal and distal diameters of the parent artery as well as the size of the implanted PEDs are available in the On-line Table.

Rabbits were humanely killed at day 30 ( $n = 18$ ), day 90 ( $n = 11$ ), and day 180 ( $n = 12$ ) after the procedure. At the time of death, the animals were deeply anesthetized. DSA of the aortic arch was performed to evaluate aneurysm occlusion. The animals then were euthanized with a lethal injection of pentobarbital. Aneurysm and parent artery tissue were immediately fixed in 10% neutral buffered formalin.

### Data Analysis

**Angiographic Evaluation.** A single experienced reader, blinded to wall-apposition status (DSA and histologic evaluations), assessed angiographic aneurysm occlusion at follow-up according to a 2-point classification: complete (100%) or incomplete occlusion.

Selected postprocess (pixel shift) images of the posttreatment DSA were independently examined by 3 investigators, blinded to histologic wall-apposition evaluation, to grade wall-apposition status on posttreatment DSA. Wall-apposition status on DSA was evaluated according to a dichotomous outcome, noted as either good or poor apposition depending on the presence or absence of visible contrast media between the stent and the parent artery. (Illustrative images for good and poor wall apposition are presented in On-line Figs 1 and 2).

**Histopathologic Processing and Wall-Apposition Evaluation.** A histopathologist blinded to the angiographic results did the processing and analysis for wall apposition as previously described.<sup>9</sup> After routine tissue processing, the fixed samples were embedded

in paraffin. Aneurysm samples were processed at 1000- $\mu$ m intervals in a sagittal orientation with use of an IsoMet Low Speed Saw (Buehler, Lake Bluff, Illinois). The metal stents were carefully removed under a dissecting microscope. The samples then were re-embedded in paraffin, sectioned at 5–6  $\mu$ m, and stained with hematoxylin-eosin.

Wall apposition was evaluated according to a dichotomous outcome, with either good or poor wall apposition of the stent. The evaluation was performed at the level of the aneurysm neck. A good histologic wall apposition meant that the stent was well apposed on the entire surface parent artery adjacent to the aneurysm ostium.

### Statistical Analysis

All statistical analyses were performed in R statistical and computing software version 3.1.1 (<http://www.r-project.org/>).  $\kappa$  and intraclass correlation coefficient statistics were calculated by using the irr package (version 0.84). Agreement among 3 readers for DSA assessment of posttreatment wall apposition was assessed by using the intraclass correlation coefficient method.<sup>13</sup> Cohen  $\kappa$  was also displayed for pair-wise comparisons of raters.  $\kappa$  also was used to assess agreement between the reference method of histology and DSA by using a consensus score agreed to by 2 radiologists for each method.

We calculated sensitivity, specificity, and accuracy of posttreatment DSA and histologic wall-apposition evaluations in predicting the occurrence of aneurysm occlusion at follow-up. The Wilson Score 95% CI is reported for each statistic. The Fisher exact test was performed to test for association between wall apposition assessed by histology at follow-up and occlusion outcome at follow-up.

## RESULTS

### Population and Angiographic Follow-Up Outcome

This study included 41 consecutively treated rabbits. All aneurysms were saccular. The mean aneurysm size was 9.41 mm (95% CI, 8.41–10.41) in the complete-occlusion group and 9.47 mm (95% CI, 8.03–10.91) in the incomplete-occlusion group. There was no significant difference in aneurysm sizes across groups ( $t$  test  $P$  value = .94). The length of follow-up varied from 30 days to 180 days, with a mean length of 90 days. Rabbits were euthanized at day 30 ( $n = 18$ ), day 90 ( $n = 11$ ), and day 180 ( $n = 12$ ).

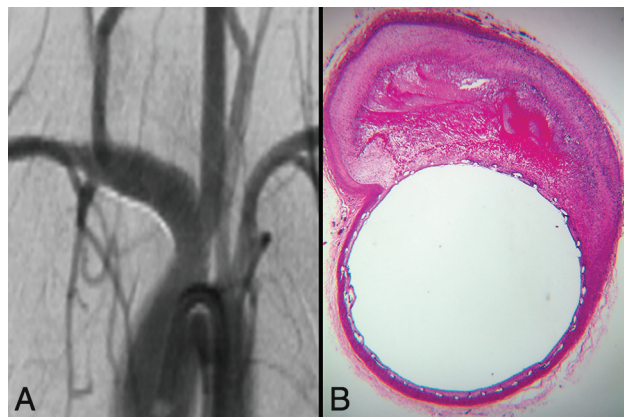
Follow-up DSA was available for 40 rabbits, of which 67.5% ( $n = 27$ ) had complete occlusion and 32.5% ( $n = 13$ ) had incomplete occlusion. Angiographic complete-occlusion rates at 30, 90, and 180 days were not statistically different at 52.9% ( $n = 9$ ), 72.7% ( $n = 8$ ), and 83.3% ( $n = 10$ ), respectively ( $\chi^2$   $P$  value = .25).

### Wall-Apposition Evaluation on Posttreatment DSA

Immediate posttreatment DSA was available for 41 rabbits. Wall-apposition status evaluated on posttreatment DSA by the 3 independent readers demonstrated a good wall-apposition rate of 61.0% ( $n = 75$  of 123 readings) and a poor wall-apposition rate of 39.0% ( $n = 48$ ). The consensus DSA evaluation yielded 63.4% ( $n = 26$ ) good wall apposition and 36.6% ( $n = 15$ ) poor wall apposition. All 3 readers rated similar proportions of wall appo-

**Table 1: Contingency table for wall-apposition assessment on posttreatment DSA**

Wall Apposition	Follow-up DSA Outcome		Total
	Complete Occlusion	Incomplete Occlusion	
Good	15	10	25
Poor	12	3	15
Total	27	13	40



**FIG 1.** Histology and DSA illustrative correlation of good wall apposition associated with complete aneurysm occlusion. A, Follow-up DSA objectively shows complete occlusion of the aneurysm sac. B, Photomicrograph (hematoxylin-eosin staining, original magnification  $\times 100$ ) at the level of the aneurysm neck shows perfect wall apposition with complete aneurysm pouch occlusion filled with conjunctive tissue when using the PED.

sition as poor ( $n = 16$ ; 39%). Pair-wise  $\kappa$  between the 3 readers for DSA was  $\kappa = 0.487, 0.590,$  and  $0.385$ . Intraclass correlation among readers was  $0.488$  (95% CI,  $0.30-0.66$ ), indicating moderate interobserver agreement.

#### **Correlation between Consensus DSA Wall Apposition and Follow-Up Occlusion**

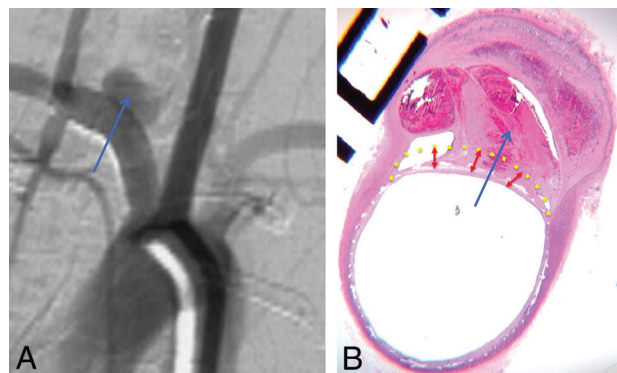
A contingency table is presented in Table 1. Sensitivity and specificity of good wall apposition evaluated on posttreatment DSA for the prediction of complete versus incomplete occlusion on follow-up DSA were 23.1% (95% CI,  $8.2-50.3$ ) and 55.5% (95% CI,  $37.3-72.4$ ), respectively. The overall accuracy of the wall apposition evaluated on posttreatment DSA for the prediction of complete versus incomplete occlusion at follow-up was 45.0% (95% CI,  $30.7-60.2$ ).

#### **Wall-Apposition Evaluation on Histology**

Histologic evaluation at time of follow-up DSA was available for 38 rabbits, of which 63.2% ( $n = 24$ ) had good wall apposition and 36.8% ( $n = 14$ ) had poor wall apposition.

#### **Correlation between Histologic Wall-Apposition Evaluation and Follow-Up Occlusion**

Illustrative histology images for good and poor wall apposition are presented in Fig 1 and Fig 2, respectively. A contingency table is presented in Table 2. Angiographic complete occlusion rates in good wall-apposition aneurysms of 77.8% (7 of 9) at 30 days, 100.0% (6 of 6) at 90 days, and 88.9% (8 of 9) at 180 days were not statistically different ( $\chi^2 P$  value = .44). Angiographic complete



**FIG 2.** Histology and DSA illustrative correlation of poor wall apposition associated with incomplete aneurysm occlusion. Follow-up DSA objectively shows incomplete occlusion of the aneurysm sac (blue arrow) (A). Photomicrograph at the level of the aneurysm neck (hematoxylin-eosin staining, original magnification  $\times 100$ ) shows poor wall apposition (yellow dotted line) and filling of the aneurysm pouch with a partial thrombosis in the aneurysm sac (B).

**Table 2: Contingency table for wall-apposition assessment on histology**

Wall Apposition	Follow-up DSA Outcome		Total
	Complete Occlusion	Incomplete Occlusion	
Good	21	3	24
Poor	4	10	14
Total	25	13	38

occlusion rates in poor wall-apposition aneurysms of 25.0% (2 of 8) at 30 days, 25.0% (1 of 4) at 90 days, and 50.0% (1 of 2) at 180 days were not statistically different ( $\chi^2 P$  value = .77).

Sensitivity and specificity of wall apposition evaluated on histology for the prediction of complete versus incomplete occlusion on follow-up DSA were 76.9% (95% CI,  $49.7-91.8$ ) and 84.0% (95% CI,  $65.3-93.6$ ), respectively. The overall accuracy of the wall apposition evaluated on posttreatment DSA for the prediction of complete versus incomplete occlusion at follow-up was 81.6% (95% CI,  $66.6-90.8$ ). Histologically assessed wall apposition was significantly associated with occlusion at follow-up DSA (Fisher exact test  $P$  value  $< .001$ ; odds ratio, 15.7; 95% CI,  $2.63-133.2$ ).

## **DISCUSSION**

Our study of a large series of experimental aneurysms demonstrated that wall apposition is a crucial determinant for saccular aneurysm occlusion after FDS treatment. Wall apposition on histology was strongly correlated with aneurysm occlusion after treatment of intracranial aneurysms with flow diverters, suggesting that if good wall apposition is not present, adjunctive measures such as balloon inflation should be considered in some clinical settings to improve apposition and, thus, aneurysm occlusion rates.

In addition, our study demonstrated that assessment of wall apposition on posttreatment DSA suffers from low interobserver agreement and is poorly predictive of final aneurysm occlusion status. We acknowledge that the DSA system used for this experimental study in rabbits is not optimal and that the results cannot be extrapolated with DSA used in the clinical angiography suite. Indeed, these findings strongly suggest that operators should con-



sider alternative methodologies for assessing wall apposition with high-resolution contrast-enhanced conebeam CT such as VasoCT (Philips Healthcare, Best, the Netherlands),<sup>14</sup> DynaCT (Siemens, Erlangen, Germany),<sup>15</sup> and Innova CT (GE Healthcare) or with intravascular optical coherence tomography.<sup>8</sup>

This study correlates flow-diverter wall apposition with saccular aneurysm occlusion by using histologic evaluation. This is of high importance because wall apposition can be considered a key factor for the occurrence of saccular aneurysm nonocclusion. A potential biologic mechanism that could explain lower occlusion rates in cases of poor wall apposition is the fact that aneurysm occlusion after flow-diverter stent treatment is not exclusively related to intra-aneurysmal thrombosis, but is also driven by endothelialization of the device.<sup>4</sup> This endothelialization is relatively delayed and, we believe, derived exclusively from cells in the adjacent parent artery.<sup>4</sup> Based on this proposed mechanism, the malapposed portion of the device will fail to endothelialize because of the lack of direct contact with the parent artery in cases of poor wall apposition. This mechanism has also been discussed in the coronary intervention literature, and coronary stents that lack wall apposition fail to endothelialize.<sup>5,16</sup> Though our study proves that wall apposition is highly correlated with angiographic outcome, we also found that DSA was a suboptimal tool in assessing wall apposition.

Our current results are in accordance with the clinical study published by Saake et al,<sup>6</sup> who, in a study with 14 patients and evaluations made in consensus by 2 experienced neuroradiologists, reported that wall apposition was difficult to assess on intrarterial DSA. In their study, they did not find any significant difference between DSA and intravenous angiographic CT related to the deployment of the FDS, wall apposition of the stent in the nonaneurysmal parent vessel segments, and the aneurysmal neck coverage by the stent, but the reviewers preferred intravenous angiographic CT for evaluation of wall apposition. Beyond the fact that the angiography suite used in this experimental study is not optimal and differs from clinical ones, there are some explanations for why 2D DSA might be suboptimal in assessing wall apposition. 2D DSA cannot provide cross-sectional images; thus, there are limited views examining the relationship between the FDS and the vessel wall. In addition, DSA imaging acquisition is based on mask subtraction, making assessment of any contrast opacification between the subtracted device itself and the arterial wall quite difficult. Furthermore, there was motion artifact in our study because the experimental aneurysms are not located in the brain, but in the thorax, and are subject to ventilation movements.

Newer tools are currently being evaluated in the setting of FDS treatment of intracranial aneurysms to assess wall apposition. Flat panel CT with intra-arterial or intravenous opacification has a very high spatial resolution and can be done directly on the DSA table without any additional invasive procedure and with low radiation.<sup>6,7,17-22</sup> More recently, optical coherence tomography has been evaluated for intracranial procedures.<sup>8,23-27</sup> In addition, other endovascular techniques that are primarily used in cardiology but not yet used in neuroradiology, such as intravascular sonography<sup>24</sup> or endoluminal optical imaging (angioscopy),<sup>28</sup> seem promising in the assessment of wall apposition. Our study

suggests that these tools could someday be preferred over DSA for the assessment of wall apposition.

In cases of poor wall apposition demonstrated on postdeployment imaging, it could be useful to improve apposition with balloon expansion. Another option is the development of flow-diverter stents with higher radial force and conformability, which are key factors, for better wall apposition.<sup>29</sup> However, radial force is usually low in braided devices. We surmise that new flow-diverter devices with a laser-cut scaffold and a high mesh attenuation construct on the outer diameter could give higher radial force and better wall apposition.<sup>30</sup>

### Limitations

Our study is limited by its retrospective nature and the use of only selected images for the DSA readers' assessment. In addition, it is possible that a newer-generation angiography suite could provide better DSA images; 3D runs with multiplanar reconstructions might be better than 2D DSA to assess wall apposition, but we did not perform these acquisitions. Another limitation to our study is the motion artifact associated with the respiratory and cardiac motion in these rabbit aneurysms. However, it is important to point out that all images underwent postprocessing, including pixel shifting by an experienced radiologist before assessment by the blinded readers. Another limitation of this study is that only 1 experienced reader evaluated the histologic samples. However, this reader was blinded to the DSA outcomes. Regarding the choice of the appropriate device, sizing was sometimes difficult because of discrepancies in the artery diameter between the proximal and distal parts, but the braided stents have the ability to expand beyond their labeled diameter.

We did not use a previously published classification for wall-apposition assessment because we mainly focused at the level of the aneurysm neck, whereas the available classifications discussed the device deployment in the parent artery and not specifically at the neck.<sup>6</sup> Another limitation of this study is that rabbits were killed at different time points, which can modify the outcomes after implantation of the PED depending on the length of follow-up. However, we did not observe any statistically significant impact of time on complete occlusion rates. Also, this study focused on wall apposition as a key factor influencing aneurysm occlusion after flow diversion, but some other criteria that have not been analyzed in this specific study are also of high importance, such as hemodynamic effects, intra-aneurysmal thrombosis, and mesh attenuation.

### CONCLUSIONS

This study highlights that good wall apposition is key in obtaining complete occlusion of saccular aneurysms after FDS treatment. In this study, 2D DSA was found suboptimal for assessing wall apposition of FDSs, with only moderate interobserver agreement and low accuracy. Our inability to perform high-frame rate DSAs and C-arm CT acquisitions to evaluate wall apposition must be considered when assessing the significance of these results. Our study suggests that development of new tools for the assessment of wall apposition for flow-diverter stents is needed to improve angiographic outcomes in patients treated with FDSs.

Disclosures: Juan Cebra—RELATED: Grant: National Institutes of Health, Comments: research grant\*; UNRELATED: Grants/Grants Pending: National Institutes of Health,\* Philips,\* Comments: research grants. David F. Kallmes—UNRELATED: Board Membership: GE Healthcare,\* Comments: cost-effectiveness board; Consultancy: ev3/Covidien/Medtronic,\* Comments: planning and implementing clinical trials, clinical events committee, and steering committee; Grants/Grants Pending: Microvention,\* Sequent,\* Neurosigma,\* Surmodics,\* Codman,\* ev3/Covidien/Medtronic,\* Comments: preclinical research, clinical trials, and supply of devices; Travel/Accommodations/Meeting Expenses Unrelated to Activities Listed: ev3/Covidien/Medtronic,\* Comments: presentation at FDA panel meeting. Ramanathan Kadirvel—RELATED: Grant: National Institutes of Health. \*Money paid to the institution.

## REFERENCES

- Arrese I, Sarabia R, Pintado R, et al. **Flow-diverter devices for intracranial aneurysms: systematic review and meta-analysis.** *Neurosurgery* 2013;73:193–99; discussion 199–200 CrossRef Medline
- Brinjikji W, Murad MH, Lanzino G, et al. **Endovascular treatment of intracranial aneurysms with flow diverters: a meta-analysis.** *Stroke* 2013;44:442–47 CrossRef Medline
- Wakhloo AK, Gounis MJ. **Revolution in aneurysm treatment: flow diversion to cure aneurysms: a paradigm shift.** *Neurosurgery* 2014;61 Suppl 1:111–20 CrossRef Medline
- Kadirvel R, Ding YH, Dai D, et al. **Cellular mechanisms of aneurysm occlusion after treatment with a flow diverter.** *Radiology* 2014;270:394–99 CrossRef Medline
- Foin N, Gutiérrez-Chico JL, Nakatani S, et al. **Incomplete stent apposition causes high shear flow disturbances and delay in neointimal coverage as a function of strut to wall detachment distance: implications for the management of incomplete stent apposition.** *Circ Cardiovasc Interv* 2014;7:180–89 CrossRef Medline
- Saake M, Struffert T, Goelitz P, et al. **Angiographic CT with intravenous contrast agent application for monitoring of intracranial flow diverting stents.** *Neuroradiology* 2012;54:727–35 CrossRef Medline
- Ding D, Starke RM, Durst CR, et al. **DynaCT imaging for intraprocedural evaluation of flow-diverting stent apposition during endovascular treatment of intracranial aneurysms.** *J Clin Neurosci* 2014;21:1981–83 CrossRef Medline
- van der Marel K, Gounis MJ, Weaver JP, et al. **Grading of Regional Apposition after Flow-Diverter Treatment (GRAFT): a comparative evaluation of VasoCT and intravascular OCT.** *J Neurointerv Surg* 2015 Jul 28. [Epub ahead of print] CrossRef Medline
- Kallmes DF, Ding YH, Dai D, et al. **A new endoluminal, flow-disrupting device for treatment of saccular aneurysms.** *Stroke* 2007;38:2346–52 CrossRef Medline
- Kallmes DF, Ding YH, Dai D, et al. **A second-generation, endoluminal, flow-disrupting device for treatment of saccular aneurysms.** *AJNR Am J Neuroradiol* 2009;30:1153–58 CrossRef Medline
- Altes TA, Cloft HJ, Short JG, et al. **1999 ARRS Executive Council Award. Creation of saccular aneurysms in the rabbit: a model suitable for testing endovascular devices.** *American Roentgen Ray Society. AJR Am J Roentgenol* 2000;174:349–54 CrossRef Medline
- Fujiwara NH, Cloft HJ, Marx WF, et al. **Serial angiography in an elastase-induced aneurysm model in rabbits: evidence for progressive aneurysm enlargement after creation.** *AJNR Am J Neuroradiol* 2001;22:698–703 Medline
- Shrout PE, Fleiss JL. **Intraclass correlations: uses in assessing rater reliability.** *Psychol Bull* 1979;86:420–28 CrossRef Medline
- Kizilkilic O, Kocer N, Metaxas GE, et al. **Utility of VasoCT in the treatment of intracranial aneurysm with flow-diverter stents.** *J Neurosurg* 2012;117:45–49 CrossRef Medline
- Faragó G, Caldiera V, Tempura G, et al. **Advanced digital subtraction angiography and MR fusion imaging protocol applied to accurate placement of flow diverter device.** *J Neurointerv Surg* 2016;8:e5 CrossRef Medline
- Attizzani GF, Capodanno D, Ohno Y, et al. **Mechanisms, pathophysiology, and clinical aspects of incomplete stent apposition.** *J Am Coll Cardiol* 2014;63:1355–67 CrossRef Medline
- Aurboonyawat T, Schmidt PJ, Piotin M, et al. **A study of the first-generation Pipeline embolization device morphology using intraoperative angiographic computed tomography (ACT).** *Neuroradiology* 2011;53:23–30 CrossRef Medline
- Clarencon F, Piotin M, Pistocchi S, et al. **Evaluation of stent visibility by flat panel detector CT in patients treated for intracranial aneurysms.** *Neuroradiology* 2012;54:1121–25 CrossRef Medline
- Patel NV, Gounis MJ, Wakhloo AK, et al. **Contrast-enhanced angiographic cone-beam CT of cerebrovascular stents: experimental optimization and clinical application.** *AJNR Am J Neuroradiol* 2011;32:137–44 CrossRef Medline
- Jou LD, Mitchell BD, Shaltoni HM, et al. **Effect of structural remodeling (retraction and recoil) of the Pipeline embolization device on aneurysm occlusion rate.** *AJNR Am J Neuroradiol* 2014;35:1772–78 CrossRef Medline
- Caroff J, Mihalea C, Neki H, et al. **Role of C-arm VasoCT in the use of endovascular WEB flow disruption in intracranial aneurysm treatment.** *AJNR Am J Neuroradiol* 2014;35:1353–57 CrossRef Medline
- Poncyłjusz W, Biliński P, Safranow K, et al. **The LVIS/LVIS Jr. stents in the treatment of wide-neck intracranial aneurysms: multicentre registry.** *J Neurointerv Surg* 2015;7:524–29 CrossRef Medline
- Hayat U, Thondapu V, Asrar UI Haq M, et al. **Optical coherence tomography to evaluate coronary stent implantation and complications.** *Coron Artery Dis* 2015;26 Suppl 1:e55–68 CrossRef Medline
- Amoroso G, van Geuns RJ, Spaulding C, et al. **Assessment of the safety and performance of the STENTYS self-expanding coronary stent in acute myocardial infarction: results from the APPOSITION I study.** *EuroIntervention* 2011;7:428–36 CrossRef Medline
- Radu M, Jorgensen E, Kelbaek H, et al. **Strut apposition after coronary stent implantation visualised with optical coherence tomography.** *EuroIntervention* 2010;6:86–93 CrossRef Medline
- Ozaki Y, Okumura M, Ismail TF, et al. **The fate of incomplete stent apposition with drug-eluting stents: an optical coherence tomography-based natural history study.** *Eur Heart J* 2010;31:1470–76 CrossRef Medline
- Sawada T, Shite J, Negi N, et al. **Factors that influence measurements and accurate evaluation of stent apposition by optical coherence tomography. Assessment using a phantom model.** *Circ J* 2009;73:1841–47 CrossRef Medline
- McVeigh PZ, Sacho R, Weersink RA, et al. **High-resolution angioscopic imaging during endovascular neurosurgery.** *Neurosurgery* 2014;75:171–80; discussion 179–80 CrossRef Medline
- Kalmár G, Hübner F, Voelker W, et al. **Radial force and wall apposition of balloon-expandable vascular stents in eccentric stenoses: an in vitro evaluation in a curved vessel model.** *J Vasc Interv Radiol* 2002;13:499–508 CrossRef Medline
- Möhlenbruch MA, Herweh C, Jestaedt L, et al. **The FRED flow-diverter stent for intracranial aneurysms: clinical study to assess safety and efficacy.** *AJNR Am J Neuroradiol* 2015;36:1155–61 CrossRef Medline