

The **next generation** GBCA  
from Guerbet is here

Explore new possibilities >

Guerbet | 

© Guerbet 2024 GUOB220151-A

# AJNR

## False-negative Diffusion-weighted MR Findings in Acute Ischemic Stroke

Catherine Oppenheim, Ruxandra Stanescu, Didier Dormont, Sophie Crozier, Béatrice Marro, Yves Samson, Gérald Rancurel and Claude Marsault

This information is current as  
of March 20, 2024.

*AJNR Am J Neuroradiol* 2000, 21 (8) 1434-1440  
<http://www.ajnr.org/content/21/8/1434>

## False-negative Diffusion-weighted MR Findings in Acute Ischemic Stroke

Catherine Oppenheim, Ruxandra Stanescu, Didier Dormont, Sophie Crozier, Béatrice Marro, Yves Samson, Gérald Rancurel, and Claude Marsault

**BACKGROUND AND PURPOSE:** Lesions associated with acute stroke are often missed by diffusion-weighted imaging (DWI), suggesting that the sensitivity of this technique for detecting acute ischemic stroke may not be as high as initially thought. Our aim was to estimate the rate of false-negative DWI studies in patients with persistent neurologic deficit due to an ischemic stroke and to identify which stroke lesions are most likely to be missed by DWI.

**METHODS:** We reviewed MR images obtained within 48 hours after stroke onset in 139 patients admitted for symptoms consistent with ischemic stroke in whom the deficit lasted more than 24 hours. Cases of negative initial DWI findings with an ischemic lesion visible on follow-up MR studies and a final diagnosis of arterial ischemic stroke were analyzed in terms of delay between onset of symptoms and initial DWI (MR latency), size and vascular distribution of the lesions, and relationship to findings in patients with positive initial DWI results.

**RESULTS:** We found eight cases (5.8%) of false-negative initial DWI studies, of which four were positive on initial fluid-attenuated inversion recovery (FLAIR) imaging. Follow-up FLAIR/DWI showed a hyperintensity matching clinical presentation in all eight patients. The mean size of the lesion was  $0.19 \pm 0.16 \text{ cm}^3$ . False-negative studies occurred more often in cases of stroke in the posterior (19%) than in the anterior (2%) circulation or when DWI was obtained within 24 hours after symptom onset. Of the six false-negative vertebrobasilar stroke lesions, five were located in the brain stem. In all, 31% of patients with vertebrobasilar ischemic stroke had a false-negative initial DWI study during the first 24 hours.

**CONCLUSION:** A false-negative DWI study is not uncommon during the first 24 hours of ischemic stroke. Vertebrobasilar stroke should therefore not be ruled out on the basis of early negative DWI, especially when symptoms persist and are suggestive of this diagnosis.

During the last few years, diffusion-weighted MR imaging (DWI) has been shown to be an excellent tool for the detection of acute stroke (1–8), although its sensitivity in this regard would appear to have limitations, as witnessed by an increasing number of reports of false-negative cases (1, 4, 5–8). The rate of negative DWI studies in patients with acute ischemic stroke is highly variable, however, ranging from 0% (2) to 21% (1, 4, 8, 9), notwithstanding that the stroke lesions in these studies

were not always confirmed radiologically. In light of these findings, the reliability of negative DWI studies for excluding ischemic stroke seems questionable. This is a clinically relevant problem, since DWI is routinely used for diagnostic purposes and is now proposed for guiding aggressive therapy during the first few hours after the onset of neurologic symptoms (2, 10, 11).

In our stroke center, DWI is used as a first-line diagnostic tool for patients with sudden onset of neurologic symptoms who are admitted for a suspected ischemic event within 48 hours of onset. In this study, our aim was to estimate the rate of false-negative DWI studies in patients with persistent neurologic deficit due to an ischemic stroke and to identify which stroke lesions were most likely to be missed by DWI.

### Methods

From the overall population who underwent DWI studies for a suspected stroke at our center between January 1998 and August 1999, we retrospectively selected those who met the

---

Received November 29, 1999; accepted after revision February 21, 2000.

B.M., C.M.) and Cerebrovascular Emergency (S.C., Y.S., G.R.), Groupe Hospitalier Pitié-Salpêtrière, Paris VI University, Paris, France.

Supported in part by a research grant (P980101, CRC 97120) from Assistance Publique Hôpitaux de Paris.

Address reprint requests to Catherine Oppenheim, MD, Department of Neuroradiology, Groupe Hospitalier Pitié-Salpêtrière, Paris VI University, 47 Boulevard de l'Hôpital, 75651 Paris, Cedex 13, France.

following criteria: patients who were admitted to the stroke center with signs and symptoms highly suggestive of arterial ischemic stroke in whom the onset time could be determined, in whom DWI was performed within 48 hours after symptom onset, and in whom neurologic symptoms were still present 24 hours after onset. One hundred thirty-nine patients fulfilled these criteria.

Before MR imaging, all patients underwent an emergency clinical evaluation by a stroke neurologist and had an unenhanced CT scan to exclude intracranial hemorrhage. All initial MR examinations were performed immediately after admission on a 1.5-T MR unit and included two sequences: a fast-FLAIR sequence with 4 minutes imaging time, 5-mm axial interleaved slices,  $256 \times 256$  matrix,  $24 \times 24$ -cm field of view, 10002/148 TR/TE<sub>eff</sub>, 2200 inversion time (TI), and 32 kHz bandwidth, and a DWI sequence. For the latter, the first 50 patients were studied with an "experimental" multislice single-shot spin-echo diffusion echo-planar sequence with a pair of diffusion gradients centered on the  $180^\circ$  pulse with 6-mm axial slice thickness, 1.5-mm gap,  $96 \times 64$  matrix,  $28 \times 21$ -cm field of view, and 4000/120 TR/TE<sub>eff</sub>. Five sets of 17 slices were acquired with five  $b$  values ( $\delta = 25$  ms,  $\Delta = 28$  ms), starting from  $b = 0$  s/mm<sup>2</sup> up to 800 s/mm<sup>2</sup>, with diffusion gradients applied simultaneously in three orthogonal spatial directions. For the remaining 89 patients, the DWI sequence was modified as follows: spin-echo multislice single-shot echo-planar imaging sequences with a pair of diffusion gradients centered on the  $180^\circ$  pulse with 6-mm axial slice thickness, 1.5-mm gap,  $96 \times 64$  matrix,  $28 \times 21$ -cm field of view, and 2825/92.6 TR/TE<sub>eff</sub>. Sixteen slices were acquired with a baseline T2 acquisition ( $b = 0$  s/mm<sup>2</sup>) and a  $b = 1000$  s/mm<sup>2</sup> (diffusion gradient  $G = 22$  mT/m, active during 31 ms). The diffusion gradients were successively and separately set in the three orthogonal directions for a total DWI acquisition time of 11 seconds to cover the whole brain. Trace images were then generated and apparent diffusion coefficient (ADC) maps calculated with a dedicated software program (Functool, General Electric, Buc, France).

Initial MR imaging was performed within 48 hours after stroke onset in all patients and within 24 hours in 93 patients. In each case, the final diagnosis was made by a stroke neurologist, who reviewed all available clinical data, paraclinical studies, including etiologic cardiac and arterial work-up, and radiologic follow-up. All initial MR images were reviewed retrospectively by a neuroradiologist who was aware of the acute neurologic symptoms but blinded to the clinical and imaging follow-up. Initial DWI was considered positive for the diagnosis of recent arterial stroke whenever hyperintensities with reduced ADC values were observed in clinically relevant brain regions. Because ADC maps may not be reliable in small lesions, ADC values were not taken into account for lesions smaller than 5 mm. The result of this review was compared with the report made at the time of initial MR imaging. In case of discrepancy, a second neuroradiologist was asked to determine whether an acute stroke lesion was visible on DWI. In patients with negative initial MR findings, a follow-up MR study, including FLAIR and DWI, was systematically performed before hospital discharge. All patients with normal initial and follow-up MR imaging had a clinical examination at 3 months to confirm the diagnosis made at hospital discharge.

Among the 139 patients in our study group, the final diagnosis was arterial ischemic stroke in 130 (94%). Stroke lesions were located in the anterior circulation in 99 patients (69 imaged within 24 hours) and in the posterior circulation in 31 patients (19 imaged within 24 hours). The remaining nine patients had a final diagnosis other than arterial stroke: two cases each of aura migrainous and nonorganic deficit and one case each of venous stroke, multiple sclerosis, postictal deficit, toxic encephalitis, and peripheral vertigo.

False-negative initial DWI studies corresponded to normal initial DWI findings, a stroke lesion clearly visible on follow-

up MR studies, and a final diagnosis of arterial stroke. Clinical data, lesion size, findings on FLAIR images, delay between onset of symptoms and initial MR (MR latency), and vascular distribution (ie, anterior or posterior circulation) of the stroke lesions in patients with false-negative DWI findings were analyzed. The statistical analysis compared the patients who had a false-negative initial DWI with those who had a positive initial DWI in terms of MR latency and vascular distribution. The  $\chi^2$ -test was used to study these two variables. The influence of MR latency on the probability of false-negative DWI findings was further analyzed for lesions located in the anterior or posterior circulation using logistic regression (GNU Octave software, Eaton et al, University of Wisconsin): the probability of false-negative DWI was graphically plotted against time (from initial onset to MR imaging) for lesions located in the anterior circulation and for those of the posterior circulation separately. The true-positive and false-negative DWI lesions in patients with vertebrobasilar stroke imaged within 24 hours were compared in terms of spatial distribution and size using the Fisher's exact or Mann-Whitney U-test. For all statistical analyses, a difference was considered significant at  $P < .05$ . All calculations were expressed as mean  $\pm$  SD. Lesion size was estimated from follow-up FLAIR images. The abnormality was manually outlined on each image using an image analysis package (Functool). The area of abnormality on each section was multiplied by the section thickness (5 mm, no gap) to obtain a volume.

## Results

Of the 139 patients in our study group, eight (5.8%) presented with a sudden acute neurologic deficit and had a negative initial DWI study but a final diagnosis of arterial stroke on the basis of follow-up MR imaging findings and clinical data. The Table 1 summarizes the demographic data, stroke risk factors, neurologic onset, and radiologic findings in these eight patients, who included seven men and one woman with a mean age of 58 years (range, 44–74 years).

Initial MR imaging, including DWI and FLAIR, was performed between 30 minutes and 22 hours (mean,  $8.8 \pm 8.5$  hours) after the acute onset of clinical symptoms. Two of the eight patients with false-negative initial DWI findings were studied with the experimental DWI pulse sequence and have been reported previously (6). There was no statistical difference in the false-negative rate between the patients imaged with the experimental DWI sequence (two of 50 patients) and those imaged with the modified DWI sequence (six of 89 patients, Fisher's exact test:  $P = .7$ ). Of the eight patients with false-negative initial DWI findings, four (cases 1, 2, 4, and 6) had concomitant FLAIR images showing a focal hyperintensity in clinically relevant brain regions (Table).

Follow-up MR examinations were performed between 8 hours and 7 days (mean,  $88 \pm 59$  hours) after clinical onset in these eight patients. Follow-up MR imaging revealed a clear-cut hyperintensity in all eight patients on both FLAIR and DWI studies (Figs 1–3). In the four patients with negative initial DWI but positive FLAIR studies, the hyperintensity on follow-up DWI matched the location of the initial FLAIR abnormalities (Figs 1 and 2). The mean lesion size was  $0.19 \pm 0.16$  cm<sup>3</sup>. Lesions

**Findings in eight patients with sudden acute neurologic deficit and negative initial findings on diffusion-weighted MR imaging study**

Case No.	Age (y)/Sex	Stroke Risk Factor	NIHSS Score at Admission	Rankin Score at Hospital Discharge*	Symptoms	Initial MR Findings			Follow-up MR Findings			
						MR Latency (hr)	FLAIR	DWI	MR Latency (hr)	FLAIR	DWI	Lesion Size
1	57/M	Diabetes mellitus/hypertension	1	1	Sudden L cerebellar syndrome	7	Hyperintense signal of R pons	Normal	120	Hypersignal of R pons	Hyperintense signal of R pons	0.08 cm <sup>3</sup>
2	44/M	Hypertension	1	1	Sudden R hemiparesis and facial palsy	5	Cortical hyperintense signal of L central gyrus	Normal	96	Hypersignal of L central gyrus	Hyperintense signal of L central gyrus	0.15 cm <sup>3</sup>
3	58/M	Fusiform aneurysm of basilar artery	12	5	Sudden L hemiplegia 3 days after occlusion of R vertebral artery	0.5	Normal	Normal	8	Hypersignal of R pons	Hyperintense signal of R pons	0.32 cm <sup>3</sup>
4	74/M	Hyperlipidemia/smoking	1	1	Sudden L paresthesia	7	Hyperintense signal of R subthalamic area	Normal	48	Hyperintense signal of R subthalamic area	Small hyperintense signal of R thalamus	0.05 cm <sup>3</sup>
5	70/M	Hypertension/diabetes mellitus/atrial fibrillation	7	3	Sudden dizziness, dysarthria, and L cerebellar syndrome with hemiparesis	22	Normal	Normal	168	Hypersignal of R pons	Hyperintense signal of R pons	0.07 cm <sup>3</sup>
6	61/M	Heart attack	1	1	Sudden R crural hemiparesis	22	Small cortical hyperintense signal in L paracentral lobule	Normal	108	Small hypersignal of L paracentral lobule	Small hyperintense signal of L paracentral lobule	0.05 cm <sup>3</sup>
7	45/M	Dolichobasilar artery	2	1	Sudden onset of vertigo dysmetria and somnolence	5.5	Normal	Normal	15	L pons lacuna	L pons lacuna	0.28 cm <sup>3</sup>
8	71/F	Recent L MCA stroke (NIHSS = 5)	7	3	Bilateral hand paresthesia, dysarthria, and somnolence immediately after arteriography	1.5	Normal	Normal	144	L brain stem lacuna	L brain stem lacuna	0.5 cm <sup>3</sup>

Note.—NIHSS indicates National Institutes of Health Stroke Scale; FLAIR, fast fluid-attenuated inversion recovery; DWI, diffusion-weighted imaging; MCA, middle cerebral artery.

\* Or at 1 month in case of long hospital stay.



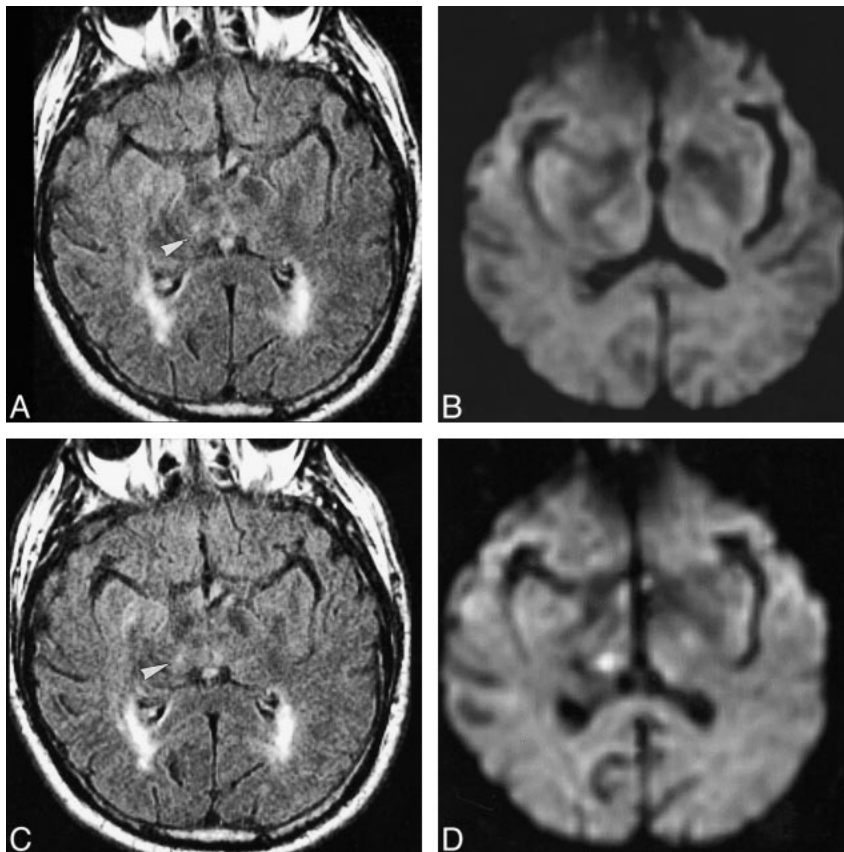


FIG 1. Case 4: 74-year-old man with sudden left paresthesia.

A–D, Seven hours after the onset of symptoms, FLAIR image (10002/148/1,  $T1 = 2200$ ) (A) shows multiple diffuse areas of periventricular hyperintensity with a small hyperintensity in the right subthalamic area (arrowhead, A and C), whereas DWI (2825/92.6/1) (B) is considered normal. Forty-eight hours after symptom onset, FLAIR image remains unchanged (C) while DWI shows a clear hyperintensity in the right subthalamic area (D), matching clinical presentation.

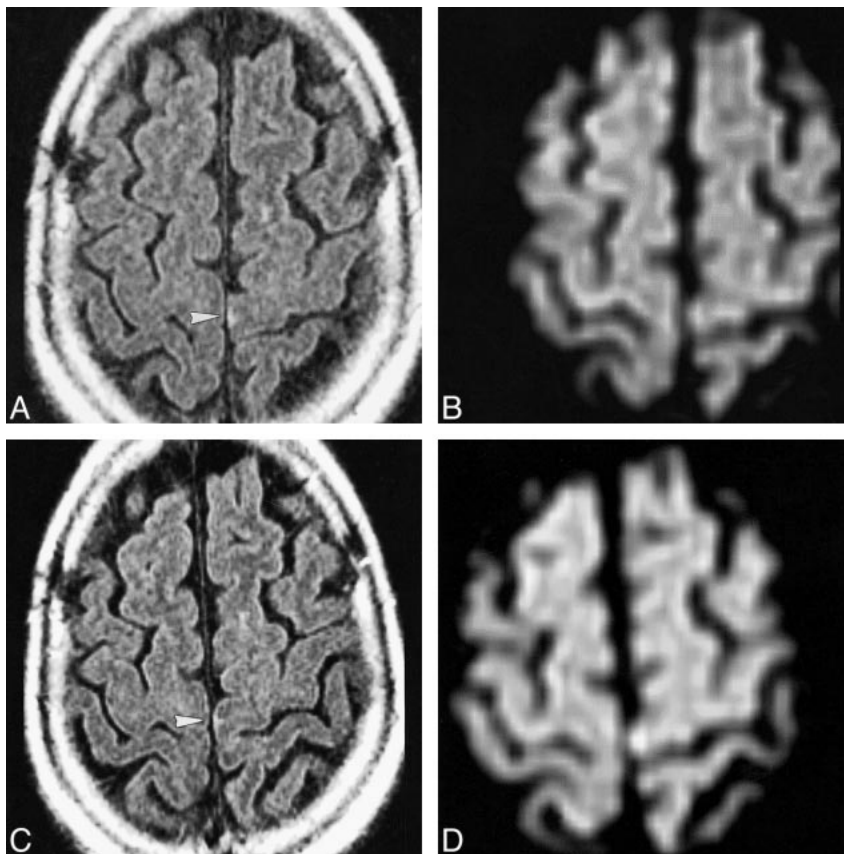
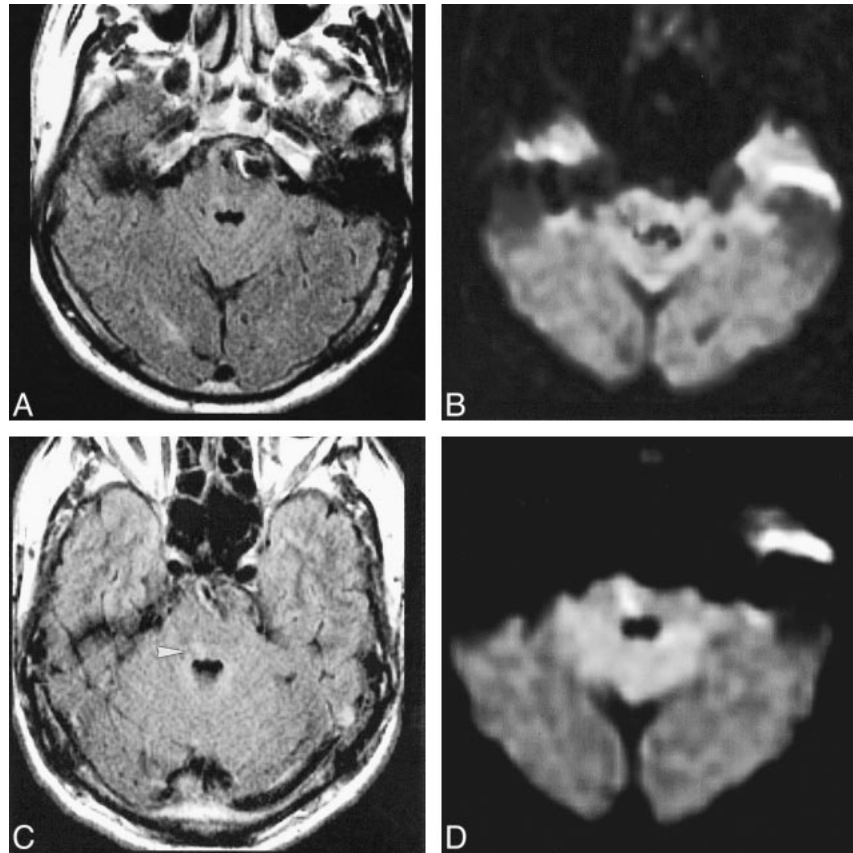


FIG 2. Case 6: 61-year-old man with sudden right crural hemiparesis.

A–D, Twenty-two hours after onset of symptoms, FLAIR image (10002/148/1,  $T1 = 2200$ ) (A) shows a small cortical hyperintensity in the left paracentral lobule (arrowhead, A and C), whereas DWI (2825/92.6/1) (B) fails to show a stroke lesion. Four days later, the lesion is still visible on FLAIR image (C), and DWI (D) displays a hyperintensity in the paracentral lobule, consistent with a recent stroke lesion and matching clinical presentation.

FIG 3. Case 7: 45-year-old man with sudden onset of vertigo, dysmetria, and somnolence.

A–D, On initial MR examination, performed 5.5 hours after onset, MR angiogram (not shown) displayed a partially thrombosed dolichobasilar artery, which was responsible for the mass effect on the brain stem and heterogeneous signal anterior to the pons on FLAIR images. Initial FLAIR image (A) (10002/148/1, TI = 2200) and DWI (B) fail to reveal a stroke lesion. On follow-up MR examination, performed 15 hours after onset, FLAIR image shows a small right-sided brain stem hyperintensity (arrowhead) (C), which is more clearly visible on DWI (D).



were located in the posterior circulation in six patients (five in the brain stem and one in the subthalamic area) and in the anterior circulation in the other two patients (one in the middle cerebral artery and one in the anterior cerebral artery). Of the 31 patients with vertebrobasilar stroke, six (19%) had a false-negative initial DWI study. When only the 19 patients imaged within 24 hours after stroke onset were considered, six (31%) with a vertebrobasilar stroke had a false-negative initial DWI study. In contrast, the two patients with a false-negative initial DWI study who had a stroke lesion in the anterior circulation accounted for only 2% of the 99 patients with a definite anterior stroke lesion. No false-negative initial DWI study was observed in patients imaged after 24 hours.

Statistical analysis confirmed that false-negative initial DWI findings occurred more frequently when the stroke lesion was located in the vertebrobasilar territory ( $\chi^2 = 12.3$ ,  $P = .0004$ , 1 *df*), and when imaging was performed within 24 hours after symptom onset ( $\chi^2 = 4.07$ ,  $P = .04$ , 1 *df*). The results of the logistic regression analysis within each vascular topography subgroup are presented in Figure 4. This analysis showed that the occurrence of false-negative DWI findings decreased significantly when MR latency increased ( $\theta = 0.438$ ,  $\beta = 0.127$ ,  $P = .04$ ) for vertebrobasilar stroke lesions. This link was no longer significant when lesions were located in the anterior circulation ( $\theta = -3.6$ ,  $\beta = 0.018$ ,  $P > .05$ ). Among the 19 patients

Probability of false negative DWI

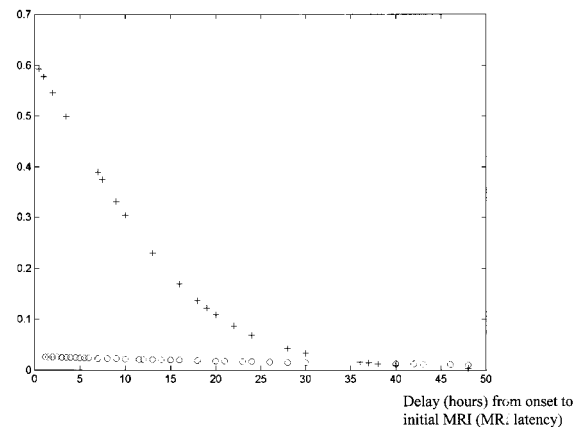


FIG 4. Estimation of the probability of false-negative DWI findings by means of a logistic regression. The probability of false-negative DWI findings is plotted against time for stroke lesions located in the anterior (circles) and posterior (crosses) circulation. For vertebrobasilar stroke lesions (crosses), the probability of false-negative DWI findings diminishes when MR latency increases ( $\theta = 0.438$ ,  $\beta = 0.127$ ,  $P = .04$ ). For lesions located in the anterior circulation (circles), this relation is no longer significant.

with a vertebrobasilar stroke imaged within 24 hours after onset, false-negative DWI lesions were significantly smaller (final volume: median, 0.18  $\text{cm}^3$ ; range, 0.05–0.5  $\text{cm}^3$ ) than true-positive DWI lesions (final volume: median, 0.6  $\text{cm}^3$ ; range, 0.2–

23 cm<sup>3</sup>) by Mann Whitney U-test ( $P = .04$ ). Moreover, false-negative DWI lesions were located significantly more often in the brain stem (five of the six vertebrobasilar stroke lesions) than were the true-positive DWI lesions (three of the 10 vertebrobasilar stroke lesions) by Fisher's exact test ( $P = .04$ ).

### Discussion

Although it has been documented that DWI is highly sensitive for the diagnosis of acute ischemic stroke, there is increasing evidence that it may fail to detect acute stroke lesions (1, 4–6, 7–9). Our results emphasize the fact that false-negative DWI findings in acute stroke are not rare events. However, a controversy exists, as the rate of negative DWI studies in acute stroke varies among studies, ranging from 0% (2) to 21% (1, 4, 8, 9). A large proportion of the reported negative DWI studies occurred in patients with transient ischemic attack (TIA); that is, a neurologic deficit resolving completely within 24 hours. Indeed, TIA accounted for 40% of false-negative DWI findings reported by Lövblad et al (4), for 18% in the study by Ay et al (1), and for all the cases reported in the study by Lutsep et al (5). This is in agreement with the observation that DWI findings are often negative in patients with short-lasting TIA, and remain negative on follow-up studies (12).

Our aim was to identify which stroke lesions were most likely to be missed by DWI. Since clinical and extensive paraclinical examinations are often insufficient to reliably discriminate between TIA and other causes of reversible neurologic deficit, we excluded all patients with a deficit resolving within 24 hours and focused our attention on patients with a signature of stroke on follow-up MR examinations. Similarly, Ay et al (1) selected patients for whom “the deficit was still present at the time of MR imaging” and thus excluded most cases of short-lasting TIA.

Two large studies reported false-negative DWI findings in the acute phase of ischemic stroke lesions (1, 4). Apart from TIA, Ay et al (1) reported 12 patients with false-negative DWI studies in whom the best final diagnosis was a cerebral ischemic event. Of these, only half had definite stroke lesions on follow-up MR images. Lövblad et al (4) reported 18 patients with false-negative DWI findings. In their study, the final diagnosis of stroke was based on clinical data and, except for one patient, follow-up MR imaging was not reported. Since follow-up MR imaging was not systematically performed in either study, the precise rate and features of the false-negative DWI population are unknown.

Our data describe a group of eight patients with negative initial DWI studies and formally identified stroke lesions on follow-up MR images. The rate of false-negative DWI (5.8%) in our study population is much higher than that reported by Ay et

al (1.5%) but lower than that reported by Lövblad et al (9.3%).

In our study, all false-negative cases occurred in patients imaged within the first 24 hours after the onset of symptoms. False-negative DWI studies have also been reported in patients imaged more than 24 hours after stroke onset (1, 7). These cases are, however, questionable, since in one study (1) MR confirmation was lacking and in the other (7) the duration of symptoms was unknown. Most of the false-negative findings reported by Lövblad et al (4) were in patients who “seemed to have [a] small lesion localized to the brain stem.” Our study confirms that small lesions located in the posterior vascular territory may be missed by DWI. Although very few cases have been reported (1, 9, 11), we did not observe any large hemispheric infarct with negative initial DWI findings.

Although several reports have suggested that false-negative DWI results depend on the location of the lesion and MR latency (1, 4), our study is the first to ascertain the proportion of false-negative studies in relation to these parameters. Within the first 24 hours, the rate of false-negative DWI studies was much higher when the stroke occurred in the posterior circulation (31%) than when it occurred in the anterior circulation (2%), and brain stem lesions were at high risk of being missed by DWI.

Overall, patients presenting with small vertebrobasilar stroke lesions imaged soon after the onset of symptoms were those most likely to have negative DWI findings. Several reasons can be advanced. First, the lesions could be too small for the resolution of the DWI echo-planar sequence. This hypothesis is supported by the fact that FLAIR images, with a higher spatial resolution, displayed a signal abnormality in half the lesions that were not visible on DWI. Second, the signal-to-noise ratio could be insufficient in the first few hours after onset. And, last, magnetic susceptibility artifacts occurring in echo-planar imaging cause brain stem distortions that could blur image analysis. This hypothesis is supported by the high rate of brain stem lesions missed by DWI in this study. DWI performed with turbo spin-echo sequences provides high-resolution images with few susceptibility artifacts and might overcome these technical limitations, particularly in the posterior fossa (13). It has been stated that normal DWI findings coupled with normal perfusion MR findings can identify all patients who present with stroke symptoms but do not have cerebral ischemia (11). However, bolus-tracking perfusion MR imaging also uses echo-planar pulse sequences, and thus has the same drawbacks as echo-planar DWI (limited spatial resolution and strong susceptibility artifacts). In addition, perfusion maps are often normal in lacunar infarcts (11). Thus, one can hypothesize that most echo-planar perfusion maps would have remained negative given the small size and the vertebrobasilar location



of the ischemic stroke lesions missed on DWI examinations.

### Conclusion

Our data suggest that false-negative DWI studies are not uncommon during the first 24 hours of a stroke; that negative DWI findings obtained in the first 24 hours after onset are not a reliable indicator by which to rule out a stroke lesion, especially if symptoms are suggestive of a stroke in the posterior circulation; and that false-negative DWI findings are no longer observed after 24 hours. These are clinically important results, since they indicate that the diagnosis of stroke should not be ruled out on the basis of early negative DWI studies. Moreover, DWI should be repeated more than 24 hours after onset in the event of a negative initial DWI study in a patient with long-lasting clinical symptoms consistent with ischemic stroke.

### References

1. Ay H, Buonanno FS, Schaefer PW, et al. **Posterior leukoencephalopathy without severe hypertension: utility of diffusion-weighted MRI.** *Neurology* 1998;51:1369–1376
2. Gonzalez RG, Schaefer PW, Buonanno FS, et al. **Diffusion-weighted MR imaging: diagnostic accuracy in patients imaged within 6 hours of stroke symptom onset.** *Radiology* 1999;210:155–162
3. Le Bihan D, Breton E, Lallemand D, Grenier P, Cabanis E, Laval-Jeantet M. **MR imaging of intravoxel incoherent motions: application to diffusion and perfusion in neurologic disorders.** *Radiology* 1986;161:401–407
4. Lövblad KO, Laubach HJ, Baird AE, et al. **Clinical experience with diffusion-weighted MR in patients with acute stroke.** *AJNR Am J Neuroradiol* 1998;19:1061–1066
5. Lutsep HL, Albers GW, DeCrespigny A, Kamat GN, Marks MP, Moseley ME. **Clinical utility of diffusion-weighted magnetic resonance imaging in the assessment of ischemic stroke.** *Ann Neurol* 1997;41:574–580
6. Oppenheim C, Logak M, Dormont D, et al. **Diagnosis of acute ischemic stroke with fluid attenuated inversion recovery (FLAIR) and diffusion-weighted MR sequences.** *Neuroradiology* (in press)
7. Singer MB, Chong J, Lu D, Schonewille WJ, Tuhim S, Atlas SW. **Diffusion-weighted MRI in acute subcortical infarction.** *Stroke* 1998;29:133–136
8. Warach S, Dashe JF, Edelman RR. **Clinical outcome in ischemic stroke predicted by early diffusion-weighted and perfusion magnetic resonance imaging: a preliminary analysis.** *J Cereb Blood Flow Metab* 1996;16:53–59
9. Tong DC, Yenari MA, Albers GW, O'Brien M, Marks MP, Moseley ME. **Correlation of perfusion- and diffusion-weighted MRI with NIHSS score in acute (<6.5 hour) ischemic stroke.** *Neurology* 1998;50:864–870
10. Albers GW. **Expanding the window for thrombolytic therapy in acute stroke: the potential role of acute MRI for patient selection.** *Stroke* 1999;30:2230–2237
11. Sunshine JL, Tarr RW, Lanzieri CF, Landis DM, Selman WR, Lewin JS. **Hyperacute stroke: ultrafast MR imaging to triage patients prior to therapy.** *Radiology* 1999;212:325–332
12. Kidwell CS, Alger JR, Di Salle F, et al. **Diffusion MRI in patients with transient ischemic attacks.** *Stroke* 1999;30:1174–1180
13. Lövblad KO, Jakob PM, Chen Q, et al. **Turbo spin-echo diffusion-weighted MR of ischemic stroke.** *AJNR Am J Neuroradiol* 1998;19:201–208