

Are your **MRI contrast agents** cost-effective?

Learn more about generic **Gadolinium-Based Contrast Agents**.



**FRESENIUS
KABI**

caring for life

AJNR

**Evaluation of Distal Extracranial Internal
Carotid Artery by Transoral Carotid
Ultrasonography in Patients with Severe
Carotid Stenosis**

Kazuhiro Kishikawa, Masahiro Kamouchi, Yasushi Okada,
Tooru Inoue, Setsuro Ibayashi and Mitsuo Iida

This information is current as
of April 23, 2024.

AJNR Am J Neuroradiol 2002, 23 (6) 924-928
<http://www.ajnr.org/content/23/6/924>

Evaluation of Distal Extracranial Internal Carotid Artery by Transoral Carotid Ultrasonography in Patients with Severe Carotid Stenosis

Kazuhiro Kishikawa, Masahiro Kamouchi, Yasushi Okada, Tooru Inoue, Setsuro Ibayashi, and Mitsuo Iida

BACKGROUND AND PURPOSE: Conventional ultrasonography techniques do not allow visualization of the distal cervical segment of the internal carotid artery (ICA). In a study of patients with severe ICA stenosis, we performed transoral carotid ultrasonography (TOCU) to assess its ability to image this segment of the artery.

METHODS: The study participants consisted of 20 consecutive patients who had severe carotid stenosis and who underwent carotid endarterectomy between 1999 and 2000. TOCU, conventional carotid ultrasonography, and cerebral angiography were prospectively performed before and after carotid endarterectomy.

RESULTS: In all patients, the distal portion of the ICA could be clearly detected by B mode using TOCU and no plaque was observed. The diameter of the distal portion of the ICA significantly increased after carotid endarterectomy (3.9 ± 0.5 mm [mean \pm SD]), compared with before (3.5 ± 0.8 mm), when it was estimated by TOCU ($P < .01$). In seven patients, the postoperative diameter of the distal ICA increased $>10\%$. The mean increase in the postoperative diameter was estimated to be $15.0 \pm 23.0\%$ by TOCU, which significantly correlated with the findings ($23.9 \pm 33.7\%$) based on cerebral angiography ($P < .01$). The diameter increased $>10\%$ postoperatively in 71% of the patients with the degree of cross-sectional stenosis $>95\%$ as shown by carotid ultrasonography and in 86% of the patients whose preoperative diameter was <3.0 mm.

CONCLUSION: TOCU provides additional information regarding the characteristics of the distal ICA that can be obtained neither by conventional carotid ultrasonography nor by angiography.

Multicenter randomized trials revealed evidence that stroke risk is reduced by carotid endarterectomy (CEA) in patients with severe carotid stenosis (1-4). Extracranial carotid lesions are less frequent among Japanese than among North Americans and Europeans. However, a recent report stated that extracranial carotid lesions are increasing, even among Japanese (5). Extracranial atherosclerotic carotid lesions are located

within 2 cm from the origin of the internal carotid artery (ICA) in most patients (6). Therefore, conventional carotid ultrasonography is able to depict the carotid lesions in most of the patients with carotid stenosis (7, 8). However, duplex scanning may be difficult when the bifurcation is very high and when the carotid plaque is heavily calcified, thus preventing an adequate insonation of the bulb. In such cases, only a limited area of ICA can be observed by conventional carotid ultrasonography. MR angiography is another method for evaluating the extracranial ICA. However, it often overestimates the grade of carotid stenosis, which can thus lead to an inaccurate interpretation of the results (9).

At present, angiography is the most reliable method for evaluating carotid stenosis. However, using angiography alone, it is also impossible to distinguish whether the distal ICA is narrow as a result of pathologic lesions such as atherosclerosis or as a result of other causes such as hypoplasia. Thus, caution is still required when interpreting the findings.

Received August 27, 2001; accepted after revision February 18, 2002.

Supported by Research Grants for Cardiovascular Diseases (12A-2 and 12C-10) from the Ministry of Health and Welfare of Japan.

From the Departments of Cerebrovascular Disease (K.K., M.K., Y.O.) and Neurosurgery (T.I.), National Kyushu Medical Center, and the Department of Medicine and Clinical Science (S.I., M.I.), Graduate School of Medical Sciences, Kyushu University, Fukuoka, Japan.

Address reprint requests to Kazuhiro Kishikawa, MD, Department of Cerebrovascular Disease, National Kyushu Medical Center, Jigyohama, Chuo-ku, Fukuoka 810-8563, Japan.

TABLE 1: Demographic and clinical characteristics

Age (years)	67.6 ± 6.6
Male:Female (n)	17:3
Degree of stenosis (%)	74.9 ± 14.6
Symptomatic attack	19/20 (95%)
Minor stroke	8/20 (40%)
Transient ischemic attack	11/20 (55%)
Risk factors	
Hypertension	16/20 (80%)
Smoking	15/20 (75%)
Hyperlipidemia	11/20 (55%)
Diabetes mellitus	7/20 (35%)
Vascular complications	
Ischemic heart disease	7/20 (35%)
Arteriosclerosis obliterans	2/20 (10%)

Note.—Values are expressed as mean ± SD. The degree of carotid stenosis was calculated using the method described by the North American Symptomatic Carotid Endarterectomy Trial group 1. Ischemic heart disease was diagnosed by myocardial scintigraphy, and arteriosclerosis obliterans was diagnosed by ankle pressure index, pulse wave, and clinical symptoms.

Recently, a new technique, transoral carotid ultrasonography (TOCU), has been developed to examine the distal extracranial ICA (cervical portion). Yasaka et al (10) reported that TOCU enables us to evaluate the distal ICA noninvasively at the patient's bedside. This technique might overcome the defects associated with conventional methods, including carotid ultrasonography, MR angiography, and angiography. In the present study, we investigated the vessel diameter and various parameters about the flow velocity, as well as the B-mode appearance of the distal ICA, in patients with high grade carotid stenosis by using TOCU.

Methods

Patients

The study participants consisted of 20 consecutive patients who underwent CEA at our hospital between 1999 and 2000. Therefore, the entry criteria were identical to those for CEA (11). The demographic and clinical characteristics of the patients are summarized in Table 1. TOCU, carotid ultrasonography by external approach, and cerebral angiography were prospectively performed before and after CEA.

TOCU

ATL HDI 5000 (Hitachi Co.) was used for color Doppler flow imaging. The 12- to 5-MHz linear array transducer was used for conventional carotid ultrasonography. The 9- to 5-MHz convex array transducer, which was originally designed for transrectal probe, was used for TOCU. The methods for TOCU were similar to those described by Yasaka et al (10). The probe tip was painted with echo jelly and was covered with a clean cover and gently touched to the pharyngeal posterolateral wall. The ICA, external carotid artery, and jugular vein could be identified using the B mode, color flow image, and Doppler flow pattern. The appearance of the arterial wall was observed by B mode with TOCU. The diameter and flow velocity of the distal ICA were measured by TOCU before and after CEA. For the present study, we defined the cervical portion of the ICA as the distal ICA. Using TOCU, extracranial ICA was visualized as a vertical linear vessel bent slightly backward. We measured the diameter of the ICA at the nearest

point from the surface of the posterior pharyngeal wall (at a depth of approximately 2 cm). Measurement of the diameter was performed three times, and mean value was adopted. However, the obtained values were identical to each other in most cases. TOCU was performed by a neurologist (K.K.) who had performed the examination in approximately 200 patients. Conventional carotid ultrasonography was also performed by the same examiner. These ultrasonography examinations were performed before angiography, and the examiner was thus not aware of the results of the measurements obtained with the other modality (digital subtraction angiography). We examined the relationship between the grade of carotid stenosis and the postoperative dilatation of the distal ICA. The degree of ICA stenosis was calculated by cross-sectional area obtained using conventional carotid ultrasonography and the percent increase in the diameter of the distal ICA was estimated by TOCU.

Operation Procedure

Endarterectomy was performed by a neurosurgeon (T.I.) using a microscope. Anesthesia was introduced by fentanyl citrate, thiamylal sodium, and propofol. The blood pressure, heart rate, blood gas analysis, and various Doppler flow parameters in the carotid artery were monitored, and an electroencephalogram was continuously monitored throughout the procedure. A shunt tube was inserted into both ends of the carotid artery to preserve the bypass flow to the intracranial distal arteries in all except one case. In one case, the distal ICA was clamped during the procedure, because its diameter was too thin for insertion of the tube.

Statistical Analysis

The changes in the parameters before and after CEA were analyzed using the Wilcoxon's signed-rank-sum test. A regression analysis was used to analyze the relationship between the percent increase in the diameter of the distal ICA estimated by both TOCU and that by cerebral angiography. $P < .05$ was considered to be significant.

Results

Patient Demographics

Table 1 summarizes the patient characteristics. The patients consisted of 17 men and three women with a mean age of 67.6 ± 6.6 years (mean ± SD). The grade of carotid stenosis was estimated by angiography, using the North American Symptomatic Carotid Endarterectomy Trial method (1) and ranged between 44% and 99%. The average carotid stenosis was $74.9 \pm 14.6\%$. Nineteen of 20 patients had symptomatic carotid lesions. The patients had risk factors that included hypertension (80%), smoking (75%), hyperlipidemia (55%), and diabetes mellitus (35%). They had systemic vascular complications, such as ischemic heart disease (35%) and arteriosclerosis obliterans (10%).

B-Mode Appearance of the Distal ICA

For all patients, the distal ICA could be detected by B mode on TOCU and no plaque was observed. Figure 1 shows collapse of the distal ICA due to severe stenosis located in the origin of the ICA. TOCU clearly discriminates the vessel properties of the distal ICA.

Fig 1. Angiographic and ultrasonographic findings of carotid arteries before (left panels) and after (right panels) CEA. Arrowheads indicate severe stenosis in the origin of the ICA. Note that the distal ICA dilated after CEA.

- A, Angiographic findings before CEA.
 B, TOCU findings before CEA.
 C, Conventional carotid ultrasonographic findings before CEA.
 D, Angiographic findings after CEA.
 E, Transoral carotid ultrasonographic findings after CEA.
 F, Conventional carotid ultrasonographic findings after CEA.

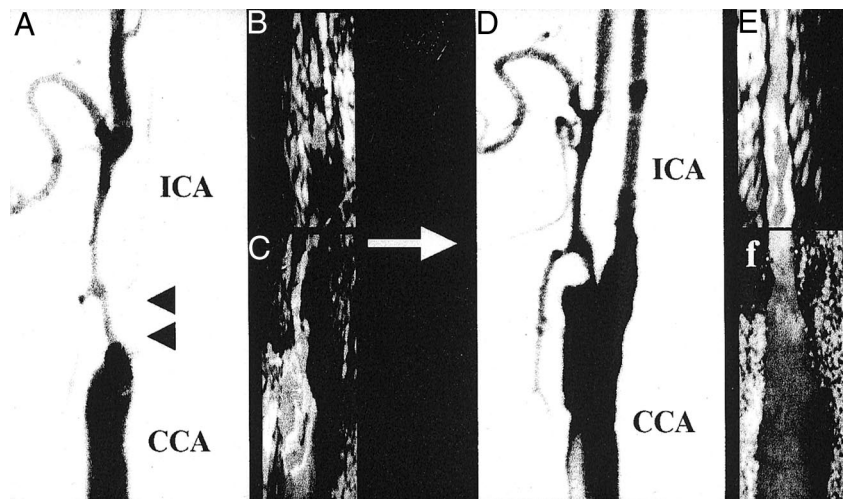


TABLE 2: Change in parameters before and after carotid endarterectomy

	Preoperation	Postoperation	P
Angiography			
ICA:CCA	0.51 ± 0.16	0.59 ± 0.14	<0.01
TOCU			
B mode			
Diameter (mm)	3.5 ± 0.8	3.9 ± 0.5	<0.01
Flow velocity (cm/s)			
Peak systolic velocity	69.2 ± 25.6	71.5 ± 20.9	NS
End-diastolic velocity	23.8 ± 7.1	24.2 ± 7.1	NS
Mean flow velocity	38.8 ± 12.2	40.7 ± 11.8	NS

Note.—ICA indicates internal carotid artery; CCA, common carotid artery; TOCU, transoral carotid ultrasonography; NS, not significant. Values are mean ± SD. *P* values exceeding .05 were considered to be significant. ICA:CCA indicates the ratio of the diameter of the internal carotid artery to that of the common carotid artery. The flow velocity of the distal internal carotid artery was obtained by transoral carotid ultrasonography.

Changes in Flow Velocity in the Distal ICA

The mean flow velocity of the distal ICA showed a slight increase postoperatively (40.7 ± 11.8 cm/s) compared with preoperatively (38.8 ± 12.2 cm/s), although the difference was not statistically significant ($P = .5$) (Table 2). Neither the peak systolic (69.2 ± 25.6 , preoperatively; 71.5 ± 20.9 , postoperatively) ($P = .3$) nor the end diastolic (23.8 ± 7.1 , preoperatively; 24.1 ± 7.1 , postoperatively) ($P = .8$) flow velocities were significantly changed after CEA.

Dilatation of Distal ICA after CEA

The diameter significantly increased from 3.5 ± 0.8 to 3.9 ± 0.5 mm after endarterectomy ($P < .01$) (Fig 2). The ratio of the diameter of the ICA to the diameter of the common carotid artery, obtained at an identical level and based on the findings of cerebral angiography, significantly increased after CEA (0.59 ± 0.14) compared with before (0.51 ± 0.26 ; $P < .01$). The percent increases in the diameter of the distal ICA estimated by both TOCU and cerebral angiography were $15.0 \pm 23.0\%$ and $23.9 \pm 33.7\%$,

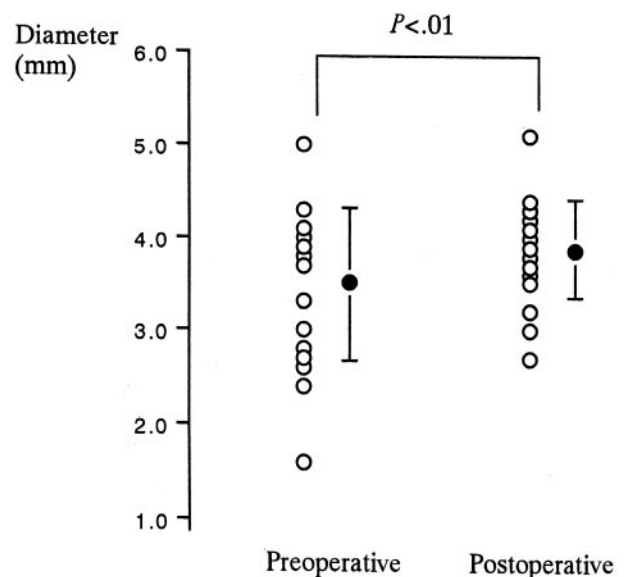


Fig 2. Diameter of the distal ICA before and after CEA is plotted. Diameter was measured intraorally at the level of the post-pharyngeal portion by using TOCU. Closed circles and error bars indicate mean ± SD.

respectively. The postoperative increase in the distal ICA diameter estimated by two different methods correlated significantly ($P < .01$) (Fig 3). In seven (35%) of 20 patients, the distal ICA was dilated >10% when estimated by TOCU. In three patients, the postoperative increase in the distal ICA diameter as estimated by cerebral angiography was more remarkable than that by TOCU (Fig 3). The mean flow velocity of the distal ICA in these three patients was significantly lower (25.4 ± 1.4 cm/s) than that in the other patients (41.2 ± 11.7 cm/s) when the Mann-Whitney U test ($P < .05$) was used.

Because the grade of carotid stenosis was higher, the ICA dilated to a much greater extent. The increase in postoperative dilatation of the distal ICA was >10% in five (71%) of seven patients who were shown to have >95% stenosis when carotid ultrasonography was used (Fig 4). In seven patients with an ICA diameter of <3.0 mm before CEA, six pa-

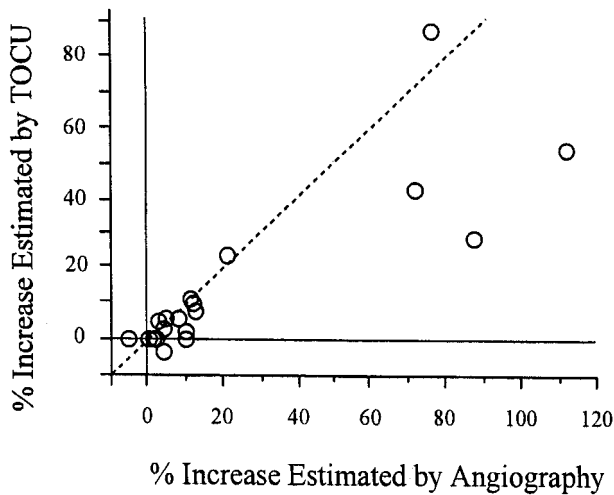


FIG 3. Comparison of the percent increase in the diameter of the distal ICA as estimated by TOCU and cerebral angiography.

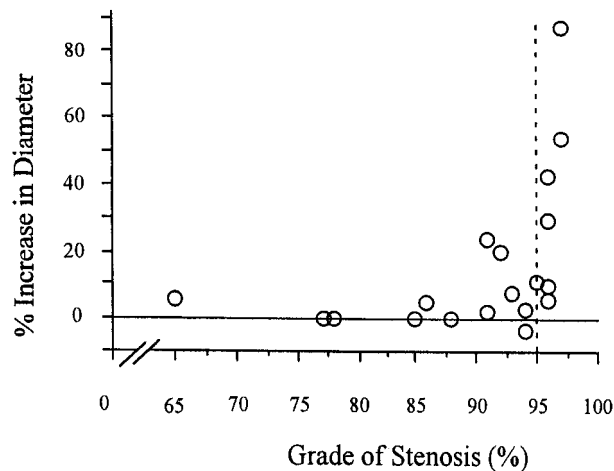


FIG 4. Relationship between degree of carotid stenosis and postoperative dilatation of the ICA. Percent increase in the diameter of the distal ICA was plotted against the grade of carotid stenosis. Grade of carotid stenosis in a cross-sectional area was estimated by conventional carotid ultrasonography. Diameter of the distal ICA was estimated by TOCU. Dotted line indicates 95% stenosis.

tients showed dilatation of the distal ICA of $>10\%$ postoperatively (Fig 5).

Discussion

Randomized clinical studies showed that CEA could reduce the risk of subsequent ipsilateral cerebral ischemia in patients with symptoms of cerebral or retinal ischemia in the distribution of high grade carotid stenosis. An angiographic assessment is indispensable in selecting those patients for whom CEA will be highly beneficial, because the degree of carotid stenosis is estimated by the findings of cerebral angiography. Angiography is essential for visualizing the distribution of atherosclerotic changes in cerebral arteries. However, angiography has some defects: 1) angiography can show the inner rim of the vascular lumen but not provide information regarding the outer diame-

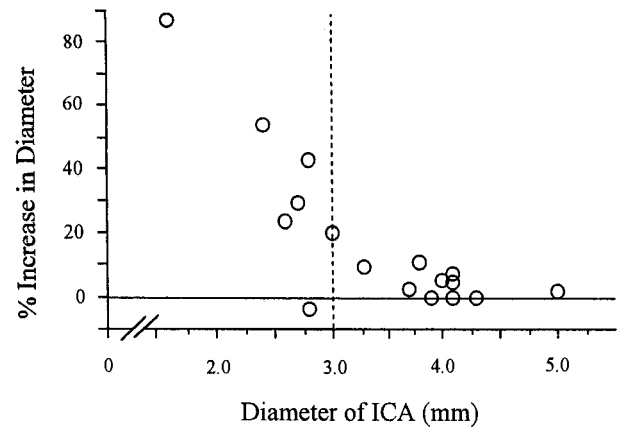


FIG 5. Relationship between preoperative diameter and postoperative dilatation of the ICA. Percent increase in the diameter of the distal ICA was plotted against the preoperative diameter of the distal ICA. Diameter of the distal ICA was estimated by TOCU. Dotted line indicates diameter of 3.0 mm.

ter; 2) neither the characteristics of the vascular wall nor the degree of stenosis in a cross-sectional area can be evaluated; 3) when the stenosis is extremely severe, the lumen cannot be filled with contrast medium (laminar flow) (12); and 4) cerebral angiography is invasive and not suitable for repetitive examinations.

Conventional carotid ultrasonography is useful for evaluating the common carotid artery or the origin of the ICA and external carotid artery, and it can be performed noninvasively at the patient's bedside. However, it is still difficult to distinguish severe stenosis or occlusion in the presence of calcified plaque or in patients with high bifurcation. Moreover, Hass et al (13) reported that frequency distribution of stenosis or occlusion in the cervical portion of the ICA was approximately 9% of 4748 patients with the signs and symptoms of ischemic cerebrovascular disease. Therefore, possible arterial lesions in the distal ICA must be evaluated in patients with carotid stenosis. No detailed information regarding the distal ICA can be obtained by using only conventional carotid ultrasonography. MR angiography is another tool with which to noninvasively evaluate carotid lesions. However, the resolution does not provide sufficiently detailed information regarding the vascular lumen and MR angiography often overestimates the grade of carotid stenosis (9).

When the distal ICA appears to be extensively narrow based on the angiographic findings, the following possibilities exist: 1) the vessel lumen is actually narrow over long distances by atherosclerosis or other organic lesions; 2) the lumen may collapse due to reduced blood flow; 3) the vessel is hypoplastic; or 4) the lumen is not fully filled with contrast medium because of severe stenosis. A differential diagnosis of these conditions is impossible by using only carotid ultrasonography or only angiography. Recently, Yasaka et al (10) reported that the distal ICA can be noninvasively observed by TOCU. It enables us to measure the diameter, cross-sectional area, and flow velocity in the distal ICA.

The present results clearly showed that the properties of the distal ICA could be evaluated by TOCU in all cases. TOCU provides more detailed information regarding the ICA in the cervical portion in patients with stenosis of the origin of the ICA.

In the present study, we investigated the characteristics of the distal ICA and its change after endarterectomy. The diameter of the distal ICA significantly increased from 3.5 ± 0.8 to 3.9 ± 0.5 mm after CEA ($P < .01$). This indicates that the post-stenotic portion of the ICA collapsed because of low blood flow preoperatively and dilated after the removal of stenosis. We next compared the distensibility of ICA after CEA as estimated by TOCU and angiography. In the present study, the percent increase in the diameter of the distal ICA as calculated by angiography was much higher than that calculated by TOCU in three of 20 patients. In these patients, the flow velocity of the distal ICA as detected by TOCU was significantly lower (25.4 ± 1.4 cm/s) than that in other patients (41.2 ± 11.7 cm/s; $P < .05$). When the lumen is not sufficiently filled up with contrast medium because of laminar flow, the apparent diameter evaluated by angiography might become smaller than that evaluated by TOCU. Therefore, the present results are consistent with the idea that the preoperative diameter of the distal ICA was underestimated by angiography not only because of collapse but also because of laminar flow. As a result, judging the indications for CEA in such patients may be inaccurate.

We also investigated the relationships between the degree of stenosis and postoperative dilatation. As the stenosis became more severe, postoperative dilatation became more prominent. When the cross-sectional area of the lumen is $<5\%$, the distal ICA tends to show remarkable dilatation after CEA (Fig 4). The ICA was dilated after endarterectomy to a great extent, when its diameter was below 3.0 mm (Fig 5). As a result, cross-sectional stenosis $>95\%$ in the origin of the ICA or a preoperative diameter of < 3.0 mm in the distal ICA might thus suggest postoperative dilatation. Thus, the preoperative diameter of the ICA as well as the grade of carotid stenosis might predict the distensibility of the distal ICA.

This study is the first report to show dilatation in the post-stenotic portion of the distal ICA after removal of stenosis. In these patients, the grade of carotid stenosis may be underestimated if it is calculated by the North American Symptomatic Carotid Endarterectomy Trial method. Additional studies are needed to elucidate the efficacy of CEA in patients with high grade carotid stenosis and narrow distal ICA. Previous randomized trials evaluated severe carotid stenosis by using only angiography. However, angiography alone cannot provide sufficient information regarding the distal ICA in patients with severe

carotid stenosis. It is possible that such patients may not be indicated for CEA if the apparent diameter of the distal ICA is narrow because of collapse and/or laminar flow. In some cases, angiographic findings may lead to inaccurate indications for CEA.

Conclusion

TOCU is a method for providing additional information regarding the distal ICA. In cases in which the preoperative diameter of the distal ICA is <3.0 mm or the degree of cross-sectional stenosis is $>95\%$, a possible collapse of the distal ICA must be considered during differential diagnosis.

Acknowledgments

The authors are grateful to Drs. K. Yasumori, S. Arakawa, and T. Katsuta for useful suggestions.

References

1. North American Symptomatic Carotid Endarterectomy Trial Collaborators. **Beneficial effect of carotid endarterectomy in symptomatic patients with high-grade carotid stenosis.** *N Engl J Med.* 1991; 325:445-453
2. European Carotid Surgery Trialists' Collaborative Group. **MRC European carotid surgery trial: interim results for symptomatic patients with severe (70-99%) or with mild (0-29%) carotid stenosis.** *Lancet* 1991;337:1235-1243
3. Mayberg MR, Wilson SE, Yatsu F, et al. **Carotid endarterectomy and prevention of cerebral ischemia in symptomatic carotid stenosis.** *JAMA* 1991;266:3289-3294
4. Executive Committee for the Asymptomatic Carotid Atherosclerosis Study. **Endarterectomy for asymptomatic carotid artery stenosis.** *JAMA* 1995;273:1421-1428
5. Nagao T, Sadoshima S, Ibayashi S, Takeya Y, Fujishima M. **Increase in extracranial atherosclerotic carotid lesions in patients with brain ischemia in Japan: an angiographic study.** *Stroke* 1994; 25:766-770
6. Fisher CM, Gore I, Okabe N, White PD. **Atherosclerosis of the carotid and vertebral arteries: extracranial and intracranial.** *J Neuropathol Exp Neurol* 1965;24:455-476
7. Handa N, Matsumoto M, Maeda H, Hougaku H, Kamada T. **Ischemic stroke events and carotid atherosclerosis: results of the Osaka Follow-up Study for Ultrasonographic Assessment of Carotid Atherosclerosis (The OSACA Study).** *Stroke* 1995;26:1781-1786
8. Kagawa R, Moritake K, Shima T, Okada Y. **Validity of B-mode ultrasonographic findings in patients undergoing carotid endarterectomy in comparison with angiographic and clinicopathologic features.** *Stroke* 1996;27:700-705
9. Huston J III, Lewis BD, Wiebers DO, Meyer FB, Riederer SJ, Weaver AL. **Carotid artery: prospective blinded comparison of two-dimensional time-of-flight MR angiography with conventional angiography and duplex US.** *Radiology* 1993;186:339-344
10. Yasaka M, Kimura K, Otsubo R, et al. **Transoral carotid ultrasonography.** *Stroke* 1998;29:1383-1388
11. Biller J, Feinberg WM, Castaldo JE, et al. **Guidelines for carotid endarterectomy: A statement for healthcare professionals from a special writing group of the Stroke Council, American Heart Association.** *Stroke* 1998;29:554-562
12. Kern MJ, Gibson P, Vandormael M. **Alteration of "jetlike" laminar flow after percutaneous transluminal angioplasty of saphenous vein bypass graft stenosis.** *Cathet Cardiovasc Diagn* 1986;12:165-168
13. Hass WK, Fields WS, North RR, Kricheff II, Chase NE, Bauer RB. **Joint study of extracranial arterial occlusion: II. arteriography, techniques, sites, and complications.** *JAMA* 1968;203:961-968