

Y. Ge

**SUMMARY:** MR offers by far the most sensitive technique for detecting multiple sclerosis (MS) lesions and has proved to be an important paraclinical tool for diagnosing MS and monitoring therapeutic trials. Technologic advances of MR in recent years have dramatically improved our understanding of MS disease. This review will focus on the contribution of MR imaging in MS and provide a discussion of conventional and advanced nonconventional MR techniques with regard to current findings, clinical correlations, and future directions.

**M**ultiple sclerosis (MS) is considered an inflammatory autoimmune neurologic disease that is characterized by pathologic changes, including demyelination and axonal injury. The first MR images of MS were produced in the early 1980s, when MR was introduced into hospitals. The high conspicuity abnormal signal intensities of MS lesions seen on MR imaging provided the best view yet of tissue injury, lesion activity, and disease accumulation compared with all other imaging modalities, including CT. Since then, MR imaging has become a routine clinical examination in MS and is used to help the diagnosis and track the natural course of the disease. With the advent of newer quantitative MR techniques—including volumetric MR imaging, magnetization transfer imaging (MTI), diffusion tensor imaging (DTI), and proton MR ( $^1\text{H-MR}$ ) spectroscopy—our ability to detect and characterize the disease burden, including occult microscopic disease invisible when using conventional MR techniques, has largely improved. Today, MR imaging is the most important paraclinical tool for MS, and MR imaging–derived measures have been established as standard outcome markers to monitor the treatment response in various MS clinical trials.

### Conventional MR Imaging

Conventional MR scanning offers the most sensitive way to detect MS lesions and their changes and plays a dominant role in ruling in or ruling out a diagnosis of MS. Although MS lesion plaques can be found throughout the brain, they have a predilection for periventricular white matter and tend to have an ovoid configuration with the major axes perpendicular to the ventricular surface.<sup>1</sup> At the initial stage, the lesions are typically thin and appear to be linear (Dawson's fingers), which is probably associated with the inflammatory changes around the long axis of the medullary vein that create the dilated perivenular space<sup>2</sup> (Fig 1). Histopathologically, such perivascular inflammation has been thought to play a primary role in the disruption of the blood-brain barrier (BBB), in myelin breakdown, and in the formation of new lesions.<sup>3</sup> In addition to the periventricular region, the corpus callosum, subcortical region, brain stem, U-fibers, optic nerves, and visual pathway are also regions where lesions are frequently located. The focal demyelinating lesions located along the lateral borders of the corpus callosum are best depicted by sagittal fluid-attenuated inversion recovery (FLAIR) imaging (Figs 2 and 3). The abnormalities of the corpus callosum, U-fibers,

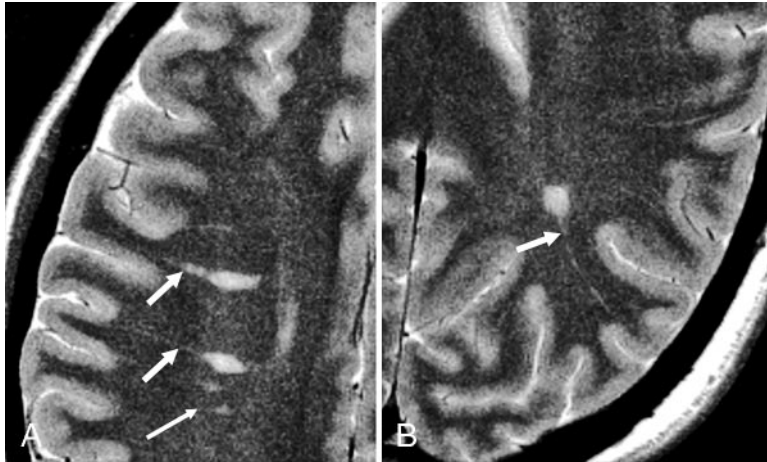
and optic nerves, however, may allow for the differentiation of MS from cerebrovascular disease. Although MS is a disease that predominantly affects white matter, lesions can and do occur in gray matter and are better detected on FLAIR imaging.<sup>4</sup> In gray matter, MS lesions are usually small with an intermediate high signal intensity and a less severe degree of inflammation, which may cause the obscure appearance of gray matter lesions on MR imaging compared with that of white matter lesions.<sup>5</sup> Optic neuritis, which appears early and may be the only presentation in the initial stage of MS, can be detected by using a fat-suppression technique combined with contrast-enhanced imaging or by using long-echo short-tau inversion recovery (STIR) imaging.<sup>6,7</sup>

On T1-weighted imaging (T1WI), the acute MS lesions are often isointense to the normal white matter but can be hypointense if chronic tissue injury or severe inflammatory edema occurs. The accumulation of hypointense lesions (so-called black holes) may correlate with disease progression and disability.<sup>8</sup> In the acute inflammatory phase, the lesion may disrupt the BBB, leading to gadolinium enhancement (Fig 2) that is believed to be the first detectable event on conventional MR imaging,<sup>9,10</sup> and may last from days to weeks.<sup>11,12</sup> Enhancing lesions, which may vary in shape and size; usually start as homogeneous enhancing nodules and subsequently progress to ringlike enhancements. Contrast-enhanced T1WI is now routinely used in the study of MS and provides one in vivo measure of inflammatory activity. It is able to detect disease activity 5–10 times more frequently than the clinical evaluation of relapses,<sup>13</sup> which suggests that most of the enhancing lesions are clinically silent. In the chronic stage, lesions often appear as isointense or hypointense on T1WI and usually persist for many years on T2WI. Some patients may experience the expansion of a pre-existing lesion with or without enhancement.

In recent years, MR imaging findings including the lesion number and location are included in the diagnostic criteria of MS.<sup>14</sup> To address the role of conventional MR imaging in MS, however, several issues must be noted. First, the ability to detect lesions depends on not only the pulse sequence and imaging parameters, but also the field strength. Keiper et al found a mean of 88 more lesions on images obtained at 4T compared with images obtained at 1.5T in 15 patients with MS.<sup>15</sup> Second, the number of enhancing lesions, which is suggestive of new lesions and inflammatory MR imaging activity, can be influenced by the dosage of the contrast agent. Studies have shown that a triple dose or 3 subsequent single doses can result in an increased number and size of enhancing lesions.<sup>16,17</sup> Third, numerous cortical lesions have been observed on histopathologic examination,<sup>18</sup> but they are not commonly seen on conventional MR imaging. Further work must be done to develop

From Department of Radiology/Center for Biomedical Imaging, New York University Medical Center, New York, NY.

Address correspondence and reprint requests to Yulin Ge, Department of Radiology/Center for Biomedical Imaging, New York University Medical Center, 650 First Ave, Room 615, New York, NY 10016.



**Fig 1.** Axial T2-weighted images of a 43-year-old RRMS patient show prominent perivascular spaces (*short arrows*), which project radially and are aligned with lesions, following the course and configuration of deep venular structures. This may be associated with perivascular inflammation, which initiates the development of new lesions (*long arrow*). These prominent perivascular spaces might have implications for differentiating primary from secondary demyelinating lesions.

a better sequence that would provide optimal higher spatial resolution and contrast for these lesions.

### Volumetric MR Imaging: Lesion Quantification and Brain Atrophy

#### Lesion Load

In the past 2 decades, MR imaging has been frequently used to assess the disease burden, which is often based on the quantification of the T2 lesion load (ie, the total lesion volume and/or number) on MR imaging. A number of computer-assisted techniques for measuring MS lesion load have been developed to provide a fast, objective, and precise quantitative means for determining the extent of disease abnormality. The accuracy and reproducibility of these techniques depend on the imaging sequence, the section thickness, the degree of automaticity, and the technique itself.<sup>19</sup> By applying the measures of lesion load on T2WI and total lesion activity on enhanced T1WI to clinical trial studies, objective screening of new putative therapies has been achieved to determine whether the drug favorably modifies the total pathologic evolution.<sup>20–22</sup> The T2 lesion volume increases approximately 10% each year in early relapsing-remitting (RRMS) despite month-to-month fluctuations,<sup>23</sup> which indicates that most RRMS will eventually develop into secondary progressive MS (SPMS). Overall, T2 lesion load is significantly higher and enhancing T1 lesion load is lower in SPMS than in RRMS.<sup>24,25</sup>

The T1 lesion load including enhancing lesions or black holes correlated more closely than T2 lesion load with clinical outcome<sup>26</sup> as measured by Kurtzke's Expanded Disability Status Scale.<sup>27</sup> MS lesions on T2WI, however, are spatially and pathologically nonspecific and T2 lesion load does not include the pathology underlying so-called normal-appearing white matter (NAWM), which is now clearly known to be abnormal. Therefore, although lesion load measures may not appear to adequately account for the patient's functional state, they provide important information in monitoring the natural history and treatment effects of the disease.<sup>28</sup>

#### Brain Atrophy

In addition to lesions, another imaging hallmark of MS is brain atrophy, which is considered to be a net accumulative disease burden as the ultimate consequence of all types of pathologic processes found in the brain.<sup>29</sup> Brain atrophy in MS

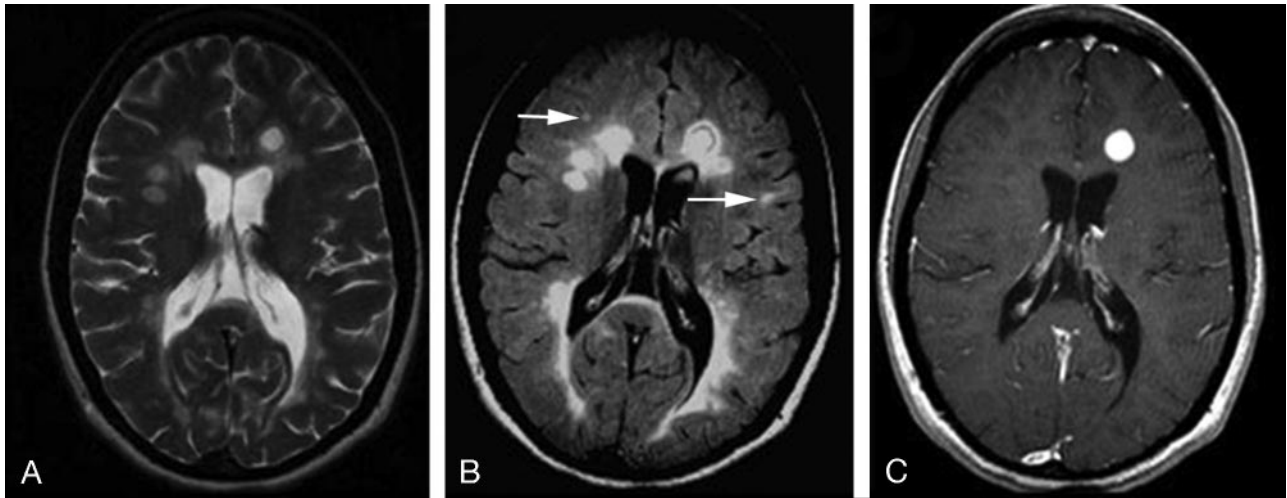
usually appears as enlarged ventricles and the reduced size of the corpus callosum.<sup>30</sup> Recently, numerous quantitative methods have been developed for the precise measurement of global and regional brain tissue loss.<sup>29</sup> Atrophy is seen in all stages in a progressive manner, including patients with early MS,<sup>31</sup> emphasizing the need for the earlier involvement of neuroprotective intervention. The rate of brain atrophy is higher in MS (0.6–1.0% annually) than in the

normal aging process (0.1–0.3% annually).<sup>32–36</sup> Although the exact mechanism of atrophy in MS is not completely clear, it may result largely from myelin and axonal loss. A study found significant loss of white matter rather than gray matter in the early stage of MS,<sup>37</sup> which might indicate a different mechanism of atrophy in MS versus other neurodegenerative diseases such as Alzheimer disease.<sup>37</sup> Wallerian degeneration, particularly in the neuronal pathways, may also contribute to tissue loss in MS.<sup>38</sup> It has been suggested that the rate of brain atrophy is independent of the disease subtype<sup>33,35</sup> despite the significantly higher inflammatory activity often observed in RRMS versus SPMS.<sup>25</sup> The short-term fluctuation of brain volume (including a small increase) is more likely to be observed in RRMS.<sup>39</sup> Steroid treatment can reduce inflammation and may also cause short-term brain volume changes.<sup>40</sup> Global atrophy has been found in other forms of MS, including primary progressive MS and MS with monosymptomatic disease,<sup>41,42</sup> which indicates that atrophy is a significant and universal feature of MS. With this in mind, the quantitative measure of atrophy has been studied and included as an outcome measure in clinical trials of new disease-modifying agents. Several studies have already shown some therapeutic effects on atrophy on the basis of such atrophy measures.<sup>20,43,44</sup> Importantly, the correlation between brain atrophy and clinical disability is stronger than the correlation between lesion load and clinical disability.<sup>45</sup>

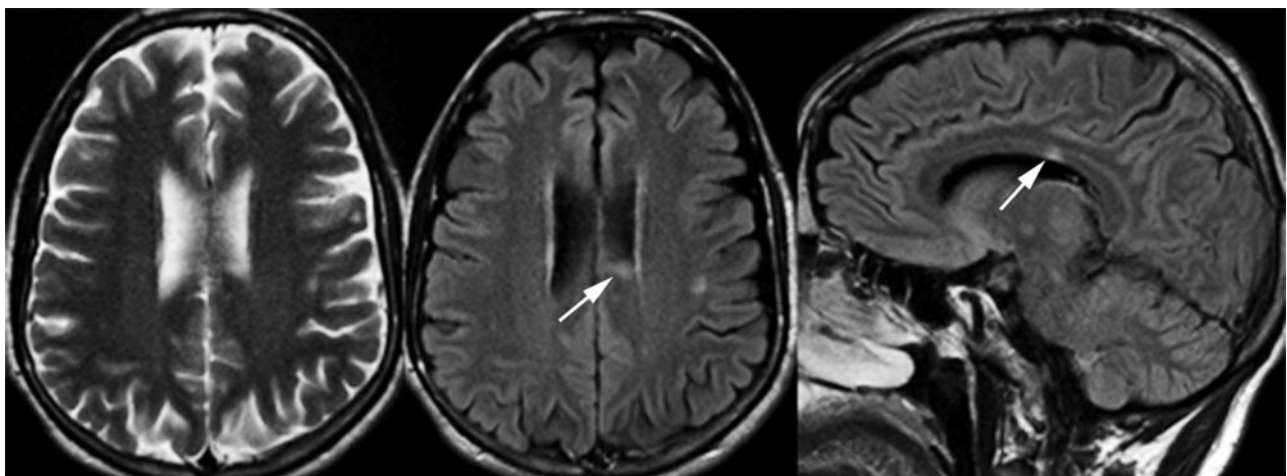
In sum, volumetric MR imaging provides an objective account of the natural history of disease progression, activity, and tissue loss in MS and provides clinicians with a valuable tool for quantifying the disease. Currently, however, studies by using such automated segmentation techniques are mainly based on programs that were developed “in-house.” A reliable, quick, and clinician-friendly technique that can be used in the routine clinical setting remains in strong demand.

#### Magnetization Transfer Imaging

Unlike conventional MR imaging, MTI offers greater pathologic specificity for macromolecules such as myelin, and its signal intensity is inherently independent.<sup>46</sup> Dousset et al<sup>47</sup> and Grossman et al<sup>48</sup> quantified the MT effects by calculating the magnetization transfer ratio (MTR), which provides a unique imaging marker of myelin disorder. Normally, white



**Fig 2.** A 30-year-old female RRMS patient shown on T2WI (A), FLAIR (B), and contrast-enhanced T1WI. The lesions on FLAIR are usually prominent and several small lesions are depicted only on FLAIR (arrows). The lesion enhancement can be nodule (as shown in this case) or ringlike on T1-weighted imaging.



**Fig 3.** MS lesion (arrow) in corpus callosum on FLAIR imaging is failed to be picked up on T2-weighted imaging.

matter has higher MTR than gray matter<sup>49</sup> probably because of the larger amount of myelin. Because MTR is proportional to the concentration of macromolecules (eg, myelin attenuation), the reduced MTR indicates the presence of pathologic and/or structural tissue injury. To assess the pathologic specificity of MTR in MS, studies by using MTI on experimental autoimmune encephalomyelitis (EAE), an animal model of autoimmune demyelination, have shown that the MTR correlates well with the level of demyelination.<sup>50</sup> In addition, the greater pathologic specificity of the MTR has also been demonstrated in several brain development studies,<sup>51,52</sup> in which the MTR has been shown to increase gradually with age during normal brain maturation in children. For example, a study by Engelbrecht et al<sup>51</sup> showed a significant increase in MT contrast ranging from 13%–19% to 34%–37% in white matter in children aged 1–80 months. This is largely attributed to the progress of myelination, as the concentration of cholesterol and galactocerebroside in the myelin sheath increase.<sup>53</sup>

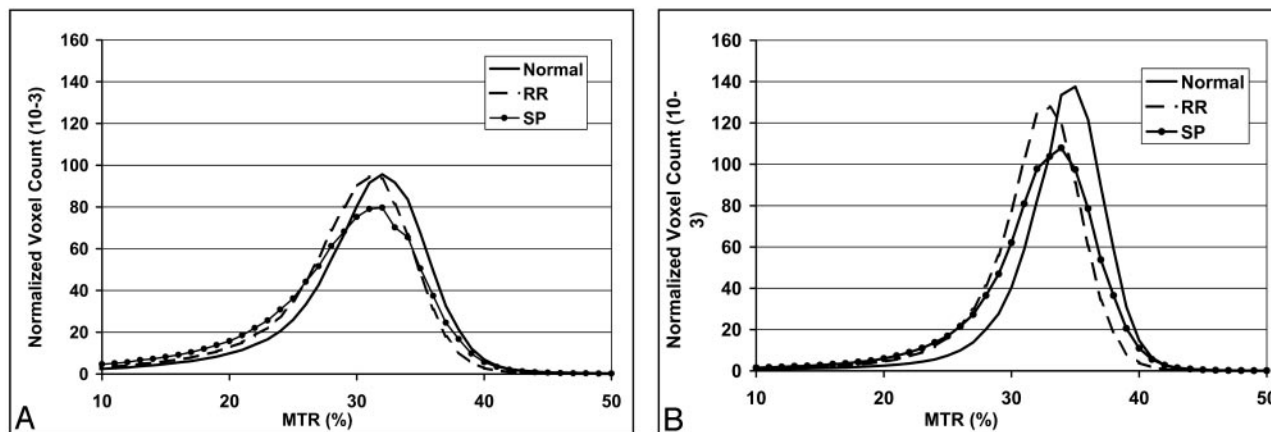
#### **Regional Differences: Region of Interest Analysis in MS**

By using the region of interest analysis, studies found that hypointense lesions had a lower MTR than isointense le-

sions,<sup>54</sup> the central portion of ring-enhancing lesions had a lower MTR than homogeneously enhancing lesions,<sup>55</sup> and demyelinating lesions had a lower MTR than inflammatory lesions (edema).<sup>47</sup> In addition, the perilesional MTR is lower than that of the remote region.<sup>56</sup> The MTR in dirty-appearing white matter is lower than that of NAWM but higher than that of lesions.<sup>57</sup> Finally, the MS lesions usually have a more reduced MTR as compared with ischemic lesions in small vessel diseases.<sup>58,59</sup> These results suggest that MTI may increase the specificity of MR imaging in assessing the extent of demyelination or residual myelination of MS lesions.

Subtle pathologic changes are known to occur in the NAWM in patients with MS, which are not visible on conventional MR imaging but may represent a significant component of disease burden. MTI is sensitive in detecting not only the MS plaques, but also NAWM abnormalities.<sup>60</sup> The mean MTR was found to be significantly lower in many NAWM regions for MS patients than for normal controls.<sup>61,62</sup> Such MR imaging occult lesions in NAWM may involve low-grade burned demyelination, perivascular infiltration, axonal loss, and oligodendrocyte loss.<sup>63</sup> More interesting, several longitudinal studies<sup>64–66</sup> of lesion evolution have shown that the areas of





**Fig 4.** Averaged magnetization transfer ratio histograms from 3 groups (healthy control, RRMS, and SPMS) for global NAGM (A) and NAWM (B) tissues. Lower normalized peak height in SPMS population indicates relatively less residual normal brain tissue compared with that in RRMS patients.

NAWM that have a progressive, marked decline of the MTR will eventually develop into the new lesions on conventional MR imaging. The significant decline of the MTR at the onset of lesion development, however, can have a temporary profile of recovery after the new lesion is formed<sup>67</sup> and then subsequently experience a progressive decline as the lesion ages.<sup>65</sup> This temporary increase of the MTR is possibly associated with the dynamic inflammatory changes (eg, edema). Further, MTR might be a potential biologic marker for remyelination, an important repair process involving newly formed thin myelin that is now known to frequently occur in MS. A postmortem study has shown that the MTR in remyelinated lesions differs from the MTR in both NAWM and demyelinated lesions.<sup>68</sup>

#### Global Assessment: MTR Histogram Analysis

MTI can also play an important role in assessing the disease burden by applying an MTR histogram based on whole brain tissue (so-called volumetric histogram analysis) as introduced by van Buchem et al.<sup>69</sup> The global MTR histogram allows for the evaluation of data from all pixels of the brain tissue (ie, parenchyma, gray matter, white matter), and therefore provides a more complete picture of disease burden, including the substantial occult pathology in NAWM. This is achieved by the registration and transformation of an MTR parameter map onto a segmented tissue map. The global analysis is particularly useful in assessing diseases with a diffuse nature such as MS, because such quantitative analysis can also be performed longitudinally to monitor disease progression or treatment efficacy. MTR histogram-derived measures including mean, peak position, and peak height appeared significantly different in MS patients as compared with normal controls.<sup>69-71</sup> The characteristics of the MTR histogram also differ between the various clinical forms of MS.<sup>71,72</sup> Several studies have found a correlation between global MTR histogram metrics and neurocognitive impairment,<sup>70,71,73</sup> which indicates that global MTR histogram analysis is sensitive to clinical changes in neurocognitive functions.

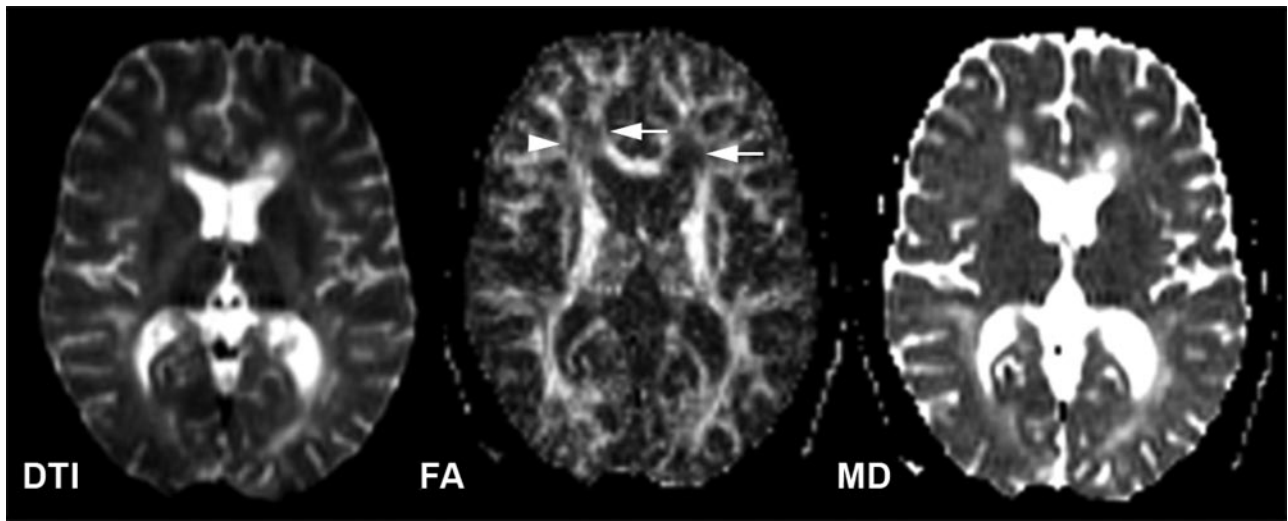
Classically, MS is defined as a white matter disease; however, evidence from both imaging and histopathologic studies increasingly shows that gray matter is not spared from the disease.<sup>74-76</sup> Because gray matter and white matter differ both

anatomically and functionally, lesions in these 2 tissues are also different regarding their imaging and histopathologic features.<sup>5,75</sup> When measured globally, there are significant differences in the MTR histogram metrics for both normal-appearing gray matter (NAGM) and NAWM between patients and normal controls (Fig 4).<sup>24,76</sup> The cerebral T2 lesion load tended to have a negative correlation with the MTR histogram measures for global NAGM only,<sup>24</sup> which indicates the effects of retrograde neurodegeneration from distal white matter lesions on cortical gray matter. The MTR abnormalities in NAWM, however, may arise from a primary demyelinating process that is independent of the lesions. In addition, the changes of the MTR in normal-appearing brain tissues also differ between MS phenotypes (Fig 4)<sup>24</sup> and show different rates of progression.<sup>73</sup> The separate analysis of gray and white matter may allow for the improved detection of underlying subtle tissue abnormalities as well as a better understanding of the natural history of MS disease.

Compared with conventional MR imaging, MTI has shown increased pathologic specificity and high sensitivity to NAWM abnormalities. Therefore, MTI offers a unique, noninvasive tool for imaging myelin disorder, remyelination process, and occult pathology in MS.

#### Diffusion Tensor Imaging

Water molecule self-diffusion, referring to the microscopic random motion in biologic tissues, provides the basis of the modern picture of diffusion-weighted imaging (DWI). When water diffusion is measured for a complex medium, the diffusion coefficient of biologic tissue is lower than that in free liquid, and hence an “apparent diffusion coefficient” (ADC) is actually measured. In tissues, such as white matter, molecular movement is not the same in all directions (so-called anisotropy) due to the structural barrier within the fiber tracts, leading to an orientation-dependent diffusion property. DTI is acquired with diffusion weighting gradients in at least 6 non-collinear directions that allows for the construction of a tensor.<sup>77</sup> The tensor can be used to produce images of both mean diffusivity (MD) and fractional anisotropy (FA), which demonstrate voxel-by-voxel differences in the magnitude and directionality of water diffusion, respectively. Therefore, DTI may provide information about tissue microstructure and ar-



**Fig 5.** DTI (left,  $b = 0$ ), FA (middle), and MD (right) maps of a 31-year-old female patient with RRMS. The decreased value of FA and increased value of MD for the lesions (arrows) are shown in their maps. Note that the decreased FA (arrowhead) in some white matter areas is probably due to fiber crossing.

chitecture including size, shape, and organization<sup>78</sup> and in turn constitutes a proved and effective quantitative method for evaluating tissue integrity at a microscopic molecular level. In addition, the information provided by FA can also serve as the basis for fiber tractography,<sup>79</sup> a method to determine the pathways of anatomic white matter connectivity.

#### **Regional Differences: Region of Interest Analysis in MS**

MS lesions are pathologically heterogeneous<sup>80</sup> and also show highly variable values of diffusion indices. In general, lesions have an increased MD or ADC and decreased FA when compared with the contralateral NAWM or normal white matter (Fig 5),<sup>81</sup> which indicates the disruption of myelin and axonal structures that leads to disorganization and increased extracellular space. The increased values of the MD in MS lesions have been confirmed in studies of EAE.<sup>82,83</sup> The highest diffusion values (MD), however, appear to be found in hypointense lesions as compared with enhancing lesions and isointense lesions,<sup>84-86</sup> representing the long-standing destructive damage in the hypointense lesions<sup>87</sup> where water diffusion is most mobile or least restricted; however, the findings of whether enhancing lesions differ from nonenhancing lesions in terms of their ADC are inconsistent,<sup>84-86,88</sup> though FA is always lower in enhancing than in nonenhancing lesions.<sup>89-91</sup> This may suggest that the inflammatory effects (eg, edema) have a more variable impact on the ADC or MD than on FA, and that the BBB breakdown may also vary during this temporarily active period. In addition, FA is found to be markedly reduced in ring-enhancing lesions compared with homogenous enhancing lesions.<sup>88</sup> Because lesions in SPMS are often old and exhibit extensive tissue destruction, studies also reported a larger degree of changes in the MD and FA of such lesions as compared with those found in RRMS.<sup>87</sup>

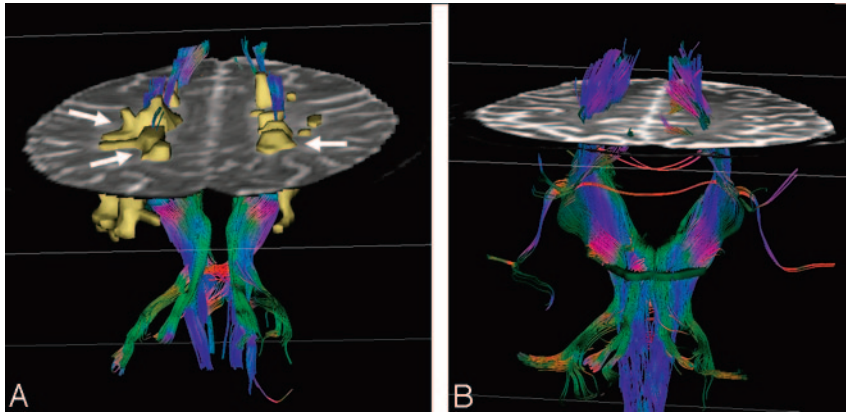
Studies of DTI in NAWM have also revealed a decreased FA and an increased MD in different regions,<sup>81</sup> which is in agreement with findings from MTR studies and suggests the presence of subtle microstructural changes (eg, the loss of barriers) in the NAWM that are beyond the resolution of conventional MR imaging. DTI abnormalities in NAWM tend to be more

severe in the periplaque regions.<sup>92</sup> Several studies, however, did not show abnormalities of DTI indices in NAWM in early MS.<sup>93,94</sup> One study of DTI<sup>95</sup> showed significant water diffusion changes in the normal-appearing corpus callosum (NACC) in a group of patients with early MS; however, such significant abnormalities were not observed in other NAWM regions, which suggests a preferential occult injury of the corpus callosum in MS. The diffusion abnormalities of the corpus callosum also correlated with the cerebral lesion load,<sup>95</sup> which is probably due to the accumulative bridging effects of the corpus callosum that result in the wallerian degenerative changes from the connecting distal white matter plaques.<sup>96</sup> This is in agreement with a recent quantitative postmortem study<sup>97</sup> which showed a significant reduction in axonal attenuation or the total number of axons passing through the areas of corpus callosum that grossly appeared normal in MS.

In certain regions of NAWM, however, FA can be very low in the areas of fiber crossing, therefore, may not be a reliable marker for the diffusional abnormalities. By calculating the eigenvalues in different directions or by quantifying the radial diffusivity in a fiber tract region with known orientation, Song et al showed in an animal model the potential of DTI in differentiating myelin loss and axonal injury,<sup>98</sup> which should be validated with human data, given that such detailed and accurate information of axonal preservation in demyelinating lesions is clinically relevant in understanding disease severity and guiding treatment.

#### **Global Analysis of the DTI Histogram**

In MS, methods for quantifying the disease burden are always desirable to monitor disease progression and assess the efficacy of new drugs.<sup>99</sup> As with MTI,<sup>69</sup> DTI can also be assessed globally by using a histogram analysis, which also showed a significant difference between patients and controls.<sup>100</sup> Substantial clinical correlations between DTI findings and clinical disability were found in recent studies by using a histogram analysis of global or large amounts of tissue<sup>101,102</sup> but were not found in earlier studies based on region of interest analyses.<sup>84,85</sup> The involvement of gray matter is also indicated by



**Fig 6.** Fiber tractography in a patient with MS (A) and a healthy volunteer (B). All the MS plaques (arrows) were marked and constructed in 3D. Note the reduced number of fibers when they traverse white matter lesions in the patient.

DTI studies, and the abnormalities are shown to be greater in the progressive form of MS.<sup>103,104</sup> A moderate correlation between cognitive impairment and gray matter MD was observed in patients with RRMS, which suggests that DTI may reflect the severity of the linguistic, attention, and memory deficits due to the disruption of cortical function in these patients.<sup>104</sup>

### Fiber Tractography in MS

Recently, there has been interest in using fiber tractography obtained from DTI datasets to characterize white matter tract directionality and integrity in central nervous system (CNS) diseases. Recent experimental work<sup>105</sup> has demonstrated that the fiber tract disruption caused by the transection of lesions can be directly visualized on fiber tractography (Fig 6). Compared with NAWM, these lesions were associated with significantly fewer fiber tracts and lower FA.<sup>106</sup> Because MS lesions often occur in the white matter pathway, by using DTI tractography we have observed fewer fibers generated in the corticospinal tract at the brain stem level in patients with a higher cerebral lesion load than in patients with a lower lesion load.<sup>105</sup> The observation that fiber tract loss in the corticospinal tract is associated with distal upstream lesions supports the concept of wallerian degeneration and axonal transection in MS disease.<sup>107</sup> It should be noted, however, that, though the number of fibers can be quantified via tractography, this depends on the FA threshold and the degree of the trajectory angle provided. With continued advances and additional clinical applications, fiber tractography should play a vital role in not only the identification of tracts of interest, but also the quantification of the degree of axonal loss and demyelination within a specific white matter tract. This would improve the specificity of MR in monitoring the disease progression of motor and cognitive deficits in MS.

### Perfusion Imaging

Because it has long been noted that vascular inflammation in the brain is the critical event in the pathogenesis of MS, there has been an increasing interest in studying the microvascular abnormalities in MS by using advanced MR imaging. The assessment of brain hemodynamics, including cerebral blood flow (CBF), cerebral blood volume (CBV), and mean transit time (MTT) is now possible by applying dynamic susceptibility contrast MR imaging (DSC-MR imaging), a technique that is being used more widely in clinical practice for measuring

blood perfusion. Studies by using DSC-MR imaging demonstrate a significantly decreased CBF and prolonged MTT in periventricular regions of NAWM in patients with MS compared with controls.<sup>108</sup> The diminished perfusion in NAWM is supported by the histopathologic evidence and may indicate that MS has a primary vascular pathogenesis. The frequent edematous onion-skin changes on the vein wall and vascular occlusion have been documented in the early pathologic studies.<sup>109,110</sup> Recent work based on modern histopathologic techniques also demonstrates the hypoxia-like tissue injury<sup>111</sup> or thrombosis of small veins.<sup>112</sup>

Studies of MS lesions by using perfusion MR imaging have also shown evidence of hemodynamic abnormalities<sup>113-115</sup> including the increased CBV in acute lesions, which suggests that microcirculation may be modulated by inflammation or acute hypoxia. In a study by Wuerfel et al,<sup>114</sup> the altered local perfusion changes can be detected before the disruption of the BBB and new lesion formation. By detecting various lesion types, Ge et al<sup>115</sup> found not only enhancing lesions, but also some chronic nonenhancing lesions showing increased perfusion, which may indicate lesion reactivity or renewed inflammatory changes, which are also before BBB breakdown and not visible on conventional MR imaging. These findings are important in that hemodynamic abnormality is a significant component in the pathophysiology of MS lesions. Perfusion imaging may have a predictive role of lesion reactivity and/or new lesion formation and, therefore, has the potential to predict disease activity, and monitor disease progression or the effects of therapy.

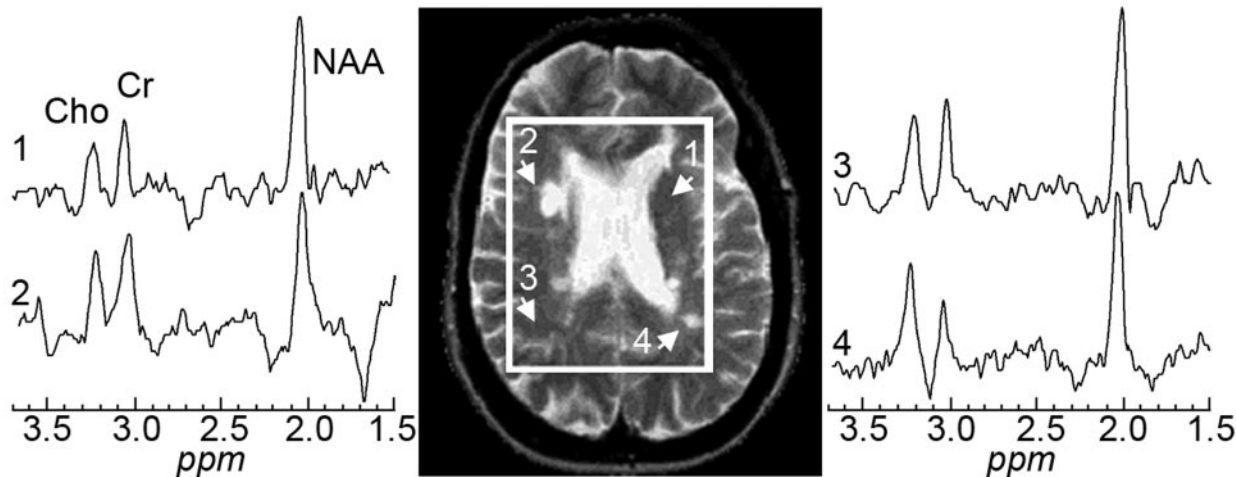
### <sup>1</sup>H-MR Spectroscopy

The recent development of <sup>1</sup>H-MR spectroscopy has enabled the in vivo study of certain chemical compounds or metabolites in a variety of pathologic processes that affect the CNS. As a noninvasive adjunct to MR imaging, <sup>1</sup>H-MR spectroscopy offers potentially unique insights into the histopathology of MS.

### Localized <sup>1</sup>H-MR Spectroscopy

In MS lesions, the most common and remarkable finding is the reduction of the *N*-acetylaspartate (NAA) peak (Fig 7) compared with other metabolites. In acute active lesions, the initial reduction of NAA at the onset of lesion development can be partially restored after the acute phase on serial MR spectroscopy studies,<sup>116,117</sup> which suggests that the decrease in the values of NAA does not necessarily imply permanent neuronal and axonal loss. The recovery of NAA may be related to the resolution of edema or neuronal dysfunction recovery. Choline (Cho) is found to be increased in the acute pathologic phase,<sup>118</sup> which may be associated with the release of membrane compounds during active myelin breakdown, resulting





**Fig 7.** Axial T2-weighted (TE/TR = 90/2500 msec) image of a 26-year-old woman MS patient superimposed with the MR spectroscopy volume of interest. Spectra from 2 lesions (2 and 4) and 2 contralateral NAWM regions (1 and 3) are shown on common intensity and chemical shift (ppm) scales.

in an increase of phosphocholine and glycerol-phosphocholine. In addition, a higher concentration of lactate may also be observed in the acute phase and is possibly related to the inflammatory or ischemic condition.<sup>119,120</sup> After careful exclusion of the spectral of lipid contamination, prominent resonances presumably originating in lipids or fatty acids may also be observed in the earlier stage of the disease,<sup>121,122</sup> indicating the breakdown of myelin and phospholipids due to active inflammation. Elevated concentrations of myo-inositol in MS plaques but not in other age-related white matter lesions may be observed and are thought to be of special interest for their differentiation.<sup>123</sup> The regional changes in all of these metabolite levels, however, have been observed to be dynamic and variable over time in MS,<sup>124</sup> and, as result, careful interpretation of the MR spectroscopy data is needed, depending on technical and physiologic conditions.

<sup>1</sup>H-MR spectroscopy can detect the biochemical alteration of metabolites in NAWM adjacent to or distant from lesions in MS. The extent of NAA decrease and Cho increase in NAWM may progress over time into new lesion<sup>125,126</sup> or lead to wallerian degeneration in certain white matter tracts.<sup>127</sup> In a study of clinical trials, patients with treatment showed a large increase of NAA/creatine (Cr) (71%) in NAWM during the 2 years of treatment, whereas NAA/Cr decreased (8.9%) in patients without treatment.<sup>128</sup> Taken together, NAA appears to be a sensitive marker for detecting axonal dysfunction in NAWM and is valuable in monitoring the therapeutic effects.

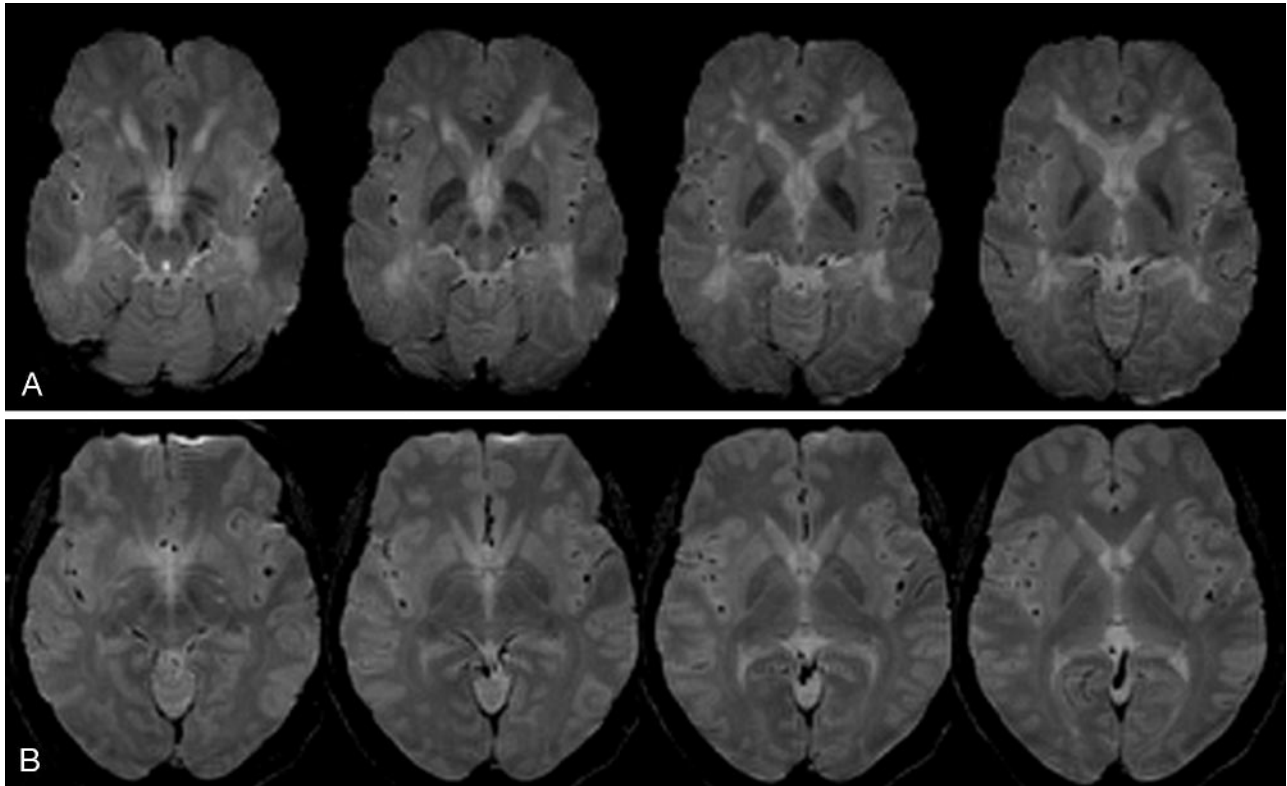
#### Global <sup>1</sup>H-MR Spectroscopy

Despite the potential benefits of localized <sup>1</sup>H-MR spectroscopy, its current form has certain limitations, including the diversity of neuroanatomic locations, the normal variation of chosen tissues, partial coverage, and serial data misalignment. To solve these problems, a nonlocalized <sup>1</sup>H-MR spectroscopy sequence has been developed for quantifying whole-brain NAA (WBNA) concentrations,<sup>129</sup> which may be more likely to reflect the total axonal/neuronal dysfunction. A comparison study showed significantly lower WBNA in patients with RRMS compared with age-matched controls,<sup>129</sup> and such a decline may vary in patients according to their particular NAA

concentration dynamics,<sup>130</sup> which suggests that WBNA might allow for the prediction of disease course, as well as reflect disease severity and improve clinical trial efficiency by enabling the selection of candidates on the basis of WBNA dynamics in addition to clinical status. Measures of WBNA were also compared with whole brain atrophy in a group of patients with RRMS to explore the relationship between WBNA loss and brain atrophy. Patients exhibited a 3.6-fold faster rate of loss of WBNA than the rate of loss of brain tissue as measured by fractional parenchyma volume, which suggests that neuronal/axonal dysfunction (NAA decline) may precede rather than follow parenchyma loss in MS.<sup>131</sup>

#### MR Imaging of Basal Ganglia Affected by MS

Gray matter, especially deep gray matter in the basal ganglia, is found to be associated with the presence and severity of various neurocognitive disabilities in MS.<sup>74</sup> Hyperintense lesions are not often seen in basal ganglia nuclei and the thalamus in MS. Conversely, abnormal hypointensities have indeed been observed on conventional T2 imaging.<sup>132</sup> The reduced signal intensities may occur in all ferruginated neurons (Fig 8), which includes globus pallidus, putamen, caudate nucleus, substantia nigra, red nucleus, and thalamus. This is thought to be related to excessive iron deposition, which may cause injury because of oxidative stress. Using a newly developed method, magnetic field correlation (MFC), for iron quantification, one study found that MS patients had a significantly increased iron deposition in the basal ganglia, even in those cases with minimum signal intensity changes on conventional MR imaging,<sup>133</sup> which suggests that MFC imaging is sensitive in quantitatively detecting subtle iron accumulation. Such excessive iron can cause oxidative tissue injury through the formation of free radicals and the initiation of peroxidation with potential implications for clinically observed functional impairment. The exact mechanism for excessive iron deposition in the basal ganglia, particularly in iron-rich ferruginated neurons, remains unclear, though it may be associated with the



**Fig 8.** Axial gradient-echo imaging in a 29-year-old patient with MS (A) and a 34-year-old healthy volunteer (B). Greater hypointense signal intensities, which may be associated with excessive iron deposition, are seen in all ferruginated neurons in a patient compared with a healthy volunteer.

interruption of the iron transport pathway or a hypoxia-induced iron increase.

### Spinal Cord Imaging in MS

The spinal cord is known to be frequently involved in MS or in combination with lesions in the brain. As many as 25% of cases have been found to involve only the spinal cord.<sup>134,135</sup> Most spinal cord lesions occur in the cervical cord. Cervical spinal MR imaging is particularly useful when the patient is suspected to have MS and brain lesions are absent. On T2WI spinal imaging, most plaques are peripherally located (commonly dorsolateral) and less than 2 vertebral body segments in length.<sup>135</sup> The lesions tend to be multifocal and present as well-circumscribed foci with an increased T2 signal intensity. With acute spinal cord lesions, enhancement is frequently seen. Spinal cord atrophy, which may reflect axonal loss, may also be observed and is believed to be an important element in disability.<sup>136</sup> Though rarely seen in other diseases, asymptomatic lesions of the spinal cord can be present in MS and may help lead to the correct diagnosis.<sup>137</sup>

Relative to brain imaging, spinal imaging is more challenging because of the regional complex structures of the spine and intrinsic cord motion. Although fast spin-echo remains the preferred imaging technique, it may miss subtle lesions<sup>138</sup> and has been shown to be less sensitive than MT-prepared gradient echo and fast STIR sequences.<sup>139</sup> Unlike its applicability to the brain, FLAIR imaging appears unreliable in the detection of MS lesions in the spinal cord.<sup>140</sup> In recent postmortem MR imaging studies, cord abnormalities appeared more diffuse and marked despite their minute appearance on conventional MR imaging.<sup>141</sup> During the past several years, quantitative MR

imaging techniques have been applied to the spinal cord in an attempt to improve the detection of cord lesions and quantify the severity of tissue injury in lesions and a normal-appearing spinal cord. Several studies involving DTI have shown a significantly increased MD and decreased FA in a cross-sectional area of the cervical spinal cord in patients relative to controls.<sup>142,143</sup> DTI abnormalities in normal-appearing spinal cords are found to be more prominent in the lateral and posterior regions of the cord.<sup>143</sup> In addition, with advanced MTI and optimized sequences, subtle cord abnormalities were also detected in established MS<sup>144</sup>; this is not the case for patients with clinical isolated syndrome by using regular MTI.<sup>145</sup> As faster and more advanced alternative techniques emerge in the clinical setting, spinal cord imaging will become more widely used in both the diagnosis and follow-up of MS and help monitor the disease progression and therapeutic effects.

### High-Field MR Imaging and MS

High-field ( $\geq 3$ T) MR systems have been increasingly installed worldwide in recent years. It is important to note that continued advances in higher field strength with the leading edge technology may be applicable to both the clinical practice and the basic science research of CNS diseases including MS. One of the most obvious advantages of high-field imaging is the high signal intensity-to-noise ratio (SNR) that can be achieved. A higher SNR allows for thinner sections and higher-resolution matrices, which can improve the detection of lesions.<sup>15</sup> The lesion counts can be 45% higher on a 4T system with better appreciation of tissue heterogeneity within lesions as compared with a 1.5T system. With higher resolution and increased contrast, high field also has the potential to detect cortical lesions, which are often obscure at



**Table 1: MR imaging characteristics in multiple sclerosis**

Methods	Classic Imaging Features
Conventional MRI	Multiple lesions: periventricular > peripheral Ovoid shape Dilated perivascular space Optic nerve, U fiber, and callosal involvement Generalized atrophy at relatively younger age Enhancing lesions (ring, rim, or solid) Gradually increased number of lesions
MTR	Decrease in lesions Decrease in NAWM—precede new lesion Lower in nonenhancing than in enhancing lesions Lower in ischemic than in demyelinating lesions Lowest in the core of ring enhancing lesion Lower in gray matter than in white matter
DTI	Higher MD and lower FA in lesions than in NAWM Higher MD and lower FA in NAWM than in normal white matter Not reliable to differentiate enhancing and nonenhancing lesions Not significant in NAWM in early stage of disease Visualization of specific fiber tract on tractography
Perfusion imaging	Decreased CBF and CBV in general Locally increased CBV in enhancing lesions Locally increased CBV in some chronic lesions
<sup>1</sup> H-MR spectroscopy	Marked decrease of NAA level Increase of choline Presence of lipid
Spinal imaging	Multiple lesions Cervical spinal cord (peripherally located) Asymptomatic lesions Less than 2 vertebral bodies in length Focal atrophy

**Note:**—MTR indicates magnetization transfer ratio; DTI, diffusion tensor imaging; <sup>1</sup>H-MR spectroscopy, proton MR spectroscopy; NAWM, normal appearing white matter; MD, mean diffusivity; FA, fractional anisotropy; CBF, cerebral blood flow; CBV, cerebral blood volume; NAA, *N*-acetylaspartate.

conventional field strength. All of these improvements may allow for the earlier diagnosis of MS, especially in those patients who clinically are suspected to have the disease.

Another notable benefit of using high-field strength is that the susceptibility (T2\*) effects are boosted, which improves the examination of microscopic venous structures, brain iron, and microbleeds in the CNS diseases. The enhanced visualization of microvasculature in brain tumors has been shown at higher strength.<sup>146</sup> In MS, the distribution of lesions usually follows a perivenous origin<sup>2</sup>; therefore, the relationship between microvascular abnormalities and lesions<sup>147</sup> will be more appreciated at higher field. The enhanced T2\* effects are also beneficial for dynamic contrast-enhanced perfusion MR imaging and functional MR imaging due to the increased resolution and conspicuity of paramagnetic contrast agents and deoxyhemoglobin. However, the susceptibility-induced signal intensity loss and distortion near the skull base and air sinuses are also prominent at higher field strengths and should be carefully considered in clinical applications. In addition, with the improved sequence and design of the RF coil, the advantages of performing MR spectroscopy at higher field strengths should also achieve increased SNR for more detailed compounds that are obscured at 1.5T.<sup>148</sup> Thus, with the appropriate optimizations, high-field MR imaging will further strengthen the role of MR imaging in the study of MS.

## Conclusions

In the past 2 decades, MR imaging has brought about dramatic changes in the clinical evaluation of a host of neurologic disorders. The application of MR imaging to MS is a well-recognized example with regard to the impact of MR imaging on MS, including diagnosis, natural history, and therapeutic monitoring. Several new imaging terms/concepts that have been developed through the study of MS—including “lesion

**Table 2: Summary of MR imaging in multiple sclerosis**

Method	Present Role	Future Direction
Conventional MRI	Routine for diagnosis and disease evaluation High sensitivity, less specificity MRI inflammatory activity (often clinically silent)	Increase detectability for gray matter lesions, especially using high-resolution imaging of high-field MRI
Volumetric MRI	Quantitation of disease burden Natural history and clinical trials (lesion load) Global adverse outcome of pathology (atrophy)	Provide quick, friendly, and reliable routine measures for monitoring follow-up and treatment efficacy
MTI	Injury in NAWM. Increased specificity for myelin Extent of demyelination in lesion and NAWM Improved correlation with neurocognitive outcome	Apply to evaluation of remyelination and efficacy of various disease modifying treatments
DTI	Injury in NAWM. Water diffusion abnormality Uncertain role of demyelination from inflammation Global net loss of structural organization Identification of specific white matter tract (integrity and directionality)	(1) Distinguish axonal and myelin loss by quantifying the axial radial diffusivity (2) Improve the sensitivity and specificity of underlying diffusion changes (3) Further explore fiber tractography in multiple sclerosis
DSC-MRI	Predict lesion activity and provide additional information of microvascular abnormality	Explore the ischemic pathogenetic mechanism in certain types of multiple sclerosis lesions
<sup>1</sup> H-MR spectroscopy	New insights into the in vivo biochemical pathology  Marked changes in NAA, not other metabolites Global marker of neuronal/axonal dysfunction	(1) Improve the reliability and applicability in clinical trials  (2) Increase specificity of other metabolites

**Note:**—MTI indicates magnetic tensor imaging; DTI, diffusion tensor imaging; DSC-MRI, dynamic susceptibility contrast MR imaging; <sup>1</sup>H-MR spectroscopy, proton MR spectroscopy; NAWM, normal appearing white matter; NAA, *N*-acetylaspartate.

load,” “NAWM,” “MTR,” and “WBNA” —are now widely used in the evaluation of many other CNS diseases. MS is a challenging disease in all aspects ranging from etiology to diagnosis and treatment. It is also a disease that has greater heterogeneity in terms of clinical forms, imaging appearance, and treatment response. With the ever-advancing technology, MR imaging will certainly further improve our understanding of the MS disease and continue to play an extremely important role going forward. Table 1 lists characteristic imaging findings of MS. Table 2 summarizes the current and future role of MR imaging in MS.

### Acknowledgments

This work was supported by grants R37 NS 29029-11 from the National Institutes of Health and NCRR M01 RR00096 (GCRC). Special thanks to Dr. Robert Grossman for the generous support of this work and the academic training over the years, and to Jennifer Mandell for manuscript preparation.

### References

- Horowitz AL, Kaplan RD, Grewe G, et al. **The ovoid lesion: a new MR observation in patients with multiple sclerosis.** *AJNR Am J Neuroradiol* 1989;10:303–05
- Ge Y, Law M, Herbert J, et al. **Prominent perivenular spaces in multiple sclerosis as a sign of perivascular inflammation in primary demyelination.** *AJNR Am J Neuroradiol* 2005;26:2316–19
- Adams CW, Abdulla YH, Torres EM, et al. **Periventricular lesions in multiple sclerosis: their perivenous origin and relationship to granular ependymitis.** *Neuropathol Appl Neurobiol* 1987;13:141–52
- Paolillo A, Giugni E, Bozzao A, et al. **[Fast spin echo and fast fluid attenuated inversion recovery sequences in multiple sclerosis].** *Radiol Med (Torino)* 1997;93:686–91
- Bo L, Vedeler CA, Nyland H, et al. **Intracortical multiple sclerosis lesions are not associated with increased lymphocyte infiltration.** *Mult Scler* 2003;9:323–31
- Tien RD, Hesselink JR, Szumowski J. **MR fat suppression combined with Gd-DTPA enhancement in optic neuritis and perineuritis.** *J Comput Assist Tomogr* 1991;15:223–27
- Onofri M, Tartaro A, Thomas A, et al. **Long echo time STIR sequence MRI of optic nerves in optic neuritis.** *Neuroradiology* 1996;38:66–69
- Truyen L, van Waesberghe JH, van Walderveen MA, et al. **Accumulation of hypointense lesions (“black holes”) on T1 spin-echo MRI correlates with disease progression in multiple sclerosis.** *Neurology* 1996;47:1469–76
- Grossman RI, Braffman BH, Brorson JR, et al. **Multiple sclerosis: serial study of gadolinium-enhanced MR imaging.** *Radiology* 1988;169:117–22
- Kermode AG, Tofts PS, Thompson AJ, et al. **Heterogeneity of blood-brain barrier changes in multiple sclerosis: an MRI study with gadolinium-DTPA enhancement.** *Neurology* 1990;40:229–35
- He J, Grossman RI, Ge Y, et al. **Enhancing patterns in multiple sclerosis: evolution and persistence.** *AJNR Am J Neuroradiol* 2001;22:664–69
- Guttmann CR, Ahn SS, Hsu L, et al. **The evolution of multiple sclerosis lesions on serial MR.** *AJNR Am J Neuroradiol* 1995;16:1481–91
- Barkhof F, Scheltens P, Frequin ST, et al. **Relapsing-remitting multiple sclerosis: sequential enhanced MR imaging vs clinical findings in determining disease activity.** *AJR Am J Roentgenol* 1992;159:1041–47
- McDonald WI, Compston A, Edan G, et al. **Recommended diagnostic criteria for multiple sclerosis: guidelines from the International Panel on the Diagnosis of Multiple Sclerosis.** *Ann Neurol* 2001;50:121–27
- Keiper MD, Grossman RI, Hirsch JA, et al. **MR identification of white matter abnormalities in multiple sclerosis: a comparison between 1.5T and 4T.** *AJNR Am J Neuroradiol* 1998;19:1489–93
- Wolansky LJ, Bardini JA, Cook SD, et al. **Triple-dose versus single-dose gadoteridol in multiple sclerosis patients.** *J Neuroimaging* 1994;4:141–45
- Sardanelli F, Iozzelli A, Losacco C, et al. **Three subsequent single doses of gadolinium chelate for brain MR imaging in multiple sclerosis.** *AJNR Am J Neuroradiol* 2003;24:658–62
- Peterson JW, Bo L, Mork S, et al. **Transected neurites, apoptotic neurons, and reduced inflammation in cortical multiple sclerosis lesions.** *Ann Neurol* 2001;50:389–400
- Simon JH, Scherzinger A, Raff U, et al. **Computerized method of lesion volume quantitation in multiple sclerosis: error of serial studies.** *AJNR Am J Neuroradiol* 1997;18:580–82

- Ge Y, Grossman RI, Udupa JK, et al. **Glatiramer acetate (Copaxone) treatment in relapsing-remitting MS: quantitative MR assessment.** *Neurology* 2000;54:813–17
- Oliveri RL, Valentino P, Russo C, et al. **Randomized trial comparing two different high doses of methylprednisolone in MS: a clinical and MRI study.** *Neurology* 1998;50:1833–36
- Panitch H, Goodin DS, Francis G, et al. **Randomized, comparative study of interferon beta-1a treatment regimens in MS: the EVIDENCE Trial.** *Neurology* 2002;59:1496–506
- McFarland HF, Stone LA, Calabresi PA, et al. **MRI studies of multiple sclerosis: implications for the natural history of the disease and for monitoring effectiveness of experimental therapies.** *Mult Scler* 1996;2:198–205
- Ge Y, Grossman RI, Udupa JK, et al. **Magnetization transfer ratio histogram analysis of normal-appearing gray matter and normal-appearing white matter in multiple sclerosis.** *J Comput Assist Tomogr* 2002;26:62–68
- Miki Y, Grossman RI, Udupa JK, et al. **Computer-assisted quantitation of enhancing lesions in multiple sclerosis: correlation with clinical classification.** *AJNR Am J Neuroradiol* 1997;18:705–10
- Filippi M, Horsfield MA, Tofts PS, et al. **Quantitative assessment of MRI lesion load in monitoring the evolution of multiple sclerosis.** *Brain* 1995;118:1601–12
- Kurtzke JF. **Rating neurological impairment in multiple sclerosis: an expanded disability status scale (EDSS).** *Neurology* 1983;1444–52
- Filippi M, Horsfield MA, Hajnal JV, et al. **Quantitative assessment of magnetic resonance imaging lesion load in multiple sclerosis.** *J Neurol Neurosurg Psychiatry* 1998;64(suppl 1):S88–93
- Miller DH, Barkhof F, Frank JA, et al. **Measurement of atrophy in multiple sclerosis: pathological basis, methodological aspects and clinical relevance.** *Brain* 2002;125:1676–95
- Dietemann JL, Beigelman C, Rumbach L, et al. **Multiple sclerosis and corpus callosum atrophy: relationship of MRI findings to clinical data.** *Neuroradiology* 1988;30:478–80
- Brex PA, Jenkins R, Fox NC, et al. **Detection of ventricular enlargement in patients at the earliest clinical stage of MS.** *Neurology* 2000;54:1689–91
- Xu J, Kobayashi S, Yamaguchi S, et al. **Gender effects on age-related changes in brain structure.** *AJNR Am J Neuroradiol* 2000;21:112–18
- Ge Y, Grossman RI, Udupa JK, et al. **Brain atrophy in relapsing-remitting multiple sclerosis and secondary progressive multiple sclerosis: longitudinal quantitative analysis.** *Radiology* 2000;214:665–70
- Fox NC, Jenkins R, Leary SM, et al. **Progressive cerebral atrophy in MS: a serial study using registered, volumetric MRI.** *Neurology* 2000;54:807–12
- Kalkers NF, Ameziene N, Bot JC, et al. **Longitudinal brain volume measurement in multiple sclerosis: rate of brain atrophy is independent of the disease subtype.** *Arch Neurol* 2002;59:1572–76
- Ge Y, Grossman RI, Babb JS, et al. **Age-related total gray matter and white matter changes in normal adult brain. Part I. Volumetric MR imaging analysis.** *AJNR Am J Neuroradiol* 2002;23:1327–33
- Ge Y, Grossman RI, Udupa JK, et al. **Brain atrophy in relapsing-remitting multiple sclerosis: fractional volumetric analysis of gray matter and white matter.** *Radiology* 2001;220:606–10
- Evangelou N, Konz D, Esiri MM, et al. **Regional axonal loss in the corpus callosum correlates with cerebral white matter lesion volume and distribution in multiple sclerosis.** *Brain* 2000;123:1845–49
- Leigh R, Ostuni J, Pham D, et al. **Estimating cerebral atrophy in multiple sclerosis patients from various MR pulse sequences.** *Mult Scler* 2002;8:420–29
- Rao AB, Richert N, Howard T, et al. **Methylprednisolone effect on brain volume and enhancing lesions in MS before and during IFNbeta-1b.** *Neurology* 2002;59:688–94
- Sastre-Garriga J, Ingle GT, Chard DT, et al. **Grey and white matter volume changes in early primary progressive multiple sclerosis: a longitudinal study.** *Brain* 2005;128:1454–60
- Dalton CM, Chard DT, Davies GR, et al. **Early development of multiple sclerosis is associated with progressive grey matter atrophy in patients presenting with clinically isolated syndromes.** *Brain* 2004;127:1101–07
- Molyneux PD, Kappos L, Polman C, et al. **The effect of interferon beta-1b treatment on MRI measures of cerebral atrophy in secondary progressive multiple sclerosis: European Study Group on Interferon Beta-1b in Secondary Progressive Multiple Sclerosis.** *Brain* 2000;123:2256–63
- Rudick RA, Fisher E, Lee JC, et al. **Brain atrophy in relapsing multiple sclerosis: relationship to relapses, EDSS, and treatment with interferon beta-1a.** *Mult Scler* 2000;6:365–72
- Kalkers NF, Bergers E, Castelijns JA, et al. **Optimizing the association between disability and biological markers in MS.** *Neurology* 2001;57:1253–58
- Grossman RI. **Magnetization transfer in multiple sclerosis.** *Ann Neurol* 1994;36(suppl):S97–99
- Dousset V, Grossman RI, Ramer KN, et al. **Experimental allergic encephalomyelitis and multiple sclerosis: lesion characterization with magnetization transfer imaging.** *Radiology* 1992;182:483–91
- Grossman RI, Gomori JM, Ramer KN, et al. **Magnetization transfer: theory and clinical applications in neuroradiology.** *Radiographics* 1994;14:279–90

49. Ge Y, Grossman RI, Babb JS, et al. Age-related total gray matter and white matter changes in normal adult brain. Part II. Quantitative magnetization transfer ratio histogram analysis. *AJNR Am J Neuroradiol* 2002;23:1334–41
50. Brochet B, Dousset V. Pathological correlates of magnetization transfer imaging abnormalities in animal models and humans with multiple sclerosis. *Neurology* 1999;53(5 suppl 3):S12–17
51. Engelbrecht V, Rassek M, Preiss S, et al. Age-dependent changes in magnetization transfer contrast of white matter in the pediatric brain. *AJNR Am J Neuroradiol* 1998;19:1923–29
52. van Buchem MA, Steens SC, Vrooman HA, et al. Global estimation of myelination in the developing brain on the basis of magnetization transfer imaging: a preliminary study. *AJNR Am J Neuroradiol* 2001;22:762–66
53. Barkovich AJ, Kjos BO, Jackson DE Jr, et al. Normal maturation of the neonatal and infant brain: MR imaging at 1.5 T. *Radiology* 1988;166:173–80
54. Loevner LA, Grossman RI, McGowan JC, et al. Characterization of multiple sclerosis plaques with T1-weighted MR and quantitative magnetization transfer. *AJNR Am J Neuroradiol* 1995;16:1473–79
55. Petrella JR, Grossman RI, McGowan JC, et al. Multiple sclerosis lesions: relationship between MR enhancement pattern and magnetization transfer effect. *AJNR Am J Neuroradiol* 1996;17:1041–49
56. Guo AC, Jewells VL, Provenzale JM. Analysis of normal-appearing white matter in multiple sclerosis: comparison of diffusion tensor MR imaging and magnetization transfer imaging. *AJNR Am J Neuroradiol* 2001;22:1893–900
57. Ge Y, Grossman RI, Babb JS, et al. Dirty-appearing white matter in multiple sclerosis: volumetric MR imaging and magnetization transfer ratio histogram analysis. *AJNR Am J Neuroradiol* 2003;24:1935–40
58. Mehta RC, Pike GB, Enzmann DR. Measure of magnetization transfer in multiple sclerosis demyelinating plaques, white matter ischemic lesions, and edema. *AJNR Am J Neuroradiol* 1996;17:1051–55
59. Gass A, Barker GJ, Kidd D, et al. Correlation of magnetization transfer ratio with clinical disability in multiple sclerosis. *Ann Neurol* 1994;36:62–67
60. Grossman RI, McGowan JC. Perspectives on multiple sclerosis. *AJNR Am J Neuroradiol* 1998;19:1251–65
61. Loevner LA, Grossman RI, Cohen JA, et al. Microscopic disease in normal-appearing white matter on conventional MR images in patients with multiple sclerosis: assessment with magnetization-transfer measurements. *Radiology* 1995;196:511–15
62. Filippi M, Campi A, Dousset V, et al. A magnetization transfer imaging study of normal-appearing white matter in multiple sclerosis. *Neurology* 1995;45:478–82
63. De Groot CJ, Bergers E, Kamphorst W, et al. Post-mortem MRI-guided sampling of multiple sclerosis brain lesions: increased yield of active demyelinating and (p)reactive lesions. *Brain* 2001;124:1635–45
64. Filippi M, Rocca MA, Martino G, et al. Magnetization transfer changes in the normal appearing white matter precede the appearance of enhancing lesions in patients with multiple sclerosis. *Ann Neurol* 1998;43:809–14
65. Pike GB, De Stefano N, Narayanan S, et al. Multiple sclerosis: magnetization transfer MR imaging of white matter before lesion appearance on T2-weighted images. *Radiology* 2000;215:824–30
66. Catalaa I, Grossman RI, Kolson DL, et al. Multiple sclerosis: magnetization transfer histogram analysis of segmented normal-appearing white matter. *Radiology* 2000;216:351–55
67. Silver NC, Lai M, Symms MR, et al. Serial magnetization transfer imaging to characterize the early evolution of new MS lesions. *Neurology* 1998;51:758–64
68. Barkhof F, Bruck W, De Groot CJ, et al. Remyelinated lesions in multiple sclerosis: magnetic resonance image appearance. *Arch Neurol* 2003;60:1073–81
69. van Buchem MA, Udupa JK, McGowan JC, et al. Global volumetric estimation of disease burden in multiple sclerosis based on magnetization transfer imaging. *AJNR Am J Neuroradiol* 1997;18:1287–90
70. van Buchem MA, Grossman RI, Armstrong C, et al. Correlation of volumetric magnetization transfer imaging with clinical data in MS. *Neurology* 1998;50:1609–17
71. Rovaris M, Filippi M, Falautano M, et al. Relation between MR abnormalities and patterns of cognitive impairment in multiple sclerosis. *Neurology* 1998;50:1601–08
72. Filippi M, Iannucci G, Tortorella C, et al. Comparison of MS clinical phenotypes using conventional and magnetization transfer MRI. *Neurology* 1999;52:588–94
73. Filippi M, Inglesse M, Rovaris M, et al. Magnetization transfer imaging to monitor the evolution of MS: a 1-year follow-up study. *Neurology* 2000;55:940–46
74. Catalaa I, Fulton JC, Zhang X, et al. MR imaging quantitation of gray matter involvement in multiple sclerosis and its correlation with disability measures and neurocognitive testing. *AJNR Am J Neuroradiol* 1999;20:1613–18
75. Kidd D, Barkhof F, McConnell R, et al. Cortical lesions in multiple sclerosis. *Brain* 1999;122:17–26
76. Ge Y, Grossman RI, Udupa JK, et al. Magnetization transfer ratio histogram analysis of gray matter in relapsing-remitting multiple sclerosis. *AJNR Am J Neuroradiol* 2001;22:470–75
77. Basser PJ, Mattiello J, LeBihan D. Estimation of the effective self-diffusion tensor from the NMR spin echo. *J Magn Reson B* 1994;103:247–54
78. Le Bihan D. Molecular diffusion, tissue microdynamics and microstructure. *NMR Biomed* 1995;8:375–86
79. Basser PJ, Pajevic S, Pierpaoli C, et al. In vivo fiber tractography using DT-MRI data. *Magn Reson Med* 2000;44:625–32
80. Lucchinetti C, Bruck W, Parisi J, et al. Heterogeneity of multiple sclerosis lesions: implications for the pathogenesis of demyelination. *Ann Neurol* 2000;47:707–17
81. Filippi M, Inglesse M. Overview of diffusion-weighted magnetic resonance studies in multiple sclerosis. *J Neurol Sci* 2001;186(suppl 1):S37–43
82. Heide AC, Richards TL, Alvord EC Jr, et al. Diffusion imaging of experimental allergic encephalomyelitis. *Magn Reson Med* 1993;29:478–84
83. Richards TL, Alvord EC Jr, He Y, et al. Experimental allergic encephalomyelitis in non-human primates: diffusion imaging of acute and chronic brain lesions. *Mult Scler* 1995;1:109–17
84. Droogan AG, Clark CA, Werring DJ, et al. Comparison of multiple sclerosis clinical subgroups using navigated spin echo diffusion-weighted imaging. *Magn Reson Imaging* 1999;17:653–61
85. Filippi M, Iannucci G, Cercignani M, et al. A quantitative study of water diffusion in multiple sclerosis lesions and normal-appearing white matter using echo-planar imaging. *Arch Neurol* 2000;57:1017–21
86. Roychowdhury S, Maldjian JA, Grossman RI. Multiple sclerosis: comparison of trace apparent diffusion coefficients with MR enhancement pattern of lesions. *AJNR Am J Neuroradiol* 2000;21:869–74
87. Castriota-Scanderbeg A, Tomaiuolo F, Sabatini U, et al. Demyelinating plaques in relapsing-remitting and secondary-progressive multiple sclerosis: assessment with diffusion MR imaging. *AJNR Am J Neuroradiol* 2000;21:862–68
88. Bammer R, Augustin M, Strasser-Fuchs S, et al. Magnetic resonance diffusion tensor imaging for characterizing diffuse and focal white matter abnormalities in multiple sclerosis. *Magn Reson Med* 2000;44:583–91
89. Werring DJ, Clark CA, Barker GJ, et al. Diffusion tensor imaging of lesions and normal-appearing white matter in multiple sclerosis. *Neurology* 1999;52:1626–32
90. Castriota-Scanderbeg A, Fasano F, Hagberg G, et al. Coefficient D(av) is more sensitive than fractional anisotropy in monitoring progression of irreversible tissue damage in focal nonactive multiple sclerosis lesions. *AJNR Am J Neuroradiol* 2003;24:663–70
91. Filippi M, Cercignani M, Inglesse M, et al. Diffusion tensor magnetic resonance imaging in multiple sclerosis. *Neurology* 2001;56:304–11
92. Guo AC, MacFall JR, Provenzale JM. Multiple sclerosis: diffusion tensor MR imaging for evaluation of normal-appearing white matter. *Radiology* 2002;222:729–36
93. Caramia F, Pantano P, Di Legge S, et al. A longitudinal study of MR diffusion changes in normal appearing white matter of patients with early multiple sclerosis. *Magn Reson Imaging* 2002;20:383–88
94. Griffin CM, Chard DT, Ciccarelli O, et al. Diffusion tensor imaging in early relapsing-remitting multiple sclerosis. *Mult Scler* 2001;7:290–97
95. Ge Y, Law M, Johnson G, et al. Preferential occult injury of corpus callosum in multiple sclerosis measured by diffusion tensor imaging. *J Magn Reson Imaging* 2004;20:1–7
96. Ciccarelli O, Werring DJ, Barker GJ, et al. A study of the mechanisms of normal-appearing white matter damage in multiple sclerosis using diffusion tensor imaging: evidence of Wallerian degeneration. *J Neurol* 2003;250:287–92
97. Evangelou N, Esiri MM, Smith S, et al. Quantitative pathological evidence for axonal loss in normal appearing white matter in multiple sclerosis. *Ann Neurol* 2000;47:391–95
98. Song SK, Sun SW, Ju WK, et al. Diffusion tensor imaging detects and differentiates axon and myelin degeneration in mouse optic nerve after retinal ischemia. *Neuroimage* 2003;20:1714–22
99. Miller DH, Albert PS, Barkhof F, et al. Guidelines for the use of magnetic resonance techniques in monitoring the treatment of multiple sclerosis: US National MS Society Task Force. *Ann Neurol* 1996;39:6–16
100. Rovaris M, Gass A, Bammer R, et al. Diffusion MRI in multiple sclerosis. *Neurology* 2005;65:1526–32
101. Wilson M, Morgan PS, Lin X, et al. Quantitative diffusion weighted magnetic resonance imaging, cerebral atrophy, and disability in multiple sclerosis. *J Neurol Neurosurg Psychiatry* 2001;70:318–22
102. Ciccarelli O, Werring DJ, Wheeler-Kingshott CA, et al. Investigation of MS normal-appearing brain using diffusion tensor MRI with clinical correlations. *Neurology* 2001;56:926–33
103. Cercignani M, Bozzali M, Iannucci G, et al. Magnetisation transfer ratio and mean diffusivity of normal appearing white and grey matter from patients with multiple sclerosis. *J Neurol Neurosurg Psychiatry* 2001;70:311–17
104. Rovaris M, Iannucci G, Falautano M, et al. Cognitive dysfunction in patients with mildly disabling relapsing-remitting multiple sclerosis: an exploratory study with diffusion tensor MR imaging. *J Neurol Sci* 2002;195:103–09
105. Ge Y, Tuvia K, Law M, et al. Corticospinal tract degeneration in brainstem in patients with multiple sclerosis: evaluation with diffusion tensor tractography. *Intern Soc Magn Reson Med*; 2005; 394



106. Soohoo S, Ge Y, Law M, et al. **Lesional fractional anisotropy, diffusivity and fiber tractography in patients with multiple sclerosis with DTI at 3 Tesla.** In: Proceedings of the 43rd Annual Meeting of the American Society of Neuroradiology 2005; Toronto: 108
107. Trapp BD, Peterson J, Ransohoff RM, et al. **Axonal transection in the lesions of multiple sclerosis.** *N Engl J Med* 1998;338:278–85
108. Law M, Saindane AM, Ge Y, et al. **Microvascular abnormality in relapsing-remitting multiple sclerosis: perfusion MR imaging findings in normal-appearing white matter.** *Radiology* 2004;231:645–52
109. Adams CW, Poston RN, Buk SJ, et al. **Inflammatory vasculitis in multiple sclerosis.** *J Neurol Sci* 1985;69:269–83
110. Putnam TJ. **Evidences of vascular occlusion in multiple sclerosis and encephalomyelitis.** *Arch Neurol Neuropsychol* 1935;1298–321
111. Lassmann H. **Hypoxia-like tissue injury as a component of multiple sclerosis lesions.** *J Neurol Sci* 2003;206:187–91
112. Wakefield AJ, More LJ, Difford J, et al. **Immunohistochemical study of vascular injury in acute multiple sclerosis.** *J Clin Pathol* 1994;47:129–33
113. Haselhorst R, Kappos L, Bilecen D, et al. **Dynamic susceptibility contrast MR imaging of plaque development in multiple sclerosis: application of an extended blood-brain barrier leakage correction.** *J Magn Reson Imaging* 2000;11:495–505
114. Wuerfel J, Bellmann-Strobl J, Brunecker P, et al. **Changes in cerebral perfusion precede plaque formation in multiple sclerosis: a longitudinal perfusion MRI study.** *Brain* 2004;127:111–19
115. Ge Y, Law M, Johnson G, et al. **Dynamic susceptibility contrast perfusion MR imaging of multiple sclerosis lesions: characterizing hemodynamic impairment and inflammatory activity.** *AJNR Am J Neuroradiol* 2005;26:1539–47
116. Davie CA, Hawkins CP, Barker GJ, et al. **Serial proton magnetic resonance spectroscopy in acute multiple sclerosis lesions.** *Brain* 1994;117:49–58
117. De Stefano N, Matthews PM, Arnold DL. **Reversible decreases in N-acetylaspartate after acute brain injury.** *Magn Reson Med* 1995;34:721–27
118. Arnold DL, Matthews PM, Francis GS, et al. **Proton magnetic resonance spectroscopic imaging for metabolic characterization of demyelinating plaques.** *Ann Neurol* 1992;31:235–41
119. Bitsch A, Bruhn H, Vougioukas V, et al. **Inflammatory CNS demyelination: histopathologic correlation with in vivo quantitative proton MR spectroscopy.** *AJNR Am J Neuroradiol* 1999;20:1619–27
120. Rovira A, Pericot I, Alonso J, et al. **Serial diffusion-weighted MR imaging and proton MR spectroscopy of acute large demyelinating brain lesions: case report.** *AJNR Am J Neuroradiol* 2002;23:989–94
121. De Stefano N, Matthews PM, Antel JP, et al. **Chemical pathology of acute demyelinating lesions and its correlation with disability.** *Ann Neurol* 1995;38:901–09
122. Wolinsky JS, Narayana PA, Fenstermacher MJ. **Proton magnetic resonance spectroscopy in multiple sclerosis.** *Neurology* 1990;40:1764–69
123. Kapeller P, Ropele S, Enzinger C, et al. **Discrimination of white matter lesions and multiple sclerosis plaques by short echo quantitative (1)H-magnetic resonance spectroscopy.** *J Neurol* 2005;252:1229–34
124. De Stefano N, Bartolozzi ML, Guidi L, et al. **Magnetic resonance spectroscopy as a measure of brain damage in multiple sclerosis.** *J Neurol Sci* 2005;233:203–08
125. Narayana PA, Doyle TJ, Lai D, et al. **Serial proton magnetic resonance spectroscopic imaging, contrast-enhanced magnetic resonance imaging, and quantitative lesion volumetry in multiple sclerosis.** *Ann Neurol* 1998;43:56–71
126. Tartaglia MC, Narayanan S, De Stefano N, et al. **Choline is increased in prelesional normal appearing white matter in multiple sclerosis.** *J Neurol* 2002;249:1382–90
127. Casanova B, Martinez-Bisbal MC, Valero C, et al. **Evidence of Wallerian degeneration in normal appearing white matter in the early stages of relapsing-remitting multiple sclerosis: a HMRS study.** *J Neurol* 2003;250:22–28
128. Khan O, Shen Y, Caon C, et al. **Axonal metabolic recovery and potential neuroprotective effect of glatiramer acetate in relapsing-remitting multiple sclerosis.** *Mult Scler* 2005;11:646–51
129. Gonen O, Catalaa I, Babb JS, et al. **Total brain N-acetylaspartate: a new measure of disease load in MS.** *Neurology* 2000;54:15–19
130. Gonen O, Moriarty DM, Li BS, et al. **Relapsing-remitting multiple sclerosis and whole-brain N-acetylaspartate measurement: evidence for different clinical cohorts initial observations.** *Radiology* 2002;225:261–68
131. Ge Y, Gonen O, Inglese M, et al. **Neuronal cell injury precedes brain atrophy in multiple sclerosis.** *Neurology* 2004;62:624–27
132. Bakshi R, Benedict RH, Bermel RA, et al. **T2 hypointensity in the deep gray matter of patients with multiple sclerosis: a quantitative magnetic resonance imaging study.** *Arch Neurol* 2002;59:62–68
133. Ge Y, Jensen JH, Inglese M, et al. **Iron accumulation in the deep gray matter of patients with multiple sclerosis measured by magnetic field correlation.** In: *Proceedings of the Radiological Society of North America*; Chicago, 2005: 563
134. Ikuta F, Zimmerman HM. **Distribution of plaques in seventy autopsy cases of multiple sclerosis in the United States.** *Neurology* 1976;26:26–28
135. Tartaglino LM, Friedman DP, Flanders AE, et al. **Multiple sclerosis in the spinal cord: MR appearance and correlation with clinical parameters.** *Radiology* 1995;195:725–32
136. Losseff NA, Webb SL, O’Riordan JI, et al. **Spinal cord atrophy and disability in multiple sclerosis: a new reproducible and sensitive MRI method with potential to monitor disease progression.** *Brain* 1996;119:701–08
137. Lycklama G, Thompson A, Filippi M, et al. **Spinal-cord MRI in multiple sclerosis.** *Lancet Neurol* 2003;2:555–62
138. Lycklama a Nijeholt GJ, Castelijns JA, Weerts J, et al. **Sagittal MR of multiple sclerosis in the spinal cord: fast versus conventional spin-echo imaging.** *AJNR Am J Neuroradiol* 1998;19:355–60
139. Rocca MA, Mastronardo G, Horsfield MA, et al. **Comparison of three MR sequences for the detection of cervical cord lesions in patients with multiple sclerosis.** *AJNR Am J Neuroradiol* 1999;20:1710–16
140. Keiper MD, Grossman RI, Brunson JC, et al. **The low sensitivity of fluid-attenuated inversion-recovery MR in the detection of multiple sclerosis of the spinal cord.** *AJNR Am J Neuroradiol* 1997;18:1035–39
141. Bot JC, Blezer EL, Kamphorst W, et al. **The spinal cord in multiple sclerosis: relationship of high-spatial-resolution quantitative MR imaging findings to histopathologic results.** *Radiology* 2004;233:531–40
142. Valsasina P, Rocca MA, Agosta F, et al. **Mean diffusivity and fractional anisotropy histogram analysis of the cervical cord in MS patients.** *Neuroimage* 2005;26:822–28
143. Hesseltine S, Law M, Babb J, et al. **Diffusion tensor imaging in multiple sclerosis: assessment of regional differences in the axial plane within normal-appearing cervical spinal cord.** *AJNR Am J Neuroradiol* 2006;27:1189–1193
144. Hickman SJ, Hadjiprocopis A, Coulon O, et al. **Cervical spinal cord MTR histogram analysis in multiple sclerosis using a 3D acquisition and a B-spline active surface segmentation technique.** *Magn Reson Imaging* 2004;22:891–95
145. Rovaris M, Gallo A, Riva R, et al. **An MT MRI study of the cervical cord in clinically isolated syndromes suggestive of MS.** *Neurology* 2004;63:584–85
146. Christoforidis GA, Kangarlu A, Abduljalil AM, et al. **Susceptibility-based imaging of glioblastoma microvasculature at 8T: correlation of MR imaging and postmortem pathology.** *AJNR Am J Neuroradiol* 2004;25:756–60
147. Tan IL, van Schijndel RA, Pouwels PJ, et al. **MR venography of multiple sclerosis.** *AJNR Am J Neuroradiol* 2000;21:1039–42
148. Hetherington HP, Pan JW, Chu WJ, et al. **Biological and clinical MRS at ultra-high field.** *NMR Biomed* 1997;10:360–71