

M.V. Spampinato  
S.A. Nguyen  
Z. Rumboldt

# Comparison of Gadobenate Dimeglumine and Gadodiamide in the Evaluation of Spinal Vascular Anatomy with MR Angiography

**BACKGROUND AND PURPOSE:** Spinal MRA has been increasingly used to evaluate non-invasively the spinal cord vasculature. Our aim was to prospectively compare gadobenate dimeglumine with gadodiamide in the assessment of the normal spinal cord vasculature by using contrast-enhanced MRA, with the hypothesis that high T1 relaxivity gadolinium compounds may improve visualization of the intradural vessels.

**MATERIALS AND METHODS:** Twenty subjects underwent 2 temporally separated contrast-enhanced spinal MRAs with gadobenate dimeglumine and gadodiamide (0.2 mmol/kg). Two blinded observers rated postprocessed images on the following qualitative parameters: background homogeneity, sharpness, vascular continuity, and contrast enhancement. Delineation of the ASA, AKA, hairpin configuration of the ASA-AKA connection, and visualized ASA length were recorded. Each observer indicated which of the 2 matched studies he or she thought was of the best overall diagnostic quality.

**RESULTS:** According to both observers gadobenate dimeglumine was superior to gadodiamide in the representation of vascular continuity and contrast ( $P$  value  $< .05$ ). Background homogeneity was not significantly different between the studies. One observer favored gadobenate dimeglumine over gadodiamide in the demonstration of vascular sharpness, while the second observer did not find any significant difference between contrast agents. There was no significant difference between contrast agents in the visualization of the ASA, AKA, hairpin-shaped ASA-AKA connection, and visualized length of the ASA. The overall quality of the gadobenate dimeglumine-enhanced MRA was deemed superior in 15 and 16 cases, respectively, by the 2 observers.

**CONCLUSIONS:** Improved image quality and vascular contrast enhancement of spinal MRA at 1.5T is achieved with high T1 relaxivity gadolinium contrast agents compared with conventional agents at equivalent doses.

**ABBREVIATIONS:** AKA = artery of Adamkiewicz; ASA = anterior spinal artery; DSA = digital subtraction angiography; G = gadodiamide; GD = gadobenate dimeglumine; MRA = MR angiography

DSA is the criterion standard in the diagnosis and characterization of spinal vascular lesions.<sup>1</sup> Despite its superior spatial resolution, DSA has several limitations: It is a time-consuming and invasive technique that involves exposure to ionizing radiation, it carries a risk of major complications, and can only be performed by expert angiographers. Thus the use of noninvasive imaging techniques to evaluate the intradural vasculature has been pursued in research and clinical practice. Current MR technology meets the requirement of spatial coverage and spatial and temporal resolution to enable the visualization of the main spinal cord arteries.<sup>2-4</sup> Nevertheless, spinal MRA remains challenging, and methods to improve vessel visualization in routine clinical practice are highly desirable.

Gadobenate dimeglumine (MultiHance, Bracco Imaging, Milan, Italy) is a gadolinium contrast agent approved

by the US Food and Drug Administration for MR imaging of the central nervous system. It is similar to conventional gadolinium compounds in terms of its safety profile and physicochemical properties in patients with preserved renal function, though linear gadolinium contrast agents such as gadodiamide have been linked to the development of nephrogenic systemic fibrosis in patients with renal failure.<sup>5,6</sup> Gadobenate dimeglumine differs from conventional gadolinium chelates because it demonstrates partial hepatobiliary excretion and greater in vivo T1 and T2 relaxivities in blood due to weak and transitory interaction with serum proteins.<sup>7-9</sup> This leads to greater intravascular signal-intensity enhancement, highly valuable for contrast-enhanced MRA applications.<sup>10</sup>

The usefulness of gadobenate dimeglumine in MRA has been investigated in multiple vascular regions.<sup>11-16</sup> To our knowledge, no prospective studies have been conducted to compare gadobenate dimeglumine with a conventional gadolinium compound in the evaluation of the intradural vasculature by using MRA. The purpose of this study was to determine the potential advantages of gadobenate dimeglumine over a non-protein-binding gadolinium chelate in the assessment of the normal intradural vascular anatomy of the spine by using contrast-enhanced MRA at a 1.5T field strength. Our hypothesis was that the higher T1 relaxivity of gadobenate dimeglumine would result in improved visualization of the

Received September 9, 2009; accepted after revision October 28.

From the Departments of Radiology and Radiological Science (M.V.S., Z.R.) and Otolaryngology-Head and Neck Surgery (S.A.N.), Medical University of South Carolina, Charleston, South Carolina.

This work was supported by a research grant sponsored by Bracco Diagnostics, Inc.

Paper previously presented at: Annual Meeting of the European Society of Neuroradiology, September 17-20, 2009; Athens, Greece.

Please address correspondence to Maria Vittoria Spampinato, MD, Department of Radiology and Radiological Science, Medical University of South Carolina, 96 Jonathan Lucas St, MSC 323, Charleston, SC 29425; e-mail: spampin@musc.edu

DOI 10.3174/ajnr.A1974

intradural vessels compared with a conventional gadolinium contrast agent.

## Materials and Methods

This prospective study was a double-blind randomized intraindividual crossover comparison of a 0.2-mmol/kg dose of gadobenate dimeglumine and gadodiamide for contrast-enhanced MRA of the spinal cord vasculature. The study was approved by the institutional review board and was Health Insurance Portability and Accountability Act-compliant. Written informed consent was obtained from subjects before participation. Subjects were enrolled in the study if they met the following inclusion criteria: 1) 18 years of age or older, 2) able to give written informed consent, and 3) willing to undergo 2 MR imaging procedures within 4 weeks. Exclusion criteria were as follows: 1) pregnant or lactating women, 2) allergy to gadolinium contrast agents or other metals, 3) renal failure or class III and IV congestive heart failure (New York Heart Association classification), 4) clinical suspicion or MR imaging findings of a spinal vascular malformation, 5) prior spine surgery, 6) surgical hardware or another possible source of susceptibility artifacts in the spinal or adjacent tissues, and 7) circumstances that would preclude proximity to a strong magnetic field (eg, pacemaker, non-MR imaging-compatible surgical clips, claustrophobia).

## Subjects

Twenty subjects (8 men; mean age, 43.7 years; range, 24–77 years) underwent 2 contrast-enhanced MRA examinations of the spine between August 2007 and September 2008 (minimum time interval, 72 hours; maximum time interval, 28 days). Renal function was evaluated before the study, and the glomerular filtration rate was found to be >59 mL/min in all subjects before inclusion in the study. Pregnancy was excluded by means of a pregnancy test conducted within 24 hours before each contrast agent administration (urine  $\beta$  human chorionic gonadotropin) or by history (ie, tubal ligation, hysterectomy, postmenopausal).

## MR Imaging

All examinations were performed on a 1.5T MR imaging system with a 6-channel phased-array spine coil. The 2 examinations differed only in terms of the contrast agent used (gadobenate dimeglumine versus gadodiamide). Pertinent physicochemical properties of the 2 contrast agents are the following: gadobenate dimeglumine is a 0.5 mol/L solution with a concentration of 529 mg/mL, osmolality of 1.970 osmol/kg at 37°C, and attenuation of 1.220 g/mL at 20°C. Gadodiamide is a 0.5-mol/L solution with a concentration of 287 mg/mL, osmolality of 0.789 osmol/kg at 37°C, and attenuation of 1.14 g/mL at 20°C. Gadobenate dimeglumine and gadodiamide have different magnetic properties described by their R1 and R2 relaxivities. The R1 relaxivity values of gadobenate dimeglumine and gadodiamide in plasma at 37°C and at a field strength of 1.5T are, respectively, 6.3 (range, 6.0–6.6) and 4.3 (range, 4.0–4.6) L mmol<sup>-1</sup> s<sup>-1</sup>.<sup>17</sup>

The contrast agent for each examination was assigned according to a randomization list (SAS, Version 9.2; SAS Institute, Cary, North Carolina) and was administered by an independent drug-dispensing person to ensure blinding of the investigators. Participants were unaware of group assignment. After a 3D localizer scan, standard axial and sagittal T2-weighted sequences of the thoracic and lumbar spine were performed. We used a previously described MRA imaging protocol.<sup>18</sup> The FOV of the MRA covered the level of the fourth thoracic vertebra down to fifth lumbar vertebra to ensure that the AKA was

included. The study was performed by using a contrast-enhanced 3D fast-spoiled gradient recalled acquisition in the steady-state sequence and the following imaging parameters: TR/TE, 5.9/1.9 ms; flip angle, 30°; voxel size, 0.8 × 0.8 × 0.6 mm<sup>3</sup>. Sagittal sections were used to obtain the least number of phase-encoding steps and consequently the shortest acquisition time. The *k*-space was filled by using an elliptic-centric order. Synchronization of the sampling of the *k*-space center with the peak contrast agent concentration was achieved with power injection through an antecubital intravenous line of a test bolus of 2 mL of contrast material (flow rate, 3 mL/s) by using the dynamic viewing mode of the scanner.

The optimal delay time for the spinal MRA was determined as the time interval between the onset of the test bolus injection and the first scan showing intense contrast enhancement of the distal aorta. After the injection of a dose of contrast material of 0.2 mmol/kg of body weight, followed by a 25-mL saline flush by using a power injector (flow rate, 3 mL/s), the contrast-enhanced MRA was performed with 2 dynamic phases, each of a duration of approximately 35 seconds. The second phase began without delay after completion of the first phase. Despite a scanning duration of 35 seconds, the centric *k*-space filling ensured a difference between the predominantly arterial (first phase) and predominantly venous (second phase) enhancement. The average FOV size was 45 cm in the craniocaudal direction (frequency encoding) and 16 cm in the phase-encoding direction.

The second MR imaging examination was performed by using the same scanner, procedures, and technical MR imaging parameters, with a median interval of 12 days (range, 7–28 days). The 2 examinations in each subject differed only in terms of the contrast agent used.

## Image Analysis

Images were evaluated at a multimonitor workstation by 2 blinded observers with 5 and 10 years, respectively, of experience in the evaluation of MRA studies. The MRA images were analyzed by using curved multiplanar reformations and full-volume and partial-volume maximum intensity projection reconstructions of the region of interest (T4–L5 intradural vasculature) by using a commercially available image processing software (Aquarius Net, Version 1.8.2.20; TeraRecon, San Mateo, California).

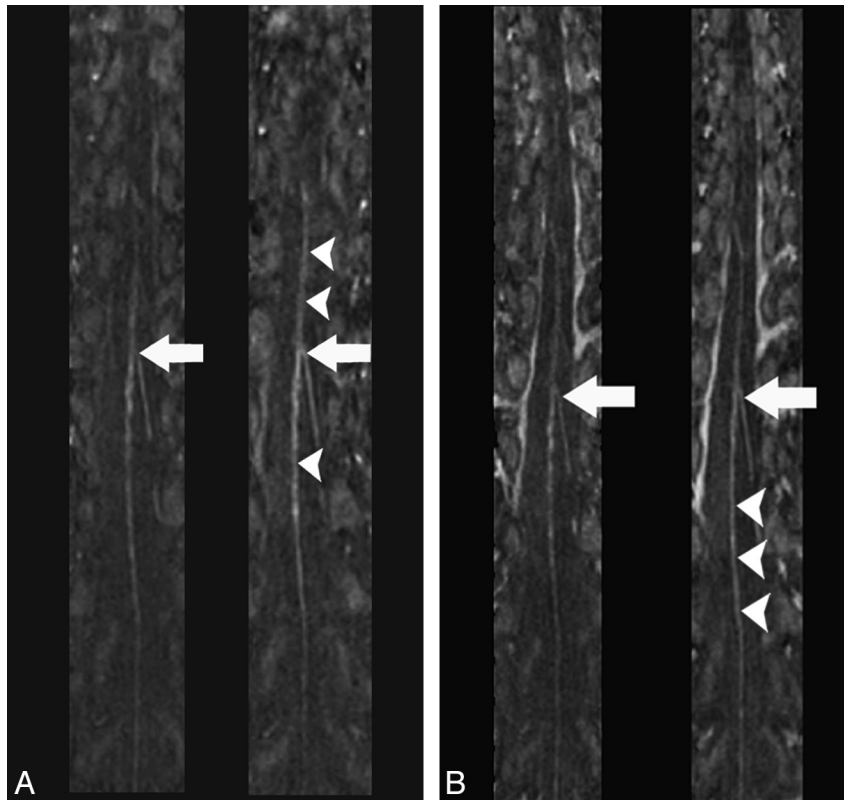
Initial assessment of the studies was conducted by consensus to determine the technical quality of the MRA images. Technical quality of the studies was rated as inadequate, poor, moderate, good, or excellent. Images were considered technically adequate for the following reasons: 1) visualization of the spinal canal from T4 to L5, 2) coverage of the entire width of the spinal canal and neural foramina, and 3) no artifacts compromising image quality.

Subsequently, the blinded observers evaluated the studies in a randomized order and gathered the following information in consensus:

- 1) Identification of the ASA.
- 2) Length of the visualized portion of the ASA (measured in vertebral bodies because the ASA has a curvilinear course).
- 3) Identification of the AKA.
- 4) Vertebral level and side of origin of the AKA.
- 5) Visualization of the hairpin connection between the ASA and AKA.

The criteria used to identify the ASA and AKA were the following<sup>18</sup>:

- 1) An enhanced structure in the middle of the anterior surface of the spinal cord, brighter during the predominantly arterial phase than during the venous phase.
- 2) A vessel running through a neural foramen, ascending toward



**Fig 1.** Multiplanar reformation images of the spinal MRA obtained during the predominantly arterial (A) and predominantly venous (B) phases in the same healthy individual by using gadodiamide (left) and gadobenate dimeglumine (right) (TR/TE, 5.9/1.9 ms; flip angle, 30°; 0.2 mmol/kg). The hairpin configuration of the connection between the ASA and ACA is seen with both contrast agents (arrows); however, intravascular enhancement of the ASA appears greater in the gadobenate dimeglumine study (arrowheads).

midline and connecting to the ASA with a hairpin configuration, brighter during the predominantly arterial dynamic phase than during the predominantly venous phase.

3) To identify the ASA and ACA hairpin connection, we inspected axial reconstructions of the spinal MRAs, and once this was identified, the course of these vessels was evaluated by using curved multiplanar reformations. The vertebral level of origin of the ACA was determined by using the anatomic T2-weighted images as a reference. The presence of a second vessel with a configuration similar to the that of ACA, corresponding to the great anterior medullary vein, was also noted. If there were 2 vessels draining along the anterior aspect of the spinal cord with a hairpin configuration, the vascular structure that demonstrated greater enhancement in the first dynamic phase and lesser enhancement in the second dynamic phase was deemed to be the ACA. Note that the technique used in this study does not allow isolating the ASA, and venous contamination from the anterior median vein is likely given their close spatial relation and the high likelihood of venous enhancement (duration of the pulse sequence is 35 seconds; average arteriovenous spinal cord circulation time is 10 seconds).

Next, each observer separately conducted a qualitative assessment of the following parameters of individual subject images:

- 1) Background homogeneity.
- 2) Vessel sharpness.
- 3) Vessel continuity.
- 4) Vessel-to-background contrast.

A 5-point scale was used for grading: 1, very poor; 2, poor; 3, moderate; 4, good; 5, excellent. Images obtained in each patient were evaluated in a matched-pairs fashion. Finally, during matched-pairs evaluation, each observer also indicated which of the 2 matched studies was of better overall quality.

Quantitative assessments of signal intensity were not conducted in this study because the small size of the vascular structures involved (often submillimeter) would not allow a region-of-interest placement entirely within the vessel lumen without partial volume averaging with the surrounding CSF.

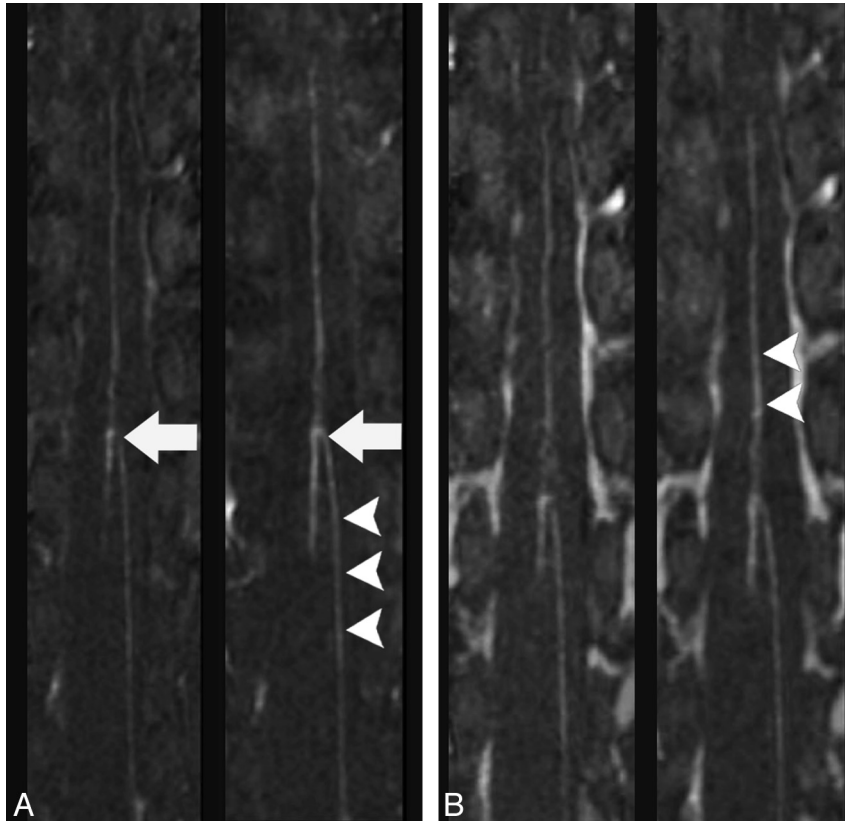
#### Statistical Analysis

All analyses and graph construction were performed by using Sigma Stat 3.5 (Sample Power 2.0; Systat Software, Chicago, Illinois) and SPSS 15.0 (SPSS, Chicago, Illinois) software. Descriptive statistics such as frequency and percentage were calculated for all categorical variables. Mean, median, SD, minimum, and maximum were calculated for all continuous variables. Sample size was estimated on the basis of a 2-sided  $\alpha$  level equal to 0.05. On the basis of a previous study,<sup>19</sup> a sample size of 20 subjects was estimated to provide a 100% power to detect the 42%–49% difference in terms of contrast-to-noise ratio between the 2 contrast agents. Comparisons of categorical variables between the 2 contrast groups were performed by using the Fisher exact test. A  $P$  value  $< .05$  was considered to indicate a statistically significant difference.

#### Results

The technical quality of the contrast-enhanced MRA examinations was considered excellent in 4 cases, good in 19 cases, and moderate in 17 cases. Therefore, all the studies were included in the subsequent analysis.

The ASA was identified in all MRA examinations (Figs 1 and 2). The length of the visualized portion of the ASA was not significantly different between the 2 contrast agents (average length in vertebral bodies: gadobenate dimeglumine = 5.5  $\pm$



**Fig 2.** Multiplanar reformation images of the spinal MRA obtained during the predominantly arterial (A) and predominantly venous (B) phases in the same healthy individual by using gadodiamide (left) and gadobenate dimeglumine (right) (TR/TE, 5.9/1.9 ms; flip angle, 30°; 0.2 mmol/kg). The hairpin configuration of the connection between the ASA and ACA is better visualized by using gadobenate dimeglumine (arrows); intravascular enhancement appears greater in the gadobenate dimeglumine study (arrowheads).

2; gadodiamide =  $5.7 \pm 2$ ). The segmental origin of the AKA was identified in 14 cases in both MRA examinations performed with gadobenate dimeglumine and gadodiamide. In all 14 cases, the side and segmental origin of the AKA, as determined by the 2 readers in consensus, was concordant between the studies conducted by using gadobenate dimeglumine and gadodiamide (segmental origin of the AKA: T7-T8 = 1; T10-T11 = 1; T11-T12 = 3; L1-L2 = 4; L2-L3 = 4; L3-L4 = 1; in 8 cases, the origin of the AKA was on the right; in 6 cases, it was on the left). In 3 subjects, the segmental origin of the AKA was not identified by using either contrast agent. In 2 cases, the origin of the AKA was only identified on the examinations performed with gadobenate dimeglumine (segmental origin of the AKA: T11-T12 = 1; L1-L2 = 1; in 1 case, the origin of the AKA was on the left; in 1 case, it was on the right); and in 1 case, it was identified only on the examinations performed with gadodiamide (segmental origin of the AKA: L2-L3 = 1; origin of the AKA on the left).

The hairpin-shaped connection between the ASA and AKA was identified in 17 gadodiamide-enhanced and in 16 gadobenate dimeglumine-enhanced studies. This difference between the contrast agents was not statistically significant. A second vessel draining along the anterior aspect of the spinal cord with a hairpin configuration representing the great anterior medullary vein was identified in 11 cases by using gadobenate dimeglumine and in 9 cases by using gadodiamide. This difference was not statistically significant.

The results of the qualitative evaluation are presented in

**Comparison of gadodiamide- and gadobenate dimeglumine-enhanced MRA<sup>a</sup>**

	Observer A		Observer B	
	GD	G	GD	G
Background homogeneity	3.6 (0.7)	3.5 (0.7)	3.6 (0.9)	3.45 (0.8)
Sharpness	3.3 (1)	2.9 (1)	3.2 (0.8)	2.9 (0.8)
Continuity	3.3 (0.9)	2.6 (1.1)	3.5 (0.9)	2.4 (0.7)
Contrast	3.3 (1)	2.7 (1)	3.6 (0.8)	3.0 (0.8)

<sup>a</sup> A 5-point scale (1 = very poor; 2 = poor; 3 = moderate; 4 = good; 5 = excellent) was used. The number represents the average rating (SD).

the Table. There was no significant difference in background homogeneity between the MRAs conducted with each contrast agent according to both observers (observer A, observer B). One observer (observer A) favored gadobenate dimeglumine over gadodiamide as far as sharpness of the vascular structures ( $P < .05$ ). There was no significant difference between the 2 contrast agents with respect to vascular sharpness on the basis of the ratings of the second observer. Both observers deemed gadobenate dimeglumine superior to gadodiamide in the representation of vascular continuity and vessel-to-background contrast (both observers,  $P < .05$ ).

Finally, observer A deemed the overall quality of the gadobenate dimeglumine-enhanced MRA better than that of the gadodiamide-enhanced MRA in 15 cases, while observer B favored the gadobenate dimeglumine-enhanced study in 16 cases (both observers,  $P < .05$ ).



## Discussion

In this study, we performed a prospective comparison of gadobenate dimeglumine with a conventional gadolinium compound in the evaluation of the intradural vasculature by using MRA.

The spine and its contents have a unique segmental arterial supply. The ASA travels along the anterior sulcus of the spinal cord and typically originates from the vertebral arteries; the posterior lateral spinal cord arteries originate from the preatlantal vertebral artery or the posterior inferior cerebellar arteries.<sup>1</sup> These 3 arteries run along the entire spinal cord from the cervical region to the conus. They would not be sufficient to provide enough blood supply to the whole spinal cord and are supported by radiculomedullary arteries, the largest of which is the AKA, originating at various and unpredictable segmental levels.

Spinal vascular diseases are relatively rare disorders compared with intracranial neurovascular disorders. According to a classification based on spinal vascular anatomy, spinal vascular diseases can be classified into spinal cord arteriovenous malformations, which are supplied by the intrinsic arteries of the spinal cord (arteries normally supplying the neural tissue), and spinal dural arteriovenous fistulas, which are supplied by radiculomeningeal arteries and are categorized into ventral, dorsal, and lateral epidural arteriovenous fistulas on the basis of the location of the epidural shunt.<sup>20</sup> DSA is still necessary to characterize in detail the type of vascular abnormality and to plan treatment strategy.<sup>1</sup> However, the localization of the fistula and AKA segmental level in dural arteriovenous fistulas can be quite difficult and time-consuming. Additionally, spinal angiography is invasive and requires highly trained personnel; therefore, it is not widely used outside specialized centers. For this reason noninvasive techniques, such as contrast-enhanced MRA with fast-acquisition protocols and large craniocaudal FOVs have been developed to evaluate and map the intradural vasculature before DSA or embolization.<sup>20</sup> Spinal MRA has been used as a tool to localize the AKA in patients undergoing thoracoscopic spinal surgery to determine the side of the surgical approach,<sup>18</sup> in aortic surgery for treatment of aneurysms,<sup>3,21–23</sup> and to detect the fistula level in patients with spinal dural arteriovenous fistulas.<sup>4,19,24,25</sup>

MRA of the spine is challenging because of the relatively rapid arteriovenous circulation time, spinal cord circulation complexity and variability, and the small caliber of the intradural vessels. The caliber of the ASA and AKA is well known from spinal angiography and autopsy studies.<sup>26</sup> The ASA diameter usually ranges from 200–500  $\mu\text{m}$  (cervical region) to 500–800  $\mu\text{m}$  (lumbar region), while the AKA ranges from 500  $\mu\text{m}$  to 1.2 mm. Because a voxel size of approximately 0.4 mm<sup>3</sup> was used in this study, we believe that the spatial resolution of the MRA technique was adequate to image the thoracolumbar intradural vessels.

Our results show that vessel contrast enhancement, vessel continuity, and overall image quality achieved with gadobenate dimeglumine were superior to those characteristics obtained with an identical dose of a conventional gadolinium contrast agent, though we did not find a significant difference in the visualized length of the ASA. As described in previous intraindividual crossover comparisons of gadobenate dimeglumine and conventional gadolinium agents for contrast-en-

hanced MRA<sup>11–15,27</sup> and other MR imaging applications,<sup>28–34</sup> the better performance of gadobenate dimeglumine can be attributed to its greater R1 relaxivity, due to transient and weak interactions of the contrast-effective component of gadobenate with serum proteins.<sup>8,9,34,35</sup> The advantage of using gadobenate dimeglumine compared with a conventional contrast agent has been recently investigated in the assessment with MRA of the supra-aortic vessels.<sup>16</sup> In this study, the benefit of the increased intravascular enhancement achieved with gadobenate dimeglumine was more evident in the smaller distal cerebral arterial segments than in the proximal epiaortic vessels. In agreement with previous results in various vascular districts, we found that gadobenate dimeglumine provided better definition of the spinal cord vasculature compared with a conventional gadolinium compound. Our study confirms prior observations of the advantage of gadobenate dimeglumine-enhanced MRA and suggests the potential benefit of gadobenate dimeglumine in the evaluation of the intradural vessels.

There are some limitations to the study. The size of the sample may have been insufficient to detect differences between the 2 contrast agents in the identification of the site of origin of the AKA and the visualized length of the ASA. However, the use of an intraindividual comparative approach allowed significantly better visualization of vascular continuity and greater contrast enhancement of the intradural vasculature to be demonstrated with the use of gadobenate dimeglumine than with gadodiamide. We used a 1.5T MR imaging unit; however, 3T systems provide improved spatial/temporal resolution, vessel/tissue contrast, and background suppression. In this study, we administered a double dose of contrast agent on the basis of the spinal MRA imaging protocols described in the literature advocating a double or triple dose of gadolinium contrast agent.<sup>2–4,18</sup> A single dose of gadobenate dimeglumine (0.1 mmol/kg bodyweight) with a 3T imaging system has been used with good results in the evaluation of the supra-aortic vessels with MRA<sup>16</sup> and requires further investigation in the assessment of spinal cord vasculature.

The requirement for high-spatial resolution MRA has the intrinsic drawback of a relatively long acquisition time and potential venous contamination. The circulation time between arterial and venous enhancement in the spinal cord is not precisely known; however, it is probably similar to the 8- to 12-second circulation time within the anterior intracranial circulation.<sup>36</sup> The MRA sequence used in this study lasted approximately 35 seconds, which likely results in venous contamination. However, we used an elliptic-centric pattern of *k*-space acquisition in combination with synchronization of the sampling of the *k*-space center with the peak contrast agent concentration by using fluoroscopic triggering to minimize venous contamination. Recently, time-resolved MRA, an imaging technique able to achieve scanning times of 6.5–8 seconds per dynamic phase, has been applied to the evaluation of the intradural vasculature.<sup>37</sup> This technique allows an improved isolation of the arterial, mixed arterial-venous, and venous enhancement of the spinal cord vessels. The potential advantage of using gadobenate dimeglumine in time-resolved MRA requires further investigation.

The use of gadobenate dimeglumine did not result in significant enhancement of spinal MRA diagnostic quality com-

pared with gadodiamide because there was no clear difference in the identification of the ASA, AKA, and level of origin of the AKA between contrast agents. However our findings suggest that improved image quality can be achieved by using high-relaxivity gadolinium agents in spinal MRA. We believe that it is advisable to further investigate whether the improved image quality achieved with the use of high-relaxivity gadolinium agents translates into improved diagnostic quality of spinal MRA when patients with arteriovenous spinal malformations, not healthy controls, are tested. Hence future studies comparing MRA performed with gadobenate dimeglumine and conventional gadolinium compounds in a population of patients with spinal cord vascular malformation are warranted to test this hypothesis, by using conventional spinal angiography as the criterion standard.

## Conclusions

Our study revealed significantly better qualitative contrast enhancement of the intradural vasculature with gadobenate dimeglumine compared with gadodiamide when these contrast agents were compared intraindividually at 0.2 mmol/kg of bodyweight by using identical scanning parameters at a 1.5T field strength. Although there was no significant difference in the detection rate of the AKA between the 2 contrast agents in healthy subjects, on the basis of the results of our study, we believe it is important to further investigate whether the improved image quality achieved with the use of high-relaxivity gadolinium agents translates into improved diagnostic quality of spinal MRA in the noninvasive identification of the arteriovenous shunt location in patients with arteriovenous spinal malformations.

## References

- Krings T, Lasjaunias PL, Hans FJ, et al. **Imaging in spinal vascular disease.** *Neuroimaging Clin N Am* 2007;17:57–72
- Backes WH, Nijenhuis RJ. **Advances in spinal cord MR angiography.** *AJNR Am J Neuroradiol* 2008;29:619–31
- Hyodoh H, Kawaharada N, Akiba H, et al. **Usefulness of preoperative detection of artery of Adamkiewicz with dynamic contrast-enhanced MR angiography.** *Radiology* 2005;236:1004–09
- Saraf-Lavi E, Bowen BC, Quencer RM, et al. **Detection of spinal dural arteriovenous fistulae with MR imaging and contrast-enhanced MR angiography: sensitivity, specificity, and prediction of vertebral level.** *AJNR Am J Neuroradiol* 2002;23:858–67
- Marckmann P, Skov L, Rossen K, et al. **Case-control study of gadodiamide-related nephrogenic systemic fibrosis.** *Nephrol Dial Transplant* 2007;22:3174–78
- Perez-Rodriguez J, Lai S, Ehst BD, et al. **Nephrogenic systemic fibrosis: incidence, associations, and effect of risk factor assessment—report of 33 cases.** *Radiology* 2009;250:371–77
- Runge VM, Parker JR, Donovan M. **Double-blind, efficacy evaluation of gadobenate dimeglumine, a gadolinium chelate with enhanced relaxivity, in malignant lesions of the brain.** *Invest Radiol* 2002;37:269–80
- Cavagna FM, Maggioni F, Castelli PM, et al. **Gadolinium chelates with weak binding to serum proteins: a new class of high-efficiency, general purpose contrast agents for magnetic resonance imaging.** *Invest Radiol* 1997;32:780–96
- de Haen C, Cabrini M, Akhanna L, et al. **Gadobenate dimeglumine 0.5 M solution for injection (MultiHance) pharmaceutical formulation and physicochemical properties of a new magnetic resonance imaging contrast medium.** *J Comput Assist Tomogr* 1999;23(suppl 1):S161–68
- Catalano C, Pediconi F, Nardis P, et al. **MR angiography with MultiHance for imaging the supra-aortic vessels.** *Eur Radiol* 2004;14(suppl 7):O45–51, discussion O61–62
- Wytenbach R, Gianella S, Alerci M, et al. **Prospective blinded evaluation of Gd-DOTA- versus Gd-BOPTA-enhanced peripheral MR angiography, as compared with digital subtraction angiography.** *Radiology* 2003;227:261–69
- Knopp MV, Schoenberg SO, Rehm C, et al. **Assessment of gadobenate dimeglumine for magnetic resonance angiography: phase I studies.** *Invest Radiol* 2002;37:706–15

- Knopp MV, Giesel FL, von Tengg-Kobligh H, et al. **Contrast-enhanced MR angiography of the run-off vasculature: intraindividual comparison of gadobenate dimeglumine with gadopentetate dimeglumine.** *J Magn Reson Imaging* 2003;17:694–702
- Volk M, Strotzer M, Lenhart M, et al. **Renal time-resolved MR angiography: quantitative comparison of gadobenate dimeglumine and gadopentetate dimeglumine with different doses.** *Radiology* 2001;220:484–88
- Prokop M, Schneider G, Vanzulli A, et al. **Contrast-enhanced MR angiography of the renal arteries: blinded multicenter crossover comparison of gadobenate dimeglumine and gadopentetate dimeglumine.** *Radiology* 2005;234:399–408
- Bueltmann E, Erb G, Kirchin MA, et al. **Intra-individual crossover comparison of gadobenate dimeglumine and gadopentetate dimeglumine for contrast-enhanced magnetic resonance angiography of the supraaortic vessels at 3 Tesla.** *Invest Radiol* 2008;43:695–702
- Rohrer M, Bauer H, Mintorovitch J, et al. **Comparison of magnetic properties of MRI contrast media solutions at different magnetic field strengths.** *Invest Radiol* 2005;40:715–24
- Nijenhuis RJ, Leiner T, Cornips EM, et al. **Spinal cord feeding arteries at MR angiography for thoracoscopic spinal surgery: feasibility study and implications for surgical approach.** *Radiology* 2004;233:541–47
- Mull M, Nijenhuis RJ, Backes WH, et al. **Value and limitations of contrast-enhanced MR angiography in spinal arteriovenous malformations and dural arteriovenous fistulas.** *AJNR Am J Neuroradiol* 2007;28:1249–58
- Krings T, Geibprasert S. **Spinal dural arteriovenous fistulas.** *AJNR Am J Neuroradiol* 2009;30:639–48
- Backes WH, Nijenhuis RJ, Mess WH, et al. **Magnetic resonance angiography of collateral blood supply to spinal cord in thoracic and thoracoabdominal aortic aneurysm patients.** *J Vasc Surg* 2008;48:261–71. Epub 2008 Jun 20
- Nijenhuis RJ, Jacobs MJ, Jaspers K, et al. **Comparison of magnetic resonance with computed tomography angiography for preoperative localization of the Adamkiewicz artery in thoracoabdominal aortic aneurysm patients.** *J Vasc Surg* 2007;45:677–85
- Kawaharada N, Morishita K, Hyodoh H, et al. **Magnetic resonance angiographic localization of the artery of Adamkiewicz for spinal cord blood supply.** *Ann Thorac Surg* 2004;78:846–51, discussion 851–52
- Farb RI, Kim JK, Willinsky RA, et al. **Spinal dural arteriovenous fistula localization with a technique of first-pass gadolinium-enhanced MR angiography: initial experience.** *Radiology* 2002;222:843–50
- Luetmer PH, Lane JI, Gilbertson JR, et al. **Preangiographic evaluation of spinal dural arteriovenous fistulas with elliptic centric contrast-enhanced MR angiography and effect on radiation dose and volume of iodinated contrast material.** *AJNR Am J Neuroradiol* 2005;26:711–18
- Sheehy NP, Boyle GE, Meaney JF. **Normal anterior spinal arteries within the cervical region: high-spatial-resolution contrast-enhanced three-dimensional MR angiography.** *Radiology* 2005;236:637–41
- Anzalone N, Scotti R, Vezzulli P. **High relaxivity contrast agents in MR angiography of the carotid arteries.** *Eur Radiol* 2006;16(suppl 7):M27–34
- Balci NC, Inan N, Anik Y, et al. **Low-dose gadobenate dimeglumine versus standard-dose gadopentate dimeglumine for delayed contrast-enhanced cardiac magnetic resonance imaging.** *Acad Radiol* 2006;13:833–39
- Colosimo C, Knopp MV, Barreau X, et al. **A comparison of Gd-BOPTA and Gd-DOTA for contrast-enhanced MRI of intracranial tumours.** *Neuroradiology* 2004;46:655–65. Epub 2004 Jun 15
- Knopp MV, Runge VM, Essig M, et al. **Primary and secondary brain tumors at MR imaging: bicentric intraindividual crossover comparison of gadobenate dimeglumine and gadopentetate dimeglumine.** *Radiology* 2004;230:55–64
- Kuhn MJ, Picozzi P, Maldjian JA, et al. **Evaluation of intraaxial enhancing brain tumors on magnetic resonance imaging: intraindividual crossover comparison of gadobenate dimeglumine and gadopentetate dimeglumine for visualization and assessment, and implications for surgical intervention.** *J Neurosurg* 2007;106:557–66
- Maravilla KR, Maldjian JA, Schmalfuss IM, et al. **Contrast enhancement of central nervous system lesions: multicenter intraindividual crossover comparative study of two MR contrast agents.** *Radiology* 2006;240:389–400
- Rowley HA, Scialfa G, Gao PY, et al. **Contrast-enhanced MR imaging of brain lesions: a large-scale intraindividual crossover comparison of gadobenate dimeglumine versus gadodiamide.** *AJNR Am J Neuroradiol* 2008;29:1684–91
- Rumboldt Z, Rowley HA, Steinberg F, et al. **Multicenter, double-blind, randomized, intra-individual crossover comparison of gadobenate dimeglumine and gadopentetate dimeglumine in MRI of brain tumors at 3 Tesla.** *J Magn Reson Imaging* 2009;29:760–67
- Giesel FL, von Tengg-Kobligh H, Wilkinson ID, et al. **Influence of human serum albumin on longitudinal and transverse relaxation rates (r1 and r2) of magnetic resonance contrast agents.** *Invest Radiol* 2006;41:222–28
- Nijenhuis RJ, Backes WH. **Inlet arteries or outlet veins of the spinal cord?** *AJR Am J Roentgenol* 2007;189:W45, author reply W46
- Hyodoh H, Shirase R, Akiba H, et al. **Double-subtraction maximum intensity projection MR angiography for detecting the artery of Adamkiewicz and differentiating it from the drainage vein.** *J Magn Reson Imaging* 2007;26:359–65