

Are your MRI contrast agents cost-effective?

Learn more about generic Gadolinium-Based Contrast Agents.



**FRESENIUS
KABI**

caring for life

AJNR

ERRATUM

AJNR Am J Neuroradiol 2014, 35 (7) E5

doi: <https://doi.org/10.3174/ajnr.A3972>

<http://www.ajnr.org/content/35/7/E5>

This information is current as
of April 19, 2024.

In the March 2014 article “Long Insular Artery Infarction: Characteristics of a Previously Unrecognized Entity” by Tamura et al (*AJNR Am J Neuroradiol* 2014;35:466–71, originally published on-line on August 22, 2013, 10.3174/ajnr.A3704), Fig 3 incorrectly contained several identical images. The authors regret this error. The corrected figure and legend are reproduced below.

<http://dx.doi.org/10.3174/ajnr.A3972>

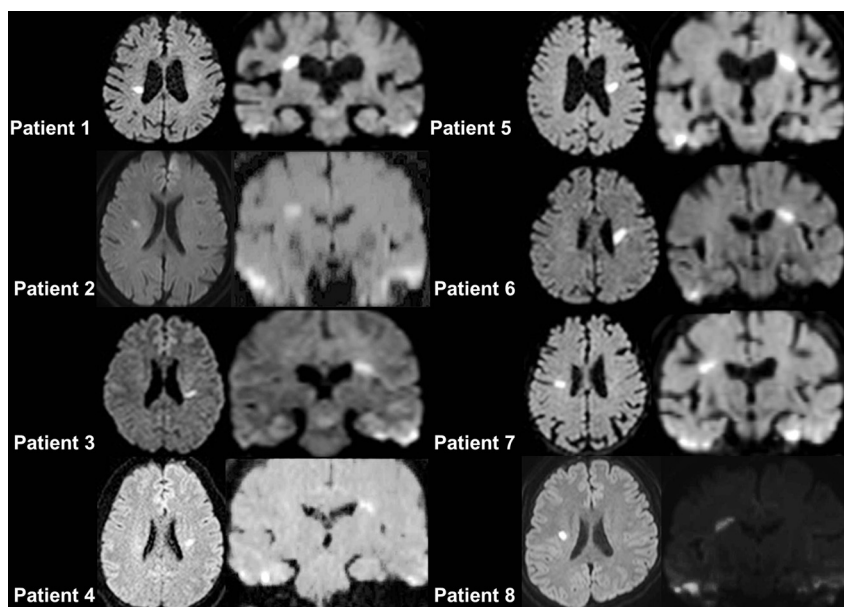


FIG 3. Axial and coronal reconstructed images from DWI of each patient with a long insular artery infarct. Coronal reconstructed images show that infarcts are horizontally located from the anterior horn to the top of the insular cortex and involve the A-I line.