

Are your MRI contrast agents cost-effective?

Learn more about generic Gadolinium-Based Contrast Agents.



FRESENIUS
KABI

caring for life

AJNR

**Neuroradiologic Diagnosis of Minor Leak
prior to Major SAH: Diagnosis by T1-FLAIR
Mismatch**

S. Oda, M. Shimoda, A. Hirayama, M. Imai, F. Komatsu, H.
Shigematsu, J. Nishiyama and M. Matsumae

This information is current as
of April 19, 2024.

AJNR Am J Neuroradiol 2015, 36 (9) 1616-1622

doi: <https://doi.org/10.3174/ajnr.A4325>

<http://www.ajnr.org/content/36/9/1616>

Neuroradiologic Diagnosis of Minor Leak prior to Major SAH: Diagnosis by T1-FLAIR Mismatch

S. Oda, M. Shimoda, A. Hirayama, M. Imai, F. Komatsu, H. Shigematsu, J. Nishiyama, and M. Matsumae

ABSTRACT

BACKGROUND AND PURPOSE: In major SAH, the only method to diagnose a preceding minor leak is to ascertain the presence of a warning headache by interview; however, poor clinical condition and recall bias can cause inaccuracy. We devised a neuroradiologic method to diagnose previous minor leak in patients with SAH and attempted to determine whether warning (sentinel) headaches were associated with minor leaks before major SAH.

MATERIALS AND METHODS: We retrospectively evaluated 127 patients who were admitted with SAH within 48 hours of ictus. Previous minor leak before major SAH was defined as T1WI-detected clearly bright hyperintense subarachnoid blood accompanied by SAH blood on FLAIR images that was distributed over a larger area than bright hyperintense subarachnoid blood on T1WI (T1-FLAIR mismatch).

RESULTS: The incidence of warning headache before SAH was 11.0% (14 of 127 patients, determined by interview). The incidence of T1-FLAIR mismatch (neuroradiologic diagnosis of minor leak before major SAH) was 33.9% (43 of 127 patients). Of the 14 patients with warning headache, 13 had a minor leak diagnosed by T1-FLAIR mismatch at the time of admission. Variables identified by multivariate analysis as significantly associated with minor leak diagnosed by T1-FLAIR mismatch included 80 years of age or older, rebleeding after admission, intracerebral hemorrhage on CT, and mRS scores of 3–6.

CONCLUSIONS: We conclude that warning headaches diagnosed by interview are not a product of recall bias but are the result of actual leaks from aneurysms.

ABBREVIATIONS: BHSB = bright hyperintense subarachnoid blood; ICH = intracerebral hemorrhage

A severe, sudden headache, known as a warning or sentinel headache, sometimes presents during the days or weeks before aneurysmal SAH.^{1,2} These warning headaches have been interpreted as reflecting a minor or warning leak that arises from the first small bleed from an aneurysm before a major SAH.^{3,4} However, in patients who have had major SAH, the presence of a warning headache can only be determined by interview and relies on recall, and there are no established neuroradiologic diagnostic procedures to prove the existence of a previous minor leak. Accurate diagnosis of previous warning headaches by interview is difficult because of the inability to obtain complete information from patients in poor clinical

conditions. One report states that warning headaches are innocuous and unrelated to SAH because an alternative explanation of warning headache is recall bias.⁵

In the subacute phase of SAH (>3–4 days after onset), T1WI depicts subarachnoid blood as high-signal-intensity areas. FLAIR images depict subarachnoid blood as high-signal-intensity areas from the acute-to-subacute phase of SAH. In patients with SAH with T1-detected clearly bright hyperintense subarachnoid blood (BHSB), we proposed a “T1-FLAIR mismatch” to define patients who had experienced a prior minor leak: BHSB on T1WI obtained at admission was considered subacute and FLAIR hyperintense blood that was more extensive than this was considered acute (with the T1 clearly BHSB component defined as the subacute minor leak). Using this diagnostic procedure, we investigated the association between warning headaches and what was considered a minor leak on MR imaging (ie, the first SAH, due to a ruptured aneurysm that occurred before major SAH). Furthermore, we studied the clinical features of patients with SAH with a neuroradiologically diagnosed minor leak before major SAH.

Received December 11, 2014; accepted after revision February 9, 2015.

From the Department of Neurosurgery (S.O., M.S., A.H., M.I., F.K., H.S., J.N.), Tokai University Hachioji Hospital, Tokyo, Japan; and Department of Neurosurgery (M.M.), Tokai University School of Medicine, Kanagawa, Japan.

Please address correspondence to Masami Shimoda, MD, Department of Neurosurgery, Tokai University Hachioji Hospital, 1838 Ishikawa-machi, Hachioji, Tokyo 192-0032, Japan; e-mail: mashimoda-nsu@umin.ac.jp

<http://dx.doi.org/10.3174/ajnr.A4325>

MATERIALS AND METHODS

Patient Population

Subjects were selected from the 210 patients in the nontraumatic aneurysmal acute-phase SAH data base at our hospital between September 2002 and May 2014. Of these patients, 12 receiving conservative therapy instead of surgery because of the absence of brain stem reflexes and 12 with SAH due to ruptured dissecting aneurysms were excluded from this study. The remaining 186 patients underwent acute-stage aneurysmal surgery by craniotomy or an interventional procedure within 72 hours of SAH onset. From these 186 patients, we identified 127 who were admitted within 48 hours of SAH onset and underwent adequate MR imaging, including DWI, FLAIR imaging, T1WI, and CT, on admission. These 127 patients with SAH had stable vital signs reflecting adequate respiration and circulation and underwent serial MR imaging and CT after admission. All MR imaging studies were preceded by the procurement of informed consent by the patient and/or their relative. Initial MR imaging on admission was performed before conventional angiographic, surgical, or endovascular procedures in all cases.

Clinical and imaging records were evaluated retrospectively. Study approval was obtained from the Institutional Review Board for Clinical Research at our university.

Imaging Protocol

For patients with aneurysmal SAH, we routinely performed serial MR imaging on admission, within 2–7 days after surgery, and before patients were discharged. Serial MR imaging was performed for the evaluation of primary brain damage, surgical complications, and ischemic lesions due to vasospasm. At all time points, serial MR imaging included axial conventional T1WI, FLAIR, DWI, and MRA and was performed by using a 1.5T superconducting magnet (Signa Excite or HDx; GE Healthcare, Milwaukee, Wisconsin) with a quadrature head coil. Pulse sequences were as follows: FLAIR (TR/TE, 8000/120 ms; TI, 2000 ms; section thickness/section gap, 7.0/1.0 mm; FOV, 24 × 24 cm; NEX, 1; matrix, 256 × 224), T1WI (TR/TE, 2000/24 ms; TI, 750 ms; section thickness/section gap, 7.0/1.0 mm; FOV, 24 × 24 cm; NEX, 2; matrix, 256 × 192), and 3D time-of-flight MRA (TR/TE, 27/6.8 ms; flip angle, 16°; bandwidth, 14.7 Hz; FOV, 18 × 18 cm; slab thickness, 70 mm; section thickness, 1.2 mm; matrix 256 × 192; NEX, 1). MR imaging was completed within 13–15 minutes. Contrast material such as gadolinium was not used in this study. In the evaluation of FLAIR images, we carefully distinguished the disease or pathologic condition accompanied by hyperintensity in the subarachnoid space on FLAIR images from artifacts such as CSF pulsation or metallic artifacts, infectious meningitis, and leptomeningeal metastasis or anastomosis. For the subjects in this study, we did not perform highly concentrated oxygen inhalation before or at the time of the MR imaging.

Plain CT scans were obtained in all patients in whom SAH was diagnosed by MR imaging on admission. The CT section thickness was 4 mm. 3D CTA was performed in all patients to identify ruptured aneurysms and estimate major-vessel early vasospasm.

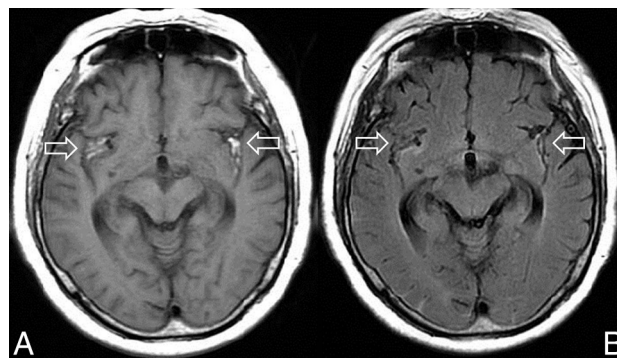


FIG 1. A 77-year-old woman with a ruptured right middle cerebral artery aneurysm who was admitted 5 days after onset. T1WI on admission shows BHSB in the bilateral Sylvian fissure (A, arrows) that matches the blood distribution on the FLAIR image (B, arrows). These findings are typical of subacute SAH with T1-FLAIR-matched SAH that was not associated with rebleeding. Reprinted with permission from Shimoda M. Neuroimaging for headache. *Journal of Clinical and Experimental Medicine (IGAKU NO AYUMI)* 2012;243:1086–94; Ishiyaku Publishers, Inc.

Definition of Variables

The clinical grade of each patient was determined on admission according to the World Federation of Neurological Surgeons grading system.⁶ The severity of SAH was classified by using CT findings according to the Fisher scale.⁷ Warning headache was defined as a sudden and unusually severe headache of at least 1 hour followed by a symptom-free interval or marked improvement of symptoms before admission due to major SAH. The presence of a warning headache was diagnosed by a thorough interview of patients and their relatives or accompanying persons.

Among patients with T1WI-detected clearly BHSB on admission MR imaging, if the distribution of SAH on T1 (T1 BHSB component) almost entirely matched the distribution of SAH on FLAIR (FLAIR hyperintense component), patients were diagnosed with subacute SAH not associated with rebleeding and were thus excluded from the study (Fig 1). In the remaining patients with T1WI-detected BHSB, if the subarachnoid blood on FLAIR images was distributed over a larger area than the BHSB on T1WI (T1-FLAIR mismatch), this finding was taken as an indication of new, acute SAH. T1WI-detected BHSB in these patients represents subacute SAH due to a previous minor leak (Fig 2). If FLAIR-detected SAH had no T1-detected BHSB on admission MR imaging, SAH was considered acute.

Diagnosis of intracerebral hemorrhage (ICH) was defined as a blood collection with a diameter of >1 cm detected by CT. Large intra-Sylvian hematoma was based on the presence of clots of >5 mL. Rebleeding after admission was defined as a definite increase in the volume of blood visible on CT accompanied by sudden exacerbation of consciousness compared with baseline MR imaging or CT on admission. Delayed ischemic neurologic deficits were defined as the appearance of a focal neurologic abnormality following recovery from the immediate postoperative state. CT and MR imaging findings were interpreted by at least 2 senior stroke neurosurgeons (M.S. and S.O.), with 32 and 27 years of experience, respectively. In the case of disagreement between raters, diagnosis was obtained by consensus.

Outcome was assessed at 3 months by using the mRS.⁸ Pa-

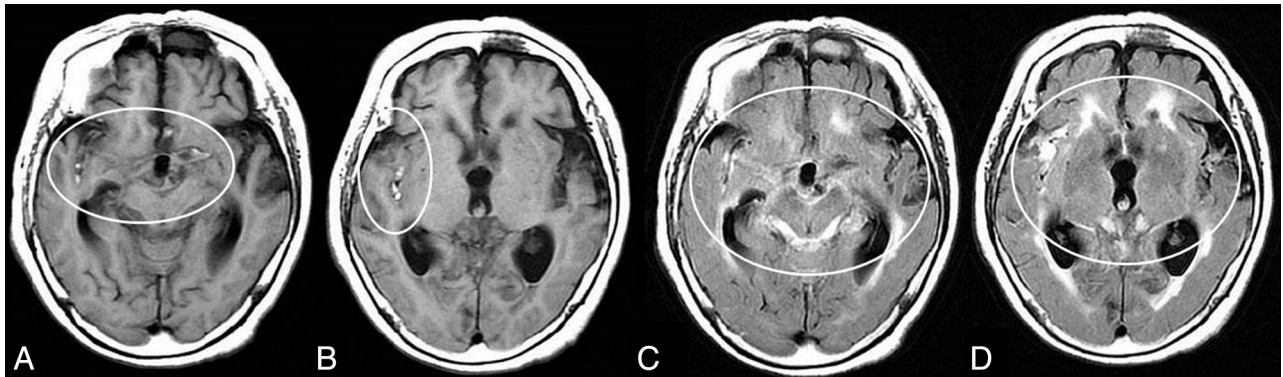


FIG 2. Typical neuroradiologic findings in a patient with minor leak before major SAH attack. Images are from an 80-year-old woman with a ruptured right middle cerebral artery aneurysm. TIWI on admission shows clearly iso- to mildly hyperintense blood obscuring the right Sylvian fissure, in addition to the more conspicuous bright T1 foci (A and B, circles). These findings indicate subacute subarachnoid blood due to a minor leak that occurred before the major attack. FLAIR images on admission show the SAH in the acute phase in the quadrigeminal cistern and left Sylvian fissure (C and D, circles), in addition to the BHSB on TIWI. We defined this as T1-FLAIR mismatch and used it as a neuroradiologic diagnosis of minor leak that occurred before major SAH.

Table 1: Clinical features, neurologic status, and CT features on admission^a

	Total	T1-FLAIR Mismatch		P Value
		Positive	Negative	
No. of patients	127	43 (33.9)	84 (66.1)	
Warning sign				
Positive	14	13 (30.2)	1 (1.2)	<.001
Negative	54	2 (4.7)	52 (61.9)	
Unknown	59	28 (65.1)	31 (36.9)	
Mean age (yr)	61.5 ± 14.2	66.5 ± 13.2	58.9 ± 14.0	.004
Age range (yr)	21–89	40–85	21–89	
Elderly patients				
Older than 80 years	12	10 (23.3)	2 (2.4)	<.001
Female sex	89	32 (74.4)	57 (67.9)	.541
Rebleeding after admission	28	19 (44.2)	9 (1.7)	<.001
WFNS grade on admission				
Grades I–II	97	28 (65.1)	69 (82.1)	.028
Grades IV–V	28	13 (30.2)	15 (17.9)	.120
Fisher group				
Group 3	85	30 (69.8)	55 (65.5)	.550
Intracerebral hemorrhage	25	19 (44.2)	6 (7.1)	<.001
Acute hydrocephalus	61	26 (60.5)	35 (41.7)	.060
Aneurysm site				
Anterior communicating artery	41	9 (20.9)	32 (38.1)	
Anterior cerebral artery	8	4 (9.3)	4 (4.8)	
Internal carotid artery	38	12 (27.9)	26 (31.0)	
Middle cerebral artery	31	17 (39.5)	14 (16.7)	
Posterior circulation	8	0	8 (9.5)	.051
Aneurysm size				
>5 mm	75	31 (72.1)	44 (52.4)	.037
>10 mm	8	3 (7.0)	5 (6.0)	1.000

Note:—WFNS indicates World Federation of Neurological Surgeons.

^a Values are No. (%) unless otherwise stated. The “No. of patients” row shows the percentage of the total number of patients, whereas all other percentages in the “Positive” and “Negative” columns are the percentages of patients with positive and negative findings, respectively.

tients were stratified into favorable outcome (mRS score of 0–2) and unfavorable outcome (mRS score of 3–6). Postoperative management was administered according to previously reported protocols.⁹

Statistical Analysis

The significance of clinical factors potentially associated with minor leak before major attack diagnosed by T1-FLAIR mismatch on admission was determined by the Fisher exact test for categoric

variables and an independent sample 2-tailed Student *t* test for continuous variables. Clinical factors with a significance level of *P* < .05 were subjected to multivariate logistic regression analysis with the occurrence of minor leak diagnosed by T1-FLAIR mismatch on admission as the dependent variable. Statistical analyses were performed by using commercially available software (SPSS, Version 22.0 for Windows; IBM, Armonk, New York).

RESULTS

Warning Headache and T1-FLAIR Mismatch

The incidence of warning headache determined by interview was 11.0% (14/127 patients). Fifty-four patients (42.5%) reported no history of warning headache before admission, and the presence or absence of warning headache was unknown in the remaining 59 patients (Table 1). Among the 14 patients who had a warning headache before the major attack, 12 were younger than 80 years of age.

Adverse events, such as neurologic deterioration or rebleeding from the aneurysm during or immediately after MR imaging did not occur in any patient.

According to neuroradiologic diagnosis by using T1-FLAIR mismatch, the overall incidence of minor leak before major SAH was 33.9% (43/127 patients) (Table 1). Of the 14 patients with a history of warning headache before admission, 13 had previous minor leak diagnosed by T1-FLAIR mismatch on admission. In the remaining patient, the diagnosis of minor leak by T1-FLAIR mismatch was not possible because major SAH developed within 48 hours of the warning headache (minor leak) onset. In the 113 patients without a history of warning headache before admission,

30 (23.6%) had T1-FLAIR mismatch on admission and therefore had a potential minor leak before admission diagnosed by T1-FLAIR mismatch.

Pre- and Postoperative Clinical Factors and T1-FLAIR Mismatch

Tables 1 and 2 summarize the pre- and postoperative clinical factors that were significantly different between patients with and without T1-FLAIR mismatch on admission. Two patients had a major vessel vasospasm detected by 3D CTA or conventional digital subtraction angiography on admission. Both patients had a minor leak diagnosed by T1-FLAIR mismatch. In 35 of the 43 patients with T1-FLAIR mismatch on admission (81.4%), MRA findings were indistinct due to subacute subarachnoid blood caused by the minor leak, particularly in the vessel around the ruptured aneurysm. In the 8 patients with minor leak before admission and without obfuscation of the visibility on MRA, subarachnoid clots on T1WI were small.

In all patients with T1-FLAIR mismatch and ICH, the high-intensity signal on T1WI was present in the cistern around the ruptured aneurysm, and ICH was depicted as a high-intensity signal on FLAIR images (Fig 3).

Ten of the 12 elderly patients with SAH (80 years of age or older) had a minor leak diagnosed by T1-FLAIR mismatch. In 9 of

these 10 elderly patients with T1-FLAIR mismatch, the presence or absence of a warning headache could not be determined by interview due to poor clinical condition.

Multivariate stepwise logistic regression analysis revealed that 80 years of age or older, the presence of rebleeding after admission, ICH on CT, and mRS scores of 3–6 were significantly associated with the diagnosis of minor leak by T1-FLAIR mismatch on admission (Table 3).

DISCUSSION

Incidence of Minor Leak in Previous Reports

According to Jakobsson et al,¹ the reported incidence of warning signs in patients with SAH ranges from 13.5% to 60%. They emphasized that the true incidence of warning signs is difficult to establish because it is difficult or impossible to obtain complete information from patients in poor clinical condition or who die before reaching a hospital.¹ In addition to headaches, a previous study noted several nonspecific symptoms as warning signs,¹⁰ the incidences of which greatly differed.¹ Thus, the diagnosis of a minor leak by interview has poor accuracy, and it is difficult to grasp the clinical significance of an interview-diagnosed minor leak.

Our results revealed that 13 of 14 patients with a history of warning headache before admission had a minor leak before the major attack, as indicated by neuroradiologic images on admission. Therefore, we propose that warning headaches diagnosed by interview are not a product of recall bias but are the result of actual leaks from aneurysms (ie, a first SAH). In the future, neuro-radiologic diagnosis could be used to investigate the clinical significance of minor leaks that cannot be diagnosed by interview.

Neuroradiologic Diagnosis of Minor Leak before Major Attack

The T1 relaxation time of acute subarachnoid blood is relatively shorter

Table 2: Surgery and subsequent events^a

	Total	T1-FLAIR Mismatch		P Value
		Positive	Negative	
No. of patients	127	43 (33.9)	84 (66.1)	
Aneurysm operation				
Craniotomy	105	36 (83.7)	69 (82.1)	1.000
Coiling	22	7 (16.3)	15 (17.9)	
Delayed angiographic vasospasm	35	19 (44.2)	16 (19.0)	.003
DIND	22	16 (37.2)	6 (7.1)	<.001
Infarction due to delayed vasospasm on DWI	30	17 (39.5)	13 (15.5)	.003
Chronic hydrocephalus ^b	54	23 (62.2)	31 (37.8)	.029
mRS score at 3 months				
>3–6	41	28 (65.1)	13 (15.5)	<.001

Note:—DIND indicates delayed ischemic neurologic deficits.

^a The “No. of patients” row shows the percentage of the total number of patients, whereas all other percentages in the “Positive” and “Negative” columns are the percentages of patients with positive and negative findings, respectively.

^b The incidence of chronic hydrocephalus was calculated for the surviving patients.

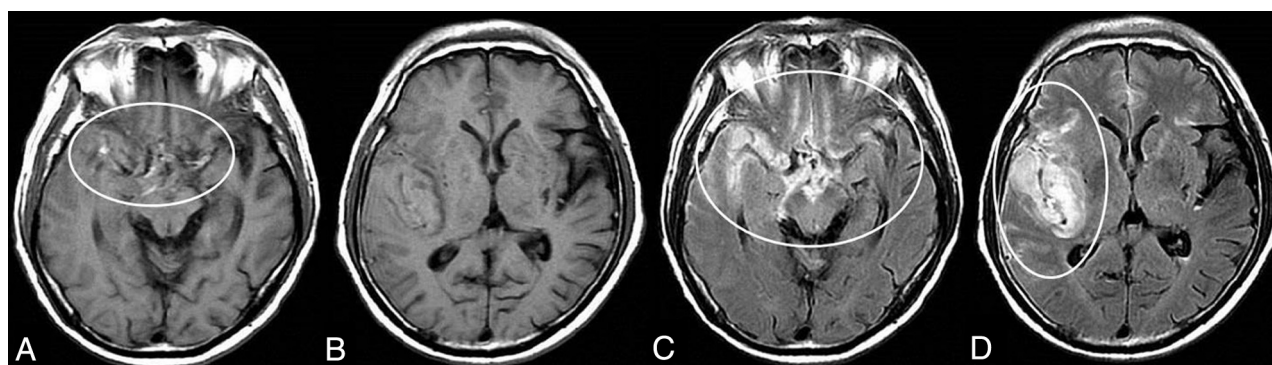


FIG 3. Typical neuroradiologic findings in a case with minor leak before a major SAH attack with intra-Sylvian hematoma. Images are from a 66-year-old woman with a ruptured right middle cerebral artery aneurysm. T1WI shows iso- to mildly hyperintense blood obscuring the right Sylvian fissure and suprasellar cistern, in addition to the more conspicuous bright T1 foci including the neighboring area of the ruptured aneurysm. An intra-Sylvian hematoma is depicted as an iso-intense signal (A circle, B). FLAIR images show the intra-Sylvian hematoma and SAH (right Sylvian fissure, suprasellar and right ambient cistern) as a high-intensity signal, which indicates acute blood (C and D, circles).

Table 3: Results of multivariate logistic regression analysis for the presence of a minor leak before admission diagnosed by T1-FLAIR mismatch

	Odds Ratio	95% CI	P Value
Preoperative clinical factors			
Age older than 80 years	8.475	1.639–43.478	.011
Rebleeding	5.291	2.028–13.889	.001
Associated neuroradiologic findings on admission			
Intracerebral hemorrhage on CT	7.197	2.457–20.833	<.001
Postoperative factors			
mRS score 3–6	6.690	2.548–17.564	<.001

than that of normal CSF.^{11,12} However, T1WI is not useful for the diagnosis of SAH in the acute phase because the degree of T1 shortening replaces normally black CSF space with isointensity. Beyond 4 days after SAH onset, conversion of oxyhemoglobin to methemoglobin increases gradually.^{13,14} Methemoglobin is a paramagnetic substance that causes substantial T1 shortening. Therefore, methemoglobin accumulation causes T1 shortening in the subacute and chronic phases,¹⁵ and T1WI is useful for SAH diagnosis in these phases.

Recently, several authors have reported that FLAIR and T2*-weighted imaging sequences are the most sensitive and useful for detecting SAH in the acute and subacute phases.^{16–18} However, FLAIR and T2*-weighted imaging sequences are not useful for the diagnosis of the onset stage of the subarachnoid blood and cannot differentiate subarachnoid blood in the subacute and acute phases. As mentioned above, because subarachnoid blood is depicted clearly as BHSB on T1WI around 3 to 4 days after SAH onset, any BHSB that is detected by T1WI on admission is blood that is in the subacute phase (ie, occurred before admission). If there is a mismatch between the distribution of subarachnoid blood on T1WI and on FLAIR images, the blood depicted on FLAIR images but not T1WI is the more recent, new acute hemorrhage. This hemorrhage is the second hemorrhage (major attack) that resulted in hospitalization. Therefore, the BHSB detected by T1WI is in the subacute phase and must have occurred before admission. In this study, we interpreted this bleeding as having arisen from a minor leak.

While it is reasonable to label blood as subacute if it is hyperintense on T1WI, acute blood can also show increased T1 signal.^{13,19} Mitchell et al¹⁹ reported a sensitivity of 50% for T1 hyperintensity in the acute stage of SAH. However, their study was of a small sample ($n = 20$) and therefore included some patients in the subacute phase. In these studies, a strict evaluation of the timing of MR imaging relative to the onset of SAH is necessary. The acute phase of SAH is usually defined as within 72 hours of onset. In our study, we excluded patients with SAH who were admitted 48–72 hours after onset because this time window represents a period of oxyhemoglobin-to-methemoglobin conversion. We investigated MR imaging findings only in patients admitted within 48 hours of major SAH.

Subarachnoid blood can be very heterogeneous, and not all subacute blood will be T1 hyperintense. Many factors can affect these characteristics, including subarachnoid blood aging more slowly than cerebral hematomas (due to higher oxygen tension in

CSF) and likely different proportions of CSF and subarachnoid blood compounding the picture. From previous studies with small sample sizes, the sensitivity of T1 hyperintensity in the subacute stage of SAH ranged from 33% to 36%.^{19,20} Bradley²¹ reported that it was difficult to diagnose T1 hyperintensity in the subacute stage of SAH if there was an extremely small hemorrhage because the red blood cells are likely to have been resorbed by the time significant methemoglobin formation would have occurred. That a diagnosis of minor leak by T1-FLAIR mismatch and the evaluation of the exact staging of subarachnoid blood by the MR imaging has limitations is unavoidable.

Methemoglobin has high signal intensity on time-of-flight MRA and obscures signals from vessels and aneurysms.^{22,23} Obfuscation of the visibility of a ruptured aneurysm on MRA becomes a simple neuroradiologic indicator of the presence of subarachnoid blood in the subacute phase due to a minor leak. Grandin et al²³ reported that phase-contrast MRA could easily overcome these problems of obfuscation in the MRA. However, to limit the duration of the examination, we did not perform phase-contrast MRA.

Minor Leaks in Elderly Patients with SAH

From our results and those of a previous report,²⁴ the incidence of a warning headache before a major attack was low in elderly patients with SAH. However, the frequency of potential minor leak according to T1-FLAIR mismatch was high in elderly patients with SAH. The causes of this result are unknown. We speculate that the age-associated enlargement of the subarachnoid space due to cortical atrophy may be 1 reason for the high incidence of potential minor leaks without warning headache in elderly patients. In other words, because an increase in intracranial pressure may not occur even in the presence of an aneurysmal rupture, symptoms due to minor leak would be milder in elderly patients than in younger patients with SAH. Therefore, it could be relatively rare that elderly patients with SAH go to the hospital at the time of the first attack due to minor leak, and they are often only brought to the hospital for a major SAH attack.

Minor Leaks and ICH due to a Ruptured Aneurysm

Several pathologic studies have reported that ICH due to a ruptured aneurysm occurs by indirect or direct rupture of an aneurysm in the brain.^{25–27} ICH due to indirect rupture in the brain is caused by obstruction of the subarachnoid space due to the presence of blood, fibrin, and fibrous arachnoidal adhesions after previous bleeding.²⁷ By contrast, ICH due to direct rupture into the brain occurs due to the adhesion of the aneurysm sac to the pia mater.^{25,26} One report also suggested that the adhesion of the aneurysm sac to the pia mater may be facilitated by previous bleeding.²⁵ This possibility indicates that the likelihood of ICH due to aneurysm rupture is increased by the presence of a previous hemorrhage, such as a minor leak. Indeed, in our study, in all patients diagnosed with a minor leak and ICH on admission, the high-signal-intensity lesion on T1WI corresponded to subarachnoid blood in the neighboring area of the ruptured aneurysm. On the other hand, ICH was depicted as a high-signal-intensity lesion on

FLAIR images and DWI on admission and did not show high signal intensity on T1WI. These findings suggest that the ICH present on admission was a new, acute lesion.

Minor Leaks and Rebleeding

Previous reports have indicated that a warning headache is a risk factor for rebleeding, because a fragile aneurysm that ruptured at the time of the minor leak is prone to rebleeding.^{28,29} Additionally, existing literature indicates that the rate of rebleeding is higher in patients with ICH than in patients without ICH.^{29,30} Our results and previous reports suggest that a minor leak is related closely to ICH and rebleeding. Therefore, in patients who experienced a minor leak before the major SAH, emergency surgery should be performed as soon as possible because these patients have a high probability of both rebleeding and ICH.^{28,29}

Minor Leak and Prognosis

Unexpectedly, several previous studies have reported that the presence of a warning leak had no impact on outcome.^{24,31} In these studies, the true outcome of patients with SAH with a minor leak was difficult to establish because of the difficulty of obtaining complete information on the presence or absence of a warning headache by interview. Jakobsson et al¹ emphasized that outcomes were particularly unfavorable in patients with a short interval (≤ 3 days) from interview-diagnosed warning headache to SAH. Although our neuroradiologic diagnostic procedure for a minor leak cannot be used to identify patients who had < 2 days between minor leak and major SAH, our results, combined with those of Jakobsson et al,¹ emphasize that the prognosis of patients with SAH with a minor leak before a major attack is unfavorable.

Limitations

In patients with an extremely small amount of subacute blood, the sensitivity of the diagnosis of T1 hyperintensity may decrease. In addition, this neuroradiologic diagnostic procedure cannot be used to diagnose minor leaks in patients admitted > 48 hours after major SAH attack. Similarly, this procedure cannot be used to diagnose minor leaks in patients who had major SAH within 48 hours of minor leak onset. It is difficult to distinguish between patients with preceding headache due to the occurrence of dissection without SAH³² and patients with minor leak (SAH) due to ruptured dissecting aneurysms. Therefore, we excluded patients with dissecting cerebral aneurysms from this study.

CONCLUSIONS

In this study, we have proposed a method to define patients who had a prior minor leak: T1-detected BHSB on admission MR imaging was considered subacute, and FLAIR hyperintense blood that was more extensive than this was deemed the acute component. The T1 hyperintense component was defined as a subacute minor leak. We found that almost all patients with warning headache diagnosed by interview had a minor leak according to our

definition. We conclude that warning headaches are not a product of recall bias but are the result of actual leaks.

REFERENCES

1. Jakobsson KE, Saveland H, Hillman J, et al. **Warning leak and management outcome in aneurysmal subarachnoid hemorrhage.** *J Neurosurg* 1996;85:995–99
2. Linn FH, Wijdicks EF, van der Graaf Y, et al. **Prospective study of sentinel headache in aneurysmal subarachnoid haemorrhage.** *Lancet* 1994;344:590–93
3. Gillingham FJ. **The management of ruptured intracranial aneurysms.** *Scott Med J* 1967;12:377–83
4. Drake CG. **Progress in cerebrovascular disease: management of cerebral aneurysm.** *Stroke* 1981;12:273–83
5. Linn FH, Rinkel GJ, Algra A, et al. **The notion of “warning leaks” in subarachnoid haemorrhage: are such patients in fact admitted with a rebleed?** *J Neurol Neurosurg Psychiatry* 2000;68:332–36
6. Drake CG. **Report of World Federation of Neurological Surgeons Committee on a Universal Subarachnoid Hemorrhage Grading Scale.** *J Neurosurg* 1988;68:985–86
7. Fisher CM, Kistler JP, Davis JM. **Relation of cerebral vasospasm to subarachnoid hemorrhage visualized by computerized tomographic scanning.** *Neurosurgery* 1980;6:1–9
8. Shinohara Y, Minematsu K, Amano T, et al. **Modified Rankin scale with expanded guidance scheme and interview questionnaire: interrater agreement and reproducibility of assessment.** *Cerebrovasc Dis* 2006;21:271–78
9. Shimoda M, Hoshikawa K, Shiramizu H, et al. **Early infarction detected by diffusion-weighted imaging in patients with subarachnoid hemorrhage.** *Acta Neurochir (Wien)* 2010;152:1197–205
10. Hauerberg J, Andersen BB, Eskesen V, et al. **Importance of the recognition of a warning leak as a sign of a ruptured intracranial aneurysm.** *Acta Neurol Scand* 1991;83:61–64
11. Spickler E, Lufkin R, Teresi L, et al. **MR imaging of acute subarachnoid hemorrhage.** *Comput Med Imaging Graph* 1990;14:67–77
12. Ogawa T, Inugami A, Shimosegawa E, et al. **Subarachnoid hemorrhage: evaluation with MR imaging.** *Radiology* 1993;186:345–51
13. Bradley WG Jr, Schmidt PG. **Effect of methemoglobin formation on the MR appearance of subarachnoid hemorrhage.** *Radiology* 1985;156:99–103
14. Wahlgren NG, Lindquist C. **Haem derivatives in the cerebrospinal fluid after intracranial haemorrhage.** *Eur Neurol* 1987;26:216–21
15. Ogawa T, Inugami A, Fujita H, et al. **MR diagnosis of subacute and chronic subarachnoid hemorrhage: comparison with CT.** *AJR Am J Roentgenol* 1995;165:1257–62
16. Shimoda M, Hoshikawa K, Shiramizu H, et al. **Problems with diagnosis by fluid-attenuated inversion recovery magnetic resonance imaging in patients with acute aneurysmal subarachnoid hemorrhage.** *Neurol Med Chir (Tokyo)* 2010;50:530–37
17. Noguchi K, Seto H, Kamisaki Y, et al. **Comparison of fluid-attenuated inversion-recovery MR imaging with CT in a simulated model of acute subarachnoid hemorrhage.** *AJNR Am J Neuroradiol* 2000;21:923–27
18. Imaizumi T, Chiba M, Honma T, et al. **Detection of hemosiderin deposition by T2*-weighted MRI after subarachnoid hemorrhage.** *Stroke* 2003;34:1693–98
19. Mitchell P, Wilkinson ID, Hoggard N, et al. **Detection of subarachnoid haemorrhage with magnetic resonance imaging.** *J Neurol Neurosurg Psychiatry* 2001;70:205–11
20. Noguchi K, Ogawa T, Seto H, et al. **Subacute and chronic subarachnoid hemorrhage: diagnosis with fluid-attenuated inversion-recovery MR imaging.** *Radiology* 1997;203:257–62
21. Bradley WG Jr. **MR appearance of hemorrhage in the brain.** *Radiology* 1993;189:15–26
22. Ida M, Kurisu Y, Yamashita M. **MR angiography of ruptured aneurysms in acute subarachnoid hemorrhage.** *AJNR Am J Neuroradiol* 1997;18:1025–32

23. Grandin CB, Cosnard G, Hammer F, et al. **Vasospasm after subarachnoid hemorrhage: diagnosis with MR angiography.** *AJNR Am J Neuroradiol* 2000;21:1611–17
24. Okawara SH. **Warning signs prior to rupture of an intracranial aneurysm.** *J Neurosurg* 1973;38:575–80
25. Tomlinson BE. **Brain changes in ruptured intracranial aneurysm.** *J Clin Pathol* 1959;12:391–99
26. Crompton MR. **Intracerebral haematoma complicating ruptured cerebral berry aneurysm.** *J Neurol Neurosurg Psychiatry* 1962;25:378–86
27. Robertson EG. **Cerebral lesions due to intracranial aneurysms.** *Brain* 1949;72:150–85
28. Beck J, Raabe A, Szelenyi A, et al. **Sentinel headache and the risk of rebleeding after aneurysmal subarachnoid hemorrhage.** *Stroke* 2006;37:2733–37
29. Güresir E, Beck J, Vatter H, et al. **Subarachnoid hemorrhage and intracerebral hematoma: incidence, prognostic factors, and outcome.** *Neurosurgery* 2008;63:1088–93; discussion 1093–94
30. Naidech AM, Janjua N, Kreiter KT, et al. **Predictors and impact of aneurysm rebleeding after subarachnoid hemorrhage.** *Arch Neurol* 2005;62:410–16
31. Juvola S. **Minor leak before rupture of an intracranial aneurysm and subarachnoid hemorrhage of unknown etiology.** *Neurosurgery* 1992;30:7–11
32. Mizutani T. **Natural course of intracranial arterial dissections.** *J Neurosurg* 2011;114:1037–44