

The **next generation** GBCA
from Guerbet is here

Explore new possibilities >

Guerbet | 

© Guerbet 2024 GUOB220151-A

AJNR

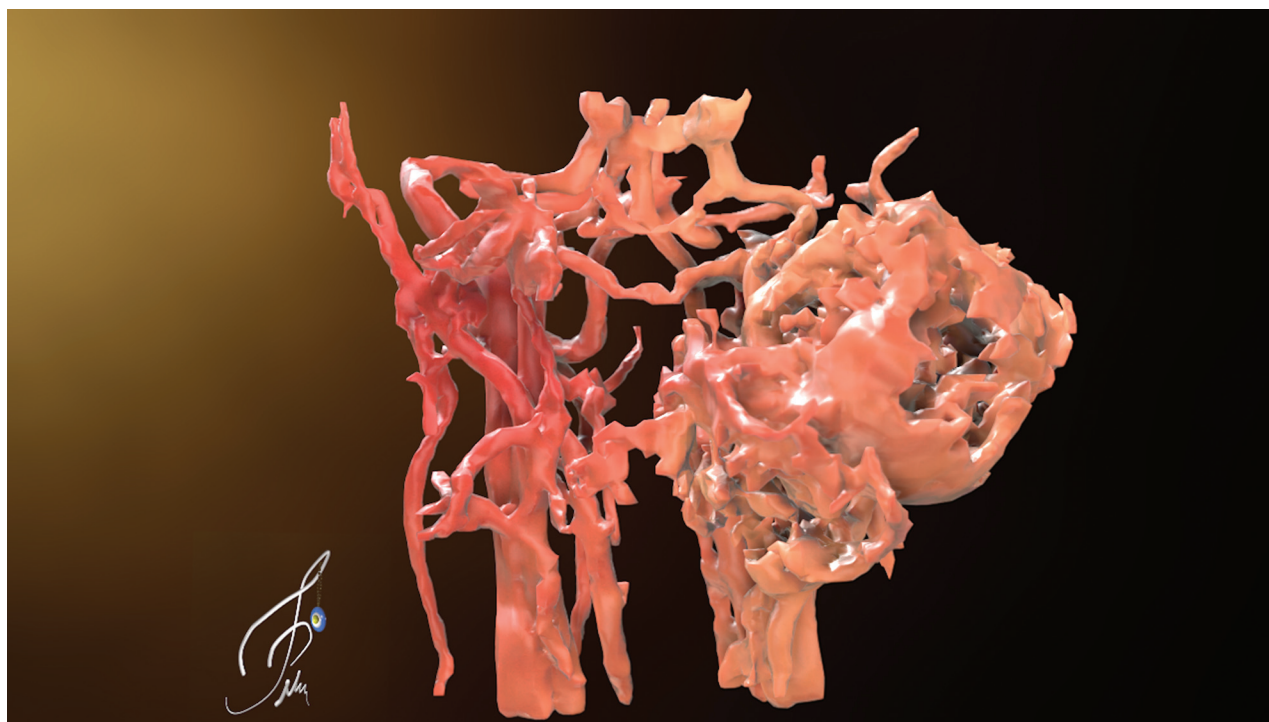
Tuncay Peker

AJNR Am J Neuroradiol 2018, 39 (1) 1

doi: <https://doi.org/10.3174/ajnr.P0046>

<http://www.ajnr.org/content/39/1/1>

This information is current as
of March 20, 2024.



Title: Glomus Tumor of the Carotid Artery with Light Effects. This model was created from axial serial radiologic sections received from a patient with glomus tumor of the carotid artery by using medical reconstruction software (Mimics Research, Materialize HQ, Leuven, Belgium) and then it was transferred to animation software (Cinema 4D, Maxon Computer, Friedrichsdorf, Germany) in object format for the addition of texture, lighting, and visual effects and stored as a high-resolution file.

Tuncay Peker, MD, Gazi University Faculty of Medicine, Department of Anatomy, Ankara, Turkey