

Are your MRI contrast agents cost-effective?

Learn more about generic Gadolinium-Based Contrast Agents.



**FRESENIUS
KABI**

caring for life

AJNR

Carotid Plaque Composition Assessed by CT Predicts Subsequent Cardiovascular Events among Subjects with Carotid Stenosis

E. Choi, E. Byun, S.U. Kwon, N. Kim, C.H. Suh, H. Kwon, Y. Han, T.-W. Kwon and Y.-P. Cho





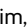
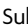

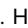
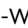
This information is current as of April 18, 2024.

AJNR Am J Neuroradiol 2021, 42 (12) 2199-2206

doi: <https://doi.org/10.3174/ajnr.A7338>

<http://www.ajnr.org/content/42/12/2199>

Carotid Plaque Composition Assessed by CT Predicts Subsequent Cardiovascular Events among Subjects with Carotid Stenosis

 E. Choi,  E. Byun,  S.U. Kwon,  N. Kim,  C.H. Suh,  H. Kwon,  Y. Han,  T.-W. Kwon, and  Y.-P. Cho



ABSTRACT

BACKGROUND AND PURPOSE: Currently, the characteristics of carotid plaques are considered important factors for identifying subjects at high risk of stroke. This study aimed to test the hypothesis that carotid plaque composition assessed by CTA is associated with an increased risk of future major adverse cardiovascular events among asymptomatic subjects with moderate-to-severe carotid artery stenosis.

MATERIALS AND METHODS: This single-center, retrospective cohort study included 194 carotid plaques from 176 asymptomatic subjects with moderate-to-severe carotid artery stenosis. The association of CTA-determined plaque composition with the risk of subsequent adverse cardiovascular events was analyzed.

RESULTS: During a median follow-up of 41 months, the adverse cardiovascular event incidence among 194 carotid plaques was 19.6%. There were significant differences in plaque Hounsfield units ($P < .001$) and spotty calcium presence ($P < .001$) between carotid plaques from subjects with and without subsequent adverse cardiovascular events. Multivariable analysis revealed carotid plaque Hounsfield unit density ($P < .001$) and spotty calcium ($P < .001$) as independent predictors of subsequent adverse cardiovascular events. In association with moderate carotid artery stenosis, the plaque Hounsfield unit values were significantly lower among carotid plaques from subjects who experienced subsequent adverse cardiovascular events ($P = .002$), strokes ($P = .01$), and cardiovascular deaths ($P = .04$); the presence of spotty calcium was significantly associated with the occurrence of adverse cardiovascular events ($P = .001$), acute coronary syndrome ($P = .01$), and cardiovascular death ($P = .04$).

CONCLUSIONS: Carotid plaque Hounsfield unit density and spotty calcium were independent predictors of a greater risk of adverse cardiovascular event occurrence.

ABBREVIATIONS: ACS = acute coronary syndrome; CAS = carotid artery stenosis; DUS = Doppler ultrasound; HR = hazard ratio; IQR = interquartile range; MACE = major adverse cardiovascular event

Cardiovascular disease results in considerable morbidity and mortality worldwide; therefore, the identification of subclinical disease during the asymptomatic phase is an important public health goal.¹ Carotid atherosclerosis has been assessed by Doppler sonography (DUS)-determined intima-media thickness or plaque features for predicting cardiovascular disease, particularly cerebrovascular disease.² Therefore, carotid DUS screening could be a valuable tool for assisting with cardiovascular risk stratification to inform


preventive strategies for asymptomatic subjects with few conventional risk factors.³ However, DUS can be limited by operator-dependent variability, low image resolution, and acoustic shadowing,⁴ therefore, the use of medical imaging to predict future cardiovascular or cerebrovascular events has been extensively investigated.⁵

Currently, a widely accepted concept is that carotid plaques go through a remodeling process, and sometimes atherosclerosis with even low-grade carotid artery stenosis (CAS) may result in cerebrovascular events.⁶ Thus, plaque characteristics other than the degree of stenosis alone may be important for identifying subjects at high risk of stroke.⁷ CTA provides simultaneous information about the degree of stenosis and a more detailed analysis of plaque composition.⁷ Coronary plaque characterization by CTA is a well-described method for predicting major adverse cardiovascular events (MACEs) in different subpopulations,⁸ whereas relatively little experience has been gained with CTA for identifying and quantifying carotid plaque composition associated with MACE

Received November 8, 2020; accepted after revision July 28, 2021.

From the Departments of Surgery (E.C., E.B., H.K., Y.H., T.-W.K., Y.-P.C.), Neurology (S.U.K.), Clinical Epidemiology and Biostatistics (N.K.), and Radiology and Research Institute of Radiology (C.H.S.), University of Ulsan College of Medicine, Asan Medical Center, Seoul, Korea;

Please address correspondence to Yong-Pil Cho, MD, Department of Surgery, University of Ulsan College of Medicine and Asan Medical Center, 88 Olympic-ro 43-gil, Songpa-gu, Seoul 05505, Korea; e-mail: ypcho@amc.seoul.kr

 Indicates article with online supplemental data.

<http://dx.doi.org/10.3174/ajnr.A7338>

risk.⁷ Therefore, this study aimed to test the hypothesis that carotid plaque composition detected by CTA can be used as a surrogate marker for predicting a higher risk of MACEs.

MATERIALS AND METHODS

Study Design and Study Sample

In this single-center, retrospective cohort study, we analyzed data extracted from the medical records of the subjects older than 50 years of age who underwent CTA for health screening or regular follow-up at our hospital. An electronic search was conducted using the hospital's database to identify terms, including "carotid" and "stenosis," on CTA reports.

Between January 2010 and December 2017, eight hundred seventy-six stenotic carotid arteries (876/4294, 20.4%) from 2147 consecutive CTAs were included in this analysis. The degree of CAS was measured according to the NASCET CTA criteria⁹ by an expert neuroradiologist. The exclusion criteria were as follows: 1) mild stenosis (<50% diameter reduction) or total occlusion ($n = 422$); 2) CAS with totally calcified plaque formation ($n = 172$); 3) diffuse stenosis, thin plaque, or artifacts precluding interpretation ($n = 15$); 4) previous ipsilateral carotid endarterectomy or stent placement ($n = 12$); and 5) recent cardiovascular events within 6 months ($n = 61$). Subtotal occlusions ($n = 4$) were included in this study. A total of 194 carotid plaques from 176 asymptomatic subjects without cardiovascular events within 6 months, with reported CAS in the range of 50% to 99% on baseline CTA and additional DUS, were included in the final analysis (Online Supplemental Data): moderate CAS (50%–69% diameter reduction, $n = 101$, 52.1%) and severe CAS (70%–99% diameter reduction, $n = 93$, 47.9%). Clinical indications for CTA were imaging surveillance for known cerebrovascular disease (including intracranial aneurysm or stenosis) and CAS (82%), and neurologic symptoms (including headache and change of mental status) (18%).

The demographics, risk factors of interest, clinical characteristics, and outcomes for all consecutive subjects were recorded in an Excel (Microsoft) database and analyzed retrospectively. Risk factor variables were defined as previously described.³ CTA reports were recorded by dedicated, board-certified neuroradiologists, and CTA images were independently re-evaluated for carotid plaque characterization, including the degree of CAS, plaque Hounsfield unit density, and the presence of ulceration, spotty calcium, napkin-ring sign, and calcium score by 2 specialized vascular surgeons and 1 neuroradiologist. All medication adjustments were made by the subjects' health care providers at our hospital according to each individual's atherosclerosis risk factors, determined using the American College of Cardiology Foundation/American Heart Association guidelines.⁹ Eligible carotid plaques from included subjects were followed from the date that they underwent CTA and were stratified into 2 groups according to the occurrence of MACEs during follow-up: carotid plaques with MACEs and carotid plaques without MACEs. Then, we performed a subgroup analysis of carotid plaques with moderate CAS.

Study Protocol Approvals, Registrations, and Patient Consent

Approval for data collection and publication was obtained from the institutional review board at our hospital (IRB No. 2019–0663),

which waived the requirements for written informed consent because of the study's retrospective design. All methods were performed in accordance with the relevant guidelines and regulations.

CTA Protocol

CTA was performed using a standard protocol (Online Supplemental Data) with the following parameters: 120 kV, automated tube current modulation using a 300-mA reference value, and a 1.0-mm reconstructed section thickness (Somatom Definition AS+ and Edge; Siemens). The scans were conducted from the aortic root to 3 cm above the skull before and after contrast injection. All CTA images were reconstructed in axial, coronal, and sagittal orientations.

Carotid Plaque Characterization

Each plaque was categorized according to the CTA findings as follows: calcified plaque composed predominantly of calcified tissue (>130 HU) (excluded from our analysis), mixed plaque composed of both calcified and noncalcified tissue, and soft plaque composed predominantly of noncalcified tissue. Carotid plaque ulceration was defined as the presence of an obvious, large excavation (>2 mm in depth) on the surface of the plaque.¹⁰ For Hounsfield unit measurements, an ROI of 2 mm² was preselected on the visually least attenuated area of the plaque at the most stenotic level using a width of 850 HU and a level of 300 HU as the window-level settings on contrast-enhanced axial images to distinguish plaque from the vascular lumen. The plaque Hounsfield unit density was measured 5 times from the noncontrast axial images using prepositioned ROIs on the plaque to exclude blooming artifacts (Fig 1). The lowest measured Hounsfield unit value in each plaque was recorded. Calcium score, along with the presence of spotty calcium and the napkin-ring sign—suggested as high-risk plaque features for predicting acute coronary syndrome (ACS)—were also evaluated.^{11,12} Spotty calcium was defined as the presence of calcium in the plaque with a diameter of <3 mm in any direction on curved multiplanar reformation images, occupying only 1 side and a maximum arc below 90° on cross-sectional images.^{11,13} The napkin-ring sign was defined as the presence of low-attenuation plaque surrounded by a ring of high attenuation that was not >130 HU (Fig 2).¹² The calcium score was measured using semiautomated software (Syngo CaScoring; Siemens) and the method described by Agatston et al.¹⁴

Clinical Outcomes

The study outcomes included the occurrence of MACEs, defined as fatal or nonfatal, ipsilateral or contralateral stroke or TIA, ACS, or cardiovascular death. Data on all MACEs were centrally reviewed and blindly adjudicated by an experienced independent neurologist or cardiologist. Events were categorized as "Event," "Limited data," or "No Event" on the basis of chart review. Once an event was not confirmed due to Limited data, more information was collected by face-to-face or direct telephone interviews with the subjects or their families. For quality control, second reviews were conducted by other physicians blinded to the original adjudicated results. In the analysis, we included only ischemic strokes, as previously defined.³ ACS was defined as acute myocardial infarction or unstable angina pectoris, according to the American College of Cardiology/

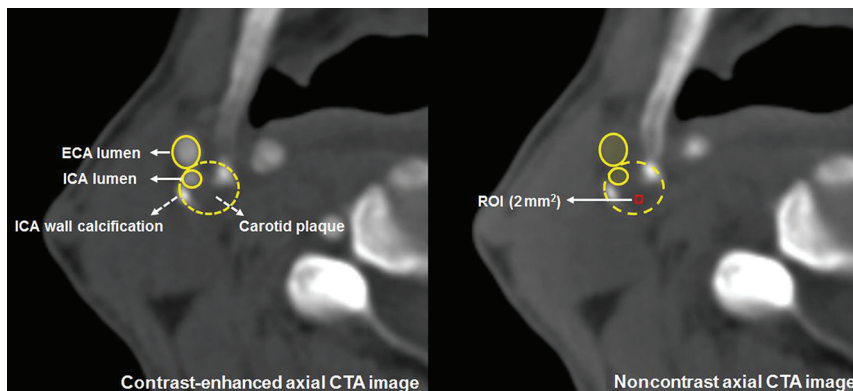


FIG 1. Representative figure of plaque Hounsfield unit value measurement. The plaque Hounsfield unit values were measured from noncontrast axial CTA images. An ROI of 2 mm² was preselected on the visually least attenuated area of the plaque at the most stenotic level of contrast-enhanced axial images. Measurements were performed 5 times from the noncontrast axial images using prepositioned ROIs on the plaque. The lowest Hounsfield unit value in each plaque was recorded. ECA indicates external carotid artery.

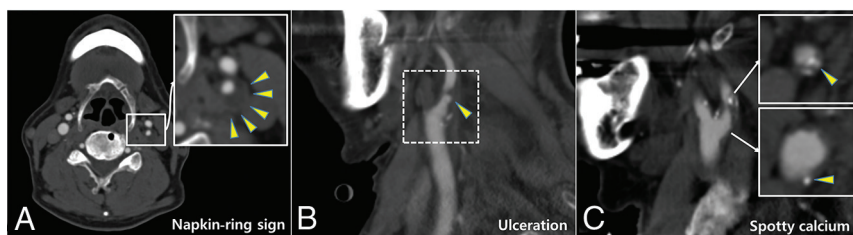


FIG 2. Representative figures of high-risk features of carotid plaque (arrowheads) on CTA. Napkin-ring sign (A), carotid plaque ulceration (B), and spotty calcium (C).

American Heart Association guidelines.¹⁵ Only the first event of each outcome was included in the MACE analysis, whereas each MACE was analyzed individually.

Statistical Analysis

Statistical analysis was performed using PASW Statistics for Windows, Version 18 (<https://www.malavida.com/en/soft/pasw/>); R, Version 3.6.3 (<http://www.r-project.org>); and SAS version 9.4 (SAS Institute). We separately summarized the characteristics of 176 subjects and 194 carotid plaques. Categorical variables are reported as frequencies or percentages, and continuous variables, as means (SDs) or medians and interquartile ranges (IQRs), as appropriate. Cox proportional hazard models, with robust standard errors that accounted for the clustering of subjects' effects, were fitted to identify MACE predictors. The Mann-Whitney rank test was used for comparisons of non-normally distributed continuous variables. Demographic and clinical characteristics that were considered to be associated with MACEs and features of carotid plaques on CTA were included in this analysis. Variables yielding P values $< .1$ from univariable analysis were subjected to multivariable analysis, and hazard ratios (HRs) with 95% CIs were calculated. In the Kaplan-Meier survival analysis, Hounsfield unit values were dichotomized at the median value of the study cohort, and the log-rank test was used to compare the occurrence of MACEs

and the individual MACE components. We performed subgroup analyses limited to carotid plaques from subjects with moderate CAS, wherein we evaluated the association between plaque composition and future MACE occurrences overall as well as the individual MACE components. The interobserver reproducibility of plaque characterization was analyzed through interclass correlation coefficient calculations. Possible interclass correlation coefficients ranged from 0 to 1.00, and measurement reliability was classified as excellent (interclass correlation coefficient > 0.9), good (0.75–0.9), moderate (interclass correlation coefficient = 0.5–0.75), or poor (interclass correlation coefficient < 0.5).¹⁶ P values $< .05$ were considered statistically significant.

RESULTS

After all exclusions based on the predetermined criteria, a total of 194 consecutive carotid plaques from 176 subjects were analyzed. All subjects were diagnosed with moderate-to-severe CAS using CTA and additional DUS. Eligible carotid plaques were stratified into 2 groups according to the occurrence of MACEs as follows: non-MACE group (156 plaques from

142 subjects, 80.4%) and MACE group (38 plaques from 34 subjects, 19.6%). Tables 1 and 2 show the subjects' baseline, clinical, and plaque characteristics. The 2 groups did not differ significantly in terms of demographic characteristics, risk factors, or clinical characteristics, except that subjects in the MACE group were more likely to have atrial fibrillation. There were significant differences in plaque Hounsfield unit values (39.2 [SD, 15.2] versus 27.6 [SD, 12.7], $P < .001$) and spotty calcium presence (14.7% versus 44.7%, $P < .001$) between the 2 groups. The mean calcium score was higher in the MACE group than in the non-MACE group with a nonsignificant trend ($P = .06$), and the degree of CAS was not significantly different between the 2 groups (Online Supplemental Data).

Variables Associated with MACE Occurrence

During follow-up, the MACE incidence among the 194 carotid plaques was 19.6% (38/194). There were 19 strokes (9.8%), 16 ACS diagnoses (8.2%), and 12 cardiovascular deaths (6.2%). According to the per-subject analysis ($n = 176$), there were 16 strokes (9.1%), 14 ACS diagnoses (8.0%), and 12 cardiovascular deaths (6.8%). Table 3 shows the results of the regression analysis in terms of MACE occurrences on a per-carotid plaque basis. In the adjusted models, plaque Hounsfield unit density (HR = 0.96; 95% CI, 0.94–0.98; $P < .001$) and spotty calcium presence (HR =

Table 1: Baseline and clinical characteristics of the study sample, stratified by the occurrence of MACEs^a

Subjects	Total (n = 176)	Non-MACE Group (n = 142)	MACE Group (n = 34)	P Value
Age (yr)	69.3 (SD, 7.6)	69.3 (SD, 7.7)	69.2 (SD, 6.8)	.49
Median (IQR) (yr)	70 (64–75)	69 (64–75)	71 (66–75)	
Male sex	156 (88.6)	126 (88.7)	30 (88.2)	.998
Body mass index (kg/m ²)	24.5 (SD, 3.1)	24.5 (SD, 3.0)	24.4 (SD, 3.4)	.96
Risk factors				
Diabetes mellitus	76 (43.2)	66 (46.5)	10 (29.4)	.096
Hypertension	126 (71.6)	101 (71.1)	25 (73.5)	.80
Dyslipidemia	96 (54.6)	77 (54.2)	19 (55.9)	.60
Current smoking	43 (24.4)	32 (22.5)	11 (32.4)	.42
Past smoking	68 (38.6)	56 (39.4)	12 (35.3)	.91
Atrial fibrillation	9 (5.1)	5 (3.5)	4 (11.8)	.001
Medical history				
History of stroke ^b	56 (31.8)	44 (31.0)	12 (35.3)	.66
History of ACS ^b	30 (17.1)	21 (14.8)	9 (26.5)	.30
Antiplatelet	154 (87.5)	124 (87.3)	30 (88.2)	.72
Statins	142 (80.7)	115 (81.0)	27 (79.4)	.47

^aAny stroke, ACS, or cardiovascular mortality. Continuous data are presented as means (SD) or median (IQR); categorical data are given as (No.) (%).

^bSubjects with any stroke or ACS who had been diagnosed >6 months previously and successfully treated.

Table 2: Plaque characteristics, stratified by the occurrence of MACEs^a

Plaques	Total (n = 194)	Non-MACE Group (n = 156)	MACE Group (n = 38)	P Value
Stenosis (%)	68.6 (SD, 10.8)	67.9 (SD, 10.0)	71.3 (SD, 13.4)	.49
Median (IQR)	68 (60–75)	68 (60–75)	71 (62–80)	
Mixed plaque	129 (66.5)	102 (65.4)	27 (71.1)	.18
Plaque ulceration	15 (7.7)	13 (8.3)	2 (5.3)	.53
Hounsfield unit	36.9 (SD, 15.4)	39.2 (SD, 15.2)	27.6 (SD, 12.7)	<.001
Median (IQR)	36 (28–45)	40 (30–47)	28 (19–36)	
Spotty calcium	40 (20.6)	23 (14.7)	17 (44.7)	<.001
Napkin-ring sign	56 (28.9)	40 (25.6)	16 (42.1)	.09
Calcium score	443.5 (SD, 443.8)	416.3 (SD, 428.0)	551.2 (SD, 493.0)	.06
Median (IQR)	306 (101–639)	294 (74–564)	367 (165–1018)	
Follow-up (mo)	41 (29–60)	41 (30–59)	47 (22–71)	.76
(median) (IQR)				

^aAny stroke, ACS, or cardiovascular mortality. Continuous data are presented as means (SD) or median (IQR); categorical data are given as (No.) (%).

3.97; 95% CI, 2.08–7.60; $P < .001$) were independent predictors of future MACEs.

Analysis of MACEs and Individual MACE Components Based on the Values Reflecting Plaque Hounsfield Unit Density and Spotty Calcium Presence

Cox proportional hazards modeling indicated a lower Hounsfield unit density among carotid plaques from subjects who experienced MACEs (HR = 0.96; 95% CI, 0.95–0.98; $P < .001$), whereas plaque Hounsfield unit density was not associated with all-cause mortality ($P = .14$) (Table 4). The prevalence of spotty calcium observed on CTA was higher among carotid plaques from subjects who experienced any MACE (HR = 4.08; 95% CI, 2.13–7.83; $P < .001$) when the composite outcome was analyzed as a single entity. When the individual MACE manifestations were analyzed separately, ipsilateral stroke ($P = .09$) and cardiovascular mortality ($P = .06$) were not associated with a higher prevalence of spotty calcium (Table 5).

On Kaplan-Meier survival analyses of the cumulative event-free rates based on the dichotomization of Hounsfield units at the median value of the cohort (36 HU), a lower plaque density (<36 HU) was associated with decreased MACE-free ($P = .002$), stroke-free ($P = .038$), and cardiovascular mortality-free ($P = .001$) survival rates, compared with a higher plaque density (≥ 36 HU) (Fig 3). Although lower plaque density trended toward an association with a decreased ACS-free survival rate ($P = .055$), this was not statistically significant.

Subgroup Analysis of the MACE Composite Outcome and the Individual MACE Components among Carotid Plaques from Subjects with Moderate CAS Based on the Plaque Hounsfield Unit Density and Spotty Calcium Presence

The plaque Hounsfield unit values were lower among carotid plaques from subjects who experienced any MACE (HR = 0.95; 95% CI, 0.92–0.98; $P = .002$) and stroke ($P = .01$) and those who died from a cardiovascular cause ($P = .04$). However, ACS ($P = .14$) and all-cause death ($P = .31$) were not associated with plaque Hounsfield unit density (Online Supplemental Data). The prevalence of spotty calcium on CTA was higher among carotid plaques from subjects who experienced any MACE (HR = 5.20; 95% CI, 1.94–13.92; $P = .001$), ACS ($P = .01$), and cardiovascular

death ($P = .04$). However, stroke ($P = .07$) was not associated with the presence of spotty calcium on CTA when analyzed individually (Online Supplemental Data). The low number of MACEs ($n = 18$) limited our ability to include additional variables in the multivariable models.

Interobserver Reliability

Good agreement between observers (2 vascular surgeons) was found in terms of the quantification of carotid plaque density (Hounsfield unit measurement) (interclass correlation coefficient = 0.831; 95% CI, 0.781–0.870) and spotty calcium presence (interclass correlation coefficient = 0.800; 95% CI, 0.734–0.849). There was also strong interobserver reliability between the vascular surgeon and the neuroradiologist for both Hounsfield units (interclass correlation coefficient = 0.862; 95% CI, 0.764–0.913) and spotty calcium (interclass correlation coefficient = 0.830; 95% CI, 0.731–0.931).

Table 3: Cox proportional hazards model for variables associated with MACE^a occurrence

	Model 1 ^b		Model 2 ^c	
	HR (95% CI)	P Value	HR (95% CI)	P Value
Diabetes mellitus	0.60 (0.28–1.24)	.17	NA	NA
Atrial fibrillation	1.07 (0.33–3.48)	.91	NA	NA
Hounsfield unit	0.96 (0.94–0.98)	<.001	0.96 (0.94–0.98)	<.001
Spotty calcium	4.00 (2.00–8.00)	<.001	3.97 (2.08–7.60)	<.001
Napkin-ring sign	0.75 (0.36–1.55)	.45	NA	NA
Calcium score	1.00 (1.00–1.001)	.25	NA	NA

Note:—NA indicates not applicable.

^aAny stroke, ACS, or cardiovascular mortality.

^bModel 1 is multivariable analysis including all variables with $P < .1$ in univariable analysis.

^cModel 2 is multivariable analysis with backward elimination of variables with $P < .1$ in univariable analysis.

Table 4: Cox proportional hazards model for the association of the plaque Hounsfield unit values with the occurrence of the MACE composite outcome and the individual MACE components ($n = 194$)^a

	MACE (–)	MACE (+)	HR (95% CI)	P Value
MACE ^b ($n = 38$)	39.2 (SD, 15.2)	27.6 (SD, 12.7)	0.96 (0.95–0.98)	<.001
Any stroke ($n = 19$)	37.9 (SD, 15.4)	27.8 (SD, 12.0)	0.97 (0.94–0.99)	.01
Ipsilateral stroke ($n = 14$)	37.6 (SD, 15.4)	27.4 (SD, 12.4)	0.96 (0.93–0.99)	.02
ACS ($n = 16$)	37.8 (SD, 15.2)	26.6 (SD, 14.0)	0.96 (0.93–0.99)	.01
Cardiovascular mortality ($n = 12$)	37.7 (SD, 15.4)	24.9 (SD, 8.8)	0.95 (0.92–0.99)	.01
All-cause mortality ($n = 32$)	37.7 (SD, 15.6)	32.8 (SD, 13.9)	0.98 (0.96–1.01)	.14

^aData are presented as mean (SD) and 95% CI of plaque Hounsfield values.

^bAny stroke, ACS, or cardiovascular mortality.

Table 5: Cox proportional hazards model for the association of the presence of spotty calcium on CTA with the occurrence of the MACE composite outcome and the individual MACE components ($n = 194$)^a

	MACE (–)	MACE (+)	HR (95% CI)	P Value
MACE ^b ($n = 38$)	23 (14.7)	17 (44.7)	4.08 (2.13–7.83)	<.001
Any stroke ($n = 19$)	32 (18.3)	8 (42.1)	3.25 (1.30–8.11)	.01
Ipsilateral stroke ($n = 14$)	35 (19.4)	5 (35.7)	2.61 (0.87–7.82)	.09
ACS ($n = 16$)	31 (17.4)	9 (56.3)	6.39 (2.34–17.45)	<.001
Cardiovascular mortality ($n = 12$)	35 (19.2)	5 (41.7)	3.01 (0.95–9.48)	.06
All-cause mortality ($n = 32$)	28 (17.3)	12 (37.5)	2.57 (1.25–5.26)	.01

^aData are presented as (No.) (%) and 95% CI of carotid plaques with spotty calcium detected on CTA.

^bAny stroke, ACS, or cardiovascular mortality.

DISCUSSION

Carotid atherosclerosis is assessed by DUS-determined intima-media thickness or the degree of CAS for predicting cardiovascular disease, particularly cerebrovascular disease.² However, in recent years, it has been shown that both carotid plaque composition and morphology could be important additional features in the risk assessment of patients with carotid artery atherosclerosis.¹⁰ In recent prospective clinical studies for imaging stroke biomarkers, high-risk carotid plaque features appeared to be associated with stroke in patients with moderate CAS.^{17,18} Atherosclerosis is a systemic disease, and the presence of atherosclerosis in a particular vascular bed is frequently associated with disease in other vascular territories. On the basis of prior studies,^{19,20} the correlation between carotid and coronary atherosclerosis is well-established. Lombardo et al²⁰ found that patients with unstable plaques in the coronary arteries also tended to have unstable plaques in the carotid arteries; they posited

that inflammation throughout the vasculature accounted for this finding. Recently, Brunner et al²¹ found that the detection of lipid cores on carotid MR imaging is associated with cardiovascular events. Furthermore, unstable carotid plaques seem to affect not only ipsilateral but also contralateral cerebral symptoms. Therefore, carotid plaques could be a surrogate marker acknowledging the systematic nature of the atherosclerotic processes affecting different vascular beds.²²

Recent studies support the concept that carotid plaques go through remodeling;⁶ some plaques regress and stabilize to be less likely to result in clinical events, whereas some plaques progress to high-risk, unstable plaques with large lipid necrotic cores and thin fibrous caps, which can rupture and cause clinical events.^{23–26} The stability of atherosclerotic plaques largely depends on the composition and morphology of the plaques. Thus, plaque characteristics other than the degree of stenosis alone are important for identifying subjects at higher risk of clinical events, not only for decisions about medical therapy but also for decisions about aggressive interventions.^{5–7} In this regard, the use of noninvasive imaging modalities to detect high-risk plaques and predict their natural evolution has been extensively investigated,^{7,27} and several different imaging modalities, such as CTA, MR imaging, DUS, and PET have been used to assess plaque stability. The advantage of DUS lies in the detection of initial wall alterations, whereas MR imaging can characterize various plaque

components. CTA has basically been used to quantify plaque sub-components, including fatty, mixed, or calcified constituents. Although CTA is known to be less effective than MR imaging for detecting intraplaque hemorrhage or fibrous cap status, Ajduk et al²⁴ found multidetector row CTA to be highly sensitive and moderately specific for detecting intraplaque hemorrhage.^{24,28}

CTA provides simultaneous information about the degree of luminal stenosis, a more detailed analysis of plaque composition,⁷ and high-resolution 3D plaque imaging in a relatively short time. These features make this method particularly suitable for its use in clinical practice.²⁷ Coronary plaque characterization by CTA is well-established for predicting MACEs in different subpopulations, with higher reproducibility than other imaging modalities.⁸ Although many studies have been performed to differentiate carotid plaque compositions and to compare unstable with stable plaques using histologic analysis through Hounsfield unit measurements on

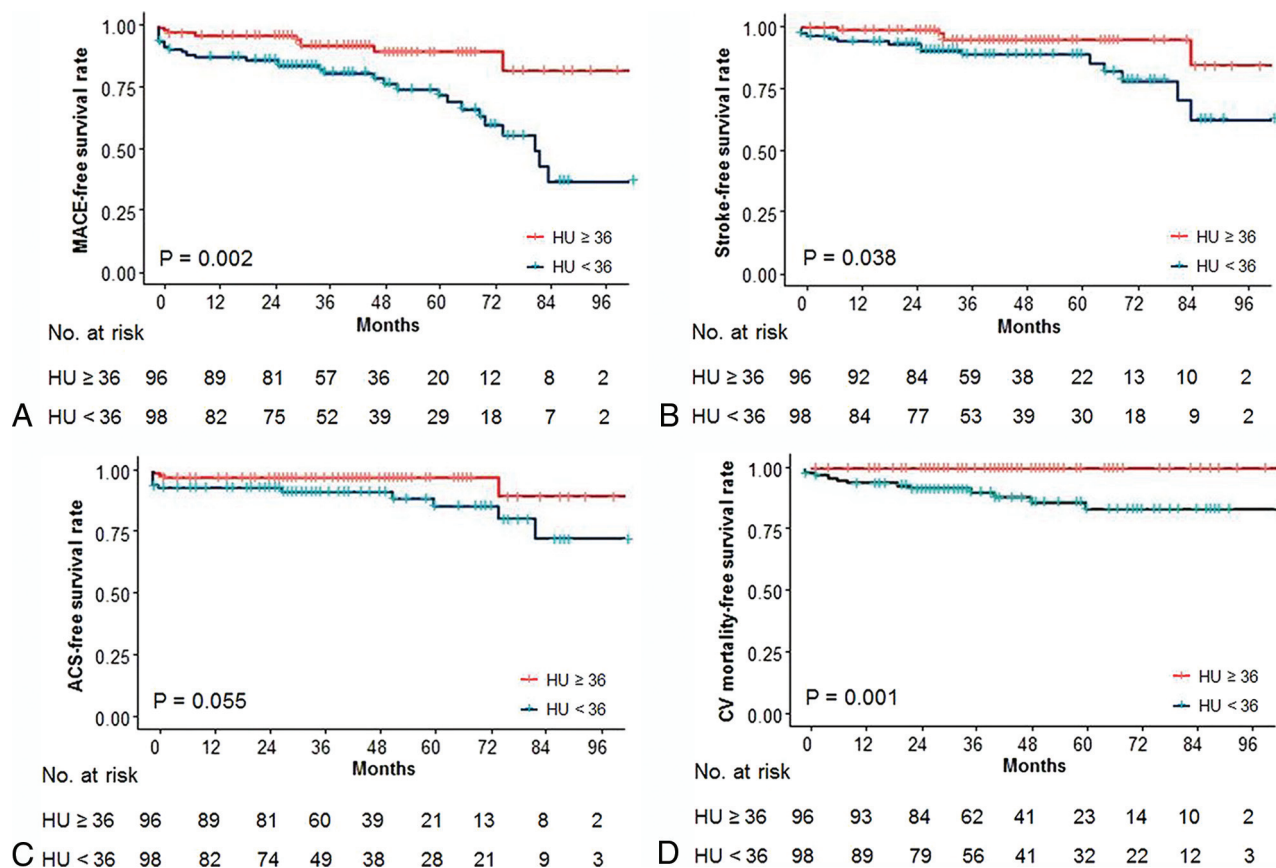


FIG 3. Kaplan-Meier survival analyses of the cumulative event-free rates based on the dichotomization of Hounsfield units at the median value of the cohort (36 HU). Cumulative event-free rates of MACE (A), stroke (B), ACS (C), and CV mortality (D), according to the carotid plaque density. CV indicates cardiovascular.

CTA,^{10,27} few studies have independently focused on the CTA characteristics of different carotid plaques in association with future cardiovascular event risks.

In this study, we restricted our analysis to the 4 plaque characteristics commonly associated with ischemic complications.²⁹ Although spotty calcium detected via coronary CTA has been reported to be an important prognostic factor for ACS,³⁰ the association of spotty calcium in carotid CTA with MACEs has been rarely investigated.³¹ Spotty calcium is likely to exist in lipid-rich plaques and be associated with inflammatory processes and vulnerability, unlike large calcifications in fibrocalcific plaques.^{13,32} Hounsfield unit values are known to reflect plaque composition; lower Hounsfield unit values are associated with higher probabilities of unstable plaques with large lipid cores and intraplaque hemorrhage.^{25,33} It is well accepted that the napkin-ring sign and higher calcium scores in coronary CTA are closely associated with MACEs.^{29,33} Although the napkin-ring sign and calcium score in the carotid plaques were not associated with MACEs in our analysis, we found that plaque Hounsfield unit values and spotty calcium presence were independent predictors of future MACEs, and these could be surrogate markers of the atherosclerotic processes affecting different vascular beds.

The strength of this study was its design, which was suitable for investigating the association between carotid plaque composition and the risk of MACEs among asymptomatic subjects with

CAS. Previous CT-based studies have been cross-sectional, comparing the composition of stable and unstable carotid plaques or symptomatic and asymptomatic plaques.³⁴ Carotid atherosclerosis is a complicated, dynamic process, which persists across time, even in cases of asymptomatic mild CAS. Through a remodeling process, carotid plaques may also stabilize, leading to a phenotype reversal from unstable to stable. Whereas the association between plaque composition and MACE risk has long been suspected, confirmation of this hypothesis requires reliable plaque assessments at baseline, followed by longitudinal assessments of clinical outcomes.³⁴ Cross-sectional studies cannot evaluate chronologic plaque changes; this issue may result in some differences in the assessments of plaque composition.

This study had important limitations that should be acknowledged. First, this was a retrospective analysis subject to selection bias. A number of subjects were excluded, and some clinical information was not available from the medical records. Calcified plaques (>130 HU), mild stenosis (<50%), and plaques with small volumes precluding interpretation were excluded from our analysis due to measuring difficulties. The presence of calcium artifacts is one of the main limitations of CTA because calcifications may obfuscate the correct quantification of the lipid core. Although the role of severe calcification in carotid plaque evaluation still needs to be clarified, several studies have postulated that a high degree of plaque calcification may be considered a

protective factor, especially when the tissue is located superficially.²⁷ Despite the controversy,^{35,36} higher carotid calcium scores seem to be associated with higher MACE risk.³³ In our analysis, the mean calcium score was higher in the MACE group than in the non-MACE group, with a nonsignificant trend. However, higher carotid calcium scores were not associated with higher MACE risk.

Second, plaque Hounsfield unit density was measured via manual positioning of the ROIs. Although there was good agreement among observers in our analysis, manual ROI placement is time-consuming and may be subject to operator bias and beam-hardening artifacts from surrounding tissue. Previous studies have suggested various techniques for selecting ROIs to measure carotid plaque Hounsfield unit values.^{24,37} Clinical feasibility and reproducibility are important for carotid plaque analyses. Manual selection of larger ROIs is difficult for irregularly shaped or circumferential carotid plaques,³⁸ which are more at risk of being affected by adjacent tissue densities, and manual selection is more operator-dependent. Although manual ROI positioning may be inferior to automatic or semiautomatic ROI measurement using plaque-analysis software,^{27,34,39} it is advantageous over measurement using plaque-analysis software in terms of feasibility and widespread availability.²⁸ Third, we did not assess plaque volume as an independent predictor of MACEs. Fourth, the plaque Hounsfield unit density did not fully reflect the density of the entire plaque because we measured the Hounsfield unit values at minimally attenuated areas of the plaques at the most stenotic level. Finally, as with all observational studies, we cannot draw conclusions about causality, and our results should be considered as hypothesis-generating rather than definitive.

CONCLUSIONS

Despite all of these limitations and the debate regarding plaque interpretation by CTA, this pilot study provided evidence of an association between the state of carotid plaque composition, as evaluated by CTA, and the future risk of MACEs among subjects with asymptomatic CAS. The lower the carotid plaque Hounsfield unit density was, the higher was the probability that the artery was associated with the subsequent occurrence of a MACE; spotty calcium in the carotid plaque was an independent and significant predictor of greater subsequent MACE risk. The determination of plaque composition by CTA can provide valuable information for predicting the natural behavior of carotid plaques causing moderate to severe stenosis.

REFERENCES

1. Baber U, Mehran R, Sartori S, et al. **Prevalence, impact, and predictive value of detecting subclinical coronary and carotid atherosclerosis in asymptomatic adults: the BioImage study.** *J Am Coll Cardiol* 2015;65:1065–74 [CrossRef Medline](#)
2. Lahoz C, Mostaza JM. **Atherosclerosis as a systemic disease.** *Rev Esp Cardiol* 2007;60:184–95 [CrossRef](#)
3. Kwon H, Kim HK, Kwon SU, et al. **Risk of major adverse cardiovascular events in subjects with asymptomatic mild carotid artery stenosis.** *Sci Rep* 2018;8:4700 [CrossRef Medline](#)
4. Sutton-Tyrrell K, Wolfson SK, Thompson T, et al. **Measurement variability in duplex scan assessment of carotid atherosclerosis.** *Stroke* 1992;23:215–20 [CrossRef Medline](#)
5. Spence JD. **Cerebrovascular disease: Identifying high-risk patients from carotid plaque composition.** *Nat Rev Cardiol* 2010;7:426–28 [CrossRef Medline](#)
6. Saba L, Sanfilippo R, Sanna S, et al. **Association between carotid artery plaque volume, composition, and ulceration: a retrospective assessment with MDCT.** *AJR Am J Roentgenol* 2012;199:151–56 [CrossRef Medline](#)
7. Kwee RM, van Oostenbrugge RJ, Hofstra L, et al. **Identifying vulnerable carotid plaques by noninvasive imaging.** *Neurology* 2008;70:2401–09 [CrossRef Medline](#)
8. Christiansen MK, Jensen JM, Nørgaard BL, et al. **Coronary plaque burden and adverse plaque characteristics are increased in healthy relatives of patients with early onset coronary artery disease.** *JACC Cardiovasc Imaging* 2017;10:1128–35 [CrossRef Medline](#)
9. Brott TG, Halperin JL, Abbara S, et al; American Academy of Neurology and Society of Cardiovascular Computed Tomography. **2011 ASA/ACCF/AHA/AANN/AANS/ACR/ASNR/CNS/SAIP/SCAI/SIR/SNIS/SVM/SVS guideline on the management of patients with extracranial carotid and vertebral artery disease: executive summary.** *Stroke* 2011;42:e420–63 [CrossRef Medline](#)
10. Wintermark M, Jawadi SS, Rapp JH, et al. **High-resolution CT imaging of carotid artery atherosclerotic plaques.** *AJNR Am J Neuroradiol* 2008;29:875–82 [CrossRef Medline](#)
11. Mosleh W, Adib K, Natdanai P, et al. **High-risk carotid plaques identified by CT-angiogram can predict acute myocardial infarction.** *Int J Cardiovasc Imaging* 2017;33:561–68 [CrossRef Medline](#)
12. Otsuka K, Fukuda S, Tanaka A, et al. **Napkin-ring sign on coronary CT angiography for the prediction of acute coronary syndrome.** *JACC Cardiovasc Imaging* 2013;6:448–57 [CrossRef Medline](#)
13. Zhang F, Yang L, Gan L, et al. **Spotty calcium on cervicocerebral computed tomography angiography associates with increased risk of ischemic stroke.** *Stroke* 2019;50:859–66 [CrossRef Medline](#)
14. Agatston AS, Janowitz WR, Hildner FJ, et al. **Quantification of coronary artery calcium using ultrafast computed tomography.** *J Am Coll Cardiol* 1990;15:827–32 [CrossRef Medline](#)
15. Anderson JL, Adams CD, Antman EM, et al; American Heart Association Task Force on Practice Guidelines (Writing Committee to Revise the 2002 Guidelines for the Management of Patients With Unstable Angina/Non-ST-Elevation Myocardial Infarction); American College of Emergency Physicians; Society for Cardiovascular Angiography and Interventions; Society of Thoracic Surgeons; American Association of Cardiovascular and Pulmonary Rehabilitation; Society for Academic Emergency Medicine. **ACC/AHA 2007 guidelines for the management of patients with unstable angina/non-ST-elevation myocardial infarction: a report of the American College of Cardiology/American Heart Association Task Force on Practice Guidelines (Writing Committee to Revise the 2002 Guidelines for the Management of Patients With Unstable Angina/Non-ST-Elevation Myocardial Infarction) developed in collaboration with the American College of Emergency Physicians, the Society for Cardiovascular Angiography and Interventions, and the Society of Thoracic Surgeons endorsed by the American Association of Cardiovascular and Pulmonary Rehabilitation and the Society for Academic Emergency Medicine.** *J Am Coll Cardiol* 2007;50:e1–157 [CrossRef Medline](#)
16. Koo TK, Li MY. **A guideline of selecting and reporting intraclass correlation coefficients for reliability research.** *J Chiropr Med* 2016;15:155–63 [CrossRef Medline](#)
17. Kopczak A, Schindler A, Bayer-Karpinska A, et al. **Complicated carotid artery plaques as a cause of cryptogenic stroke.** *J Am Coll Cardiol* 2020;76:2212–22 [CrossRef Medline](#)
18. van Dijk AC, Truijman MT, Hussain B, et al. **Intraplaque hemorrhage and the plaque surface in carotid atherosclerosis: the Plaque At RISK Study (PARISK).** *AJNR Am J Neuroradiol* 2015;36:2127–33 [CrossRef Medline](#)
19. Steinvil A, Sadeh B, Bornstein NM, et al. **Impact of carotid atherosclerosis on the risk of adverse cardiac events in patients with and without coronary disease.** *Stroke* 2014;45:2311–17 [CrossRef Medline](#)

20. Lombardo A, Biasucci LM, Lanza GA, et al. **Inflammation as a possible link between coronary and carotid plaque instability.** *Circulation* 2004;109:3158–63 [CrossRef Medline](#)
21. Brunner G, Virani SS, Sun W, et al. **Associations between carotid artery plaque burden, plaque characteristics, and cardiovascular events: the ARIC Carotid Magnetic Resonance Imaging study.** *JAMA Cardiol* 2021;6:79–86 [CrossRef Medline](#)
22. Uchiyama S, Goto S, Matsumoto M, et al. **Cardiovascular event rates in patients with cerebrovascular disease and atherothrombosis at other vascular locations: results from 1-year outcomes in the Japanese REACH Registry.** *J Neurol Sci* 2009;287:45–51 [CrossRef Medline](#)
23. Libby P, Ridker PM, Hansson GK. **Progress and challenges in translating the biology of atherosclerosis.** *Nature* 2011;473:317–25 [CrossRef Medline](#)
24. Ajduk M, Pavic L, Bulimbasic S, et al. **Multidetector-row computed tomography in evaluation of atherosclerotic carotid plaques complicated with intraplaque hemorrhage.** *Ann Vasc Surg* 2009;23:186–93 [CrossRef Medline](#)
25. Nandalur KR, Baskurt E, Hagspiel KD, et al. **Calcified carotid atherosclerotic plaque is associated less with ischemic symptoms than is noncalcified plaque on MDCT.** *AJR Am J Roentgenol* 2005;184:295–98 [CrossRef Medline](#)
26. Singh N, Marko M, Ospel JM, et al. **The risk of stroke and TIA in nonstenotic carotid plaques: a systematic review and meta-analysis.** *AJNR Am J Neuroradiol* 2020;41:1453–59 [CrossRef Medline](#)
27. Veraldi GF, Nocini PF, Eccher A, et al. **Correlation between MDCTA and carotid plaque histological heterogeneity: a pilot study.** *Eur J Vasc Endovasc Surg* 2018;56:7–14 [CrossRef Medline](#)
28. Saba L, Yuan C, Hatsukami TS, et al; Vessel Wall Imaging Study Group of the American Society of Neuroradiology. **Carotid Artery Wall Imaging: Perspective and Guidelines from the ASNR Vessel Wall Imaging Study Group and Expert Consensus Recommendations of the American Society of Neuroradiology.** *AJNR Am J Neuroradiol* 2018;39:E9–31 [CrossRef Medline](#)
29. Michel JB, Martin-Ventura JL, Nicoletti A, et al. **Pathology of human plaque vulnerability: mechanisms and consequences of intraplaque hemorrhages.** *Atherosclerosis* 2014;234:311–19 [CrossRef Medline](#)
30. Puchner SB, Liu T, Mayrhofer T, et al. **High-risk plaque detected on coronary CT angiography predicts acute coronary syndromes independent of significant stenosis in acute chest pain: results from the ROMICAT-II trial.** *J Am Coll Cardiol* 2014;64:684–92 [CrossRef Medline](#)
31. Zheng C, Yan S, Fu F, et al. **Cervicocephalic spotty calcium for the prediction of coronary atherosclerosis in patients with acute ischemic stroke.** *Front Neurol* 2021;12:655156 [CrossRef Medline](#)
32. Halak S, Östling G, Edsfieldt A, et al. **Spotty carotid plaques are associated with inflammation and the occurrence of cerebrovascular symptoms.** *Cerebrovasc Dis Extra* 2018;8:16–25 [CrossRef Medline](#)
33. Gepner AD, Young R, Delaney JA, et al. **Comparison of carotid plaque score and coronary artery calcium score for predicting cardiovascular disease events: the multi-ethnic study of atherosclerosis.** *J Am Heart Assoc* 2017;6:e0051111179 [CrossRef Medline](#)
34. Chrencik MT, Khan AA, Luther L, et al. **Quantitative assessment of carotid plaque morphology (geometry and tissue composition) using computed tomography angiography.** *J Vasc Surg* 2019;70:858–68 [CrossRef Medline](#)
35. Yoon WJ, Crisostomo P, Halandras P, et al. **The use of the Agatston calcium score in predicting carotid plaque vulnerability.** *Ann Vasc Surg* 2019;54:22–26 [CrossRef Medline](#)
36. Katano H, Mase M, Nishikawa Y, et al. **Calcified carotid plaques show double symptomatic peaks according to agatston calcium score.** *J Stroke Cerebrovasc Dis* 2015;24:1341–50 [CrossRef Medline](#)
37. Haraguchi K, Houkin K, Koyanagi I, et al. **Evaluation of carotid plaque composition by computed tomography angiography and black blood magnetic resonance image.** *Interv Neuroradiol* 2008;14:39–43 [CrossRef Medline](#)
38. Eesa M, Hill MD, Al-Khathaami A, et al. **Role of CT angiographic plaque morphologic characteristics in addition to stenosis in predicting the symptomatic side in carotid artery disease.** *AJNR Am J Neuroradiol* 2010;31:1254–60 [CrossRef Medline](#)
39. Caetano Dos Santos FL, Kolasa M, Terada M, et al. **VASIM: an automated tool for the quantification of carotid atherosclerosis by computed tomography angiography.** *Int J Cardiovasc Imaging* 2019;35:1149–59 [CrossRef Medline](#)