

Are your **MRI contrast agents** cost-effective?

Learn more about generic **Gadolinium-Based Contrast Agents**.



**FRESENIUS  
KABI**

caring for life

**AJNR**

**Heat Stroke: Increased Signal Intensity in the  
Bilateral Cerebellar Dentate Nuclei and  
Splenum on Diffusion-Weighted MR  
Imaging**

J.S. Lee, J.C. Choi, S.-Y. Kang, J.-H. Kang and J.-K. Park

This information is current as  
of April 17, 2024.

*AJNR Am J Neuroradiol* published online 29 January 2009  
<http://www.ajnr.org/content/early/2009/01/29/ajnr.A1432.citation>

### Heat Stroke: Increased Signal Intensity in the Bilateral Cerebellar Dentate Nuclei and Splenium on Diffusion-Weighted MR Imaging

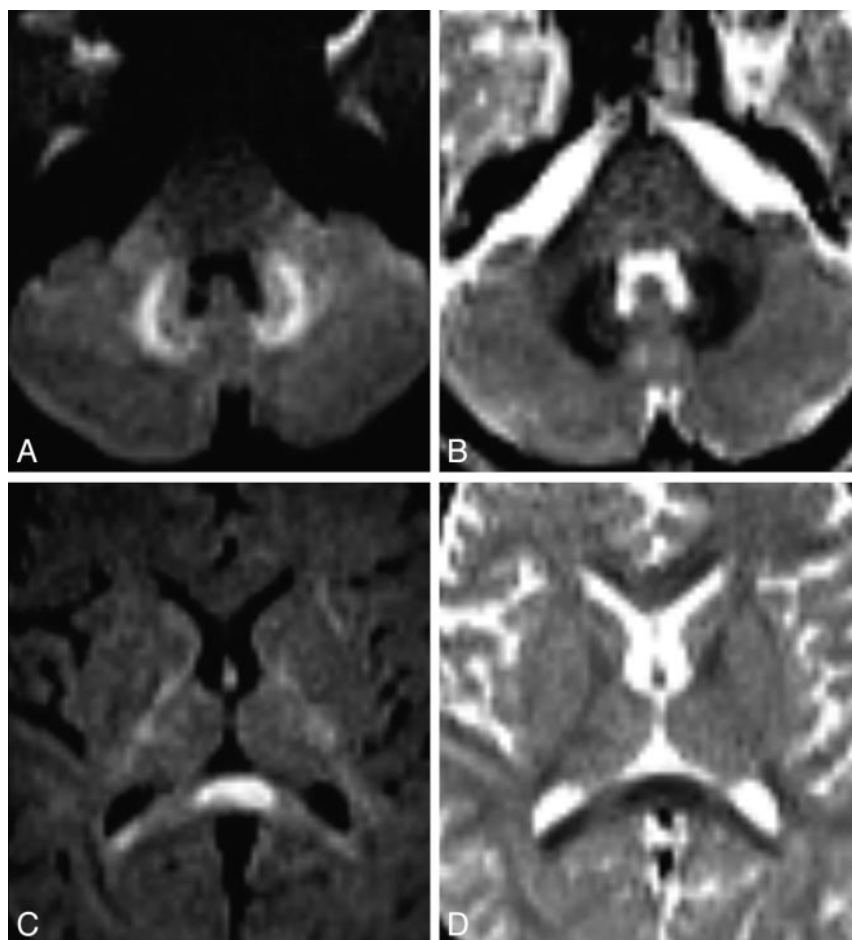
Heat stroke is a critical illness characterized by hyperthermia (elevated core body temperature  $>40^{\circ}\text{C}$ ) with accompanying life-threatening complications. Previous MR imaging findings of heat stroke included diffuse atrophy of the cerebellum<sup>1</sup>; hyperintense lesions in the cerebellum,<sup>1-3</sup> external capsule and adjacent lateral putamen,<sup>2</sup> medial thalamus,<sup>2</sup> and hippocampus<sup>3</sup>; and patchy cortical lesions in the frontal and parietal lobe.<sup>3</sup> However, to our knowledge, the findings of diffusion-weighted imaging (DWI) and apparent diffusion coefficient (ADC) mapping in patients in the early stage of heat stroke have not been reported. We describe a patient with heat stroke, with increased signal intensity in the cerebellar dentate nuclei and splenium on DWI.

A 41-year-old man was admitted to the hospital in a comatose state, with high fever and respiratory failure. He had been working in

a greenhouse for 3 hours on a hot and humid day just before the admission. DWI and ADC mapping on day 4 revealed restricted water diffusion in the bilateral dentate nuclei ( $312 \times 10^{-6} \text{ mm}^2/\text{s}$ , Fig 1A, -B) and splenium of the corpus callosum ( $338 \times 10^{-6} \text{ mm}^2/\text{s}$ , Fig 1C, -D). T2-weighted imaging (T2WI) showed slightly increased signal intensity only in the splenium of the corpus callosum. Follow-up DWI and T2WI, performed on the 21st day, revealed no signal intensity abnormality. However, the last follow-up MR imaging, performed on the 90th day, revealed cerebellar atrophy.

The present case showed symmetric and bilateral lesions in the splenium and cerebellar dentate nuclei. The involvement of dentate nucleus and splenium in our patient was very similar to the case of metronidazole-induced encephalopathy.<sup>4</sup> Our patient had restricted water diffusion in the cerebellar dentate nuclei and splenium, which suggests that cytotoxic edema occurs early in developing heat stroke. The mechanism of cytotoxic edema in heat stroke is controversial. It may be related to hyperthermia-induced vasoconstriction and result-

ant cerebral ischemia or direct cytotoxicity of heat or both. In our patient, the last follow-up MR imaging, performed on the 90th day, revealed tissue loss in the cerebellar structures. These findings indicate that cytotoxic edema leads to delayed irreversible neuronal damage in the cerebellum. In conclusion, our case demonstrated that heat stroke causes irreversible neuronal damage, especially in cerebellum.



**Fig 1.** Initial DWI and ADC map reveal restricted water diffusion in the bilateral dentate nuclei (A and B) and splenium of the corpus callosum (C and D).

### References

1. Albukrek D, Bakon M, Moran DS, et al. Heat-stroke-induced cerebellar atrophy: clinical course, CT and MRI findings. *Neuroradiology* 1997;39:195-97
2. McLaughlin CT, Kane AG, Auber AE. MR imaging of heat stroke: external capsule and thalamic T1 shortening and cerebellar injury. *AJNR Am J Neuroradiol* 2003;24:1372-75
3. Sudhakar PJ, Al-Hashimi H. Bilateral hippocampal hyperintensities: a new finding in MR imaging of heat stroke. *Pediatr Radiol* 2007;37:1289-91
4. Kim E, Na DG, Kim EY, et al. MR imaging of metronidazole-induced encephalopathy: lesion distribution and diffusion-weighted imaging findings. *AJNR Am J Neuroradiol* 2007; 28:1652-58. Epub 2007 Sep 20

J.S. Lee  
J.C. Choi  
S.-Y. Kang  
J.-H. Kang  
J.-K. Park

Jeju National University College of  
Medicine  
Jeju-do, Korea

DOI 10.3174/ajnr.A1432