

Are your MRI contrast agents cost-effective?

Learn more about generic Gadolinium-Based Contrast Agents.



FRESENIUS
KABI

caring for life

AJNR

A Novel Association between *RASA1* Mutations and Spinal Arteriovenous Anomalies

R. Thiex, J.B. Mulliken, N. Revencu, L.M. Boon, P.E. Burrows, M. Cordisco, Y. Dwight, E.R. Smith, M. Vikkula and D.B. Orbach

This information is current as of April 23, 2024.

AJNR Am J Neuroradiol published online 10 December 2009

<http://www.ajnr.org/content/early/2009/12/10/ajnr.A1907.citation>

ORIGINAL
RESEARCH

R. Thiex
J.B. Mulliken
N. Revencu
L.M. Boon
P.E. Burrows
M. Cordisco
Y. Dwight
E.R. Smith
M. Vikkula
D.B. Orbach

A Novel Association between *RASA1* Mutations and Spinal Arteriovenous Anomalies

BACKGROUND AND PURPOSE: CM-AVM is a recently recognized autosomal dominant disorder associated with mutations in *RASA1*. Arteriovenous lesions have been reported in the brain, limbs, and the face in 18.5% of patients. We report a novel association between *RASA1* mutations and spinal arteriovenous anomalies.

MATERIALS AND METHODS: In a collaborative study, 5 index patients (2 females, 3 males) with spinal AVMs or AVFs and cutaneous multifocal capillary lesions were investigated for the *RASA1* gene mutation.

RESULTS: All 5 patients were found to have *RASA1* mutation (2 de novo, 3 familial), and all had multifocal capillary malformations at birth. Neurologic deficits developed at ages ranging from infancy to early adulthood. All spinal anomalies (2 AVMs at the conus, 1 AVM at the lumbosacral junction, and 1 cervical and 1 cervicothoracic AVF) were complex, extensive, and fast-flow lesions. All patients required treatment based on the clinical and/or radiologic appearance of the lesions.

CONCLUSIONS: To our knowledge, an association of *RASA1* mutation and spinal AVM/AVF has not been described. MR imaging screening of patients with characteristic CMs and neurologic symptoms presenting at a young age may be useful in detecting the presence of fast-flow intracranial or intraspinal arteriovenous anomalies before potentially significant neurologic insult has occurred.

ABBREVIATIONS: ASA = anterior spinal artery; AVF = arteriovenous fistula; AVM = arteriovenous malformation; CM = capillary malformation; GTP = guanosine 5'-triphosphate; HHT = hereditary hemorrhagic telangiectasia; *n*-BCA = *n*-butyl 2-cyanoacrylate; R = right; SWS = Sturge-Weber syndrome

CM-AVM is a newly recognized autosomal dominant disorder caused by mutations in the *RASA1* gene.^{1,2} The *RASA1* gene encodes the protein activator 1 (p120-RasGTPase-activating protein), which is essential for the organization of endothelial cells into highly organized networks,¹ switching the active GTP-bound Ras to the inactive GDP-bound form. Murine *RASA1* knockout embryos exhibit abnormal vascular development.^{3,4} More than 18% (18.5%) of patients with a *RASA1* mutation have a fast-flow anomaly such as an AVM or AVF in the brain (7.1%), face (7.8%), or limbs (3.6%).^{2,5} Previously reported intracranial arteriovenous lesions in CM-AVM are typically macrofistulous, usually presenting with neurologic signs at birth or before 1 year of age.³ Small, usually multifocal, and randomly distributed cutaneous capillary malformations are the most prominent feature in patients with *RASA1* mutations.³ Atypical features of these cutaneous lesions can lead to further diagnostic evaluation for fast-flow anomalies even before these become clinically manifest. As an interdisciplinary and multi-institutional collaboration, the authors identified 5 patients with *RASA1*

mutations and fast-flow anomalies in the spine, to our knowledge, a previously undocumented association.

Materials and Methods

Data from patients were collected from 8 centers located in Europe and North and South America. All 5 patients in the series or their legal guardian provided written informed consent according to a protocol approved by the institutional review board committee of Children's Hospital Boston, Harvard Medical School, Boston, and the ethics committee of the medical faculty of Université catholique de Louvain, Brussels, Belgium. Blood was drawn from each participant for molecular genetic screening performed at the Laboratory of Human Molecular Genetics, de Duve Institute, Université catholique de Louvain. A clinical questionnaire was completed by each referring physician that included extent, location, and temporal course of the cutaneous changes, the onset and severity of neurologic symptoms, the radiologic features of the vascular anomalies, and treatment.

Results

Clinical Features

All patients had capillary malformations at birth (Fig 1); these were multifocal in 3 of the 5 patients. Neurologic symptoms occurred at 16 months of age in 1 patient,⁶ 2 years of age in 1 patient, 4 years of age in 1, 6 years of age in 1, and at 23 years of age in 1 patient. In the 2 cases of upper spine AVF, the patients presented with relatively nonspecific symptoms, such as headache. Patients with lower spine lesions presented with severe sensorimotor deficits and flaccid paralysis with neurogenic bladder, as described in the Table.

Received July 20, 2009; accepted after revision September 9.

From the Departments of Neurointerventional Radiology (R.T., D.B.O.) and Neurosurgery (E.R.S.) and Vascular Anomalies Center, Division of Plastic Surgery (J.B.M.), Children's Hospital Boston, Harvard Medical School, Boston, Massachusetts; Laboratory of Human Molecular Genetics, de Duve Institute (N.R., L.M.B., M.V.), and Center for Vascular Anomalies, Cliniques universitaires Saint-Luc, Division of Plastic Surgery (L.M.B.), Université catholique de Louvain, Brussels, Belgium; Department of Endovascular Surgery (P.E.B.), Roosevelt Hospital, New York, New York; Hospital Nacional de Pediatría (M.C.), Buenos Aires, Argentina; and Kaiser Permanente Medical Center (Y.D.), Honolulu, Hawaii.

Please address correspondence to Darren Benjamin Orbach, MD, PhD, Neurointerventional Radiology, Children's Hospital Boston, Harvard Medical School, 300 Longwood Ave, Boston, MA 02115; e-mail: darren.orbach@childrens.harvard.edu

DOI 10.3174/ajnr.A1907

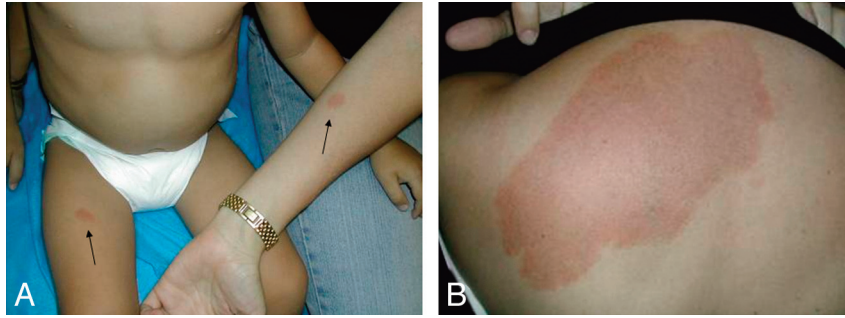


Fig 1. Atypical capillary malformation on the patient's thigh and the mother's forearm (A) and the mother's back (B). The patient's uncle had a history of pontine hemorrhage from brain AVM, and genetic screening for a *RASA1* mutation was positive in this patient

Collaborative collection of patients						
Case No.	Age	Sex	Clinical Signs and Symptoms	Spinal AVM/AVF	Mutation	
1	6	F	2 CMs at birth, new lesions appeared later, most on the extremities and <1 cm; lower extremity weakness (nonambulatory), neurogenic bladder at 4 yr	AVM at conus medullaris (level L1) treated with <i>n</i> -BCA embolization	De novo, c.1386_1387insCTp.Ile463LeufsX21	
2	6	M	Multifocal CMs at birth	AVF supplied by R vertebral artery and thyrocervical trunk	Familial, c.1453 + 1delG, splicing altered	
3	6	M	CM on R plantar foot at birth, macular lesions appeared with time along with motor tics	AVF at level of C7-T1, treated with combined endovascular/surgical approach	De novo, c.2329G>Tp.Glu777X	
4	34	M	Multifocal CMs at birth, acute sensorimotor deficits at 23 yr	Spinal AVM at L5-S1 treated with <i>n</i> -BCA embolization	Familial, c.1717C>Tp.Gln573X	
5	36	F	Multifocal CMs at birth, flaccid paraplegia of lower extremities, and neurogenic bladder at 16 months	AVM at conus medullaris (L2 level), treated surgically	Familial, c.1666_1698 + 15 del, splicing altered	

Genetic Testing

Two patients were found to have a de novo mutation in the *RASA1* gene; the other 3 patients had familial *RASA1* mutations (Table). Only 1 patient (case 3 in the Table) was diagnosed with *RASA1* mutation on the basis of his atypical capillary malformations before he became neurologically symptomatic with severe headaches and intermittent motor tics involving repetitive jaw thrusting.

Radiographic Appearance, Treatment, and Outcome

One patient presented with headaches and motor tics (case 3 in the Table). Given the known presence of the *RASA1* mutation in this patient (Fig 1), there was a low threshold for obtaining cross-sectional imaging, and brain and spine MR imaging revealed marked ectasia of the deep venous system of the posterior fossa and posterior intradural space (Fig 2). Subsequent cerebral and spinal angiography revealed a fast-flow posterior spinal artery pial AVF, and combined endovascular/surgical treatment was undertaken (Figs 3–6).

In the other patient (case 2 in the Table) with cervical AVF, the right vertebral artery and thyrocervical trunk provided the main supply to a complex AVM, which was treated by endovascular methods only (Fig 7). The patient had a good recovery.

In the 2 patients with flaccid paralysis and bladder dysfunction, a fast-flow AVM was identified at the conus, treated surgically in 1 patient and via *n*-BCA embolization in the other. The fifth patient, with severe sensorimotor deficits, had a fast-



Fig 2. Sagittal T2-weighted image of the cervical and upper thoracic spine. Ectatic veins in the posterior intradural space extend from the cervicomedullary junction to T6, causing cervical and thoracic cord compression.

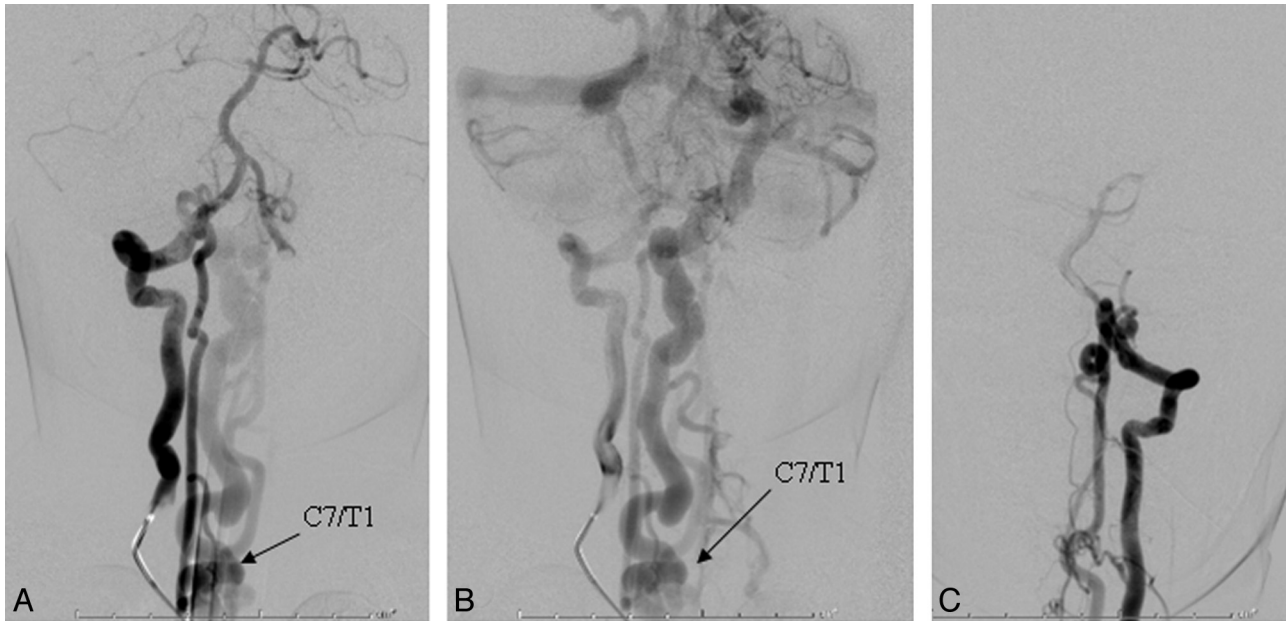


Fig 3. *A*, In a frontal view of the early arterial phase, a right vertebral artery injection is seen to opacify a markedly enlarged right posterior spinal artery arising from the right lateral spinal artery and ending in a direct AVF into an ectatic venous pouch at C7-T1. *B*, Slightly delayed frontal view of the right vertebral artery injection shows rostral reflux of arterialized blood up to the posterior fossa, with marked enlargement of the lateral brain stem venous system. *C*, Frontal view of a left vertebral artery injection demonstrates a near mirror-image configuration, with opacification of the AVF via the left lateral spinal/posterior spinal artery.

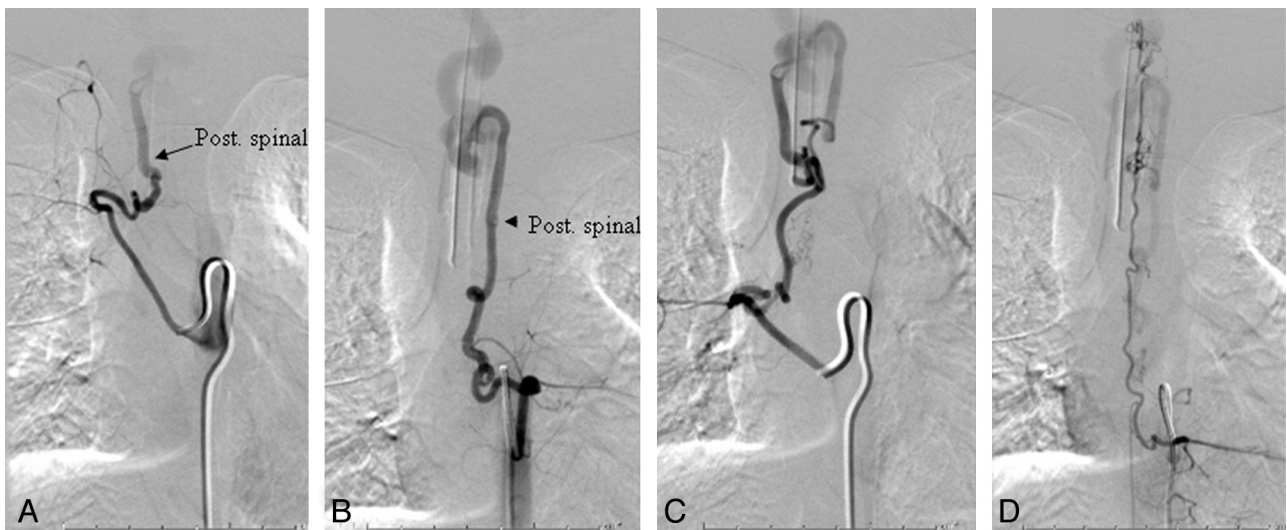


Fig 4. *A*, Injection of the right T7 segmental artery reveals brisk opacification of the AVF via a right posterior spinal branch supplying the fistula from below at the right inferolateral aspect of the venous pouch. *B* and *C*, Supply from below also comes from the left T7 (*B*) and right T8 (*C*) segmental arteries. *D*, Injection of the left T9 segmental artery opacifies the ASA axis, with the artery of Adamkiewicz originating at this level. The ascending ASA axis is enlarged and provides collateral supply to the posterior spinal AVF, via sulcocommissural branches.

flow AVM at the lumbosacral junction, which was treated with glue embolization. All arteriovenous lesions demonstrated a fast-flow pattern on angiography.

Discussion

CM presents as a characteristic macular stain and has a reported incidence of 0.3% in neonates.⁷ This slow-flow lesion consists of dermal capillary venular-like channels that are dilated and/or increased in number.⁷ There are reports of a familial tendency for CM. In a study from the Division of Plastic and Reconstructive Surgery of the Academic Medical Center, Amsterdam, 55 of 280 new patients (19.6%) presenting for treatment had an affected relative.⁸

When these pedigrees were analyzed, there was no discernable mode of inheritance. While the most common presentation of CM is without association with other anomalies, in some patients, CM can herald the presence of an underlying anomaly of the neurovascular axis.

CM-AVM is a newly described syndrome caused by heterozygous mutations in *RASA1*, located on 5q13.3.¹ The capillary stains in this disorder are phenotypically slightly different from the common-variety CM. They are round or oval and pinkish-tan.⁹ When solitary, they range in diameter from very small to several centimeters. Multiple lesions also occur and may continue to appear throughout childhood. Often these lesions are surrounded by a pale halo, and even a small stain

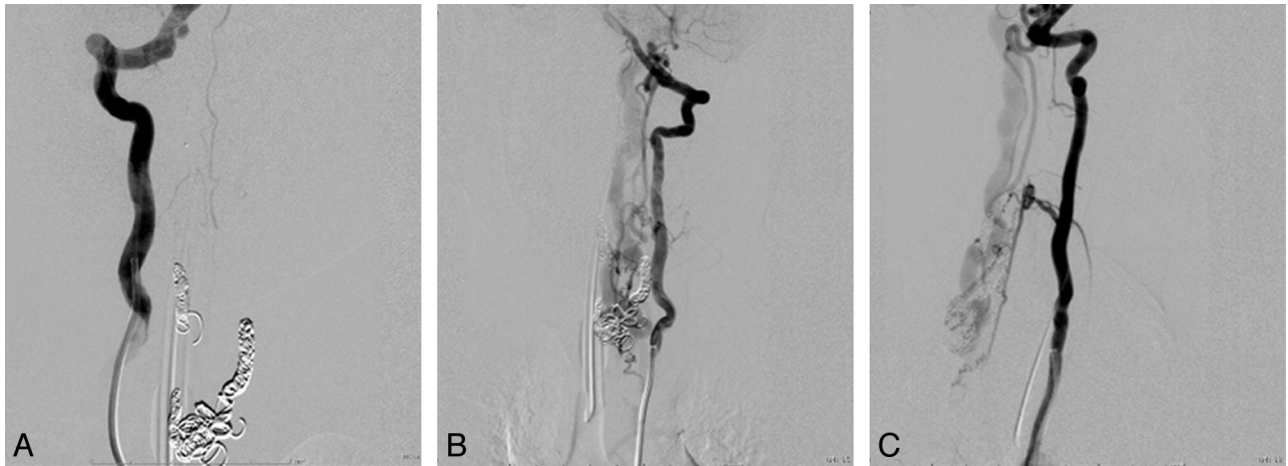


Fig 5. *A*, Following coil embolization, there is no further opacification of the fistula from the right vertebral arterial injection. *A–C*, Segmental branches of the left vertebral artery continue to opacify the AVF, albeit less briskly, as seen in frontal (*A*) and lateral views (*C*).

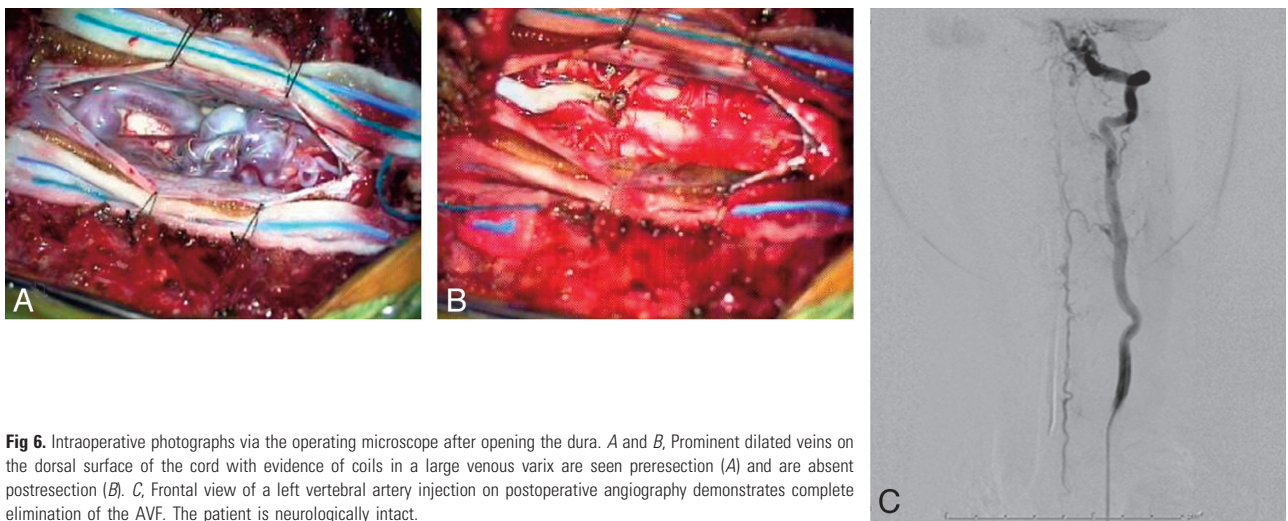


Fig 6. Intraoperative photographs via the operating microscope after opening the dura. *A* and *B*, Prominent dilated veins on the dorsal surface of the cord with evidence of coils in a large venous varix are seen pre-resection (*A*) and are absent post-resection (*B*). *C*, Frontal view of a left vertebral artery injection on postoperative angiography demonstrates complete elimination of the AVF. The patient is neurologically intact.



Fig 7. Frontal views of a right subclavian (*A*) and right vertebral artery (*B*) injection during embolization demonstrate a complex AVF supplied by branches of the right thyrocervical trunk and segmental right vertebral artery branches.

can exhibit a prominent to-fro murmur by hand-held Doppler examination.⁹ These atypical cutaneous CMs occur in association with fast-flow anomalies, namely AVM and AVF, in ap-

proximately 18.5% of affected families.^{1,9} They involve the cutis, subcutis, muscles, or bones. Intracranial manifestations include vein of Galen malformations with symptoms at birth

or pial AVMs or AVFs, which become symptomatic during the first year of life.⁹

To the best of our knowledge, an association of CM-AVM and spinal arteriovenous anomalies has not been described. Macro-AVFs are fast-flow direct shunts, fed by 1 or multiple spinal cord arteries, typically ending directly in a giant venous ectasia (characteristic of these lesions), with secondary drainage into the extrinsic and intrinsic venous system of the cord.¹⁰ Progressive symptoms are a result either of congestion in the intrinsic and extrinsic venous system of the cord or of direct mass effect inflicted by the ecstatic veins. Bleeding from spinal AVFs is seen more frequently in children than in adults.¹⁰ The complexity of these lesions often mandates multidisciplinary treatment, as shown in Figs 3–6.

SWS is the most well-known association of facial CM, often with diffuse capillary staining of the trunk and extremities and ipsilateral vascular anomalies of the leptomeninges and ocular choroid.^{11,12} In SWS, a metameric distribution of the facial and cerebral venous lesions is seen, which is rarely bilateral. A faint upper facial CM may also indicate a unilateral AVM of the retina and intracranial optic pathway, an entity known by the syndromic terms Bonnet-Dechaume-Blanc in the European literature and Wyburn-Mason in the English literature.¹³ This, too, is a metameric syndrome affecting the cerebrofacial territory, giving rise to cerebral and facial AVMs. A circular capillary stain of the occipital scalp is often present with heterotopic neural nodules and the “hair collar” sign.¹⁴ Enjolras et al¹⁵ reported skin anomalies in the cervical area to be indicative of occult spinal dysraphism. CM on the posterior thorax may be a sign of an underlying AVM of the spinal cord.^{16,17} Cobb syndrome is the spinal expression of the metameric AVM syndrome involving skin, bone, and spinal cord. A capillary stain over the lower lumbar region may overlie spinal dysraphism, lipomeningocele, tethered spinal cord, and diastematomyelia.¹⁸

Intracranial AVMs in HHT are usually diagnosed in adulthood, though some pediatric cases have been reported.¹⁹ In contrast to CM-AVM, the liver and lungs are typically involved. The mucocutaneous stains of HHT are radiating or arborizing telangiectasias. Macrofistulous spinal cord AVMs have also been reported in patients with HHT.^{10,20,21} Definite diagnosis of HHT is made clinically if 3 of the 5 Curaçao criteria, established in June 1999 by the Scientific Advisory Board of the HHT Foundation International, are met. The criteria include epistaxis, telangiectasias, visceral AVMs, cerebral or spinal AVMs, and a first-degree relative with HHT.²²

Fast-flow fistulas, both intracranial and in the spinal axis, should be considered in patients with the characteristic CMs, who evidence even minor neurologic symptoms. Once fixed neurologic deficits are manifest, functional recovery is much less likely.²³ The availability of genetic testing will likely result

in an increased reporting incidence of CM-AVM, with 200 individuals thus far identified with *RASA1* mutations.⁹ It is likely that some patients with arteriovenous anomalies of the neural axis, previously labeled as Cobb syndrome or HHT, might, in fact, be more accurately diagnosed with CM-AVM.

References

1. Eerola J, Boon LM, Mulliken JB, et al. **Capillary malformation-arteriovenous malformation: a new clinical and genetic disorder caused by *RASA1* mutations.** *Am J Hum Genet* 2003;73:1240–49
2. Boon LM, Mulliken JB, Vikkula M. ***RASA1*: variable phenotype with capillary and arteriovenous malformations.** *Curr Opin Genet Dev* 2005;15:265–69
3. Henkemeyer M, Rossi DJ, Holmyard DP, et al. **Vascular system defects and neuronal apoptosis in mice lacking Ras GTPase-activating protein.** *Nature* 1995;377:695–701
4. Lapinski PE, Bauler TJ, Brown EJ, et al. **Generation of mice with a conditional allele of the p120 Ras GTPase-activating protein.** *Genesis* 2007;45:762–67
5. Limaye N, Boon LM, Vikkula M. **From germline towards somatic mutations in the pathophysiology of vascular anomalies.** *Hum Mol Genet* 2009;18:R65–74
6. Kaplan P, Hollenberg RD, Fraser FC. **A spinal arteriovenous malformation with hereditary cutaneous hemangiomas.** *Am J Dis Child* 1976;130:1329–31
7. Jacobs AH, Walton RG. **The incidence of birthmarks in the neonate.** *Pediatrics* 1976;58:218–22
8. van der Horst CM, van Eijk TGJ, de Borgie CA. **Hereditary port-wine stains: do they exist?** *Lasers Med Sci* 1999;14:238–43
9. Revencu N, Boon LM, Mulliken JB, et al. **Parkes Weber syndrome, vein of Galen aneurysmal malformation, and other fast-flow vascular anomalies are caused by *RASA1* mutations.** *Hum Mutat* 2008;29:959–65
10. Mandzia JL, terBrugge KG, Faughnan ME, et al. **Spinal cord arteriovenous malformations in two patients with hereditary hemorrhagic telangiectasia.** *Childs Nerv Syst* 1999;15:80–83
11. Terdjman P, Aicardi J, Sainte-Rose C, et al. **Neuroradiological findings in Sturge-Weber syndrome (SWS) and isolated pial angiomas.** *Neuropediatrics* 1991;22:115–20
12. Uram M, Zubillaga C. **The cutaneous manifestations of Sturge-Weber syndrome.** *J Clin Neuroophthalmol* 1982;2:245–48
13. Schmidt D, Pache M, Schumacher M. **The congenital unilateral retinocephalic vascular malformation syndrome (Bonnet-Dechaume-Blanc syndrome or Wyburn-Mason syndrome): review of the literature.** *Surv Ophthalmol* 2008;53:227–49
14. Rogers GF, Mulliken JB, Kozakewich HP. **Heterotopic neural nodules of the scalp.** *Plast Reconstr Surg* 2005;115:376–82
15. Enjolras O, Boukobza M, Jdid R. **Cervical occult spinal dysraphism: MRI findings and the value of a vascular birthmark.** *Pediatr Dermatol* 1995;12:256–59
16. Doppman JL, Wirth FP Jr, DiChiro G, et al. **Value of cutaneous angiomata in the arteriographic localization of spinal-cord arteriovenous malformations.** *N Engl J Med* 1969;281:1440–44
17. Jessen RT, Thompson S, Smith EB. **Cobb syndrome.** *Arch Dermatol* 1977;113:1587–90
18. Guggisberg D, Hadj-Rabia S, Viney C, et al. **Skin markers of occult spinal dysraphism in children: a review of 54 cases.** *Arch Dermatol* 2004;140:1109–15
19. Kadoya C, Momota Y, Ikegami Y, et al. **Central nervous system arteriovenous malformations with hereditary hemorrhagic telangiectasia: report of a family with three cases.** *Surg Neurol* 1994;42:234–39
20. Morgan T, McDonald J, Anderson C, et al. **Intracranial hemorrhage in infants and children with hereditary hemorrhagic telangiectasia (Osler-Weber-Rendu syndrome).** *Pediatrics* 2002;109:E12
21. Rodesch G, Hurth M, Alvarez H, et al. **Spinal cord intradural arteriovenous fistulae: anatomic, clinical, and therapeutic considerations in a series of 32 consecutive patients seen between 1981 and 2000 with emphasis on endovascular therapy.** *Neurosurgery* 2005;57:973–83
22. Shovlin CL, Guttmacher AE, Buscarini E, et al. **Diagnostic criteria for hereditary hemorrhagic telangiectasia (Rendu-Osler-Weber syndrome).** *Am J Med Genet* 2000;91:66–67
23. Cullen S, Alvarez H, Rodesch G, et al. **Spinal arteriovenous shunts presenting before 2 years of age: analysis of 13 cases.** *Childs Nerv Syst* 2006;22:1103–10