

Are your **MRI contrast agents** cost-effective?

Learn more about generic **Gadolinium-Based Contrast Agents**.



**AJNR**

**Is Mechanical Clot Removal or Disruption a Cost-Effective Treatment for Acute Stroke?**

M.N. Nguyen-Huynh and S.C. Johnston

*AJNR Am J Neuroradiol* published online 27 January 2011  
<http://www.ajnr.org/content/early/2011/01/27/ajnr.A2329>

This information is current as of April 20, 2024.

ORIGINAL  
RESEARCHM.N. Nguyen-Huynh  
S.C. Johnston

# Is Mechanical Clot Removal or Disruption a Cost-Effective Treatment for Acute Stroke?

**BACKGROUND AND PURPOSE:** It is unclear whether the costs and risks of mechanical therapies make them cost-effective. We examined whether interventions such as mechanical clot removal or disruption with angioplasty are cost-effective for acute ischemic stroke compared with best medical therapy.

**MATERIALS AND METHODS:** We performed a cost-utility analysis of patients with acute stroke due to large intracranial artery occlusion presenting beyond the 3-hour window for IV tPA. Model inputs for the mechanical arm were derived from Multi MERCI trial data and a recent meta-analysis. For best medical therapy, we used rates of spontaneous recanalization, ICH, and functional outcomes based on a systematic literature review. Discounted QALYs were determined by using the Markov modeling for 65-year-old patients with acute ischemic stroke.

**RESULTS:** On the basis of a systematic literature review, we modeled an 84% rate of recanalization with mechanical intervention and a 6.3% rate of symptomatic ICH. For best medical therapy, we modeled a spontaneous recanalization rate of 24% with a 2% rate of symptomatic ICH. Mechanical therapies were associated with a \$7718 net cost and a gain of a 0.82 QALYs for each use, thus yielding a net of \$9386/QALY gained. In sensitivity analyses, results were dependent on the rates of recanalization, symptomatic ICH rates, and costs of treatment.

**CONCLUSIONS:** On the basis of available data, mechanical therapies in qualified patients with acute stroke beyond the window for IV tPA appear to be cost-effective. However, the inputs are not derived from randomized trials, and results are sensitive to several assumptions.

**ABBREVIATIONS:** CI = confidence interval; ECASS III = European Cooperative Acute Stroke Study III; FDA = US Food and Drug Administration; ICH = intracerebral hemorrhage; IV = intravenous; MERCI = Mechanical Embolus Removal in Cerebral Ischemia; mRS = modified Rankin Scale; MS-DRG = Medicare Severity-Diagnosis-Related Groups; NIR = neurointerventional radiology; PROACT II = Prolyse in Acute Cerebral Thromboembolism II; QALY = quality-adjusted life-year; Rx = drug therapy; tPA = tissue plasminogen activator; yo. w/ = years old with

Recently, the FDA approved 2 mechanical devices for the removal, within 8 hours of onset, of clots causing ischemic strokes.<sup>1-3</sup> Prior studies have shown that IV tPA, the only FDA-approved medication for acute ischemic stroke treatment within 3 hours of onset,<sup>4</sup> is cost-effective.<sup>5</sup> However, the cost-effectiveness of aggressive endovascular treatments with mechanical clot removal devices or angioplasty for clot disruption is less certain, given the limited data on efficacy and the upfront costs and risks.<sup>6</sup>

The goal of tPA and endovascular interventions is to reopen brain arteries and restore blood flow to reduce the size of the infarct. In reality, many patients with acute stroke arrive after the 3-hour window for IV tPA.<sup>7</sup> After the recent results of ECASS III,<sup>8</sup> some centers in the United States would consider administration of IV tPA to qualified patients who present within 4 and a half hours of symptom onset. At certain medical centers, physicians

may have the option of sending patients with acute ischemic stroke to a neurointerventional suite for intra-arterial thrombolysis with tPA or urokinase, angioplasty for clot disruption, or mechanical clot removal with either the Merci retriever (Concentric Medical, Mountain View, California) or the Penumbra System (Penumbra, Alameda, California). Aggressive treatments with these measures have been based on the hypothesis that recanalization of occluded vessels leads to reperfusion of the affected areas and prevents further permanent tissue damage. This approach has been justified by a series of studies showing that recanalization is associated with improved outcomes.<sup>9-11</sup> Therapies also differ in terms of their risk of hemorrhagic conversion.<sup>11,12</sup> In fact, there are no data from randomized trials supporting the efficacy of clot retrieval or mechanical disruption, so its clinical use is based on the presumption that by producing higher rates of recanalization with limited access to hemorrhage risk, its use will improve outcomes in selected patients.

While there are some promising data showing higher rates of recanalization with aggressive interventional therapy and therefore possibly better functional outcome, it is still unclear if the upfront costs and risks would make this option a cost-effective one.<sup>6</sup> Therefore, we conducted analyses to assess the cost-effectiveness of aggressive endovascular interventional treatments with mechanical clot removal or clot disruption with angioplasty in comparison with the best medical therapy for acute ischemic stroke treatment outside the 3-hour window for IV tPA, by using recanalization and rates of hemor-

Received April 21, 2010; accepted after revision June 25.

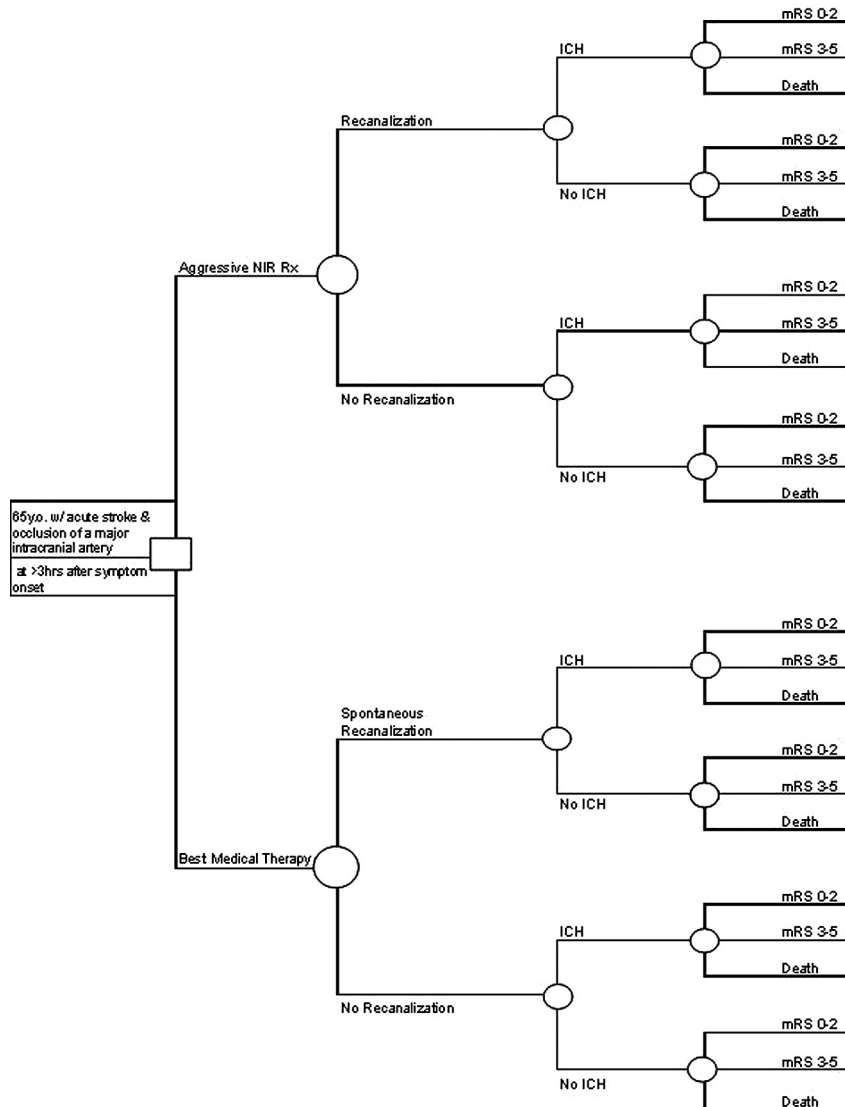
From the Departments of Neurology (M.N.N.-H., S.C.J.) and Epidemiology (S.C.J.), University of California, San Francisco, California.

Both authors contributed equally to the preparation of this manuscript. Dr Nguyen-Huynh, the corresponding author, had full access to all data in the study and had final responsibility for the decision to submit for publication.

This work was funded by an unrestricted research grant from Concentric Medical. The sponsor did not have any role in the study design, analyses, or manuscript preparation.

Please address correspondence to Mai N. Nguyen-Huynh, MD, MAS, Department of Neurology, University of California, San Francisco, Box 0114, 505 Parnassus Ave, San Francisco, CA 94143-0114; e-mail: mai.nguyen-huynh@ucsfmedctr.org

DOI 10.3174/ajnr.A2329



**Fig 1.** Decision tree used to compare cost-effectiveness of aggressive NIR treatment with the best medical therapy for a patient presenting with acute ischemic stroke within 8 hours of symptom onset but beyond the 3-hour window for IV tPA.

rhagic conversion as intermediates to derive expected outcomes.

## Materials and Methods

### Model Overview

We estimated lifetime costs and health consequences for NIR treatment compared with best medical therapy for patients with acute ischemic stroke who present after the 3-hour window for IV tPA, but within 8 hours of symptom onset (Fig 1). We followed established procedures for cost-utility analysis,<sup>13</sup> including discounting future unrelated costs and health benefits by 3% annually to acknowledge the lower value of future events to society. We took a societal perspective, from which all resources consumed and all health benefits and harm, measured in QALYs, are pertinent. A Markov model was used to track until death the health conditions and costs for hypothetical cohorts subjected to NIR and medical therapies.

Our base case considered a hypothetical cohort of 65-year-old patients, men and women, presenting with acute ischemic stroke and

an occlusion of a major intracranial artery beyond the 3-hour window for IV tPA. Modeled patients were candidates for either treatment option, including the following: 1) aggressive NIR methods such as angioplasty, clot disruption, or mechanical clot removal; or 2) best medical therapy defined as antiplatelets and supportive care. Studies reporting data on aggressive NIR methods typically included some use of intra-arterial thrombolysis.<sup>9</sup> The FDA approved the use of the Merci retriever for removal of clots from intracranial arteries on the basis of the results of the MERCI single-arm trial.<sup>1</sup> In both groups in the model, the recanalization rate served as an intermediate to derive outcomes. The model assumed that the early management of these patients (aside from the acute treatment choice) followed by their admission to a stroke unit, the stroke work-up (including neuroimaging studies), laboratory tests, and cardiac evaluation, for the 2 treatment groups would be exactly the same and in accordance with the latest clinical guidelines.<sup>14</sup> We assumed that symptomatic ICH was the only significant complication that would distinguish the treatment groups. We modeled 3 possible health outcomes: normal/mild disability (mRS score, 0–2), moderate-severe disability (mRS score, 3–5), or death.

### Model inputs analysis for base case and range of univariate sensitivity

Model Input	Aggressive NIR Rx (range)	Best Medical Therapy (range)	Reference
Recanalization rate	84% (63%–100%)	24% (14%–50%)	Rha and Saver, 2007 <sup>9</sup>
Symptomatic ICH			
With recanalization	6.2% (4%–14%)	2.0%	Smith et al, 2008 <sup>12</sup> ; Furlan et al, 1999 <sup>15</sup>
Without recanalization	17.3%	5.5%	Smith et al, 2008 <sup>12</sup> ; Furlan et al, 1999 <sup>15</sup>
Relative utility			
Permanent mild disability (mRS 0–2)	0.85	0.85	Earnshaw et al, 2006 <sup>19</sup>
Permanent moderate-severe disability (mRS 3–5)	0.27	0.27	Earnshaw et al, 2006 <sup>19</sup>
Death	0	0	
Costs			
With ICH complication	\$28,087	\$10,245	Medicare MS-DRG 023 and 064 <sup>16</sup>
Without ICH complication	\$19,210	\$4,686	Medicare MS-DRG 024 and 066 <sup>16</sup>
Mild disability (annual)	\$2200	\$2200	Gage et al, 1995 <sup>29</sup>
Moderate-severe disability (annual)	\$20,000	\$20,000	Gage et al, 1995 <sup>29</sup>
Discount rate	3.00%	3.00%	Gold et al, 1996 <sup>13</sup>

### Model Inputs

Model inputs were derived from the literature and data from the Multi MERCI single-arm trial (Table): Multi MERCI was an international multicenter prospective single-arm trial of thrombectomy in patients with large-vessel stroke treated within 8 hours of symptom onset.<sup>12</sup> Based on the availability of data, we chose model inputs on the basis of the following hierarchy of evidence: 1) randomized trials, 2) most recent meta-analysis, 3) prospective cohort studies or non-randomized trials, and 4) estimates from experts in the fields. Recanalization rates for both groups were derived from the most recent meta-analysis.<sup>9</sup> For the aggressive NIR treatment arm, symptomatic ICH rates and mRS scores were calculated for subjects enrolled in the Multi MERCI single-arm trial,<sup>12</sup> excluding those who received IV tPA. The mRS scores were obtained at 3 months posttreatment in the Multi MERCI single-arm trial. We defined good outcome as an mRS of 0–2.

In the best medical therapy arm, data for symptomatic ICH rates and mRS scores were not readily available in the published literature. We made an assumption that the ratio of ICH rates for those who were spontaneously recanalized and those who were not would be the same as the ICH ratio seen in the aggressive NIR treatment arm. We obtained the symptomatic ICH rate for the spontaneous recanalization subgroup from the control arm in PROACT II.<sup>15</sup> For the nonrecanalization subgroup, the symptomatic ICH rate was calculated by using the ratio mentioned above. In the best medical therapy arm, we used health outcomes published in the most recent meta-analysis.<sup>9</sup> Good outcome was defined in the meta-analysis as functional independence, demonstrated by an mRS score of 0–2, and this score was stratified by recanalization versus no recanalization. Whenever possible, the meta-analysis used outcome status 3 months poststroke. If it was not available, then the final assessment closest to 3 months was used, ranging from status at discharge to status at 6 months poststroke. The meta-analysis did not differentiate between mRS scores for ICH and no ICH.

Cost data were obtained from the Centers for Medicare & Medicaid Services.<sup>16</sup> Fiscal year 2009 Medicare national average payment rates for mechanical embolectomy with (MS-DRG 23) and without (MS-DRG 24) major complication were used to calculate costs for the neurointerventional treatment arm. For the best medical therapy arm, calculations were made by using the 2009 Medicare national average payment rates for intracranial hemorrhage or cerebral infarct with (MS-DRG 64) and without (MS-DRG 66) major complication.

All-cause mortality rates were taken from US mortality data from 2005, specific for age and sex.<sup>17</sup> QALYs are the product of years in a health state by the utility of that state. Utilities are defined, as is standard, to range from 0 to 1.0, where death equals 0 and perfect health equals 1. All-stroke utility weights by mRS group status have been used in prior cost-effectiveness analysis in patients with ICH<sup>18,19</sup> for permanent mild (0.85) and moderate-severe (0.27) disabilities from a prior cost-effectiveness analysis of treatment for ICH.<sup>19</sup>

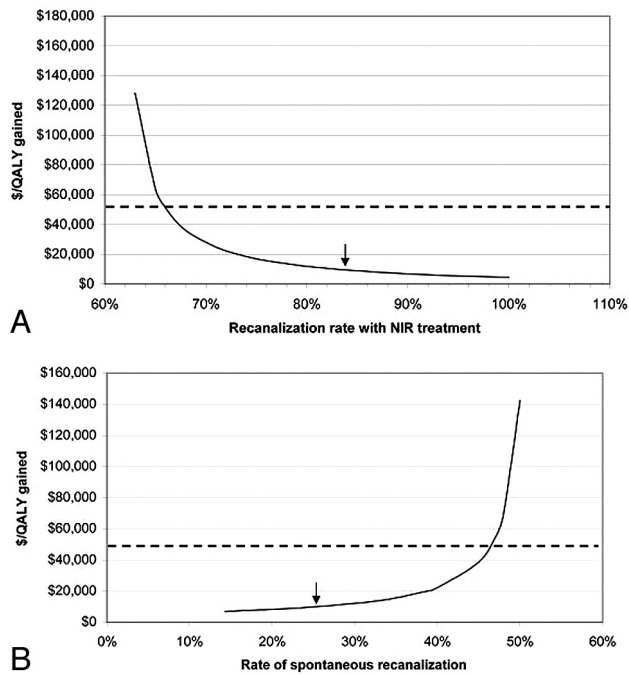
### Sensitivity Analysis

Univariate sensitivity analyses were performed to test the robustness of the model assumptions, by varying individual variables throughout broad ranges while holding all other values constant. Ranges were selected to include prior published values in clinical studies and meta-analyses. We also performed a multivariable sensitivity analysis by using a Monte Carlo simulation with all input variables (except for age and discount rate) and 10,000 trials (TreeAge Pro 2009, release 1.0.2; TreeAge Software, Williamstown, Massachusetts). Ninety-five percent CIs were obtained nonparametrically from the output distribution. We considered outcomes <\$50,000/QALY to be cost-effective for adopting and using a medical technology such as angioplasty or mechanical clot removal.<sup>20</sup>

### Results

For the base case, we applied the overall recanalization rates reported in the most recent meta-analysis: 84% for the aggressive NIR treatment arm and 24% for best medical therapy.<sup>9</sup> Using raw data from the Multi MERCI trial, we modeled a 6.2% rate of symptomatic ICH for those who were recanalized in the aggressive NIR arm. For recanalization under best medical therapy, a 2% rate of symptomatic ICH was taken from the control arm of PROACT II.<sup>15</sup> The symptomatic ICH rate for nonrecanalization in the aggressive NIR treatment arm was 17.3%, from the Multi MERCI data. Using calculations as described in the “Materials and Methods” section above, we modeled an ICH rate of 5.5% for the nonrecanalization subgroup under the best medical therapy. On the basis of these model inputs, aggressive NIR treatment was associated with a net cost of \$7718 and a gain of 0.82 QALYs, yielding a net of \$9386/QALY gained.

Univariate sensitivity analyses evaluated the robustness of the model assumptions. In the sensitivity analysis, we assessed

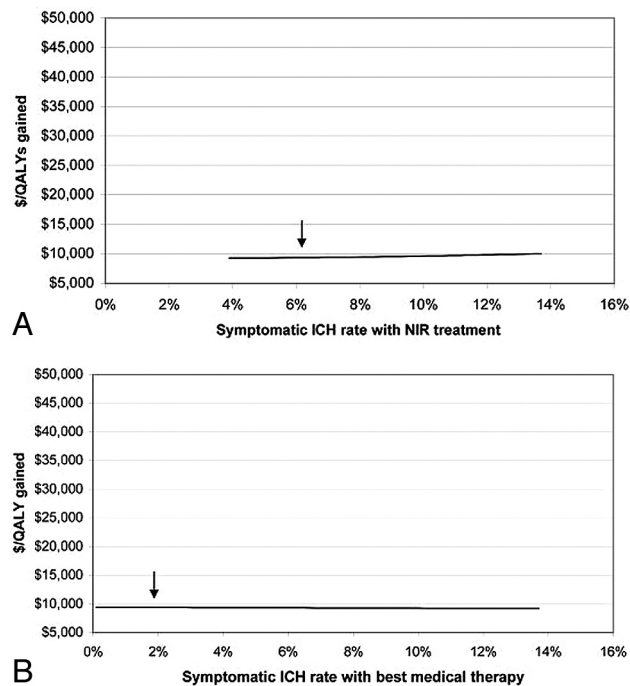


**Fig 2.** Univariate sensitivity analyses of recanalization rates over an appropriate range of uncertainty for those undergoing NIR treatment (A) and best medical therapy (B). Arrows indicate base-case values for NIR treatment (84%) and best medical therapy (24%). Rates that lead to a net of  $< \$50,000/\text{QALY}$  gained are usually considered cost-effective (*bold dashed line*).

net U.S. dollars/QALY gained over a range of recanalization rates with NIR treatment (63%–100%) and with best medical therapy (14%–50%) (Fig 2). Aggressive NIR treatment was cost-effective if recanalization could be achieved at a rate  $\geq 67\%$ . With a base case value of 84% for the recanalization rate with NIR treatment, the intervention remained cost-effective as long as spontaneous recanalization rates were  $< 47\%$ . Symptomatic ICH rates for aggressive NIR treatment ranging from 4% to 14% had little effect on the cost-effectiveness of the model (Fig 3). Aggressive NIR treatment remained cost-effective even when Medicare reimbursement for the procedure and hospitalization were increased by 2.5 times the base-case value.

## Discussion

Although no randomized trial of mechanical clot disruption or removal for ischemic stroke has been performed, the procedure has been widely adopted, primarily on the basis of cohort studies that have shown that rates of recanalization are higher than those seen with medical therapy and that recanalization is associated with improved clinical outcomes.<sup>9</sup> Nonetheless, such aggressive NIR interventions are expensive and potentially risky, with higher rates of ICH. In our model, treating patients with acute ischemic stroke presenting beyond the 3-hour window for IV tPA with aggressive NIR treatments such as mechanical clot disruption or removal with or without intra-arterial thrombolysis was cost-effective compared with best medical therapy alone. Although we used the best available data, substantial uncertainty exists in key areas, including the impact of recanalization on clinical outcome and expected rates of recanalization in actual practice. Determination of cost-effectiveness will ultimately depend on results of ade-

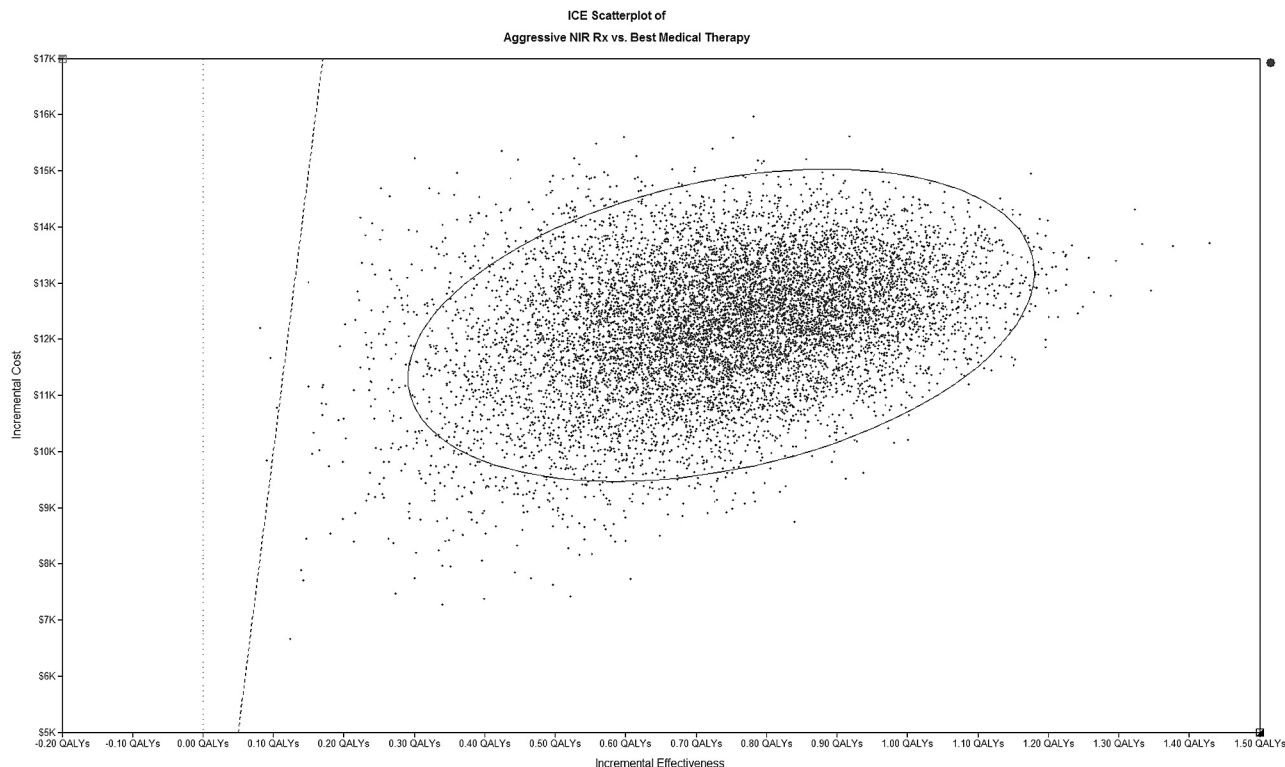


**Fig 3.** Univariate sensitivity analyses of symptomatic ICH rates with NIR treatment (A) and best medical therapy (B). Arrows indicate base-case values (6.3% for NIR and 2% for best medical therapy). Rates that lead to a net of  $< \$50,000/\text{QALY}$  gained are usually considered cost-effective.

quately powered randomized trials comparing NIR interventions with best medical therapy.

Results from a recently published cost-effectiveness analysis of mechanical thrombectomy were in favor of aggressive treatment compared with standard therapy, with a cost-effectiveness ratio of  $\$12,120/\text{QALY}$  gained.<sup>6</sup> In that study, model inputs for recanalization and symptomatic ICH rates were taken from 2 studies: the MERCI single-arm trial<sup>1</sup> for the mechanical thrombectomy arm and from the placebo group of the PROACT II study<sup>15</sup> for the standard therapy arm. Compared with the Multi MERCI single-arm trial, the MERCI single-arm trial used an older generation of clot removal device and included fewer subjects. Multi MERCI also included patients who also received IV tPA, though we excluded these in our calculations for this study. In our study, we allowed the aggressive NIR treatment arm to include mechanical thrombectomy as well as angioplasty with or without intra-arterial thrombolysis to capture current practice more completely. Despite study differences, the final results are similar. With the assumptions outlined in the studies, the use of mechanical thrombectomy alone or in combination with angioplasty with or without intra-arterial thrombolytics appears to be cost-effective compared with medical therapy.

The benefit seen in our study was driven largely by the fact that aggressive NIR treatment yielded a much higher rate of recanalization than the best medical therapy alone and subsequently better functional outcomes. In our model, in which spontaneous recanalization would occur 24% of the time, if recanalization with NIR treatment could be achieved at a rate  $\geq 67\%$ , then it would be a cost-effective measure. In Multi MERCI, the final recanalization rate was 69.5% for the use of the newer L5 Retriever (Concentric Medical) along with intra-



**Fig 4.** Monte Carlo simulation of all input variables (except age and discount rate). The oval represents the 95% CI of the distribution of cost-effectiveness of the intervention, all of which is <\$50,000/QALY as represented by the diagonal dashed line.

arterial tPA,<sup>12</sup> which would render this treatment option a cost-effective one based on the study model. With our study assumptions, the spontaneous recanalization rate would have to be >47% to render aggressive NIR treatment non-cost-effective. In the systematic review, a 50% rate was reported from 1 subgroup analysis of 14 patients who received placebos in the Australian Streptokinase Trial.<sup>21</sup> With recanalization comes the concern for a higher rate of hemorrhagic conversion. The impact of ICH on dollars/QALY would be a significantly worse QALY and not much of an increase in direct costs because patients with ICH tend to have a high rate of mortality. However, pooled data from a recent meta-analysis on recanalization did not find an increased rate of symptomatic ICH with recanalization.<sup>9</sup> Furthermore, sensitivity analysis of our model doubling the base-case rate of symptomatic ICH with NIR treatment, derived from Multi MERCI, did not change this study final result.

The net cost per QALY gained for the base case (\$9386) was well below the accepted threshold of \$50,000/QALY. For the base case, we used the 2009 national average Medicare reimbursement for urban hospitals for the principal diagnosis of ischemic stroke and use of the Merci retriever with major complication (MS-DRG 023) or without (MS-DRG 024). In reality, costs for the procedure likely vary by institution. In the sensitivity analysis, more than doubling the base-case costs for aggressive NIR treatment still yielded a favorable result for being aggressive. On the basis of our estimates, the cost-effectiveness of aggressive NIR intervention for stroke is comparable with that for the administration of IV tPA for acute ischemic stroke presenting within 3 hours of symptom onset (\$8000/QALY),<sup>5</sup> carotid endarterectomy in symptomatic pa-

tients (\$4100/QALY),<sup>22</sup> and the coiling therapy of first-time ruptured aneurysms of <10 mm (\$12,000/QALY) and ruptured aneurysms of >10 mm (\$5000/QALY).<sup>23</sup> Finally, a Monte Carlo simulation of all input variables (except age and discount rate) did not change the conclusions of this model.

Our study has a number of limitations. The integrity of the model depends on the assumptions made and the availability of reliable data. Although recently good evidence emerges to support the expansion of an acute stroke treatment window with IV tPA from 3 hours to 4.5 hours, good reliable data on the rates of recanalization and ICH for the period between 3 and 4.5 hours are not yet available. Therefore, this model was set up for patients who present after the 3-hour window for IV tPA. The model has sufficient built-in flexibility so that when new reliable data are available for the variables of interest, a re-analysis with new assumptions can be performed.

We took the recanalization rates for both groups in the model from the most recent meta-analysis. This meta-analysis was designed to assess the rates of recanalization that occurred with different types of active therapy versus those occurring spontaneously, with the association of recanalization with mortality and functional outcomes, and with the development of hemorrhagic transformation. To our knowledge, there is no controlled randomized trial comparing aggressive NIR methods and best medical therapy; therefore, the meta-analysis provides some of the best available data. However, therapies represented in the meta-analysis are not necessarily the same as best medical practices today. Although “best medical therapy” in acute stroke may differ from institution to institution and from study to study despite published clinical practice guidelines, we have defined “best medical therapy” in the

model to reflect recommendations in the most recent clinical guidelines on the early management of patients with acute ischemic stroke.<sup>14</sup>

Spontaneous recanalization is poorly documented in the literature and will depend on the selection of subjects studied and the timing of evaluation, as seen in the small number of published studies.<sup>21,24-27</sup> However, the recanalization rate with medical therapy would have to be quite high to change the study results, and the highest rate of recanalization with medical therapy previously reported was 50%.<sup>21</sup> On the other hand, a lower recanalization rate with NIR treatment, below 67%, could render the intervention non-cost-effective. Cost-effectiveness analyses will need to be performed with newer generations of mechanical devices. Symptomatic ICH was not always reported in the literature and often was not specific for recanalization status.<sup>15,26-28</sup> The Multi MERCI single-arm trial collected data on recanalization and ICH rates; however, the number of subjects in each group was small. The number of disabled survivors may be underestimated. Nonetheless, aggressive NIR treatment remained cost-effective even with ICH rates more than double those seen in Multi MERCI. Finally, without randomized trial data available, any conclusions on cost-effectiveness must be interpreted with caution.

## Conclusions

The availability of NIR treatments such as mechanical clot disruption or removal has opened up a new era for acute stroke treatment, especially for patients with large-artery occlusion who miss the window or are ineligible for IV tPA. Invasive NIR methods can have significant potential risks and costs. However, on the basis of current limited data, an aggressive approach with mechanical clot disruption or removal may be highly cost-effective. Still, results from this model should not be interpreted as providing additional evidence of the efficacy of NIR treatment, which requires performance of a randomized trial. A combination of clinical and cost considerations should ultimately guide selection of acute stroke therapies.

## References

1. Smith WS, Sung G, Starkman S, et al. Safety and efficacy of mechanical embolectomy in acute ischemic stroke: results of the MERCI trial. *Stroke* 2005;36:1432-38. Epub 2005 Jun 16
2. Smith WS. Safety of mechanical thrombectomy and intravenous tissue plasminogen activator in acute ischemic stroke: results of the Multi Mechanical Embolus Removal in Cerebral Ischemia (MERCI) trial, part I. *AJNR Am J Neuroradiol* 2006;27:1177-82
3. Bose A, Henkes H, Alfke K, et al. The Penumbra system: a mechanical device for the treatment of acute stroke due to thromboembolism. *AJNR Am J Neuroradiol* 2008;29:1409-13
4. Tissue plasminogen activator for acute ischemic stroke: The National Institute of Neurological Disorders and Stroke rt-PA Stroke Study Group. *N Engl J Med* 1995;333:1581-87
5. Fagan SC, Morgenstern LB, Pettit A, et al. Cost-effectiveness of tissue plasminogen activator for acute ischemic stroke: NINDS rt-PA Stroke Study Group. *Neurology* 1998;50:883-90
6. Patil CG, Long EF, Lansberg MG. Cost-effectiveness analysis of mechanical thrombectomy in acute ischemic stroke. *J Neurosurg* 2009;110:508-13
7. Hills NK, Johnston SC. Why are eligible thrombolysis candidates left untreated? *Am J Prev Med* 2006;31:S210-16
8. Hacke W, Kaste M, Bluhmki E, et al. Thrombolysis with alteplase 3 to 4.5 hours after acute ischemic stroke. *N Engl J Med* 2008;359:1317-29
9. Rha JH, Saver JL. The impact of recanalization on ischemic stroke outcome: a meta-analysis. *Stroke* 2007;38:967-73
10. Flint AC, Duckwiler GR, Budzik RF, et al. Mechanical thrombectomy of intracranial internal carotid occlusion: pooled results of the MERCI and Multi MERCI Part I trials. *Stroke* 2007;38:1274-80. Epub 2007 Mar 1
11. Barnwell SL, Clark WM, Nguyen TT, et al. Safety and efficacy of delayed intra-arterial urokinase therapy with mechanical clot disruption for thromboembolic stroke. *AJNR Am J Neuroradiol* 1994;15:1817-22
12. Smith WS, Sung G, Saver J, et al. Mechanical thrombectomy for acute ischemic stroke: final results of the Multi MERCI trial. *Stroke* 2008;39:1205-12
13. Gold MR, Siegel JE, Russell LB, et al. *Cost-effectiveness in Health and Medicine*. New York: Oxford University Press; 1996
14. Adams HP Jr, del Zoppo G, Alberts MJ, et al. Guidelines for the early management of adults with ischemic stroke: a guideline from the American Heart Association/American Stroke Association Stroke Council, Clinical Cardiology Council, Cardiovascular Radiology and Intervention Council, and the Atherosclerotic Peripheral Vascular Disease and Quality of Care Outcomes in Research Interdisciplinary Working Groups—the American Academy of Neurology affirms the value of this guideline as an educational tool for neurologists. *Stroke* 2007;38:1655-711. Epub 2007 Apr 12
15. Furlan A, Higashida R, Wechsler L, et al. Intra-arterial prourokinase for acute ischemic stroke: The PROACT II study—a randomized controlled trial. *Prolyse in Acute Cerebral Thromboembolism*. *JAMA* 1999;282:2003-11
16. Department of Health and Human Services. Centers for Medicare & Medicaid Services. Changes to the hospital inpatient prospective payment systems and fiscal year 2009 rates. *Federal Register* 73:48433-9084. [http://www.access.gpo.gov/su\\_docs/fedreg/a080819c.html](http://www.access.gpo.gov/su_docs/fedreg/a080819c.html). Published August 19, 2008. Accessed October 12, 2009
17. Kent D, Kuntz KM, Patel MR, et al. Perioperative imaging strategies for carotid endarterectomy: an analysis of morbidity and cost-effectiveness in symptomatic patients. *JAMA* 1995;274:888-94
18. Eckman MH, Rosand J, Knudsen KA, et al. Can patients be anticoagulated after intracerebral hemorrhage? A decision analysis. *Stroke* 2003;34:1710-16
19. Earnshaw SR, Joshi AV, Wilson MR, et al. Cost-effectiveness of recombinant activated factor VII in the treatment of intracerebral hemorrhage. *Stroke* 2006;37:2751-58. Epub 2006 Sep 28
20. Laupacis A, Feeny D, Detsky AS, et al. How attractive does a new technology have to be to warrant adoption and utilization? Tentative guidelines for using clinical and economic evaluations. *CMAJ* 1992;146:473-81
21. Yasaka M, O'Keefe GJ, Chambers BR, et al. Streptokinase in acute stroke: effect on reperfusion and recanalization—Australian Streptokinase Trial study group. *Neurology* 1998;50:626-32
22. Kuntz KM, Kent KC. Is carotid endarterectomy cost-effective? An analysis of symptomatic and asymptomatic patients. *Circulation* 1996;94:II194-198
23. Johnston SC, Gress DR, Kahn JG. Which unruptured cerebral aneurysms should be treated? A cost-utility analysis. *Neurology* 1999;52:1806-15
24. Mori E, Yoneda Y, Tabuchi M, et al. Intravenous recombinant tissue plasminogen activator in acute carotid artery territory stroke. *Neurology* 1992;42:976-82
25. del Zoppo GJ, Higashida RT, Furlan AJ, et al. PROACT: a phase II randomized trial of recombinant pro-urokinase by direct arterial delivery in acute middle cerebral artery stroke—PROACT Investigators. *Prolyse in Acute Cerebral Thromboembolism*. *Stroke* 1998;29:4-11
26. Molina CA, Montaner J, Abilleira S, et al. Time course of tissue plasminogen activator-induced recanalization in acute cardioembolic stroke: a case-control study. *Stroke* 2001;32:2821-27
27. Cintas P, Le Traon AP, Larrue V. High rate of recanalization of middle cerebral artery occlusion during 2-MHz transcranial color-coded Doppler continuous monitoring without thrombolytic drug. *Stroke* 2002;33:626-28
28. Rother J, Schellinger PD, Gass A, et al. Effect of intravenous thrombolysis on MRI parameters and functional outcome in acute stroke <6 hours. *Stroke* 2002;33:2438-45
29. Gage BF, Cardinalli AB, Albers GW, et al. Cost-effectiveness of warfarin and aspirin for prophylaxis of stroke in patients with nonvalvular atrial fibrillation. *JAMA* 1995;274:1839-45