

**Are your MRI contrast agents cost-effective?**

Learn more about generic Gadolinium-Based Contrast Agents.



**FRESENIUS  
KABI**

caring for life

**AJNR**

## **Resting-State fMRI: A Review of Methods and Clinical Applications**

M.H. Lee, C.D. Smyser and J.S. Shimony

*AJNR Am J Neuroradiol* published online 30 August 2012

<http://www.ajnr.org/content/early/2012/08/30/ajnr.A3263>

This information is current as  
of April 8, 2024.

## REVIEW ARTICLE

M.H. Lee  
C.D. Smyser  
J.S. Shimony



# Resting-State fMRI: A Review of Methods and Clinical Applications

**SUMMARY:** Resting-state fMRI measures spontaneous low-frequency fluctuations in the BOLD signal to investigate the functional architecture of the brain. Application of this technique has allowed the identification of various RSNs, or spatially distinct areas of the brain that demonstrate synchronous BOLD fluctuations at rest. Various methods exist for analyzing resting-state data, including seed-based approaches, independent component analysis, graph methods, clustering algorithms, neural networks, and pattern classifiers. Clinical applications of resting-state fMRI are at an early stage of development. However, its use in presurgical planning for patients with brain tumor and epilepsy demonstrates early promise, and the technique may have a future role in providing diagnostic and prognostic information for neurologic and psychiatric diseases.

**ABBREVIATIONS:** BOLD = blood oxygen level–dependent; DMN = default mode network; ICA = independent component analysis; RS-fMRI = resting-state fMRI; RSN = resting-state network

fMRI using task-based or stimulus-driven paradigms has been critical to our current understanding of brain function. Using the relative changes from baseline in the BOLD signal during the performance of a task or in response to a stimulus, one infers that certain areas of the brain are activated. In recent years, there has been an increase in interest in the application of the technique at rest, termed resting-state fMRI or functional connectivity MR imaging. RS-fMRI investigates synchronous activations between regions that are spatially distinct, occurring in the absence of a task or stimulus, to identify RSNs. In this review, we provide a discussion of RS-fMRI studies and analysis techniques and present potential clinical applications from the literature.

## Background on RS-fMRI

RS-fMRI focuses on spontaneous low frequency fluctuations ( $<0.1$  Hz) in the BOLD signal. The functional significance of these fluctuations was first presented by Biswal et al in 1995.<sup>1</sup> In this study, subjects were told not to perform any cognitive, language, or motor tasks. The authors identified a seed region in the left somatosensory cortex on the basis of traditional block design fMRI, during which the same subjects performed bilateral finger tapping. After determining the correlation between the BOLD time course of the seed region and that of all other areas in the brain, the authors found that the left somatosensory cortex was highly correlated with homologous areas in the contralateral hemisphere. The existence of synchronous spontaneous fluctuations between primary and higher order somatosensory areas was further confirmed by later studies.<sup>2–6</sup>

Perhaps the most fundamental RSN is the DMN (Fig 1A), first identified from PET data by Raichle et al<sup>7</sup> (for further discussion, see Gusnard et al<sup>8</sup>). In this study, the authors analyzed data from healthy volunteers resting quietly with their eyes closed. They found that consistent regions of the brain were active at rest but decreased their activity when cognitive tasks were performed. The default mode network was identified by Greicius et al<sup>9</sup> by using fMRI and was confirmed in many studies by using a variety of analysis methods.<sup>2–6,10,11</sup> Studies have hypothesized that there are 2 large opposing systems in the brain, one including the DMN and the other composed of attentional or task-based systems, such as somatosensory, visual, or attention RSNs. Terms used to refer to these systems include “task-positive” and “task-negative”<sup>4,12,13</sup> and “intrinsic” and “extrinsic.”<sup>14,15</sup>

Several other RSNs have been identified. The somatosensory network, studied first by Biswal et al,<sup>1</sup> includes primary and higher order motor and sensory areas (Fig 1B). The visual network is highly consistent across various studies and spans much of the occipital cortex (Fig 1C).<sup>2–6</sup> An auditory network consisting of the Heschl gyrus, the superior temporal gyrus, and the posterior insula has been identified.<sup>5</sup> A language network that includes Broca and Wernicke areas but also extends to prefrontal, temporal, parietal, and subcortical regions has been described by using RS-fMRI (Fig 1D).<sup>16</sup>

RSNs involved in attentional modulation and cognitive control have also been identified. Two networks identified by using both RS-fMRI and task-based fMRI include the dorsal and ventral attention networks.<sup>4,6,17,18</sup> The dorsal attention network (Fig 1E) includes the intraparietal sulcus and the frontal eye field and is involved in the executive control of attention. The ventral attention network (Fig 1F), which includes the temporoparietal junction and ventral frontal cortex, is involved in the detection of salient cues (those that stand out from their environment).<sup>17</sup> The frontoparietal control network (Fig 1G), which includes the lateral prefrontal cortex and the inferior parietal lobule, is thought to be involved in decision-making processes.<sup>19</sup> Finally, the cingulo-opercular network, which includes the medial superior frontal cortex, anterior insula, and anterior prefrontal cortex, is thought to play a role in performing goal-directed task sets.<sup>4,20</sup>

From the Mallinckrodt Institute of Radiology (M.H.L., J.S.S.) and Departments of Neurology and Pediatrics (C.D.S.), Washington University School of Medicine, St. Louis, Missouri.

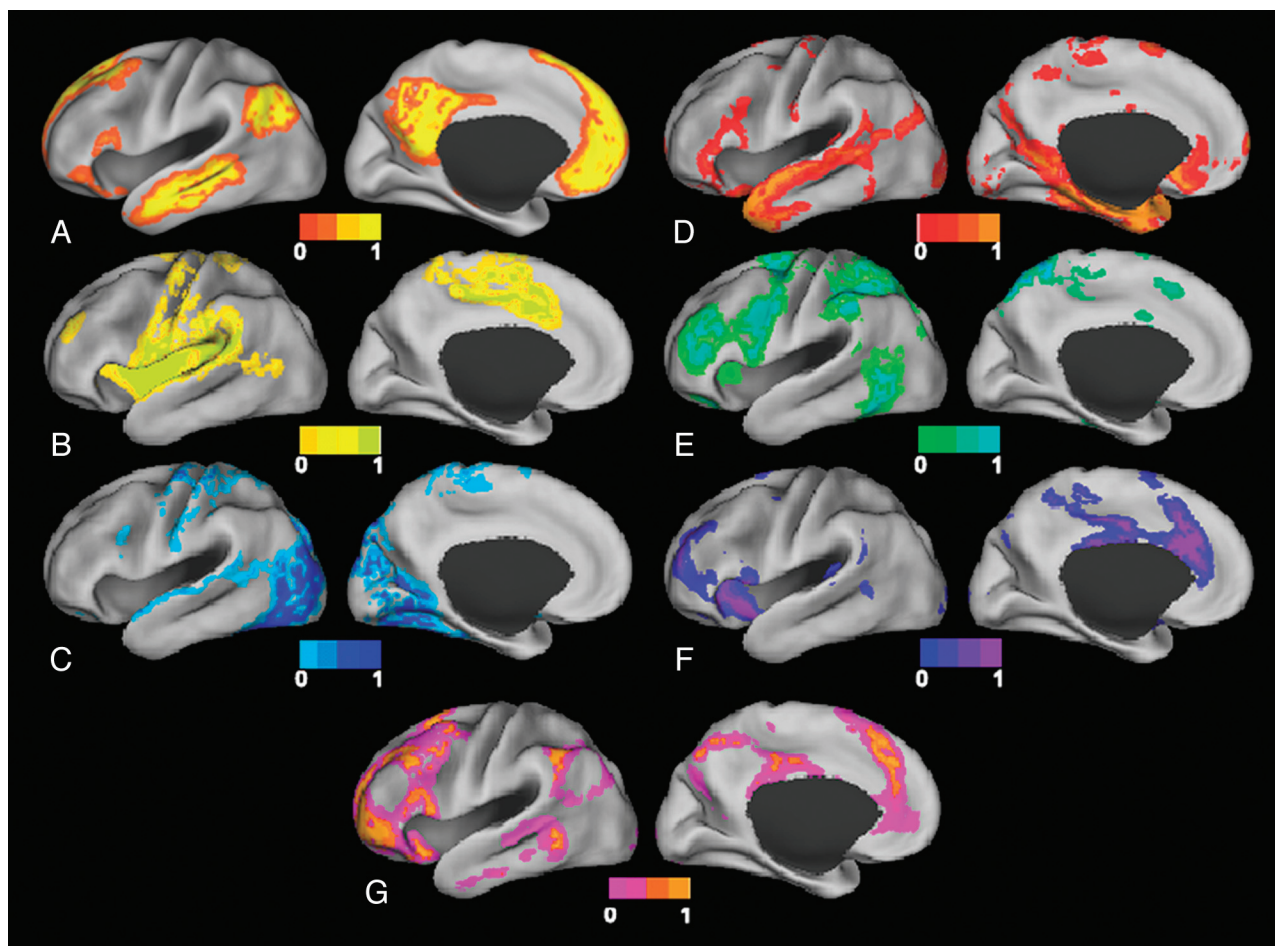
This work was supported by grant NIH R21 CA159470 (J.S.S.).

Please address correspondence to Joshua S. Shimony, MD, Mallinckrodt Institute of Radiology, Washington University School of Medicine, Campus Box 8131, 510 S Kingshighway Blvd, St. Louis, Missouri 63110; e-mail: shimonyj@wustl.edu



Indicates open access to non-subscribers at [www.ajnr.org](http://www.ajnr.org)

<http://dx.doi.org/10.3174/ajnr.A3263>



**Fig 1.** Surface plots of RSNs. *A*, Default mode network. *B*, Somatomotor network. *C*, Visual network. *D*, Language network. *E*, Dorsal attention network. *F*, ventral attention network. *G*, Frontoparietal control network.

### Analysis Methods

BOLD signal preprocessing generally includes correction for section-dependent time shifts and intensity differences. This is followed by regression of head motion and other nuisance regressors. Nuisance regressors include the signal time courses for regions of interest located in the ventricles and white matter, which are thought to include high proportions of noise related to cardiac and respiratory signals.<sup>21–24</sup> Spatial smoothing and low-pass filtering to retain frequencies  $<0.1$  Hz help to remove signal from non-neuronal causes and improve the signal-to-noise ratio.<sup>24,25</sup> Images are then registered to atlas space to achieve spatial concordance with coordinate systems and between subjects.

Controversial topics in data preprocessing include whole-brain regression and head-motion correction. Whole-brain regression, which regresses out the average time course of the entire brain, has been proposed as a method of improving the specificity of correlations and reducing noise.<sup>26</sup> The whole-brain signal has also been found to correlate with the effects of carbon dioxide partial pressure variation.<sup>27</sup> However, some believe that by shifting the distribution of correlations, whole-brain regression produces spurious negative correlations that have no physiologic significance.<sup>28,29</sup> Head-motion correction has also recently become a matter of debate because it has been shown that inadequate correction for head motion can result in spurious correlations in RS-fMRI analysis.<sup>30–32</sup> Although

head motion is less concerning in healthy young adults, it poses significant challenges for the analysis of data acquired from children, older adults, and patients.

After these preprocessing steps, a number of methods can be used to analyze the data, each with its own inherent advantages and disadvantages. In this section, we provide a brief overview of some of the statistical and mathematic approaches previously applied to RS-fMRI data.

The first method used was seed-based analysis, which has been applied in numerous studies.<sup>1,7,17,19</sup> This method entails selecting ROIs and correlating the average BOLD time course of voxels within these ROIs with each other and with the time courses of all other voxels in the brain. Typically, a threshold is determined to identify voxels significantly correlated with the region of interest. However, this approach requires a priori selection of ROIs.

Another popular approach is ICA,<sup>2,10</sup> a mathematic technique that maximizes statistical independence among its components. For RS-fMRI data, ICA can be used to spatially identify distinct RSNs. Compared with seed-based methods, ICA has the advantage of requiring few a priori assumptions but does compel the user to manually select the important components and distinguish noise from physiologic signals. Some studies have aimed to automate this process and use ICA as a method for identifying noise within the BOLD signal.<sup>33–36</sup> Despite the differences in the 2 approaches, Rosazza et al<sup>37</sup>

showed that the results of seed-based analysis and ICA are significantly similar in a group of healthy subjects.

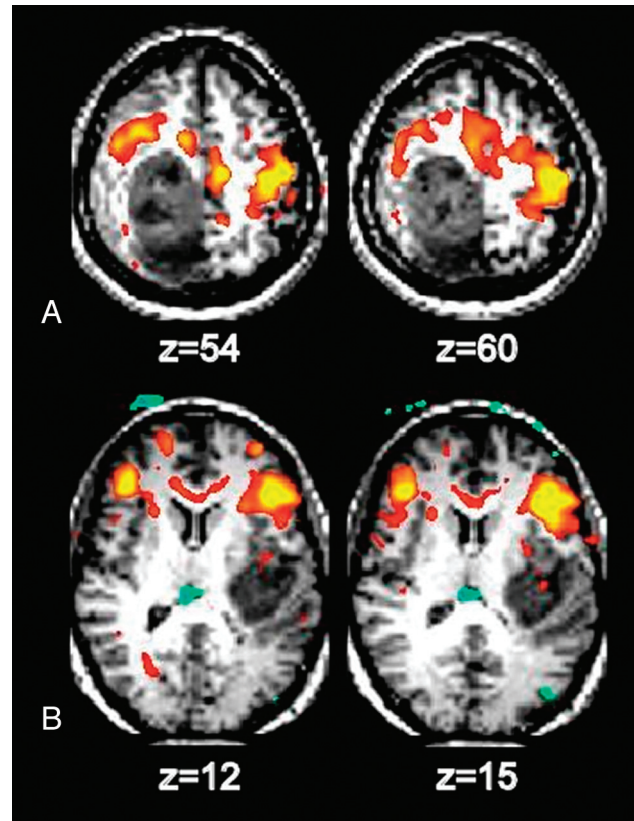
Graph methods provide a distinct alternative to seed-based analyses and ICA.<sup>4,38-44</sup> This approach views RSNs as a collection of nodes connected by edges. With RS-fMRI data, ROIs can be represented as nodes, and correlation between the ROIs, as the connectivity of the edges. Connectional characteristics of the graph can then be computed.<sup>44</sup> Examples of measures of interest include the average path length, a measure of global connectedness, which is the average length of the shortest connection between all pairs of nodes.<sup>44</sup> Another measure of interest is the clustering coefficient, which is related to the connectedness of neighboring nodes and reflects the presence of smaller subgraphs.<sup>44</sup> Using these techniques, several studies have demonstrated that the brain exhibits a small world topology. Small world topology, which was first described in social networks, allows each node to have a relatively low number of connections while still being connected to all other nodes with a short distance. This is achieved through the existence of hubs, which are critical nodes with large numbers of connections, that allow high levels of local connectivity.<sup>39,45</sup> Small world networks have high clustering coefficients implying high levels of local connections (ie, cliques or groups) and an overall short distance between any 2 nodes, or a small average path length.<sup>40-42</sup>

Another method used to analyze RS-fMRI data is clustering algorithms. Clustering algorithms attempt to group items that are alike on the basis of a set of relevant characteristics to the problem of interest. When analyzing RS-fMRI data, one may want to group a collection of voxels or ROIs on the basis of similarities in their BOLD time courses by using some distance metric, such as a Pearson correlation. One example of a clustering algorithm is hierarchical clustering,<sup>42,46</sup> which builds a dendrogram (a treelike structure) of all members. Other examples of clustering algorithms are the K-means<sup>15</sup> and *c*-means<sup>47</sup> clustering algorithms. In these algorithms, all voxels are assigned membership to 1 of several clusters on the basis of their distances from the cluster centers, which, in turn, are calculated from an average of their members. The algorithm iterates to update memberships and cluster centers until convergence is achieved.<sup>47</sup> Other variations on clustering include spectral-based clustering<sup>48</sup> and graph-based clustering.<sup>11</sup>

Multivariate pattern classification is another method that can be used for analysis of RS-fMRI data.<sup>49</sup> This approach uses patterns in the data that were previously deemed important in a training dataset to classify a new dataset. As an example, one might identify specific sets of patterns or features for each RSN and use them to identify the networks in a new dataset.<sup>50</sup> In another example, Dosenbach et al<sup>51</sup> used RS-fMRI to predict individual brain maturity. Temporal correlations were computed between the BOLD time courses of various regions throughout the brain. Some of these functional connections were more informative than others in predicting brain maturity and could be used in a classifier to predict the brain maturity of an individual.

### Reliability of RS-fMRI

Important issues to consider in regard to RS-fMRI are the test-retest reproducibility and intersubject variability. Studies



**Fig 2.** Identification of motor and language areas by using RS-fMRI in 2 patients with glioblastoma multiforme. *A*, The somatosensory area is displaced anterior to the tumor. *B*, Broca area is displaced anterior to the tumor.

suggest that RSNs can be detected reliably across imaging sessions<sup>52,53</sup> and across different subjects,<sup>10,53</sup> though there may be some loci of variability between subjects.<sup>52</sup> In particular, Chou et al<sup>54</sup> examined the reproducibility of RS-fMRI during 1 year and found an intraclass correlation of  $>0.60$  for  $>70\%$  of the functional networks examined.

### Clinical Applications

RS-fMRI has provided many interesting insights on RSNs in the healthy brain and in multiple disease states.<sup>55</sup> However, practical application of RS-fMRI in the clinical setting requires the ability to establish conclusions on the basis of analysis of data from individual patients. In this section, we focus on studies that have demonstrated potential clinical applications at the single subject level. Group-level studies were included in the pediatric applications section due to the more limited literature in this cohort.

### Presurgical Localization of Eloquent Cortex

RS-fMRI has been applied to identify specific brain RSNs for presurgical planning in patients with brain tumor (Fig 2). Compared with existing task-based methods, RS-fMRI is less demanding and can be performed on patients who may not otherwise be able to cooperate with task-based paradigms, such as young children, patients with altered mental status, sedated patients, and those who are parietic or aphasic,<sup>56-58</sup> especially because BOLD activity seen in RS-fMRI has also been seen during sleep<sup>59</sup> and anesthesia.<sup>60,61</sup> Another advantage of RS-fMRI over task-based fMRI is the ability to identify



many networks simultaneously, thus saving scanning time if information from multiple networks is required.

Several studies have reported the application of RS-fMRI for preoperative planning. Zhang et al<sup>62</sup> reported the successful localization of motor areas in 4 patients with tumors distorting sensorimotor regions. Using a seed-based approach, they used an ROI placed in the contralateral undistorted sensorimotor cortex to identify the sensorimotor area in the distorted ipsilateral hemisphere. A study by Kokkonen et al<sup>57</sup> illustrated the convergence between ICA analysis of RS-fMRI and task-based fMRI in identifying sensorimotor areas in 8 patients with tumor and 10 controls. An additional study by Kokkonen et al,<sup>63</sup> comparing RS-fMRI pre- and postresection in patients with glioma, suggested that edema affects the BOLD response on the side ipsilateral to the tumor and that auditory and motor cortices are easier to detect postoperatively by using the BOLD signal.

A more challenging problem is the identification of language areas, which are known to be more variable in location<sup>64</sup> and which can also be distorted by tumor. In particular, this presents a challenge to the seed-based approach but may be more tractable with other analysis methods.

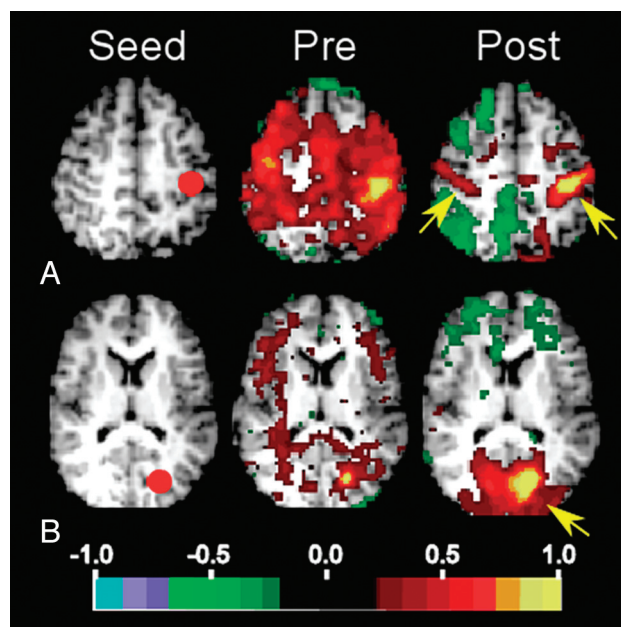
### Surgical Planning in Patients with Epilepsy

RS-fMRI may also be used for presurgical planning in patients with epilepsy. The higher spatial resolution afforded by RS-fMRI over electroencephalography could provide a distinct advantage in mapping epileptic foci or networks. Seed-based methods were used by Liu et al<sup>56</sup> to successfully locate sensorimotor areas by using RS-fMRI in patients with tumors or epileptic foci close to sensorimotor areas. They found agreement between RS-fMRI, task-based fMRI, and intraoperative cortical stimulation data. In another study from the same laboratory, Stuffelbeam et al<sup>65</sup> were able to localize areas of increased connectivity in 5 of 6 patients that overlapped with epileptogenic areas identified by invasive encephalography. Zhang et al<sup>66</sup> used graph methods and a pattern classifier to identify regions involved in the epileptogenic network. Using RS-fMRI data from 16 patients with intractable medial temporal lobe epilepsy, they achieved an average sensitivity of 77.2% and a specificity of 83.86%. Bettus et al<sup>67</sup> reported that increases in basal functional connectivity were a specific marker of the location of the epileptogenic zone in 22 patients with mesial temporal lobe epilepsy.

In the future, RS-fMRI may also be of benefit in selecting patients for epilepsy surgery and in evaluating their outcomes. In a study of a 5-year-old patient with severe epileptic encephalopathy, a normal pattern of RSNs returned following corpus callosotomy (Fig 3).<sup>68</sup> The change from abnormal to normal RSNs was accompanied by the resolution of behavioral regression that had preceded the surgery and the resumption of new skill development. The implications of this study extend beyond the benefit to the practice of epilepsy surgery by providing evidence that RSNs may be essential to the development and maintenance of the functional organization of the brain.

### Identification of Patients with Alzheimer Disease

Several studies have demonstrated the potential utility of RS-fMRI in identifying patients with Alzheimer disease. A graph analysis of fMRI data from patients with Alzheimer disease



**Fig 3.** Selected seed-based correlation maps. Columns show the seeds (left), preoperative maps (middle), and postoperative maps (right). The map quantity illustrated is the Fisher z-transformed correlation coefficient thresholded at  $\pm 0.2$ . *A*, Left somatomotor cortex seed ( $-39 -26 51$ ). Postoperatively, the somatomotor RSN is improved and involves primary somatosensory areas (arrows). *B*, Visual cortex seed ( $-20 -75 12$ ). Postoperatively, the visual RSN is improved and involves the occipital lobe (arrow).

and controls showed that clustering coefficients for the hippocampus were significantly lower in patients compared with controls, and that this measure could separate patients from controls with a sensitivity of 72% and a specificity of 78%.<sup>69</sup> Koch et al<sup>70</sup> studied 15 patients with Alzheimer disease and investigated differences in the default mode network as a marker for Alzheimer disease. They used both ICA and the correlations between 2 ROIs within the DMN. With a multivariate model including both methods, they achieved an accuracy of 97%. The authors of another study used parameters from both structural MR imaging and RS-fMRI and were also able to distinguish patients with Alzheimer disease from healthy controls with an accuracy of 89%.<sup>71</sup> Interestingly, this study also found that several default mode regions were most important in the classification.

Chen et al<sup>72</sup> studied patients with Alzheimer disease, patients with amnesic mild cognitive impairment, and controls and used seed-based methods to determine correlations between pairs of 116 regions. Using linear regression analysis and a leave-one-out cross-validation, the authors showed that RSN characteristics could identify patients with Alzheimer disease and distinguish patients with mild cognitive impairment from controls.

RS-fMRI may also be able to distinguish different types of dementia. In a study of behavioral-variant frontotemporal dementia, Alzheimer disease, and controls, reciprocal changes were seen between the frontotemporal and Alzheimer dementia groups.<sup>73</sup> The frontotemporal dementia group demonstrated decreased connectivity in the salience network but increased connectivity in the default mode network. Conversely, patients with Alzheimer disease demonstrated decreased connectivity in the default mode network but increased connec-

tivity in the salience network. A linear discriminant analysis by using these divergent characteristics was able to distinguish frontotemporal dementia from Alzheimer disease in all cases and achieved an overall 92% accuracy.

### Other Applications

Recent work has demonstrated the ability of RS-fMRI to assist in the diagnosis of disorders of consciousness, demonstrating a negative correlation between the connectivity of the DMN and the level of consciousness impairment.<sup>74</sup> Pattern classification of RS-fMRI has been applied to distinguish patients with psychiatric diseases from controls, including major depressive disorder<sup>75</sup> and schizophrenia.<sup>76,77</sup> RS-fMRI has also been used to identify patients with autism<sup>78</sup> and attention deficit/hyperactivity disorder.<sup>79</sup>

### Pediatric Applications

RS-fMRI can also be applied to study pediatric populations. Recent work has used RS-fMRI in infants to demonstrate immature forms of RSNs incorporating regions similar to those identified in older children and adults. Smyser et al<sup>80</sup> performed longitudinal analysis of network development in a cohort of very preterm infants during the neonatal period. Multiple RSNs were identified as early as 26 weeks' gestation, with characteristic patterns of neural network development reported. Interestingly, differences in RSNs were identified between term infants and those born prematurely, a finding also reported by using other neuroimaging modalities. Doria et al<sup>81</sup> reported a similar collection of RSNs during the neonatal period in a cohort of preterm infants. Other investigators have applied RS-fMRI to define early forms of RSNs during infancy in former preterm and healthy term-born subjects.<sup>82-85</sup>

RS-fMRI of healthy subjects during early and middle childhood has established the patterns of normative functional cerebral development during this period.<sup>86-89</sup> Although many RSNs are similar to those recognized in adults, consistent differences reported in pediatric subjects include decreased long-range and increased short-range correlations. The clinical significance of these differences remains undetermined. Most recently, RS-fMRI has been applied to investigate differences in RSN development across pediatric disease states. Investigations in older populations have demonstrated disparities in neural networks for many disease states, including Tourette syndrome, attention deficit/hyperactivity disorder, and autism spectrum disorder.<sup>90-92</sup>

### Future Directions

Although studies to date are promising, much work is needed before RS-fMRI can be used routinely in the clinical setting. Further work is needed to compare the various analysis methods and their efficacy in detecting different disease states both in groups and especially in individual subjects. The Human Connectome Project,<sup>93</sup> which is currently in progress, will aid in furthering our understanding of the relationships between functional connectivity and structural connectivity by using advanced MR imaging methods with behavioral and genetic factors.

### Conclusions

RS-fMRI has provided new insights on the functional architecture of the healthy brain. Various RSNs, or collections of regions that have synchronous spontaneous BOLD fluctuations, have been identified, including the DMN and sensorimotor, visual, and attentional networks. While clinical applications of RS-fMRI are still limited, many potential clinical applications are currently being investigated and include pre-surgical planning for patients with brain tumor and epilepsy. Because it is noninvasive and does not require patient cooperation, RS-fMRI may be particularly useful in patients who are not able to undergo currently available methods for lesion localization. Other potential clinical applications include the identification of patients with Alzheimer disease and various other neurologic and psychiatric diseases.

### References

1. Biswal B, Yetkin FZ, Haughton VM, et al. Functional connectivity in the motor cortex of resting human brain using echo-planar MRI. *Magn Reson Med* 1995;34:537-41
2. Beckmann CF, DeLuca M, Devlin JT, et al. Investigations into resting-state connectivity using independent component analysis. *Philos Trans R Soc Lond B Biol Sci* 2005;360:1001-13
3. De Luca M, Beckmann CF, De Stefano N, et al. fMRI resting state networks define distinct modes of long-distance interactions in the human brain. *Neuroimage* 2006;29:1359-67
4. Power JD, Cohen AL, Nelson SM, et al. Functional network organization of the human brain. *Neuron* 2011;72:665-78
5. Smith SM, Fox PT, Miller KL, et al. Correspondence of the brain's functional architecture during activation and rest. *Proc Natl Acad Sci U S A* 2009;106:13040-45
6. Yeo BT, Krienen FM, Sepulcre J, et al. The organization of the human cerebral cortex estimated by intrinsic functional connectivity. *J Neurophysiol* 2011;106:1125-65
7. Raichle ME, MacLeod AM, Snyder AZ, et al. A default mode of brain function. *Natl Acad Sci U S A* 2001;98:676-82
8. Gusnard DA, Raichle ME, Raichle ME. Searching for a baseline: functional imaging and the resting human brain. *Nat Rev Neurosci* 2001;2:685-94
9. Greicius MD, Krasnow B, Reiss AL, et al. Functional connectivity in the resting brain: a network analysis of the default mode hypothesis. *Proc Natl Acad Sci U S A* 2003;100:253-58
10. Damoiseaux JS, Rombouts SA, Barkhof F, et al. Consistent resting-state networks across healthy subjects. *Proc Natl Acad Sci U S A* 2006;103:13848-53
11. van den Heuvel M, Mandl R, and Hulshoff Pol H. Normalized cut group clustering of resting-state FMRI data. *PLoS One* 2008;3:e2001
12. Chai XJ, Castanon AN, Ongur D, et al. Anticorrelations in resting state networks without global signal regression. *Neuroimage* 2012;59:1420-28
13. Zhang Z, Liao W, Zuo XN, et al. Resting-state brain organization revealed by functional covariance networks. *PLoS One* 2011;6:e28817
14. Doucet G, Naveau M, Petit L, et al. Brain activity at rest: a multiscale hierarchical functional organization. *J Neurophysiol* 2011;105:2753-63
15. Golland Y, Golland P, Bentin S, et al. Data-driven clustering reveals a fundamental subdivision of the human cortex into two global systems. *Neuropsychologia* 2008;46:540-53
16. Tomasi D, Volkow ND. Resting functional connectivity of language networks: characterization and reproducibility. *Mol Psychiatry* 2012 Jan 3. [Epub ahead of print]
17. Fox MD, Corbetta M, Snyder AZ, et al. Spontaneous neuronal activity distinguishes human dorsal and ventral attention systems. *Proc Natl Acad Sci U S A* 2006;103:10046-51
18. Seeley WW, Menon V, Schatzberg AF, et al. Dissociable intrinsic connectivity networks for salience processing and executive control. *J Neurosci* 2007;27:2349-56
19. Vincent JL, Kahn I, Snyder AZ, et al. Evidence for a frontoparietal control system revealed by intrinsic functional connectivity. *J Neurophysiol* 2008;100:3328-42
20. Dosenbach NU, Visscher KM, Palmer ED, et al. A core system for the implementation of task sets. *Neuron* 2006;50:799-812
21. Dagli MS, Ingelholm JE, and Haxby JV. Localization of cardiac-induced signal change in fMRI. *Neuroimage* 1999;9:407-15
22. de Munck JC, Gonçalves SI, Faes TJ, et al. A study of the brain's resting state based on alpha band power, heart rate and fMRI. *Neuroimage* 2008;42:112-21
23. Lund TE, Madsen KH, Sidaros K, et al. Non-white noise in fMRI: does modeling have an impact? *Neuroimage* 2006;29:54-66

24. Van Dijk KR, Hedden T, Venkataraman A, et al. **Intrinsic functional connectivity as a tool for human connectomics: theory, properties, and optimization.** *J Neurophysiol* 2010;103:297–321
25. Uddin LQ, Mooshagian E, Zaidel E, et al. **Residual functional connectivity in the split-brain revealed with resting-state functional MRI.** *Neuroreport* 2008;19:703–09
26. Fox MD, Zhang D, Snyder AZ, et al. **The global signal and observed anticorrelated resting state brain networks.** *J Neurophysiol* 2009;101:3270–83
27. Chang C, Glover GH. **Effects of model-based physiological noise correction on default mode network anti-correlations and correlations.** *Neuroimage* 2009;47:1448–59
28. Anderson JS, Druzgal TJ, Lopez-Larson M, et al. **Network anticorrelations, global regression, and phase-shifted soft tissue correction.** *Hum Brain Mapp* 2011;32:919–34
29. Murphy K, Birn RM, Handwerker DA, et al. **The impact of global signal regression on resting state correlations: are anti-correlated networks introduced?** *Neuroimage* 2009;44:893–905
30. Power JD, Barnes KA, Snyder AZ, et al. **Spurious but systematic correlations in functional connectivity MRI networks arise from subject motion.** *Neuroimage* 2012;59:2142–54
31. Satterthwaite TD, Wolf DH, Loughhead J, et al. **Impact of in-scanner head motion on multiple measures of functional connectivity: relevance for studies of neurodevelopment in youth.** *Neuroimage* 2012;60:623–32
32. Van Dijk KR, Sabuncu MR, and Buckner RL. **The influence of head motion on intrinsic functional connectivity MRI.** *Neuroimage* 2012;59:431–38
33. Kundu P, Inati SJ, Evans JW, et al. **Differentiating BOLD and non-BOLD signals in fMRI time series using multi-echo EPI.** *Neuroimage* 2012;60:1759–70
34. Starck T, Remes J, Nikkinen J, et al. **Correction of low-frequency physiological noise from the resting state BOLD fMRI: effect on ICA default mode analysis at 1.5 T.** *J Neurosci Methods* 2010;186:179–85
35. Thomas CG, Harshman RA, Menon RS. **Noise reduction in BOLD-based fMRI using component analysis.** *Neuroimage* 2002;17:1521–37
36. Tohka J, Foerde K, Aron AR, et al. **Automatic independent component labeling for artifact removal in fMRI.** *Neuroimage* 2008;39:1227–45
37. Rosazza C, Minati L, Ghielmetti F, et al. **Functional connectivity during resting-state functional MR imaging: study of the correspondence between independent component analysis and region-of-interest-based methods.** *AJNR Am J Neuroradiol* 2012;33:180–87
38. Behrens TE, Sporns O. **Human connectomics.** *Curr Opin Neurobiol* 2012;22:144–53
39. Bullmore E, Sporns O. **Complex brain networks: graph theoretical analysis of structural and functional systems.** *Nat Rev Neurosci* 2009;10:186–98
40. Eguíluz VM, Chialvo DR, Cecchi GA, et al. **Scale-free brain functional networks.** *Phys Rev Lett* 2005;94:018102
41. Fair DA, Cohen AL, Power JD, et al. **Functional brain networks develop from a “local to distributed” organization.** *PLoS Comput Biol* 2009;5:e1000381
42. Salvador R, Suckling J, Coleman MR, et al. **Neurophysiological architecture of functional magnetic resonance images of human brain.** *Cereb Cortex* 2005;15:1332–42
43. Salvador R, Suckling J, Schwarzbauer C, et al. **Undirected graphs of frequency-dependent functional connectivity in whole brain networks.** *Philos Trans R Soc Lond B Biol Sci* 2005;360:937–46
44. van den Heuvel MP, Stam CJ, Boersma M, et al. **Small-world and scale-free organization of voxel-based resting-state functional connectivity in the human brain.** *Neuroimage* 2008;43:528–39
45. Sporns O, Honey CJ, Kotter R. **Identification and classification of hubs in brain networks.** *PLoS One* 2007;2:e1049
46. Cordes D, Haughton V, Carew JD, et al. **Hierarchical clustering to measure connectivity in fMRI resting-state data.** *Magn Reson Imaging* 2002;20:305–17
47. Lee MH, Hacker CD, Snyder AZ, et al. **Clustering of resting state networks.** *PLoS One* 2012;7:e40370
48. Bellec P, Rosa-Neto P, Lyttelton OC, et al. **Multi-level bootstrap analysis of stable clusters in resting-state fMRI.** *Neuroimage* 2010;51:1126–39
49. Pereira F, Mitchell T, Botvinick M. **Machine learning classifiers and fMRI: a tutorial overview.** *Neuroimage* 2009;45:S199–209
50. Hacker CD, Laumann TO, Szrama NP, et al. **Multi-layer neural network classification of resting state networks.** In: *Proceedings of the Annual Meeting of the Society for Neuroscience*. Washington, DC. November 12–16, 2011
51. Dosenbach NU, Nardos B, Cohen AL, et al. **Prediction of individual brain maturity using fMRI.** *Science* 2010;329:1358–61
52. Biswal BB, Mennes M, Zuo XN, et al. **Toward discovery science of human brain function.** *Proc Natl Acad Sci U S A* 2010;107:4734–39
53. Shehzad Z, Kelly AM, Reiss PT, et al. **The resting brain: unconstrained yet reliable.** *Cereb Cortex* 2009;19:2209–29
54. Chou YH, Panych LP, Dickey CC, et al. **Investigation of long-term reproducibility of intrinsic connectivity network mapping: a resting-state fMRI study.** *AJNR Am J Neuroradiol* 2012;33:833–38
55. Zhang D, Raichle ME. **Disease and the brain’s dark energy.** *Nat Rev Neurol* 2010;6:15–28
56. Liu H, Buckner RL, Talukdar T, et al. **Task-free presurgical mapping using functional magnetic resonance imaging intrinsic activity.** *J Neurosurg* 2009;111:746–54
57. Kokkonen SM, Nikkinen J, Remes J, et al. **Preoperative localization of the sensorimotor area using independent component analysis of resting-state fMRI.** *Magn Reson Imaging* 2009;27:733–40
58. Shimony JS, Zhang D, Johnston JM, et al. **Resting-state spontaneous fluctuations in brain activity: a new paradigm for presurgical planning using fMRI.** *Acad Radiol* 2009;16:578–83
59. Fukunaga M, Horowitz SG, van Gelderen P, et al. **Large-amplitude, spatially correlated fluctuations in BOLD fMRI signals during extended rest and early sleep stages.** *Magn Reson Imaging* 2006;24:979–92
60. Kiviniemi V, Kantola JH, Jauhainen J, et al. **Independent component analysis of nondeterministic fMRI signal sources.** *Neuroimage* 2003;19:253–60
61. Peltier SJ, Kerssens C, Hamann SB, et al. **Functional connectivity changes with concentration of sevoflurane anesthesia.** *Neuroreport* 2005;16:285–88
62. Zhang D, Johnston JM, Fox MD, et al. **Preoperative sensorimotor mapping in brain tumor patients using spontaneous fluctuations in neuronal activity imaged with functional magnetic resonance imaging: initial experience.** *Neurosurgery* 2009;65:226–36
63. Kokkonen SM, Kiviniemi V, Makiranta M, et al. **Effect of brain surgery on auditory and motor cortex activation: a preliminary functional magnetic resonance imaging study.** *Neurosurgery* 2005;57:249–56, discussion 249–56
64. Sanai N, Mirzadeh Z, Berger MS. **Functional outcome after language mapping for glioma resection.** *N Engl J Med* 2008;358:18–27
65. Stufflebeam SM, Liu H, Sepulcre J, et al. **Localization of focal epileptic discharges using functional connectivity magnetic resonance imaging.** *J Neurosurg* 2011;114:1693–97
66. Zhang X, Tokoglu F, Negishi M, et al. **Social network theory applied to resting-state fMRI connectivity data in the identification of epilepsy networks with iterative feature selection.** *J Neurosci Methods* 2011;199:129–39
67. Bettus G, Bartolomei F, Confort-Gouny S, et al. **Role of resting state functional connectivity MRI in presurgical investigation of mesial temporal lobe epilepsy.** *J Neurol Neurosurg Psychiatry* 2010;81:1147–54
68. Pizoli CE, Shah MN, Snyder AZ, et al. **Resting-state activity in development and maintenance of normal brain function.** *Proc Natl Acad Sci U S A* 2011;108:11638–43
69. Supekar K, Menon V, Rubin D, et al. **Network analysis of intrinsic functional brain connectivity in Alzheimer’s disease.** *PLoS Comput Biol* 2008;4:e1000100
70. Koch W, Teipel S, Mueller S, et al. **Diagnostic power of default mode network resting state fMRI in the detection of Alzheimer’s disease.** *Neurobiol Aging* 2012;33:466–78
71. Dai Z, Yan C, Wang Z, et al. **Discriminative analysis of early Alzheimer’s disease using multi-modal imaging and multi-level characterization with multi-classifier (M3).** *Neuroimage* 2012;59:2187–95
72. Chen G, Ward BD, Xie C, et al. **Classification of Alzheimer disease, mild cognitive impairment, and normal cognitive status with large-scale network analysis based on resting-state functional MR imaging.** *Radiology* 2011;259:213–21
73. Zhou J, Greicius MD, Gennatas ED, et al. **Divergent network connectivity changes in behavioural variant frontotemporal dementia and Alzheimer’s disease.** *Brain* 2010;133:1352–67
74. Vanhaudenhuyse A, Noirhomme Q, Tshibanda LJ, et al. **Default network connectivity reflects the level of consciousness in non-communicative brain-damaged patients.** *Brain* 2010;133:161–71
75. Craddock RC, Holtzheimer PE 3rd, Hu XP, et al. **Disease state prediction from resting state functional connectivity.** *Magn Reson Med* 2009;62:1619–28
76. Bassett DS, Nelson BG, Mueller BA, et al. **Altered resting state complexity in schizophrenia.** *Neuroimage* 2012;59:2196–207
77. Shen H, Wang L, Liu Y, et al. **Discriminative analysis of resting-state functional connectivity patterns of schizophrenia using low dimensional embedding of fMRI.** *Neuroimage* 2010;49:3110–21
78. Anderson JS, Nielsen JA, Froehlich AL, et al. **Functional connectivity magnetic resonance imaging classification of autism.** *Brain* 2011;134:3742–54
79. Zhu CZ, Zang YF, Cao QJ, et al. **Fisher discriminative analysis of resting-state brain function for attention-deficit/hyperactivity disorder.** *Neuroimage* 2008;40:110–20
80. Smyser CD, Inder TE, Shimony JS, et al. **Longitudinal analysis of neural network development in preterm infants.** *Cereb Cortex* 2010;20:2852–62
81. Doria V, Beckmann CF, Arichi T, et al. **Emergence of resting state networks in the preterm human brain.** *Proc Natl Acad Sci U S A* 2010;107:20015–20
82. Damaraju E, Phillips JR, Lowe JR, et al. **Resting-state functional connectivity differences in premature children.** *Front Syst Neurosci* 2010;4:pii:23
83. Fransson P, Aden U, Blennow M, et al. **The functional architecture of the infant brain as revealed by resting-state fMRI.** *Cereb Cortex* 2011;21:145–54
84. Gao W, Zhu H, Giovanello KS, et al. **Evidence on the emergence of the brain’s default network from 2-week-old to 2-year-old healthy pediatric subjects.** *Proc Natl Acad Sci U S A* 2009;106:6790–95
85. Lin W, Zhu Q, Gao W, et al. **Functional connectivity MR imaging reveals cortical functional connectivity in the developing brain.** *AJNR Am J Neuroradiol* 2008;29:1883–89

86. Fair DA, Cohen AL, Dosenbach NU, et al. **The maturing architecture of the brain's default network.** *Proc Natl Acad Sci U S A* 2008;105:4028–32
87. Fair DA, Dosenbach NU, Church JA, et al. **Development of distinct control networks through segregation and integration.** *Proc Natl Acad Sci U S A* 2007;104:13507–12
88. Kelly AM, Di Martino A, Uddin LQ, et al. **Development of anterior cingulate functional connectivity from late childhood to early adulthood.** *Cereb Cortex* 2009;19:640–57
89. Thomason ME, Chang CE, Glover GH, et al. **Default-mode function and task-induced deactivation have overlapping brain substrates in children.** *Neuroimage* 2008;41:1493–503
90. Church JA, Fair DA, Dosenbach NU, et al. **Control networks in paediatric Tourette syndrome show immature and anomalous patterns of functional connectivity.** *Brain* 2009;132:225–38
91. Fair DA, Posner J, Nagel BJ, et al. **Atypical default network connectivity in youth with attention-deficit/hyperactivity disorder.** *Biol Psychiatry* 2010;68:1084–91
92. Jones TB, Bandettini PA, Kenworthy L, et al. **Sources of group differences in functional connectivity: an investigation applied to autism spectrum disorder.** *Neuroimage* 2010;49:401–14
93. Van Essen DC, Ugurbil K, Auerbach E, et al. **The Human Connectome Project: a data acquisition perspective.** *Neuroimage* 2012 Feb 17. [Epub ahead of print]