

Are your MRI contrast agents cost-effective?

Learn more about generic Gadolinium-Based Contrast Agents.



**FRESENIUS
KABI**

caring for life

AJNR

**Normal-Appearing White Matter
Permeability Distinguishes Poor Cognitive
Performance in Processing Speed and
Working Memory**

A. Eilaghi, A. Kassner, I. Sitartchouk, P.L. Francis, R.
Jakubovic, A. Feinstein and R.I. Aviv

This information is current as
of April 10, 2024.

AJNR Am J Neuroradiol published online 30 May 2013
<http://www.ajnr.org/content/early/2013/05/30/ajnr.A3539>

Normal-Appearing White Matter Permeability Distinguishes Poor Cognitive Performance in Processing Speed and Working Memory

A. Eilaghi, A. Kassner, I. Sitartchouk, P.L. Francis, R. Jakubovic, A. Feinstein, and R.I. Aviv



ABSTRACT

BACKGROUND AND PURPOSE: Secondary-progressive MS is characterized by reduced acute inflammation and contrast enhancement but with increased axonal degeneration and cognitive/clinical disability that worsens with advanced disease. Relative recirculation, extracted from DSC is a surrogate measure of BBB integrity. We hypothesized that normal-appearing white matter relative recirculation is reduced in cognitively impaired compared with nonimpaired secondary-progressive MS, reflecting more advanced disease.

MATERIALS AND METHODS: Cognitive performance was classified as impaired or nonimpaired by use of Minimal Assessment of Cognitive Function In MS test components. Demographic data, brain parenchymal fraction, WM lesion fraction, and weighted mean normal-appearing white matter relative recirculation were compared in cognitively dichotomized groups. Univariate and multivariate logistic regressions were used to study the association between cognitive test results and normal-appearing white matter relative recirculation.

RESULTS: The mean (SD) age of 36 patients with secondary-progressive MS studied was 55.9 ± 9.3 years; 13 of 36 (36%) patients were male. A highly significant difference between normal-appearing white matter relative recirculation and WM lesion relative recirculation was present for all patients ($P < .001$). Normal-appearing white matter relative recirculation in impaired patients was significantly lower than in nonimpaired subjects for the Symbol Digit Modalities Test ($P = .007$), Controlled Word Association Test ($P = .008$), and Paced Auditory Serial Addition Test ($P = .024$). The Expanded Disability Status Scale demonstrated an inverse correlation with normal-appearing white matter relative recirculation ($r = -0.319$, $P = .075$). After adjustment for confounders, significant normal-appearing white matter relative recirculation reduction persisted for the Symbol Digit Modalities Test ($P = .023$) and the Paced Auditory Serial Addition Test ($P = .047$) but not for the Controlled Word Association Test ($P = .13$) in impaired patients.

CONCLUSIONS: Significant normal-appearing white matter relative recirculation reduction exists in cognitively impaired patients with secondary-progressive MS, localizing to the domains of processing speed and working memory.

ABBREVIATIONS: rR = relative recirculation; NAWM = normal-appearing white matter; SPMS = secondary-progressive MS; RRMS = relapsing-remitting MS

MS is the most common inflammatory demyelinating disease of the central nervous system. Although the underlying etiology of the disease is still largely unknown, inflammation, demy-

elination, and neurodegeneration are pathologically implicated and eventually cause long-term impairment.¹ Cognitive impairment is reported in 40–70% of MS cases,² and the frequency and expression of impairment increases with disease duration.³ Secondary-progressive MS is clinically distinct from relapsing-remitting MS. Patients with secondary-progressive MS do not manifest acute attacks⁴ and demonstrate diminished response to immunosuppressives,⁴ reduced lesional gadolinium enhancement,⁵ and diffuse NAWM inflammation and axonal injury.⁶

Traditional structural markers including WM lesion load and cortical and WM atrophy demonstrate variable correlation with cognitive impairment.⁷ Advanced MR imaging techniques are increasingly being investigated as surrogate markers of cognition. Techniques such as magnetization transfer imaging,⁸ diffusion-

Received November 8, 2012; accepted after revision December 19.

From the Department of Medical Imaging (A.E., P.L.F., R.J., R.I.A.) and Department of Psychiatry (A.F.), Sunnybrook Health Sciences Centre, Toronto, Ontario, Canada; Department of Medical Biophysics (A.E.), University of Western Ontario, London, Ontario, Canada; Department of Medical Imaging (A.K., I.S., R.I.A.), University of Toronto, Toronto, Ontario, Canada; and Department of Physiology and Experimental Medicine (A.K.), Hospital for Sick Children, Toronto, Ontario, Canada.

Please address correspondence to Richard I. Aviv, MBChB, Sunnybrook Health Sciences Centre, 2075 Bayview Ave, Room AG 31, Toronto, Ontario M4N 3M5, Canada; e-mail: richard.aviv@sunnybrook.ca

Indicates article with supplemental on-line tables

<http://dx.doi.org/10.3174/ajnr.A3539>

weighted imaging,⁹ functional MR imaging,¹⁰ MR spectroscopy,¹¹ and perfusion imaging¹² have previously been described. In RRMS, localized inflammation and BBB breakdown depicted with gadolinium-enhanced T1-weighted MR imaging are traditionally associated with disease activity.^{13,14} Unlike RRMS, SPMS is characterized by reduced acute inflammation and few contrast-enhancing lesions.⁵ A number of mechanisms are described for the reduced apparent inflammation, including “compartmentalization” of the inflammatory response behind an intact BBB,⁶ balanced inflammation, activation of endogenous neuroprotection mechanisms,^{15,16} and continued neurodegeneration independent of inflammation.^{6,17} Despite a reduction of acute inflammatory changes, SPMS is associated with a higher prevalence of axonal degeneration, disability, and cognitive impairment, particularly in the domains of attention and processing speed. These functional domains may therefore serve as markers of more advanced axonal degeneration, distinguishing SPMS subgroups with more advanced disease.¹⁸

Relative recirculation (rR), a parameter extracted from DSC MR imaging, is shown to successfully identify regions of BBB breakdown in patients with brain tumors,^{19,20} Moyamoya syndrome,²¹ and acute ischemic stroke.²² rR is a quantitative measure of contrast recirculation abnormalities after the first pass and is a practical surrogate for BBB permeability estimates that does not necessitate a separate dynamic contrast-enhanced MR imaging acquisition.²² The role of rR as a surrogate measure of BBB integrity in MS has not been evaluated. The purpose of this study was to compare rR in SPMS subgroups with and without cognitive impairment. We hypothesized that NAWM rR would be lower in cognitively impaired compared with nonimpaired patients with SPMS, reflecting a more advanced disease state. We also hypothesized that rR would be higher in WM lesions compared with NAWM.

MATERIALS AND METHODS

Patient Cohort

The study was performed in accordance with our institution’s guidelines for human research. Written informed consent was obtained for all imaging studies. Patients with clinically diagnosed SPMS were prospectively recruited from tertiary referral clinics. Two senior neurologists (20 years of experience) screened potential subjects to ensure they fulfilled the revised McDonald criteria. Exclusion criteria included patients with a history of drug/alcohol abuse, disease modifying drug or steroid use within the last 6 months, premorbid psychiatric history, head injury with loss of consciousness, concurrent medical diseases (eg, cerebrovascular disease), and MR imaging or contrast agent contraindications. Thirty-six patients with secondary-progressive MS fulfilled the screening criteria and were included in the study. Demographic data obtained included age, sex, years of education, and disease duration. Expanded Disability Status Scale assessment and cognitive testing was completed by a senior neurologist. No Expanded Disability Status Scale threshold was applied to patient eligibility. Neurologic examination, Expanded Disability Status Scale, and neurocognitive assessments were completed in order, on the same day within 6 hours of each other.

Imaging Protocol

Imaging parameters included volumetric T1 turbo field-echo (TR/TE/flip angle: 9.5 ms/2.3 ms/12°; number of averages: 1; FOV: 24 cm; matrix size: 256 × 164; section thickness: 1.4 mm); proton attenuation/T2 (TR/TE/flip angle: 2900 ms/10.7 ms/90°; FOV: 23 cm; matrix: 256 × 261; section thickness: 3 mm); field-echo echo-planar imaging DSC (for rR calculation) (TR/TE/flip angle: 1610 ms/30 ms/60°; FOV: 22 cm; section thickness: 4 mm; matrix: 128 × 128; in-plane voxel size: 1.7 × 1.7 mm; no gap; signal bandwidth: 1260 Hz/pixel). Ten milliliters of gadobutrol (Gadovist; Bayer, Toronto, Canada) (1 mmol/mL) was administered by a power injector at a rate of 5 mL/s followed by a 25-mL bolus of saline at 5 mL/s. Sixty volumes were acquired at 1.6-second intervals with the injection occurring at the 10th volume. DSC acquisition covered 10 cm (25 sections at 4 mm per section) and extended from the cerebral convexity to the midbrain level. Acquisition placement was supervised by an experienced neuro-radiologist (8 years of experience) to ensure consistent coverage across patients.

Image Analysis

Gray matter, WM, and CSF were segmented from T1-weighted scans by use of a previously validated tissue segmentation method.²³ Segmented regions were imported into Analyze 8.0 (Analyze AVW, Rochester, Minnesota),²⁴ and WM lesion regions of interest were manually drawn. Brain parenchymal and WM lesion fractions were calculated as previously described.²⁵ NAWM regions of interest were selected from within the WM tissue by use of four 16-voxel blocks located in anterior and posterior regions of both hemispheres. All WM lesion and NAWM regions of interest were subsequently co-registered to the equivalent DSC-MR imaging datasets by means of the rigid body algorithm of Statistical Parametric Mapping version 8 (SPM8; Wellcome Department of Imaging Neuroscience, London, United Kingdom). Contrast enhancement was systematically evaluated by use of a cross-reference tool by comparing FLAIR and proton attenuation/T2 lesions with precontrast and postcontrast imaging.

rR was calculated within each region of interest by use of in-house software (MR Analyst version 4.0) developed in Matlab (MathWorks, Natick, Massachusetts).²² In brief, selected DSC perfusion datasets were preprocessed by inspecting signal intensity versus time curves for outlier data points. Spurious points were identified by visual inspection and replaced with interpolated values. The first 2 dynamic phases were automatically omitted because magnetization cannot be assumed to have reached steady-state this early in the series. For each region of interest and each DSC image, the T2* relaxation rate was determined by evaluating the change in signal intensity from baseline and assuming²⁶:

$$1) \quad \Delta R_{2* \text{ measured}} = -\ln(\Delta SI)/TE$$

$\Delta R_{2* \text{ measured}}$ data were subsequently fitted to a γ -variate function to produce a theoretic first-pass $\Delta R_{2* \text{ theoretic}}$ curve, that is, one that was free of recirculation effects. The rR was calculated as described by Kassner et al²⁷ as:

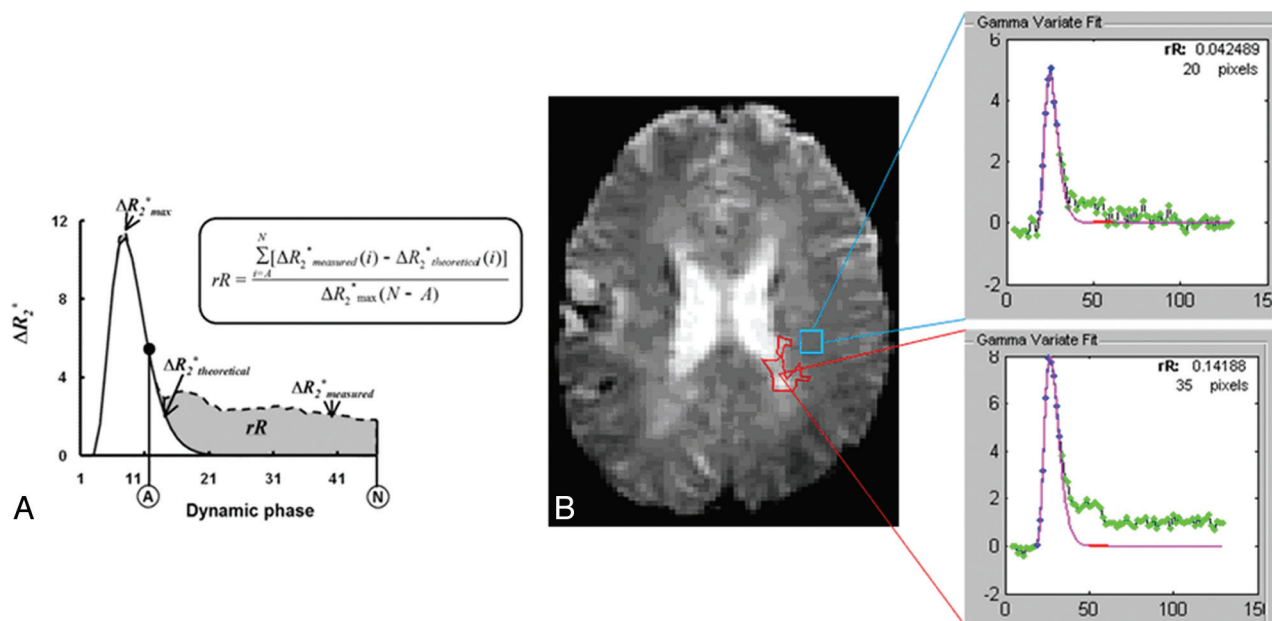


FIG 1. A, Estimation of rR by use of the ΔR_2^* versus time curve measured from the DSC regions of interest ($\Delta R_2^{*measured}$) as well as its γ -variate fit (ΔR_2^{*fit}). ΔR_2^{*max} is the maximum of $\Delta R_2^{*theoretical}$. A is the dynamic phase corresponding to the onset of the recirculation phase measured at half-height of the descending aspect of the ΔR_2^* curve, and N is the final DSC phase. B, Example of rR measurement: case 733, section 11, perfusion scan. MS lesion (red region of interest) and NAWM (blue region of interest) and rR calculation results. rR for WM lesion is 0.142; rR for NAWM region is 0.042.

$$2) \quad rR = \frac{\sum_{i=A}^N [\Delta R_2^{*measured}(i) - \Delta R_2^{*theoretical}(i)]}{\Delta R_2^{*max}(N - A)}$$

where ΔR_2^{*max} is the maximum of $\Delta R_2^{*theoretical}$, A is the dynamic phase corresponding to the onset of the recirculation phase measured at half-height of the descending aspect of the ΔR_2^* curve, and N is the final dynamic phase (Fig 1). Mean WM lesion rR and NAWM rR were determined for each patient by calculating the weighted average over WM lesion and NAWM regions of interest, respectively.

Cognitive Assessment

Cognitive assessments were performed by a neuropsychiatrist (20 years of experience) by use of an MS-specific neurocognitive tool, which is a 90-minute neurocognitive test proposed by an expert panel for clinical monitoring and research.²⁸ The Minimal Assessment of Cognitive Function in Multiple Sclerosis is a comprehensive and efficient assessment tool consisting of 7 neuropsychological tests: Paced Auditory Serial Addition Test [working memory/processing speed], Symbol Digit Modalities Test [processing speed], California Verbal Learning Test, 2nd edition [verbal memory], Brief Visuospatial Memory Test, revised [visuospatial memory], Delis-Kaplan Executive Function System [executive function], Controlled Word Association Test [verbal fluency], and judgment of line orientation [visuospatial perception]. Impairment on an individual test was defined as scoring >1.5 standard deviations below normative data from healthy controls. Beck Depression Inventory and the Expanded Disability Status Scale were also obtained.

Statistical Analysis

Univariate comparisons of demographic data for impaired and nonimpaired groups were performed by use of the Mann-Whitney rank sum test. Demographic data were expressed as mean (SD) for continuous variables such as age, education, and disease duration; median with interquartile range for categorical variables such as the Beck Depression Inventory and the Expanded Disability Status Scale; and proportions for binary data such as sex. Segmented regional data for brain parenchymal fraction, gray matter fraction, WM fraction, and WM lesion fraction were similarly compared. The 10th and 90th percentile values for rR distribution of each group were calculated, and values beyond these limits were excluded. For each cognitive test, potentially confounding factors of age, sex, years of education, disease duration, Beck Depression Inventory score, Expanded Disability Status Scale, brain parenchymal fraction, WM fraction, WM lesion fraction, and gray matter fraction were compared. Potential confounders with P values <0.3 (On-line Table) were included in further multivariate logistic regression. All statistical analyses were performed in SigmaStat3.5 (Systat Software, San Jose, California).

RESULTS

There were 36 patients, with a mean (SD) age of 55.9 ± 9.3 years; 13 of 36 (36%) were male. Mean (SD) years of education and disease duration were 15.3 (2.6) and 20.4 (10.0). Median (IQR) for the Beck Depression Inventory and the Expanded Disability Status Scale were 8 (5–11) and 6.5 (6.0–7.0). Mean (SD) brain parenchymal fraction, WM fraction, WM lesion fraction, and gray matter fraction were 80.6 (4.1), 36.7 (3.0), 1.4 (1.2), and 41.5 (2.4), respectively. A highly significant difference between

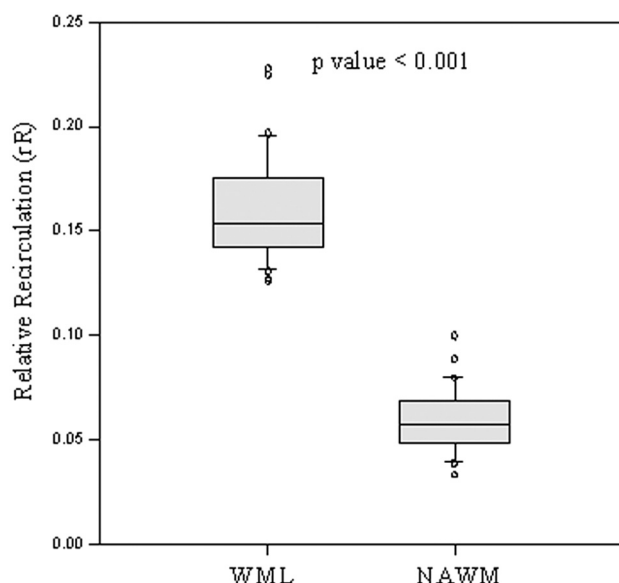


FIG 2. rR values of NAWM and WM lesion.

Outcomes of multivariate logistic regression analyses for NAWM rR after controlling for potential confounders

Cognitive Test	Odds Ratio (5–95% CI)	P Value
SDMT	0.177 (0.040–0.785)	.023
COWAT	0.662 (0.002–2.226)	.130
PASAT 1.6	0.053 (0.003–0.961)	.047

Note:—SDMT indicates Symbol Digit Modalities Test; COWAT, Controlled Word Association Test; PASAT, Paced Auditory Serial Addition Test.

Confounders for Symbol Digit Modalities Test: brain parenchymal fraction, WM fraction, WM lesion fraction; Controlled Word Association Test: WM fraction, WM lesion fraction, gray matter fraction; and Paced Auditory Serial Addition Test: brain parenchymal fraction, WM fraction, WM lesion fraction.

NAWM rR continues to be significantly lower in the impaired group for both the Symbol Digit Modalities Test and the Paced Auditory Serial Addition Test.

NAWM rR and WM lesion rR was present for all patients ($P < .001$; Fig 2). No enhancing WM lesions were present in either SPMS subgroup.

No significant differences between NAWM rR in impaired and nonimpaired patients were observed for the Brief Visuospatial Memory Test ($P = .161$), judgment of line orientation ($P = .493$), California Verbal Learning Test ($P = .669$), or Delis-Kaplan Executive Function System ($P = .680$) impairment. NAWM rR was significantly lower in impaired patients than in nonimpaired subjects for the Symbol Digit Modalities Test ($P = .007$), Controlled Word Association Test ($P = .008$), and Paced Auditory Serial Addition Test ($P = .024$) (On-line Table). The mean WM lesion fraction was higher in impaired patients (0.02) than in nonimpaired (0.01) for all tests (Symbol Digit Modalities Test: $P = .020$; Controlled Word Association Test: $P = .014$; and Paced Auditory Serial Addition Test: $P = .033$). No significant correlation was found between NAWM rR with brain parenchymal fraction ($\rho = 0.010$; $P = .955$), WM fraction ($\rho = 0.187$; $P = .272$), WM lesion fraction ($\rho = -0.260$; $P = .124$), or GM fraction ($\rho = -0.295$; $P = .080$).

After adjusting for confounders (Table 1), significant NAWM rR reduction persisted in impaired patients for the Symbol Digit Modalities Test ($P = .023$) and Paced Auditory Serial Addition Test ($P = .047$) (Table) but not for the Controlled Word Association Test impairment ($P = .13$). Figure 3 illustrates the distribu-

tion of rR values of NAWM for impaired and nonimpaired Symbol Digit Modalities Test and Paced Auditory Serial Addition Test groups. The Paced Auditory Serial Addition Test and Symbol Digit Modalities Test in impaired patients demonstrated a 3.2- and 4.6-year longer disease duration than in their nonimpaired counterparts. The difference did not however reach clinical significance ($P = .3$ and $P = .6$, respectively).

The Expanded Disability Status Scale demonstrated an inverse correlation with NAWM rR (correlation coefficient = -0.319 , $P = .075$).

DISCUSSION

NAWM rR reduction was present in patients with secondary-progressive MS with poor performance on the Paced Auditory Serial Addition Test and Symbol Digit Modalities Test representing deficits in processing speed and working memory. NAWM rR values were significantly lower in impaired patients persisting after correction for potential confounding factors. Secondly, WM lesion rR was higher than NAWM for all patients irrespective of cognitive impairment and in the absence of overt contrast enhancement.

Acute inflammation and BBB permeability in RRMS, manifesting as enhancing lesions, are linked with clinical and cognitive disability. The progressive phase of MS, however has a distinct disease pathogenesis compared with the acute or relapsing-remitting phases.^{29,30} SPMS is characterized by progressive axonal degeneration with clinical and cognitive disability but little lesion enhancement. A number of explanations for these findings are offered. Concepts of balanced inflammation, activation of endogenous neuroprotection mechanisms,^{15,16} entrapped inflammation behind intact or repaired BBB,⁶ and continued neurodegeneration independent of inflammation¹⁷ were previously proposed. Zeis et al¹⁵ demonstrated that genes known to be involved in anti-inflammatory and protective mechanisms are upregulated more regularly than pro-inflammatory mechanisms in NAWM in progressive MS. Correlation between brain atrophy and cognitive impairment increases with longer disease duration and SPMS subtype, in which impairment is reported in 50% of patients.^{2,3,18} In the present study, therefore, the association between cognitive impairment as a marker of disease severity and rR reduction as a surrogate marker of reduced measurable inflammation is expected. Supporting the association between disease duration, increased disability, and inflammation is the observed negative correlation between NAWM rR and disease severity (measured by the Expanded Disability Status Scale) in the present study.³¹ Additionally, cognitively impaired patients demonstrated longer disease duration than did cognitively nonimpaired patients, though this did not reach statistical significance.

Information processing speed and working memory are the most affected cognitive domains in patients with MS.^{3,32} The Symbol Digit Modalities Test and Paced Auditory Serial Addition Test have been shown in large series to be sensitive indicators of impairments in these domains.³³ Both the Symbol Digit Modalities Test and Paced Auditory Serial Addition Test correlate with several brain imaging findings such as lesion volume and central cerebral atrophy.^{34–36} The correlation expectedly increases with disease duration and SPMS subtype reflecting greater disease burden and axonal degeneration.¹⁸ Previous studies also show that

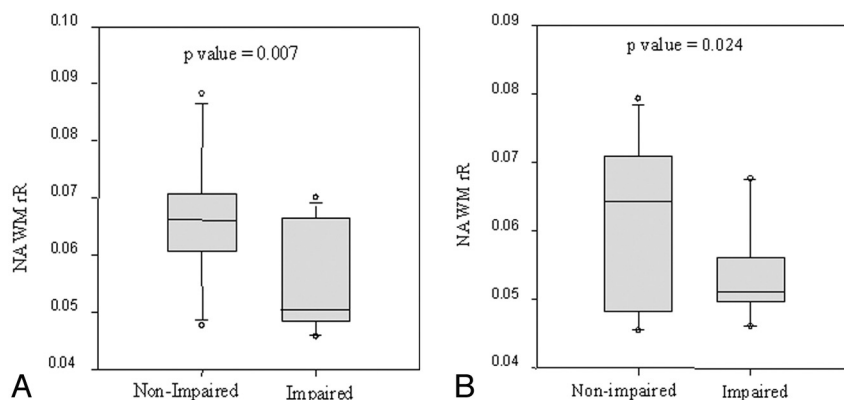


FIG 3. rR values of NAWM are significantly lower in impaired than in nonimpaired groups by use of A, the Symbol Digit Modalities Test ($P = .007$), and B, the Paced Auditory Serial Addition Test ($P = .024$).

NAWM abnormalities, even independent of lesion location, may correlate with cognition response.³⁷ NAWM abnormalities measured by diffusion-weighted MR imaging also predict the speed of information deficits in MS.^{3,14} Our study, like others,³ highlights the need for longitudinal study of associations between NAWM abnormalities and cognitive impairment.

In RRMS, contrast enhancement indicates increased risk of relapses and may also be associated with long-term dysfunction.³⁸ However, contrast enhancement is weakly correlated with clinical attacks³⁹ and is age-dependent.⁴⁰ For enhancement to be present, a critical but unknown degree of BBB permeability must be present. Prior quantitative analysis of enhancement demonstrates the dose and time dependency of enhancement and the relative insensitivity of qualitative designation of enhancement.⁴¹ rR as a surrogate marker of permeability was first studied in brain tumors^{19,20} and Moyamoya syndrome.²¹ More recently, rR was shown to strongly correlate ($r = 0.67$) with an established measure of BBB permeability (KPS) in acute ischemic stroke.²² Relative recirculation has the advantage of being extracted from standard DSC-MR imaging acquisitions without the need for a further contrast injection required for KPS determination. This is particularly important given the relationship between increasing contrast use and nephrogenic systemic fibrosis.⁴² Additionally, unlike KPS, the technique is model-free, with no need to obtain an input function avoiding a potential source of noise,⁴³ as recently described.⁴⁴ Last, rR provides a surrogate measure of BBB permeability as a continuum as compared with the current “binary” view of contrast enhancement as present or absent.

The study is limited by a relatively small sample size. As an exploratory study, we analyzed a strictly homogeneous selection of patients with secondary-progressive MS, controlling for multiple potentially confounding structural parameters. Pragmatically, because of high lesion load, NAWM was selected from the bilateral centrum semiovale, representing the largest WM region available for interrogation. Cognition represents a complex interplay of multiple domains that cannot be captured by a single region of interest at any location. However, injury to the centrum is strongly associated with neurocognitive dysfunction in leukoaraiosis,⁴⁵ carbon monoxide poisoning,⁴⁶ and trauma,⁴⁷ potentially

mediated by “disconnection” of important projection and association fibers.⁴⁵ However, despite these limitations, significant results were obtained for the Paced Auditory Serial Addition Test and the Symbol Digit Modalities Test, both sensitive indicators of information processing speed and working memory. Although perfusion and permeability techniques offer potential useful adjuncts to conventional imaging for monitoring disease activity, they are affected by recent bouts of acute inflammation, disease-modifying drugs, and steroid use. These limitations may limit their applicability in relapsing-remitting MS subgroups as the result of the heterogeneous nature of treatment and in-

flammation present but are less of a concern within the secondary-progressive MS subgroup. We limited our focus to patients with secondary-progressive MS because of the higher rate of cognitive impairment and relative stability of the disease. Future studies would benefit from control comparison and well-controlled relapsing-remitting MS cohorts. Nevertheless, the results appear clinically meaningful, warranting further exploration of the association between rR, cognition, disease progression, and treatment response. If an association is found, rR could be a useful target for future pharmacologic and rehabilitative treatment strategies.

CONCLUSIONS

Significant NAWM rR reduction exists in cognitively impaired patients with SPMS, localizing to the domains of processing speed and working memory.

Disclosures: Andrea Kassner—RELATED: Grant: Canada Research Chair, Comments: Salary award and research allowance. Anthony Feinstein—UNRELATED: Grants/Grants Pending: MS Society of Canada; * Payment for Lectures (including service on speakers bureaus): Speakers honoraria paid to me from Merck Serono, Biogen, Teva, and Novartis; Royalties: Cambridge University Press. Richard Aviv—RELATED: Grant: MS Society; * PSI; * (*money paid to institution).

REFERENCES

- Barnett MH, Sutton I. **The pathology of multiple sclerosis: a paradigm shift.** *Curr Opin Neurol* 2006;19:242–47
- Chiaravalloti ND, DeLuca J. **Cognitive impairment in multiple sclerosis.** *Lancet Neurol* 2008;7:1139–51
- Filippi M, Rocca MA, Benedict RH, et al. **The contribution of MRI in assessing cognitive impairment in multiple sclerosis.** *Neurology* 2010;75:2121–28
- Compston A, Coles A. **Multiple sclerosis.** *Lancet* 2008;372:1502–17
- Soon D, Tozer DJ, Altmann DR, et al. **Quantification of subtle blood-brain barrier disruption in non-enhancing lesions in multiple sclerosis: a study of disease and lesion subtypes.** *Mult Scler* 2007;13:884–94
- Kutzelnigg A, Lucchinetti CF, Stadelmann C, et al. **Cortical demyelination and diffuse white matter injury in multiple sclerosis.** *Brain* 2005;128(Part 11):2705–12
- Sperling RA, Guttmann CR, Hohol MJ, et al. **Regional magnetic resonance imaging lesion burden and cognitive function in multiple sclerosis: a longitudinal study.** *Arch Neurol* 2001;58:115–21
- van Buchem MA, Grossman RI, Armstrong C, et al. **Correlation of**

- volumetric magnetization transfer imaging with clinical data in MS. *Neurology* 1998;50:1609–17
9. Benedict RH, Bruce J, Dwyer MG, et al. Diffusion-weighted imaging predicts cognitive impairment in multiple sclerosis. *Mult Scler* 2007;13:722–30
10. Mainiero C, Caramia F, Pozzilli C, et al. fMRI evidence of brain reorganization during attention and memory tasks in multiple sclerosis. *Neuroimage* 2004;21:858–67
11. Penny S, Khaleeli Z, Cipolotti L, et al. Early imaging predicts later cognitive impairment in primary progressive multiple sclerosis. *Neurology* 2010;74:545–52
12. Inglese M, Adhya S, Johnson G, et al. Perfusion magnetic resonance imaging correlates of neuropsychological impairment in multiple sclerosis. *J Cereb Blood Flow Metab* 2008;28:164–71
13. Zivadinov R, Sepcic J. [Use of magnetic resonance imaging in the diagnosis and prognosis of multiple sclerosis]. *Lijec Vjesn* 2006;128:295–308
14. Filippi M, Agosta F. Imaging biomarkers in multiple sclerosis. *J Magn Reson Imaging* 2010;31:770–88
15. Zeis T, Graumann U, Reynolds R, et al. Normal-appearing white matter in multiple sclerosis is in a subtle balance between inflammation and neuroprotection. *Brain* 2008;131(Part 1):288–303
16. Graumann U, Reynolds R, Steck AJ, et al. Molecular changes in normal appearing white matter in multiple sclerosis are characteristic of neuroprotective mechanisms against hypoxic insult. *Brain Pathol* 2003;13:554–73
17. Lassmann H. Multiple sclerosis: is there neurodegeneration independent from inflammation? *J Neurol Sci* 2007;259:3–6
18. Lanz M, Hahn HK, Hildebrandt H. Brain atrophy and cognitive impairment in multiple sclerosis: a review. *J Neurol* 2007;254(Suppl 2):II43–48
19. Jackson A, Kassner A, Zhu XP, et al. Reproducibility of T2* blood volume and vascular tortuosity maps in cerebral gliomas. *J Magn Reson Imaging* 2001;14:510–16
20. Jackson A, Kassner A, Annesley-Williams D, et al. Abnormalities in the recirculation phase of contrast agent bolus passage in cerebral gliomas: comparison with relative blood volume and tumor grade. *AJNR Am J Neuroradiol* 2002;23:7–14
21. Kassner A, Zhu XP, Li KL, et al. Neoangiogenesis in association with Moyamoya syndrome shown by estimation of relative recirculation based on dynamic contrast-enhanced MR images. *AJNR Am J Neuroradiol* 2003;24:810–18
22. Wu S, Thornhill RE, Chen S, et al. Relative recirculation: a fast, model-free surrogate for the measurement of blood-brain barrier permeability and the prediction of hemorrhagic transformation in acute ischemic stroke. *Invest Radiol* 2009;44:662–68
23. Dade LA, Gao FQ, Kovacevic N, et al. Semiautomatic brain region extraction: a method of parcellating brain regions from structural magnetic resonance images. *Neuroimage* 2004;22:1492–502
24. Robb RA, Hanson DP, Karwowski RA, et al. Analyze: a comprehensive, operator-interactive software package for multidimensional medical image display and analysis. *Comput Med Imaging Graph* 1989;13:433–54
25. Aviv RI, Francis PL, Tenenbein R, et al. Decreased frontal lobe gray matter perfusion in cognitively impaired patients with secondary-progressive multiple sclerosis detected by the bookend technique. *AJNR Am J Neuroradiol* 2012;33:1779–85
26. Rosen BR, Belliveau JW, Vevea JM, et al. Perfusion imaging with NMR contrast agents. *Magn Reson Med* 1990;14:249–65
27. Kassner A, Annesley DJ, Zhu XP, et al. Abnormalities of the contrast re-circulation phase in cerebral tumors demonstrated using dynamic susceptibility contrast-enhanced imaging: a possible marker of vascular tortuosity. *J Magn Reson Imaging* 2000;11:103–13
28. Benedict RH, Fischer JS, Archibald CJ, et al. Minimal neuropsychological assessment of MS patients: a consensus approach. *Clin Neuropsychol* 2002;16:381–97
29. Thompson AJ, Polman CH, Miller DH, et al. Primary progressive multiple sclerosis. *Brain* 1997;120(Part 6):1085–96
30. Heaton RK, Nelson LM, Thompson DS, et al. Neuropsychological findings in relapsing-remitting and chronic-progressive multiple sclerosis. *J Consult Clin Psychol* 1985;53:103–10
31. Frischer JM, Bramow S, Dal-Bianco A, et al. The relation between inflammation and neurodegeneration in multiple sclerosis brains. *Brain* 2009;132(Part 5):1175–89
32. Benedict RH, Cookfair D, Gavett R, et al. Validity of the minimal assessment of cognitive function in multiple sclerosis (MACFIMS). *J Int Neuropsychol Soc* 2006;12:549–58
33. Drake AS, Weinstock-Guttman B, Morrow SA, et al. Psychometrics and normative data for the Multiple Sclerosis Functional Composite: replacing the PASAT with the Symbol Digit Modalities Test. *Mult Scler* 2010;16:228–37
34. Benedict RH, Weinstock-Guttman B, Fishman I, et al. Prediction of neuropsychological impairment in multiple sclerosis: comparison of conventional magnetic resonance imaging measures of atrophy and lesion burden. *Arch Neurol* 2004;61:226–30
35. Christodoulou C, Krupp LB, Liang Z, et al. Cognitive performance and MR markers of cerebral injury in cognitively impaired MS patients. *Neurology* 2003;60:1793–98
36. Lockwood AH, Linn RT, Szymanski H, et al. Mapping the neural systems that mediate the Paced Auditory Serial Addition Task (PASAT). *J Int Neuropsychol Soc* 2004;10:26–34
37. Dineen RA, Vilisaar J, Hlinka J, et al. Disconnection as a mechanism for cognitive dysfunction in multiple sclerosis. *Brain* 2009;132(Part 1):239–49
38. Zivadinov R, Bakshi R. Role of MRI in multiple sclerosis I: inflammation and lesions. *Front Biosci* 2004;9:665–83
39. Zivadinov R, Leist TP. Clinical-magnetic resonance imaging correlations in multiple sclerosis. *J Neuroimaging* 2005;15(4 Suppl):10S–21S.
40. Filippi M, Wolinsky JS, Sormani MP, et al. Enhancement frequency decreases with increasing age in relapsing-remitting multiple sclerosis. *Neurology* 2001;56:422–23
41. Silver NC, Tofts PS, Symms MR, et al. Quantitative contrast-enhanced magnetic resonance imaging to evaluate blood-brain barrier integrity in multiple sclerosis: a preliminary study. *Mult Scler* 2001;7:75–82
42. Rydahl C, Thomsen HS, Marckmann P. High prevalence of nephrogenic systemic fibrosis in chronic renal failure patients exposed to gadodiamide, a gadolinium-containing magnetic resonance contrast agent. *Invest Radiol* 2008;43:141–44
43. Cheng HL. Investigation and optimization of parameter accuracy in dynamic contrast-enhanced MRI. *J Magn Reson Imaging* 2008;28:736–43
44. Ingrisch M, Sourbron S, Morhard D, et al. Quantification of perfusion and permeability in multiple sclerosis: dynamic contrast-enhanced MRI in 3D at 3T. *Invest Radiol* 2012;47:252–58
45. O'Sullivan M, Morris RG, Huckstep B, et al. Diffusion tensor MRI correlates with executive dysfunction in patients with ischaemic leukoaraiosis. *J Neurol Neurosurg Psychiatry* 2004;75:441–47
46. Parkinson RB, Hopkins RO, Cleavinger HB, et al. White matter hyperintensities and neuropsychological outcome following carbon monoxide poisoning. *Neurology* 2002;58:1525–32
47. Kennedy MR, Wozniak JR, Muetzel RL, et al. White matter and neurocognitive changes in adults with chronic traumatic brain injury. *J Int Neuropsychol Soc* 2009;15:130–36