

Are your **MRI contrast agents** cost-effective?

Learn more about generic **Gadolinium-Based Contrast Agents**.



**FRESENIUS  
KABI**

caring for life

**AJNR**

**The Prevalence of Malformations of Cortical Development in a Pediatric Hereditary Hemorrhagic Telangiectasia Population**

G.J. Palagallo, S.R. McWilliams, L.A. Sekarski, A. Sharma, M.S. Goyal and A.J. White

This information is current as of April 18, 2024.

*AJNR Am J Neuroradiol* published online 10 November 2016

<http://www.ajnr.org/content/early/2016/11/10/ajnr.A4980>

# The Prevalence of Malformations of Cortical Development in a Pediatric Hereditary Hemorrhagic Telangiectasia Population

G.J. Palagallo, S.R. McWilliams, L.A. Sekarski, A. Sharma, M.S. Goyal, and A.J. White



## ABSTRACT

**BACKGROUND AND PURPOSE:** Brain AVM, cerebral abscess, and ischemic stroke are among the well known neurologic manifestations of hereditary hemorrhagic telangiectasia. However, recently reported data suggest an additional association with malformations of cortical development. The purpose of this study was to determine the prevalence of malformations of cortical development in a population of pediatric patients with hereditary hemorrhagic telangiectasia.

**MATERIALS AND METHODS:** A retrospective review of brain MRIs from 116 pediatric patients was performed. Each patient was referred from our institution's Hereditary Hemorrhagic Telangiectasia Clinic. Each MRI included a 3D sequence, most frequently MPRAGE. The 3D sequence was evaluated by a neuroradiology fellow, with specific attention to the presence or absence of malformations of cortical development. Positive studies were subsequently reviewed by 2 attending neuroradiologists, who rendered a final diagnosis.

**RESULTS:** Fourteen of 116 (12.1%) patients were found to have a malformation of cortical development. Among these 14, there were 12 cases of polymicrogyria and 2 cases of bifrontal periventricular nodular heterotopia.

**CONCLUSIONS:** Pediatric patients with hereditary hemorrhagic telangiectasia have a relatively high prevalence of malformations of cortical development, typically perisylvian polymicrogyria.

**ABBREVIATIONS:** HHT = hereditary hemorrhagic telangiectasia; MCD = malformation of cortical development; PMG = polymicrogyria

Hereditary hemorrhagic telangiectasia (HHT) is an autosomal dominant disorder with a geography-dependent prevalence that ranges from approximately 1/5000 to 1/8000 in Japan to 1/10,000 in the United Kingdom.<sup>1,2</sup> HHT is diagnosed clinically based on the Curacao criteria, which include: 1) spontaneous and recurrent epistaxis, 2) mucocutaneous telangiectasias, 3) visceral AVMs, and 4) a first-degree relative who has the disease. If 3 or 4 of the criteria are present, a patient is considered to have “definite” HHT. “Possible” HHT requires that 2 criteria be present, whereas patients with fewer than 2 positive criteria are considered “unlikely” to have the disease. HHT results from various mutations in genes involved in signaling in the transcription growth

factor- $\beta$  pathway in vascular endothelial cells. Known mutations include *endoglin* (*ENG*), *activin receptor-like kinase* (*ALK1*), and *SMAD4*.<sup>3–6</sup> Cerebral manifestations of HHT include brain AVMs, which are estimated to occur in 10%–20% of patients.<sup>7</sup> In addition, pulmonary AVMs are present in approximately 30% of patients with HHT. The presence of a right-to-left pulmonary shunt predisposes patients with HHT to cerebral abscess and embolic stroke.<sup>8,9</sup>

Malformations of cortical development (MCDs) encompass a broad array of disorders seen in patients with developmental delay and epilepsy. Included in this category is polymicrogyria (PMG), a term that refers to cerebral cortex that contains unusually small convolutions.<sup>10</sup> MRI features of PMG include small gyri separated by thin, shallow sulci. This often results in the appearance of a thickened cortex with irregularity of the cortical surface and gray-white junction.<sup>11</sup> Heterotopia is another MCD, resulting from abnormal neuronal migration and most commonly manifesting in a nodular periventricular form.<sup>12</sup> A variety of syndromes and genetic mutations have been shown to be associated with PMG.<sup>10,12</sup> Data reported at the 10th International Scientific HHT Conference in 2013 suggested an 8% prevalence of MCDs in the HHT population.<sup>13</sup> However, to date, there have been no publications in the scientific literature describing an association be-

Received June 22, 2016; accepted after revision August 29.

From the Mallinckrodt Institute of Radiology (G.J.P., S.R.M., A.S., M.S.G.) and Department of Pediatrics (L.A.S., A.J.W.), Washington University in St. Louis School of Medicine, St. Louis, Missouri.

M.S. Goyal and A.J. White are senior authors who contributed equally to this work.

Paper previously presented at: American Society of Neuroradiology Annual Meeting 2016, May 21–26, 2016; Washington, D.C.

Please address correspondence to Gerald J. Palagallo, MD, 366 West Point Ct, St. Louis, MO 63130; e-mail: gerald.palagallo@gmail.com

Indicates open access to non-subscribers at www.ajnr.org

<http://dx.doi.org/10.3174/ajnr.A4980>

tween MCDs and HHT. Our study aims to determine the prevalence of PMG and other MCDs in pediatric patients with HHT.

## MATERIALS AND METHODS

We identified 116 pediatric patients—referred to our institution's HHT clinic between 2005 and 2015—who underwent a brain MRI that included at least 1 high-resolution 3D sequence. At our institution, children being evaluated for HHT are routinely screened with brain MRI. In most cases, the 3D sequence was T1 MPRAGE, which is routinely performed at our institution for pediatric brain MRI. All MRI examinations were performed at either 1.5T or 3T. Each MRI was retrospectively evaluated with specific attention to the presence or absence of MCDs by a neuroradiology fellow (G.J.P.). For each case, the radiology report was consulted with attention to documentation of MCDs. Potentially positive cases were then confirmed by 2 board-certified attending neuroradiologists (M.S.G., A.S.), with 2 and 10 years of experience, respectively. For each of the 116 patients, the following information was acquired from the electronic medical record and a pediatric HHT data base: sex, age, diagnosis by Curacao criteria, genetic testing (if available), and the presence or absence of pulmonary and brain AVMs. For each patient who screened

positive, the medical record was reviewed to document history of neurologic symptoms with particular attention to the presence or absence of epilepsy. Descriptive statistics were computed, and associations were tested with the Fisher exact test. The criterion for statistical significance was  $P < .05$ .

## RESULTS

Demographic information, genetic mutation status, and other clinical data for the 116 patients are detailed in Table 1. Because our institution is an HHT Center of Excellence for adults and children, most patients included in our pediatric HHT data base are the children of adults with known HHT, thus accounting for the higher proportion of children meeting Curacao criteria for definite HHT. Fourteen of 116 (12.1%) patients were found to have an MCD (Table 2). The positive studies included 12 cases of PMG (12/116, 10.3%) and 2 cases of bifrontal periventricular nodular heterotopia (2/116, 1.7%). Two sets of siblings were positive for MCD. This included a set of 3 boys, 2 of whom had perisylvian PMG, with the other sibling having periventricular nodular heterotopia (Fig 1). An additional set of 2 sisters each had perisylvian PMG, but in opposite cerebral hemispheres. The siblings of 2 other positive cases were negative for MCD.

PMG was seen unilaterally in all 12 instances. Multifocal PMG was seen in 4/12 cases. In 1 case, PMG was seen adjacent to a previously resected AVM. In 2 patients, focal PMG was seen immediately adjacent to a small AVM (Fig 2). In another case, PMG was noted to line a large porencephalic cyst. Clinically, this patient had both epilepsy and hemiplegia and was the only patient to exhibit either of those manifestations among the cases of MCD. Additional neurologic symptoms included 6 patients with headaches, 1 with a gait disorder, and 1 with a prior stroke (Table 2).

AVMs were seen more frequently in patients with MCD compared with those without MCD. Eight of 13 (61.5%) patients with MCD who underwent testing had a pulmonary AVM; 30/100 (30.0%) of patients without MCD who underwent testing had a pulmonary AVM ( $P = .029$ ). Five of 14 (35.7%) patients with MCD also had a brain AVM, compared with 13/102 (12.7%) patients without MCD ( $P = .042$ ).

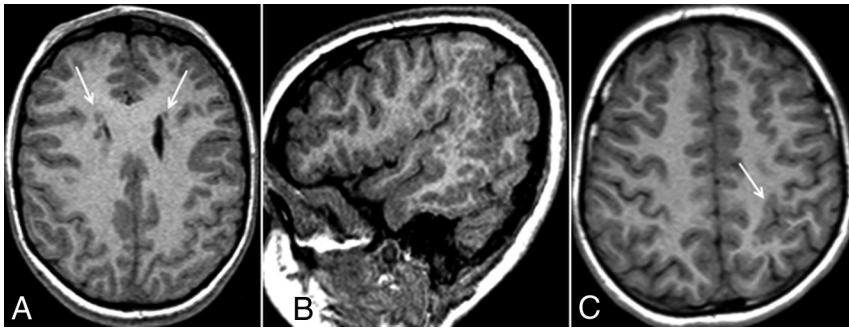
**Table 1: Summary of 116 patients**

Characteristic	Summary
Demographics, no. (%)	
Female sex	63/116 (54.3)
Age (yr)	9.2 ± 4.4
HHT-causing mutation, no. (%)	
<i>Endoglin</i>	31/46 (67.4)
<i>ALK1</i>	10/46 (21.7)
<i>SMAD4</i>	1/46 (2.2)
All tests negative	4/46 (8.7)
Vascular malformations, no. (%)	
Brain AVM	18/116 (15.5)
Pulmonary AVM	38/113 (33.6)
Curacao criteria, no. (%)	
Definite	78/116 (67.2)
Possible or suspected	34/116 (29.3)
Unlikely	4/116 (3.4)

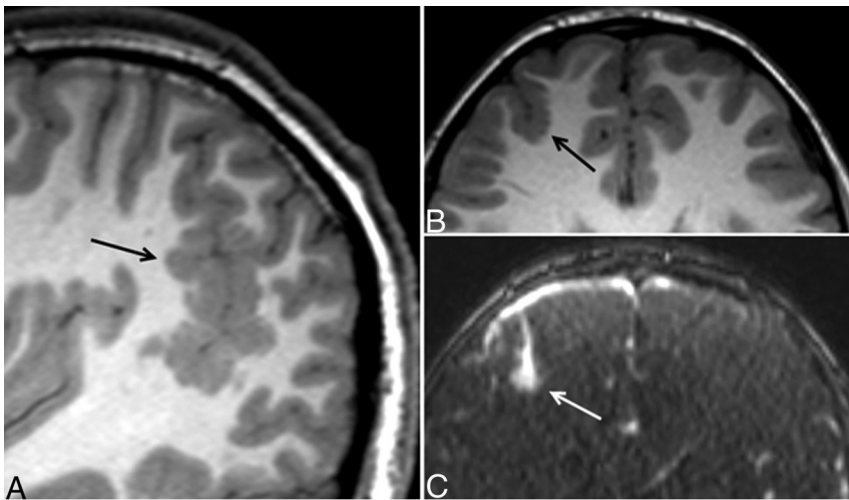
**Table 2: Description of 14 patients with MCD**

Patient	Age	Sex	Curacao	Genetics	Family Genetics	Pulmonary AVM	Brain AVM	Neurologic History	MCD
A	8 yr	F	4	<i>ENG</i>	<i>ENG</i>	Y	Y	Headache	L perisylvian PMG
B	3 yr	M	3		<i>ENG</i>	Y	N		1) L perisylvian PMG, 2) L inferior temporal PMG
C	3 yr	F	4		Ind	Y	Y	Headache	L perisylvian PMG
D	7 yr	F	4			Y	N	Headache	1) R perisylvian PMG, 2) R parietal PMG
E	8 yr	F	4			Y	N	Headache	L temporal PMG
F	3 mo	F	2	<i>ENG</i>	<i>ENG</i>	N	N	Gait disorder	R perisylvian PMG
G	5 yr	F	4	<i>ENG</i>	<i>ENG</i>	Y	Y	Stroke	L perisylvian PMG along margin of AVM resection cavity
H	9 yr	M	3			N	N	Headache	Bifrontal periventricular nodular heterotopia
I	11 yr	M	3			N	N		L parietal PMG
J	12 yr	M	4			Ind	N		L perisylvian PMG
K	11 yr	M	2		<i>ENG</i>	N	Y	Headache	1) R parietotemporal PMG, 2) R frontal PMG adjacent to AVM
L	15 yr	F	2		<i>SMAD4</i>	N	N		Bifrontal periventricular nodular heterotopia
M	8 yr	M	4			Y	Y		1) R frontal PMG adjacent to small AVM, 2) R mesial temporal PMG
N	7 yr	F	4			Y	N	Hemiplegia, epilepsy	L frontal PMG adjacent to large porencephalic cyst

**Note:**—Ind indicates indeterminate; L, left; R, right.



**FIG 1.** Three siblings with HHT and malformations of cortical development. Axial T1 MPRAGE demonstrates bilateral periventricular nodular heterotopia (A, arrows) in a 9-year-old boy. Sagittal T1 MPRAGE demonstrates extensive perisylvian PMG (B) in a 12-year-old boy. Axial T1 MPRAGE demonstrates thickened and excessively convoluted cortex in the left posterior frontoparietal region (C, arrow), consistent with PMG.



**FIG 2.** Eleven-year-old boy with unilateral, multifocal PMG and an AVM. Sagittal T1 MPRAGE shows extensive PMG in the right parietotemporal region (A, arrow). An additional, smaller focus of PMG is seen in the right frontal lobe (B, arrow). Immediately adjacent to the right frontal PMG, postcontrast MRA demonstrates a small enhancing nidus (C, arrow) with cortical venous drainage, consistent with an AVM.

## DISCUSSION

This study demonstrated a relatively high prevalence (12.1%) of MCD within a pediatric HHT population, consistent with the results reported in the conference abstract by Bergerot et al<sup>13</sup> in 2013. Most cases of MCD were PMG, seen predominantly in a perisylvian distribution, which is the most common location for PMG in general.<sup>14</sup> The prevalence of PMG in the general population is unknown, but is likely quite rare. Large series of brain MRIs of healthy, asymptomatic patients reported no cases of PMG.<sup>15,16</sup> A study looking at incidental brain MRI findings in 120 healthy Japanese children, which included MPRAGE sequences, also reported no cases of PMG.<sup>17</sup> Many possible causes for PMG have been identified, including various in utero neurologic insults. Prenatal infection with cytomegalovirus has been associated with the development of PMG.<sup>18</sup> In utero ischemic insults have also been implicated as a cause of both layered and unlayered PMG.<sup>19</sup> PMG has been described in association with several genetic mutations and metabolic diseases.<sup>10,12</sup>

Although the cause for MCD in HHT is unclear, the distribution of PMG in our cases supports a regional rather than global

pathogenesis. Twelve of 12 cases were unilateral, which is notable for the fact that a prior series of 71 cases of PMG showed unilaterality in only 42% of cases.<sup>14</sup> In another series of 328 patients with PMG, the unilateral perisylvian pattern was seen only 9% of the time.<sup>20</sup> The genetic basis for HHT is abnormal vascular development related to various mutations in the transcription growth factor- $\beta$  pathway. Three of our cases provide circumstantial support of abnormal vascular development being associated with PMG by virtue of spatial proximity. This includes 2 cases of a small AVM directly adjacent to focal PMG and another case with PMG lining an AVM resection cavity.

Notably, the prevalence of both brain AVMs and pulmonary AVMs was significantly higher in our patients with MCD compared with those without MCD. In 1 of our cases, PMG was seen adjacent to a porencephalic cyst, an association that has been described previously and attributed to prenatal ischemia.<sup>21</sup> The pathogenesis of brain AVMs and vascular dysplasia has been recently investigated in mouse models of HHT. Given the results of our study, it would be informative to investigate for cortical malformations in these mouse models.

Genetic testing was not available for most of our cases, but at least 5 of 12 cases with PMG were very likely in patients with *ENG* mutations. *Endoglin* mRNA expression peaks throughout the brain during the latter half of gestation

and the perinatal period and, in the brain, spatiotemporally correlates with the expression of other genes involved with transcription growth factor- $\beta$ -mediated angiogenesis, such as *ALK1*, another gene implicated in HHT.<sup>22</sup>

The clinical manifestations of PMG are widely variable, including developmental delay, cognitive abnormalities, and epilepsy. The incidence of epilepsy in the setting of PMG has been reported to be as high as 78%.<sup>20</sup> However, in our study, only 1 patient, who had a large porencephalic cyst in the left cerebral hemisphere, had documented epilepsy. A review of 87 patients with PMG and epilepsy found that a more extensive distribution of PMG correlated with an earlier age of seizure onset.<sup>23</sup> More favorable clinical outcomes are seen when PMG is unilateral, localized, and not associated with other structural malformations.<sup>10</sup> Our findings suggest that PMG in the HHT population may be subclinical, possibly because of its unilaterality and lack of association with other major structural abnormalities. Nevertheless, it is likely prudent to consider the possibility of PMG as a cause for seizures in patients with HHT and



epilepsy, in addition to the more well-known causes such as brain AVM, abscess, and infarct.

Our study is limited by its retrospective nature and variability in MR imaging protocols that may alter the sensitivity for cortical malformations or brain AVMs. At present, PMG is likely underdiagnosed in the HHT population, as evidenced by the fact that several of the cases with PMG were only identified in this retrospective review. Our results suggest that a high spatial resolution sequence in brain MRIs performed for HHT evaluation may be useful.

## CONCLUSIONS

In summary, our study confirms a high prevalence of MCDs in the pediatric HHT population, particularly perisylvian PMG. Our data suggest that PMG in this setting is typically subclinical, but can be associated with epilepsy and often coexists with other manifestations of HHT. Moreover, though the underlying pathogenesis of MCDs in HHT remains unknown, our findings suggest an association between vascular anomalies and PMG.

Disclosures: Manu Goyal—UNRELATED: Grants/Grants Pending: ASNR/RSNA Scholar Grant,\* McDonnell Center for Systems Neuroscience,\* Comments: Scholar Grant 2015–2017, McDonnell Center Grant to obtain lifespan MRA data. \*Money paid to the institution.

## REFERENCES

1. Dakeishi M, Shioya T, Wada Y, et al. **Genetic epidemiology of hereditary hemorrhagic telangiectasia in a local community in the northern part of Japan.** *Hum Mutat* 2002;19:140–48 CrossRef Medline
2. Donaldson JW, McKeever TM, Hall IP, et al. **The UK prevalence of hereditary haemorrhagic telangiectasia and its association with sex, socioeconomic status and region of residence: a population-based study.** *Thorax* 2014;69:161–67 CrossRef Medline
3. McAllister KA, Grogg KM, Johnson DW, et al. **Endoglin, a TGF-beta binding protein of endothelial cells, is the gene for hereditary haemorrhagic telangiectasia type 1.** *Nat Genet* 1994;8:345–51 CrossRef Medline
4. Johnson DW, Berg JN, Baldwin MA, et al. **Mutations in the activin receptor-like kinase 1 gene in hereditary haemorrhagic telangiectasia type 2.** *Nat Genet* 1996;13:189–95 CrossRef Medline
5. Gallione CJ, Repetto GM, Legius E, et al. **A combined syndrome of juvenile polyposis and hereditary haemorrhagic telangiectasia associated with mutations in MADH4 (SMAD4).** *Lancet* 2004;363:852–59 CrossRef Medline
6. Govani FS, Shovlin CL. **Hereditary haemorrhagic telangiectasia: a clinical and scientific review.** *Eur J Hum Genet* 2009;17:860–71 CrossRef Medline
7. Fulbright RK, Chaloupka JC, Putman CM, et al. **MR of hereditary hemorrhagic telangiectasia: prevalence and spectrum of cerebrovascular malformations.** *AJNR Am J Neuroradiol* 1998;19:477–84 Medline
8. Kjeldsen AD, Tørring PM, Nissen H, et al. **Cerebral abscesses among Danish patients with hereditary haemorrhagic telangiectasia.** *Acta Neurol Scand* 2014;129:192–97 CrossRef Medline
9. Angriman F, Ferreyro BL, Wainstein EJ, et al. **Pulmonary arteriovenous malformations and embolic complications in patients with hereditary hemorrhagic telangiectasia.** *Arch Bronconeumol* 2014;50:301–04 CrossRef Medline
10. Guerrini R, Dobyns WB. **Malformations of cortical development: clinical features and genetic causes.** *Lancet Neurol* 2014;13:710–26 CrossRef Medline
11. Barkovich AJ. **MRI analysis of sulcation morphology in polymicrogyria.** *Epilepsia* 2010;51:17–22 CrossRef Medline
12. Barkovich AJ, Guerrini R, Kuzniecky RI, et al. **A developmental and genetic classification for malformations of cortical development: update 2012.** *Brain* 2012;135:1348–69 CrossRef Medline
13. Bergerot JF, Dupuis-Girod S, Berthezene Y, et al. **Malformations of cortical development and brain vessels in patients with hereditary haemorrhagic telangiectasia.** In: *10th International Hereditary Hemorrhagic Telangiectasia Scientific Conference*, Cork, Ireland. June 12–15, 2013
14. Hayashi N, Tsutsumi Y, Barkovich AJ. **Polymicrogyria without porencephaly/schizencephaly. MRI analysis of the spectrum and the prevalence of macroscopic findings in the clinical population.** *Neuroradiology* 2002;44:647–55 CrossRef Medline
15. Katzman GL, Dagher AP, Patronas NJ. **Incidental findings on brain magnetic resonance imaging from 1000 asymptomatic volunteers.** *JAMA* 1999;282:36–39 CrossRef Medline
16. Weber F, Knopf H. **Incidental findings in magnetic resonance imaging of the brains of healthy young men.** *J Neurol Sci* 2006;240:81–84 CrossRef Medline
17. Seki A, Uchiyama H, Fukushi T, et al. **Incidental findings of brain magnetic resonance imaging study in a pediatric cohort in Japan and recommendation for a model management protocol.** *J Epidemiol* 2010;20(suppl 2):S498–504 CrossRef Medline
18. Barkovich AJ, Lindan CE. **Congenital cytomegalovirus infection of the brain: imaging analysis and embryologic considerations.** *AJNR Am J Neuroradiol* 1994;15:703–15 Medline
19. Barkovich AJ, Rowley H, Bollen A. **Correlation of prenatal events with the development of polymicrogyria.** *AJNR Am J Neuroradiol* 1995;16:822–27 Medline
20. Leventer RJ, Jansen A, Pilz DT, et al. **Clinical and imaging heterogeneity of polymicrogyria: a study of 328 patients.** *Brain* 2010;133:1415–27 CrossRef Medline
21. Levine DN, Fisher MA, Caviness VS Jr. **Porencephaly with microgyria: a pathologic study.** *Acta Neuropathol* 1974;29:99–113 CrossRef Medline
22. © 2015 Allen Institute for Brain Science. BrainSpan Atlas of the Developing Human Brain [Internet]. Available from: <http://brainspan.org>. Accessed April 1, 2016
23. Shain C, Ramgopal S, Fallil Z, et al. **Polymicrogyria-associated epilepsy: a multicenter phenotypic study from the Epilepsy Phenome/Genome Project.** *Epilepsia* 2013;54:1368–75 CrossRef Medline