

Are your MRI contrast agents cost-effective?

Learn more about generic Gadolinium-Based Contrast Agents.



FRESENIUS
KABI

caring for life

AJNR

Reply:

J.M. George, S. Fiori, J. Fripp, K. Pannek, J. Bursle, R.X. Moldrich, A. Guzzetta, A. Coulthard, R.S. Ware, S.E. Rose, P.B. Colditz and R.N. Boyd

AJNR Am J Neuroradiol published online 23 November 2017

<http://www.ajnr.org/content/early/2017/11/28/ajnr.A5478.1>

This information is current as of April 18, 2024.

REPLY:

We thank Professors Linda de Vries and Frances Cowan for their interest in our recent publication, “Validation of an MRI Brain Injury and Growth Scoring System in Very Preterm Infants Scanned at 29- to 35-Week Postmenstrual Age.”¹ In their correspondence, the authors expressed concern about our example presented in On-line Fig 2, which they said we presented as “grade 2 white matter injury (WMI).” They correctly pointed out that the example shows connatal cysts and not cystic periventricular leukomalacia (PVL), an observation with which we entirely agree. They were concerned that connatal cysts are “still being misinterpreted as cystic WMI.”

We would like to confirm that nowhere in our publication or on-line material have we called this example in On-line Fig 2, WMI. We have not labeled it cystic PVL or inferred that in the text or on-line material. The exact descriptions in the text are “white matter abnormality,” “cystic degeneration,” or “cystic lesion.” In On-line Tables 1 and 2, this scoring category is called “cerebral WM, cystic lesion.” The scoring system was descriptive and not interpretive—that is, if a cyst was observed, then it was scored without interpretation of the pathogenesis or etiology. This descriptive approach was undertaken to improve the reproducibility of the scoring system, especially in cases in which the pathogenesis or etiology of a lesion was unclear. We agree that it is of paramount importance that clinicians do not interpret our example as cystic PVL; thus, we have amended the caption of On-line Fig 2 to “Bilateral connatal cysts, classified as cerebral WM, cystic lesion, focal bilateral, score 2 (axial T2)” to ensure the utmost clarity.

The authors also commented on On-line Figs 11, 12, and 14, in which they suggest that “germinal matrix hemorrhages are scored as deep gray matter injury.” We agree that germinal matrix hemorrhages are evident in these images; however, from the available images, we think that a secondary involvement of the deep GM (head of caudate) is very likely and, in any case, cannot be excluded, hence our scoring of the images of these subjects as focal bilateral deep GM signal abnormality. An additional coronal image that relates to On-line Fig 12 is included here as On-line Fig 12B, to demonstrate caudothalamic groove germinal matrix hemorrhages, in which extension into the adjacent caudate head is likely. The deep GM subscale score demonstrated strong associations with both motor and cognitive outcomes in our article.

We include 2 additional images from the same subject used in On-line Fig 7, to clarify the involvement of WM in addition to the germinal matrix hemorrhage in this case. We believe that signal abnormality from the additional T1 images supplied, despite the low quality, can support the presence of linear hyperintensity involving the white matter next to the more evident germinal matrix hemorrhage, along with a slightly enlarged ventricle.

We are not presenting this scoring system as a diagnostic tool but rather as an assessment in which our methodology has demonstrated predictive validity. Compared with MR imaging at term-equivalent age in preterm infants, certain features are specific to the earlier imaging time point, such as hemorrhagic lesions, which present unique challenges to scoring. Our choice of

being very sensitive in our scoring may have led to a tendency to overestimate germinal matrix hemorrhages populating part of the putamen and caudate, for example. We believe this is better than the alternative of potentially underestimating the impact of germinal matrix hemorrhages on adjacent tissue structures. We think that our approach is sensitive and descriptive in a new and challenging area and an important first step in developing robust and validated MR imaging scoring tools for use in this population.

REFERENCE

1. George JM, Fiori S, Fripp J, et al. **Validation of an MRI brain injury and growth scoring system in very preterm infants scanned at 29- to 35-week postmenstrual age.** *AJNR Am J Neuroradiol* 2017;38:1435–42 CrossRef Medline

J.M. George

Queensland Cerebral Palsy and Rehabilitation Research Centre
Centre for Children's Health Research
Faculty of Medicine, University of Queensland
Brisbane, Australia

S. Fiori

Department of Developmental Neuroscience
Stella Maris Scientific Institute
Pisa, Italy

J. Fripp

K. Pannek

Health and Biosecurity
The Australian e-Health Research Centre
Commonwealth Scientific and Industrial Research Organisation
Brisbane, Australia

J. Bursle

Department of Medical Imaging
Royal Brisbane and Women's Hospital
Brisbane, Australia

R.X. Moldrich

Centre for Clinical Research
Faculty of Medicine, University of Queensland
Brisbane, Australia

A. Guzzetta

Department of Developmental Neuroscience
Stella Maris Scientific Institute
Pisa, Italy

A. Coulthard

Department of Medical Imaging
Royal Brisbane and Women's Hospital
Brisbane, Australia

Discipline of Medical Imaging

University of Queensland

Brisbane, Australia

R.S. Ware

Menzies Health Institute Queensland
Griffith University
Brisbane, Australia
Queensland Centre for Intellectual and Developmental Disability
University of Queensland
Brisbane, Australia

S.E. Rose

Health and Biosecurity
The Australian e-Health Research Centre
Commonwealth Scientific and Industrial Research Organisation
Brisbane, Australia

P.B. Colditz

Centre for Clinical Research
Faculty of Medicine, University of Queensland
Brisbane, Australia

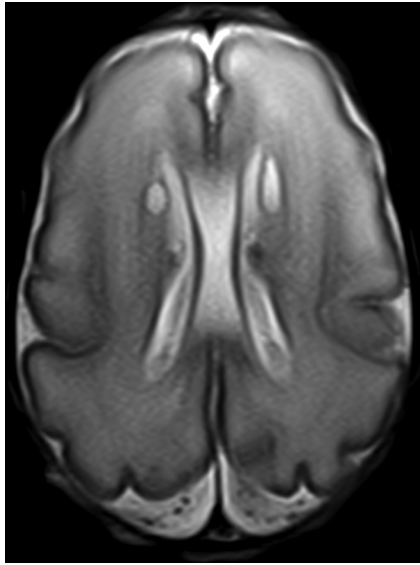
Perinatal Research Centre

Royal Brisbane and Women's Hospital

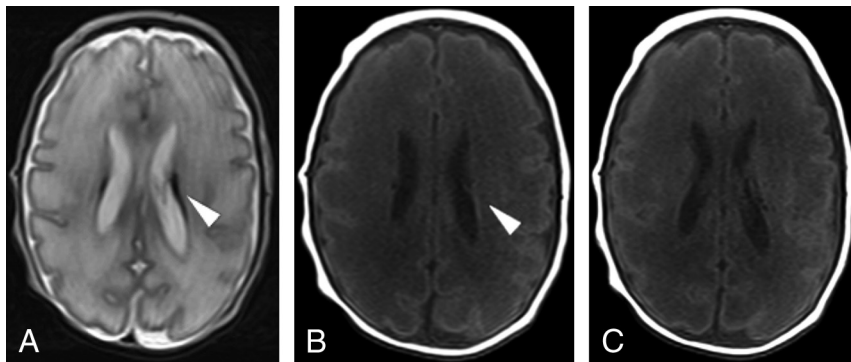
Brisbane, Australia

R.N. Boyd

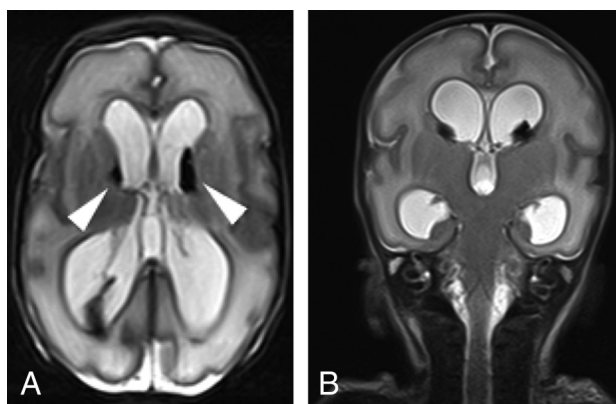
Queensland Cerebral Palsy and Rehabilitation Research Centre
Centre for Children's Health Research
Faculty of Medicine, University of Queensland
Brisbane, Australia



ON-LINE FIG 2. Existing On-Line Fig 2 with the amended caption as per our recent erratum. New caption: On-line Fig 2. Bilateral connatal cysts, classified as cerebral WM, cystic lesion, focal bilateral, score 2 (axial T2).



ON-LINE FIG 7. Existing On-Line Fig 7, labeled as 7A and new Fig 7B, -C. New caption: On-Line Fig 7. Images from the same subject to illustrate linear T1 hyperintense signal abnormality in the periventricular WM (B, *arrowhead*), deep to the T2 hypointense germinal matrix hemorrhage (A, *arrowhead*), classified as cerebral WM, focal signal abnormality, linear, score 3.



ON-LINE FIG 12. Existing On-Line Fig 12, labeled 12A and new Fig 12B. New caption: On-Line Fig 12. Images from the same subject that demonstrate caudothalamic groove germinal matrix hemorrhages, in which extension into the adjacent caudate head is likely, classified as deep GM, signal abnormality, focal bilateral, score 2.