

Are your **MRI contrast agents** cost-effective?

Learn more about generic **Gadolinium-Based Contrast Agents**.



**AJNR**

**Cerebrovascular Manifestations of  
Neurosarcoidosis: An Underrecognized  
Aspect of the Imaging Spectrum**

G. Bathla, P. Watal, S. Gupta, P. Nagpal, S. Mohan and T. Moritani

This information is current as  
of April 23, 2024.

*AJNR Am J Neuroradiol* published online 28 December  
2017

<http://www.ajnr.org/content/early/2017/12/28/ajnr.A5492>

# Cerebrovascular Manifestations of Neurosarcoidosis: An Underrecognized Aspect of the Imaging Spectrum

 G. Bathla,  P. Watal,  S. Gupta,  P. Nagpal,  S. Mohan, and  T. Moritani



## ABSTRACT

**SUMMARY:** Involvement of the central nervous system by sarcoidosis, also referred to as neurosarcoidosis, is seen clinically in about 5% of patients with systemic disease. CNS involvement most frequently affects the leptomeninges and cranial nerves, though the ventricular system, brain parenchyma, and pachymeninges may also be involved. Even though the involvement of the intracranial vascular structures is well-known on postmortem studies, there is scant literature on imaging manifestations secondary to the vessel wall involvement, being confined mostly to isolated case reports and small series. The authors present a review of various cerebrovascular manifestations of neurosarcoidosis, along with a brief synopsis of the existing literature.

**ABBREVIATIONS:** ICH = intracerebral hemorrhage; NS = neurosarcoidosis

Sarcoidosis is a noninfectious, idiopathic, inflammatory disorder that most frequently involves the lungs, skin, and lymph nodes.<sup>1</sup> It is more common in African Americans and patients with Scandinavian ancestry and is characterized pathologically by formation of noncaseating granulomas.<sup>1</sup> CNS imaging findings in neurosarcoidosis (NS) are seen in about 10% of patients with systemic sarcoidosis. This is less than the incidence of CNS involvement on postmortem studies (15%–25%), but more than the incidence of symptomatic CNS involvement (approximately 5%), implying that most patients with NS remain asymptomatic.<sup>1–4</sup>

Common imaging manifestations of NS include meningitis, parenchymal granulomas, white matter signal abnormalities, ventriculitis, hydrocephalus, and spinal involvement.<sup>1,5</sup> These have been previously well-described.<sup>1,6</sup> However, patients with NS may rarely present with cerebrovascular manifestations such as hemorrhage and stroke. These are thought to result from involvement of the arterial and venous structures and are only sporadically described in the literature, mostly through case reports and small case series. Although rare, these are of considerable importance, given the associated morbidity and mortality. Herein, the authors present a review of the existing literature on

the pathophysiology, pathology, and imaging findings of cerebrovascular manifestations of NS.

## Evolution and Pathogenesis


The pathogenesis of sarcoidosis remains elusive, though it is generally believed that it represents an exaggerated response by a genetically predisposed individual to a specific-yet-unidentified antigen, which may be environmental or occupational.<sup>1</sup> The scattered reports of occurrence of clusters of sarcoidosis (or sarcoid-like disease) in different population groups (health care workers, teachers, automobile manufacturers), including more recently in the firefighters exposed to World Trade Center “dust” during the collapse, again support some role for antigenic exposure.<sup>7</sup>

The offending antigens are likely airborne, which would explain the high incidence of lung involvement in sarcoidosis. Postmortem studies by Iwai et al<sup>8</sup> demonstrated granulomatous dissemination by hematogenous and lymphatic routes as well as through local extension in the heart and lung. In the brain however, perivascular and vessel wall granulomas were the dominant feature.<sup>8–11</sup> CNS involvement in systemic sarcoidosis is therefore presumably hematogenous, given the preferential perivascular distribution and paucity of a well-defined intracranial lymphatic system.

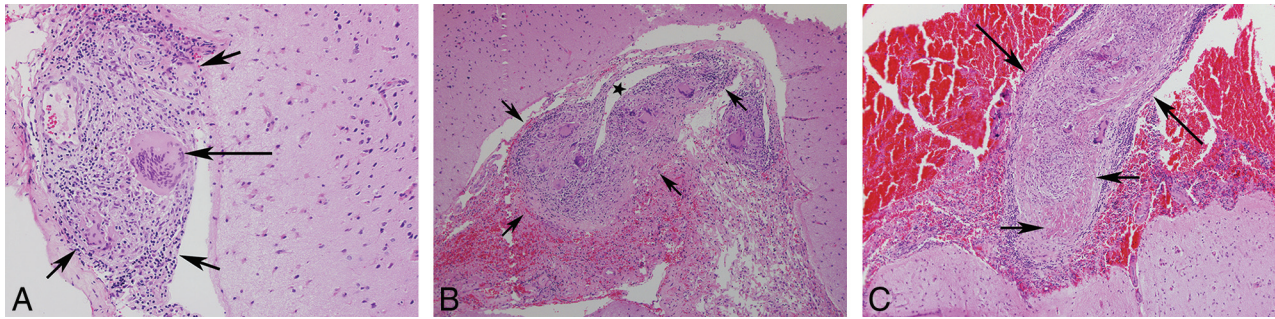
Besides the vascular involvement, postmortem studies have also documented prominent granulomatous involvement of the perivascular connective tissue, especially along the basal meninges, brain sulci, and the deep brain substance.<sup>8,12–14</sup> The involvement of the deep gray nuclei likely results from extension along the lenticulostriate perforators or Virchow-Robin spaces.<sup>5,14,15</sup> Over the cerebral convexities, the inflammation

From the Division of Neuroradiology (G.B., P.W., P.N., T.M.), Department of Radiology, and Department of Pathology (S.G.), University of Iowa Hospitals and Clinics, Iowa City, Iowa; and Division of Neuroradiology (S.M.), Department of Radiology, University of Pennsylvania, Philadelphia, Pennsylvania.

Please address correspondence to Girish Bathla, FRCR, MMed, 3960 JPP, Department of Radiology, University of Iowa Hospitals and Clinics, 200 Hawkins Dr, Iowa City, IA 52246; e-mail: girish-bathla@uiowa.edu

 Indicates open access to non-subscribers at [www.ajnr.org](http://www.ajnr.org)

<http://dx.doi.org/10.3174/ajnr.A5492>



**FIG 1.** Brain biopsies from different patients showing typical sarcoid granuloma (*short arrows*) with a Langerhans-type giant cell (*long arrow*) (H&E, original magnification  $\times 20$ ) (A), transmural granulomatous involvement of a meningeal vessel (*short arrows*, *star* represents the residual vessel lumen) (H&E, original magnification  $\times 20$ ) (B), and granulomatous vessel wall involvement (*long arrows*) with fibrinoid necrosis (*short arrows*) (H&E, original magnification  $\times 10$ ) (C).

again likely extends along the Virchow-Robin spaces into the cortex.

Although both arterial and venous involvement may be seen histopathologically, for unclear reasons, small arterial perforators are most frequently affected,<sup>12,14</sup> while large-vessel involvement is the least common. Granulomatous phlebitis, on the contrary, most commonly involves the paraventricular veins along the lateral and third ventricles.<sup>12,14</sup>

Even though the pathophysiology remains unclear, the vascular effects are unlikely to be purely secondary to vessel wall infiltration. Some studies have previously demonstrated significantly increased CNS endothelial immunoglobulin G binding in patients with NS.<sup>16</sup> Similarly, patients with sarcoidosis have also been shown to have impaired endothelial function and elevated arterial stiffness, which tends to parallel disease activity.<sup>17</sup> Additionally, elevated levels of endothelin-1, a compound with a strong mitogenic potential for smooth-muscle cells and fibroblasts, have been noted during active disease.<sup>18</sup> Finally, recent studies have also noted widespread endothelial damage in patients with sarcoidosis, even in the absence of granuloma formation.<sup>19</sup> Quite possibly, the cerebrovascular manifestations of NS are multifactorial.

Vascular involvement may result in cerebral ischemia or parenchymal or subarachnoid hemorrhage. Involvement of the larger venous sinuses has been reported, manifesting as sinus thrombosis with or without parenchymal hemorrhage. Involvement of the bigger arterial vessels may result in large or even recurrent strokes. For unclear reasons, the latter is exceptionally rare. Most interesting, the entire circumference of a large vessel is rarely involved by the granulomatous inflammation on postmortem examination, unlike smaller vessels where the inflammation is more likely to be circumferential and transmural.<sup>13</sup>

### Histopathology

The histopathologic understanding of sarcoidosis has evolved with time. The classic description of a sarcoid granuloma recognizes the characteristic morphology as discrete, compact, epithelioid cell granulomas with minimal or no necrosis (Fig 1). Although the presence of fibrinoid necrosis was reported in isolated postmortem studies, the use of the term “necrotizing sarcoid granulomatosis” as a diagnostic entity was only introduced in the pathology literature in 1973 by Liebow.<sup>20</sup> Across time, these 2 relatively distinct morphologies have been thought to represent

the 2 ends of a histopathologic continuum. Some authors now advocate the use of the term “sarcoidosis with necrotizing sarcoid granulomatosis pattern” to describe the variable extent of necrosis, instead of “necrotizing sarcoid granulomatosis.”<sup>21</sup>

Another distinctive histopathologic feature is granulomatous vasculitis/angiitis, characterized by infiltration of the vessel by the epithelioid cell granulomas. Although it was previously considered to be more common in the CNS, recent studies show that extra-CNS granulomatous vasculitis also occurs with equal frequency, though the extent of involvement may be variable.<sup>21</sup> Vascular infiltration may result in destruction of a part of the wall by intramural or transmural granulomas or result in compressive obliteration without destruction. The third and less frequently described pattern consists of vessel wall destruction by infiltrate of lymphocytes, plasma cells, and histiocytes without discrete granulomas.<sup>22</sup> When fibrinoid necrosis is present, the lesions can closely mimic the picture seen in polyarteritis nodosa, though unlike polyarteritis nodosa, the findings may be confined to the CNS. Although there are no distinct clinical or imaging subtypes of patients with necrotizing sarcoid granulomatosis and fibrinoid necrosis, isolated case reports with postmortem correlation do seem to suggest that the conditions of these patients may follow a more aggressive course.<sup>9,14,23</sup>

### Role of Imaging

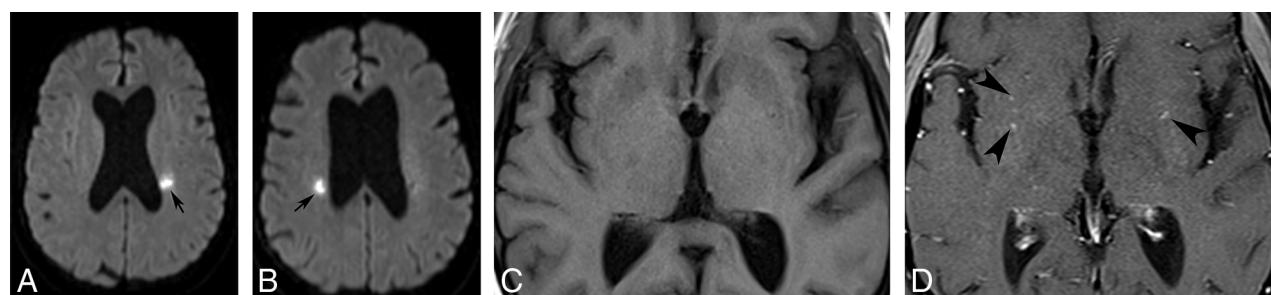
Traditionally, conventional angiography is considered the criterion standard for imaging vasculitis. However, because NS often involves the smaller perforating vessels and veins, it may not be well-evaluated.<sup>12,15,24</sup> The utility of conventional angiography in patients with NS may therefore be limited to cases with large-vessel involvement. MR imaging, on the other hand, often plays a leading role. Although MR imaging does not directly depict small vessels, the superior ability to identify small infarcts and microhemorrhages not only increases the sensitivity for underlying vasculitis but also gives it a distinct advantage over CT. Additionally, noninvasive MR imaging (or CT) angiography and venography can often provide sufficient information about larger vessels to preclude invasive angiography. Given the rarity of large-vessel involvement and the inherent risks of invasive angiography, contrast-enhanced MR imaging and MR angiography are likely to remain the preferred imaging tests for suspecting and diagnosing cerebrovascular involvement in NS. Although CTA has the slight advantage of superior spatial resolution, given the low incidence

**Table 1: Cases of NS with stroke in the reported English language literature<sup>a</sup>**

Author	Year	Age (yr)/Sex	Zajicek Criteria	CT/MRI	DWI	TIA	Stroke	Systemic Disease
Brown et al <sup>12</sup>	1989	25/M	Probable	Y/NS	NS	Y	Left IC and corona radiata	Y
Corse and Stern <sup>26</sup>	1990	38/M	Probable	Y/Y	NS	Y	Right IC	Y
Michotte et al <sup>4</sup>	1991	29/M	Probable	Y/Y	NS	N	Left BG, right frontal	Y
Zadra et al <sup>24</sup>	1996	30/M	Probable	Y/Y	NS	N	Multiple, anterior circulation	Y
Das et al <sup>30</sup>	1998	27/F	Probable	Y/NS	NS	N	Left MCA infarct	Y
Brisman et al <sup>3</sup>	2006	41/M	Probable	NS/Y	Y	N	Multiple, anterior circulation	Y
Hodge et al <sup>2</sup>	2007	36/F	Definite	NS/Y	Y	N	Left BG	N
Navi and DeAngelis <sup>31</sup>	2009	35/M	Definite	NS/Y	N	N	Pons	Y
Navi and DeAngelis <sup>31</sup>	2009	46/F	Definite	Y/Y	NS	N	Pons	Y
González-Aramburu et al <sup>15</sup>	2012	27/M	Probable	Y/Y	Y	Y	Right IC and thalamus	Y
Campbell et al <sup>32</sup>	2015	26/M	Probable	Y/Y	Y	Y	Left centrum semiovale	Y
Raza and Schreck <sup>25</sup>	2017	73/F	Probable	NS/Y	NS	N	Recurrent left MCA strokes	Y
Macedo et al <sup>5</sup>	2016	62/M	Possible	Y/Y	Y	Y	Multiple, anterior/posterior circulation	Y

**Note:**—BG indicates basal ganglia; IC, internal capsule; N, no; NS, not specified; Y, yes.

<sup>a</sup> On the basis of the Zajicek criteria,<sup>1</sup> cases may be definite (neural tissue biopsy), probable (presence of CNS inflammation with evidence of systemic disease), or possible (clinical presentation consistent with NS with exclusion of alternate diagnosis).



**FIG 2.** Axial DWIs at the level of the corona radiata obtained at 2 different time points (A and B) show recurrent periventricular infarcts. Axial magnified pre- (C) and postcontrast (D) images reveal subtle perivascular enhancement involving the bilateral basal ganglia (arrowheads, D).

of large-vessel vasculitis, it is unclear whether it adds any substantial value over MRA, which can be combined with an MR imaging study in a single session.

### Ischemic Lesions

Ischemic insults in NS are intriguingly rare, despite the frequent granulomatous vascular infiltration on postmortem studies.<sup>3,4,12,15,25</sup> The exact mechanism of infarction is likely multifactorial, resulting from a combination of small-vessel vasculitis, large-vessel inflammation, or cardioembolic phenomenon secondary to sarcoid cardiomyopathy.<sup>2,26</sup> Because perforating arteries are most frequently involved, the infarcts are often small and commonly involve the basal ganglia, thalamus, and brain stem, though large-vessel and recurrent infarcts may also occur.<sup>25</sup>

In the pre-CT era, most of the infarcts were diagnosed on postmortem studies. Commonly, these did not have a documented antemortem presentation.<sup>14,23,27-29</sup> It is unclear whether the infarcts were clinically silent due to their small size or were overshadowed by the clinical manifestations of meningism, neurologic deficits, and hydrocephalus known to accompany NS. These predominantly involved the distribution of perforating arteries. Most of the described patients were young and male and had concurrent extracranial sarcoidosis.

At times, the ischemic insults in NS may be symptomatic and present as acute stroke with or without a preceding transient ischemic attack, or even as recurrent TIAs without stroke.<sup>2,5,10,25,26</sup> Table 1 lists the cases of acute stroke reported in patients with NS in the English language literature.<sup>2-5,12,15,24-26,30-32</sup> Like the asymp-

tomatic infarcts, most of the patients were young and nearly all had coexisting extracranial disease. Also, unlike sarcoidosis, which has a female predilection, cases with cerebrovascular findings showed a male predilection.

Given the existing literature, one may therefore expect to see both silent and symptomatic lesions on imaging, which is concordant with the institutional experience of the authors. The infarcts are often small and may be most apparent on diffusion-weighted images as foci of restricted diffusion, often in the deep brain substance. T2-weighted images may not be very useful and any surrounding parenchymal edema or white matter lesions tend to make them even more inconspicuous. Occasionally, the infarcts may be multiple, recurrent, or of varying ages (Fig 2).<sup>4,25</sup> Rarely, lesions may be more superficial and subcortical, occurring secondary to involvement of the cortical vessels from surrounding meningeal inflammation (Fig 3). Although the presence of infarcts by itself is not specific for underlying NS, its occurrence, especially in young patients with coexisting intracranial findings of NS or known systemic sarcoidosis, may point to an underlying granulomatous etiology. Rarely, an ischemic insult may be the first manifestation of isolated NS without systemic involvement.<sup>2</sup> In such cases, the diagnosis may be especially challenging and eventually require histopathologic confirmation.

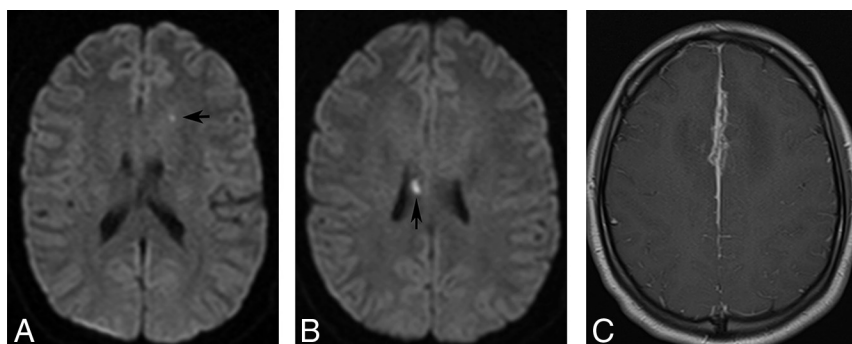
Large-vessel strokes in NS are exceptionally rare, as can be expected from the less severe and noncircumferential vessel wall involvement on pathology.<sup>13,25,26</sup> MRA or conventional angiography in such cases may show focal vascular stenosis or occlu-

sion.<sup>4,5,15,26</sup> A Moyamoya-like vasculopathy pattern has also been reported in association with NS and may be unilateral or bilateral.<sup>33</sup> Because the underlying etiology is vasculitis, one may see changes of both ischemia and hemorrhage in these patients at different time points (Fig 4).

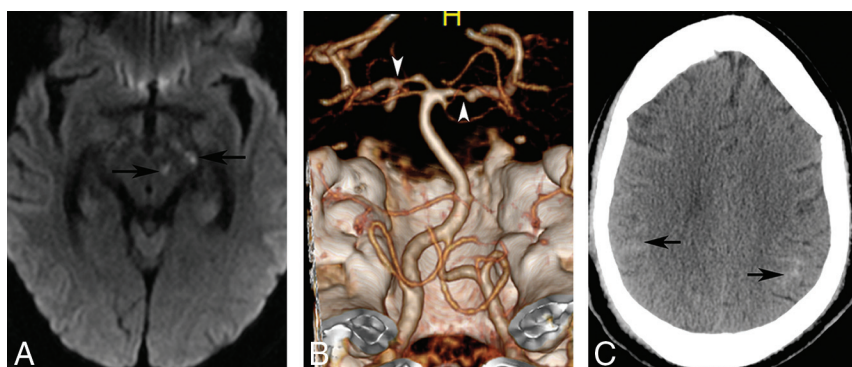
In patients with ischemic strokes, the differential considerations include both embolic and nonembolic etiologies. Cardioembolic infarcts secondary to atheromatous disease are possible

but are statistically less likely among younger populations. The leading nonembolic consideration is the primary angiitis of the CNS, which can closely mimic vasculitis of NS on histopathology. Primary angiitis of the CNS, however, commonly affects patients in middle age, has an aggressive clinical course, and is confined to the CNS, unlike NS which invariably has extracranial disease. Additionally, primary angiitis of the CNS often has abnormal angiographic findings, reported in up to 50%–90% of patients.<sup>34</sup>

CNS vasculitis may also be seen in association with collagen vascular diseases, drug abuse, or underlying infectious (HIV, herpes simplex virus, syphilis) or inflammatory lesions (Behçet disease, polyarteritis nodosa, Wegener disease).<sup>35</sup> In these cases, the constellation of clinical and imaging findings, presence of known systemic disease, or history of drug abuse may help narrow the differential considerations.



**FIG 3.** Axial DWIs reveal tiny subcortical infarcts (A and B) in a 22-year-old female patient. Axial postcontrast image (C) shows prominent involvement of the midline falx anteriorly. The infarcts were presumably secondary to involvement of the cortical vessels.



**FIG 4.** Axial DWI (A) in a 38-year-old male patient with NS reveals punctate infarcts involving the left cerebral peduncle and midbrain (arrows). A volume-rendered CT angiogram shows multifocal stenoses involving the P1 segments of the bilateral posterior cerebral arteries (B). The patient again presented after 2 months with severe headache. Noncontrast CT (C) image at this time shows acute subarachnoid hemorrhage over bilateral parietal convexities (arrows).

### Hemorrhagic Lesions

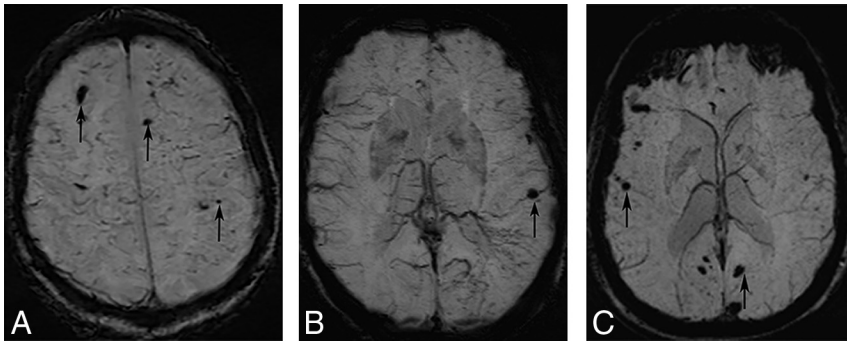
Hemorrhagic lesions in NS are also rare, with a reported incidence of 0.6% in unselected sarcoidosis and series of patients with NS.<sup>36,37</sup> Because the common denominator in both ischemic and hemorrhagic lesions is underlying vasculitis, it is not surprising that they both have a male predilection, unlike sarcoidosis, which is more common in females.<sup>36,38,39</sup>

Table 2 lists the cases of NS with intracerebral hemorrhage (ICH) reported in the English language literature where imaging was performed.<sup>28,36–47</sup> A review of these cases reveals that ICH in patients with NS is often intraparenchymal and is more likely to be supratentorial. Rarely, patients may also present with

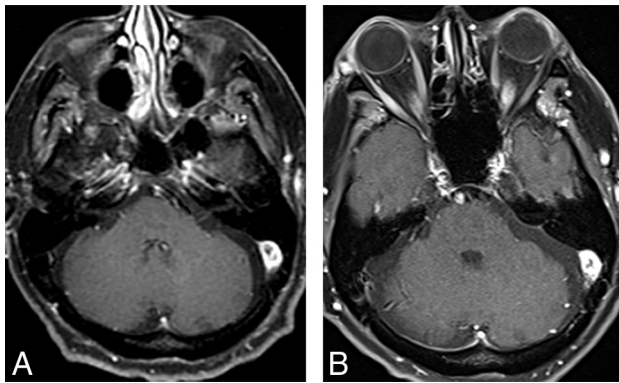
**Table 2: Cases of NS with ICH in the reported English language literature**

Author	Year	Age (yr)/Sex	Zajicek Criteria	CT/MRI	MRA/DSA	Site	Systemic Disease
Caplan et al <sup>28</sup>	1983	21/M	Probable	Y/NS	NS	Left cerebellar	Y
Oksanen <sup>46</sup>	1986	NS/NS	NS	NS/NS	NS	NS	NS
Oksanen <sup>46</sup>	1986	NS/NS	NS	NS/NS	NS	NS	NS
Berek et al <sup>40</sup>	1993	35/M	Possible	Y/Y	Nm DSA	SAH on LP	N
Libman et al <sup>42</sup>	1997	48/F	Probable	Y/Y	+ DSA	Multiple, left cerebral hemisphere	Y
Eid et al <sup>43</sup>	1998	31/F	Probable	Y/NS	+ DSA	Right frontal	Y
Cipri et al <sup>47</sup>	2000	31/M	Definite	Y/Y	Nm DSA	Right occipital	N
Dakdouki et al <sup>45</sup>	2005	25/M	Probable	NS/Y	NS	Pons	Y
Tsappidi et al <sup>38</sup>	2011	43/M	Definite	Y/Y	Nm DSA/MRA	Multiple, supratentorial	N
O'Dwyer et al <sup>36</sup>	2013	41/M	Definite	Y/Y	Nm CTA	Cerebellum	N
O'Dwyer et al <sup>36</sup>	2013	41/M	Probable	Y/Y	Nm MRA	Pontomesencephalic	Y
O'Dwyer et al <sup>36</sup>	2013	36/M	Probable	Y/Y	Nm DSA	Left frontal	Y
Travers et al <sup>44</sup>	2014	37/M	Probable	NS/Y	Nm	Right temporal	Y
Pegat et al <sup>41</sup>	2015	48/F	Probable	NS/Y	NS	Left frontoparietal	Y
Vargas et al <sup>37</sup>	2016	62/F	Probable	Y/Y	Nm MRA	Multiple microhemorrhages	Y
Vukojević et al <sup>39</sup>	2017	45/F	Probable	Y/Y	Nm CTA	Multiple, supra- and infratentorial	Y

**Note:**—Nm indicates normal findings; LP, lumbar puncture; N, no; NS, not specified; Y, yes; +, positive.



**FIG 5.** Axial SWI at the level of centrum semiovale (A) and basal ganglia (B) from 1 patient and at the level of basal ganglia in the other patient (C). There are multiple scattered foci of susceptibility involving bilateral subcortical white matter (arrows) with relative sparing of the basal ganglia in both patients.



**FIG 6.** A and B, Axial postcontrast images through the posterior fossa obtained over an interval of 10 years. The prominent left sigmoid sinus enhancement remains essentially unchanged. The patient also had superior sagittal sinus involvement (not shown).

subarachnoid hemorrhage.<sup>40</sup> For unclear reasons, patients with symptomatic ICH seem to have a lobar predilection. This is somewhat counterintuitive because perivascular involvement in NS is most prominent in the basal ganglia, brain stem, and spinal cord.<sup>12-14</sup> Isolated postmortem reports in patients with NS with ICH have also documented hemorrhages in the basal ganglia and posterior fossa compared with the cerebral hemispheres.<sup>14,28</sup> Although some of the apparent lobar predilection may be from a reporting bias of larger symptomatic lesions, the reasons for relative sparing of the basal ganglia in the reported studies are unclear and unlikely to be entirely coincidental. Like some of the recently reported cases<sup>37,39,42</sup> and the authors' personal experiences, distinct peripheral distribution of the ICH with sparing of the basal ganglia may be seen, though its significance is not clear (Fig 5).

The overall heterogeneity of the lesion distribution may be secondary to pathologically demonstrated "mixed" venous and arterial involvement.<sup>36</sup> As may be expected with predominantly small-vessel involvement, hemorrhagic lesions in patients with NS are often small and may be microhemorrhagic, though large parenchymal hematomas do rarely occur.<sup>36,37,43</sup> Similar to ischemic strokes, multiple or recurrent hemorrhages may also be seen.<sup>37,39,42</sup> Also analogous to cases with ischemic lesions, angiographic studies (DSA/MRA/CTA) are often unyielding. As shown

in Table 2, of the 11 cases in which an angiographic evaluation was performed, positive findings were only noted in 2 cases.

The initial diagnosis of NS in patients presenting with ICH can be very challenging, especially because almost half of these patients may not have known sarcoidosis.<sup>46</sup> Although it has been previously reported that about 31% of these patients have isolated NS, as noted in Table 2, most of these patients do have extra-CNS manifestations, though they may not be symptomatic.<sup>36</sup> Nevertheless, atypical locations of hemorrhage or multiple smaller or microhemorrhagic lesions, especially in the presence of other imaging signs of NS, should raise the suspicion in the appropriate clinical setting.<sup>36,44</sup>

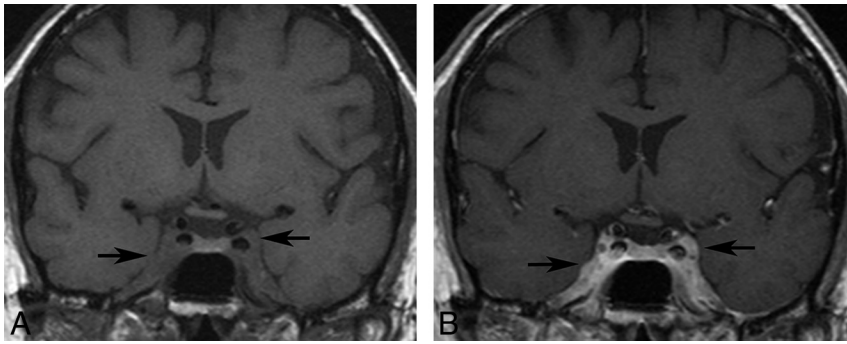
There is scarce literature on the impact of immunosuppressive therapy on patients with ischemic lesions. However, cases with hemorrhagic lesions do appear responsive to early aggressive antigranulomatous therapy, an important consideration because the microhemorrhages tend to increase with time and have been anecdotally associated with cognitive decline.<sup>36,37</sup> An increase in intraparenchymal hemorrhages associated with steroid tapering or discontinuation has also been reported in multiple recent cases, highlighting the need for close follow-up while tapering immunosuppressive therapy.<sup>37,39,44,45</sup>

The primary differential consideration of ICH in NS includes vasculitis, especially primary angiitis of the CNS, as discussed previously. Similar to the NS patients with ischemic lesions, the angiographic studies in patients with ICH are also often negative, though some cases may show large vessel vasculitis.<sup>36,42,43,46</sup> Other differential considerations may include cerebral amyloid angiopathy, hypertensive angiopathy, and cerebral autosomal dominant arteriopathy with subcortical infarcts and leukoencephalopathy, though these tend to affect older patients in the first 2 instances and often have a predilection for the temporal lobes and external capsule in the latter.<sup>37</sup>

### Dural Sinus Involvement

Dural sinus thrombosis in NS is exceptionally rare, with only 5 cases reported in the literature.<sup>48-52</sup> The underlying mechanism is unclear and is presumably secondary to granulomatous meningeal involvement.<sup>51,52</sup> Most patients present with symptoms of raised intracranial pressure. Given the rare occurrence, there is limited available imaging literature. The superior sagittal sinus is most frequently involved. Byrne and Lawton<sup>49</sup> reported a case of meningeal sarcoidosis in a 32-year-old woman with an obstructed straight sinus and bilateral transverse sinuses on angiography. They also noted meningeal enhancement along the occluded sinuses without any change in appearance on follow-up imaging at 5 years. The patient had imaging findings of intracranial hypertension, including an empty sella and erosion of the dorsum sella.

Leeds et al<sup>52</sup> presented a case of superior sagittal sinus thrombosis, which they attributed to surrounding granulomatous inflammation. However, the images were presented as a part of



**FIG 7.** Coronal pre- (A) and postcontrast (B) images in a patient with NS show nodular thickening and enhancement of the cavernous sinuses bilaterally. The patient had additional intracranial stigmata of NS (not shown), and the cavernous sinus involvement was presumed to be secondary to NS.

an imaging review article with no additional patient-specific details. Chapelon et al<sup>51</sup> also reported a case of a 26-year-old man with NS and superior sagittal sinus thrombosis in their review of 35 patients without much additional information.<sup>51</sup> Akova et al<sup>48</sup> presented a case report of possible NS in a 35-year-old man with superior sagittal sinus thrombosis associated with meningeal sarcoidosis and clinical features of pseudotumor cerebri.

More recently, Degardin et al<sup>50</sup> presented a case of a 47-year-old man with superior sagittal sinus thrombosis. They also noted that the thrombosis persisted at 6-month follow-up despite satisfactory anticoagulation. The patient also had large-vessel involvement as well as multiple intraparenchymal hemorrhages of varying ages, which were attributed to granulomatous angiitis. We also encountered a similar case of thrombosis in a 61-year-old male patient involving the sagittal and left transverse sinuses over a background of multiple intraparenchymal hemorrhages of varying ages. Our patient also showed a persistently enlarged and enhancing sinus with surrounding collaterals that remained unchanged for 10 years (Fig 6). This feature contrasts with a bland thrombus, which is usually dissolved with anticoagulation, leaving behind a normal or attenuated vessel and a collateral network. The persistent imaging findings are possibly from continued granulomatous sinus involvement.

### Cavernous Sinus Involvement

Cavernous sinus involvement in NS is again exceedingly rare, with only 2 prior reported cases.<sup>53,54</sup> Chang et al<sup>53</sup> reported a case of left cavernous sinus involvement in a 54-year-old man with concurrent pulmonary sarcoidosis. The other reported case was by Kim et al<sup>54</sup> of a 40-year-old man with NS localized to the right cavernous sinus without any additional CNS or extra-CNS involvement. In both cases, the imaging findings were nonspecific and showed a T1-isointense, T2-hyperintense, enhancing cavernous sinus mass. We also encountered a case like that of Chang et al with nodular thickening of the cavernous sinus, most apparent on the contrast-enhanced images (Fig 7). Overall, the rarity of cavernous sinus involvement, the scarcity of literature, and nonspecific imaging findings preclude any meaningful conclusions about the expected MR imaging findings.

The differential considerations in such cases are invariably broad and include neoplasms, infective lesions, or inflammatory conditions such as Tolosa-Hunt syndrome. Coexisting CNS or

extra-CNS findings of sarcoidosis may be the only helpful clue in such cases.

### CONCLUSIONS

The authors present a review of the various cerebrovascular manifestations that may be encountered in patients with NS. Although rare, these are of utmost importance, not only because of the associated morbidity but also because patients may present with isolated NS and pose considerable diagnostic challenges, especially when the manifestations are atypical. Vasculitic manifestations of NS should be considered in patients with recurrent hemorrhages or infarcts, espe-

cially when the patients are younger and demonstrate additional intracranial imaging findings that may support NS.

Disclosures: Suyash Mohan—UNRELATED: Grants/Grants Pending: Novocure, Radiological Society of North America, Guerbet, Comments: research grants\*. \*Money paid to the institution.

### REFERENCES

1. Bathla G, Singh AK, Policeni B, et al. **Imaging of neurosarcoidosis: common, uncommon, and rare.** *Clin Radiol* 2016;71:96–106 CrossRef Medline
2. Hodge MH, Williams RL, Fukui MB. **Neurosarcoidosis presenting as acute infarction on diffusion-weighted MR imaging: summary of radiologic findings.** *AJNR Am J Neuroradiol* 2007;28:84–86 Medline
3. Brisman JL, Hinduja A, McKinney JS, et al. **Successful emergent angioplasty of neurosarcoid vasculitis presenting with strokes.** *Surg Neurol* 2006;66:402–04 CrossRef Medline
4. Michotte A, Dequenne P, Jacobovitz D, et al. **Focal neurological deficit with sudden onset as the first manifestation of sarcoidosis: a case report with MRI follow-up.** *Eur Neurol* 1991;31:376–79 Medline
5. Macedo PJ, da Silveira VC, Ramos LT, et al. **Isolated central nervous system vasculitis as a manifestation of neurosarcoidosis.** *J Stroke Cerebrovasc Dis* 2016;25:e89–e92 CrossRef Medline
6. Smith JK, Matheus MG, Castillo M, et al. **Imaging manifestations of neurosarcoidosis.** *AJR Am J Roentgenol* 2004;182:289–95 CrossRef Medline
7. Izbicki G, Chavko R, Banauch GI, et al. **World Trade Center “sarcoid-like” granulomatous pulmonary disease in New York City Fire Department rescue workers.** *Chest J* 2007;131:1414–23 CrossRef Medline
8. Iwai K, Takemura T, Kitalchi M, et al. **Pathological studies on sarcoidosis autopsy, II: early change, mode of progression and death pattern.** *Acta Pathol Jpn* 1993;43:377–85 Medline
9. Robert F. **Sarcoidosis of the central nervous system: report of a case and review of the literature.** *Arch Neurol* 1962;7:442–49 CrossRef Medline
10. Duffey P, Bates D. **Transient focal neurological deficit in sarcoidosis.** *Sarcoidosis Vasc Diffuse Lung Dis* 1997;14:171–72 Medline
11. Camp WA, Frierson JG. **Sarcoidosis of the central nervous system: a case with postmortem studies.** *Arch Neurol* 1962;7:432–41 CrossRef Medline
12. Brown MM, Thompson AJ, Wedzicha JA, et al. **Sarcoidosis presenting with stroke.** *Stroke* 1989;20:400–05 CrossRef Medline
13. Reske-Nielsen E, Harmsen A. **Periangiitis and panangiitis as a manifestation of sarcoidosis of the brain: report of a case.** *J Nerv Ment Dis* 1962;135:399–412 CrossRef Medline
14. Herring AB, Urich H. **Sarcoidosis of the central nervous system.** *J Neurol Sci* 1969;9:405–22 CrossRef Medline
15. González-Aramburu I, Ruiz-Pérez E, Gómez-Román J, et al. **Sarcoid-**

- osis presenting as transient ischemic attack status. *J Stroke Cerebrovasc Dis* 2012;21:515–17 CrossRef Medline
16. Tsukada N, Yanagisawa N, Mochizuki I. **Endothelial cell damage in sarcoidosis and neurosarcoidosis: autoantibodies to endothelial cells.** *Eur Neurol* 1995;35:108–12 Medline
  17. Siasos G, Tousoulis D, Gialafos E, et al. **Association of sarcoidosis with endothelial function, arterial wall properties, and biomarkers of inflammation.** *Am J Hypertens* 2011;24:647–53 CrossRef Medline
  18. Letizia C, Danese A, Reale MG, et al. **Plasma levels of endothelin-1 increase in patients with sarcoidosis and fall after disease remission.** *Panminerva Med* 2001;43:257–61 Medline
  19. Mochizuki I, Kubo K, Hond T. **Widespread heavy damage of capillary endothelial cells in the pathogenesis of sarcoidosis: evidence by monoclonal von Willebrand factor immunohistochemistry in the bronchus and lung of patients with sarcoidosis.** *Sarcoidosis Vasc Diffuse Lung Dis* 2014;31:182–90 CrossRef Medline
  20. Liebow AA. **The J Burns Amberson lecture: pulmonary angitis and granulomatosis.** *Am Rev Respir Dis* 1973;108:1–18 Medline
  21. Rosen Y. **Four decades of necrotizing sarcoid granulomatosis: what do we know now?** *Arch Pathol Lab Med* 2015;139:252–62 CrossRef Medline
  22. Churg A, Carrington CB, Gupta R. **Necrotizing sarcoid granulomatosis.** *Chest* 1979;76:406–13 CrossRef Medline
  23. Manz HJ. **Pathobiology of neurosarcoidosis and clinicopathologic correlation.** *Can J Neurol Sci* 1983;10:50–55 CrossRef Medline
  24. Zadra M, Brambilla A, Erli LC, et al. **Neurosarcoidosis, stroke and antiphospholipid antibodies: a case report.** *Eur J Neurol* 1996;3:146–48 CrossRef
  25. Raza N, Schreck KC. **Neurosarcoidosis presenting with recurrent strokes: a case report and literature review.** *Neurohospitalist* 2017;7:91–95 CrossRef Medline
  26. Corse AM, Stern BJ. **Neurosarcoidosis and stroke.** *Stroke* 1990;21:152–53 Medline
  27. Schonell ME, Gillespie WJ, Maloney AF. **Cerebral sarcoidosis.** *Br J Dis Chest* 1968;62:195–99 CrossRef Medline
  28. Caplan L, Corbett J, Goodwin J, et al. **Neuro-ophthalmologic signs in the angitic form of neurosarcoidosis.** *Neurology* 1983;33:1130–35 CrossRef Medline
  29. Meyer JS, Foley JM, Campagna-Pinto D. **Granulomatous angitis of the meninges in sarcoidosis.** *AMA Arch Neurol Psychiatry* 1953;69:587–600 CrossRef Medline
  30. Das SK, Sinha I, Kundu TN, et al. **Two cases of neurosarcoidosis presenting as peripheral neuropathy and stroke in young.** *J Assoc Physicians India* 1998;46:479–81 Medline
  31. Navi BB, DeAngelis LM. **Sarcoidosis presenting as brainstem ischemic stroke.** *Neurology* 2009;72:1021–22 CrossRef Medline
  32. Campbell J, Kee R, Bhattacharya D, et al. **Systemic sarcoidosis presenting with headache and stroke-like episodes.** *Case Rep Immunol* 2015;2015:619867 CrossRef Medline
  33. Ko JK, Lee SW, Choi CH. **Moyamoya-like vasculopathy in neurosarcoidosis.** *J Korean Neurosurg Soc* 2009;45:50–52 CrossRef Medline
  34. Birnbaum J, Hellmann DB. **Primary angitis of the central nervous system.** *Arch Neurol* 2009;66:704–09 CrossRef Medline
  35. Grossman RI, Yousem DM. *Neuroradiology: The Requisites.* St Louis: Mosby; 2003:196–204
  36. O'Dwyer JP, Al-Moyeed BA, Farrell MA, et al. **Neurosarcoidosis-related intracranial haemorrhage: three new cases and a systematic review of the literature.** *Eur J Neurol* 2013;20:71–78 CrossRef Medline
  37. Vargas A, Gorelick PB, Testai FD. **Progressive central nervous system vasculopathy in sarcoidosis: a case report.** *J Neurol Sci* 2016;362:153–54 CrossRef Medline
  38. Tsappidi S, Hui F, Turan TN, et al. **Intracerebral hemorrhage: an unusual presentation of neurosarcoidosis.** *Neurologist* 2011;17:292–96 CrossRef Medline
  39. Vukojević Z, Ilić TV, Dominović-Kovačević A, et al. **Neurosarcoidosis and multiple intracerebral hematomas: an unusual clinical presentation.** *J Neurol Sci* 2017;379:22–24 CrossRef Medline
  40. Berek K, Kiechl S, Willeit J, et al. **Subarachnoid hemorrhage as presenting feature of isolated neurosarcoidosis.** *Clin Investig* 1993;71:54–56 Medline
  41. Pegat B, Drapier S, Morandi X, et al. **Spinal cord hemorrhage in a patient with neurosarcoidosis on long-term corticosteroid therapy: case report.** *BMC Neurol* 2015;15:123 CrossRef Medline
  42. Libman RB, Sharfstein S, Harrington W, et al. **Recurrent intracerebral hemorrhage from sarcoid angitis.** *J Stroke Cerebrovasc Dis* 1997;6:373–75 CrossRef Medline
  43. Eid H, O'Connor CR, Catalano E, et al. **Life-threatening vasculitis associated with sarcoidosis.** *J Clin Rheumatol* 1998;4:338–43 CrossRef Medline
  44. Travers F, Maltête D, Morisse-Pradier H. **Intracranial hemorrhage in neurosarcoidosis.** *J Neurol Sci* 2014;341:185–86 CrossRef Medline
  45. Dakdouki GK, Kanafani ZA, Ishak G, et al. **Intracerebral bleeding in a patient with neurosarcoidosis while on corticosteroid therapy.** *South Med J* 2005;98:492–95 CrossRef Medline
  46. Oksanen V. **Neurosarcoidosis: clinical presentations and course in 50 patients.** *Acta Neurol Scand* 1986;73:283–90 Medline
  47. Cipri S, Gambardella G, Campolo C, et al. **Unusual clinical presentation of cerebral-isolated sarcoidosis: case report and review of the literature.** *J Neurosurg Sci* 2000;44:140–44 Medline
  48. Akova YA, Kansu T, Duman S. **Pseudotumor cerebri secondary to dural sinus thrombosis in neurosarcoidosis.** *J Clin Neuroophthalmol* 1993;13:188–89 Medline
  49. Byrne JV, Lawton CA. **Meningeal sarcoidosis causing intracranial hypertension secondary to dural sinus thrombosis.** *Br J Radiol* 1983;56:755–57 CrossRef Medline
  50. Degardin A, Devos P, Vermersch P, et al. **Cerebrovascular symptomatic involvement in sarcoidosis.** *Acta Neurol Belg* 2010;110:349–52 Medline
  51. Chapelon C, Ziza JM, Piette JC, et al. **Neurosarcoidosis: signs, course and treatment in 35 confirmed cases.** *Medicine* 1990;69:261–76 CrossRef Medline
  52. Leeds NE, Zimmerman RD, Elkin CM, et al. **Neurosarcoidosis of the brain and meninges.** *Semin Roentgenol* 1985;20:387–92 CrossRef Medline
  53. Chang CS, Chen WL, Li CT, et al. **Cavernous sinus syndrome due to sarcoidosis: a case report.** *Acta Neurol Taiwan* 2009;18:37–41 Medline
  54. Kim DH, Cho WH, Cho KS, et al. **Solitary cavernous sinus neurosarcoidosis mimicking neurosyphilis.** *J Korean Neurosurg Soc* 2014;55:61–63 CrossRef Medline