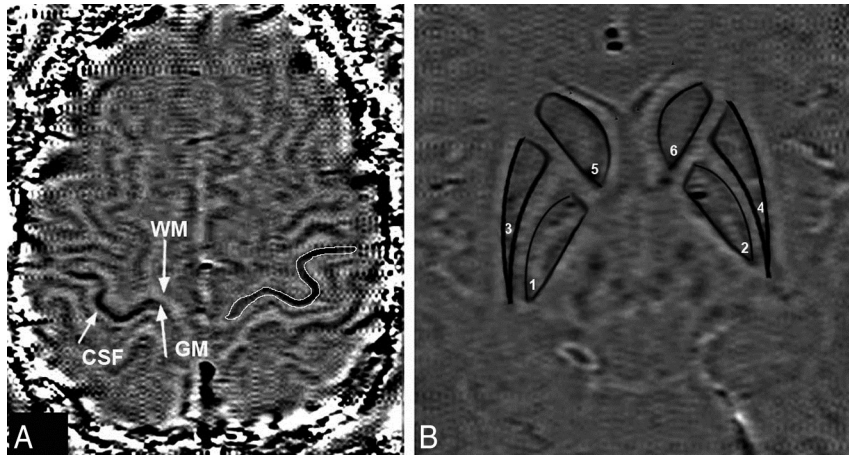


On-line Table: Demographic characteristics of patients with ALS and controls^a

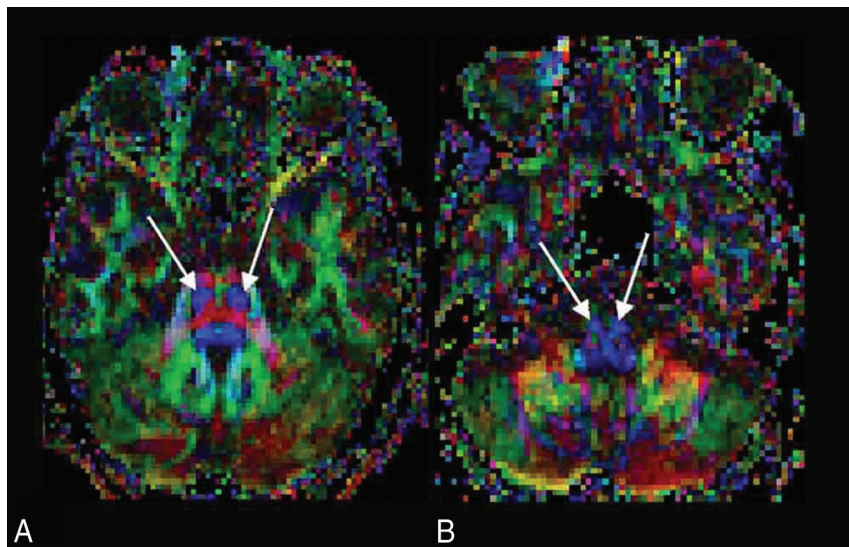
	ALS	Healthy Controls
No.	17	15
Age at inclusion (yr) (SD)	54.41 (13.99)	56.8 (8.28)
Female sex	10	7
Age at onset (yr) (SD)	51.94 (14.35)	NA
Duration of illness (mo) (SD)	11.17 (7.79)	NA
Site at onset		NA
Bulbar	8	
UMN	1	
LMN	7	
Respiratory muscles	1	
Pseudobulbar	3	
Combinations of clinical signs at presentation		NA
UMN+bulbar	2	
LMN+bulbar	3	
Bulbar+pseudobulbar	1	
UMN+LMN	2	
All	9	
Pyramidal signs		
DTR (grade) (No. of patients)	2+ (3), 3+ (12), 4+ (2)	1+
Tone (grade) (No. of patients)	0 (2), Grade 1 (4), grade 1 (6), grade 2 (4), grade 4 (1)	Normal
Plantar	Flexor (7), extensor (10)	Flexor
Fasciculation (No. of patients)		Absent
Tongue	9	
Body and limb	10	
Ambulant	13	
Not ambulant	5	

Note:—UMN indicates upper motor neuron; LMN, lower motor neuron; DTR, deep tendon reflex; grading of reflexes, grading of tone; NA, not applicable.

^aData are in mean (SD) or in number range.



ON-LINE FIG 1. Representative section showing ROIs where phase is measured in the posterior bank of motor cortex GM, adjacent WM, central sulcus CSF (A) and the globus pallidus (1, 2), putamen (3, 4), and caudate nucleus (5, 6) (B).



ON-LINE FIG 2. FA color maps of the pons (A) and medullary pyramid (B) of a patient with ALS showing the corticospinal tracts (*arrows*).