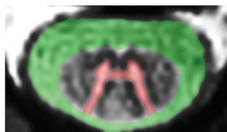
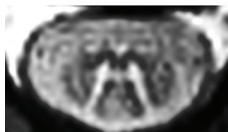
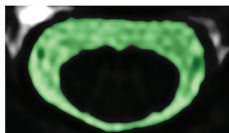


↓ *CSF Segmentation*



*Copy of CSF Mask &
GM Segmentation*

ON-LINE FIGURE. Manual segmentations of acquired axial AMIRA slices. In a first step, the CSF was manually segmented using the average of the last 3 AMIRA images. The CSF “mask” was then overlaid on the average of the first 5 AMIRA images. Subsequently, the SC GM was also manually segmented.

On-line Table: GM, WM, and TSC reproducibility measurements^a

Parameter	GM		WM		TSC		MAS vs AM
	MAS	AM	MAS	AM	MAS	AM	
Intrasession (<i>n</i> = 240)							
CV (%)	5.54 ± 4.14	4.10 ± 3.48	3.69 ± 3.23	2.54 ± 2.69	2.99 ± 2.73	1.64 ± 1.63	GM: <i>P</i> < .001 WM: <i>P</i> < .001 TSC: <i>P</i> < .001
DSC	0.86 ± 0.03	0.89 ± 0.03	0.93 ± 0.02	0.95 ± 0.02	0.97 ± 0.01	0.98 ± 0.01	GM: <i>P</i> < .001 WM: <i>P</i> < .001 TSC: <i>P</i> < .001
HD (mm)	0.64 ± 0.22	0.63 ± 0.39	0.54 ± 0.13	0.54 ± 0.24	0.44 ± 0.17	0.32 ± 0.15	GM: <i>P</i> = .77 WM: <i>P</i> = .80 TSC: <i>P</i> < .001
Intersession (<i>n</i> = 454)							
CV (%)	6.34 ± 4.66	4.77 ± 4.71	4.68 ± 3.75	2.95 ± 2.58	3.75 ± 3.13	2.21 ± 1.93	GM: <i>P</i> < .001 WM: <i>P</i> < .001 TSC: <i>P</i> < .001
DSC	0.85 ± 0.03	0.88 ± 0.04	0.92 ± 0.02	0.94 ± 0.02	0.97 ± 0.02	0.98 ± 0.01	GM: <i>P</i> < .001 WM: <i>P</i> < .001 TSC: <i>P</i> < .001
HD (mm)	0.68 ± 0.24	0.71 ± 0.46	0.58 ± 0.16	0.59 ± 0.28	0.50 ± 0.19	0.37 ± 0.14	GM: <i>P</i> = .10 WM: <i>P</i> = .45 TSC: <i>P</i> < .001
Intrarater (<i>n</i> = 60)							
CV (%)	19.18 ± 12.16	0 ± 0	4.14 ± 3.34	0 ± 0	1.17 ± 1.92	0 ± 0	NA
DSC	0.85 ± 0.07	1 ± 0	0.96 ± 0.02	1 ± 0	0.99 ± 0.01	1 ± 0	NA
HD (mm)	0.62 ± 0.30	0 ± 0	0.44 ± 0.15	0 ± 0	0.20 ± 0.13	0 ± 0	NA
Inter-rater (<i>n</i> = 283)							
CV (%)	12.03 ± 8.87	NA	8.06 ± 6.15	NA	6.50 ± 5.17	NA	NA
DSC	0.85 ± 0.05	NA	0.90 ± 0.04	NA	0.95 ± 0.03	NA	NA
HD (mm)	0.75 ± 0.32	NA	0.75 ± 0.27	NA	0.68 ± 0.34	NA	NA

Note:—MAS indicates manual segmentations; AM, automatic segmentations; CV, coefficient of variation; DSC, Dice coefficient; *n*, the number of MRI axial slices taken into account for each parameter; NA, not applicable; TSC, total spinal cord.

^aAll values are shown as mean ± SD. *P* values were obtained through paired 2-sample *t* tests ($\alpha = .05$), after performing a square root transformation of the CV, a cubic transformation of the DSC, and a logarithmic transformation of the HD.