

Are your **MRI contrast agents** cost-effective?

Learn more about generic **Gadolinium-Based Contrast Agents**.



**AJNR**

**Visual Cerebral Microbleed Detection on 7T MR Imaging: Reliability and Effects of Image Processing**

J. de Bresser, M. Brundel, M.M. Conijn, J.J. van Dillen, M.I. Geerlings, M.A. Viergever, P.R. Luijten and G.J. Biessels

This information is current as of April 23, 2024.

*AJNR Am J Neuroradiol* published online 16 February 2012  
<http://www.ajnr.org/content/early/2012/02/16/ajnr.A2960>

# Visual Cerebral Microbleed Detection on 7T MR Imaging: Reliability and Effects of Image Processing

## TECHNICAL NOTE

J. de Bresser  
M. Brundel  
M.M. Conijn  
J.J. van Dillen  
M.I. Geerlings  
M.A. Viergever  
P.R. Luijten  
G.J. Biessels

**SUMMARY:** MR imaging at 7T has a high sensitivity for cerebral microbleed detection. We identified mIP processing conditions with an optimal balance between the number of visually detected microbleeds and the number of sections on 7T MR imaging. Even with optimal mIP processing, the limited size of some of the microbleeds and the susceptibility effects of other adjacent structures were a challenge for visual detection, which led to a modest inter-rater agreement, mainly due to missed microbleeds. Automated lesion-detection techniques may be required to optimally benefit from the increased spatial resolution offered by 7T MR imaging.

**ABBREVIATIONS:** ICC = intraclass correlation coefficient; MARS = Microbleed Anatomical Rating Scale; mIP = minimum intensity projection; SI = similarity index; SMART = Second Manifestations of ARterial disease

There is a growing interest in cerebral microbleeds on MR imaging in the context of aging, cerebrovascular disease, and dementia. Recent studies indicate that microbleeds may be markers of specific underlying microvascular pathologies. Furthermore, the presence of microbleeds may convey prognostic information in patients with stroke or dementia. Improvement in the detection of microbleeds is important to further our understanding of this novel marker of cerebral small-vessel disease.

The sensitivity to detect microbleeds increases with higher MR imaging field strengths.<sup>1</sup> On 7T dual-echo T2\*-weighted MR imaging, for example, up to 3 times as many microbleeds can be detected than on 1.5T MR images.<sup>2</sup> However, susceptibility effects of other structures also complicate microbleed detection at higher field strengths.<sup>1</sup> We sought to determine mIP processing conditions with an optimal balance between accuracy and rating time and to determine intra- and inter-rater agreement for these processing conditions on 7T MR imaging.

## Technique

### Subjects

Subjects were selected from the SMART 7T MR imaging study.<sup>2</sup> The SMART study is a prospective cohort study that assesses brain changes in patients with manifest arterial disease. For the comparison of the different mIP conditions, we first selected scans from 3 subjects (mean age, 72 ± 8 years) who each had at least 10 microbleeds on their 7T MR images, based on previous evaluations by raters who were not involved in the present study.

Received April 5, 2011; accepted after revision October 25.

From the Image Sciences Institute (J.d.B., M.A.V., P.R.L.); Department of Neurology (J.d.B., M.B., J.J.v.D., G.J.B.), Rudolf Magnus Institute of Neuroscience; Department of Radiology (M.M.C., P.R.L.); and Julius Center for Health Sciences and Primary Care (M.M.C., M.I.G.), University Medical Center Utrecht, Utrecht, the Netherlands.

This work was supported by a High Potential grant from Utrecht University.

Please address correspondence to Jeroen de Bresser, Department of Neurology, University Medical Center Utrecht, G03.228, PO Box 85500, Heidelberglaan 100, 3508 GA Utrecht, the Netherlands; e-mail: J.deBresser@umcutrecht.nl

<http://dx.doi.org/10.3174/ajnr.A2960>

Subsequently, scans from 10 additional subjects (8 with and 2 without microbleeds; mean age, 67 ± 8 years; the raters were not aware of the number of subjects with and without microbleeds) were selected to study intra- and inter-rater agreement. This study was approved by the local ethics committee of the University Medical Center Utrecht, and all subjects signed an informed consent form.

### MR Imaging Scanning Protocol

Scans were acquired on a 7T MR system (Philips Healthcare, Cleveland, Ohio) with a volume-transmit and 16-channel receive head coil (Nova Medical, Wilmington, Massachusetts). Dual-echo 3D T2\*-weighted images were obtained (TR/first TE/second TE = 20/2.5/15 ms), with an acquired voxel size of 0.4 × 0.4 × 0.6 mm<sup>3</sup>, reconstructed to 0.35 × 0.35 × 0.3 mm<sup>3</sup> (for details see Conijn et al<sup>1</sup>). FLAIR images were obtained (TR/TE/TI = 8000/294/2315 ms) with an acquired voxel size of 0.99 × 1.00 × 1.10 mm<sup>3</sup>, reconstructed to 0.98 × 0.98 × 0.55 mm<sup>3</sup>.

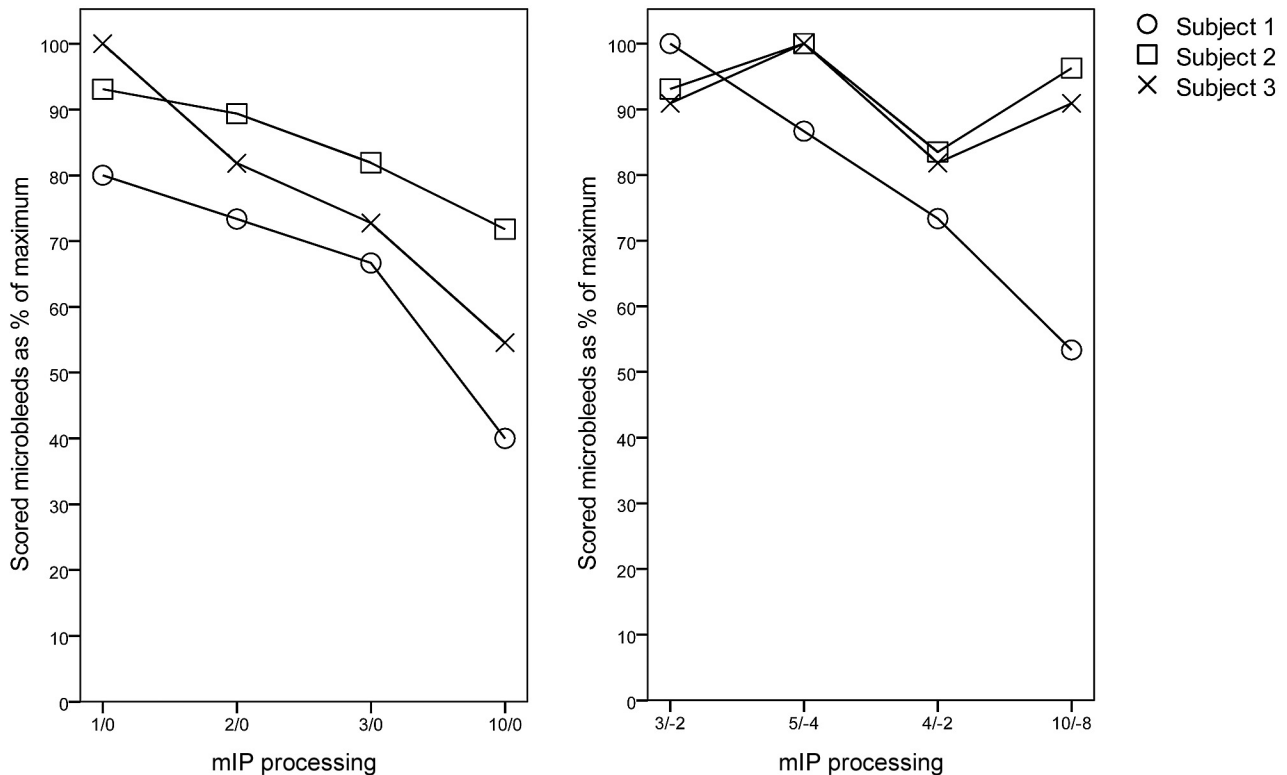
Eight of the 10 subjects also had a 1.5T MR imaging scan (Gyrosan ACS-NT; Philips Healthcare, Best, the Netherlands) with 3D T2\*-weighted images (TR/TE = 25/35 ms) with an acquired voxel size of 0.8 × 0.8 × 0.8 mm<sup>3</sup> (for details see Conijn et al<sup>2</sup>) and T2-weighted images (TR/TE = 2200/100 ms) with an acquired voxel size of 0.90 × 1.03 × 4.00 mm<sup>3</sup> on the same day as the 7T scan.

### Image Processing and Design of the Study

We first determined the optimal mIP conditions for visual microbleed rating at 7T. Scans of the 3 subjects with multiple microbleeds were processed with variations in section thickness (section thickness/gap [negative gap means overlap] in millimeters: 1/0, 2/0, 3/0, 10/0) and overlap (3/-2, 5/-4, 4/-2, 10/-8) and rated by 1 author (J.J.v.D.).

Because the 2/0 and 4/-2 mIP condition were found to have an optimal tradeoff between the number of detected microbleeds and the number of sections, these conditions were selected to assess intra- and inter-rater agreement and the effect of overlap. In this stage of the study, 7T scans of 10 subjects were rated by 4 authors (J.d.B., M.B., J.J.v.D., G.J.B.), 1 of whom rated all scans twice (J.J.v.D.).

The 1.5T scans were processed with 5/0 mIP, in line with previous studies (eg, Gregoire et al<sup>3</sup>). These scans were also rated by the 4 authors (J.d.B., M.B., J.J.v.D., G.J.B.), 1 of whom rated all scans twice (J.J.v.D.).



**Fig 1.** Total number of microbleeds for mIP processing with and without an overlap. The left figure shows results of mIP processing without overlap but with differences in section thickness. The right figure shows the results of processing with overlap. The total number of detected microbleeds (possible and definite) is shown for all subjects, expressed as a percentage of maximum detected microbleeds within subjects.

### Microbleed Rating

For the 7T scans, microbleeds were rated with concomitant on-screen presentation of the first- and second-echo mIP processed images. Ratings were performed by the MARS.<sup>3</sup> Microbleeds were defined as black, round, or ovoid lesions on the first- or second-echo image and distinguished into possible or definite microbleeds.<sup>3</sup> Mimics, like vessels and symmetric calcifications in the basal ganglia and choroid plexus, were excluded.<sup>3</sup> FLAIR or T2-weighted images were used to detect infarcts. Microbleeds were not rated within infarcted brain tissue. We made 2 modifications to the MARS for application on the 7T scans. First, we used no lower size limit for the lesions (2 mm is the lower size limit of MARS). Second, lesions visible on the first-echo image had to be larger on the second-echo image (so-called blooming) to be rated as microbleeds.<sup>2</sup> Before the formal rating, the raters practiced the rating method together on 7T scans of individuals from the SMART study who were not included in the present study. Levels of experience with brain MR imaging rating varied across raters. Nevertheless, on the 1.5T scans intra- and inter-rater agreement was excellent (intrarater: number of definite [ICC, 0.89] and total microbleeds [0.91]; inter-rater agreement of all raters: number of definite [0.95] and total microbleeds [0.91]).

### Ground Truth Ratings

To assess the effect of mIP with an overlap, we saved the precise spatial locations of all identified definite microbleeds on 7T scans of the 10 subjects and used them to establish “ground truth” ratings. Each subject was rated 8 times (ie, for 2 conditions of mIP processing by 4 raters). A lesion on a particular location was labeled as a definite microbleed for the ground truth rating if it had been labeled as such

on at least 5 of the 8 ratings. Lesion locations that had been marked as definite microbleeds on 4 or fewer of the 8 ratings were examined in a consensus meeting with 3 raters (J.d.B., M.B., G.J.B.) and were included or excluded from the ground truth rating on the basis of the majority of votes.

### Statistical Analysis

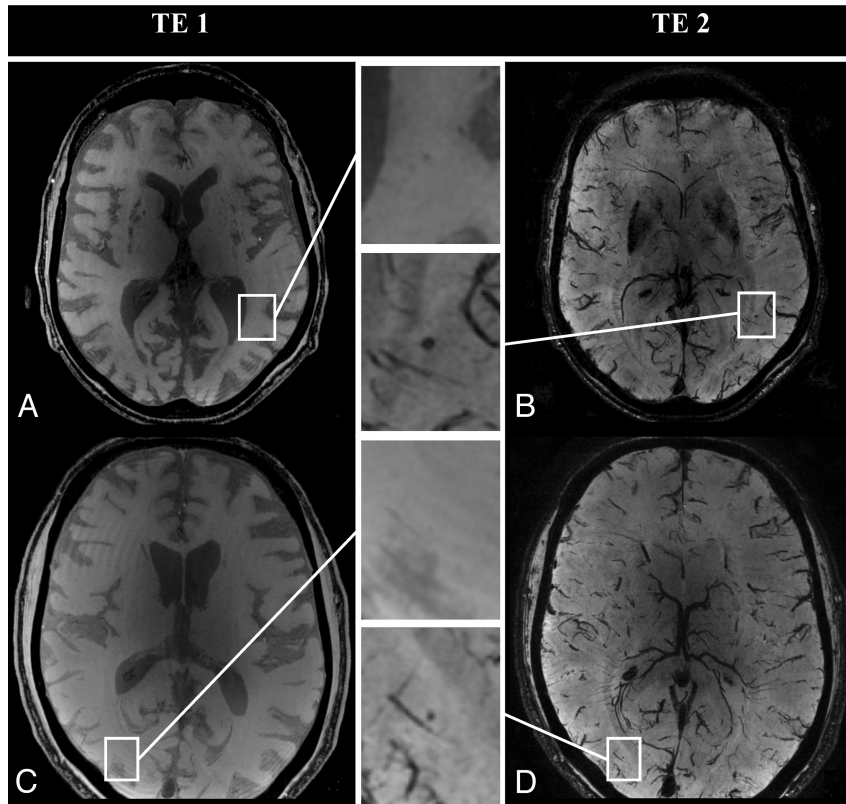
Intra- and inter-rater agreement of the number of rated microbleeds (possible, definite, and total [possible + definite]) were calculated as an ICC for the 2/0 and 4/-2 mIP processed scans of the 10 subjects.

The effect of an overlap in the mIP processing of 7T scans was assessed by comparing 2/0 with 4/-2 mIP processing within the 10 subjects. Individual definite microbleed locations were compared between rated scans of each rater with the ground truth ratings to determine true-positives, false-positives, and false-negatives. These values were used to calculate a sensitivity and SI. The sensitivity and SI were compared between 2/0 and 4/-2 processing.

### Results

#### Different Conditions of mIP Processing

On the scans of the 3 subjects that were used to determine optimal mIP processing conditions, the maximum numbers of detected total microbleeds per subject were 11, 15, and 188. In scans with nonoverlap mIP processing, the proportion of detected microbleeds decreased with increasing section thickness (Fig 1; percentage of maximum detected number of microbleeds averaged for the 3 subjects: 1/0 = 91%, 2/0 = 82%, 3/0 = 74%, 10/0 = 56%). This effect of section thickness was



**Fig 2.** Examples of microbleeds that are easy or hard to detect. This figure illustrates different microbleeds that were classified as definite microbleeds in the ground truth ratings. *A* and *B*, The TE 1 and TE 2 of the T2\*-weighted 7T MR scan with a microbleed that was detected by all raters. The microbleed is seen on both the TE 1 and TE 2 images. *C* and *D*, A microbleed that was only detected by a few raters. This microbleed was only seen on the TE 2 image.

**Visual rating of individual definite microbleed locations compared with the ground truth rating<sup>a</sup>**

|                             | 2/0 mIP Processing |           |           |           |                    | 4/-2 mIP Processing |           |           |           |                    |
|-----------------------------|--------------------|-----------|-----------|-----------|--------------------|---------------------|-----------|-----------|-----------|--------------------|
|                             | Rater 1            | Rater 2   | Rater 3   | Rater 4   | Mean of All Raters | Rater 1             | Rater 2   | Rater 3   | Rater 4   | Mean of All Raters |
| Mean time per subject (min) | 42                 | 18        | 24        | 35        | 30                 | 42                  | 16        | 23        | 34        | 29                 |
| Lobar (sensitivity/SI)      | 0.61/0.63          | 0.23/0.37 | 0.61/0.72 | 0.71/0.76 | 0.54/0.62          | 0.65/0.73           | 0.42/0.59 | 0.52/0.65 | 0.81/0.83 | 0.60/0.70          |
| Deep (sensitivity/SI)       | 1.00/0.89          | 0.75/0.75 | 0.75/0.55 | 0.75/0.40 | 0.81/0.65          | 0.50/0.36           | 0.75/0.75 | 0.50/0.67 | 1.00/0.46 | 0.69/0.56          |
| Total (sensitivity/SI)      | 0.67/0.68          | 0.31/0.46 | 0.64/0.70 | 0.72/0.69 | 0.58/0.63          | 0.61/0.66           | 0.44/0.60 | 0.53/0.67 | 0.83/0.77 | 0.60/0.67          |

<sup>a</sup> Ratings for each rater, which consisted of individual definite microbleed locations on scans with 2/0 and 4/-2 mIP processing, were compared with the ground truth ratings by sensitivity and SI.

less marked in mIP-processed scans with overlap (3/-2 = 95%, 5/-4 = 96%, 4/-2 = 80%, 10/-8 = 80%). mIP processing with 1/0, 3/-2, and 5/-4 resulted in a total of 100 sections; 2/0, 4/-2, and 10/-8 in 50 sections; 3/0 in 33 sections; and 10/0 in 10 sections. More sections increased the rating time: A total of 100 sections resulted in 20–80 minutes rating time per scan; 50 sections, in 20–47 minutes; 33 sections, in 23–35 minutes; and 10 sections, in 7–60 minutes. On the basis of the number of detected microbleeds and number of sections, 2/0 and 4/-2 mIP processing were selected for the second stage of the study.

**Intra- and Inter-Rater Agreement**

Figure 2 illustrates some of the potential difficulties of microbleed detection on 7T MR imaging.

The intrarater agreement for rating the number of microbleeds on 7T scans was good for definite (ICC, mean of 2/0 and

4/-2: 0.73) and total microbleeds (0.74), but poor for possible microbleeds (0.33). The inter-rater agreement for rating the number of microbleeds on 7T scans was moderate for definite microbleeds (0.46), lower for total microbleeds (0.38), and poor for possible microbleeds (0.06).

**Effect of Using an Overlap in mIP Processing**

The ground truth ratings of the 10 subjects included a median number of 3 definite microbleeds (range, 0–7), with a total of 36 definite microbleeds, of which 31 were lobar, 4 were deep, and 1 was cerebellar. The Table presents the ratings of individual definite microbleed locations per rater compared with the ground truth rating. Mean rating times of all raters between scans with 2/0 and 4/-2 mIP processing were comparable (29 minutes per scan on average). For individual definite microbleed locations for each rater compared with the locations in the ground truth ratings, 4/-2 mIP (mean sensitivity/SI of all rat-

ers, 0.60/0.67) had a slightly higher sensitivity and SI than 2/0 mIP (0.58/0.63). Microbleed localization (lobar or deep) only had a limited effect on the reliability of visual detection.

## Discussion

Improvement in the detection of microbleeds is important to further our understanding of this novel marker of cerebral small-vessel disease. With 7T dual-echo T2\*-weighted MR imaging smaller and up to 3 times as many microbleeds can be detected than on 1.5T MR imaging.<sup>2</sup>

In contrast to lower resolution scans, at 7T, MR image processing by means of mIP is required to aid the visual rating and reduce the large number of sections.<sup>2</sup> We showed that scans with mIP processing of 2/0 and 4/−2 showed an optimal balance between the number of detected microbleeds and the number of sections and thus the rating time. Furthermore, detection of microbleeds could benefit from mIP processing with an overlap. Other factors (ie, pulse sequence, sequence parameters, spatial resolution, and the use of susceptibility-weighted imaging) could also influence the reliability of microbleed detection<sup>4</sup> and should be standardized within studies and even between studies to allow comparison of results.

Even under optimal mIP conditions, inter-rater agreement of the visual rating of microbleeds on 7T MR imaging was only moderate and lower than the inter-rater agreement for the same raters at 1.5T. The major source of disagreement between raters was that raters missed microbleeds. This is probably due to the limited size of some of these lesions, susceptibility effects of other structures,<sup>1,4</sup> and the large number of sections for every subject. Disagreement was more marked for possible than for definite microbleeds, and the rating of possible microbleeds on 7T scans proved to be unreliable. The accuracy of the rating of the 1.5T scans fell well within the range of previous studies (eg, Gregoire et al<sup>3</sup>), indicating that

the disagreement was attributable to the properties of the 7T scans rather than to poor performance of the raters.

## Conclusions

7T MR imaging improves cerebral microbleed detection and will further our understanding of the pathophysiology of these lesions. Visual rating of microbleeds at 7T MR imaging should preferably involve multiple trained raters to ensure optimal lesion detection. At present, microbleed detection at 7T MR imaging should, in our view, be primarily used in a research setting. Further studies are needed to establish the clinical relevance of microbleeds on 7T MR imaging. Moreover, rating times need to be reduced to ensure further dissemination of the technique. This could be achieved by automated or semi-automated image analysis methods, which are currently becoming available.<sup>5</sup>

Disclosures: Jeroen de Bresser—*RELATED: Grant:* High Potential grant from Utrecht University. Max A. Viergever—*UNRELATED: Grants/Grants Pending:* Philips Healthcare. Geert Jan Biessels—*RELATED: Grant:* Utrecht University,\* *Comments:* unrestricted grant for my research program. (\*Money paid to the institution.)

## References

1. Conijn MM, Geerlings MI, Luijten PR, et al. **Visualization of cerebral microbleeds with dual-echo T2\*-weighted magnetic resonance imaging at 7.0 T.** *J Magn Reson Imaging* 2010;32:52–59
2. Conijn MM, Geerlings MI, Biessels GJ, et al. **Cerebral microbleeds on MR imaging: comparison between 1.5 and 7T.** *AJNR Am J Neuroradiol* 2011;32:1043–49
3. Gregoire SM, Chaudhary UJ, Brown MM, et al. **The Microbleed Anatomical Rating Scale (MARS): reliability of a tool to map brain microbleeds.** *Neurology* 2009;73:1759–66
4. Greenberg SM, Vernooij MW, Cordonnier C, et al. **Cerebral microbleeds: a guide to detection and interpretation.** *Lancet Neurol* 2009;8:165–74
5. Kuijff HJ, de Bresser J, Geerlings MI, et al. **Efficient detection of cerebral microbleeds on 7.0 T MR images using the radial symmetry transform.** *Neuroimage* 2011 Oct 2. [Epub ahead of print]