

**Are your MRI contrast agents cost-effective?**

Learn more about generic Gadolinium-Based Contrast Agents.



**AJNR**

**Whole-Brain Adaptive 70-kVp Perfusion  
Imaging with Variable and Extended  
Sampling Improves Quality and Consistency  
While Reducing Dose**

I. Corcuera-Solano, A.M. McLellan, A.H. Doshi, P.S. Pawha  
and L.N. Tanenbaum

This information is current as  
of April 10, 2024.

*AJNR Am J Neuroradiol* published online 17 July 2014  
<http://www.ajnr.org/content/early/2014/07/17/ajnr.A4043>

# Whole-Brain Adaptive 70-kVp Perfusion Imaging with Variable and Extended Sampling Improves Quality and Consistency While Reducing Dose

I. Corcuera-Solano, A.M. McLellan, A.H. Doshi, P.S. Pawha, and L.N. Tanenbaum

## ABSTRACT

**BACKGROUND AND PURPOSE:** Despite common use of CTP to assess cerebral hemodynamics in the setting of ischemia, concerns over radiation exposure remain. Our aim was to evaluate the efficacy of an adaptive 70-kVp (peak) whole-brain CTP protocol with variable sampling intervals and extended duration against an established fixed-sampling, limited-period protocol at 80 kVp.

**MATERIALS AND METHODS:** A retrospective analysis of 37 patients with stroke scanned with conventional ( $n = 17$ ) and variant-protocol ( $n = 20$ ) whole-brain CTP was performed. We compared radiation dose, parametric map quality, and consistency of full-contrast circulation capture between a modified 70-kVp protocol, with 20 whole-brain passes at variable sampling intervals over an extended sampling period, and a conventional 80-kVp CTP examination with 24 passes at fixed-sampling intervals and a more limited scanning window. Mann-Whitney  $U$  test analysis was used to compare both protocols.

**RESULTS:** The 70-kVp CTP scan provided superior image quality at a 45% lower CT dose index volume and 13% lower dose-length product/effective dose compared with the conventional 80-kVp scan. With respect to the consistency of contrast-passage capture, 95% of the adaptive, extended protocol continued through the venous return to baseline, compared with only 47% by using the conventional limited-length protocol. Rapid sampling during the critical arterial arrival and washout period was accomplished in nearly 95% with both the variable and fixed-sampling-interval protocols.

**CONCLUSIONS:** Seventy-kilovolt (peak) CTP with variable and extended sampling produces improved image quality at lower radiation doses with greater consistency of full contrast passage capture.

**ABBREVIATIONS:** CTDI<sub>vol</sub> = CT dose index volume; DLP = dose-length product

CT perfusion studies involve repeated dynamic scanning during the passage of contrast to and through the brain. The derived parametric maps of CBF, CBV, and transit times can be integral to the evaluation and management of acute stroke and chronic neurovascular steno-occlusive disease. Despite wide-

spread use, concerns over the potential dangers of high radiation exposure remain,<sup>1,2</sup> particularly with more recent 4D or shuttle whole-brain scanning approaches.

Radiation dose is disproportionately dependent on tube voltage, thus the use of lower kilovolt (peak) values has been the principal strategy for managing exposure in CTP.<sup>3</sup> Additional strategies include reducing the temporal resolution<sup>4-6</sup> and limiting the scan duration.<sup>7</sup> Traditionally, CTP studies have been performed at 80 kVp,<sup>3</sup> the lowest energy setting available on most clinical scanners, with a fixed, limited scanning period (40–60+ seconds) and regular sampling intervals (every 1–4 seconds).<sup>4-6</sup> We evaluated radiation dose, image quality, and contrast cycle capture consistency of a variant protocol for whole-brain CTP using 3 innovations—lower 70 kVp, variable sampling intervals, and longer sampling periods—comparing it with the existing, conventional approach used at our institution. We hypothesized that the new 70-kVp protocol would result in a reduced radiation dose while providing comparable parametric image quality and improved consistency of full contrast cycle capture compared

Received March 19, 2014; accepted after revision May 16.

From the Department of Neuroradiology, Mount Sinai Medical Center, One Gustave L. Levy Place, New York, New York.

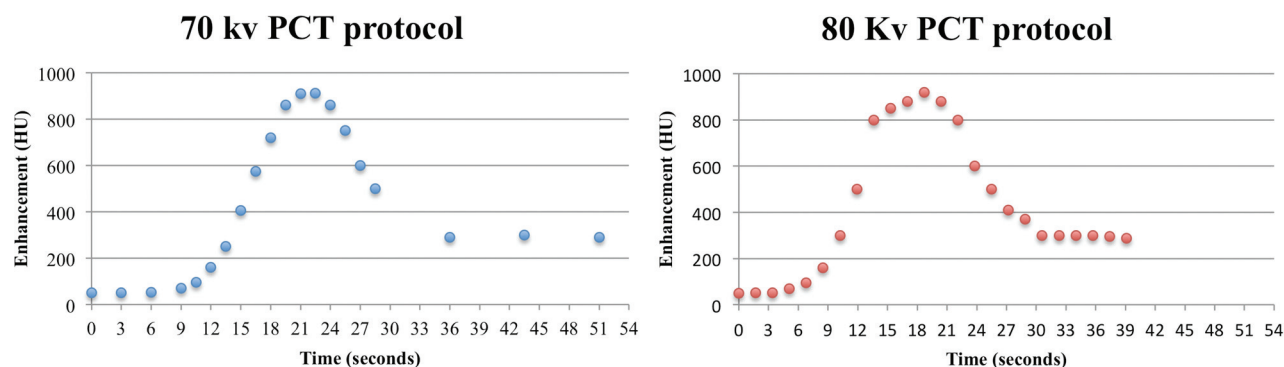
I. Corcuera-Solano and A.M. McLellan contributed equally to this work.

Idoia Corcuera-Solano was supported by a grant from the Spanish foundation Fundación Alfonso Martín Escudero.

Paper previously presented as an electronic exhibit at: Annual Meeting of the European Society of Radiology, March 6–10, 2014; Vienna, Austria; and Annual Meeting of the American Roentgen Ray Society, May 4–9, 2014; San Diego, California; and as an oral presentation at Annual Meeting of the American Society of Neuroradiology and the Foundation of the ASNR Symposium, May 17–22, 2014; Montreal, Quebec, Canada.

Please address correspondence to Lawrence N. Tanenbaum, MD, Mount Sinai Medical Center, Department of Radiology, B1234, One Gustave L. Levy Place, New York, NY 10029; e-mail: nuromri@gmail.com; @nuromri

<http://dx.doi.org/10.3174/ajnr.A4043>



**FIG 1.** Sample middle-brain time-attenuation curves for the 2 CTP protocols.

with conventional approaches. To our knowledge, the use of 70-kVp CTP coupled with variable and extended sampling has not been reported.

## MATERIALS AND METHODS

### Patients

The institutional review board approved this retrospective single-center, Health Insurance Portability and Accountability Act–compliant study, with a waiver of informed consent. Our institutional radiology data base was queried to identify patients with a presumptive diagnosis of stroke who underwent clinically indicated head CTP from January 2013 through December 2013.

### Scanning Technique

In our institution, patients with suspected acute stroke who are candidates for thrombolysis undergo unenhanced CT. When appropriate, CTP examinations then follow on one of our 2 capable scanners. Patients scanned on our AS+ 128 scanner (Siemens, Erlangen, Germany) are evaluated with our 70-kVp adaptive 4D spiral CTP protocol. Patients scanned on our LightSpeed VCT (GE Healthcare, Milwaukee, Wisconsin) scanner have a conventional design, helical shuttle 80-kVp examination. Because of scanner limitations, only the 80-kVp examinations benefited from iterative reconstruction (Adaptive Statistical Iterative Reconstruction level 70). The 70-kVp studies were reconstructed with filtered back-projection. All CTPs are performed by using a contrast bolus of 40 mL of nonionic iodinated contrast media (iopamidol, Isovue 370; Bracco Diagnostics, Princeton, New Jersey) administered via a power injector at a rate of 4 mL/s, followed by a saline flush of 40 mL at a 3-mL/s injection rate. Scanning is initiated 8 seconds after the onset of contrast injection in all cases. In the conventional 80-kVp protocol, 24 whole-brain passes are made at a fixed rate of 1.7 seconds per pass (temporal resolution, 1.7–3.4 seconds in a shuttle mode) for 39 seconds. In the adaptive 70-kVp protocol, 20 passes are performed at the following varied intervals: 3 passes every 3 seconds intended for the prearrival baseline, 13 passes every 1.5 seconds targeting the rise and fall of enhancement, and 3 passes at 7.5-second intervals to complete and extend the temporal sampling window for 51 seconds (Fig 1). Detailed technical parameters of the 2 different CTP examinations are given in Table 1. We routinely extract physiologic, time-resolved CTA from all CTP datasets, avoiding the radiation and contrast needed for an additional dedicated study.

**Table 1: CTP parameters**

	70 kVp	80 kVp
Tube current	150 mAs	80 mAs
Section thickness	5 mm	5 mm
Passes	20 passes	24 passes
Range	144 mm	120 mm
Time per pass	3, 1.5, 7.5 seconds	1.7 seconds
Scan window	51 seconds	39 seconds

### Data Processing

All CTP studies were processed at 5-mm thickness with CT Perfusion 4D on an Advantage Workstation 4.6 (GE Healthcare). Arterial and venous input functions were automatically selected by the perfusion software (Perfusion 4D; GE Healthcare) and varied by case, though the algorithm typically defaults to the proximal internal carotid or basilar artery and the sigmoid sinus. Fully automated processing was used unless visual validation by a neuroradiologist suggested the need for semiautomated processing after correction of the arterial and/or venous input over the basilar or internal carotid artery and sigmoid sinus, respectively.

### Image Quality Analysis

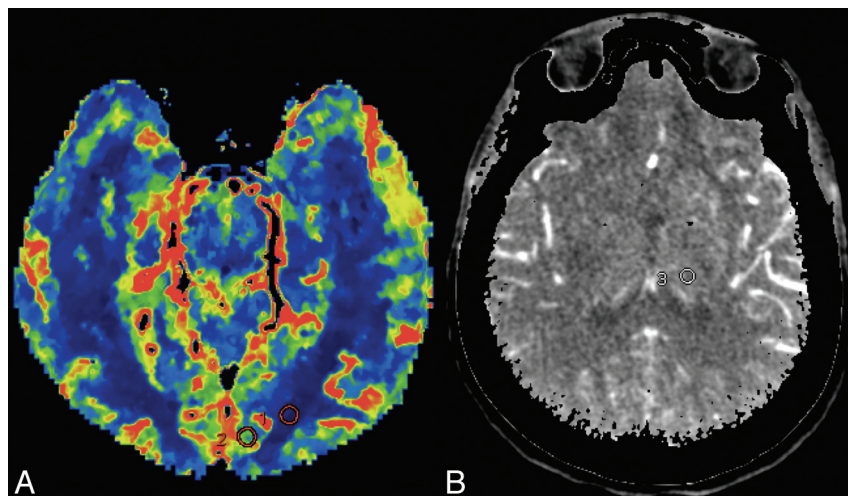
All CTP studies were reviewed as saved DICOM datasets on the Advantage 4.6 Workstation.

For quantitative analysis of the parametric images, identical single regions of interest measuring 5 mm<sup>2</sup> were placed in the WM and GM of the medial left occipital lobe on the CBF, CBV, and time-to-maximum maps for both CTP protocols. The medial occipital lobe was chosen because it is less likely to be involved in ischemia than the larger MCA territory. If the left posterior cerebral territory was involved, the region of interest was placed on the contralateral normal side. In addition, single ROI measurements were made on source images at the level of the left thalamus at peak arterial and venous enhancement (Fig 2).

We acquired the following quantitative parameters:

- 1) Signal (*S*), defined as the mean CT attenuation values in Hounsfield units.
- 2) Image noise (*IN*), defined as the SD of CT attenuation values.
- 3) SNR = (Mean WM Region of Interest) / (SD WM Region of Interest) or (*S*) / (*IN*).

Additionally, 3 radiologists with 6, 9, and 20+ years of neuro-radiology experience independently performed a qualitative as-



**FIG 2.** A, Parametric map showing placement of regions of interest in the WM and GM of the left medial occipital lobe. B, The region of interest is measured at the peak arterial phase over the left thalamus.

**Table 2: Quantitative analysis<sup>a</sup>**

	70 kVp	80 kVp	P Value
CBF			
WM			
Mean	5.47	8.76	.05
SD	2.26	4.47	.35
SNR	2.81	3.20	.66
GM			
Mean	40.03	40.76	.87
SD	14.84	16.94	.94
SNR	4.38	3.95	.92
CBV			
WM			
Mean	1.50	0.95	.44
SD	0.41	0.35	.21
SNR	3.15	4.97	.07
GM			
Mean	4.88	3.49	.75
SD	1.45	1.08	.21
SNR	5.34	6.53	.18
Tmax			
WM			
Mean	7.81	6.52	.10
SD	1.72	1.63	.47
SNR	6.22	7.08	.96
GM			
Mean	3.94	4.51	.13
SD	0.68	1.03	.31
SNR	6.82	6.72	.82
Arterial max			
Thalamus			
Mean	59.71	50.25	.0005
SD	11.96	11.34	.426
SNR	6.43	4.69	.3316
Venous max			
Thalamus			
Mean	56.72	48.68	.0032
SD	11.67	10.91	.3811
SNR	5.11	4.62	.4738

**Note:**—max indicates maximum; Tmax, time-to-maximum.

<sup>a</sup> Data are presented as mean, SD, and SNR.

assessment of the parametric image sets blinded to the acquisition protocol. Readers were asked to rate overall image quality and gray matter–white matter differentiation of the CBV, CBF, and a variety of transit times maps, including time-to-maximum, time-

to-peak, first moment (impulse residual function at the zero time point), and mean transit time on a 3-point scale: 3 being ideal, 2 being less than ideal, and 1 being nondiagnostic. Window and level settings were standardized for initial review, but each reader was also allowed to vary the settings. Image-quality scores were averaged across readers for analysis and are presented as mean value  $\pm$  SD.

### Time-Attenuation Curve Analysis

A board-certified radiologist with 1 year of neuroradiology experience analyzed and compared the first-pass perfusion time-attenuation curves to assess the rate at which each protocol imaged the desired portions of the enhancement cycle as intended: capture of the precontrast arrival baseline, fast sampling from the arterial

contrast arrival through the midportion of the downslope back to baseline, and continued sampling through the venous return to baseline.

### Radiation Dose Assessment

Mean doses of the 2 protocols were recorded and compared. The CT dose index volume (CTDI<sub>vol</sub>) in milligrays and the dose-length product (DLP) were extracted from the scan dose page. The effective dose in millisieverts was estimated by multiplying the DLP by a constant region-specific conversion coefficient of 0.0023 mSv / (mGy·cm).<sup>8</sup> The percentage reduction when comparing the mean CTDI<sub>vol</sub> used in examinations with 80 kVp with the mean CTDI<sub>vol</sub> of 70 kVp was calculated according to the following formula:  $100\% - (\text{CTDI}_{\text{vol}} 70 \text{ kVp} / \text{CTDI}_{\text{vol}} 80 \text{ kVp}) \times 100$ . The same analysis was performed with the DLP and effective dose.

### Statistical Analysis

Statistical analyses were performed by using the commercial GraphPad Prism, Version 5.00 for Mac OS X (GraphPad Software, San Diego California). Radiation variables were compared by using the Student *t* test for unpaired samples. The Kendall coefficient of concordance was calculated to evaluate the degree of consensus among the 3 observers.<sup>9</sup> The Mann-Whitney *U* test was applied to compare image-quality results between the 70-kVp and 80-kVp CTP protocols. Numeric data were expressed as mean  $\pm$  SD. *P* < .05 was a statistically significant result.

### RESULTS

Thirty-seven patients (15 men and 22 women), with a mean age of 66 years (range, 48–92 years) and a presumptive diagnosis of stroke, underwent brain CTP in our institution. Of those, 17 cases were performed with the conventional 80-kVp CTP protocol (4 men and 13 women; mean age, 64 years), and 20, with the adaptive 70-kVp CTP (9 men and 11 women; mean age, 66 years). The average NIHSS score was 9.35 for the patients scanned with the 70-kVp and 12.06 for those scanned with the 80-kVp protocol.



The overall incidence of stroke was 70.3% (26/37), with 88.5% (23/26) involving the anterior circulation and 11.5% (3/26), the posterior circulation. Fourteen stroke cases were diagnosed by using 70-kVp protocol: Eleven were anterior circulation strokes (5 left MCA, 1 left ICA, and 5 right MCA), and 3 were posterior strokes, involving the pons, right middle cerebellar peduncle, and bilateral cerebellum. Twelve stroke cases were diagnosed with the 80-kVp protocol: All were anterior strokes, with 7 left MCA, 1 left ICA, 2 right MCA, 1 right anterior cerebral artery/MCA border-zone, and 1 right anterior choroidal artery.

The time from symptom onset to scanning ranged from 25 minutes to 5 hours in the 70-kVp group and 50 minutes to 4 hours at 80 kVp. A stroke alert response time of <20 minutes to CT was maintained in all patients who presented on arrival to the emergency department.

**Table 3: Qualitative analysis of overall quality and gray-white matter differentiation in 80-kVp and 70-kVp whole-brain CTP<sup>a</sup>**

	70 kVp	80 kVp	P Value
Overall quality			
CBF	2.95 ± 0.167	2.81 ± 2.84	.0459
CBV	2.95 ± 0.167	2.76 ± 0.305	.0173
TT	2.89 ± 0.224	2.69 ± 0.276	.0113
GM-WM differentiation			
CBF	2.91 ± 0.187	2.83 ± 0.314	.5598
CBV	2.93 ± 0.178	2.70 ± 0.347	.0278
TT	2.86 ± 0.231	2.69 ± 0.276	.0630

**Note:**—TT indicates transit time.

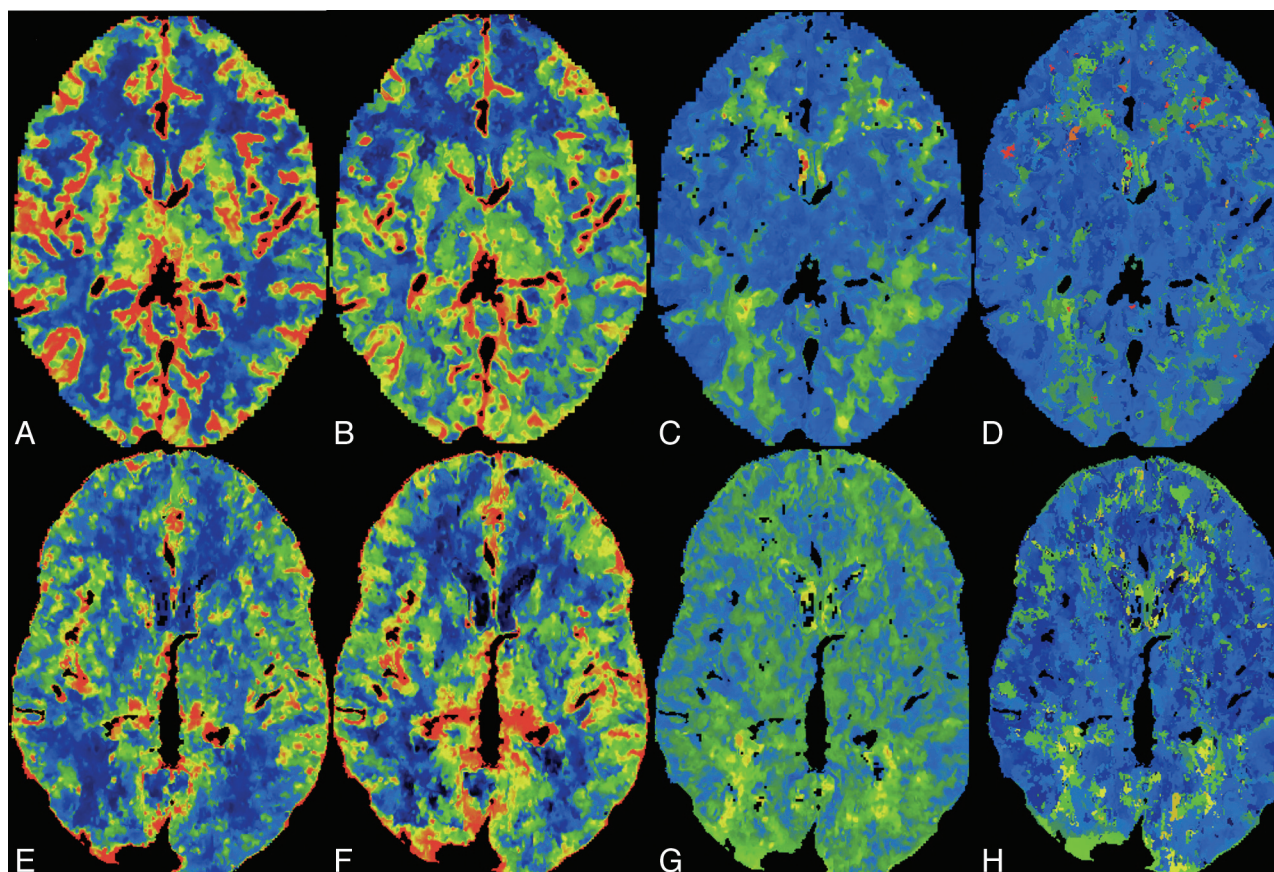
<sup>a</sup> Data are presented as means and SD.

### Image Quality

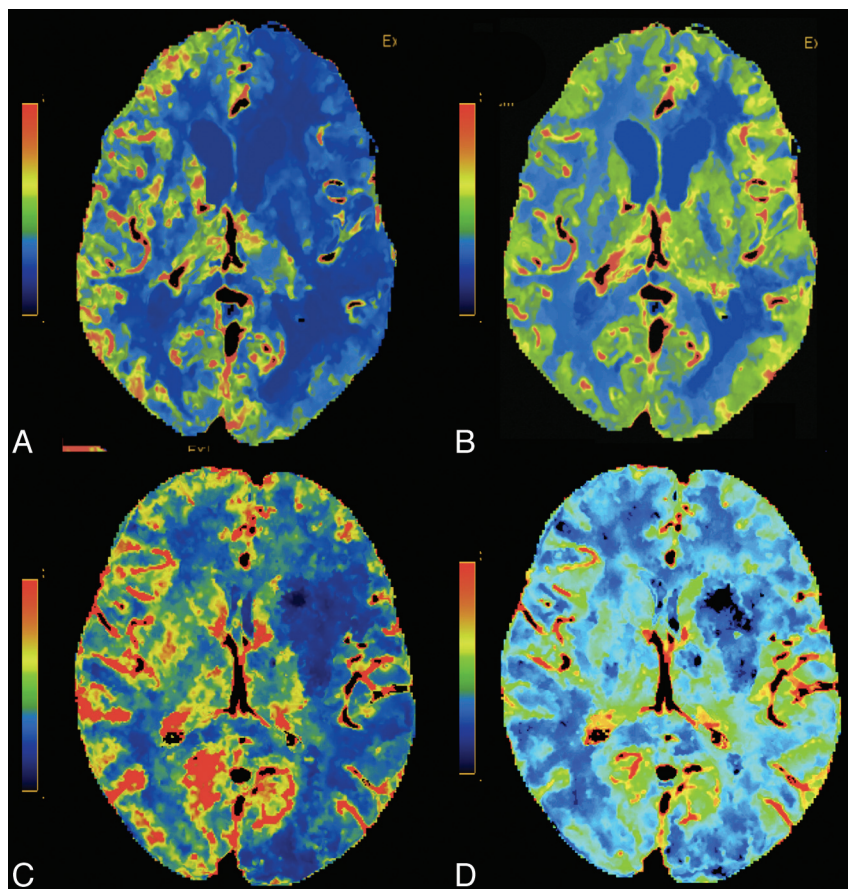
No significant quantitative differences were found on parametric maps between protocols. Source image contrast enhancement was significantly higher at 70 kVp than with 80 kVp, though no significant differences in noise or SNR were found. Quantitative data are summarized in Table 2. The interobserver agreement in the qualitative assessment of parametric maps was good (Kendall coefficient, 0.46).<sup>9</sup> Overall image quality was significantly better by using the 70-kVp CTP protocol for all 3 parameters: CBF ( $P = .02$ ), CBV ( $P = .04$ ), and transit times ( $P = .01$ ), compared with 80 kVp. Scores of the 70-kVp and 80-kVp CTP protocols for GM-WM differentiation were comparable in CBF and transit times, while CBV using 70-kVp CTP was associated with significantly better GM-WM differentiation ( $P = .02$ ) (Table 3 and Figs 3 and 4).

### Time-Attenuation Curves

Time-attenuation curve analysis revealed that by using the adaptively sampled longer 70-kVp CTP technique (sampling extended to 51 seconds), 95% (19/20) of the studies captured the venous return to baseline, compared with only 47% (8/17) of the studies scanned by using the fixed-interval limited-length 80-kVp protocol (39 seconds). Rapid sampling during the critical arterial arrival and washout period was comparable in both protocols, captured at 95% (19/20) with the 70-kVp adaptive protocol and at 94% (16/17) with the 80-kVp fixed protocol.



**FIG 3.** Normal-sample CTP datasets from the 70-kVp protocol: CBF (A), CBV (B), time-to-maximum (C), TTP (D). From the 80-kVp protocol: CBF (E), CBV (F), time-to-maximum (G), TTP (H).



**FIG 4.** Two different patients with left MCA ischemia. CBF (A) and CBV (B) at 70-kVp and CBF (C) and CBV (D) at 80-kVp CTP. Note the decreased CBF and preserved CBV.

**Table 4: CTDI<sub>vol</sub> and DLP/ED values for whole-brain CTP examinations at 80 kVp and 70 kVp with different scanners**

	70 kVp	80 kVp	Percentage Reduction
			100% - (70 kVp/80 kVp) × 100
CTDI <sub>vol</sub> (mGy)	105	192	45.31
DLP (mGy·cm)	1588	1831	13.27
ED (mSv)	3.65	4.21	13.27

**Note:**—ED indicates effective dose.

### Radiation Dose

Differences in mean CTDI<sub>vol</sub>, DLP, and effective dose between groups were statistically significant (all  $P < .01$ ). At 70 kVp, there was a 45.31% reduction of the mean CTDI<sub>vol</sub> (105 mGy) compared with 80 kVp (192 mGy). Despite an approximately 12-second wider scanning window and greater anatomic coverage (144 versus 120 mm), there was a 13.27% reduction of the mean DLP (1588 mGy·cm) and of the mean effective dose (3.65 mSv) when using the 70-kVp protocol compared with the 1831 mGy·cm and 4.21 mSv at 80 kVp. Table 4 summarizes the radiation dose results.

### DISCUSSION

In this study, we evaluated the efficacy of a 70-kVp whole-brain CTP protocol with variable sampling intervals and extended sampling against our established fixed-sampling, limited-period protocol at 80 kVp. Our protocol goals included reduced dose, matched or superior image quality, and more consistent contrast-

passage capture. To the best of our knowledge, our protocol is an approach that has not yet been reported.

Several methods have been proposed to limit the radiation dose in CTP, including reducing the tube voltage,<sup>3,10,11</sup> lowering the tube current,<sup>10</sup> dropping the temporal resolution,<sup>4-6</sup> and shortening the scan duration.<sup>7</sup> Reducing the tube voltage has a disproportionate effect on dose (eg, there is a 5-fold dose reduction in shifting from 140 to 80 kVp).<sup>12</sup> Wintermark et al<sup>3</sup> demonstrated that moving to 80 kVp from 120 kVp both reduced radiation dose, reporting a CTDI<sub>vol</sub> of 291 mGy, and increased the effectiveness of contrast enhancement in CTP. At present, the widely practiced standard for CTP has been 80 kVp at 200 mAs or less.<sup>3,13</sup> Our study used 70 kVp, a setting available on many clinical scanners, and 150 mAs, resulting in a CTDI<sub>vol</sub> of 105 mGy, 63% lower than the 80-kVp protocol used in the study of Wintermark et al.<sup>3</sup> The use of even lower kilovolt (peak) further enhances the attenuation of contrast because the 70-kVp beam energy even more closely approximates the iodine k-edge (33.2 KeV)<sup>12</sup>. The net result is a lower net dose per whole-brain pass.

Another approach to radiation dose limitation is the use of wider sampling intervals. Conventional CTP studies use regular sampling intervals for a fixed period with length limited by dose concerns. The optimal sampling rate remains controversial. Wintermark et al<sup>4</sup> found that a sampling interval of >1 second could be used without altering the quantitative accuracy of CTP and recommended a sampling interval of 3 seconds over 42 seconds if a contrast bolus of 40 mL with an injection rate of 4 mL/s is used. Wiesmann et al<sup>14</sup> also stated that temporal resolution could be reduced to 3 seconds without significant compromise in image quality. In a more recent study, Shankar et al<sup>15</sup> suggested the use of a temporal resolution of up to 4 seconds for whole-brain CTP. However, other groups concluded that sampling intervals longer than 1 second yielded significantly poorer depiction of ischemic areas.<sup>5,6,16</sup>

Traditional fixed-sampling approaches have a uniform scanning rate over the entire CTP acquisition. Because certain portions of the contrast passage are likely less sensitive to sampling frequency, such as the pre-enhancement baseline and the downward slope toward the return to and through baseline, reducing sampling rates during these segments is appealing. The “omitted” samples can be traded for dose reduction or for higher temporal resolution during key segments of arterial tissue passage. Variable sampling for CTP has been reported by investigators working with wide 320-channel detector systems with favorable results.<sup>15</sup> To date, variable intervals have yet to be investigated on the much



more commonly used conventional 64-channel detector systems, despite wide clinical availability.

Overall scanning time can also be reduced in the interest of dose control. With fixed-sampling, the dose is directly proportional to the scanning period, which encourages shorter scans. Shorter scan time increases the risk that due to variability in cardiac output, a number of examinations may not continue through the venous return to baseline; this difference challenges the calculation of parametric maps based on deconvolution principles.<sup>17,18</sup> Longer sampling periods provide greater consistency of capture of the full contrast cycle from arterial arrival through venous return over a broad range of cardiac outputs. Adaptive asymmetric sampling intervals permit extended scan windows with dose neutrality because scans ordinarily taken at close intervals during before, and after arterial passage are traded for those at wide intervals at the end of the scanning period; the trading affords protection against premature termination. With a variable sampling rate, dose is independent of the length of the scanning window and instead is related to the total number of samples.

The classic CTP protocol described by Wintermark et al<sup>14</sup> had only a 40-second scanning window, starting 7 seconds after the contrast injection, similar to the 39-second and 8-second delay for the 24 fixed-rate whole-brain passes of our standard 80-kVp examination. In the variable-rate 70-kVp protocol, the scan window for 20 whole-brain passes was extended to 51 seconds. Analysis of the time-attenuation curve revealed that when scanning with the wider CTP window, nearly all of the studies continued through the venous return to baseline, while only the half of the studies using the limited-length protocol did. Discovery of this failure rate provoked a subsequent change in our clinical 80-kVp protocol, with the sampling time now extended to 43 seconds at the cost of a modest 10% increase in dose.

Previous studies using whole-brain CTP imaging with fixed-sampling rates reported radiation doses of 7.6 mSv,<sup>19</sup> 4.56 mSv,<sup>20</sup> and 4.6 mSv,<sup>21</sup> depending on the protocol. With our 20 whole-brain passes at 70 kVp, we achieved a considerable reduction of the effective dose to 3.65 mSv. Despite a 13% reduction in the effective dose compared with our standard 80-kVp protocol, overall quality was rated significantly better in the 70-kVp protocol and GM-WM differentiation was similar in both the quantitative and qualitative analyses.

We acknowledge several limitations in our study. The retrospective study design and small sample size may have introduced sampling errors or other dataset biases and require a confirmation of our findings in a prospective trial and a larger population. In addition, we compared studies between scanners from different manufacturers with different acquisition methods. We are unable to exclude the possible influence of different technical specifications such as x-ray generator/tube, detection system, and reconstruction algorithm on image quality and radiation dose. Parameters such as z-axis coverage of each acquisition, detector configuration, and the use of shuttle mode are slightly different between scanner models. Finally, while all the parametric maps were processed with a form of 4D noise reduction, because of scanner limitations, the 70-kVp datasets did not benefit from iterative reconstruction as did the CTP studies at 80 kVp; this difference diminished the impact of protocol variation on image

quality and possible dose reduction. A future study might seek to validate our conclusions on a single scanner.

## CONCLUSIONS

Whole-brain adaptive perfusion imaging at 70 kVp produces significant improvement in image quality compared with traditional 80-kVp acquisitions at lower radiation doses while providing greater consistency of full-contrast transit capture.

Disclosures: Idoia Corcuera-Solano—UNRELATED: Grant: Fundación Alfonso Martín Escudero, Comments: The foundation paid my salary as a research fellow in Mount Sinai when I was conducting research for this article. Lawrence N. Tanenbaum—UNRELATED: Payment for Lectures (including service on Speakers Bureaus): Siemens, GE Healthcare.

## REFERENCES

1. Ringelstein A, Lechel U, Fahrendorf DM, et al. **Radiation exposure in perfusion CT of the brain.** *J Comput Assist Tomogr* 2014;38:25–28
2. Imanishi Y, Fukui A, Niimi H, et al. **Radiation-induced temporary hair loss as a radiation damage only occurring in patients who had the combination of MDCT and DSA.** *Eur Radiol* 2005;15:41–46
3. Wintermark M, Maeder P, Verdun FR, et al. **Using 80 kVp versus 120 kVp in perfusion CT measurement of regional cerebral blood flow.** *AJNR Am J Neuroradiol* 2000;21:1881–84
4. Wintermark M, Smith WS, Ko NU, et al. **Dynamic perfusion CT: optimizing the temporal resolution and contrast volume for calculation of perfusion CT parameters in stroke patients.** *AJNR Am J Neuroradiol* 2004;25:720–29
5. Kämenä A, Streitharth F, Grieser C, et al. **Dynamic perfusion CT: optimizing the temporal resolution for the calculation of perfusion CT parameters in stroke patients.** *Eur J Radiol* 2007;64:111–18
6. Abels B, Klotz E, Tomandl BF, et al. **CT perfusion in acute ischemic stroke: a comparison of 2-second and 1-second temporal resolution.** *AJNR Am J Neuroradiol* 2011;32:1632–39
7. Hirata M, Sugawara Y, Murase K, et al. **Evaluation of optimal scan duration and end time in cerebral CT perfusion study.** *Radiat Med* 2005;23:351–63
8. Bogartz G, Golding SJ, Jurik AG, et al. **European Guidelines for Multislice Computed Tomography.** 2004; [http://w3.tue.nl/fileadmin/sbd/Documenten/Leergang/BSM/European\\_Guidelines\\_Quality\\_Criteria\\_Computed\\_Tomography\\_Eur\\_16252.pdf](http://w3.tue.nl/fileadmin/sbd/Documenten/Leergang/BSM/European_Guidelines_Quality_Criteria_Computed_Tomography_Eur_16252.pdf) Accessed February 19, 2014
9. Siegel S, Castellan JN. *Nonparametric Statistics for the Behavioral Sciences.* New York: McGraw-Hill; 1988
10. Hirata M, Sugawara Y, Fukutomi Y, et al. **Measurement of radiation dose in cerebral CT perfusion study.** *Radiat Med* 2005;23:97–103
11. Cohnen M, Fischer H, Hamacher J, et al. **CT of the head by use of reduced current and kilovoltage: relationship between image quality and dose reduction.** *AJNR Am J Neuroradiol* 2000;21:1654–60
12. Huda W, Lieberman KA, Chang J, et al. **Patient size and x-ray technique factors in head computed tomography examinations. II. Image quality.** *Med Phys* 2004;31:595–601
13. Wintermark M, Lev MH. **FDA investigates the safety of brain perfusion CT.** *AJNR Am J Neuroradiol* 2010;31:2–3
14. Wiesmann M, Berg S, Bohner G, et al. **Dose reduction in dynamic perfusion CT of the brain: effects of the scan frequency on measurements of cerebral blood flow, cerebral blood volume, and mean transit time.** *Eur Radiol* 2008;18:2967–74
15. Shankar JJ, Lum C, Sharma M. **Whole-brain perfusion imaging with 320-MDCT scanner: reducing radiation dose by increasing sampling interval.** *AJR Am J Roentgenol* 2010;195:1183–86
16. Kloska SP, Fischer T, Sauerland C, et al. **Increasing sampling interval in cerebral perfusion CT: limitation for the maximum slope model.** *Acad Radiol* 2010;17:61–66
17. Konostas AA, Goldmakher GV, Lee TY, et al. **Theoretic basis and tech-**

- nical implementations of CT perfusion in acute ischemic stroke. **Part 1: Theoretic basis.** *AJNR Am J Neuroradiol* 2009;30:662–68
18. Fieselmann A, Kowarschik M, Ganguly A, et al. **Deconvolution-based CT and MR brain perfusion measurement: theoretical model revisited and practical implementation details.** *Int J Biomed Imaging* 2011;2011:467563
  19. Page M, Nandurkar D, Crossett MP, et al. **Comparison of 4 cm z-axis and 16 cm z-axis multidetector CT perfusion.** *Eur Radiol* 2010;20:1508–14
  20. Diekmann S, Siebert E, Juran R, et al. **Dose exposure of patients undergoing comprehensive stroke imaging by multidetector-row CT: comparison of 320-detector row and 64-detector row CT scanners.** *AJNR Am J Neuroradiol* 2010;31:1003–09
  21. Wintermark M, Maeder P, Thiran JP, et al. **Quantitative assessment of regional cerebral blood flows by perfusion CT studies at low injection rates: a critical review of the underlying theoretical models.** *Eur Radiol* 2001;11:1220–30