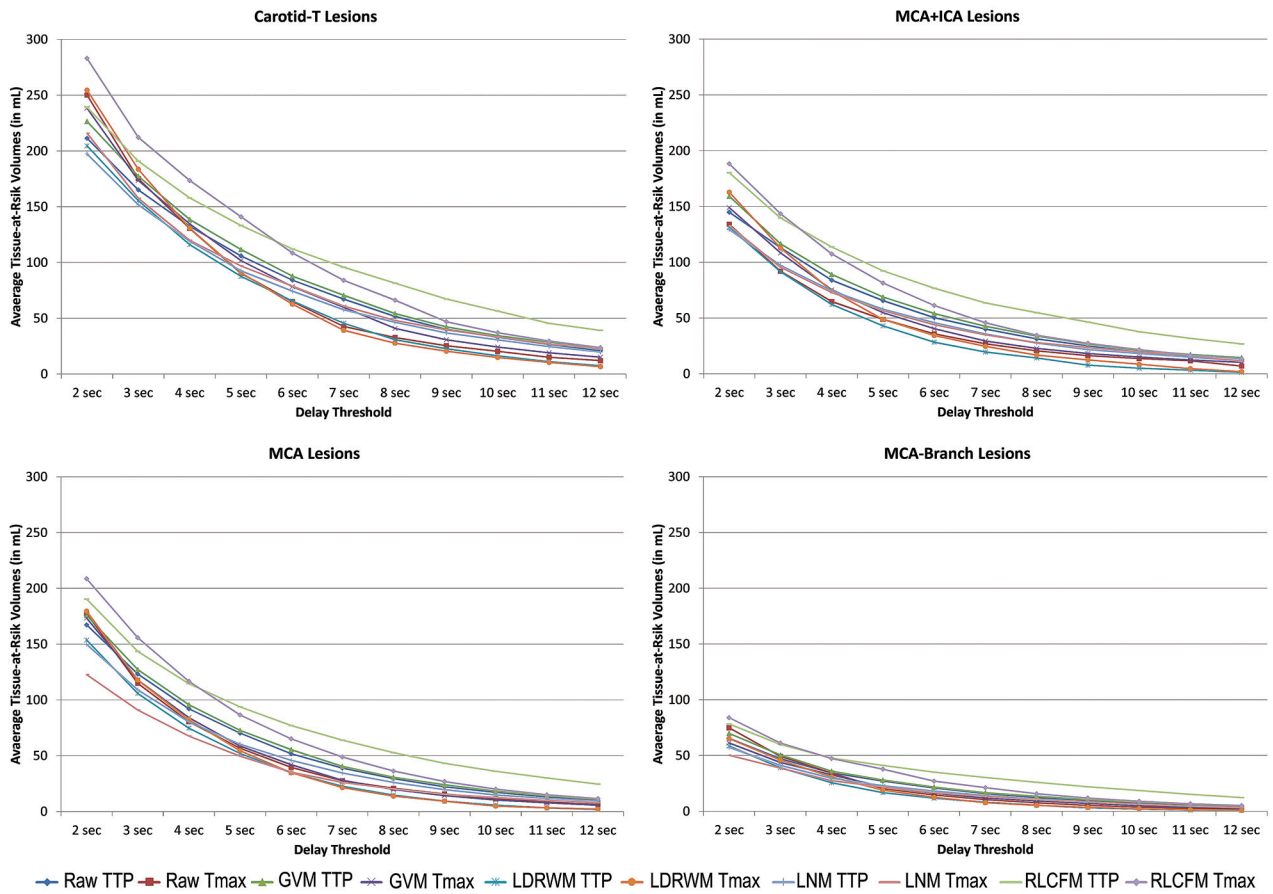
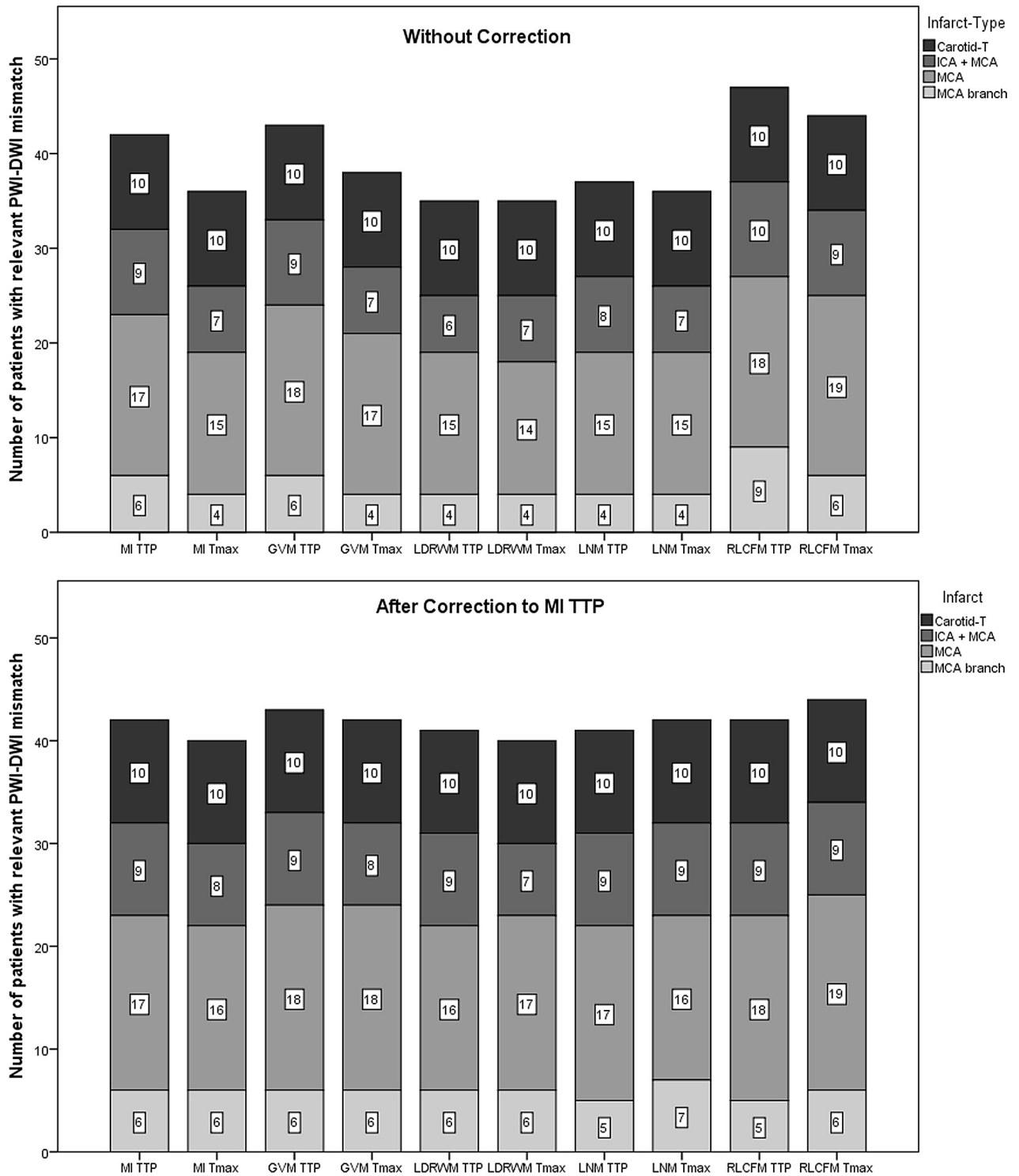


ON-LINE FIG 1. Average PWI-DWI mismatch ratios determined by the different TTP/Tmax estimation methods stratified for occlusion type.



ON-LINE FIG 2. Average tissue-at-risk volumes determined by the different TTP/Tmax estimation methods stratified for occlusion type.



ON-LINE FIG 3. Number of patients with a relevant PWI-DWI mismatch before (top) and after correction to the model-independent TTP estimation technique (bottom). MI indicates model independent.

On line-Table: Parameters for the correction formulas for intermodel adaption (top right) and associated nonlogarithmized standard errors σ (bottom left)

$V_R \setminus V_T$	Raw TTP	Raw Tmax	GVM TTP	GVM Tmax	LDRWM TTP	LDRWM Tmax	LNМ TTP	LNМ Tmax	RLCFM TTP	RLCFM Tmax
Raw TTP		A = 1.154 B = 0.797 C = -0.031 σ = 3.570	A = 0.021 B = 0.989 C = -0.008 σ = 0.850	A = 1.154 B = 0.797 C = -0.041 σ = 3.350	A = 1.505 B = 0.721 C = -0.027 σ = 2.750	A = 1.270 B = 0.746 C = -0.007 σ = 3.749	A = 0.563 B = 0.931 C = -0.029 σ = 1.461	A = 1.152 B = 0.849 C = -0.062 σ = 3.601	A = 0.266 B = 0.951 C = -0.095 σ = 2.753	A = 0.345 B = 0.891 C = -0.028 σ = 3.489
Raw Tmax	A = 0.401 B = 0.918 C = -0.071 σ = 4.730		A = 0.444 B = 0.904 C = -0.079 σ = 4.464	A = 0.551 B = 0.899 C = -0.048 σ = 2.676	A = 0.852 B = 0.830 C = -0.025 σ = 3.980	A = 0.245 B = 0.918 C = 0.023 σ = 2.821	A = 0.438 B = 0.945 C = -0.068 σ = 4.677	A = 0.802 B = 0.907 C = -0.087 σ = 4.234	A = 1.132 B = 0.784 C = -0.180 σ = 6.513	A = 0.595 B = 0.838 C = -0.087 σ = 3.347
GVM TTP	A = 0.056 B = 0.996 C = 0.003 σ = 0.887	A = 1.220 B = 0.792 C = -0.029 σ = 3.591		A = 1.184 B = 0.798 C = -0.036 σ = 3.357	A = 1.568 B = 0.717 C = -0.025 σ = 2.827	A = 1.345 B = 0.739 C = -0.006 σ = 3.795	A = 0.595 B = 0.932 C = -0.024 σ = 1.644	A = 1.209 B = 0.845 C = -0.059 σ = 3.730	A = 1.348 B = 0.750 C = -0.003 σ = 2.743	A = 0.401 B = 0.973 C = -0.025 σ = 4.536
GVM Tmax	A = 0.096 B = 0.973 C = -0.041 σ = 4.298	A = 0.274 B = 0.950 C = -0.007 σ = 2.569	A = 0.100 B = 0.966 C = -0.048 σ = 4.039		A = 0.838 B = 0.833 C = -0.013 σ = 3.750	A = 0.086 B = 0.946 C = 0.046 σ = 1.840	A = 0.260 B = 0.979 C = -0.046 σ = 4.275	A = 0.574 B = 0.952 C = -0.062 σ = 3.220	A = 2.527 B = 0.545 C = -0.049 σ = 4.613	A = 1.343 B = 0.815 C = -0.049 σ = 2.662
LDRWM TTP	A = 1.083 B = 0.809 C = -0.152 σ = 2.896	A = 1.154 B = 0.804 C = -0.119 σ = 2.985	A = 1.115 B = 0.797 C = -0.159 σ = 2.774	A = 1.382 B = 0.762 C = -0.143 σ = 2.918		A = 0.924 B = 0.813 C = -0.068 σ = 2.898	A = 1.220 B = 0.813 C = -0.156 σ = 2.984	A = 1.682 B = 0.752 C = -0.182 σ = 3.715	A = 3.152 B = 0.424 C = -0.069 σ = 4.464	A = 2.131 B = 0.660 C = -0.064 σ = 5.065
LDRWM Tmax	A = 0.997 B = 0.849 C = -0.152 σ = 5.471	A = 0.772 B = 0.898 C = -0.096 σ = 3.001	A = 1.04 B = 0.836 C = -0.159 σ = 5.190	A = 0.923 B = 0.871 C = -0.116 σ = 2.056	A = 1.08 B = 0.829 C = -0.084 σ = 4.105		A = 1.030 B = 0.874 C = -0.149 σ = 5.465	A = 1.324 B = 0.848 C = -0.164 σ = 4.343	A = 2.978 B = 0.444 C = -0.055 σ = 5.110	A = 1.551 B = 0.747 C = -0.018 σ = 3.287
LNМ TTP	A = -0.032 B = 0.970 C = -0.004 σ = 1.437	A = 0.770 B = 0.831 C = -0.012 σ = 3.467	A = -0.036 B = 0.964 C = -0.009 σ = 1.528	A = 0.892 B = 0.809 C = -0.030 σ = 3.266	A = 1.228 B = 0.736 C = -0.014 σ = 2.754	A = 0.877 B = 0.780 C = 0.014 σ = 3.656		A = 0.770 B = 0.885 C = -0.044 σ = 3.372	A = 1.819 B = 0.694 C = -0.022 σ = 2.967	A = 1.051 B = 0.893 C = -0.052 σ = 5.046
LNМ Tmax	A = -0.022 B = 0.935 C = -0.007 σ = 4.064	A = 0.375 B = 0.871 C = 0.010 σ = 3.597	A = 0.008 B = 0.923 C = -0.015 σ = 3.961	A = 0.408 B = 0.865 C = -0.002 σ = 2.881	A = 1.032 B = 0.738 C = -0.006 σ = 4.258	A = 0.406 B = 0.832 C = 0.044 σ = 3.359	A = 0.010 B = 0.964 C = -0.004 σ = 3.878		A = 2.467 B = 0.592 C = -0.060 σ = 4.680	A = 1.501 B = 0.837 C = -0.077 σ = 4.098
RLCFM TTP	A = 1.402 B = 0.745 C = -0.001 σ = 2.815	A = 2.659 B = 0.521 C = -0.052 σ = 4.952	A = 0.320 B = 0.901 C = -0.018 σ = 2.885	A = 0.169 B = 0.912 C = -0.051 σ = 5.915	A = 1.607 B = 0.678 C = -0.187 σ = 4.680	A = 1.093 B = 0.790 C = -0.162 σ = 7.466	A = 0.466 B = 0.835 C = -0.038 σ = 2.782	A = 0.183 B = 0.853 C = -0.024 σ = 5.025		A = 1.363 B = 0.715 C = -0.003 σ = 4.411
RLCFM Tmax	A = 0.460 B = 0.968 C = -0.022 σ = 4.824	A = 1.458 B = 0.794 C = -0.044 σ = 3.573	A = 0.229 B = 0.965 C = -0.087 σ = 3.502	A = 0.707 B = 0.861 C = -0.149 σ = 2.430	A = 2.035 B = 0.635 C = -0.262 σ = 3.621	A = 1.869 B = 0.690 C = -0.261 σ = 3.374	A = 0.379 B = 0.894 C = -0.102 σ = 3.575	A = 0.537 B = 0.833 C = -0.110 σ = 3.341	A = 0.315 B = 0.995 C = -0.095 σ = 6.166	

Note:— V_T , indicates template volume; V_R , reference volume.