

On-line Table 1: Six scanning instruments detailed according to in- or outpatient population, field strength (T), number of scans performed, matrix size and NEX for axial/sagittal images, HIF and AMF/pt, and % SL

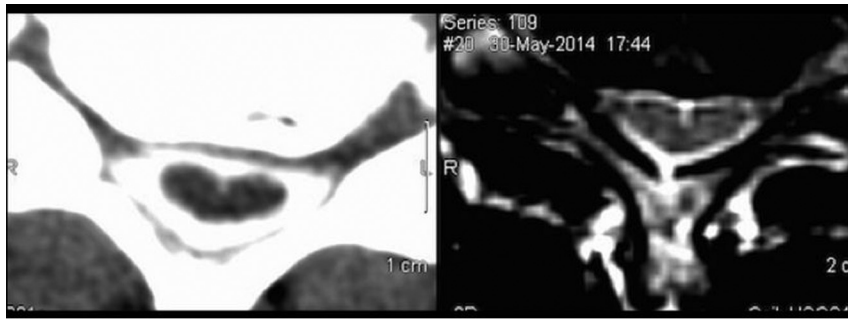
T	No.	Axial Matrix/NEX	Sagittal Matrix/NEX	HIF/Pt.	AMF/Pt.	% SL
Outpt. 1.5T	45	512 × 512/1	512 × 512/2	2.0	1.7	24.4%
Inpt. 1.5T	49	256 × 256/1	512 × 512/1.5	1.4	1.9	22.4%
Outpt. 3T	101	512 × 512/2	512 × 512/1	2.6	1.6	31.7%
Outpt. 3T	38	512 × 512/2	512 × 512/2	6.0	4.2	34.2%
Outpt. 1.5T	51	512 × 512/2	256 × 256/2	7.9	2.0	21.3%
Outpt. 1.5T	71	224 × 256/3	512 × 512/2	4.3	3.4	12.7%

Note:—Outpt. indicates outpatient; Inpt., inpatient.

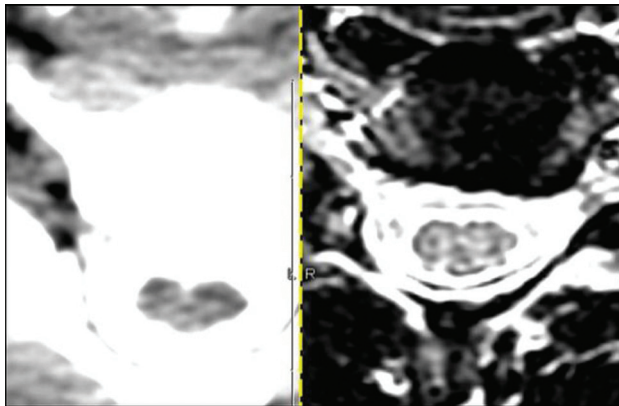
On-line Table 2: Identification and comparison of HIF and AMF on cervical MR imaging versus CT myelography^a

AMF-CTM (n = 123)	
AMF-MRI (n = 103)	50
HIF-MRI (n = 191)	28

^a28 AMF-CTM were identified at the same vertebral levels where HIF-MR, but no AMF-MR, were identified. Of 17 HIF-CTM, 15 (88.2%) were identified as a focal dilation at the base of an AMF-CTM.



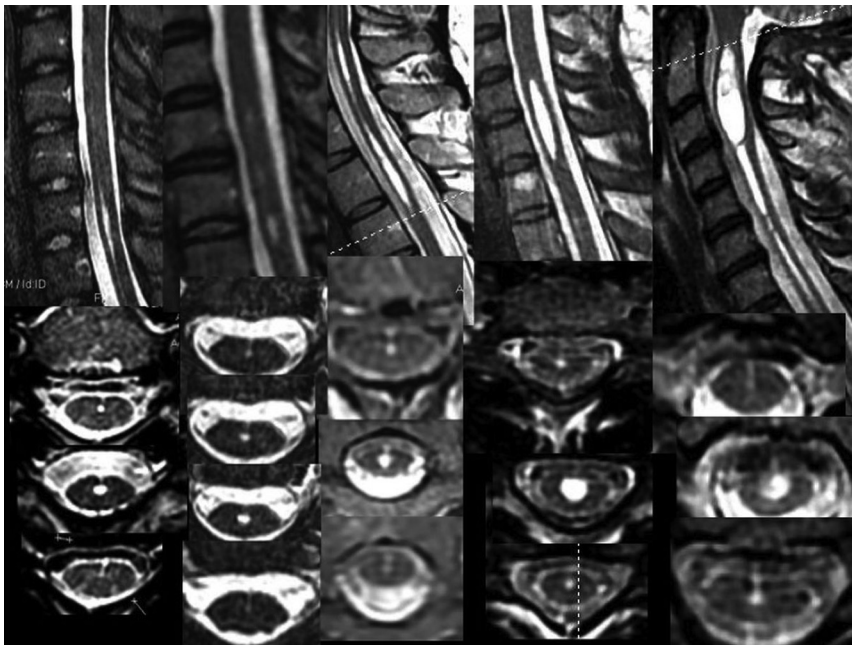
ON-LINE FIG 1. AMF on CTM (*left*) and AMF on MR imaging (*right*) at similar vertebral levels.



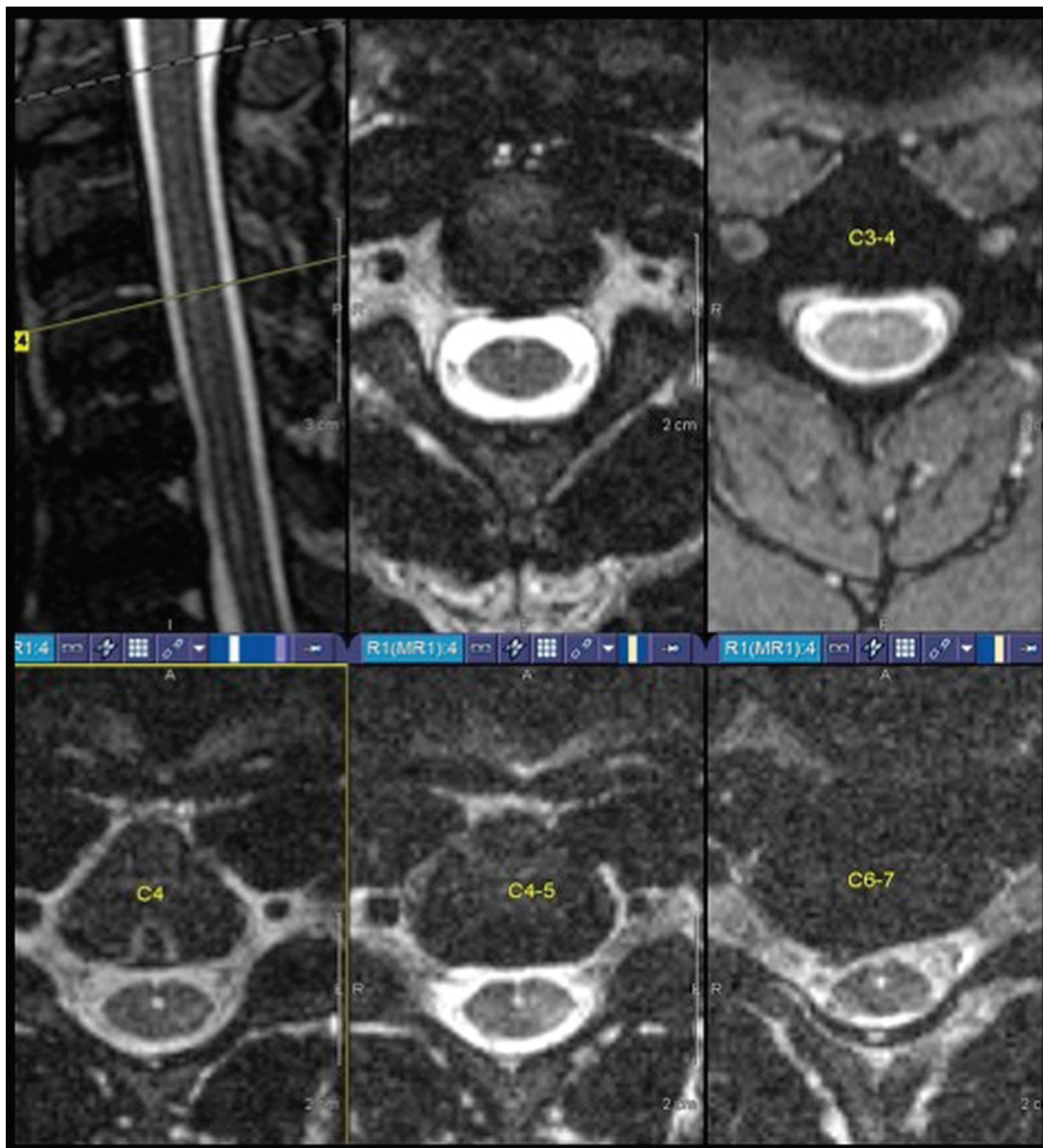
ON-LINE FIG 2. AMF on CT (*left*) with HIF on MR imaging (*right*) at same vertebral level.



ON-LINE FIG 3. Five patients (not included in current study) with thin SLs (*upper part*) of increasing conspicuity left to right. *Lower part*, Corresponding variable axial HIF-AMF.



ON-LINE FIG 4. SL in 5 additional patients with suspected Chiari malformation (not included in current study) of increasing width, length, and compartmentalization from the thin channel on the left to the variable channel or canal and extensive syringohydromyelia of a Chiari malformation on the right. Selected axial images below each sagittal image demonstrate the presence of associated HIF/AMF and the relationship of HIF/AMF to one another.



ON-LINE FIG 5. FIESTA 1.5T MR image. *Upper row: Left, Sagittal line 9.4 cm in length from C4 to C7–T1. Center, Thin AMF with an HIF at its base at C2. Right: HIF with no AMF at C3–4. Lower row: Left, Wider HIF at C4 (with sagittal image scan line above demonstrating wider dilation. Center, C4–5 thin AMF with wider HIF 2 sections below the left image. Right, C6–7 HIF without AMF. This patient with multiple sclerosis demonstrated 8 HIFs and 9 AMFs.*