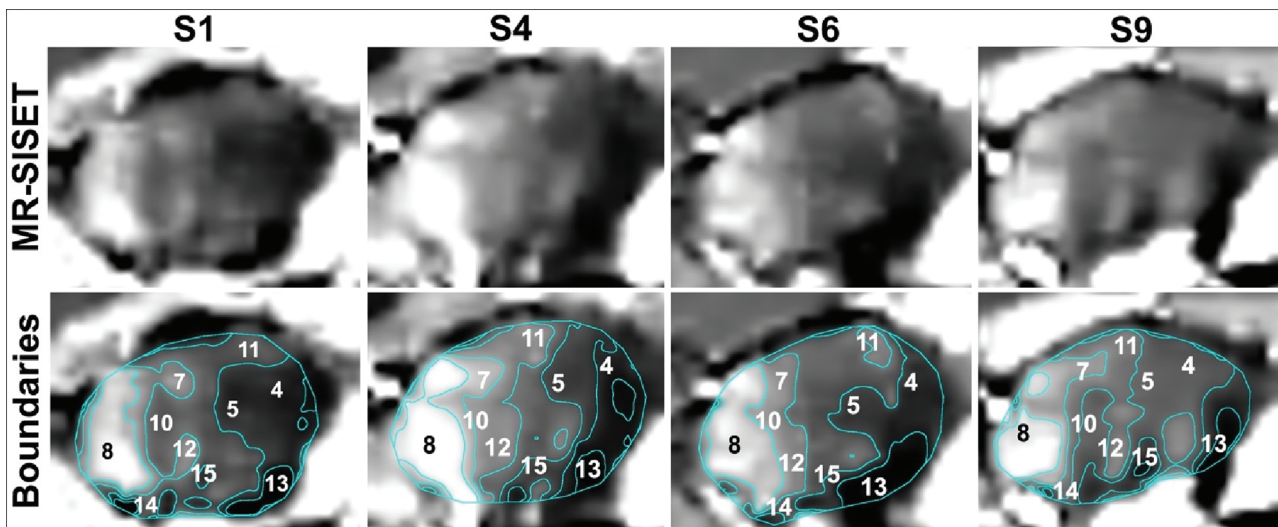


On-line Table: Summary of susceptibility contrast ratios of the 15 nuclei relative to that of the centromedian nucleus

Nucleus	Contrast Ratio (Mean)
Centromedian (CM)	1
Subthalamic (STh)	0.62 ± 0.17
Lateral pulvinar (PuL)	0.87 ± 0.09
Central medial (CeM)	0.92 ± 0.08
Ventral medial (VM)	0.95 ± 0.08
Ventral lateral posterior, ventral division (VLpv)	1.04 ± 0.06
Ventral lateral anterior (VLa)	1.10 ± 0.10
Anterior pulvinar (PuA)	1.17 ± 0.13
Ventral lateral posterior, dorsal division (VLpd)	1.17 ± 0.15
Medial geniculate (MGN)	1.18 ± 0.19
Ventral posterior lateral (VPL)	1.29 ± 0.11
Ventral posterior medial (VPM)	1.29 ± 0.13
Ventral anterior (VA)	1.32 ± 0.09
Mediodorsal (MD)	1.41 ± 0.20
Medial pulvinar (PuM)	1.79 ± 0.31



ON-LINE FIGURE. MR-SISET maps with corresponding boundaries derived from K-mean clustering for 4 representative subjects in the sagittal plane, showing clear similarities between subjects with several consistently segmented subregions. S indicates subject.