

Are your **MRI contrast agents** cost-effective?

Learn more about generic **Gadolinium-Based Contrast Agents**.



**FRESENIUS  
KABI**

caring for life

**AJNR**

**Susceptibility-Weighted MR Phase Imaging  
Can Demonstrate Retrograde  
Leptomeningeal Venous Drainage in Patients  
with Dural Arteriovenous Fistula**

E.L. Gasparetto, C.E. Pires and R.C. Domingues

This information is current as  
of May 2, 2024.

*AJNR Am J Neuroradiol* 2011, 32 (3) E54

doi: <https://doi.org/10.3174/ajnr.A2457>

<http://www.ajnr.org/content/32/3/E54>

## Susceptibility-Weighted MR Phase Imaging Can Demonstrate Retrograde Leptomeningeal Venous Drainage in Patients with Dural Arteriovenous Fistula

We read with special interest the article of Mittal et al<sup>1</sup> entitled "Susceptibility-Weighted Imaging: Technical Aspects and Clinical Applications, Part 2." The authors did a critical review of the most important clinical applications of susceptibility-weighted MR phase imaging (SWI). They emphasized the possible role of SWI for the evaluation of patients with traumatic brain injury, stroke, cerebrovascular disease, neurodegenerative disorders, multiple sclerosis, brain tumors, vascular malformations, and so forth. They demonstrated the usefulness of SWI in patients with dural sinus thrombosis because it can demonstrate venous stasis and collateral slow flow. Regarding the vascular malformations, Mittal et al mentioned the advantages of SWI, because cavernous malformations, developmental venous angiomas, and capillary telangiectasias have slow flow and can be less conspicuous or even missed by conventional MR imaging techniques. However, the role of SWI in cases of dural arteriovenous fistulas (DAVFs), another potential clinical application of this sequence, was not discussed in this article.

We report the case of a 71-year-old man with progressive dementia and a previous history of hemorrhagic infarcts. He underwent brain MR imaging, which showed areas of encephalomalacia with hemosiderin/ferritin deposits and mild microangiopathic changes. In addition to these findings, the SWI demonstrated severe dilation of the cerebral veins on the surface of the brain as well as deep in the brain (Fig 1). Due to these findings, the diagnostic hypothesis of DAVF with retrograde leptomeningeal venous drainage (RLVD) was suggested. Digital subtraction angiography was performed and confirmed the diagnosis of left transverse-sigmoid sinus DAVF with RLVD.

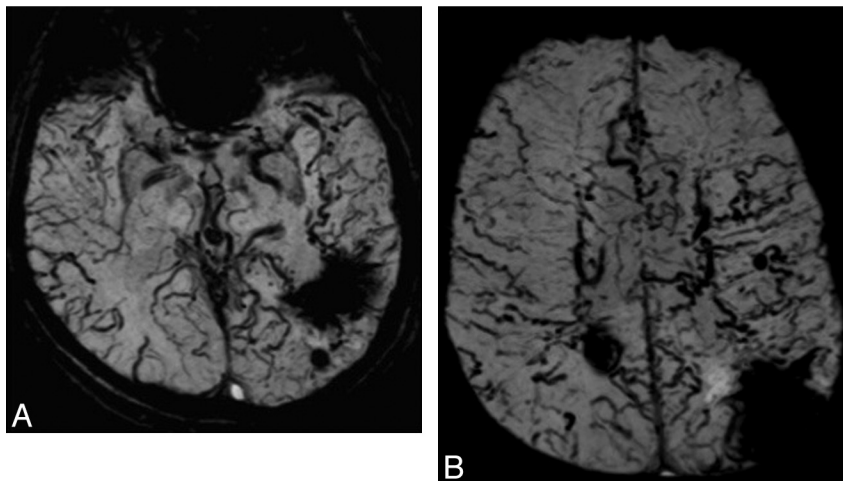
Intracranial DAVFs with RLVD can cause intraparenchymal and subarachnoid hemorrhage, focal neurologic deficits, seizures, and dementia.<sup>2</sup> The presence of RLVD is the most important risk factor for a poor prognosis in patients with DAVF, and it can be well demonstrated with contrast-enhanced T1-weighted MR images.<sup>3</sup> However, SWI not only better demonstrates the venous drainage impairment in these patients but also has the benefit of no intravenous contrast administration. Further studies should investigate the role of SWI for the evaluation of DAVF, but it is clear that this sequence can add valuable information for these patients.

## References

1. Mittal S, Wu Z, Neelavalli J, et al. **Susceptibility-weighted imaging: technical aspects and clinical applications, part 2.** *AJNR Am J Neuroradiol* 2009;30:232–52
2. Kitajima M, Hirai T, Korogi Y, et al. **Retrograde cortical and deep venous drainage in patients with intracranial dural arteriovenous fistulas: comparison of MR imaging and angiographic findings.** *AJNR Am J Neuroradiol* 2005;26:1532–38
3. Lee SK, Willinsky RA, Montanera W, et al. **MR imaging of dural arteriovenous fistulas draining into cerebellar cortical veins.** *AJNR Am J Neuroradiol* 2003;24:1602–06

E.L. Gasparetto  
Department of Radiology  
University Federal of Rio de Janeiro  
C.E. Pires  
University of Rio de Janeiro State  
R.C. Domingues  
Clínica de Diagnóstico Por Imagem  
Rio de Janeiro, RJ  
Brazil

DOI 10.3174/ajnr.A2457



**Fig 1.** Axial SWI minimum-intensity-projection images show severe dilation of cortical and medullary veins in both hemispheres. In addition, old hemorrhagic infarcts are seen in the parietal lobes and left temporal lobe.