

**Are your MRI contrast agents cost-effective?**  
Learn more about generic Gadolinium-Based Contrast Agents.



**AJNR**

**Selective enhanced CT.**

M Corrales

*AJNR Am J Neuroradiol* 1986, 7 (3) 530  
<http://www.ajnr.org/content/7/3/530.citation>

This information is current as  
of May 4, 2024.

### Selective Enhanced CT

The resolution of computer-assisted image techniques, such as CT and digital subtraction angiography, makes possible the representation of the vessels with a small concentration of contrast medium.

Techniques of intravenous injection, with relatively large amounts of contrast medium, have been described to bring out the vascular structures on computed tomography [1-3].

We have developed a technique for injecting contrast medium that uses a thin gauge needle (23 gauge) for the percutaneous puncture of the carotid artery and a 21-gauge needle for the vertebral artery. Contrast medium (mainly meglumine iohalamate 60%) was injected during the tomography cuts with a rate of 0.2 ml/sec by using an infusion pump. We have performed more than 50 examinations without complications.

Aneurysms have been accurately seen (Figs. 1 and 2) and pathologic structures previously poorly seen have become more evident with this method. The puncture, which is done easily, is nontraumatic and no more difficult than a venous puncture. The use of a thin and sharp needle is the clue for preserving the simplicity of the examination.

Mario Corrales  
 Clinica Alemana  
 Santiago, Chile, S.A.

### REFERENCES

1. Yamamoto Y, Satoh T, Sakurai M, Asari S, Sadamoto K. Minimum dose contrast bolus in computed angiotomography of the brain. *J Comput Assist Tomogr* 1982;6(3):575-585
2. Wing SD, Anderson RE, Osborn AG. Cranial computed angiotomography. *Radiology* 1982;143:103-107
3. Hayman LA, Evans RA, Hinck VC. Rapid high dose (RHD) contrast cranial computed tomography: a concise review of normal anatomy. *J Comput Assist Tomogr* 1979;3(2):147-154



Fig. 1.—Subarachnoid hemorrhage shown in computed tomography.

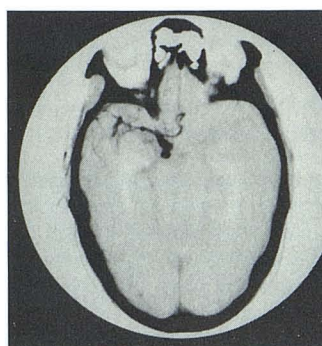


Fig. 2.—Same case. Aneurysm of the left posterior communicating artery is clearly seen with the selective enhanced method