

# Generic Contrast Agents

Our portfolio is growing to serve you better. Now you have a *choice*.



[VIEW CATALOG](#)

# AJNR

## Basilar Artery Thrombosis Diagnosed by MR Imaging

Hector R. Martinez, Guillermo Elizondo, Jaime Herrera, Alejandro Marfil, Jesus Ancer, Jorge Gonzalez, Ricardo Rangel-Guerra and Luis E. Todd

This information is current as of May 11, 2025.

*AJNR Am J Neuroradiol* 1989, 10 (5 suppl) S81  
[http://www.ajnr.org/content/10/5\\_suppl/S81.citation](http://www.ajnr.org/content/10/5_suppl/S81.citation)

# Basilar Artery Thrombosis Diagnosed by MR Imaging

The usefulness of MR in the diagnosis of vertebrobasilar ischemic strokes has been described [1-4]. Changes in signal intensity in neural tissue can be detected as early as 3 hr after ischemic stroke, either on supratentorial or infratentorial lesions [5, 6]. We report the MR diagnosis of two cases of basilar artery thrombosis.

## Case Reports

### Case 1

Dysarthria, headache, and numbness on the left side developed suddenly in a 70-year-old woman with a history of hypertension, diabetes, and posterior fossa transient ischemic attacks. In 48 hours, the patient became stuporous and had left hemiparesis. On arrival, she was comatose, with pupils in midposition and light-fixed; oculocephalic responses were unobtainable. CT was negative. MR showed lesions in the occipital lobes and in the lower part of the basilaris pontes, hypointense to the normal brain on T1-weighted images and hyperintense on T2-weighted images. Increased signal on T1-weighted images was observed in the basilar artery in axial and sagittal views, compatible with thrombosis or slow blood flow (Fig. 1). The patient died 5 days later. At autopsy, the basilar artery had an organized thrombus and atheroma within its lumen.

### Case 2

Right hemiparesis, diplopia, and vertigo developed suddenly in a 30-year old hypertensive man. On admission, the patient was conscious, oriented, and dysarthric. Neuroophthalmologic findings were leftward-beating-clockwise rotatory nystagmus, horizontal nystagmus, and horizontal diplopia. The tongue protruded to the right, and the right gag reflex was decreased. Other findings were loss of sensation on the right side of the face, decreased right corneal reflex, left-sided hemihypalgesia, and right ataxic hemiparesis. Blood glucose was 186 mg/dl, and the potassium level was 2.9 mEq/l. All other tests, including CT, were normal. T2-weighted MR images showed areas of increased signal intensity on the right side of the brainstem involving the lower pons and the upper medulla. Sagittal T1-weighted images showed a high-intensity signal within the basilar artery compatible with thrombosis (Fig. 2). After 1 month of treatment, the patient was discharged.

## Discussion

Occlusion of the basilar artery is often fatal [7]; mortality is 2.5 times greater than that associated with occlusion of the carotid system [8]. Diagnosis of this entity usually is accomplished by angiography, which may produce local or systemic complications [9].

As far as we know, this is the first published report of the MR demonstration of occluded basilar arteries. In the first case, axial and

sagittal T1-weighted images showed a high-intensity signal within the artery, and the findings at autopsy confirmed thrombosis of the basilar artery throughout its course. In the second case, only the sagittal view revealed a density. This was due to both an absence of flow, which normally would produce a signal void, and to thrombosis, which may produce a short T1.

Under normal conditions, because of the fast blood flow, the intraarterial MR signal is hypointense compared with that of normal brain on both T1- and T2-weighted images. Sluggish flow or thrombosis produces a hyperintense intraluminal signal that forms the basis of clot recognition [10].

Our results suggest that MR could be useful in the evaluation of patients who have suspected thrombosis of the basilar artery.

Hector R. Martinez

Guillermo Elizondo

Jaime Herrera

Alejandro Marfil

Jesus Ancer

Jorge Gonzalez

Ricardo Rangel-Guerra

Luis E. Todd

Hospital Universitario U. A. N. L.

Monterrey, N. L., CP 64460, Mexico

## REFERENCES

1. Kistler JP, Buonanno FS, DeWitt LD, Davis KR, Brady TJ, Fisher CM. Vertebral-basilar posterior cerebral territory stroke delineation by proton nuclear magnetic resonance imaging. *Stroke* 1984;15:417-426
2. Savoiardo M, Bracchi M, Passerini A, Visciani A. The vascular territories in the cerebellum and brainstem: CT and MR study. *AJNR* 1987;8:199-209
3. Bogoussalauky J, Fox AJ, Barnett HJM, Hachinski VC, Vinitski S, Carey LS. Clinico-topographic correlation of small vertebrobasilar infarct using magnetic resonance imaging. *Stroke* 1986;17:929-938
4. Ross MA, Biller J, Adams HP, Dunn V. Magnetic resonance imaging in Wallenberg's lateral medullary syndrome. *Stroke* 1986;17:929-938
5. Buonanno FS, Pykett IL, Brady TJ, et al. Proton NMR imaging in experimental ischemic infarction. *Stroke* 1983;14:178-184
6. Bryan RN, Willcott MR, Schneiders NJ, Rose JE. NMR evaluation of stroke in the rat. *AJNR* 1983;4:242-244
7. Hachinski V, Norris JW. Vascular syndromes. In: *The acute stroke*. Philadelphia: F. A. Davis, 1985:103-122
8. Jones HR, Millikan CH, Sandok BA. Temporal profile (clinical course) of acute vertebrobasilar system cerebral infarction. *Stroke* 1980;11:173-177
9. Faught E, Trader SD, Hanna GR. Cerebral complications of angiography for transient ischemia and stroke: prediction of risk. *Neurology* 1979;29:4-15
10. Donohoe CD, Waldman SD, Resor L. Magnetic resonance imaging in cerebral venous thrombosis. *Headache* 1987;27:155-157

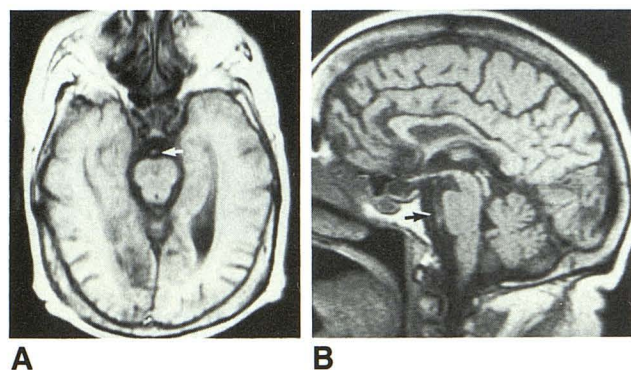


Fig. 1.—A and B, Axial (A) and sagittal (B) T1-weighted MR images, 500/28, show increased signal in basilar artery (arrow) and hypointense signal in occipital lobes.

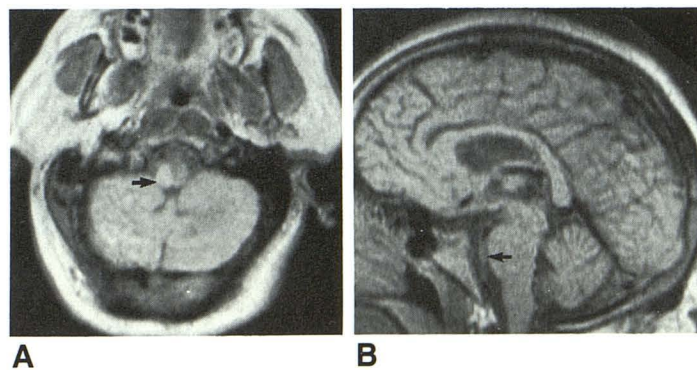


Fig. 2.—A, Axial T2-weighted MR image, 2000/84, shows increased signal intensity in right side of upper medulla (arrow). B, Sagittal T1-weighted MR image, 500/28, shows high-intensity signal within basilar artery (arrow).