

Are your **MRI contrast agents** cost-effective?
Learn more about generic **Gadolinium-Based Contrast Agents**.



AJNR

Erratum

AJNR Am J Neuroradiol 2004, 25 (4) 666
<http://www.ajnr.org/content/25/4/666>

This information is current as
of April 20, 2024.

Erratum

In the article **Spontaneous Superficial Parenchymal and Leptomeningeal Hemorrhage in Term Neonates**, Huang HA and Robertson RL, *AJNR* 25:469–475, March 2004, the figure orientation for figures 5A and 5B was incorrectly printed. The correct figure orientation is shown below:

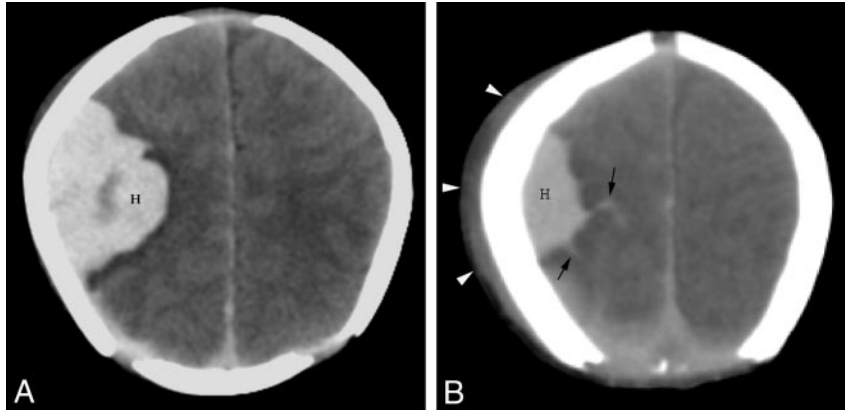


FIG 5. Unenhanced CT scans of a neonate (patient 6) with focal seizures at 18 hr of life.
A, CT scan shows a right parietal parenchymal hematoma (*H*).
B, CT scan obtained at a slightly higher anatomic section reveals additional hemorrhage (*H*) with extension into the sulci, indicating leptomeningeal bleeding (*arrows*). A large overlying cephalohematoma (*arrowheads*) is also present.