

The **next generation** GBCA  
from Guerbet is here

Explore new possibilities >

Guerbet | 

© Guerbet 2024 GUOB220151-A

# AJNR

## **MR Imaging–Based Evaluations of Olfactory Bulb Atrophy in Patients with Olfactory Dysfunction**

M.S. Chung, W.R. Choi, H.-Y. Jeong, J.H. Lee and J.H. Kim

*AJNR Am J Neuroradiol* 2018, 39 (3) 532-537

doi: <https://doi.org/10.3174/ajnr.A5491>

<http://www.ajnr.org/content/39/3/532>

This information is current as  
of July 14, 2024.

# MR Imaging–Based Evaluations of Olfactory Bulb Atrophy in Patients with Olfactory Dysfunction

M.S. Chung, W.R. Choi, H.-Y. Jeong, J.H. Lee, and J.H. Kim

## ABSTRACT

**BACKGROUND AND PURPOSE:** Although the olfactory bulb volume as assessed with MR imaging is known to reflect olfactory function, it is not always measured during olfactory pathway assessments in clinical settings. We aimed to evaluate the utility of visual olfactory bulb atrophy and neuropathy analyses using MR imaging in patients with olfactory dysfunction.

**MATERIALS AND METHODS:** Thirty-four patients who presented with subjective olfactory loss between March 2016 and February 2017 were included. Patients underwent a nasal endoscopic examination, olfactory testing with the Korean Version of the Sniffin' Sticks test, and MR imaging. All patients completed the Sino-Nasal Outcome Test and Questionnaire of Olfactory Disorders. Olfactory bulb atrophy and neuropathy were evaluated on MR images by 2 head and neck radiologists.

**RESULTS:** The etiology of olfactory loss was chronic rhinosinusitis with/without nasal polyps in 15 (44.1%) patients, respiratory viral infection in 7 (20.6%), trauma in 2 (5.9%), and idiopathic in 10 (29.4%) patients. Although 10 (29.4%) of the 34 patients were normosmic according to the Sniffin' Sticks test, their scores on the other tests were like those of patients who were hyposmic/anosmic according to the Sniffin' Sticks test. However, the detection rate of olfactory bulb atrophy was significantly higher in patients with hyposmia/anosmia than it was in patients with normosmia ( $P = .002$ ). No difference in olfactory bulb neuropathy was identified among patients with normosmia and hyposmia/anosmia ( $P = .395$ ).

**CONCLUSIONS:** MR imaging evaluations of olfactory bulb atrophy can be used to objectively diagnose olfactory dysfunction in patients with subjective olfactory loss.

**ABBREVIATIONS:** OB = olfactory bulb; LQ = Life Quality; QOD = Questionnaire of Olfactory Disorders; URI = upper respiratory infection; VISTA = volume isotropic turbo spin-echo acquisition

Symptoms regarding one's sense of smell (olfactory dysfunction) are relatively common, with a prevalence of about 20% in the general population. The etiologies of olfactory loss include postviral upper respiratory infection (URI), sinonasal disease, head trauma, aging, congenital causes, toxins/drugs, miscellaneous, idiopathic, and neurologic diseases such as Parkinson disease, multiple sclerosis, and Alzheimer disease.<sup>1</sup> Olfaction plays a

role in identifying food and hazards and may be involved in social communication; thus, olfactory dysfunction can decrease an individual's quality of life.<sup>2-4</sup>

Because treatments for olfaction loss are ineffective in many patients, precise assessments of their olfactory disturbances should be conducted before starting treatment, because these may be helpful for predicting their prognosis and providing proper counseling.<sup>5</sup> In addition, some patients' olfactory function test scores are normal despite subjectively feeling as though their ability to smell is reduced. In these cases, it is difficult to determine whether one's ability to smell is decreased or whether treatment for hyposmia/anosmia is necessary. Therefore, the use of additional objective diagnostic tools may help confirm olfactory dysfunction in such individuals. Olfactory abilities are generally measured through olfactory function tests such as the University of Pennsylvania Smell Identification Test, the Connecticut Chemosensory Clinical Research Center Threshold Test, or the Sniffin' Sticks test. MR imaging can provide anatomic information on the olfactory pathway. One of the primary parameters for evaluating

Received July 25, 2017; accepted after revision October 26.

From the Department of Radiology (M.S.C.), Chung-Ang University Hospital, Chung-Ang University College of Medicine, Seoul, Republic of Korea; and Departments of Otorhinolaryngology–Head and Neck Surgery (W.R.C., H.-Y.J., J.H.K.) and Radiology and Research Institute of Radiology (J.H.L.), Asan Medical Center, University of Ulsan College of Medicine, Seoul, Republic of Korea.

Paper previously presented, in part, at: International Congress of Otorhinolaryngology–Head and Neck Surgery, April 21–23, 2017; Seoul, Korea.

Please address correspondence to Ji Heui Kim, MD, PhD, Department of Otorhinolaryngology–Head and Neck Surgery, Asan Medical Center, University of Ulsan College of Medicine, 88 Olympic-ro 43-gil, Songpa-gu, Seoul 05505, Republic of Korea; e-mail: jhkim0217@amc.seoul.kr

<http://dx.doi.org/10.3174/ajnr.A5491>

the olfactory pathway with MR imaging is olfactory bulb (OB) volume. Research has shown that OB volume in patients with olfactory loss is significantly decreased, and changes in OB volume are correlated with odor threshold changes.<sup>5-7</sup> However, OB volume measurements are not commonly used for evaluating the olfactory pathway in clinical settings because volumetric analysis itself is difficult to routinely measure through planimetric manual contouring of multiple sections compared with visual analysis. Moreover, the cutoff values for diagnosing atrophy of OB volume in individual patients have not been established.<sup>8-11</sup> Therefore, in the present study, we evaluated the relationship between olfactory function tests and visual analyses of OB atrophy or neuropathy on MR images to determine whether such visual analyses could serve as easy and reliable imaging biomarkers of olfactory dysfunction.

## MATERIALS AND METHODS

### Study Subjects

This study included 34 patients (15 males and 19 females; mean age, 51.4 years; range, 9–72 years) who presented with subjective olfactory loss between March 2016 and March 2017. The mean duration of olfactory loss was 59.2 months (range, 2–552 months). This retrospective study was approved by the institutional review board of Asan Medical Center, exempting the study from requiring patient consent.

Chronic rhinosinusitis was diagnosed according to criteria established by the European Position Paper on Rhinosinusitis and Nasal Polyps (2012) guidelines based on the history, nasal endoscopy, and CT of the paranasal sinuses.<sup>12</sup> A post-URI olfactory deficit was diagnosed when acute loss of olfaction started after URI development and lasted until the consultation without other causes of olfactory loss. A posttraumatic olfactory deficit was diagnosed when the patient experienced a loss of olfaction after cranial trauma without other causes.<sup>5</sup> If the patients did not have a clear cause of olfactory loss despite an extensive evaluation, their etiology was considered idiopathic.<sup>13</sup>

### Olfactory Function Test

Olfactory function was tested by using the Korean Version of the Sniffin' Sticks II test. The odor Threshold, Discrimination, and Identification tests were performed in 3-minute intervals. The Threshold was defined as the concentration at which *n*-butanol (maximum concentration 4%, 16 steps of 1:2 serial dilutions) was accurately identified 4 consecutive times. For the Discrimination test, triplets of odorants (2 identical, 1 different) were presented, and the subject was asked to choose the different odorant. The Identification test was performed using 16 odors familiar to Koreans. The sum of the 3 tests was expressed as the total Threshold-Discrimination-Identification score. Total scores of 0–20 were defined as “anosmia”; 20.25–27, as “hyposmia”; and 27.25–48, as “normosmia,” according to a previous study.<sup>14</sup>

### Symptom Questionnaires

All patients completed the Sino-Nasal Outcome Test-22 and Questionnaire of Olfactory Disorders (QOD) during a clinic visit. The Sino-Nasal Outcome Test questions were scored from 0 (no problem) to 5 (severe problem), and the maximum total score was 110.<sup>15</sup> The QOD consisted of 3 statements, namely the Life Qual-

ity (LQ), Sincerity, and Parosmia statements, and 5 visual analog scales.<sup>2,16</sup> The sum of the QOD-LQ scores comprised the LQ raw score (maximum score = 57 points), which was transformed into the LQ by the following formula:  $LQ = LQ \text{ Raw Score}/0.57$  (%). The sum of the QOD Sincerity scores comprised the Sincerity raw score (maximum score = 18), which was converted to the Sincerity score by the following formula:  $Sincerity \text{ Score} = Sincerity \text{ Raw Score}/0.18$  (%). The sum of the QOD Parosmia scores comprised the Parosmia raw score (maximum score = 12), which was converted to the Parosmia score with the following formula:  $Parosmia \text{ Score} = Parosmia \text{ Raw Score}/0.12$  (%). The visual analog scales consisted of 5 olfactory dysfunction problems, which were scored from 0 to 10.

### Image Acquisition

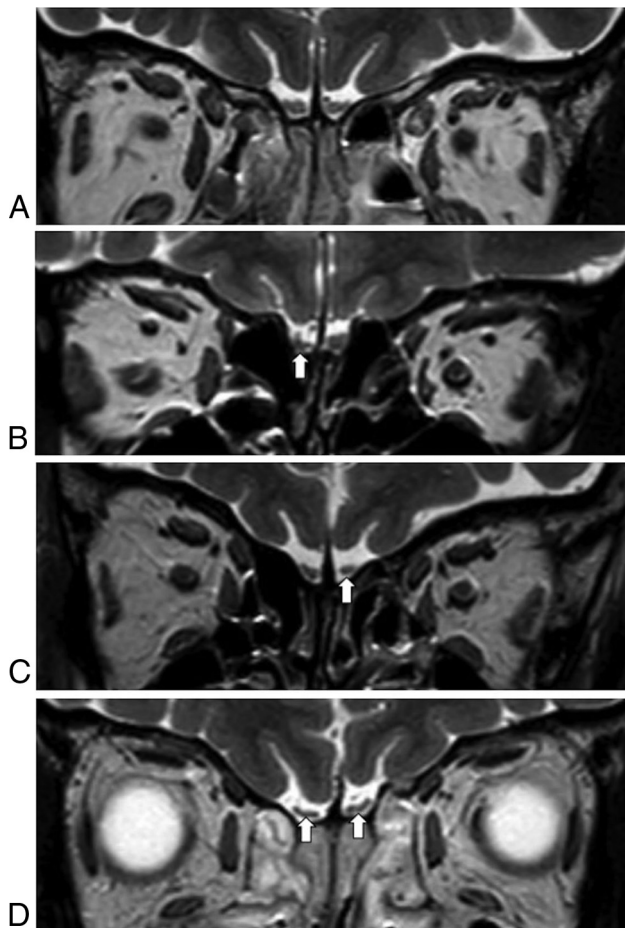
The MR images were acquired using a 3T MR imaging system (Ingenia 3T CX; Philips Healthcare, Best, Netherlands) with a 64-channel head and neck coil. Coronal T2WI and precontrast 3D-FLAIR and 3D-T2 volume isotropic turbo spin-echo acquisition (VISTA; Phillips Healthcare) were performed with the following parameters: TR/TE, 300/80 ms; TSE factor, 15; bandwidth, 209 Hz/pixel; section thickness, 1.5 mm; matrix, 512 × 512; FOV, 90 × 190 mm; voxel size, 0.43 × 0.43 × 1.5 mm; and scan time, 3 minutes for T2WI; TR/TE, 8000/244 ms; TSE factor, 80; bandwidth, 510 Hz/pixel; sensitivity encoding factor, 2.5; section thickness, 0.6 mm; matrix, 256 × 256; FOV, 40 × 180 × 180 mm; voxel size, 0.35 × 0.35 × 0.6 mm; and scan time, 6 minutes and 40 seconds for 3D-FLAIR; and TR/TE, 2000/268 ms; TSE factor, 75; bandwidth, 330 Hz/pixel; acceleration factor, 2.5; section thickness, 0.6 mm; matrix, 376 × 374; FOV, 30 × 150 × 150 mm; voxel size, 0.2 × 0.2 × 0.6 mm; and scan time, 7 minutes and 42 seconds for 3D-T2 VISTA. Sections were angled perpendicular to the anterior base of the skull or cribriform plate. The scan coverage was from the frontal sinus to the optic chiasm.

### Imaging Data Analyses

Two head and neck radiologists, with 18 and 6 years of experience, respectively, analyzed the MR imaging findings via consensus using the PACS system. The radiologists were blinded to the results of the patients' olfactory function tests. The boundaries of the OB were determined using the surrounding CSF and the anterior cribriform plate as markers. Atrophy of the OB was diagnosed on the basis of the following findings: flattening and thinning of the olfactory bulb with loss of the normal oval or J-shape of the OB,<sup>17</sup> and an asymmetric decrease in the size of the OB compared with the OB on the contralateral side (Fig 1).<sup>18</sup> Neuropathy was defined as neuromalacia of the OB, with focal or diffuse high signal intensity in the OB and increased signal compared with the signal intensity of the adjacent frontal white matter with/without decreased volume on 3D-FLAIR or coronal T2-weighted images (Fig 2).<sup>10</sup>

### Statistical Analysis

The etiology of olfactory deficits and subjective symptom severity among patients with normosmia and hyposmia/anosmia following olfactory function tests were compared using the nonparametric Mann-Whitney *U* test and  $\chi^2$  test. The Mann-Whitney *U*



**FIG 1.** Atrophy of the olfactory bulbs. Compared with a patient with normal olfactory bulbs (A), which have an oval or inverted-J shape, patients with atrophy in the olfactory bulbs show asymmetric decreases in the size of the affected olfactory bulbs (B, right; and C, left, arrow) or flattening of the olfactory bulbs (D, arrows).

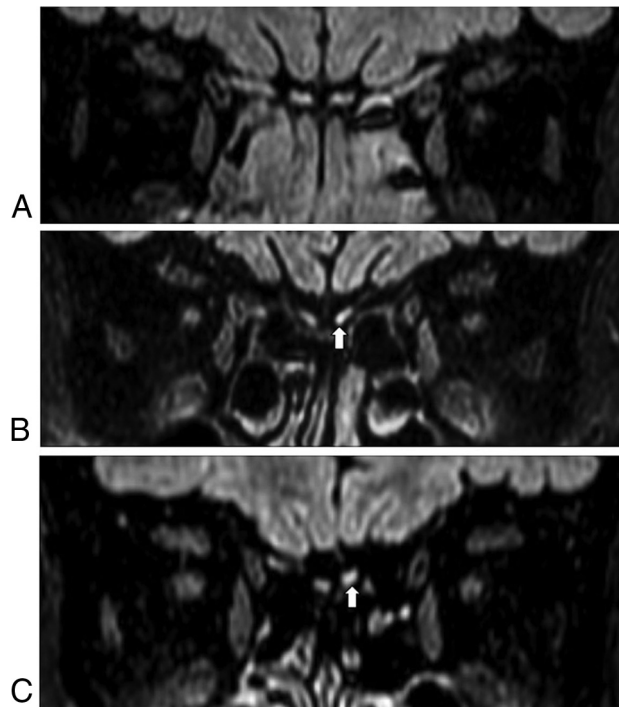
test and Fisher exact test were used to compare the results of olfactory function tests between patients with the presence or absence of OB atrophy and neuropathy. The Mann-Whitney *U* test was used for comparison of the presence or absence of OB atrophy following age and olfactory deficit duration. Data were analyzed by using SPSS 21 (IBM, Armonk, New York). Differences were considered significant at  $P < .05$ .

## RESULTS

### Etiology and Severity of Patients' Subjective Olfactory Symptoms

The etiology of the olfactory deficits was chronic rhinosinusitis with/without polyps in 15 (44.1%) patients, postviral URI in 7 (20.6%), trauma in 2 (5.9%), and idiopathic in 10 (29.4%) patients. None of the patients had olfactory deficits owing to neurologic disease.

Ten (29.4%) of the 34 patients were normosmic according to the Korean Version of the Sniffin' Sticks II test; the mean total Threshold-Discrimination-Identification score for these 10 patients was 35.5 (range, 27.25–43), and their mean Threshold, Discrimination, and Identification scores were 12.5, 11.4, and 11.6, respectively. Twenty-four (70.6%) of the 34 patients had olfactory dysfunction (hyposmic/anosmic) according to the Korean Version of the Snif-



**FIG 2.** Neuropathy of the olfactory bulbs. Homogeneous signal intensity in both olfactory bulbs is noted in a patient without neuropathy (A); however, focal (B) or diffuse (C) hyperintense areas in the left olfactory bulb (arrow) compared with the white matter of the frontal lobe are visible on FLAIR images in patients with neuropathy.

**Table 1: Korean Version of the Sniffin' Sticks II test results according to the etiology of olfactory deficits<sup>a</sup>**

Etiology	Normosmia (n = 10)	Hyposmia/Anosmia (n = 24)	P Value <sup>b</sup>
Chronic rhinosinusitis	4 (40.0)	11 (45.8)	.683
Postviral URI	3 (30.0)	4 (16.7)	
Trauma	0 (0)	2 (8.3)	
Idiopathic	3 (30.0)	7 (29.2)	

<sup>a</sup> Data are the number of patients (%).

<sup>b</sup>  $\chi^2$  test.

fin' Sticks II test; the mean total Threshold-Discrimination-Identification score for these 24 patients was 15.3 (range, 6–27), and their mean Threshold, Discrimination, and Identification scores were 3.1, 6.7, and 5.5, respectively. No differences in olfactory dysfunction were identified among the etiologies ( $P = .683$ , Table 1) or among the various age groups (0–19, 20–39, 40–59, and 60–72 years;  $P = .491$ ). The Sino-Nasal Outcome Test and QOD scores of patients with normosmia were similar to those of patients with olfactory dysfunction (Table 2).

### Relationship between the Olfactory Function Test Scores and OB Atrophy and Neuropathy

Atrophy of the OB on MR images was more frequently identified in patients with olfactory dysfunction (17/24, 70.8%) than in patients with normosmia (1/10, 10.0%) ( $P = .002$ ). Of the patients with atrophy, unilateral atrophy was found in 1 patient with normosmia and 4 patients with olfactory dysfunction, and bilateral atrophy was found in 13 patients with olfactory dysfunction. The mean Threshold, Discrimination, Identification, and total

**Table 2: Comparison of subjective symptom severity between patients with normosmia and those with hyposmia/anosmia<sup>a</sup>**

	Normosmia (n = 10)	Hyposmia/ Anosmia (n = 24)	P Value <sup>b</sup>
SNOT-22 score (mean ± SD)	13.6 ± 9.5	22.83 ± 16.6	.160
QOD (mean ± SD)			
LQ raw score	22.3 ± 10.9	21.4 ± 11.6	.867
LQ (%)	39.1 ± 19.1	37.6 ± 20.3	.867
Sincerity raw score	5.8 ± 2.3	6.4 ± 2.6	.589
Sincerity (%)	32.2 ± 12.8	35.4 ± 14.2	.589
Parosmia raw score	2.3 ± 1.9	2.9 ± 3.3	.838
Parosmia (%)	19.2 ± 15.7	24.7 ± 27.2	.838
Visual analog scales	19.7 ± 10.7	23.8 ± 16.1	.589

**Note:**—SNOT-22 indicates Sino-Nasal Outcome Test-22.

<sup>a</sup> LQ = LQ raw score/0.57 (%); Sincerity = Sincerity raw score/0.18 (%); Parosmia score = Parosmia raw score/0.12 (%).

<sup>b</sup> Mann-Whitney U test.

**Table 3: Comparison of Korean Version of the Sniffin' Sticks II test scores according to the presence/absence of olfactory bulb atrophy**

	Normal	Atrophy	P Value <sup>a</sup>
Threshold	8.1 ± 5.9	3.8 ± 5.1	.030
Discrimination	9.6 ± 2.8	6.7 ± 2.9	.006
Identification	9.1 ± 3.9	5.7 ± 2.5	.006
Total Threshold-Discrimination-Identification score	26.9 ± 11.9	16.2 ± 8.8	.008

<sup>a</sup> Mann-Whitney U tests.

**Table 4: Atrophy and neuropathy of the olfactory bulb on MR images according to the Korean Version of the Sniffin' Sticks II test results and etiology<sup>a</sup>**

Etiology	Normosmia	Hyposmia/ Anosmia	P Value <sup>b</sup>
Chronic rhinosinusitis (n = 15)			
Atrophy	0/4 (0)	7/11 (63.6)	.077
Neuropathy	1/4 (25.5)	3/11 (27.3)	1.000
Postviral URI (n = 7)			
Atrophy	1/3 (33.3)	3/4 (75.0)	.486
Neuropathy	2/3 (66.7)	1/4 (25.0)	.486
Trauma (n = 2)			
Atrophy	0/0 (0)	1/2 (50.0)	NA
Neuropathy	0/0 (0)	0/2 (0)	NA
Idiopathic (n = 10)			
Atrophy	0/3 (0)	6/7 (85.7)	.033
Neuropathy	1/3 (33.3)	1/7 (14.3)	1.000

**Note:**—NA indicates not available.

<sup>a</sup> Data are number of patients (%).

<sup>b</sup> Fisher exact test.

Threshold-Discrimination-Identification scores of patients with OB atrophy were significantly lower than those of patients without OB atrophy ( $P < .05$  for all comparisons, Table 3). When classified according to etiology, OB atrophy was observed in 6 (85.7%) of the 7 patients with idiopathic olfactory dysfunction, whereas OB atrophy was not observed in 3 patients who believed they had olfactory loss but were normosmic according to the olfactory function tests ( $P = .033$ , Table 4). However, regarding the other etiologies, no significant differences in OB atrophy were noted between patients with normosmia and those with olfactory dysfunction ( $P > .05$  for all comparisons). Furthermore, the presence or absence of OB atrophy had no correlation with the age ( $P = .743$ ) or olfactory deficit durations ( $P = .652$ ).

Neuropathy of the OB was detected in 4 (40.0%) of the 10 patients with normosmia and in 5 (20.8%) of the 24 patients with

olfactory dysfunction ( $P = .395$ ). No difference in the presence of OB neuropathy was identified between patients with normosmia and those with olfactory dysfunction when grouped according to etiology ( $P > .05$  for all comparisons).

Brain parenchymal lesions were detected in 3 (12.5%) of the 24 patients who had olfactory dysfunction according to the Korean Version of the Sniffin' Sticks II test and OB atrophy on MR images. Focal encephalomalacic changes in the rectus gyrus or frontal lobe and sequelae from hemorrhagic contusions in the bilateral orbitofrontal base may affect olfactory dysfunction.

## DISCUSSION

In the present study, we evaluated whether visual analyses of OB atrophy on MR images could serve as an easy and reliable method for diagnosing olfactory dysfunction. Here, we found that ~30% of patients with subjective olfactory loss had normal olfactory function test results and that the subjective severity of olfactory loss in these patients, as represented by the Sino-Nasal Outcome Test and QOD, was similar to that of patients who had hyposmia/anosmia according to the Sniffin' Sticks test. Additionally, the number of patients classified as normosmic according to the olfactory function tests was not different among the various etiology and age groups. These results support additional objective diagnostic methods being required to confirm olfactory loss. OB atrophy on MR images using visual analysis was more frequent in patients with hyposmia/anosmia compared with those with normosmia. Therefore, we suggest that MR imaging evaluations of OB atrophy could be used to objectively diagnose olfactory dysfunction in patients with subjective olfactory loss.

Many previous studies have used MR imaging to assess the OB in patients with olfactory loss because the OB plays an important role in processing olfactory information that is sent between the olfactory receptor neurons and the brain. Several studies have shown that patients with posttraumatic and postviral olfactory dysfunction as well as idiopathic olfactory loss have reduced OB sizes on MR images compared with healthy controls.<sup>19-21</sup> The depth of the olfactory sulcus, which is located between the gyrus rectus and medial orbital gyrus in the frontal lobe and positioned over the OB and olfactory tract, is considered another relevant parameter for evaluating the olfactory pathway with MR imaging. However, the depth of the olfactory sulcus is not significantly different in patients with idiopathic olfactory loss and those with Parkinson disease compared with healthy controls.<sup>7,20</sup> Thus, evaluating the OB rather than the olfactory sulcus may be valuable in patients with olfactory dysfunction except for those with congenital anosmia. Unfortunately, the OB volume is not routinely measured in patients with olfactory dysfunction because it requires complex assessment techniques of volumetry; therefore, we hypothesized that visual analyses of OB atrophy or neuropathy on MR images can be practically used as an objective assessment tool in clinical settings for patients with olfactory dysfunction.<sup>22,23</sup> Our results demonstrated that indeed, OB atrophy was significantly related to decreased olfactory function.

Thin-section coronal T2WI (<2 mm) and 3D images have been highly recommended for the precise anatomic evaluation of the OB and olfactory tract owing to their small sizes.<sup>10</sup> In addition to coronal T2WI at 1.5 mm, we performed high-resolution 3D-

FLAIR and 3D-T2 VISTA with a 0.6-mm section thickness. Using these techniques, we identified OB atrophy in 70.8% of patients with hyposmia/anosmia, as assessed with olfactory function tests, and atrophy was significantly more common in patients with dysfunction than it was in those with normosmia (10.0%). Furthermore, the olfactory function test scores of patients with OB atrophy were significantly lower than those of patients without OB atrophy. Moreover, the detection rate of OB atrophy was not different among the various age and olfactory deficit duration groups. These results suggested that visual analysis of OB atrophy is a useful diagnostic method for patients with subjective olfactory loss regardless of their age and olfactory deficit duration.

Evaluating OB atrophy with MR imaging in patients with idiopathic olfactory loss may help determine whether there is olfactory loss, even though the significance of the absence of atrophy on MR imaging in a patient with subjective symptoms was not identified. Our results showing that there was no difference in OB atrophy between normosmia and hyposmia/anosmia according to the Sniffin' Sticks II test in patients with chronic rhinosinusitis seem to reflect their olfactory deficits possibly being conductive. Because only a few patients had postviral URI and posttraumatic olfactory loss in the present study, it may be difficult to assess the correlation between OB atrophy and the results of olfactory function tests.

The significance of neuropathy (neuromalacic hyperintense changes) of the OB on 3D-FLAIR images has not yet been established in patients with olfactory loss. In our study, neuropathy of the OB was detected not only in patients with hyposmia/anosmia, as assessed with olfactory function tests, but also in patients with normosmia. This result may be because our patients had been experiencing olfactory deficits for >2 months. Further studies are required to determine the prognostic value of neuropathy according to the duration of olfactory loss.

A substantial number of brain lesions that may affect olfactory dysfunction were found in 12.5% of our patients who had hyposmia/anosmia according to the Korean Version of the Sniffin' Sticks II test and OB atrophy on MR images. Two patients with posttraumatic olfactory deficits had focal encephalomalacic changes in the rectus gyrus and frontal lobe, respectively. One patient with idiopathic olfactory loss, though unusual, showed sequelae from a hemorrhagic contusion in the bilateral orbito-frontal base without a history of trauma. This MR imaging finding may have helped this patient receive appropriate counseling because the patient did not link the occurrence of olfactory loss with a significant event.

This study has several limitations. First, our sample size was relatively small, and the data were retrospectively reviewed. Decreased statistical power caused by the sample size might affect the ability to declare statistical significance in our results, such as the relation between the olfactory function tests and the Sino-Nasal Outcome Test-22 (which demonstrated relatively large score differences) or OB atrophy subclassified by etiology (a small number of patients for each subgroup). Further prospective study with a larger population is needed. Second, we could not assess the follow-up data after treatment in patients with OB atrophy or neuropathy due to short-term follow-up. Further studies that include patients with variable deficit-onset times, including sudden olfac-

tory deficits (<4 weeks) and chronic hyposmia/anosmia, should be performed to evaluate the prognostic value of OB atrophy or neuropathy. Nevertheless, our study demonstrates that visual analyses of OB atrophy using MR imaging are closely related to olfactory function.

## CONCLUSIONS

The results of the present study show that the detection rate of OB atrophy on MR images was significantly higher in patients with olfactory dysfunction than it was patients with normosmia. Therefore, evaluating OB atrophy with MR imaging may serve as a readily available objective diagnostic method for confirming olfactory dysfunction in patients with subjective olfactory loss.

## ACKNOWLEDGMENTS

We thank professor Johannes Frasnelli for providing the Questionnaire of Olfactory Disorders.

## REFERENCES

1. Croy I, Nordin S, Hummel T. **Olfactory disorders and quality of life: an updated review.** *Chem Senses* 2014;39:185–94 CrossRef Medline
2. Frasnelli J, Hummel T. **Olfactory dysfunction and daily life.** *Eur Arch Otorhinolaryngol* 2005;262:231–35 CrossRef Medline
3. Croy I, Buschhüter D, Seo HS, et al. **Individual significance of olfaction: development of a questionnaire.** *Eur Arch Otorhinolaryngol* 2010;267:67–71 CrossRef Medline
4. Neuland C, Bitter T, Marschner H, et al. **Health-related and specific olfaction-related quality of life in patients with chronic functional anosmia or severe hyposmia.** *Laryngoscope* 2011;121:867–72 CrossRef Medline
5. Rombaux P, Huart C, Deggouj N, et al. **Prognostic value of olfactory bulb volume measurement for recovery in postinfectious and post-traumatic olfactory loss.** *Otolaryngol Head Neck Surg* 2012;147:1136–41 CrossRef Medline
6. Haehner A, Rodewald A, Gerber JC, et al. **Correlation of olfactory function with changes in the volume of the human olfactory bulb.** *Arch Otolaryngol Head Neck Surg* 2008;134:621–24 CrossRef Medline
7. Wang J, You H, Liu JF, et al. **Association of olfactory bulb volume and olfactory sulcus depth with olfactory function in patients with Parkinson disease.** *AJNR Am J Neuroradiol* 2011;32:677–81 CrossRef Medline
8. Buschhüter D, Smitka M, Puschmann S, et al. **Correlation between olfactory bulb volume and olfactory function.** *Neuroimage* 2008;42:498–502 CrossRef Medline
9. Rombaux P, Duprez T, Hummel T. **Olfactory bulb volume in the clinical assessment of olfactory dysfunction.** *Rhinology* 2009;47:3–9 Medline
10. Duprez TP, Rombaux P. **Imaging the olfactory tract (cranial nerve #1).** *Eur J Radiol* 2010;74:288–98 CrossRef Medline
11. Huart C, Meusel T, Gerber J, et al. **The depth of the olfactory sulcus is an indicator of congenital anosmia.** *AJNR Am J Neuroradiol* 2011;32:1911–14 CrossRef Medline
12. Fokkens WJ, Lund VJ, Mullol J, et al. **European Position Paper on Rhinosinusitis and Nasal Polyps 2012.** *Rhinol Suppl* 2012;23:1–298 Medline
13. Hoekman PK, Houlton JJ, Seiden AM. **The utility of magnetic resonance imaging in the diagnostic evaluation of idiopathic olfactory loss.** *Laryngoscope* 2014;124:365–68 CrossRef Medline
14. Shin DH, Ahn SH, Yang Y, et al. **The effect of sleep disordered breathing on olfactory functions: analysis by Apnea-Hypopnea Index.** *Clin Exp Otorhinolaryngol* 2017;10:71–76 CrossRef Medline
15. Kennedy JL, Hubbard MA, Huyett P, et al. **Sino-Nasal Outcome Test (SNOT-22): a predictor of postsurgical improvement in patients**

- with chronic sinusitis. *Ann Allergy Asthma Immunol* 2013;111:246–51.e2 CrossRef Medline
16. Yang D, Wang J, Ni D, et al. **Reliability and validity of the Chinese version of the Questionnaire of Olfactory Disorders (QOD) when used with patients having olfactory dysfunction.** *Eur Arch Otorhinolaryngol* 2016;273:3255–61 CrossRef Medline
  17. Schneider JF, Floemer F. **Maturation of the olfactory bulbs: MR imaging findings.** *AJNR Am J Neuroradiol* 2009;30:1149–52 CrossRef Medline
  18. Booth TN, Rollins NK. **Spectrum of clinical and associated MR imaging findings in children with olfactory anomalies.** *AJNR Am J Neuroradiol* 2016;37:1541–48 CrossRef Medline
  19. Mueller A, Rodewald A, Reden J, et al. **Reduced olfactory bulb volume in post-traumatic and post-infectious olfactory dysfunction.** *Neuroreport* 2005;16:475–78 CrossRef Medline
  20. Rombaux P, Potier H, Markessis E, et al. **Olfactory bulb volume and depth of olfactory sulcus in patients with idiopathic olfactory loss.** *Eur Arch Otorhinolaryngol* 2010;267:1551–56 CrossRef Medline
  21. Rombaux P, Wetz H, Mouraux A, et al. **Olfactory function assessed with orthonasal and retronasal testing, olfactory bulb volume, and chemosensory event-related potentials.** *Arch Otolaryngol Head Neck Surg* 2006;132:1346–51 CrossRef Medline
  22. Bresciani L, Rossi R, Testa C, et al. **Visual assessment of medial temporal atrophy on MR films in Alzheimer's disease: comparison with volumetry.** *Aging Clin Exp Res* 2005;17:8–13 CrossRef Medline
  23. Gouw AA, van der Flier WM, van Straaten EC, et al. **Reliability and sensitivity of visual scales versus volumetry for evaluating white matter hyperintensity progression.** *Cerebrovasc Dis* 2008;25:247–53 CrossRef Medline