




Arachnoid Membranes: Crawling Back into Radiologic Consciousness

 S. Lu,  A. Brusica, and  F. Gaillard



ABSTRACT

SUMMARY: The arachnoid membranes are projections of connective tissue in the subarachnoid space that connect the arachnoid mater to the pia mater. These are underappreciated and largely unrecognized by most neuroradiologists despite being found to be increasingly important in the pathogenesis, imaging, and treatment of communicating hydrocephalus. This review aims to provide neuroradiologists with an overview of the history, embryology, histology, anatomy, and normal imaging appearance of these membranes, as well as some examples of their clinical importance.

ABBREVIATIONS: ETV = endoscopic third ventriculostomy; LM = Lilliequist membrane

The subarachnoid space is traversed by projections of connective tissue covered in leptomeningeal cells that connect the arachnoid mater to the pia mater. These have a variety of morphologies ranging from thin cylinders (referred to as “pillars,” “rods,” or “trabeculae”) to more elongated flattened structures (referred to as “septa”).¹ In some areas, these septa are particularly extensive, forming semicontinuous sheets referred to as “arachnoid membranes” (also known as “subarachnoid trabecular membranes” or “inner arachnoid membranes”). The subarachnoid cisterns, typically named according to the brain structures they abut, are often separated from each other by these membranes, which, in turn, determine the flow of CSF from one cistern to the next.

The importance of arachnoid membranes is well-known within the neurosurgery community because these membranes, together with the subarachnoid cisterns, provide natural avenues for dissection during surgery.² In contrast, current neuroradiologists and modern radiology literature are less familiar with their existence and anatomy despite their impact on everyday clinical imaging and their potential importance in understanding a variety of conditions characterized by abnormal CSF flow.

This review seeks to provide neuroradiologists with an overview of the histology, embryology, anatomy, and normal imaging appearance of these membranes, as well as some examples of their clinical importance.

History

While the dura and pia mater were described by Galen in the second century AD,³ the intervening arachnoid mater was not described until the 17th century. Gerardus Blasius (1626–1692) was the first to describe and name the arachnoid layer of the meninges in 1664, naming it in recognition of its cobweb-like traversing membranes and trabeculations, and Frederick Ruysch (1638–1731) confirmed that the arachnoid mater comprised a complete layer surrounding the brain.^{4,5} In the 1690s, Humphrey Ridley (1653–1708) wrote about the concept of the subarachnoid cistern, describing the cerebellomedullary, quadrigeminal, and olfactory cisterns.⁵


It was not until the 19th century that the role of the arachnoid membranes in influencing the flow of CSF was recognized. In 1842, Francois Magendie (of foramen of Magendie fame; 1783–1855) demonstrated that CSF in the ventricles freely communicates with the subarachnoid space, and in 1869, Axel Key (1832–1901) and Magnus Retzius (1842–1919) published detailed drawings of the subarachnoid cisterns and the arachnoid trabeculations and, with a series of experiments using injected dye, demonstrated the free communication of CSF through the fenestrations in the arachnoid.⁶


The importance of the arachnoid membranes in neurosurgery was recognized by Gazi Yasargil (1925), one of the pioneers of microneurosurgery, who introduced the technique of moving from 1 cistern to another during neurosurgical procedures by

Received May 2, 2021; accepted after revision July 29.

From the Department of Radiology (S.L., A.B., F.G.), Royal Melbourne Hospital, Parkville, Victoria, Australia; and Faculty of Medicine, Dentistry, and Health Sciences (F.G.), University of Melbourne, Parkville, Victoria, Australia.

Please address correspondence to Shisheng Lu, MBBS, Department of Radiology, Royal Melbourne Hospital, 300 Grattan St, Parkville VIC 3050, Australia; e-mail: lushisheng@gmail.com

 Indicates open access to non-subscribers at www.ajnr.org

 Indicates article with online supplemental data.

<http://dx.doi.org/10.3174/ajnr.A7309>

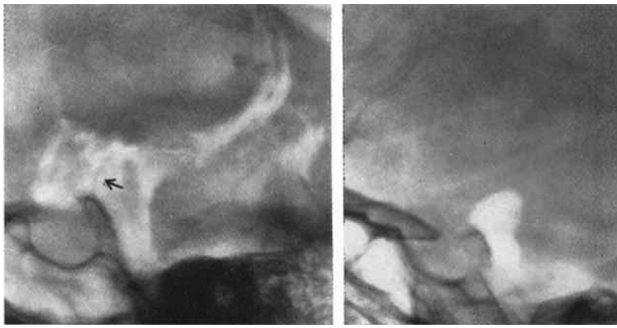


FIG 1. Lateral pneumoencephalogram demonstrating the LM (left) and the air column arrested in the interpeduncular cistern against the LM (right). Arrow in the left image points to the LM (left). Reproduced with permission from Lilliequist.⁸ Copyright (1956) SAGE Publications.

dividing the arachnoid membranes that separate the cisterns.² Yasargil also noted that the arachnoid membranes were often porous with various-sized openings and that the openings could become plugged and obliterated after subarachnoid hemorrhage.

The radiologic importance of the anatomy of the subarachnoid space dates back to the very earliest days of imaging. In 1919, a mere 24 years after Wilhelm Röntgen took the first-ever x-ray image (of the hand of his wife on December 22, 1895), Walter Dandy developed pneumoencephalography. At the time a novel technique, this aided the diagnosis and localization of intracranial tumors and was widely used until the 1970s. Pneumoencephalography was an invasive and unpleasant procedure, involving injecting air either directly into the ventricles or into the lumbar subarachnoid space and maneuvering the patient to allow the air to float into the intracranial subarachnoid space and ventricles.⁷ This procedure caused the CSF to be displaced, creating greater contrast between the brain parenchyma and the ventricles, sulci, cisterns, and recesses on cranial radiography. Thus, distortion in the shape or alteration in the location of normal structures could be identified, and the presence of a tumor, inferred. Incidentally, it was recognized that air tended to accumulate within predictable areas of the subarachnoid space, indirectly allowing imaging of the arachnoid membranes.

It was only in 1956 that a Swedish neuroradiologist, Bengt Lilliequist⁸ (1923–2008), having noted that during pneumoencephalography air often paused in the interpeduncular cistern before gradually filling the chiasmatic cistern, first described the imaging appearance of the membrane bearing his name.⁹ The Lilliequist membrane (LM) could often be seen on a lateral pneumoencephalogram as a fine line with a convexity forward, extending from the tip of the dorsum of the sella to the anterior edge of the mammillary bodies (Fig 1).

As pneumoencephalography fell out of favor in preference to the newly developed and noninvasive cross-sectional modalities of CT and MR imaging, so too did routine radiologic visualization of the arachnoid membranes, and, with time, their anatomy largely receded from our collective radiologic memory.

Fortunately, with the advent of higher-field-strength and higher-resolution MR imaging, we are now in a position to once more image these important structures.

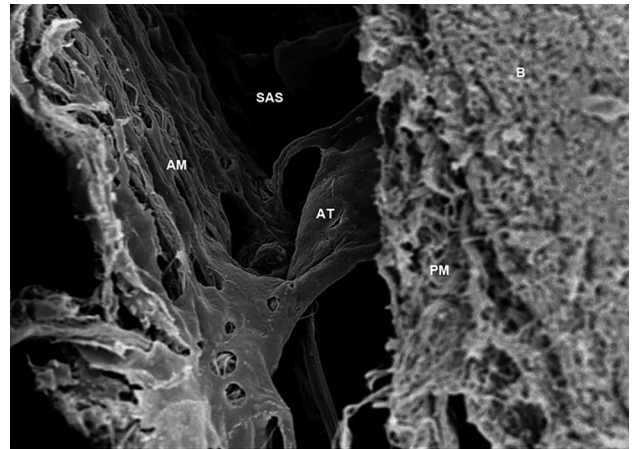


FIG 2. Scanning electron microscope image obtained in the brain of a Sprague-Dawley rat, showing the arachnoid trabeculae (AT) located in the subarachnoid space (SAS) and connected to the arachnoid mater (AM) and pia mater (PM) just next to the brain (B). The parameters are the following: magnification = 2.50 K X; high current = off; electron high tension = 5.00 kV; signal A = InLens; scan speed = 7; focus = 4.6 mm; stage at Z = 45.724 mm; system vacuum = 2.51e-006 mbar; tilt angle = 0.0°; working distance = 4.6 mm. Used with permission from Saboori. Copyright (2020) Wiley.⁴⁸

Embryology

The embryologic development of the subarachnoid space and its membranes occurs in 2 phases. The first is the development of a primitive space-holding mesenchymal layer known as the meninx primitiva, or primitive subarachnoid space, and the second is the development and expansion of lacunae, causing compaction of the mesenchyme.¹⁰

In the first phase, shortly after the closure of the neural tube at approximately days 10–13 postconception (fourth week of pregnancy), mesenchymal cells move from the developing cervical spine into the space formed between the embryonic epithelium and neuroepithelium of the telencephalon.^{10,11} At this stage, the meninx primitiva consists of a gel-like layer of glycosaminoglycans (chains of repeating disaccharides) with widely spaced pluripotent stellate mesenchymal cells and a vascular plexus.¹²

In the second phase, random fluid-filled cavities or lacunae begin to form in this gel-like meninx primitiva, gradually enlarging and pushing the mesenchymal cells apart. Where the walls of the cavities meet, the cells become compacted, forming membranes. At this stage, primary or congenital arachnoid cysts may form as a result of duplication of the arachnoid membranes or failure of meningeal fusion.^{13,14} On the inner and outer aspects of the meninx primitiva, the mesenchymal cells begin to specialize, forming the arachnoid and pia mater; this process is usually complete by day 17.^{10,15} The arachnoid membranes are, therefore, the remaining trabeculated structures joining the 2 inner layers of the meninges.

Histology

Arachnoid septa, trabeculae, and membranes are projections that extend from the arachnoid mater to the pia mater (Fig 2). Arachnoid trabeculae are composed of collagen bundles coated by leptomeningeal cells, which are joined by desmosomes and

gap junctions.¹⁶ Small vessels within the subarachnoid space are enclosed within the trabeculae, and larger vessels are coated by leptomeningeal cells, which are continuous with cells in the trabeculae. Where the trabeculae join the pia mater, the cellular layers of the trabeculae become continuous with the outer layer of the pia mater.

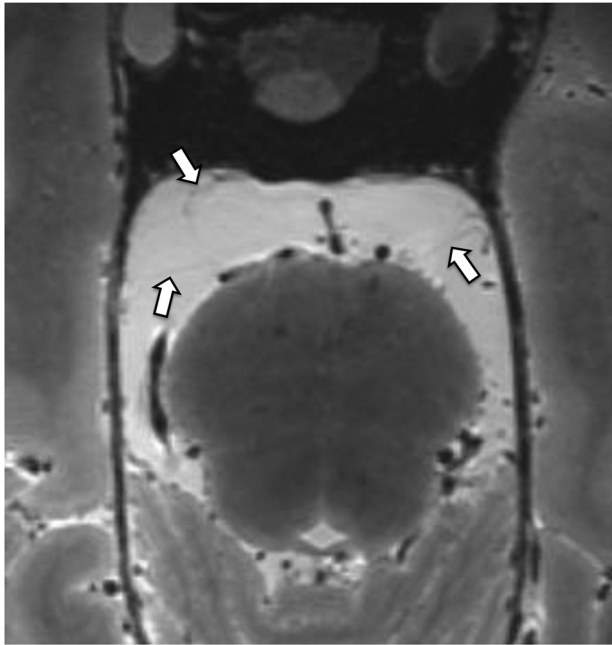


FIG 3. Axial reformat of a high-resolution T2-weighted sequence of a cadaveric head on a 7T MR imaging scanner.⁴⁹ The arachnoid membranes (arrows) in the prepontine cistern are very thin and barely perceptible. Acknowledgment: The authors acknowledge the facilities and scientific and technical assistance of the National Imaging Facility, a National Collaborative Research Infrastructure Strategy capability, at the Melbourne Brain Center Imaging Unit, Department of Radiology, University of Melbourne. Financial support was provided via the “See It, Slice It, Learn It” project funded by a University of Melbourne internal grant.⁴⁹

In certain areas, very dense networks of semicontinuous trabeculae are present and have the appearance and qualities of true membranes.¹⁷ These membranes divide the subarachnoid space into individual cisterns and provide support for the neurovasculature that passes through them.¹⁷ These arachnoid membranes vary greatly in macroscopic appearance: They can be transparent or semitransparent, membranous or reticulated, porous or intact, and thin or thick, and the same anatomic membrane can appear different in different specimens.⁵

Imaging

The arachnoid membranes were first seen radiologically on pneumoencephalography. As CT and MR imaging became established imaging modalities, however, pneumoencephalography became effectively obsolete in the 1970s.¹⁸ Unfortunately, due to the limitations of spatial resolution of early CT and MR imaging, it was also no longer possible to visualize the arachnoid membranes. It has not been until recently with the development of high-resolution MR imaging techniques, such as the true fast imaging with steady-state precession and CISS (Siemens), FIESTA and FIESTA-C (GE Healthcare), Balanced fast field echo (Philips Healthcare), balanced SARGE and phase-balanced SARGE (Hitachi), and True steady-state free precession (Toshiba), that some of the arachnoid membranes are again sometimes visible on routine imaging.

Normal arachnoid membranes, when visible, appear as thin T2-hypointense lines traversing the CSF in the subarachnoid space. Because the arachnoid membranes are very thin, especially in the absence of disease, most normal membranes remain elusive and difficult to visualize, even with high-resolution high-field-strength scans (Fig 3). Instead, the presence of the arachnoid membranes can often be inferred from most routine scans from the containment and separation of CSF flow voids and artifacts in neighboring subarachnoid cisterns (Fig 4). In contrast, in the presence of subarachnoid hemorrhage, inflammation, or tumor, arachnoid membranes may become thickened, facilitating easier identification, typically on dedicated high-resolution imaging (Fig 5).

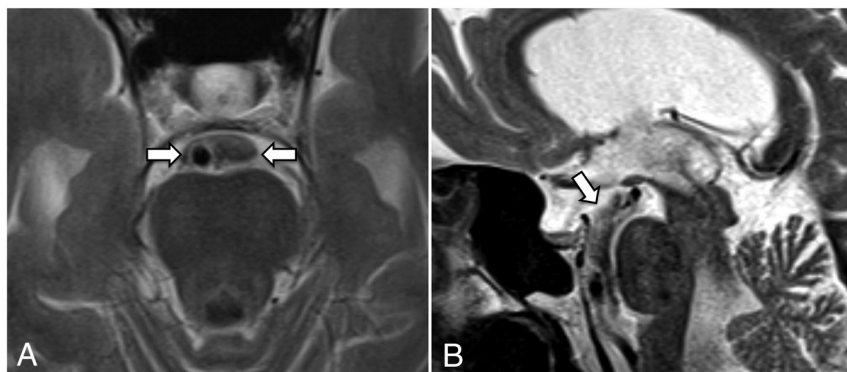


FIG 4. A, T2-weighted axial image (section thickness = 3 mm) shows a prominent CSF flow void around the basilar artery confined to the prepontine cistern. The lateral margins of the flow void (arrows) are likely due to the anterior pontine membranes. B, T2-weighted midline sagittal image (section thickness = 3 mm) demonstrates a CSF flow void tracking along the prepontine and interpeduncular cisterns, with an abrupt change in signal superiorly at the expected location of the diencephalic leaf of the LM (arrow).

Anatomy

Similar to the subarachnoid cisterns, the arachnoid membranes are generally named according to their relationship to the adjacent brain, with the exception of the eponymously named LM. The microsurgical anatomy of multiple arachnoid membranes has been well-described in the neuroanatomy literature,^{17,19-31} and these are summarized in the Online Supplemental Data.⁵ The list is rather extensive, and identification of these membranes is difficult even with high-resolution MR imaging techniques. Furthermore, the exact attachments and boundaries of various membranes are variably described, presumably representing variability not only in description but also in true

anatomy. Nonetheless, it is worthwhile discussing the anatomy of the arachnoid membranes associated with the interpeduncular and prepontine cisterns (Figs 6 and 7) because abnormally thickened

membranes are commonly identified in these cisterns in some patients with communicating hydrocephalus.^{32,33}

The interpeduncular cistern is bounded by the midbrain posteriorly and the 2 leaves of the LM anterior-superiorly and anterior-inferiorly. The LM (Figs 8 and 9) arises from the posterior clinoid processes and dorsum sellae and extends posterior-superiorly, separating into 2 sheets.¹⁹

One sheet, known as the diencephalic leaf, extends posterior-superiorly and attaches to the diencephalon at or anterior to the mammillary bodies. It is fairly complete anteriorly, thus impeding the spread of air on pneumoencephalography, but it is less complete posteriorly near its attachment.²⁶ The diencephalic leaf thus separates the chiasmatic cistern from the interpeduncular cistern. The other sheet, known as the mesencephalic

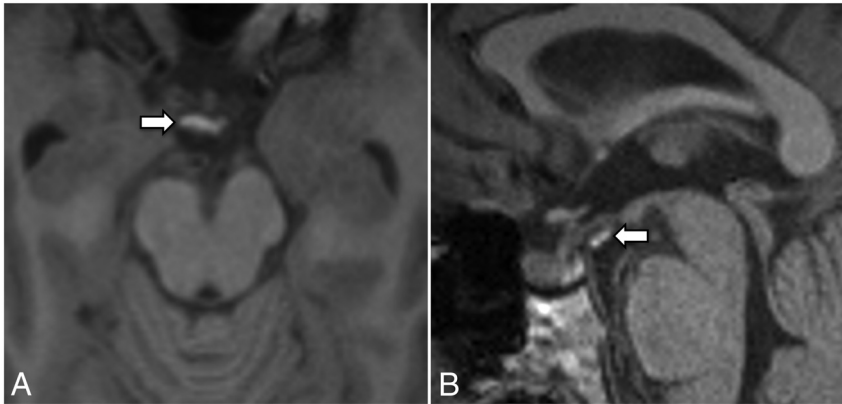


FIG 5. Axial (A) and sagittal (B) T1 MPRAGE images of a patient with subarachnoid hemorrhage show a T1-hyperintense blood product attached to the LM (arrows). The MR imaging examination was performed on day 8 postpresentation.

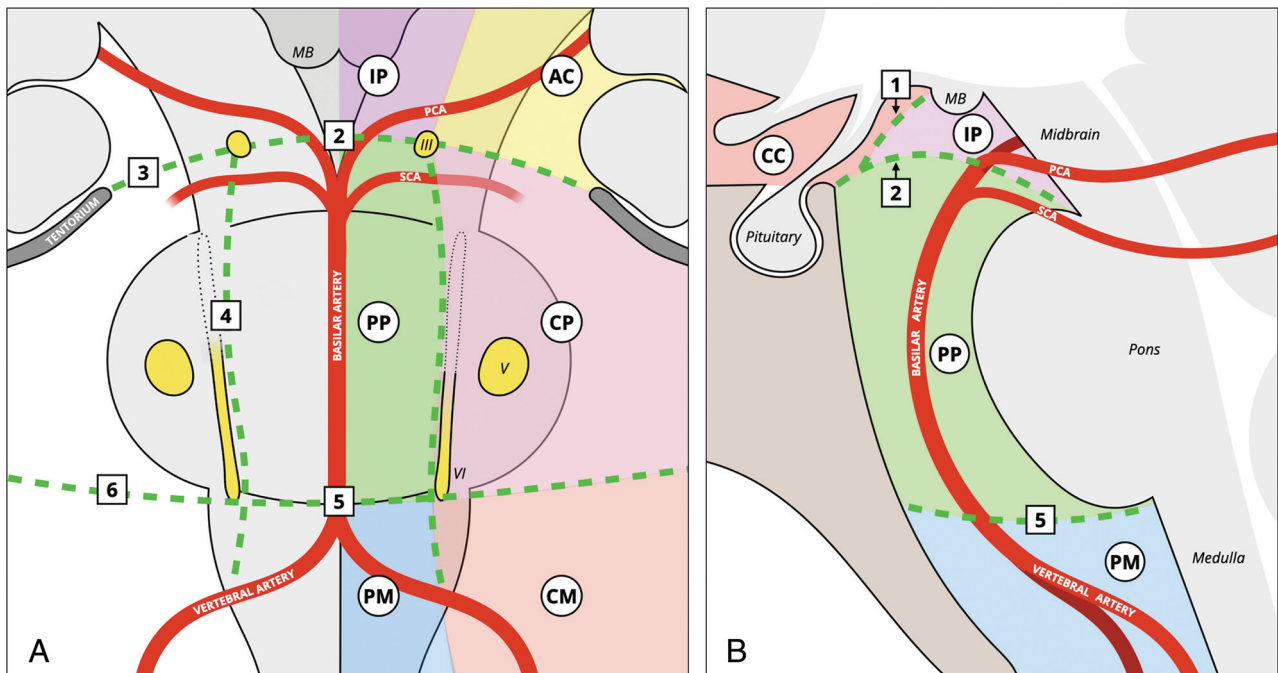


FIG 6. Illustration of arachnoid membranes in relation to the neurovascular structures in the interpeduncular and prepontine cisterns in the coronal (A) and sagittal (B) planes. The LM runs posterior-superiorly from the dorsum sellae and posterior clinoid process. Its diencephalic leaf continues to run posterior-superiorly and attaches to or just anterior to the mammillary bodies, separating the interpeduncular cistern from the chiasmatic cistern. The mesencephalic leaf of the LM extends posteriorly and is divided by the oculomotor nerves into medial and lateral parts. The medial part, attached to the distal basilar artery or the pontomesencephalic junction, separates the interpeduncular cistern from the prepontine cistern. The lateral parts, attached to the tentorium and the mesial temporal lobes, separate the ambient cisterns from the cerebellopontine cisterns. The anterior pontine membranes run on either side of the basilar artery and are medial to the abducens nerves, separating the prepontine cistern from the cerebellopontine cisterns. The medial pontomedullary membrane, located in the midline portion of the pontomedullary sulcus, separates the prepontine cistern from the premedullary cistern. The lateral pontomedullary membranes, located in the lateral portion of the pontomedullary sulcus, separate the cerebellomedullary cisterns from the cerebellopontine cisterns. The numbers represent the following: 1) diencephalic leaf of the LM; 2) medial attachment of the mesencephalic leaf of the LM; 3) lateral attachment of the mesencephalic leaf; 4) anterior pontine membrane; 5) medial pontomedullary membrane; 6) lateral pontomedullary membrane. III indicates the oculomotor nerve; V, trigeminal nerve; VI, abducens nerve; AC, ambient cisterns; CC, chiasmatic cistern; CM, cerebellomedullary cistern; CP, cerebellopontine cistern; IP, interpeduncular cistern; MB, mammillary bodies; PCA, posterior cerebral artery; PM, premedullary cistern; PP, prepontine cistern; SCA, superior cerebellar artery. Reproduced with permission from Frank Gaillard and Radiopaedia.org. Copyright (2021) Radiopaedia.

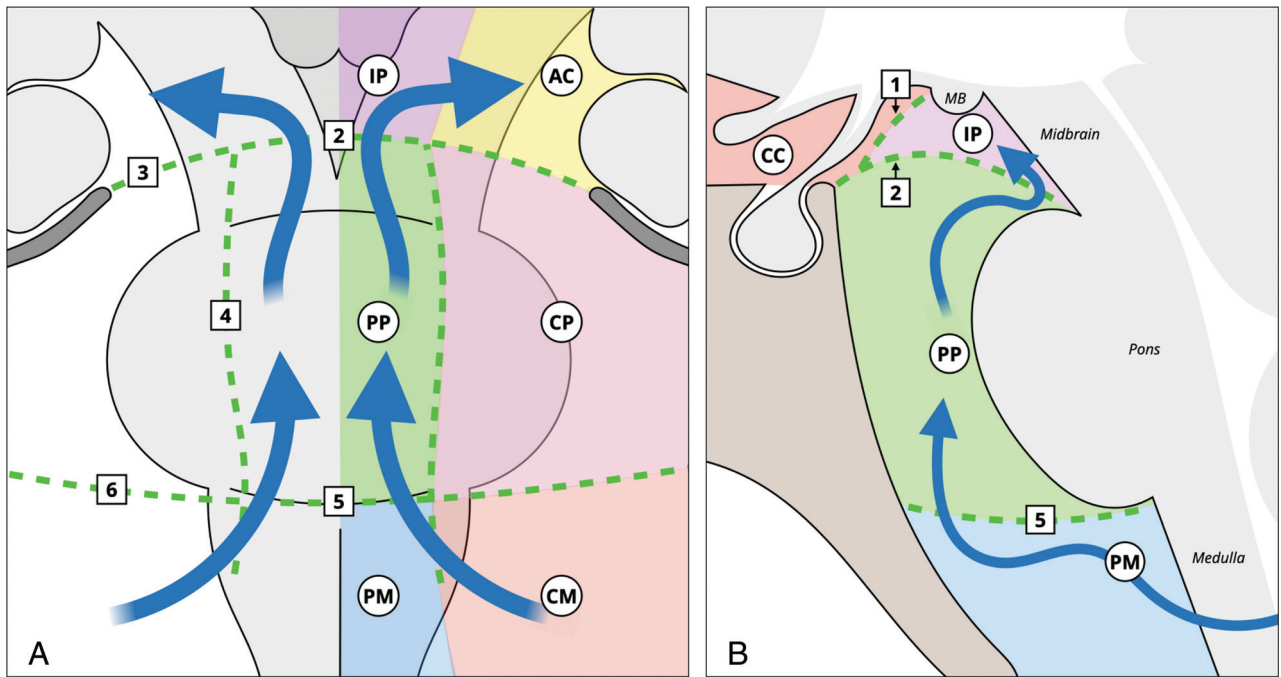


FIG 7. Illustration of arachnoid membranes and the CSF flow at the level of the interpeduncular and prepontine cisterns in the coronal (A) and sagittal (B) planes. The CSF enters the prepontine cistern from the cerebellomedullary and the premedullary cisterns. It runs superiorly within the prepontine cistern and enters the interpeduncular cistern. From there, the CSF can flow laterally and anteriorly into the chiasmatic cistern or posteriorly into the ambient cisterns. The numbers represent the following: 1) diencephalic leaf of the LM; 2) medial attachment of the mesencephalic leaf of the LM; 3) lateral attachment of the mesencephalic leaf; 4) anterior pontine membrane; 5) medial pontomedullary membrane; 6) lateral pontomedullary membrane. AC indicates ambient cisterns; CC, chiasmatic cistern; CM, cerebellomedullary cistern; CP, cerebellopontine cistern; IP, interpeduncular cistern; MB, mammillary bodies; PM, premedullary cistern; PP, prepontine cistern. Reproduced with permission from Frank Gaillard and Radiopaedia.org. Copyright (2021) Radiopaedia.

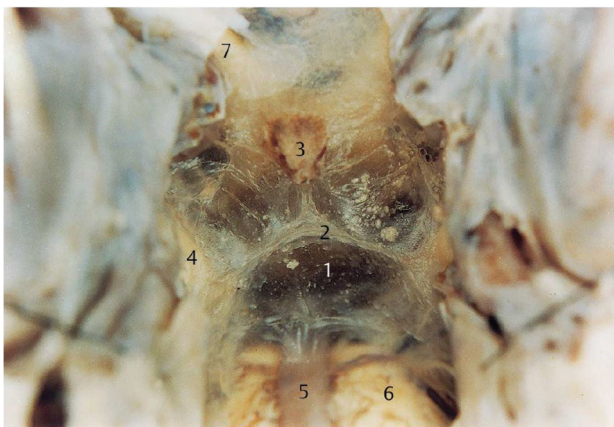


FIG 8. Microsurgical photograph of the LM taken in an adult human cadaveric brain in an oblique coronal view (about 45° to the anterior/posterior commissure line) with the clivus removed, looking up at the attachment between the diencephalic leaf and the mesencephalic leaf of the LM. The numbers represent the following: 1) the mesencephalic leaf of LM; 2) the attachment between the diencephalic leaf and the mesencephalic leaf; 3) the pituitary stalk; 4) the oculomotor nerve; 5) the basilar artery; 6) the pons; and 7) the optic nerve. Reproduced with permission from Lü and Zhu.²³ Copyright (2003) Thieme.

leaf, extends posteriorly and is divided by the oculomotor nerves that course along its upper border into a medial and lateral part. The medial part attaches along the distal basilar artery or the



FIG 9. 3D T2 sampling perfection with application-optimized contrasts by using different flip angle evolution (SPACE sequence; Siemens) left paramedian sagittal image shows the LM with its diencephalic leaf (straight arrow) and the incomplete mesencephalic leaf (curved arrow).

pontomesencephalic junction,^{23,30,31} separating the interpeduncular cistern from the prepontine cistern below. It is seen less frequently on imaging than the diencephalic leaf, in keeping with



FIG 10. 3D T2 SPACE sequence axial image (0.5-mm thickness) at the level of the superior pons reveals the anterior pontine membranes bilaterally (arrows). The right anterior pontine membrane appears incomplete posteriorly.

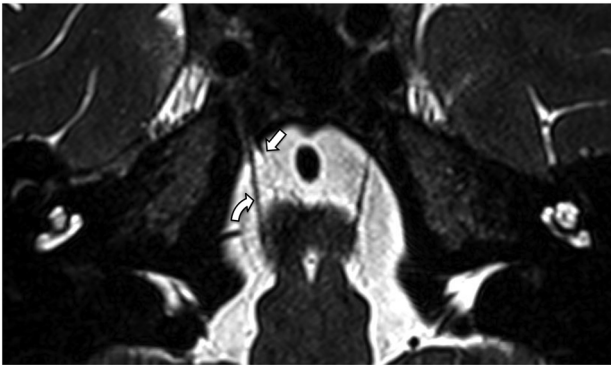


FIG 11. 3D T2 SPACE sequence with an oblique axial reformat (parallel to the abducens nerves) at the level of the lower pons shows an incomplete right anterior pontine membrane (straight arrow) medial to the right abducens nerve (curved arrow). The left anterior pontine membrane could not be seen at this level.

the microsurgical finding that the mesencephalic leaf is typically thinner, incomplete, or porous.¹⁹ The lateral part fans out to the tentorium and the mesial temporal lobes, usually located between the posterior cerebral arteries and the superior cerebellar arteries, thus separating the ambient cistern from the cerebellopontine cistern.²⁶

The prepontine cistern is separated from the interpeduncular cistern superiorly by the mesencephalic leaf of the LM and is separated from the premedullary cistern inferiorly by the medial pontomedullary membrane, located at the level of the pontomedullary sulcus. Laterally, the prepontine cistern is separated from the cerebellopontine cisterns by the paired paramedian anterior pontine membranes, which run on both sides of the basilar artery

between the pons and the clivus (Fig 10). These membranes ascend in line with the oculomotor nerves superiorly and extend inferiorly along the medial side of the abducens nerves. They become progressively thinner as they extend caudally and may disappear in the lower pons (Fig 11).¹⁹

Clinical Significance

Role in CSF Flow. The subarachnoid space, traversed by the trabeculated arachnoid membranes, is filled with CSF, an ultrafiltrate of plasma, which performs multiple vital functions including nutrient provision, waste removal, buoyancy (reducing the effective weight of the brain from ~1500 g to ~50 g),³⁴ and shock absorption. CSF is primarily produced by the choroid plexus within the ventricles at a rate of ~20 mL/h, with a fairly constant total volume of ~130 mL (in adults) spread between the ventricles (~30 mL) and subarachnoid space surrounding the brain (~25 mL) and cord (~75 mL).^{34,35}

The typical basic explanation of CSF flow is that after production in the choroid plexus, CSF flows through the ventricles (cranio-caudal), exiting through the foramina of Luschka and Magendie into the subarachnoid space. Once within the subarachnoid space, it flows through the basal cisterns, over the convexity of the brain, and along the spinal cord where it is absorbed into the blood of the cerebral venous sinuses through arachnoid villi.³⁶ CSF flow is presumed to be driven by a combination of a hydrostatic pressure gradient from the choroid plexus to the arachnoid villi and pulsations of the choroid plexus, with effects of both respiration and cardiac pulsations contributing to pulsatile bidirectional flow.³⁷ Other lesser factors affecting CSF flow are posture, jugular venous pressure, physical exertion, and time of day.³⁶

With much ongoing research in this field, the traditional view of circulatory bulk flow of CSF has increasingly been challenged. Several studies have, instead, identified and described a complex, multidirectional system with continuous fluid exchange at the blood-brain barrier and cell membranes at the CSF/interstitial fluid interface.^{35,38-40} Drainage and absorption of CSF are also more complex than just to the venous sinuses via the arachnoid villi, with drainage to cervical and spinal lymph nodes via the cribriform plate and spinal canal nerve roots also demonstrated.³⁵

Recent studies have also pointed to the presence of a functional cerebral lymphatic or glymphatic system. In this system, CSF enters the Virchow-Robin perivascular spaces around arteries and arterioles in the subarachnoid space; the vessels are lined by the glia limitans, a thin layer of astrocyte foot processes rich in the aquaporin-4 water channels. Movement of CSF across the aquaporin-4 channels into the interstitial space of the brain is the result of convective flow (the transport of a substance by bulk flow, in which bulk flow is often the movement of fluid down a pressure gradient).⁴¹ In the interstitial space, various waste products including amyloid are dissolved in the CSF before the CSF again moves out through aquaporin-4 channels in the Virchow-Robin spaces lining the venules and veins.^{35,40,42}

Nonetheless, a substantial volume of CSF flows from the ventricles, through the basal cisterns, and over the convexity of the brain, and this flow is affected by the anatomy of the arachnoid membranes.⁴³ The semiconstant arachnoid membranes that form the boundaries of the interpeduncular and prepontine



FIG 12. Postendoscopic third ventriculostomy 3D T2 SPACE midsagittal (A) and left paramedian sagittal (B) images in a patient with obstructive hydrocephalus at the level of the third ventricle outlet due to a left thalamic glioma with extension into the pineal gland (*asterisk*). A, The stoma and the CSF flow void from the third ventricle to the interpeduncular cistern are shown (*arrow*). B, The CSF flow void extends into the chiasmatic cistern (*curved arrow*), which suggests that the diencephalic leaf has been fenestrated or is incomplete.

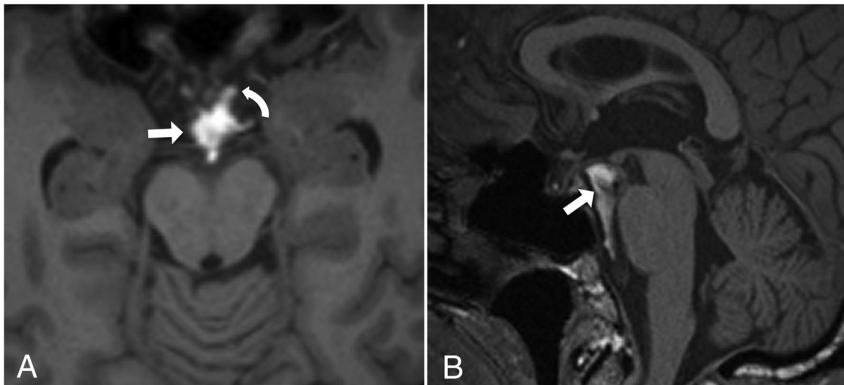


FIG 13. Axial (A) and midline sagittal (B) T1 MPRAGE images in a patient with nonaneurysmal perimesencephalic subarachnoid hemorrhage show that the hyperintense blood is mostly confined to the interpeduncular and prepontine cisterns (*straight arrows*), with only a tiny amount of blood entering the chiasmatic cistern (*curved arrow*).

cisterns may potentially form a major conduit in which the CSF flows in a caudocranial direction in a somewhat predictable fashion. After the CSF exits the fourth ventricle through the foramina of Luschka and enters the cerebellopontine angle, it enters the prepontine cistern via apertures in the anterior pontine membranes. It continues cranially and enters the interpeduncular cistern via the openings in the medial part of the mesencephalic leaf of LM and the medial pontomesencephalic membrane. From the interpeduncular cistern, the CSF may flow either ventrally through the pores in the diencephalic leaf into the chiasmatic cistern or dorsally around the cerebral peduncles into the ambient cisterns (Fig 7). The ventral flow of CSF from the interpeduncular cistern is somewhat limited by the diencephalic leaf, as demonstrated by the arrested air column on the pneumoencephalogram in Fig 1 and the abrupt loss of CSF flow void anterior to the diencephalic leaf in Fig 4B. From here, CSF flows more slowly in the subarachnoid space superiorly over the

cerebral convexities and inferiorly around the spinal cord. Absorption, as mentioned above, is via the arachnoid villi/granulations in the venous sinuses, the cribriform plate in the anterior cranial fossa, and at the spinal nerve roots.

Endoscopic Third Ventriculostomy. Endoscopic third ventriculostomy (ETV) is a surgical procedure used to treat noncommunicating hydrocephalus by creating a bypass for the CSF from the third ventricle to the basal cisterns. It involves introducing an endoscope through the brain parenchyma, usually the right frontal lobe, into the lateral ventricle. From there the endoscope is navigated through the foramen of Monro into the third ventricle. A stoma is created at the floor of the third ventricle allowing CSF to flow out of the third ventricle directly into the interpeduncular cistern.⁴⁴

The importance of perforating the diencephalic leaf of the LM during ETV is well-known in the neurosurgery community. Buxton et al⁴⁵ reported that the diencephalic leaf of the LM may block the flow of CSF from the third ventricle into the interpeduncular and prepontine cisterns and therefore needs to be fenestrated during the operation for a successful ETV. The CSF flow voids from the third ventricle to the interpeduncular cistern can be readily visualized on high-resolution T2-weighted sequences (Fig 12).

Subarachnoid Hemorrhage

The arachnoid membranes separating the cisterns may impede the spread of blood to the adjacent cisterns, much as CSF flow may be obstructed (see section on “Role in CSF Flow” and Fig 7). In cases of aneurysmal subarachnoid hemorrhage, the site of the ruptured aneurysm can often be predicted by assessing the distribution of the blood on the initial unenhanced CT scan. Furthermore, nonaneurysmal perimesencephalic subarachnoid hemorrhage is often localized to the interpeduncular, ambient, and prepontine cisterns without spreading to the chiasmatic cistern (Fig 13). This localization is likely due to the presence of the diencephalic leaf of LM.⁴⁶ However, due to the anatomic variations of the arachnoid membranes and the amount of extravasated blood, the extent of the perimesencephalic subarachnoid hemorrhage can be variable.

Hydrocephalus

Arachnoid membranes may be thickened secondary to inflammation or hemorrhage, and as a result, the apertures in these

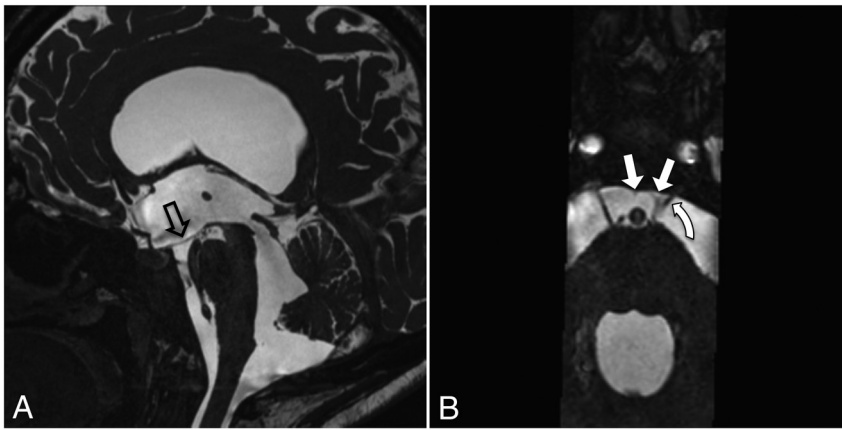


FIG 14. Midline sagittal (A) and reformatted axial (B) CISS sequence images in a patient with chronic extraventricular intracisternal obstructive hydrocephalus. A, Marked hydrocephalus with inferior bowing of the floor of the third ventricle (*hollow arrow*) and a widely patent cerebral aqueduct. B, The anterior pontine membranes are displaced medially (*straight arrows*) with the left anterior pontine membrane visibly thickened. The left abducens nerve is displaced medially (*curved arrow*). The displacement of the anterior pontine membranes may be due to altered CSF flow dynamics and/or tethering from other arachnoid membranes. The displacement and thickening of the membrane are likely the consequence of previous infection, inflammation, or hemorrhage, but they subsequently cause obstruction to CSF flow.

membranes may be occluded. This occlusion impedes the CSF flow within the prepontine and interpeduncular cisterns and can lead to hydrocephalus. In addition, the arachnoid membranes may be displaced due to altered CSF flow dynamics and/or tethering from other arachnoid membranes, further impeding CSF flow. The resultant tetraventricular hydrocephalus is often interpreted as communicating hydrocephalus, but a more accurate term would be extraventricular intracisternal obstructive hydrocephalus.⁴⁷ These obstructive cisternal membranes cannot be visualized on conventional MR images but can be seen on higher-resolution sequences such as the 3D-CISS sequence (Fig 14).^{32,33}

On 3D-CISS imaging, Laitt et al³² identified “complex membranes” in the basal cisterns in 18 of 43 patients with hydrocephalus, confirmed surgically in those who underwent ETV. In patients whose ETV failed, absence of flow voids in the basal cisterns (particularly in the prepontine cistern) was usually seen and was attributed to the arrest of CSF flow by these membranes.

In their study of 134 patients with hydrocephalus, Dinçer et al³³ found cisternal membranes causing obstruction in 28 cases. Most of these membranes are located in the prepontine cistern, interpeduncular cistern, or both. Seventeen of 28 cases were proved surgically during ETV, and some of these membranes were fenestrated during the operation.

In patients with tetraventricular hydrocephalus, identifying obstructive arachnoid membranes is crucial because these patients, who would have otherwise been treated with shunt insertion, can be selected for ETV. Furthermore, neurosurgeons can fenestrate these thickened membranes during ETV and, by doing so, potentially increase the success rate of the operation.

CONCLUSIONS

The arachnoid membranes play a role in both normal CSF flow dynamics and conditions characterized by abnormal CSF flow. The abnormally thickened membranes and sometimes the normal membranes can be visualized on high-resolution T2-weighted sequences. Therefore, understanding the presence and anatomy of the arachnoid membranes is becoming increasingly important for neuroradiologists.

REFERENCES

1. Killer HE, Laeng HR, Flammer J, et al. **Architecture of arachnoid trabeculae, pillars, and septa in the subarachnoid space of the human optic nerve: anatomy and clinical considerations.** *Br J Ophthalmol* 2003;87:777–81 [CrossRef Medline](#)
2. Yasargil MG, Kasdaglis K, Jain KK, et al. **Anatomical observations of the subarachnoid cisterns of the brain during surgery.** *J Neurosurg* 1976;44:298–302 [CrossRef Medline](#)
3. Adeeb N, Deep A, Griessenauer CJ, et al. **The intracranial arachnoid mater: A comprehensive review of its history, anatomy, imaging, and pathology.** *Childs Nerv Syst* 2013;29:17–33 [CrossRef Medline](#)
4. Sanan A, van Loveren HR. **The arachnoid and the myth of arachne.** *Neurosurgery* 1999;45:152 [CrossRef Medline](#)
5. Lü J. **Arachnoid membrane: the first and probably the last piece of the roadmap.** *Surg Radiology Anat* 2015;37:127–38 [CrossRef Medline](#)
6. Connor DE, Nanda A. **Bengt Lilliequist: life and accomplishments of a true renaissance man.** *J Neurosurg* 2017;126:645–49 [CrossRef Medline](#)
7. Lanska DJ, Moniz, Egaz. In: Aminoff MJ, Daroff RB, ed. *Encyclopedia of the Neurological Sciences.* Elsevier; 2014:92–93 [CrossRef](#)
8. Lilliequist B. **The anatomy of the subarachnoid cisterns.** *Acta Radiol* 1956;46:61–71 [CrossRef Medline](#)
9. Epstein BS. **The role of a transverse arachnoid membrane within the interpeduncular cistern in the passage of Pantopaque into the cranial cavity.** *Radiology* 1965;85:914–20 [CrossRef Medline](#)
10. Mortazavi MM, Quadri SA, Khan MA, et al. **Subarachnoid trabeculae: a comprehensive review of their embryology, histology, morphology, and surgical significance.** *World Neurosurg* 2018;111:279–90 [CrossRef Medline](#)
11. O’Rahilly R, Müller F. **The meninges in human development.** *J Neuropathol Exp Neurol* 1986;45:588–608 [CrossRef Medline](#)
12. Decimo I, Fumagalli G, Berton V, et al. **Meninges: from protective membrane to stem cell niche.** *Am J Stem Cells* 2012;1:92 [Medline](#)
13. Osborn AG, Preece MT. **Intracranial cysts: radiologic-pathologic correlation and imaging approach.** *Radiology* 2006;239:650–64 [CrossRef Medline](#)
14. Logan C, Asadi H, Kok H, et al. **Arachnoid cysts: common and uncommon clinical presentations and radiological features.** *J Neuroimaging Psychiatry Neurol* 2016;1:79–84 [CrossRef](#)
15. Talbert D. **The embryological development of the form of the trabeculae bridging the subarachnoid space.** *Journal of Trauma & Treatment* 2014;3:198 [CrossRef](#)
16. Alcolado R, Weller RO, Parrish EP, et al. **The cranial arachnoid and pia mater in man: anatomical and ultrastructural observations.** *Neuropathol Appl Neurobiol* 1988;14:1–17 [CrossRef Medline](#)

17. Vinas FC, Fandino R, Dujovny M, et al. **Microsurgical anatomy of the supratentorial arachnoidal trabecular membranes and cisterns.** *Neurol Res* 1994;16:417–24 [CrossRef Medline](#)
18. Hoeffner EG, Mukherji SK, Srinivasan A, et al. **Neuroradiology back to the future: brain imaging.** *AJNR Am J Neuroradiol* 2012;33:5–11 [CrossRef Medline](#)
19. Matsuno H, Rhoton AL, Peace D. **Microsurgical anatomy of the posterior fossa cisterns.** *Neurosurgery* 1988;23:58–80 [CrossRef Medline](#)
20. Vinas FC, Dujovny M, Fandino R, et al. **Microsurgical anatomy of the arachnoidal trabecular membranes and cisterns at the level of the tentorium.** *Neurol Res* 1996;18:305–12 [CrossRef Medline](#)
21. Vinas FC, Dujovny M, Fandino R, et al. **Microsurgical anatomy of the infratentorial trabecular membranes and subarachnoid cisterns.** *Neurol Res* 1996;18:117–25 [CrossRef Medline](#)
22. Lü J, Zhu X. **Microsurgical anatomy of the interpeduncular cistern and related arachnoid membranes.** *J Neurosurg* 2005;103:337–41 [CrossRef Medline](#)
23. Lü J, Zhu XI. **Microsurgical anatomy of Lilliequist's membrane.** *Minim Invasive Neurosurg* 2003;46:149–54 [CrossRef Medline](#)
24. Lü J, Zhu XL. **Characteristics of distribution and configuration of intracranial arachnoid membranes.** *Surg Radiol Anat* 2005;27:472–81 [CrossRef Medline](#)
25. Lü J, Zhu XL. **Cranial arachnoid membranes: some aspects of microsurgical anatomy.** *Clin Anat* 2007;20:502–11 [CrossRef Medline](#)
26. Qi ST, Fan J, Zhang XA, et al. **Reinvestigation of the ambient cistern and its related arachnoid membranes: an anatomical study—laboratory investigation.** *J Neurosurg* 2011;115:171–78 [CrossRef Medline](#)
27. Zhang XA, Qi ST, Huang GL, et al. **Anatomical and histological study of Lilliequist's membrane: with emphasis on its nature and lateral attachments.** *Childs Nerv Syst* 2012;28:65–72 [CrossRef Medline](#)
28. Song-Tao Q, Xi-An Z, Hao L, et al. **The arachnoid sleeve enveloping the pituitary stalk: anatomical and histologic study.** *Neurosurgery* 2010;66:585–89 [CrossRef Medline](#)
29. Inoue K, Seker A, Osawa S, et al. **Microsurgical and endoscopic anatomy of the supratentorial arachnoidal membranes and cisterns.** *Neurosurgery* 2009;65:644–64; discussion 665 [CrossRef Medline](#)
30. Kurucz P, Baksa G, Patonay L, et al. **Endoscopic anatomical study of the arachnoid architecture on the base of the skull, Part II: level of the tentorium, posterior fossa and the craniovertebral junction.** *Innovative Neurosurg* 2013;1:91–108 [CrossRef](#)
31. Volovici V, Varvari I, Dirven CM, et al. **The membrane of Lilliequist: a safe haven in the middle of the brain—a narrative review.** *Acta Neurochir (Wien)* 2020;162:2235–44 [CrossRef Medline](#)
32. Laitt RD, Mallucci CL, Jansen T, et al. **Constructive interference in steady-state 3D Fourier-transform MRI in the management of hydrocephalus and third ventriculostomy.** *Neuroradiology* 1999;41:117–23 [CrossRef Medline](#)
33. Dinçer A, Kohan S, Özek MM. **Is all “communicating” hydrocephalus really communicating? Prospective study on the value of 3D-constructive interference in steady state sequence at 3T.** *AJNR Am J Neuroradiol* 2009;30:1898–1906 [CrossRef Medline](#)
34. McMinn RMH, ed. *Last's Anatomy: Regional and Applied.* 9th ed. Elsevier; 1998
35. Bothwell SW, Janigro D, Patabendige A. **Cerebrospinal fluid dynamics and intracranial pressure elevation in neurological diseases.** *Fluids Barriers CNS* 2019;16:9 [CrossRef Medline](#)
36. Sakka L, Coll G, Chazal J. **Anatomy and physiology of cerebrospinal fluid.** *Eur Ann Otorhinolaryngol Head Neck Dis* 2011;128:309–16 [CrossRef Medline](#)
37. Dreha-Kulaczewski S, Konopka M, Joseph AA, et al. **Respiration and the watershed of spinal CSF flow in humans.** *Sci Rep* 2018;8:5594 [CrossRef Medline](#)
38. Chikly B, Quaghebeur J. **Reassessing cerebrospinal fluid (CSF) hydrodynamics: a literature review presenting a novel hypothesis for CSF physiology.** *J Bodyw Mov Ther* 2013;17:344–54 [CrossRef Medline](#)
39. Brinker T, Stopa E, Morrison J, et al. **A new look at cerebrospinal fluid circulation.** *Fluids Barriers CNS* 2014;11:10 [CrossRef Medline](#)
40. Iliff JJ, Nedergaard M. **Is there a cerebral lymphatic system?** *Stroke* 2013;44:S93–95 [CrossRef Medline](#)
41. Ray L, Iliff JJ, Heys JJ. **Analysis of convective and diffusive transport in the brain interstitium.** *Fluids Barriers CNS* 2019;16:6 [CrossRef Medline](#)
42. Bradley WG. **CSF flow in the brain in the context of normal pressure hydrocephalus.** *AJNR Am J Neuroradiol* 2015;36:83138 [CrossRef Medline](#)
43. Brodbelt A, Stoodley M. **CSF pathways: a review.** *Br J Neurosurg* 2007;21:510–20 [CrossRef Medline](#)
44. Hellwig D, Grotenhuis JA, Tirakotai W, et al. **Endoscopic third ventriculostomy for obstructive hydrocephalus.** *Neurosurg Rev* 2005;28:1 [CrossRef Medline](#)
45. Buxton N, Vloeberghs M, Punt J. **Lilliequist's membrane in minimally invasive endoscopic neurosurgery.** *Clin Anat* 1998;11:187–90
46. Schwartz TH, Solomon RA. **Perimesencephalic nonaneurysmal subarachnoid hemorrhage: review of the literature.** *Neurosurgery* 1996;39:433–40 [CrossRef Medline](#)
47. Kehler U, Gliemroth J. **Extraventricular intracisternal obstructive hydrocephalus: a hypothesis to explain successful 3rd ventriculostomy in communicating hydrocephalus.** *Pediatr Neurosurg* 2003;38:98–101 [CrossRef Medline](#)
48. Saboori P. **Subarachnoid space trabeculae architecture.** *Clin Anat* 2021;34:40–50 [CrossRef Medline](#)
49. Cleary JO, Yoo PE, Moffat BA, et al. **See it, slice it, learn it: combined ultra-high-field MRI and high-resolution CT for an open source virtual anatomy resource.** In: *Proceedings of the Annual Meeting and Exhibition of the International Society for Magnetic Resonance in Medicine*, April 22–27, 2017; Honolulu, Hawaii