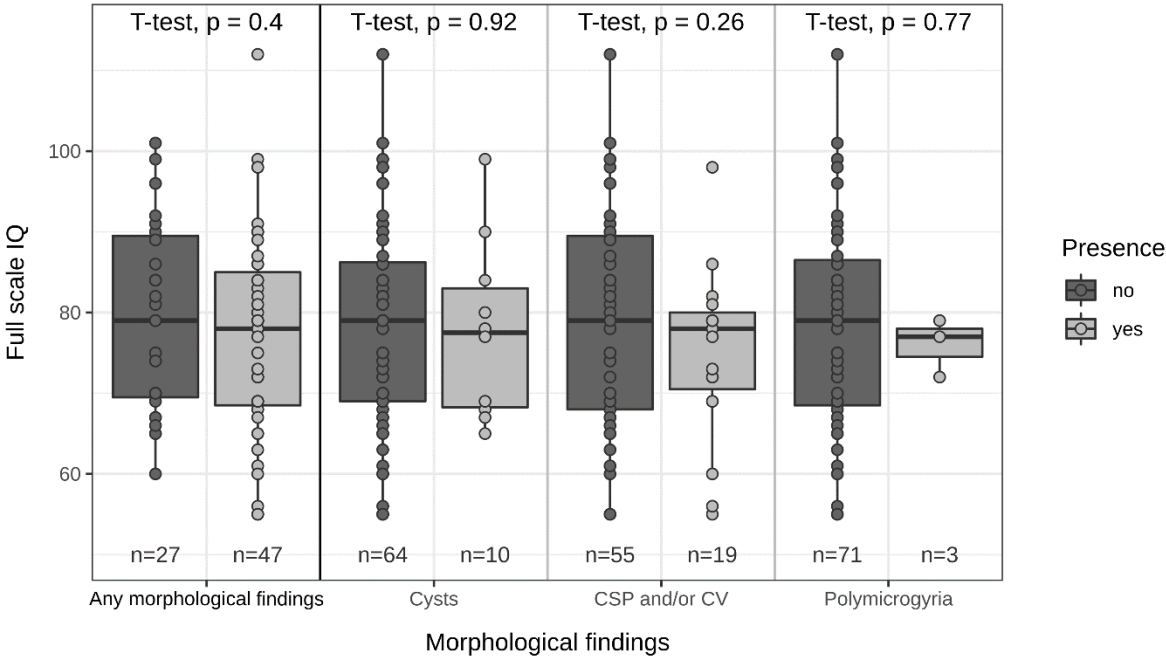
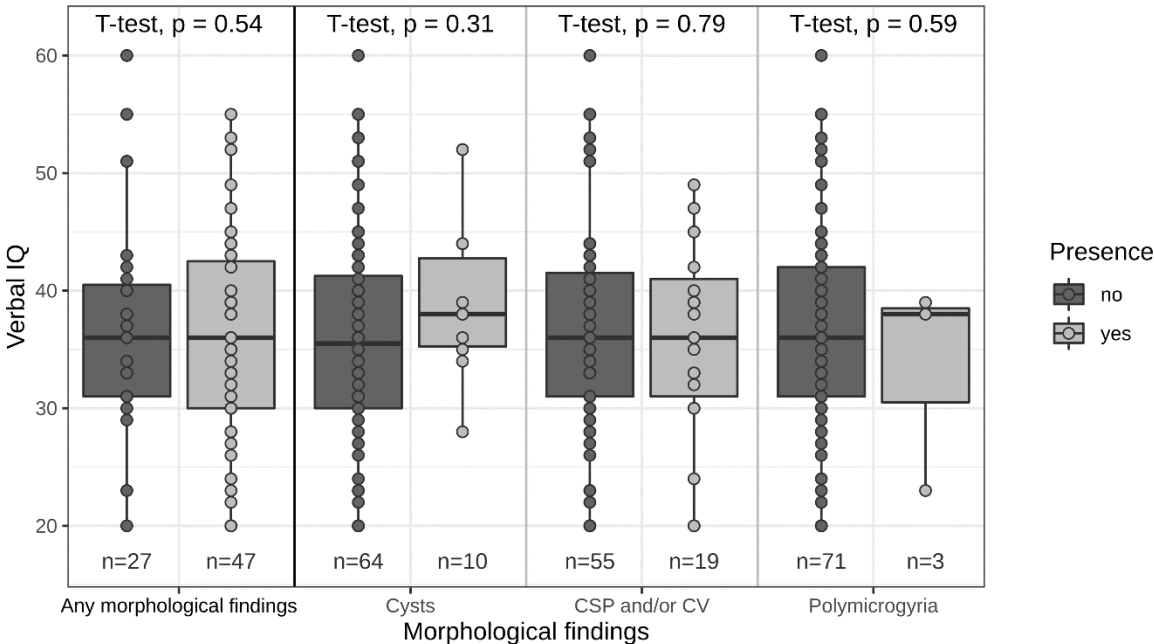


Online Supplemental Data

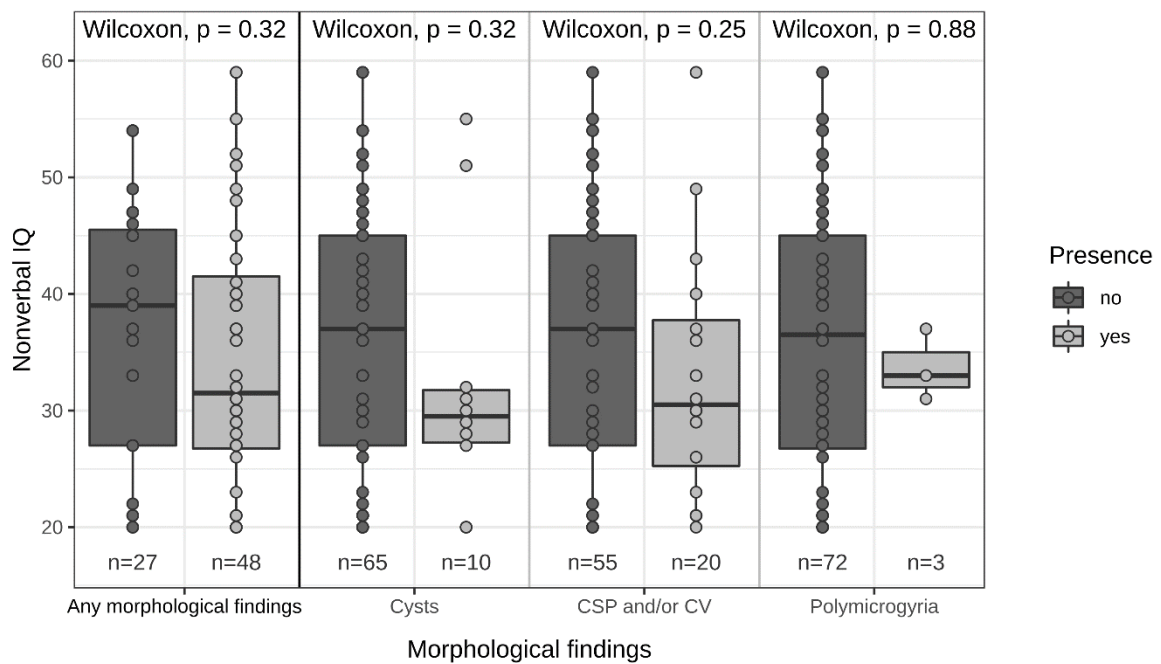
Online Figures



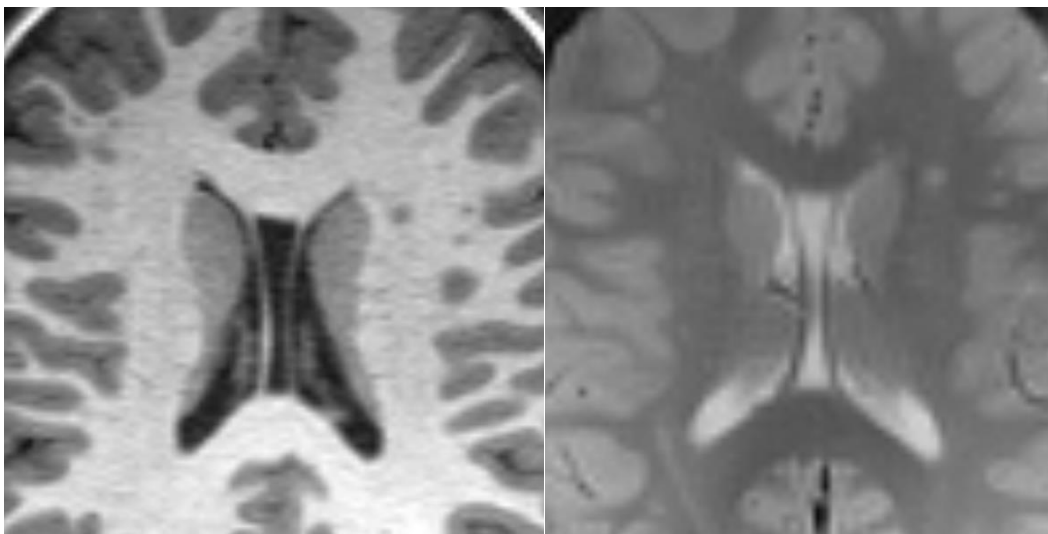
Online Figure 1 Association between occurrence of all findings summed together/single findings and Full scale IQ



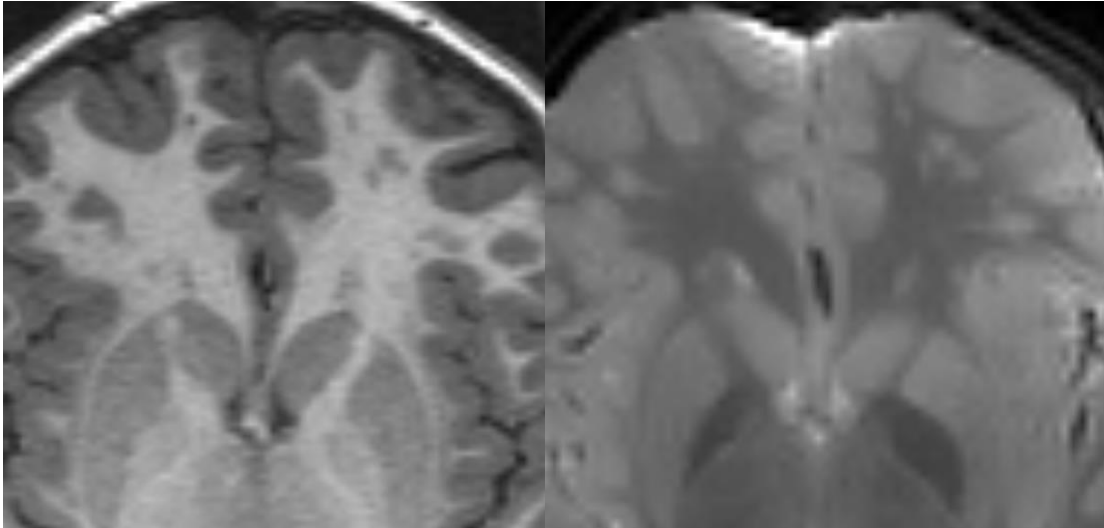
Online Figure 2 Association between occurrence of all findings summed together/single findings and Verbal IQ T-score



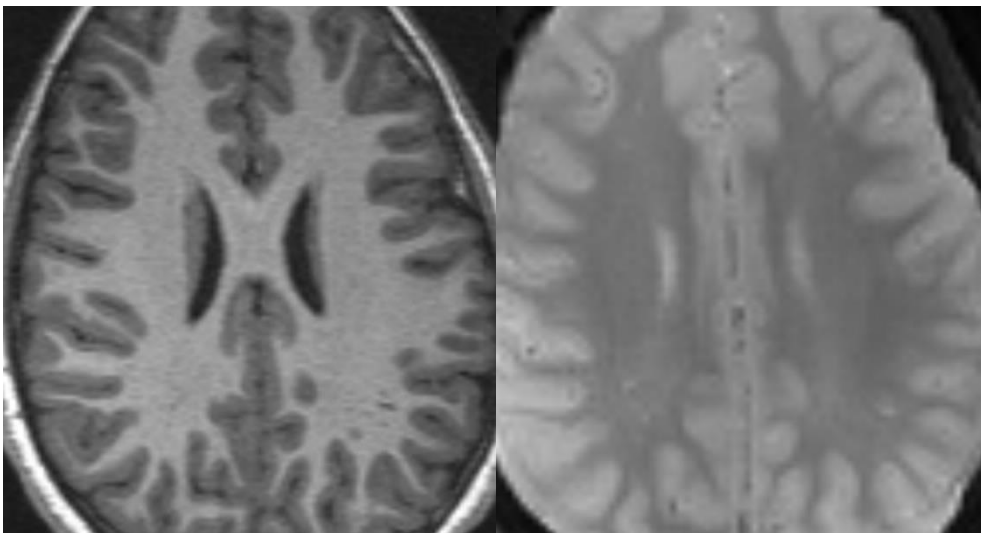
Online Figure 3 Association between occurrence of all findings summed together/single findings and Nonverbal IQ T-score



Online Figure 4 Left, a 3D T1WI of bihemispheric, frontally emphasized heterotopia in the white matter that are isointense to the cortex. On the right, the T2*WI in which most of the heterotopia are also visible and isointense to the cortex. In addition, a cavum septi pellucidum et vergae is seen.



Online Figure 5 Left, a 3D T1WI of bihemispheric, frontally emphasized heterotopia in the white matter that are isointense to the cortex. On the right, the T2*WI in which most of the heterotopia are also visible and isointense to the cortex.



Online Figure 6 Left, a 3D T1WI of a healthy volunteer with heterotopia-like lesions in the white matter. The distribution pattern is different from that in subjects with 22q11.2DS, as described already in the results section. However, adding the T2*WI (right) additionally shows that the lesions are isointense to the CSF rather than to the cortex, suggesting that these are not heterotopia but rather enlarged perivascular spaces.

Online Tables

Online Table 1. Degree of association between variables

	Cysts		CSP ³ and/or CV ⁴	
	OR	p-value ¹ , FDR ² adjusted	OR	p-value ¹ , FDR ² adjusted
Heterotopia	5.86	0.11	0.75	0.61
Cysts			0.27	0.41

¹Statistical tests performed: Fisher's exact test, ²False Discovery Rate, ³Cavum septi pellucidi, ⁴Cavum Vergae

Online Table 2. P-values of multivariate logistic regression by morphological findings and psychiatric diagnoses in individuals with 22q11.2DS

p-value	Heterotopia	CSP ¹ and/or CV ²	Cysts
ADHD ³	0.81	0.35	0.90
ASD ⁴	0.18	0.94	0.24
Anxiety disorder	0.16	0.08	0.16

¹Cavum septi pellucidi, ²Cavum Vergae, ³Autism Spectrum Disorder, ⁴Attention-Deficit/Hyperactivity Disorder