

Online Supplemental Data

**Investigating Simultaneity for Deep Learning-enhanced Actual Ultra-low-dose Amyloid PET/MRI Imaging**

Kevin T. Chen<sup>1,2</sup>, Olalekan Adeyeri<sup>3</sup>, Tyler N. Toueg<sup>4</sup>, Michael Zeineh<sup>1</sup>, Elizabeth Mormino<sup>4</sup>, Mehdi Khalighi<sup>1</sup>, Greg Zaharchuk<sup>1</sup>

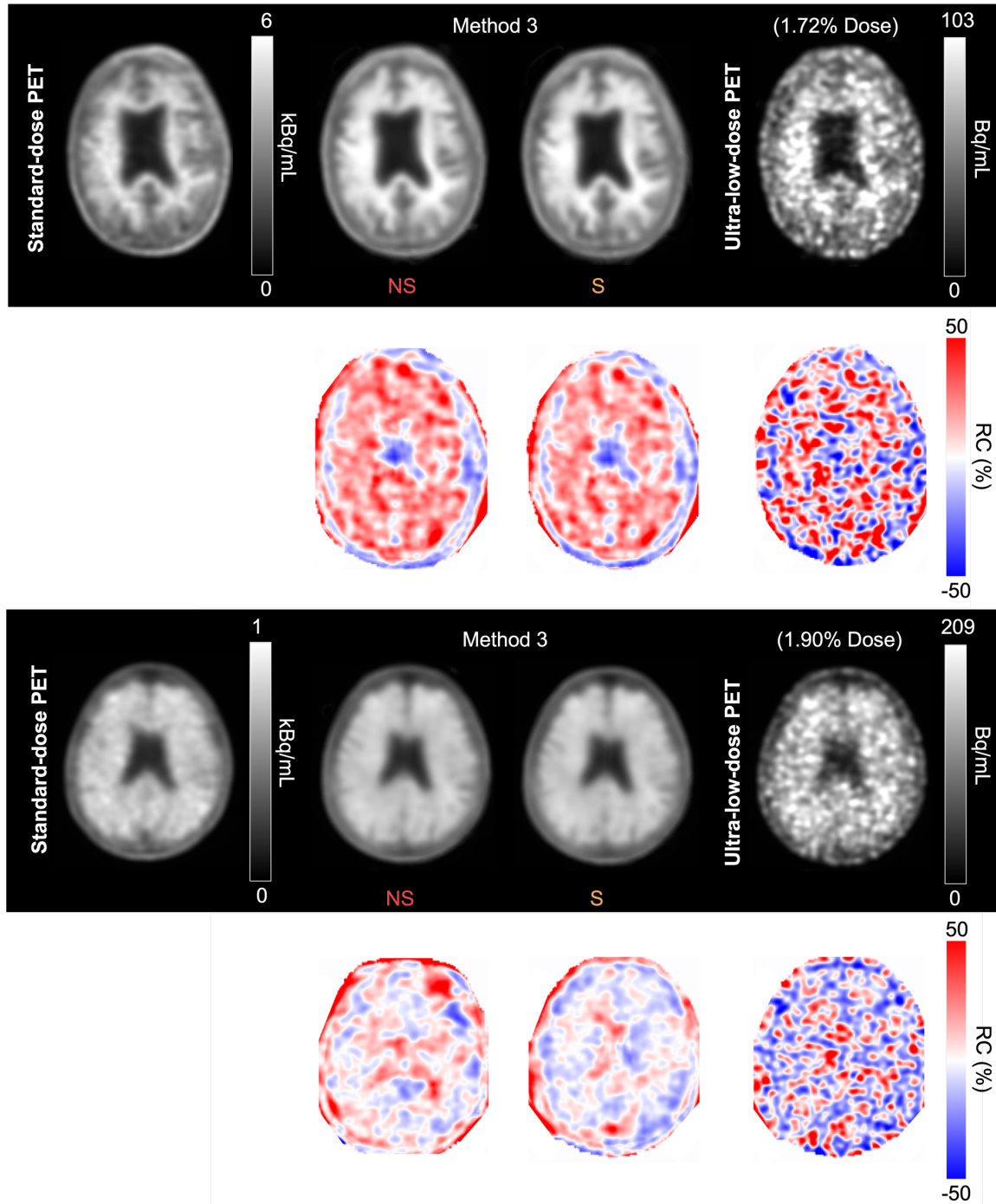
<sup>1</sup>Department of Radiology, Stanford University, Stanford, CA

<sup>2</sup>Department of Biomedical Engineering, National Taiwan University, Taipei, Taiwan

<sup>3</sup>Computer Science, Salem State University, Salem, MA, United States

<sup>4</sup>Department of Neurology and Neurological Sciences, Stanford University, Stanford, CA

Corresponding/first author: Kevin T. Chen; address: 49 Fanglan Road, Taipei 106, Taiwan; email: [chenkt@ntu.edu.tw](mailto:chenkt@ntu.edu.tw); tel: +886(960)603899 ORCID ID: 0000-0001-8556-5307



**Supplementary Figure.** Representative amyloid PET images (top: amyloid negative, bottom: amyloid positive) with their voxel-wise relative change (RC) maps, calculated using the standard-dose images as the reference. The enhanced images show a smaller RC range than the ultra-low-dose images.

**Supplementary Table.** Cerebral ROIs for derivation of the larger regions of interest. The larger regions were then used to calculate a composite “global” value of the association cortex.

Region	FreeSurfer region
Parietal	ctx-lh-precuneus ctx-rh-precuneus ctx-lh-inferiorparietal ctx-rh-inferiorparietal ctx-lh-superiorparietal ctx-rh-superiorparietal ctx-lh-supramarginal ctx-rh-supramarginal
Whole cerebellum	Right-Cerebellum-White-Matter Right-Cerebellum-Cortex Left-Cerebellum-White-Matter Left-Cerebellum-Cortex
Lateral temporal	ctx-lh-middletemporal ctx-rh-middletemporal ctx-lh-superiortemporal ctx-rh-superiortemporal
Frontal	ctx-lh-caudalmiddlefrontal ctx-rh-caudalmiddlefrontal ctx-lh-lateralorbitofrontal ctx-rh-lateralorbitofrontal ctx-lh-medialorbitofrontal ctx-rh-medialorbitofrontal ctx-lh-parsopercularis ctx-lh-parsorbitalis ctx-lh-parstriangularis ctx-rh-parsopercularis ctx-rh-parsorbitalis ctx-rh-parstriangularis ctx-lh-rostralmiddlefrontal ctx-rh-rostralmiddlefrontal ctx-lh-superiorfrontal ctx-rh-superiorfrontal ctx-lh-frontalpole ctx-rh-frontalpole
Cingulate	ctx-lh-isthmuscingulate ctx-lh-posteriorcingulate ctx-lh-rostralanteriorcingulate ctx-rh-isthmuscingulate ctx-rh-posteriorcingulate ctx-rh-rostralanteriorcingulate ctx-lh-caudalanteriorcingulate ctx-rh-caudalanteriorcingulate